

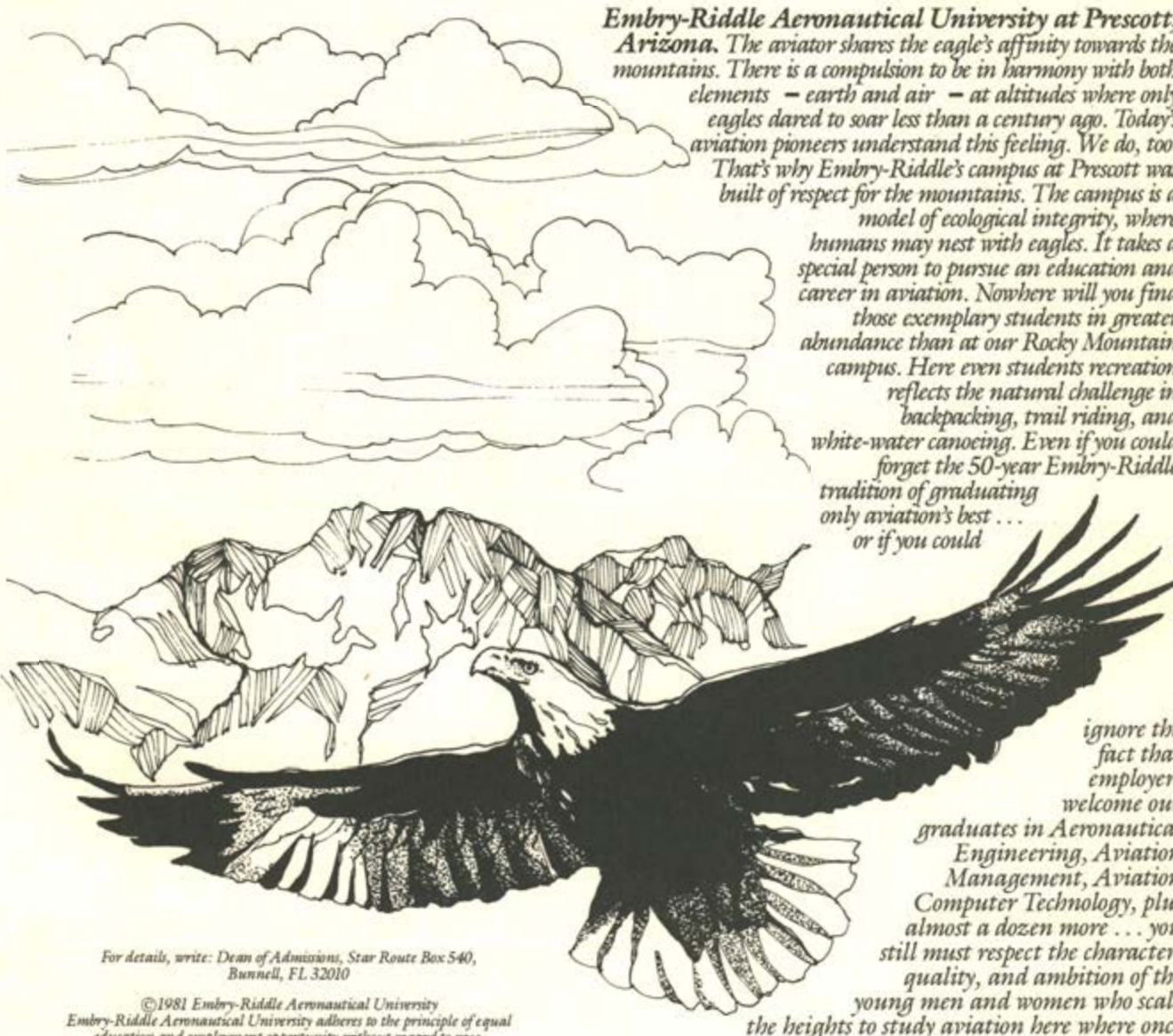


**JEKYLL ISLAND, GEORGIA
TO
SHANGRI-LA, AFTON, OKLAHOMA**

JUNE 26 — 29, 1981

Official Program — \$3.50

where once only the eagle dared to soar...

A line drawing of a landscape. In the background, there are jagged mountains. The sky is filled with several layers of clouds. In the foreground, an eagle is shown in flight, facing left, with its wings fully extended. The eagle's feathers are detailed with fine lines.

Embry-Riddle Aeronautical University at Prescott, Arizona. The aviator shares the eagle's affinity towards the mountains. There is a compulsion to be in harmony with both elements - earth and air - at altitudes where only eagles dared to soar less than a century ago. Today's aviation pioneers understand this feeling. We do, too. That's why Embry-Riddle's campus at Prescott was built of respect for the mountains. The campus is a model of ecological integrity, where humans may nest with eagles. It takes a special person to pursue an education and career in aviation. Nowhere will you find those exemplary students in greater abundance than at our Rocky Mountain campus. Here even students recreation reflects the natural challenge in backpacking, trail riding, and white-water canoing. Even if you could forget the 50-year Embry-Riddle tradition of graduating only aviation's best ... or if you could

ignore the fact that employers welcome our graduates in Aeronautical Engineering, Aviation Management, Aviation Computer Technology, plus almost a dozen more ... you still must respect the character, quality, and ambition of the young men and women who scale the heights to study aviation here where once only the eagle dared to soar.

For details, write: Dean of Admissions, Star Route Box 540, Bunnell, FL 32010

*©1981 Embry-Riddle Aeronautical University
Embry-Riddle Aeronautical University adheres to the principle of equal education and employment opportunity without regard to race, handicap, sex, color, creed or national origin. This policy extends to all programs and activities involving or supported by the University.*



**Embry-Riddle
Aeronautical University**

*A Warm
Welcome to*



***1981 AIR RACE CLASSIC
CONTESTANTS***



AIR RACE CLASSIC LTD.

P. O. BOX 187
ADDISON, TEXAS 75001

EDITOR PAULINE GLASSON
ASSISTANT EDITOR BARBARA LEWIS
PUBLISHER GOLDEN BANNER PRESS

INDEX

	PAGE
CONTESTANTS (ALPHABETICAL LISTING)	3
DESIGNATED AIRPORTS ON THE ROUTE	17
AIR RACE CLASSIC DIRECTORS	4-5
RACE START	6-7
ENROUTE STOPS	8-13
RACE TERMINUS	14
CONTESTANTS	18-31
HANDICAPS	16-17
EVENTS	17
AWARDS AND LEG PRIZES	32-34
1977 AND 1978 AIR RACE CLASSIC WINNERS	36
1979 AIR RACE CLASSIC WINNERS	37
1980 AIR RACE CLASSIC WINNERS	38

CONTESTANTS

Classic No.	Name	Page	Classic No.	Name	Page
9	Anderson, Dottie J.	22	13	Johnson, Kay J.	24
16	Baer, Phyllis	25	12	Klein, Dr. Betty C.	23
24	Banks, Marian	29	20	Lewis, Barbara	27
23	Blumberg, Juanita	29	12	Lowry, Esther P.	23
1	Brick, Kay	18	18	Mallary, Pauline	26
5	Churchill, Jan	20	27	Mapelli, Velda King	30
11	Coleman, Dolores	23	11	Maule, Susan DeEtta	23
33	Cull, Thelma	31	24	McKay, Sammy	29
21	Daly, Anna	28	9	Miller, Marilyn	22
17	Davison, Helen	26	22	Odorico, Ellie McCullough ..	28
21	Entrikin, Roberta J.	28	7	O'Kelley, Genie Rae	21
15	Etheridge, Dot	25	3	Palozola, Nancy	19
25	Futterman, Norma L.	30	17	Payton, Sophia M.	26
16	Gann, Dodie	25	25	Pickering, Aileen	30
20	Glasson, Pauline	27	19	Pilaar, Carolyn	27
33	Goetz, Barbara	31	23	Quenzler, Bonnie	29
19	Grubbs, Caroline	27	6	Ringenberg, Margaret	20
14	Hamilton, Mary Ann	24	2	Robertson, Merry	18
2	Harner, Anne	18	7	Shaw, Diane	21
8	Hinds, Alma	21	14	Shirley, Janet	24
13	Huffman, Consuelo Z.	24	1	Van der Linden, Pam	18
10	Hyde, Patricia	22	8	Wells, Joyce	21
3	Jayne, Marion	19	22	Wheeler, Gary	28
4	Jetton, Pat	19	10	Whyte, Edna Gardner	22
4	Johnson, Elinor	19	6	Williamson, Janet	20



Air Race Classic Ltd.

ARC Board of Directors and Contestants:

When the 1981 Classic terminates in Shangri-La, the following statistics will complete the five year history for the Air Race Classic: visited forty-three airports; flown into or over fifty-nine states; covered twelve thousand five hundred thirty-three statute miles; utilized an undeterminable number of ground crews, Flight Service and Weather Bureau personnel; crossed mountains and plains, arid land and lush farm land, viewed small and large rivers and touched on oceans.

As a result of the Air Race Classic, all who have planned or participated, have had the opportunity to utilize and increase aeronautical skills, meet interesting people and visit new areas.

A debt of gratitude to the Directors, who plan -- the Contestants, who participate. WE are the Air Race Classic.

Fly well and God Bless,

Velda King Mapelli



Velda King Mapelli
President



Pat Jetton
Vice President



Helen Wilke
Secretary/Treasurer



Susan Adler
Director



Pauline Glasson
Director



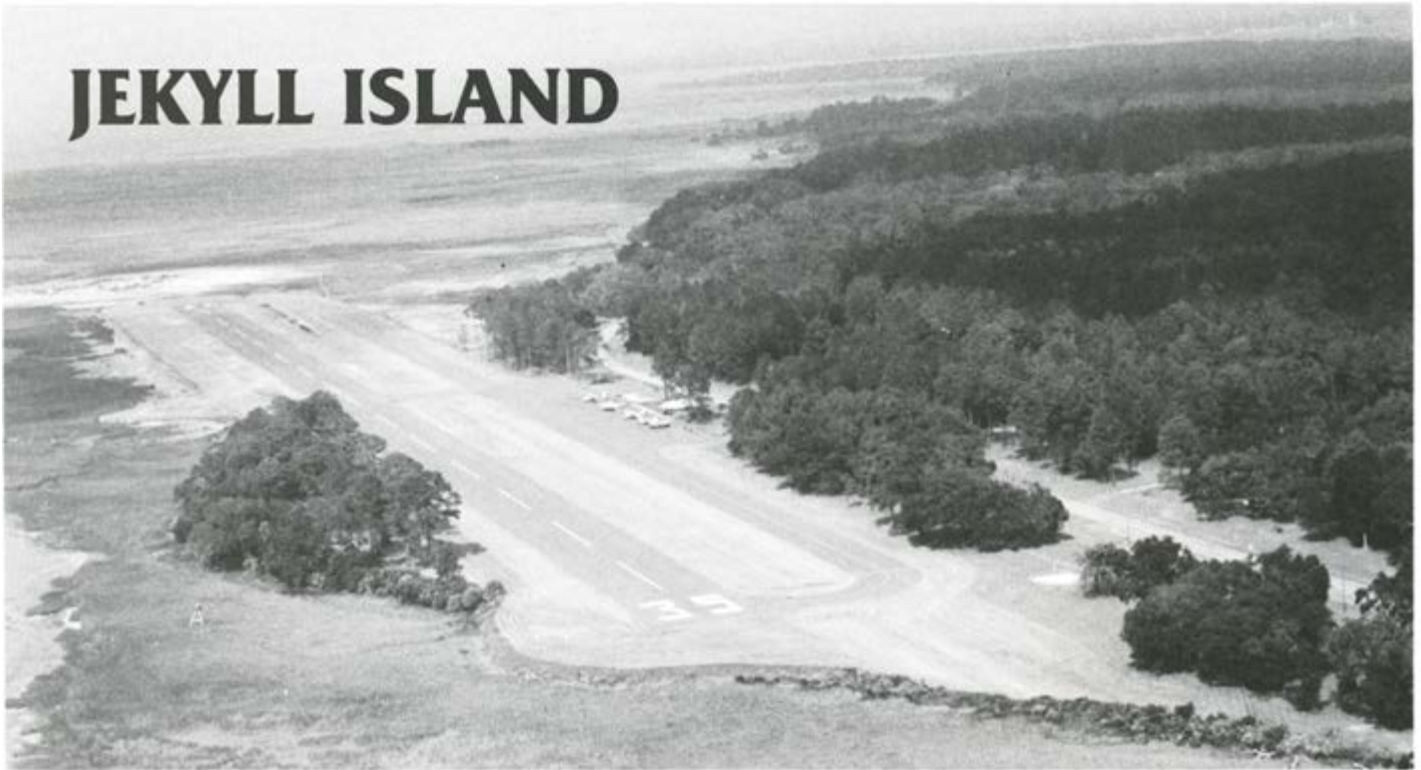
Esther Lowry
Director



Nicole Radecki
Director

D I R E C T O R S

JEKYLL ISLAND



It is with pride that we welcome you to Jekyll Island for the 1981 Air Race Classic, the first to start from the East Coast, and we look to this year's event as yet another tribute to the many skilled and dedicated lady pilots in this country.

Although there will be many preparation duties necessary to get you under way we hope that you will have some time to relax and enjoy the many beauties that this Island has to offer. Although small in overall land size, all the important amenities are present to make Jekyll a truly "Destination Resort". Our golfing facilities make us the largest golf resort in the State of Georgia, with sixty three holes in heavily wooded and flowering terrain. With a tennis complex of nine courts, one being the historic indoor court built in 1929 by J. P. Morgan for his personal use. Tennis is without a question, one of our major sporting activities. Miniature golf, biking, boating, fishing, or just hiking, provides most visitors with a vacation activity not experienced at home.

What would an Island resort be without it's beach and on Jekyll that means nine miles of it and during the month of June, it's at its best.



MRS. ALMA JACKSON
Owner Jekyll Island Airport



ROBERT W. MORRIS
Official Starter



LOUISE WHITE
Impound/Inspection — Chairman - Start

TIMERS
Deep South 99s

CAROLYN UPTON
LEE REIS
SHIRLEY RICE

Jekyll's history in itself is worth exploring. Over the hundreds of years of its existence, the Island has always been a "get away" rest and relaxation spot, even during the period of 1752, when the Island was renamed for the English nobleman, Sir Joseph Jekyll, and the armies used Jekyll for routine leaves.

Perhaps the most significant period was during the "Millionaire" era, 1886-1947, when the Island's main attraction, "The Millionaires Village", was built. Used for their private winter vacations, the men of prominence brought to Jekyll a Social Era that may never be experienced again in this country. Daily guided tours will take you back in time and into the way these "business men from the East" lived.

So, on behalf of the Jekyll Island Authority, Jekyll Island Hoteliers, and the general business community, we are delighted to have all of you attending ladies, your families and friends with us at Jekyll Island, Georgia.



JUDY HALL
Start Chairman



ROBERT S. CASE
Executive Director

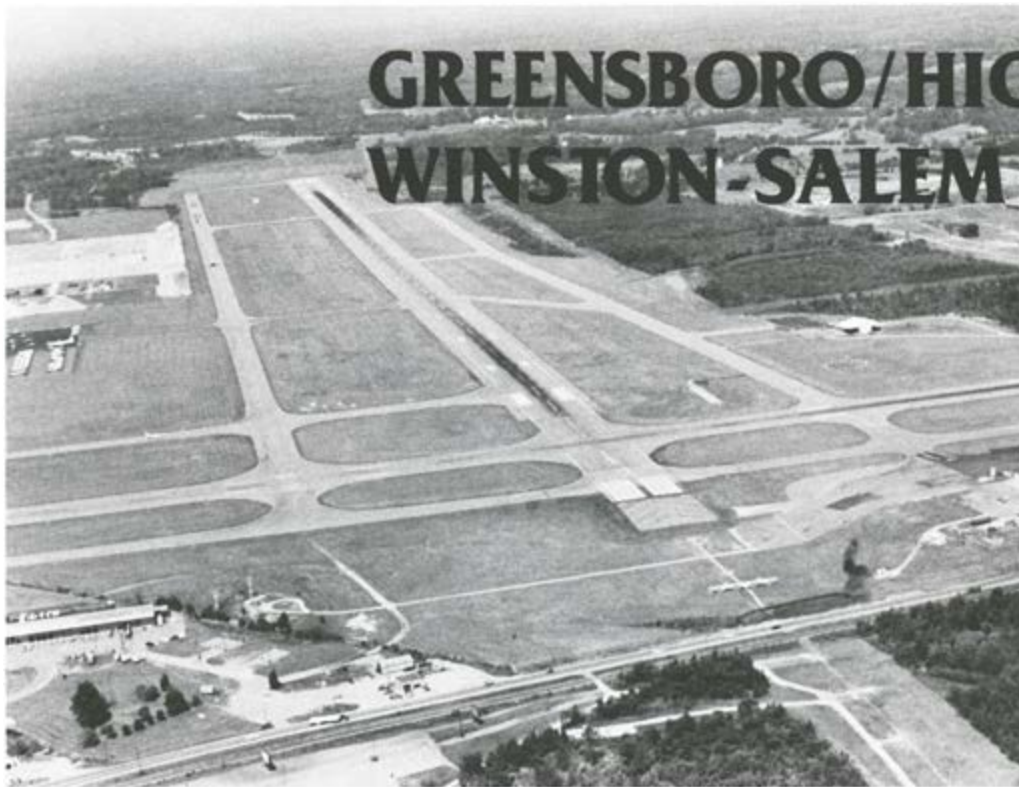


SYLVIA ROTH
Judge



FRANCES MILLER
Judge

GREENSBORO/HIGH POINT/ WINSTON-SALEM



The Greensboro/High Point/Winston-Salem Regional Airport is located in the rolling Piedmont of Central North Carolina. It is located 10 miles from Greensboro and High Point and 20 miles from Winston-Salem. It serves an area with a radius of 50 miles from the Airport. This primary air trade area is now estimated to contain a population of about 1,300,000 persons, one of the South's largest labor pools. The Greensboro/Winston-Salem/High Point Standard Metropolitan Statistical Area is the forty-seventh largest SMSA in the United States. It enjoys a broadly diversified economic base representing textiles, apparel, furniture, electrical and non-electrical

machinery manufacturers, metals, chemicals, pharmaceuticals and tobacco as well as agriculture. It is a transportation, communication, wholesale distribution, financial and insurance center and an oil pipeline hub.

Seven Air Carriers enplane more than 700,000 passengers annually. At the beginning of 1981 the airlines operated about 65 daily schedules offering regular through-plane service to over 45 cities in 23 states. A \$65,000,000 New Terminal Building is under construction to serve this traffic.

The Fixed Base Operators' facilities at the Regional Airport have been ranked consistently in the top twenty in the United States by the professional pilots fraternity. General aviation aircraft flying in intercity service constitute more than half of the airfield traffic and these aircraft carry many thousands of passengers through the airport each year. The Tower handles well over 400 daily aircraft operations at the present time, and 1981 bids fair to be its busiest year.

In 1929, the first Women's Air Derby started in Santa Monica, California and terminated at Cleveland Ohio. Was won by Louise Thaden of High Point, N. C.

WX: RICHARD COLWELL



R. G. SEKADLO
Airport Executive Director



TOWER PERSONNEL



LOUISE SMITH
Chairman GSO Stop



MAXINE WALKER
Timer

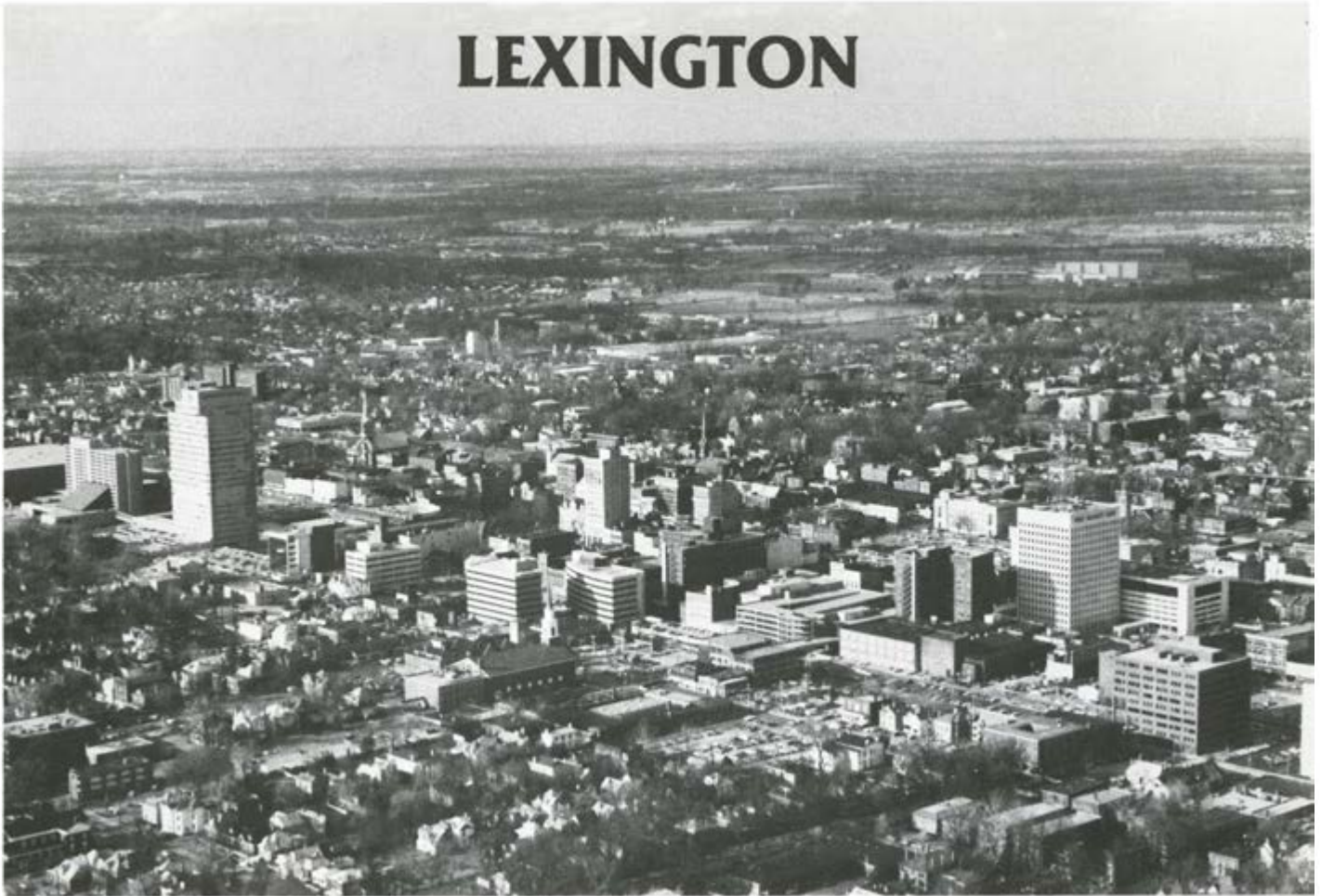


PAGE SHAMBURGER
Timer



NANCY WRENN
Timer

LEXINGTON



Lexington, a city of 210,000, is a unique blend of "old world charm" and a growing modern city nestled in the heart of the Blue Grass region. Lexington is world famous for both its hospitality and fine thoroughbred race horses. When approaching Lexington by air you are bound to be captivated by the panorama of mile after mile of plank horse fences and well manicured lush green pastures. The rolling hills are the home of such famous thoroughbreds as Citation, Whirlaway, Nashua, Secretariat, Seattle Slew, and Affirmed.

Lexington is also noted for its historical significance. The Hunt-Morgan House and Mary Todd Lincoln's childhood home are open daily for tours. The Headley-Whitney Museum features one of the finest collections of jewelry in

the world. Transylvania University, the first university west of the Alleghenies, is located near downtown Lexington.

This is also tobacco country, a growing center of the coal industry, a business capital, and the home of noted educational and medical facilities. Rupp Arena seats over 23,000 people for the home games of Kentucky basketball.

The area is dotted by fine shops, shopping centers and numerous fine restaurants, many of which feature such Kentucky specialties as hot browns and Burgoo (a spicy stew).

We look forward to your arrival so that we can treat you to southern hospitality — Kentucky style.

SKIP GUMBERT
Stop Chairman

WX: H. R. FEDERICKS

SHEILAGH WAGNER
KAYE MOORE BOHANNAN
Timers

BETTY DeLAURENTIS
London FSS



DICK SARGENT
Chief, ATCT Lexington



JAMES BROUGH
Exec. Dir. - Blue Grass Field



DIANE STAFFORD
Chief Timer



ALL KENTUCKY GALS
WILL BE DOING THEIR BIT FOR THE LEXINGTON STOP



Galesburg, Illinois, County seat of Knox County, was founded in 1837, and is located on the Burlington and Santa Fe Railroads, 183 miles west and a little south of Chicago.

It has made wonderful progress and today is a city of approximately 37,000 inhabitants. Its splendid improvements, buildings homes, business section, stores, banks, colleges, schools, industries, etc., give it the appearance of a metropolitan city. All this has been made possible by the fine progressive spirit of the people.

Galesburg is historically famous for the Lincoln-Douglas Debate held here in 1853. It is the birthplace of Carl

Sandburg (1878-1967), poet and Lincoln biographer. Also, the inventor of the Ferris Wheel was living in Galesburg when it was first put into use.

Galesburg Municipal Airport, spanning 900 acres, has a full ILS and a 5,800 foot north-south runway and is located 4 miles southwest of the center of the city on Route 34. Scheduled air service by Britt Airways. Each year for the last ten years, Galesburg has been host to the National Stearman Fly-In with as many as 70 World War II bi-planes in the skies of Galesburg.

Galesburg, the City of Opportunities, welcomes the Air Race Classic.



SAM MENDENHALL
Airport Manager



GEORGE MAXEY
FAA Tower Chief



HARREL TIMMONS
FBO Galesburg Aviation

BARBARA JENISON
Assistant Chairman



MARY LOU WRIGHT
Chief Timer



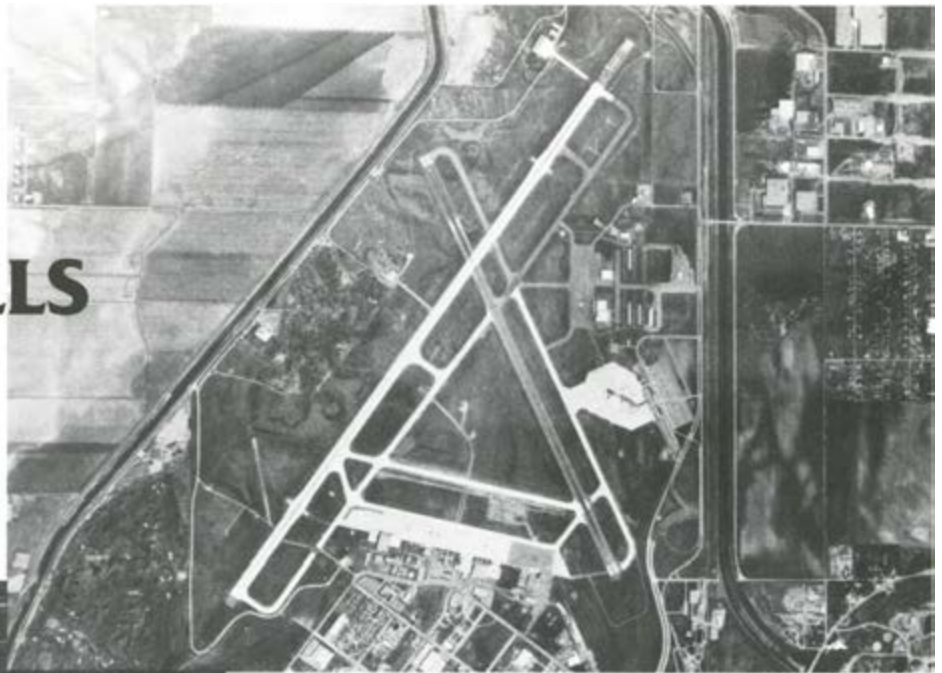
BERNICE NORTON
Timer



NANCY HUNTER
Assistant Chairman

BOB CASSENS
Stop Chairman

SIoux FALLS



Sioux Falls, South Dakota . . . This growing metropolis of 82,000 people lies in the southeastern corner of South Dakota at an altitude of 1,422 feet. The city is situated on the banks of the Big Sioux River and a natural Falls from which the city derives its name. The Sioux Indians called the river "Wakpa-lpaktan" which means "winding" as the river forms a huge "S" on its way to join the Missouri River.

The largest city in South Dakota had its beginning in 1856, although its history actually begins at the birth of the 19th century. The area which is now Sioux Falls became a part of the United States in 1803 when Thomas Jefferson purchased the Louisiana Territory from France.

The Sioux Falls of today is a growing, progressive and dynamic city. It is the state's retail and wholesale center and is growing in importance as a major industrial and financial center for the upper midwest. Over 170 manufacturers are located in Sioux Falls and in February 1981, Citibank (South Dakota), a subsidiary of Citicorp, opened a major bank-card processing center in Sioux Falls. Sioux Falls is also famous for its many cultural and recreational offerings including the Great Plains Zoo; Battleship South Dakota Memorial; Statue of David and many, many others.



NELLE ZABEL WHILHITE

Age: 88, Born 1893 Yankton, Dakota Territory USA, (now South Dakota)
 Nelle took her first flying lessons in November of 1927 in South Dakota. Her solo was Friday the 13th of January, 1928. In June of 1928, her father bought her an EAGLEROCK biplane, in Colorado Springs, CO. Nelle flew that plane back to South Dakota and spent 4 years on the Barnstorming circuit through the Midwest. She would join the Nebraska Air Tour every summer, when a number of aircraft left Omaha and went from city to city in Nebraska and South Dakota, hopping rides and giving Airshows. She was very good at tail spins and loop-the-loop (as they called it then).
 When Nelle Willhite solo'd, pilots licenses were not issued. When they became required, she obtained hers in 1929 at the old Soo Skyways airport in Sioux Falls. Pilots license #8242. She also obtained her Commercial license. Nelle is always eager to inform everyone that she is a Charter Member of the 99's, joining in 1929. Three years ago, E.A.A. chapter 289, Sioux Falls, S.D. paid all expenses so that Nelle was able to go to a National re-union of 99 Charter members. Nelle also says one of her proudest moments was when she met Amelia Earhart.
 Nelle, although 88, is very spry and we make sure she gets to the airport for our annual Air Show and all social functions. The aviation people in this area dearly love her and enjoy listening to her tales of the "old days". Nelle Willhite has consented to be on hand at Joe Foss Field for much of the activity during the stop. She really would like to meet as many of the pilots as possible and I know those that do spend a few moments with her will enjoy it.



KEN HIRSCH
Chairman



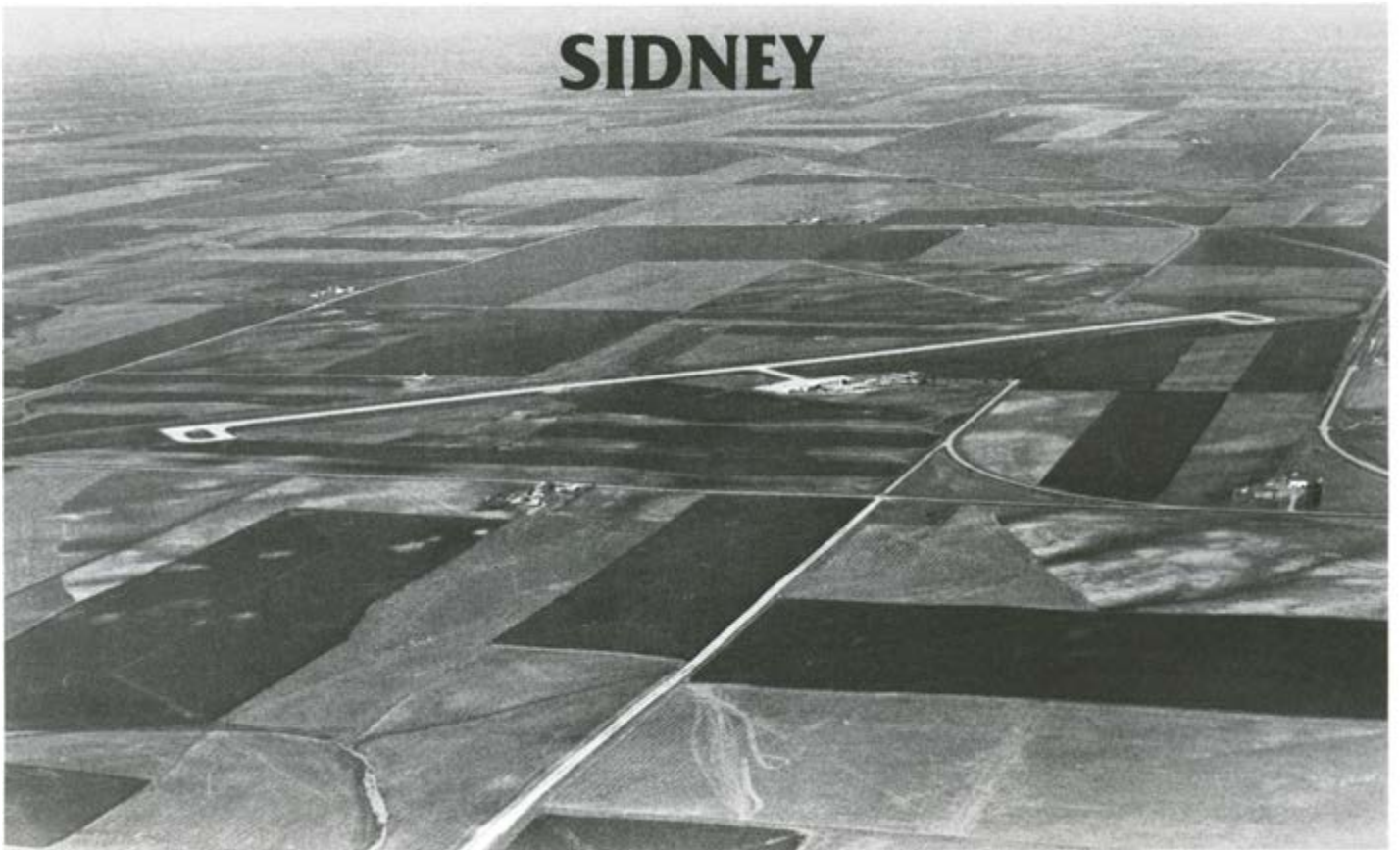
DICK KELLY
Assistant Stop Chairman

JEANNE and WALT BEDINGER
Timers

JOHN G. ORR
Airport Manager

WX: ROLLIN MANNIE

SIDNEY



Sidney, the county seat of Cheyenne County, derived its name from Sidney Dillion, then president of the Union Pacific Railroad in 1876. Frequent skirmishes between Indians and railroad workers led to the establishment of a military outpost near the townsite during the late summer of that same year. Fort Sidney was located about seventy rods to the east of the actual town and consisted of approximately fourteen buildings and a large scale parade ground. When the Fort was abandoned in 1894, the buildings were sold at auction or torn down. The ammunition storehouse, officers quarters and the commanders home still remain.

In 1876, with the discovery of gold in the Black Hills, the town of Sidney and the Fort became the major supply

point. After the abandonment of the Fort, Sidney was the principal trading center for a vast ranching and farming territory extending into "three states".

The Lincoln Highway was brought through the community during the 1920's. This first all-paved coast-to-coast route later proved to be of prime importance to the economy of the region. Sidney also provided landing facilities for the first transcontinental airmail route.

This charming city is the wheat capitol of Nebraska with Cheyenne County being the largest producer of wheat in the State of Nebraska.

"There is a lot to like about Sidney!
The opportunity center of the nation."



LLOYD CARR
Airport Manager



FRANK KENSEY
Chief of Line Personnel



WALT ROBERTS
Chief FSS



VERG LEHMKUHLER
Owner FBO Overland Air Serv.



KAREN LEHMKUHLER
Stop Chairman



DOTTIE ADCOCK
Timer



PAULIE PERRY
Chief Timer



KEETA THOMPSON
Timer

GARDEN CITY



Garden City's historical entrance as a Central Plains aviation center came June 15, 1929, when we hosted two trimotored, twelve passenger Fokker aircraft, landing at our airport on the first coast-to-coast rail-plane-rail passenger service. In New York, passengers boarded a New York Central train in the afternoon to Cleveland. There they boarded the Fokker aircraft of Universal Airlines, a subsidiary of American Airways (later American Airlines), and landed at Garden City at 5:20 PM that evening, to continue on overnight to Los Angeles via Santa Fe train.

C. J. "Buffalo" Jones was our first Mayor, and we are proud to have a Municipal Band that has entertained our citizens continuously for 102 years.

Garden City is a beautiful small city, boasting a large complete zoo, and the "World's Largest Free Concrete Municipal Outdoor Swimming Pool".

Being in the center of the nation's "breadbasket," and having a fair share of the cattle industry gives us a prosperous economy and low unemployment rate. We like people and people like us. We are a convention center for this part of the country and motels are usually not a problem.

We appreciate the opportunity to make this year's Air Race Classic a part of our history, and to welcome each and every one of you.



WX: JAMES C. MYERS



DEANE P. WILEY
City Manager



LEON DAWSON
Airport Manager



JACK L. LANGSTON
FSS Facility Chief



JEAN SPECKMAN
Stop Chairman



SUE FARMER
Timer



MONA LANE
Hospitality



TERI CHRISTIAN
Timer

DARLENE BROLIER
Chief Timer

SHANGRI-LA

Welcomes Air Race Classic



Thank you for selecting Shangri-La resort as terminus of the 1981 Air Race Classic. We're pleased to be a part of your program, and will do our best to make your stay a relaxing, fun time.

Located at the tip of Monkey Island on Grand Lake o' the Cherokees in northeastern Oklahoma, Shangri-La is one of the finest resorts in the entire Midwest. We recently received the Mobil Travel Guide Four Star Award for the fifth consecutive year.

The Golden Falcon Airpark is a favorite stop on demonstration flights and press evaluations of new aircraft. The runway is 4,000 feet long, paved and lighted. Two instrument approaches are published, and with the non-directional beacon located on the field, we're easy to find.

Our airport and surrounding scenic areas are used regularly for photography of new aircraft by manufacturers in Wichita and Oklahoma City, so you may recognize the settings in brochures and advertisements.

Resort accommodations include more than 300 suites, guest rooms, deluxe guest rooms, parlors and townhouses in addition to condominium residences available for rental.

Golfers will enjoy our Golden Tee golf course that is the home of touring pro, Bruce Lietzke. It's championship course of 27 holes is being expanded to 36 holes.

Tennis is at its best on championship indoor and outdoor courts with cushioned surfaces. The indoor courts are located in the Golden Leaf Recreation Center.

Also available at the recreation center are indoor and outdoor swimming pools, a health spa, bicycling and bowling. We're building racquetball courts, and they're scheduled for completion later this summer.

Powerboat and sailboat cruises are available from the marina, and the rental fleet includes sailboats, fishing boats, cruisers, pontoon boats and a houseboat. There are also sailing lessons, water skiing and fishing guides.

In the main lodge, there are retail shops, a pro shop for golfers, plus barber and beauty shops.

Preparations are underway for the National Governors Conference scheduled here in August of 1982. A \$20 million expansion program, to be completed for the conference, includes Vista Towers, an 11-story high-rise condominium development, and major expansion of lodge facilities.

Dining and entertainment choices are the Golden Eagle Ballroom with dining and dancing to the live, big-band sound of the Forrest Wasson 12-piece orchestra every night but Monday; the new tropical Tahitian Terrace with South Seas atmosphere, music by the popular Paranas every night but Tuesday and a special Polynesian menu; the Garden Room with gourmet dining; the Angus Room with a family-style menu for every meal of the day; and the Hogan, a Navajo-inspired pavillion with a country and western atmosphere and entertainment on Friday and Saturday nights by the Walnut Ridge Boys. Dance instruction for the "two-step" and "cotton-eyed Joe" is available at the Hogan.

Good flying in the Air Race Classic. We wish you tailwinds all the way to Shangri-La.

Thanks to Tulsa Chapter 99s and Hazel Jones



THELMA FRANK, TONI BEAR, and MELISSA WHITEHEAD
Timers - Tulsa 99s

Fly in to Shangri-La's Golden Falcon Airpark and "Take Five"!

Host for the 1982 National Governors Conference

Shangri-La, where the National Governors Conference will convene in 1982. A resort dedicated to bringing "five-star" quality to mid-America. Nestled in the northeast corner of Oklahoma's "Green Country" and on the peninsula of the Grand Lake o' the Cherokees, Shangri-La is the perfect year-round recreational resort. Fly in and enjoy the convenience of the private Golden Falcon Airpark. Its 4,000-ft. paved and lighted runway with instrument landing capabilities makes Shangri-La one of the easiest resorts to reach by air.

Something different each day of your stay!

Five kinds of recreation: Golf, 27 championship holes, soon to be 36 • Tennis, indoors and out • Bowling • Swimming and water sports • Health spas.

Five distinctive dining atmospheres: Golden Eagle Ballroom with live orchestra • Tropical Tahitian Terrace with live entertainment • Gourmet Garden Room • Country/western Hogan • Charming family Angus Room.

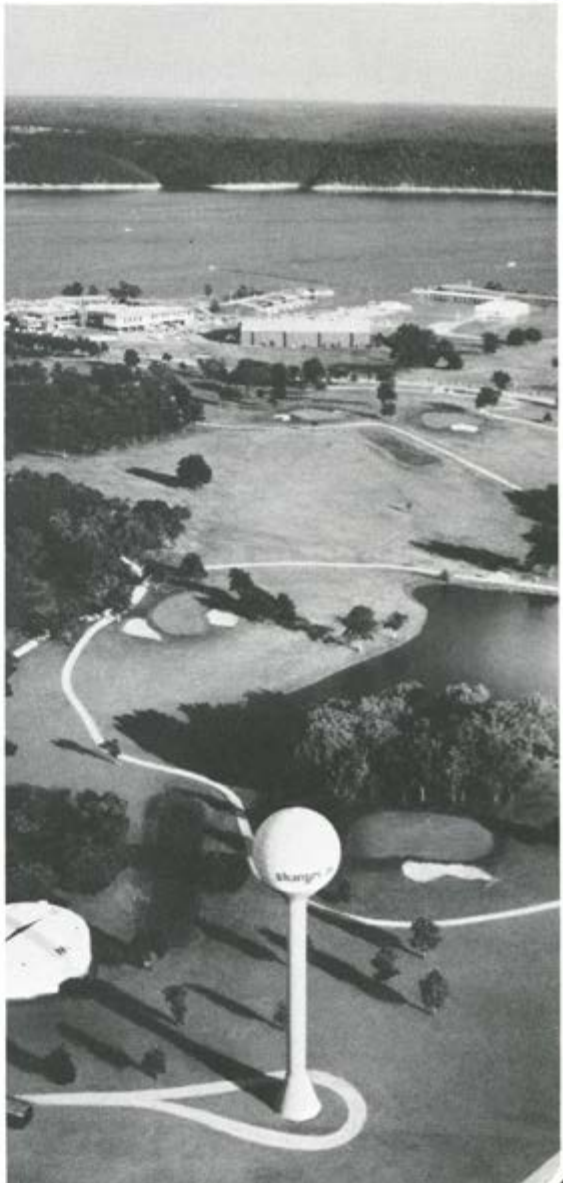
Fly-in convenience: 24-hour service • Jet and 100-octane fuel • Tie down service • Aircraft wash and wax • Pilot's lounge • "Touch and Go" gourmet convenience store • Courtesy transportation to lodge — call Unicom 122.7 from 10 miles out for van on arrival.

CALL TOLL FREE...or write

In Oklahoma 1-800-722-4903
Elsewhere 1-800-331-4060



Route 3, Alton, Oklahoma 74331/Phone 918-257-4204



Air Race Classic 1981 Handicaps

MAKE/MODEL	HP	MPH		
AERO COMMANDER			Cardinal II 177B (75-76) (Constant Speed Propeller)	180 135
200 D	285	187	Cardinal 177B (70-74) (C-S)	180 131
BEECHCRAFT			Cardinal 177	150 121
Duchess 76	360	177	Cardinal 177A (Fixed Pitch)	180 130
Baron	570	219	Cessna 172 RG Cutlass	180 146
Baron	520	211	Skyhawk R 172 XP (77-)	195 133
Travel Air	360	185	Skyhawk 172N (77-)	160 123
Bonanza P-35	260	181	Skyhawk II 172 (74-76)	150 119
Bonanza S	285	186	*Skyhawk 172 (68-73)	150 116
Bonanza V-35 A & B	285	185	Skyhawk 172 (62-67)	145 114
Bonanza C-33A, E & F	285	183	Skylark 175	175 126
Bonanza E-33C	285	189	(*Eligible only with: Propeller Model # 1 C 160/CTM 7553 Part # C 161001-0305)	
Bonanza G-33	225	179	GRUMMAN AMERICAN	
Bonanza 36, A-36	285	183	Cougar	300 173
Bonanza B-C 33	225	169	Tiger AA5B	180 143
Bonanza F-E 33	225	169	Cheetah AA5A (76-)	150 135
Sierra A, B-24R	200	143	Traveler AA5A (75)	150 129
Super III Musketeer A23/24	200	132	Traveler AA5 (72-74)	150 121
Sundowner C-23	180	125	MAULE	
Musketeer A-23	165	122	M-4 210C	210 137
Musketeer 23	160	118	M-4 220C	220 139
Musketeer Sport A23-19, B-19	150	115	M-5 180C	180 127
			M-5 235C	235 143
BELLANCA			MOONEY (Also Aerostar)	
Bellanca 14-19 A-C (without nosewheel doors)	260	169	M 201J (77-)	200 179
Super Viking 17-31 (Lycoming only)	290	171	Ranger M20C	180 152
Super Viking 17-31 (Lycoming only)	300	172	Statesman M20G	180 150
Decathlon 8 KCAB	150	121	Chapparral M20E	200 164
Citabria 7 KCAB	150	121	Executive M20F	200 160
Citabria 7 GCBC	150	120	Master M20D	180 126
Citabria 7 GCAA (Citabrias must be 40 gal.) (Bellanca Air Corp. only)	150	120	NAVION	
			Navion G	260 163
CESSNA			Navion H	285 177
Cessna 310 R	570	219	Navion H (75-76)	285 183
Cessna 310 F-L	520	210	PIPER	
Skymaster 336	420	157	*Super Cub PA-18	150 109
Skymaster 337 A-F	420	176	Cherokee PA-28-140	150 121
Skymaster 337G	420	183	Cherokee PA-28-150	150 121
Centurion 210 (69-)	285	182	Cherokee PA-28-160	160 123
Centurion 210 (67-68) G-H	285	181	Cherokee PA-28-180	180 131
Centurion 210 (66)	285	176	**Cherokee PA-28-235 (thru 77) (Fixed Pitch)	235 145
Centurion 210 (64-65)	285	177	**Cherokee PA-28-235 (thru 77) (C-S)	235 146
Cessna 210	260	174	Cherokee PA-28-236 (79-)	235 154
Cessna 205	260	147	Cherokee PA-28-235 Dakota (78)	235 151
Super Skylane P-206	285	152	Warrior PA-28-151	150 120
Super Skywagon U-206	285	152	Warrior PA-28-161	160 127
Skywagon 185 A-E	260	150	Warrior II PA-28-161 (78-)	160 128
Skylane R-182 (78)	235	163	Archer PA-28-181 (thru 76)	180 131
Skylane II 182 Q (77-)	230	149	Archer PA-28-181 (77-)	180 137
Skylane II 182 P (75-76)	230	148	Arrow PA-28-180R	180 149
Skylane 182 P (72-74)	230	145	Arrow PA-28-200R	200 152
Skylane 182 F-N	230	145	Arrow II PA-28-200R	200 153
Cessna 180 K (77-)	230	149	Arrow III PA-28-200R	200 155
Cessna 180 (75-76)	230	147	Comanche PA-24-180	180 147
Cessna 180 (63-74)	230	146	Comanche PA-24-250	250 172
Cardinal RG 177 (77-)	200	158	Comanche PA-24-260 & B	260 177
Cardinal RG 177 (74-76)	200	156	Comanche PA-24-260C	260 178
Cardinal RG 177 (72-73)	200	153	Comanche PA-24-400	400 199
Cardinal RG 177 (71-)	200	152	Cherokee 6 PA-32-260	260 146
Cardinal 177 B (77-) (Constant Speed Propeller)	180	138	Cherokee 6 PA-32-260 (78-)	260 153

(continued next page)

(Handicaps continued)

Cherokee 6 PA-32-300	300	153		
Cherokee 6 PA-32-300 (78-)	300	161		
Lance PA-32-300R	300	174	ROCKWELL COMMANDER	
Lance II PA-32-300R (78)	300	178	Commander 114	260 171
Aztec PA-23-250 (-76)	500	195	Commander 112 (72-73)	200 146
Aztec PA-23-250 (77-)	500	204	Commander 112A (74-76)	200 148
Twin Comanche PA-30, B & CR	320	187	Commander 112B (77-)	200 150
Twin Comanche PA-30 C	320	184	WING	
Twin Comanche PA-39	320	188	D-1 Derringer	320 190
Seneca PA-34	400	178		
Seminole PA-44-180 (79)	360	173		

(*Fuel quantity may be doubtful for this model)

FOOTNOTES:

1. Long range tanks do not raise handicaps.
 2. Removal of Wheel fairings does not lower handicaps.
 3. New type Piper fairings - check with ARC headquarters for handicap if not listed above.
- **PA-28-235 with new type fairings will be 151 MPH

DESIGNATED AIRPORTS ON THE ROUTE

AIRPORTS	STATUTE MILES
Jekyll Island Airport (start) Jekyll Island, Georgia	
Greensboro/High Point/Winston Salem Regional Airport, Greensboro, North Carolina	356.60
Blue Grass Field, Lexington, Kentucky	288.66
Galesburg Municipal, Galesburg, Illinois	368.69
Foss Field, Sioux Falls, South Dakota	370.64
Sidney Municipal, Sidney, Nebraska	361.79
Garden City Municipal, Garden City Kansas	250.12
Shangri-La, Afton, Oklahoma (terminus)	336.16
Total Statute Miles	2,332.66

Events

Impound opens	June 22, 1981	1:00 p.m. EDT
Impound closes	June 23, 1981	6:00 p.m. EDT
*Take-off Banquet	June 24, 1981	8:00 p.m. EDT
*Pilot Briefing	June 25, 1981	9:00 a.m. EDT
*Weather Briefing	June 26, 1981	9:00 a.m. EDT
Take-off	June 26, 1981	11:00 a.m. EDT
*Awards Banquet	July 1, 1981	7:30 p.m. CDT

*Mandatory for racer



KAY BRICK — Co-pilot
Fallbrook, CA

PAMELA VAN der LINDEN — Pilot
Fallbrook, CA



ANNE HARNER — Co-pilot
Greenville, NC

MERRY ROBERTSON — Pilot
Greenville, NC

CLASSIC 1

Bellanca Viking 17-31A 300 hp

Sponsored by:
Fallbrook Real Estate Company
Fallbrook, CA

Those 2250 hours — Commercial, single/multi land, Instrument — eight AWTARS — one Angel Derby — four Air Race Classics — many smaller races . . . yet Pam has time to serve on Aviation Commission of Chamber of Commerce; board of directors Fallbrook Community Airpark; member of National Real Estate fliers and Baja Bush pilots and is a ranking Senior Tennis player. Husband, Victor (bet he never gets to fly the Bellanca) and three children are pilots.

Kay not only has flown 6000 hours — with Commercial, single/multi land, Instrument and Flight Instructor but has written much on aviation. Kay did not become a lime rancher until she had a fling at: President of International 99s, chairman of AWTAR (Powder Puff Derby), recipient of SAI PAUL TISSADIER Diploma, News Aviation Hall of Fame, International Secretary P-47 Thunderbolt Pilot Association, Winner Nolde Derby, FAA women advisory counselor, World Who's Who of Women, Notable Americans of Bi-Centennial Era . . . And now add six AWTARS and one Air Race Classic . . . how do Kay and Pam have time for Palamor 99s?

CLASSIC 2

Beechcraft C-24R 200 hp

Sponsored by:
STEVENS BEECHCRAFT, INC.
Greer, South Carolina

Merry has an Instrument rating — 675 hours — married to an attorney — full time housewife — part time court reporter and mother of four. She has flown two Angel Derbies, three Classics and was a winner in the '77 Rose Rallye. A member of the 99s, Foothill Chapter, Merry loves racing because it affords her an annual reunion with favorite friends.

And welcome to the Air Race Classic, Ann — in fact — welcome to your first air race. A charter pilot for Aero, Inc., she has her Commercial, single/multi land, Instrument with 900 hours. Married to a physician, Ann is an RN in the Coronary Care Unit, an avid skier and tennis player and mother of two children.

Best Wishes to PAM & KAY from FALLBROOK, "AVOCADO CAPITOL OF THE WORLD"

Air Race Class # 1 is sponsored by **FALLBROOK REAL ESTATE COMPANY**, selling real estate since 1947. We specialize in avocado groves, retirement ranchettes and acreage in beautiful northern San Diego County. Contact Pam Van der Linden or Ian Forsyth.

FALLBROOK REAL ESTATE CO.

Fallbrook, Ca. 92028 330 S. Main (714) 728-1143

FALLBROOK REAL ESTATE COMPANY is also developing in another great recreation/retirement area of the USA — river front lots on The White River, in northern Arkansas and lake front/ lots on Table Rock Lake near Galena, southwest Missouri. Fly over this beautiful area while at the ARC Terminus. Get further information from Pam or contact Kevin Darracq at **Country Wood Realty, Mountain Home Arkansas. (501) 425-6366.**

GOOD LUCK

Merry Robertson and Anne Harner



Stevens Beechcraft, Inc.

WE SELL, WE SERVICE, WE CHARTER

GREENVILLE, S. C. NASHVILLE, TENN. LOUISVILLE, KY. KNOXVILLE, TENN.
Greenville Spartanburg Airport Metropolitan Airport Bowman Field Downtown Island Airport
823-878-8108 615-261-7776 502-451-2800 615-577-4481



NANCY PALOZOLA — Co-pilot
Mill Valley, CA

MARION P. JAYNE — Pilot
Palatine, IL



ELINOR JOHNSON — Co-pilot
Dallas, TX

PAT JETTON — Pilot
Carrollton, TX

CLASSIC 3

Piper PA-39 Twin Comanche 320 hp

Sponsored by:
Finefield Aviation
Huntley, IL
and
Radio Ranch, Inc.
(Avionics)
Polo, IL

Marion, with 3300 hours, Airline Transport, single/multi land, Flight Instructor/Airplane has flown since 1968 consecutively in the AWTAR, Angel, and Air Race Classic races finishing in top five places 97% of time. Member of Chicago area 99s, Past President of Reght Tennis Club, Landing's Airport Condo Assoc. (now on board of Directors), Past Board Member of Air Race Classic, President of Grand Prix Air Race, Ltd. professional horsewoman and AHSA judge (hunters and jumpers).

Nancy, employed by the Wang Laboratories, was Co-pilot with her mother in 1977 and 1979 when they won the Air Race Classic. Her racing memories also include two AWTAR and two Angel Derbies.

CLASSIC 4

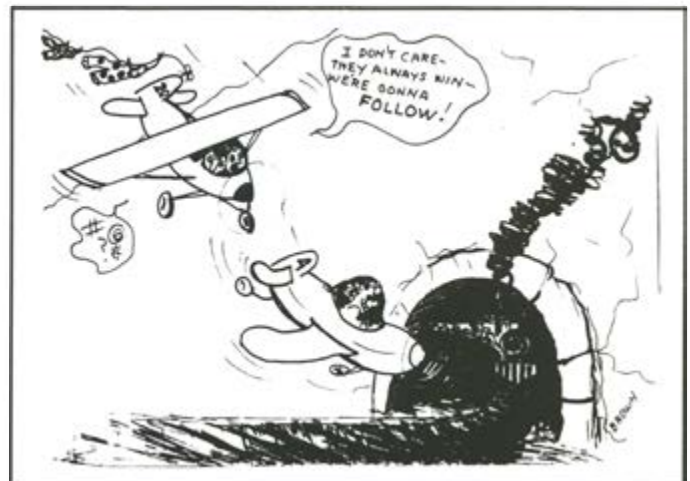
Beechcraft C33A 285 hp

Sponsored by:
THE PILOT SHOP
Addison Airport, Addison, TX
(pilot supplies)

WINNING TEAM of 1980 Air Race Classic! Pat, owner of Airport Flying School, has flown four Air Race Classics, many AWTARs, Angel Derbies and several smaller races. Commercial, single/multi land and Instrument makes a total of 3500+ hours. "I like the feeling of competing and accomplishment if I run a good race (even if I don't win) — enjoy meeting and communicating with women from all over . . . I get to leave home . . ."

Elinor likes this racing also — 1500 hours — Commercial with Instrument — enjoys: seeing other parts of this country, meeting fascinating women and besides it's fun. Elinor's husband is a pilot and the most avid supporter of this team. Redbird 99s are proud to have Elinor and Pat as members. Gals again — no help from those pilot sons!

Finefield Aviation
Mods and Repairs
Huntley, Illinois
and
Radio Ranch, Inc
AVIONICS
Polo, Illinois
Wishes Marion and Nancy
Good Luck and Tailwinds.





JAN CHURCHILL — Pilot
Chesapeake, MO



JANET WILLIAMSON
Co-pilot
Paulding, OH



MARGARET RINGENBERG
Pilot
Grabill, IN

CLASSIC 5

Cessa 172 Cutlass 180 hp

Jan with 3000+ hours uses her Airline Transport and multi land as pilot for Spenrock Associates. Has flown two AWTARs, one Classic, Garden State 300 and New England Air Race. Memberships include: Delaware 99s, Confederate Air Force, Civil Air Patrol. Jan is a licensed AKC dog show judge.

CLASSIC 6

Cessna 182N 230 hp

A member of the Indiana 99s, Margaret has 28,000 hours, Commercial, single/multi land, Flight Instructor Airplane/Instrument — WASP, Silver Wings — Fort Wayne Aviation Association — Summit Aero Club — has flown many races placing second in the '79 Air Race Classic and 5th in '81 Grand Prix. She has two children, daughter Marsha Wright, a pilot, four grandchildren and husband, Morris is a Banker and Realtor.

Janet is a science teacher with a brand new pilot certificate — going to be a flying family with husband, Robert, learning and daughter already licensed. Bet those two other children like the front right seat already. Welcome, Janet to the Classic — initiated into racing by a great pilot.

A GREAT BIG THANK YOU —



Las Vegas
Nevada

Thank you . . .

DALE CRAIG

Toledo Area

Chamber of Commerce





GENIE RAE O'KELLEY — Pilot
Knoxville, TN



DIANE SHAW — Co-pilot
Rio Grande, NJ



JOYCE WELLS — Co-pilot
Larkspur, CA

ALMA HINDS — Pilot
Redding, CA

CLASSIC 7

Piper Dakota PA 28-236 235 hp

Sponsored by:
Aviation Unlimited
Alcoa, TN

(Full Piper Dealer)
Shawcrest Mobile Home Park
Wildwood, NJ

Genie with more than 6000 hours is employed by University of Tennessee and Aviation Unlimited using her Commercial multi land, Flight Instructor Airplane/Instrument and Advanced /Instrument Ground Instructor ratings. Husband, Dr. Davis O'Kelley is a research chemist for the university. Genie's racing career started in 1975 with the AWTAR.

Diane is owner of Shawcrest Mobile Home Park — started flying in 1969 and hopped right into racing with four AWTARs and those licenses say Commercial, single/multi land, Instrument and Glider with 1500 hours — the cheering section consists of two children each — practicing the past 3 Classics — a great team!

CLASSIC 8

Cessna Skylane RG 235 hp

Would you believe 6 great grandchildren — 9 grandchildren — 3 children and Alma with 16,300 hours, Commercial, single/multi land, Instrument is still the only pilot in family? Licensed in 1939 — has flown three AWTARs and four Air Race Classics.

Joyce has 1540 hours, Commercial, single/land, Instrument, has flown five AWTARs and four Air Race Classics. She and husband, Hal have four children. A member of Bay City 99s — Chairman of S. W. Section Safety Education — school nurse — and has time for other interests as square dancing, music, gardening and sewing.

In appreciation:

Francis Brown
Doc Laird
Doug Lovelace

COME SEE US

MAJOR CHAPARRAL FACILITIES

Tradewind Aviation, Inc.
Tradewind Airport
Box 32020 806-376-5203
Amarillo, Texas 79120

Chaparral Aviation, Inc.
Addison Airport
Box 340006 214-980-8400
Dallas, Texas 75234

Chaparral Aviation, Inc.
Midland-Odessa Regional Airport
Box 8158 915-563-2033
Midland, Texas 79701

Chaparral Aviation, Inc.
San Antonio International Airport
Box 17628 512-824-7503
San Antonio, Texas 78217

Chaparral Aviation, Inc.
Victoria County Airport
512-578-3506
Victoria, Texas 77901

Chaparral Aviation, Inc.
Corpus Christi International
Box 9155 512-289-1881
Corpus Christi, Texas 78408

Tradewind Aviation, Inc.
Lubbock Regional Airport
806-762-0117
Lubbock, Texas 79412

Chaparral Aviation, Inc.
Kirkpoo Airport
4515 Jacksboro Highway
817-322-2084
Wichita Falls, Texas 76302

Chaparral Aviation, Inc.
Meacham Field
Box 443
817-589-0939
Ft. Worth, Texas 76106



Come see us.

SALES OFFICES

If your business or pleasure travel brings you to one of the cities served by Chaparral, we want to be your host.

Chaparral has full service facilities at each of our fixed base operations with the exception of no Line Service at Dallas. We want to serve your needs for fuel or other services that you might desire. All of the locations feature Beechcraft certified repair stations.

Chaparral employees are anxious to serve you.



DOTTIE ANDERSON — Pilot
Bluffton, OH

MARILYNN MILLER — Co-pilot
Reynoldsburg, OH



PATRICIA HYDE — Co-pilot
Eureka Springs, AR

EDNA GARDNER WHYTE — Pilot
Roanoke, TX

CLASSIC 9

Piper PA28-181 180 hp

Sponsored by:
BLUFFTON FLYING SERVICE, INC.
Fixed Base Operator

Dottie has acquired 28,000 hours as Flight Instructor Airplane/Instrument, FAA Examiner, Commercial, single/multi land and Advanced Ground Instructor. A member of the All Ohio 99s, she built her own Pitt Special, enjoys amateur radio as W80VV and in her spare time enjoys swimming, boating, bicycling and hiking. Dottie flew the Air Race Classic in 1980, and has flown many of the Angel Derbies, the 1960 AWTAR and Michigan Small Race.

Five years of racing as Dottie's Co-pilot, Marilyn, with Commercial, single/multi land, Instrument, Commercial Glider loves racing. She's current chairman of the newly formed Scioto Valley Chapter 99s and is employed as Equipment Specialist for the U. S. Government. Hobbies include sewing and swimming.

CLASSIC 10

Piper PA 24-400 400 hp

Sponsored by:
AERO VALLEY AIRPORT
Roanoke, TX
CHI-RHO TRUST, INC.
Eureka Springs, AR

Edna, owner/manager of Aero Valley Airport has been flying and teaching more than 50 years — is past President of International Ninety Nines and served as a commissioned Army Nurse in the Philippines. In 28,148 hours Edna has acquired a Commercial, single land/sea, multi land, Flight Instructor Airplane/Instrument, Helicopter, Glider, Advanced/Instrument Ground Instructor. Edna has won more than 100 trophies in competitive flying which includes several AWTARs, twenty five Angel Derbies (winning two) and many, many, others . . . Welcome, Edna and Pat to your second Air Race Classic.

Patricia, member of Arkansas 99s and International Commanche Society, raises Salukis and Yorkshire terriers . . . but mostly she directs "The Great Passion Play" . . . outdoor drama. With 1000 hours in that log book Patricia has a Commercial, single/multi land, Flight Instructor/ Airplanes and instrument. Husband, Robert, is a writer.

START

●

ENROUTE STOPS

●

TERMINUS

Profound gratitude to the individuals who willingly donated time and effort to coordinate the amenities necessary for a Cross Country Air Race.



Would you look at these scores?



DOLORESE COLEMAN
Co-pilot
Sylvester, GA

SUSAN DeETTA MAULE
Pilot
Moultrie, GA



DR. BETTY C. KLEIN
Pilot
Savannah, GA



ESTHER POWELL LOWRY
Co-pilot
Thomasville, GA

CLASSIC 11
Maule M5-180C 180 hp

Sponsored by:
MAULE AIRCRAFT CORP.
Spence Field, Moultrie, GA

Sue, granddaughter of the manufacturer of the famous Maule Aircraft, has acquired 525 hours and is a college student at Valdosta State College — Now hear this: Sue soloed 12 planes on her 16th birthday, then put that certificate with single land/sea in her pocket on her 17th . . . within four years rebuilt (with help) a 1938 Taylor-Young Taylorcraft . . . Many happy and exciting years in your flying, Sue.

Dee is putting her Commercial, single land/sea, multi land, Flight Instructor Airplane/Instrument/Glider and Advanced/Instrument Ground Instructor to use at Ayres Corporation teaching local and foreign students. Husband, James and two of their three children are pilots. Am sure Deep South 99s treasures Dee's and Sue's membership — Welcome to Air Race Classic!



How about that? I'm in the Winner's circle!

CLASSIC 12
Cessna R-172K (Skyhawk XP) 195 hp

Betty, a flying professor of Georgia Southern College, has 517 hours with Instrument. Chairman of the Deep South Chapter 99s, she uses her plane to visit and supervise student teachers around southeast Georgia. Betty's first air race will be cheered on by three children and one grandchild. Welcome, Betty, to the Air Race Classic.

Also a member of the Deep South 99s, Esther has accumulated 4000+ hours with Commercial, Flight Instructor/Airplane and Instrument. Husband, Carl, two children and two grandchildren are old hands at getting Esther off to air races — placing first in the '75 Angel Derby — fourth in the '77 Air Race Classic — and has flown many AWTARs. She is co-owner and co-General Manager of a Holiday Inn and Director on the Air Race Classic Board.

. . . sincere appreciation to —

JEPPESEN-SANDERSON

Englewood, Colorado

For your continued support to

AIR RACE CLASSIC

GOOD LUCK

From

**FLORIDA SUNCOAST
CHAPTER NINETY NINES**



CONSUELO HUFFMAN — Co-pilot
Westerville, OH

KAY JOHNSON — Pilot
Harrisburg, OH

CLASSIC 13

Piper PA 28 — Challenger 180 hp

*Sponsored by:
THE OHIO MASON
(Printing & Publishing)
Grove City, OH*

The challenge of racing for Kay is "getting the best from myself and airplane". With 435 hours, an Instrument Rating, member of Ohio 99s, flown two Buckeye Air Rallys and partner with sponsor. Husband, Delbert, and son are pilots.

Connie has flown three AWTARs, and Michigan Small Race. Commercial with 450 hours and the heap of fun — free balloon rating. Remember Connie, you cannot clear yourself to land as you do the traffic at Ohio State University Airport — bet you are a good controller. Welcome, Connie and Kay to the Classic.

**Thanks to Glenn Lanmon
GLASSON-LANMON
AERIAL PHOTOGRAPHY**



JANET SHIRLEY — Co-pilot
Kansas City, KS

MARY ANN HAMILTON — Pilot
Shawnee Mission, KS

CLASSIC 14

Piper PA24 — 260C 260 hp

If there is an air race, Mary Ann will probably be a participant. With the ink on her license still wet, she started racing in 1960 in the AWTAR, Angel Derby, three Air Race Classics, Michigan Small Race, Grand Prix and Illinois . . . 5000 hours with Commercial single/multi land, Instrument, Private Helicopter, and Hot Air Balloon. As a member of the Greater Kansas City Chapter 99s, she has held most chapter offices — nominating and Flying Activities Committee, North Central Section. Only one son is a pilot out of five children and two grandchildren, husband, Gordon, is a stockbroker. Interest outside of flying include gardening, cooking, reading, yoga, dancing and beach life! Busy lady!!

Entering her first air race, Janet, with Instrument has accumulated 300 hours. A member of the Greater Kansas City Chapter 99s, she likes to work on home-builts and enjoys Oshkosh. A teacher of remedial math in Jr. High in Kansas City Kansas School District, Janet is excited and ready for her first race. What better way to start a racing career than with a pro like Mary Ann. Welcome to the Air Race Classic, Janet.



Nose to nose — scrub a little and rub a little!





DOT ETHERIDGE — Pilot
Greenville, MS



DODIE GANN — Co-pilot
Friday Harbor, WA

PHYLLIS BAER — Pilot
Mercer Island, WA

CLASSIC 15

Beech Bonanza V-35 285 hp

Sponsored by:
AIR COMMAND
BEECH AERO CENTER
Greenville, MS

Dot is owner/operator of the sponsor . . . knows what racing is all about with five AWTARs — three Angel Derbies — Grand Prix and three Classics. Those 9000 hours are made up of FAA Examiner — Commercial, single/multi land, Flight Instructor Airplane/Instrument and Basic Ground Rating. Husband, Bob, is a pilot and owner of Farm Supply, Inc.



CLASSIC 16

Beechcraft F33 A 285 hp

Sponsored by:
FLIGHTCRAFT, INC.
Portland, OR
Seattle and Spokane, WA

Phyllis with Commercial, single/multi land, Flight Instructor/Airplane and Instrument has 850 hours. Four children (two pilots) and husband, Charles, retired PAA pilot will be her home cheering crew with plenty of advice. She is a member of Greater Seattle 99s, Aero Center manager (Flight Training Dept.), flown one AWTAR, two Air Race Classics and loves to play tennis.

A member of Greater Seattle 99s, Dodie has 750 hours with single/multi land, Instrument. Her racing experiences includes two Air Race Classics, London-Victoria Air Race, Baja and Acapulco Races. Ernest, husband, is an author and also a pilot. Would a win create writing material?

A great American dream.....



CIRCUS CIRCUS HOTEL/CASINO Dream became reality when Circus Circus opened its doors to an enthusiastic public in 1968 . . . an incredible casino-circus-midway complex . . . in the heart of the Las Vegas Strip.



COMING SOON—the Circus Train of Tomorrow—linking the Wonderful Worlds of Circus—Las Vegas.

For Las Vegas Reservations
(702) 754-0410
or Call Toll Free



CIRCUSLAND RV PARK 421 pull thru spaces with up to 50-amp full-utility hookups in country club surroundings.

For all Las Vegas Reservations from Utah, California, Oregon, Idaho and Arizona (800) 634-6833. All states (800) 634-3430. For Reno Reservations (800) 648-5010.



CIRCUS CIRCUS RENO An extravaganza of life and laughter awaits visitors of all ages to the pink and white Big Top located in the downtown center of the Biggest Little City in the world.



RENO



CIRCUS CIRCUS MANOR
The newest member of the Circus Circus resort family across the street from the Big Top . . . \$10 deluxe rooms.

For Reno Reservations
(702) 829-0711
or Call Toll Free



SOPHIA M. PAYTON — Pilot
Clearwater, FL



HELEN S. DAVISON — Co-pilot
Gibsonia, PA



PAULINE MALLARY — Pilot
College Park, GA

CLASSIC 17

Cessna 182RG 235hp

Sophia has 2,850 hours, Commercial, Instrument, Glider and the majority of her air racing has seen her in the winner's circle, placing first in the '78 Air Race Classic. A keen competitor she loves sailboat racing, deep sea fishing, walking, bicycling and swimming. A member of the Suncoast 99s, Sophia enjoys being a housewife after years of aviation employment. Husband Neal is a captain for U S Air Airlines.

Helen again joins Sophia in hopes of repeating their '78 winners title. The 860 hours acquired with Commercial and Instrument and Advanced/Instrument Ground Ratings, Helen is a home economics teacher — member of Greater Pittsburgh Chapter 99s — present governor and past secretary of Middle East Section 99s — flown many small air races and her husband, Ellison is an engineer and also pilot.

CLASSIC 18

Beechcraft C-23 180 hp

Choosing to fly solo this time, Pauline has flown five AWTARs, eleven Angel Derbies, (winning in '77) sixty five small races and two Air Race Classics. She has 3500 hours — Commercial, single land/sea, Instrument, Flight Instructor/Airplane. A former charter pilot and flight instructor, she is now a full time wife/mother and domestic engineer.

WE ARE SINCERELY GRATEFUL . . .



And they are off!



Pam Van der Linden - Profits from sales of Snoopy and RON kits go to Air Race Classic.



CAROLYN PILAAR — Pilot
Greenville, SC

CAROLINE GRUBBS — Co-pilot
Greer, SC

CLASSIC 19

Cessna 172RG 180 hp

*Sponsored by:
Gilford Mills
Greensboro, NC*

Carolyn is secretary to the South East Section 99s, Chairman of Foothills 99s — flight school owner and instructor — has 11,000 hours with Airline Transport, single land/sea, multi land, Flight Instructor Airplane/Instrument Ground Instructor and Airframe and Powerplant License. She has flown several AWTARs and Angel Derbies, the 1981 Grand Prix Air Race and has raced all of the Air Race Classics for fun and challenge.

Caroline is a college student, part-time receptionist for her surgeon and pilot husband, housewife and mother of two children. A member of the Blue Ridge 99s, she has 275 hours and raced in the '78 Angel Derby and also raced Auto Crosses and Phase II wings. Great to have you in the Classic, Caroline.



PAULINE GLASSON — Pilot
Corpus Christi, TX

BARBARA LEWIS — Co-Pilot
Corpus Christi, TX

CLASSIC 20

Cessna 172N 160 hp

Pauline is a board member of: Humane Society, Airport Advisory and Air Race Classic — member Tip of Texas 99s — has topped 32,000 hours — flew 24 AWTARs, several Angel Derbies and four Classics — holds Commercial, single land/sea, multi land, Flight Instructor Airplane/Instrument, Private Glider, Advanced/Instrument Ground Instructor. Husband, Claude, is an Aerial photographer and retired pipeline patroller.

Barbara — at last — has been on Pauline's stand by list since 1968, her first of two AWTARs and Intercontinental (still puzzled how one can win all leg prizes but one and only place fifth). In her opinion, if not flying the race the next best fun spot is being a timer. Husband, Joe, is a pathologist — four children, one grandchild, but Barbara is the only pilot.

**FLYING
SOUTH?**

Plan to spend the night
at the Holiday Inn of
Thomasville, Georgia.

Just call Unicom 122.8

We will be waiting at the
airport.

GOLDEN
BANNER

Press Inc.

CORPUS CHRISTI, TEXAS



ANNA DALY — Pilot
Millville, NJ

ROBERTA ENTRIKIN — Co-pilot
Petersburg, NJ

CLASSIC 21

Cessna 172 L 150 hp

Sponsored by:

K-TRON INTERNATIONAL INC

Phoenix, AZ

MOORE FUELS INC

Vineland, NJ

MARK'S ANTIQUES AND COLLECTABLES

Millville, NJ

MILLVILLE AERO CLUB

Millville, NJ

Welcome Anna and Roberta!! Anna is a member of Eastern Pennsylvania 99s, Treasurer of Millville Aero Club and Captain in Civil Air Patrol. Commercial with Instrument and with 24 years of teaching school I'll bet that Gound Instructor rating came easy. In the 1,400 hours Anna has flown an Angel Derby also an Empire State and Garden State.

Roberta, what an interesting occupation — "designer of glass bottles" at Wheaton Glass. Member of Eastern Pennsylvania 99s, Millville Aero Club and 2nd Lt. in Civil Air Patrol — 250 hours flying and one Garden State race — we hope the Classic leaves you with happy memories.



GARY WHEELER
Co-pilot
Greenville, SC



ELLIE McCULLOUGH ODORICO
Pilot
Vero Beach, FL

CLASSIC 22

Piper PA-28-140 150 hp

Sponsored by:

*Tom Holman, President SUN AVIATION
Vero Beach Municipal Airport, Piper dealer*

Ellie likes the interesting life — has made 16 sky-diving jumps, is executive secretary to city manager, Vero Beach. She holds Commercial, Instrument and Glider. In 2,500 + hours, she has ferried Mooney and Cessna aircraft and performed marketing surveys for Mitsubishi re MU-2 thru IRM, International in New York. Ellie is very active in Florida Gulf Stream 99s — "I like racing because of the competition and comradeship displayed and find flying relaxing." Husband, Louis, is development/engineer with Piper Aircraft and pilot. Now we know why Ellie is so proud of Cherokee "Schatzy". Racing includes seven AWTARs — four Angel Derbies and we welcome Ellie to the Classic.

Gary's hobbies are water skiing, scuba diving and flying. Very relaxing after a hard day as nurse at Greenville General Hospital . . . in the 500 hours Gary has acquired a Commercial, single land/sea and Instrument. Presently secretary of the Foothills 99s and former secretary of the unique International Flying Nurses Association.



You haven't seen the real
West until you've seen . . .

**TUOLUMNE COUNTY
California**

. . . historic wonderland in the
heart of the scenic sierra.

SERVED BY

The Daily Union Democrat

LEADING NEWSPAPER OF THE MOTHER LODGE

Sonora, California

SINCE 1854





BONNIE QUENZLER — Co-pilot
Merritt Island, FL

JUANITA BLUMBERG — Pilot
Casselberry, FL



SAMMY MCKAY — Pilot
Grand Blanc, MI



MARIAN BANKS — Co-pilot
San Diego, CA

CLASSIC 23

Beech Baron 95A55 520 hp

*Sponsored by:
Acme Glass Company, Inc.
(Aircraft And Auto Windshields)
Orlando, FL*

Everyone loves winners! Juanita and Bonnie recently won First Place in 1981 Grand Prix Air Race — Congratulations!

Former aviation writer and ATC controller, Juanita is past chairman of Florida Spaceport 99s — currently Vice-chairman of Aviation Noise Abatement Council at Orlando Int'l and serving on Advisory Council at Herson Airport in Orlando, Juanita still finds time for golf, photography and gardening. She and pilot husband Lewis have four children, 2 grandchildren. With single/multi land and Instrument, Juanita has logged 1,340 hours.

"Air racing is more important than just the competition. It presents general aviation to the non flying public in an interesting and exciting way". Well said, Bonnie! And congratulations on your recently getting your CFII. Bonnie shows over 1,540 hours in her log book and has competed in 9 major air races, won 1977 Angel Derby and placed in the top 6, six times. She is past chairman of the Florida Spaceport 99s . . . has Commercial, single land/sea, multi land, Flight Instructor/Airplane and Instrument.



Party Time!

CLASSIC 24

Cessna 210J 285 hp

*Sponsored by:
"Dear ole Dad"
Auto Dealership*

Just about can't have a race without this team — made second place in Classic in '80 — Sammy is member of Michigan 99s — add up 19 AWTARs, plus 10 Angel Derbies, four Classics, and winning two of 26 small races. Sammy's log says Commercial and 2,900 hours. Husband, George and son leaves the flying for Sammy.

Marian with several near firsts won 1972 AWTAR out of 17 flown and was president of AWTAR three years — we appreciate you, Marian — her certificate says Airline Transport, single/multi land, the unusual Flight Instructor/Instrument with 3,200+ and member of San Diego 99s. Marian and pilot son own/operate a roller skating rink.

The THERMACON so effectively protects avionics and interiors from costly heat damage that Citation and Learjet offer it as optional equipment.

Fabricated from either our well known MPA metallic or new F, HALOGEN reflectors, the THERMACON offers craftsmanship and durability unmatched by imitative products. Write or phone us for information on these remarkable heat screens.



Manufactured and distributed by
Morgan Stanford Aviation
1805-J Second Street, Berkeley, CA 94710
(415) 841-6642
©1980 Morgan Stanford Aviation

Scoring will be by:
Judy Hall on the Canon Computer
Courtesy of Canon USA
Dallas, Texas



NORMA FUTTERMAN — Pilot
Beverly Hills, CA

AILEEN PICKERING — Co-pilot
Sherman Oaks, CA

CLASSIC 25

Beechcraft Bonanza A36 285 hp

A member of the Los Angeles 99s, Norma has 2,400 hours with Commercial, single land/sea, multi land, Instrument, Glider, Basic Ground Instructor. She has flown three AWTARs, eight Angel Derbies, four Air Race Classics, Grand Prix, PARs, Cal-Baja, Palms to Pines. Norma says, "I race because if I don't send in an entry everyone says, "Whatdaya mean, you're not going in the race?" Besides that, I just can't stand for a race to take off without me — besides not putting diamonds in ARC pin if I don't fly all the races . . . As for other background our family has been in KY since they found it, but they don't amount to a whole lot (at least that's what the in-laws say) . . . I was born so far out in the sticks they had to break day with a -pole . . ." Norma's hobbies are photography and cooking and a prevailing wit.

Aileen placed third in her first air race the 1950 AWTAR as a new pilot with 50 hours. She now has acquired 1770 hours with Commercial, single land/sea. She obtained charter for Long Beach Chapter 99s and was their first chapter chairman in 1952 and the Los Angeles chairman in 1980. A Realtor in CA for 20 years as Pickering Realty, Sherman Oaks, she plays golf and tennis in spare time.



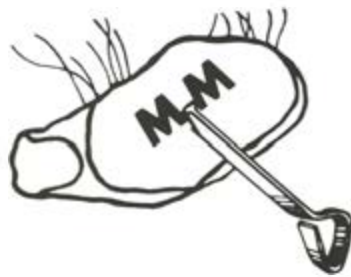
VELDA KING MAPELLI — Pilot
Las Vegas, NV

CLASSIC 27

Piper PA 24-260B 260 hp

*Sponsored by:
Mapelli Meat Company, Inc.
Las Vegas, NV*

Velda lists her interests as flying, golf, flying, tennis, flying and skiing, so you can see her first love must be flying! And it's a good thing too since she is president of Air Race Classic. Also active in Las Vegas Valley 99s, Velda holds Commercial, Instrument with 2,400 hours. Co-Owner of Mapelli Meat Co. with pilot husband, Gene, Velda has flown in eight Angel Derbies, four AWTARs and this year makes her fourth Air Race Classic. Thanks, Velda, for your enthusiasm and devotion to Air Race Classic.



BRAND OF DISTINCTION

God designed a woman — helped design an airplane —
helped design the Air Race Classic so his beautiful
women pilots could fly in it.
Good luck to all — especially MY BRIDE.

DISTRIBUTORS OF:
MONFORT OF COLORADO
BEEF AND LAMB
PRODUCTS

MAPELLI MEAT COMPANY, INC.
3111 S. Valley View Blvd.
Las Vegas, Nevada 89102
(702) 876-9000



BARBARA GOETZ — Pilot
Fair Oaks, Ca



THELMA CULL — Co-pilot
Fair Oaks, CA

CLASSIC 33
Piper PA 24 260 hp

Sponsored by:
Goetz Equipment Company
Sacramento, CA
(heavy equipment)

This active Barbara: owner, secretary, treasurer, Goetz Equipment Company — member Sacramento Valley and International treasurer of Ninety-Nines. Each year adds time in log book as corporate pilot. 1,650 hours says Commercial, Flight Instructor/Airplane, Instrument, Helicopter and gaze on this — A & P mechanic — I'm counting this will make the 30th race flown. We love you!

Thelma, member of Sacramento Valley and Governor of Southwest Section of Ninety Nines is employed by San Juan Unified School System. Husband, Neil, is a computer programmer and yes, a pilot. Thelma has an interesting 520 hours — with two each AWTARs and Classics, nine Palms to Pines and one PAR — A great team!

**HARTZELL, MCCAULEY,
AND SENSENICH SPECIALISTS**

Propeller Distributors for Hartzell & Sensenich
We stock for All Popular Models

Extensive Exchange Program

We Export  Worldwide

Facility at Jefferson County Airport
for Prompt Removal, Installation

Open Saturday 10 a.m. — 4 p.m. Daily Until 8 p.m.
Airport Delivery and Pickup



W. 120th Ave. & Kipling St.
Broomfield, Colorado 80020
TELEX 454326 SAMARAS DVR
Phone (303) 469-1749

Jefferson County Airport
Sue Houston,
Owner/Manager
Out-of-State (800) 525-8756

Our sincere thanks to
Gene Rae O'Kelley and Diane Shaw
Malsie Stears
H. Glenn Buffington
Mary Ann Hamilton & Jean Wilson
Elle McCullough Odorico
San Joaquin Chapter 99s
Dallas Redbird Chapter 99s

**Full-Support
Aircraft
Service**
**With a
WINNER**

AERO ASSOCIATES
Hangar B4A
Jeffco Airport • Broomfield, Colo. 80020
303-466-1961



AWARDS

FIRST PLACE

Air Race Classic award for Pilot and Co-Pilot and \$5,000.00 cash. AVSTAR Electronic Flight Computer donated by Jeppesen-Sanderson. Perpetual Trophy donated by Toledo Area Chamber of Commerce.

SECOND PLACE

Air Race Classic award for Pilot and Co-Pilot and \$3,000.00 cash. AVSTAR Electronic Flight Computer donated by Jeppesen-Sanderson.

THIRD PLACE

Air Race Classic award for Pilot and Co-Pilot and \$2,000.00 cash.

FOURTH PLACE

Air Race Classic award for Pilot and Co-Pilot and \$1,500.00 cash.

FIFTH PLACE

Air Race Classic award for Pilot and Co-Pilot and \$950.00 cash.

SIXTH PLACE

Air Race Classic award for Pilot and Co-Pilot and \$700.00 cash.

SEVENTH PLACE

Air Race Classic award for Pilot and Co-Pilot and \$600.00 cash.

EIGHTH PLACE

Air Race Classic award for Pilot and Co-Pilot and \$500.00 cash.

NINTH PLACE

Air Race Classic award for Pilot and Co-Pilot and \$400.00 cash.

TENTH PLACE

Air Race Classic award for Pilot and Co-Pilot and \$350.00 cash.

BEECH AIRCRAFT AWARDS

\$1,500.00 if first place winner is flying a Beechcraft.

\$ 500.00 to Contestant flying a Beechcraft placing highest in the race if a competitive airplane wins first place.

CESSNA AIRCRAFT AWARDS

Trophy for each: Pilot and Co-Pilot for the first four highest placing Cessnas.

HIGHEST SCORE FOR FIRST TIME RACERS (never flown any type race) \$100.00 by Virginia Dare Mattiza in memory of Tony Urban.

THE MEATHEAD AWARD (lowest score)

By: Mapelli Meat Company, Las Vegas, Nevada

A \$100.00 box of finest Monfort of Colorado sirloin strip steaks, air freighted to Pilot and Co-Pilot.

TO THE TEAM WITH THE HIGHEST SCORE

(Pilot and Co-Pilot) over sixty years of age \$400.00 donated by Jean and Charles Schulz.

HIGHEST SCORE IN EACH CLASS OF AIRCRAFT OF WHICH THERE ARE AT LEAST THREE IN COMPETITION.

\$160.00 each: donated by Jean and Charles Schulz 145 — 179hp; 180 — 212hp; 213 — 252hp; 253 — 299hp; 300 — 570hp.

* LEG PRIZES

Leg #	From	To	Place	Award	Thanks to:
1	Jekyll Island	Greensboro	1	\$75.00	Carolina Chapter 99s Carolina Chapter 99s
			2	\$25.00	
2	Greensboro	Lexington	1	\$50.00	Kentucky Blue Grass Chapter 99s Kentucky Aviation Association
			2	\$50.00	
3	Lexington	Galesburg	1	\$75.00	Sacramento Valley Chapter 99s The Astrotech Corp. Phoenix, AZ
			2	Model LC-2 Digital Clock	
4	Galesburg	Sioux Falls	1	\$99.00	Colorado Chapter 99s APS PRODUCTS, INC Redding, CA
			2	Propeller Emergency Safety Kit	
5	Sioux Falls	Sidney	1	\$75.00	Sacramento Valley Chapter 99s Ted Nelson Co. Livermore, CA
			2	Oxygen Flow Meter	
6	Sidney	Garden City	1	\$75.00	Garden City Area Chamber of Commerce and Finney County Convention and Tourism Bureau
			2	\$25.00	
7	Garden City	Shangri-La	1	\$75.00	Cimarron Chapter 99s Cimarron Chapter 99s
			2	\$25.00	

*Teams placing in top ten not eligible for leg prizes



You can wake up, chief, that was the last one!

A special thank you for these prizes:

Bumble-Bike Motors, Mr. Mickey Harbin	Bumble Bike
Autel Corporation, Catherine Morris, Marketing Manager	50% discount on any or all elements of the Quick-clamp yoke mounting system.
Puritan-Bennett Aero Systems Co.	Portable Oxygen Unit
Morgan Stanford Aviation, Mr. Jim Allen, President	Thermacon Heat Screen
Identity Check Company, Mr. George V. Johnson	300 checks
Identity Check Company, Mr. George V. Johnson	300 checks
Wheel Lock Incorporated, Mr. Mark Sork, President	One Wheel Lock
Callaway Gardens, Robert R. King, V/President Marketing	2 persons 2 nights
Plantronics, Incorporated, Mr. Lee Sanders, Customer Service Engineer	Head Set & Suitable Accessories
Hamilton Industries Inc., Thomas H. Hamilton, President	Pilot Lamp
Airport Lakes Holiday Inn, Miami, Florida	5-7 days complimentary stay
American Motor Inns, Inc. Mr. Howard Feiertag Frenchman's Reef, Virgin Islands or Holiday Inn, Alexandria, VA	5 days complimentary stay
Aero Propeller, Sue Houston Mitchem	Propeller with a clock in it
Champion Spark Plug Company	Box of 12 Spark Plugs
Circus Circus, Las Vegas, Nevada Mel Larson, Vice President Marketing/Public Relations	Three day/two night stay for two at Circus Circus Towers or Circus Circus Manor or four nights in the new and luxurious Circusland RV Park.



Yea — we had a good flight!



Oh my gosh! Did I do that?

“Good work, at reasonable rates, with minimum downtime. That’s why I take my Beechcraft to the Beechcraftsmen.”



“My Beechcraft Bonanza means a great deal to me. I use it a lot for both business and pleasure. So when it needs repairs or maintenance work, I want to make sure it gets fixed right and doesn’t spend any unnecessary time in the shop. That’s why I take it to the Beechcraftsmen.”

When your Beechcraft needs service or maintenance work, bring it to the Beechcraftsmen. You’ll find them at Beechcraft Quality Service Centers all across the United States.

They have all the right equipment, they’re trained, and they know what they’re doing. So they do things right. The first time. And that saves you a lot of time and bother.

The Beechcraftsmen also stock and use Genuine Beechcraft Parts. Parts that are manufactured to the same exacting standards as the originals to ensure reliability.

When you want your Beechcraft repaired right, repaired with minimum downtime, and repaired at a reasonable cost, take it to the people who know it best. The Beechcraftsmen.



Member General Aviation Manufacturers Association



The Beechcraftsmen.

**Only at Beechcraft
Quality Service
Centers.**

FIRST AIR RACE CLASSIC WINNERS — 1977



Left to right —
 Marion Jayne, Nancy Jayne, Joyce Wells, Luana Davis, Norma Futterman, Virginia Showers, Esther Wright, Judy Hall,
 Elinor Johnson, Pat Jetton, Janice Free, Jean Rose, Pat Gatlin, Pat Friedman, Velda Mapelli, Stephanie Mapelli and Ali
 Sharp (inset).

SECOND AIR RACE CLASSIC — 1978



Helen Davison

Sophia Payton



Dot Etheridge



Dot Wilson



Pat Jetton



Elinor Johnson



Helen McGee



Norma Draper



Sammy McKay



Winnie DePerow



Marion Jayne



Patricia Keefer



Helen Wilke



Kathy Long



Barbara Goetz



Thelma Cull



Joyce Wells



Alma Hinds



Susan Adler



Mary Santosuosso

THIRD AIR RACE CLASSIC WINNERS — 1979



Marion Jayne

Nancy Jayne



Margaret Ringenberg

Pat Wilson



Claire Walters

Eleanor Ruby Moore



Virginia Wegener

Lynn Carey



Tanya Cunningham

Caroline Ann Morey



Joan Painter

Shirley Tanner



Dot Etheridge

Dot Wilson



Joyce Wells

Alma Hinds



Helen Davison

Sophia Payton



Ilvone Potter

Jan Gammell

FOURTH AIR RACE CLASSIC WINNERS — 1980



Pat Jetton

Elinor Johnson



Sammy McKay

Marian Banks



Dot Etheridge



Patricia Keefer

Marion Jayne



Dottie Anderson

Marilynn Miller



Ali Sharp

Berni Stevenson



Alma Hinds

Joyce Wells



Suzanne Jablonski

Barbara Persons



Carolyn Pilaar

Gary Wheeler



Sophia Payton



Sherry Harper

**WISHING YOU ALL
THE BEST OF LUCK!**



REDWOOD EMPIRE ICE ARENA
SANTA ROSA, CALIFORNIA



The 1981 AIR RACE CLASSIC

**Directors and Participants
would like to especially thank
the people of Jekyll Island
and Shangri-La
for all of their efforts
to make the beginning
and end of the race
so special for us this year!**

**To all the people
at all the stops
along the way . . .
we think you are tops!**



1981 CESSNA TURBO SKYLANE

HOW TO IMPROVE THE WORLD'S HIGH-PERFORMANCE SALES LEADER? TURBOCHARGE IT.

No one else builds an airplane that delivers what Skylane does. And so far, no one else has even come close.

This year, the best gets even better with turbocharging. The new Turbo Skylane is a powerful performer. With 1,387 pounds of useful load, it takes off in just 790 feet, climbs at 965 fpm, cruises at 158 knots and has a maximum range of 920 nautical miles. The increased use you get from Turbo Skylane on hot days or high altitudes makes it a lot of airplane for your business dollar.

The normally aspirated Skylane has a 136-pound increase in useful load in 1981. At almost 1,400 pounds, that means another employee, passenger or more cargo. And Skylane still gives you the largest cabin of any 4-place single, the best range in its class, and impressive Skylane performance.

Improvements for 1981 include new avionics cooling, improved cabin ventilation, and a tighter door seal for a quieter cabin.

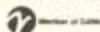
Skylanes are backed by the best warranty in aviation, plus their engines are prorated to TBO. When you purchase a Skylane, you get all the benefits of the Cessna System: our leadership in research and development, our worldwide dealer/service network. The world's most widely used flight training system. The world's best aircraft financing from Cessna Finance Corporation and much more. It all adds up

to a definite competitive edge... make it *your* edge!

For more information, see your Cessna Dealer (see the Yellow Pages), or complete the coupon below. If you wish to request a trade-in evaluation of your current aircraft or a demonstration flight, please call toll-free 800-835-2246 (in Kansas, 800-362-2421), and ask for Operator 600. Leave your name, address and phone number, and you'll be contacted by a Cessna Dealer to make arrangements.

GET THE COMPETITIVE EDGE.

FLY CESSNA
The World's Number 1 Business Airline



Please send me more information on the 1981 Cessna Skylanes.

Name _____

Business Name _____

Address _____

Phone # _____ City _____

County _____ State _____ Zip _____

Mail to: Cessna, Dept. 172D
Wichita, Kansas 67201

1981 RACE ROUTE



JUNE 26 — 29, 1981
2332.66 STATUTE MILES

1977 RACE ROUTE



1978 RACE ROUTE



1979 RACE ROUTE



1980 RACE ROUTE

