



**CORPUS CHRISTI, TEXAS  
TO  
COLUMBIA, SOUTH CAROLINA**

**JUNE 10 — 13, 1980 Official Program — \$3.50**

# LADIES AND GENTLEMEN, PROTECT YOUR ENGINES!



Everyday, you put your car to a driving test as grueling as an afternoon at Indy. Through stop and go traffic. Sustained speeds on the highway. Things that can really put the heat on your engine.

That's why you need a motor oil like Valvoline® . . . tough enough to take that kind of punishment. Valvoline, the

name more racers depend on than any other brand.

And while you're saving your engine, think about saving money, too. Change the oil yourself. It saves time, and it's easier than you might think.

Do-it-yourself with the motor oil that makes the difference. Valvoline. It's not just for winning races.

**Valvoline®**  
**IT'S NOT JUST FOR WINNING RACES,**  
**IT'S FOR SAVING MONEY, TOO.**

Valvoline Oil Company, Ashland, Ky.  Division of Ashland Oil, Inc.

*A Warm  
Welcome to*



## **1980 AIR RACE CLASSIC CONTESTANTS**



*from the Sparkling City by the Sea!*

# AIR RACE CLASSIC LTD.

P. O. BOX 187  
ADDISON, TEXAS 75001

EDITOR ..... PAULINE GLASSON  
ASSISTANT EDITOR ..... BARBARA LEWIS  
PUBLISHER ..... GOLDEN BANNER PRESS

## INDEX

	PAGE
CONTESTANTS (ALPHABETICAL LISTING) .....	3
DESIGNATED AIRPORTS ON THE ROUTE .....	17
OFFICIAL STARTER .....	15
AIR RACE CLASSIC DIRECTORS .....	4-5
RACE START .....	6-7
ENROUTE STOPS .....	8-13
RACE TERMINUS .....	14
CONTESTANTS .....	18-43
HANDICAPS .....	16-17
AWARDS AND LEG PRIZES .....	44-45
1977 AND 1978 AIR RACE CLASSIC WINNERS .....	46
1979 AIR RACE CLASSIC WINNERS .....	47

# CONTESTANTS

Classic No.	Name	Page	Classic No.	Name	Page
30	Anderson, Dottie .....	35	20	Mapelli, Velda King .....	29
42	Baer, Phyllis .....	41	28	Marley, Pam .....	34
44	Banks, Marian .....	42	43	Massey, Janice .....	42
17	Berson, Shirley .....	28	12	Mattiza, Virginia D. ....	25
17	Blech, Lorrie .....	28	45	McCormack, June .....	43
14	Blevins, Laura .....	26	40	McEwen, Pat .....	40
14	Blevins, Kay .....	26	36	McGuire, Emma .....	38
22	Brick, Kay .....	30	44	McKay, Sammy .....	42
27	Carmon, Lorraine .....	34	30	Miller, Marilyn .....	35
40	Copeland, Marilyn .....	40	36	Minter, Doris .....	38
27	Churchill, Jan .....	34	19	Morey, Caroline A. ....	29
33	Cull, Thelma .....	37	5	O'Kelley, Genie Rae .....	20
38	Dinan, Elizabeth .....	39	37	Orr, A. Lee .....	39
9	Donner, Joyce L. ....	24	6	Payton, Sophia M. ....	20
31	Dunne, Marguerite .....	36	15	Pearce, Martha V. ....	27
10	Etheridge, Dot .....	24	37	Penney, Dot .....	39
13	Futterman, Norma L. ....	26	7	Persons, Barbara .....	22
42	Gann, Dodie .....	41	35	Pfisterer, Debi .....	38
1	Glasson, Pauline .....	18	13	Pickering, Aileen .....	26
33	Goetz, Barbara .....	37	11	Pilaar, Carolyn .....	25
9	Graves, Joretta .....	24	25	Quenzler, Bonnie E. ....	33
31	Gregory, Audrey E. ....	36	26	Ringenberg, Margaret ....	33
23	Hall, Judy .....	32	21	Robertson, Merry .....	30
4	Hamilton, Mary Ann .....	19	28	Ross, Vicki .....	34
6	Harper, Sherry .....	20	2	Ruberg, Elva .....	18
24	Hinds, Alma .....	32	1	Scharringhausen, Shelby ...	18
21	Hipp, Anna Kate .....	30	5	Shaw, Diane .....	20
34	Hyde, Patricia .....	37	8	Sharp, Ali .....	22
7	Jablonski, Suzanne .....	22	35	Simler, Sue .....	38
18	Jayne, Marion .....	28	32	Slavin, Susan M. ....	36
16	Jetton, Pat .....	27	8	Stevenson, Berni .....	22
16	Johnson, Elinor .....	27	32	Tunney, Ann M. ....	36
3	Johnson, Valera G. ....	19	19	Truchinski, Lois Elaine ....	29
18	Keefer, Pat .....	28	12	Urban, Evelyn K. ....	25
26	Kelly, Diane D. ....	33	22	Van der Linden, Pam .....	30
29	Kropp, Evelyn .....	35	24	Wells, Joyce .....	32
3	Lee, Nelda .....	19	11	Wheeler, Gary .....	25
23	Lowry, Esther .....	32	34	Whyte, Edna Gardner .....	37
38	Lyon, Melinda M. ....	39	4	Wilson, Jean .....	19
43	Mallary, Pauline .....	42	25	Zillig, Shirley M. ....	33



# Air Race Classic Ltd.

## ARC Contestants:

The fourth annual AIR RACE CLASSIC presents each of you another opportunity to visit new places, meet new people, test your aeronautical skills and knowledge. You are part of a select group of women who have earned the privilege to fly.

YOU, the contestants, are the AIR RACE CLASSIC. As you survey this beautiful country of ours, be gracious and show gratitude to the hundreds along the route who have made it possible for you to compete in the 1980 CLASSIC.

Thank you for your participation and support.

God Bless and fly well,

*Velda King Mapelli*

## ARC Board of Directors:

Each race year presents new problems to be solved, but desire to maintain what we have strived for, gives each director the wisdom of decision. It is a privilege to be associated with such dedicated women.

Fond wishes for continued success in directing the ARC.

*Velda*



Velda King Mapelli  
President



**MARY PEARSON**  
First Vice President



**PAT JETTON**  
Second Vice President



**HELEN MCGEE**  
Secretary



**HELEN WILKE**  
Treasurer



**ESTER LOWRY**  
Director



**PAULINE GLASSON**  
Director

# D I R E C T O R S



ARDATH McCREERY



SHELBY SCHARRINGHAUSEN



PAT McNEIL



RITA CROWNOVER



DEBRA CARTER



DIANE WIEMAN



ELAINE NEEDHAM



SUE GRAY



MARION SCANIO



GLORIA WHITTINGTON



# CORPUS CHRISTI



## *The Sparkling City by the Sea*

Welcome to the 1980 Air Race Classic from your host city, Corpus Christi, the Sparkling City by the Sea. A fun place to visit and a fine place to live, we offer you an expanse of white sand beaches, the musical roar of the ocean and the laughter of a thousand gulls. Delight in the Sparkling City's abundant recreational offerings of sailing, surfing and fishing for the giants of the deep or the many smaller game fish available both to the expert angler and the casual fisherman just out your front door. If the water is not your thing, then our warm weather makes any outdoor sport, including golf and tennis, a year round event.

We are proud of the many beauties of our city and want to share them with you. We hope you will enjoy your visit with us as much as we are delighted to have you.

**Airport Manager: Bill Wilder**  
**Assistant Airport Manager: John Pinson**  
**Tower Chief: Bill Steward**  
**WX: Bill Hare**  
**FSS: Don Petty**  
**Supervisor: George McCarthy**



JACK FITE WX



LENA JACKSON



PEGGY TUCKER



BARBARA LEWIS



LOANNA HAYLEY



BETTY JO JOHNSTON



SHIRLEY PAGAN



FRANCES BROWN



JODY BAKER



LYNN MAHAFFEY

# ABILENE



Once noted for its cattle and agriculture, Abilene has grown steadily into a metropolitan center of approximately 136,000 people. As a center for a 22-county trade area, the city is noted for its wholesaling and distribution as well as retail services. The petroleum industry, as well as industrial manufacturing, have combined to afford Abilene steady growth and a stable economy. Dyess Air Force Base, with a payroll of approximately \$65,000,000, adds to the city's strong economic base.

The cultural aspects of the city are given popular recognition, with two universities and one college providing avenues for varied interests.



**GLENN MEEKS**  
Airport Manager



**RALPH READ (L), FSS Chief and BILL WALRAVEN (R), Rapcon Chief**

**DAVE HARMON**  
National Weather  
Service  
(Not pictured)



**SYLVIA ROBINZINE**  
FSS Specialist



(Left to right) **PATTI TALIAFERRO**,  
Timer; **MARJORIE ANDREWS**, Stop  
Chairman; **AMBER CREE**, Time Chair-  
man and **PEGGY HAWES**, Timer.



**JO ANN HAMIL**  
Hospitality



**EVELYN WOLTJEN**  
Hospitality

**NANCY ROBINSON**  
Hospitality  
(Not Pictured)



# FORT SMITH

Once remembered only as the home of the famed "Hanging Judge" Isaac Parker, Fort Smith has mushroomed into a prosperous community of nearly 70,000 people. Fort Smith offers visitors and residents alike a pleasant mix of excellent job opportunities, abundant recreational and historical attractions, and a climate comparable with other Sun Belt locations.

Fort Smith is in the center of a land of lakes along a strong, flowing river system. It is a city with a heart, rich in churches and schools, and is a place where rodeo and symphony can coexist. Fort Smith offers clean air and water and breathing room, and provides 50,000 clean industrial jobs. Its hospitals and clinics are second to none, and newcomers still find it hard to believe the city on the banks of the Arkansas river affords the quality of medical care it does.

Nestled in a valley at the southeast corner of town is the Fort Smith Municipal Airport. Home of the 188th Tactical Fighter Group, Arkansas Air National Guard, the airport's 8,000-foot runway is capable of serving most any aircraft in service today. Full ILS and complete services of the National Weather Service and FAA combined station/tower are available 24 hours a day.



**JIM GROVES**  
Airport Manager



**RAMONIA MITCHELL** (L), Chairman and **CHARLENE POE** (R), Co-Chairman.



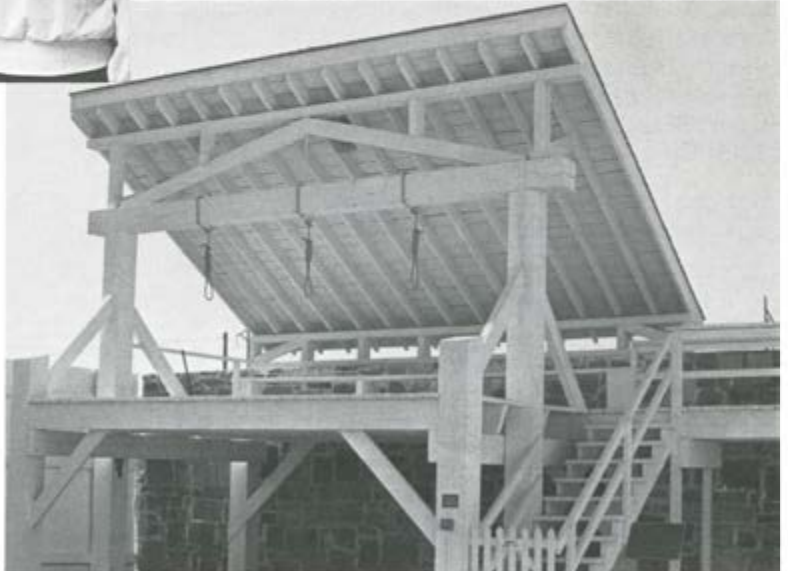
**MARGUERITE NIELSON**  
Chief Timer



**GAIL HALL**  
Lady Tower Controller



**CAMELIA SMITH** (L) and **BONNIE ANDERSON** (R), Timers



Ft. Smith tower . . . "what awaits the pilot after three missed approaches"!

# SALINA

*America's Heartland*



Salina, Kansas is a prosperous city of 41,000 located at the crossroads of the nation.

Ideally situated, Salina serves the rich farm lands of the greater Northwest Kansas area as a merchandising and financial center.

Banks and Savings & Loans with assets in the millions certify a prosperous economy.

Convenient downtown shopping is made possible by ample off-street parking lots. Several modern shopping centers and a mall provide easy access for residents and visitors alike.

Large mills operate day and night converting golden grain into flour. Farm products from the area are funneled through Salina.

Initially in an agricultural area, Salina has become an important distribution point and now is the home of 30 manufacturers of varied products.

Salina is rapidly establishing itself as the convention center for Kansas. The new multi-million dollar Bicentennial center for conventions, entertainment, sporting events and trade shows was opened last year by the Osmonds. A few days later Kenny Rogers packed the arena twice and played to more than 16,000 persons.

Salina, Kansas is truly the "Gateway to Opportunity".

Airport Manager: Paul Wall  
Tower Chief: Joe Pitts

FSS: Arnold Geist  
WX: Harold Lowman

ANN GREEN  
Stop Chairman

KENNETH N. WHITE  
Assistant



RONALD D. CARR  
Timer



MOYNE SILER  
Timer



CONNIE JOHNSON  
Timer

# WATERLOO

The Waterloo, Iowa municipal airport is pleased to be included once again as a stop for the Air Race Classic.

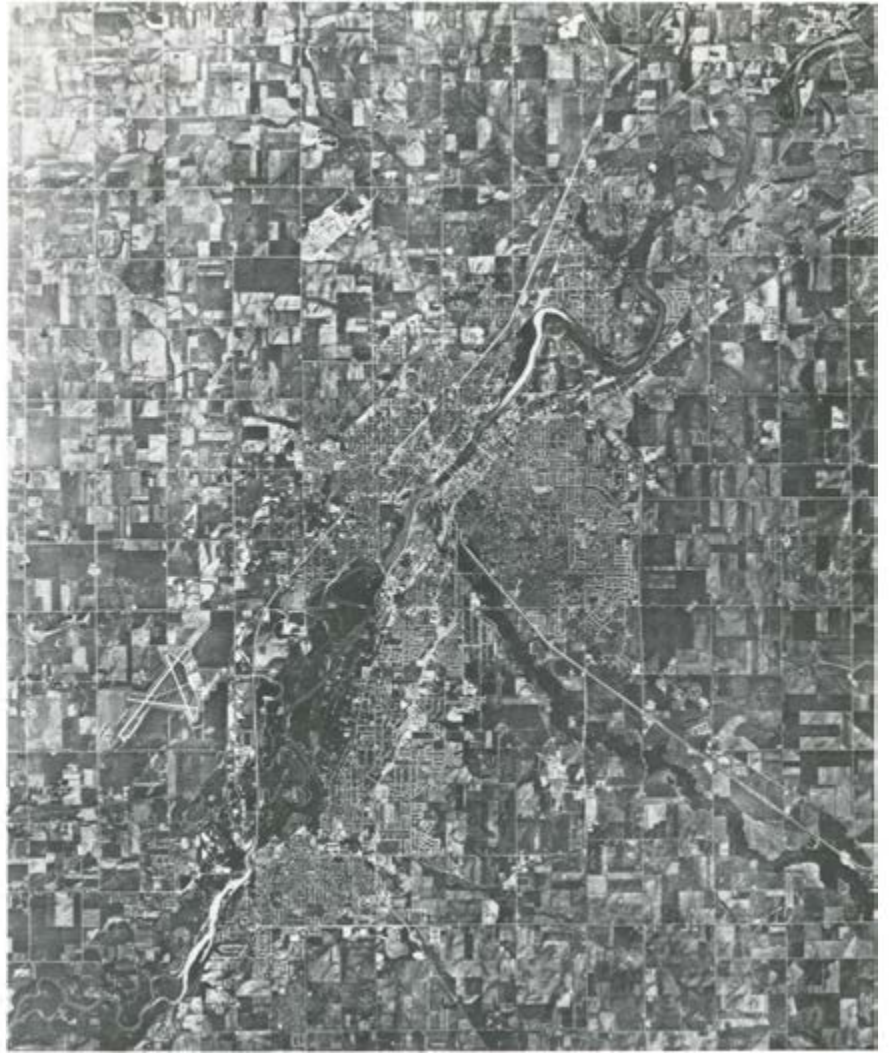
We look forward to having the participants visit our airport and utilize the full services available from two fixed base operators on the field.

Waterloo is located in the lush farm county of northeast Iowa and is the home of the John Deere Tractor works and the Rath Packing Company, famous for its Black Hawk hams and bacon, as well as many other industries.

This community was the home of John Livingston, world famous barnstorming and racing aviator. This airport is now renaming the field in recognition of his achievements and contributions to aviation and those of Water E. Betsworth, who was airport manager here for 25 years, the Livingston-Betsworth field.

We sincerely welcome this years Air Race Classic!

Airport Manager: Lloyd Turner  
Tower Chief: Lyle Grell  
WX: Ralph Robb



**RUTH SCHLEUSNER**  
Stop Chairman



**VERNA MAE PROCHASKA**  
Co-Chairman



**GERALDINE WALKER**  
Co-Chairman



**MARY LOU WRIGHT**  
Chief Timer



**ANNETTA HAACK**  
Timer



**BERNICE NORTON**  
Timer

# MARION



Southern Illinois is noted for the gracious, hospitable, and charm of her people; Williamson County Airport is pleased to be a part of this area. We welcome the Air Race Classic Ltd. to Southern Illinois.

Southern Illinois, or 'Little Egypt' as it is commonly known because of the area's great abundance of natural resources, has great charm. This area has great beauty, good climate, a beautiful natural forest, and a huge water supply with great rivers. There are large mineral deposits, an excellent comprehensive university; i.e., Southern Illinois University, and outstanding community colleges. A network of fine highways puts the residents within easy contact of all neighboring areas.

Because of the numerous advantages of the area, large and small industries alike have located in Southern Illinois. Southern Illinois is strategically located in the heart of the nation and offers the unspoiled beauty of the Southern Illinois Ozarks and Shawnee Hills. Shawnee National Forest stretches from river to river comprising more than 250,000 acres.

Welcome to Southern Illinois!



**CHARLES C. STOKER (L), Airport Manager and  
GAYLE W. FARLESS (R), Tower Chief**



**EVELYN BRAESE  
Chief Timer**



**BILL BRAESE  
Timer**



**CHRIS KURIANOWICZ  
Stop Chairman**

# HUNTINGTON

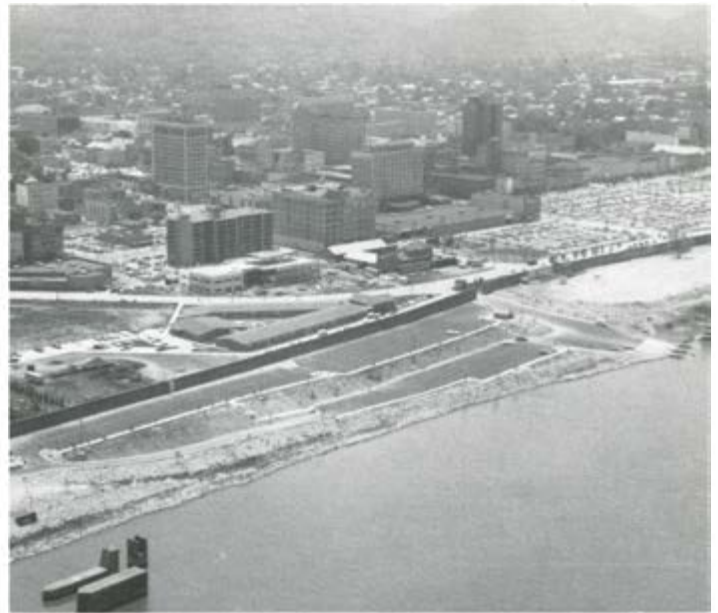
Going into the hills of Appalachia doesn't mean taking to corn pipes and mountain brew.

Not if you're headed for Huntington, West Virginia. The citizens here are proud of their mountain folk heritage. You will find cloggers and fiddlers. You will also find ballet and symphony.

Sitting on the Ohio River, across from Ohio's southern most tip and just a broad jump from eastern Kentucky, the city got its start when Collis P. Huntington decided to give his Chesapeake and Ohio Railroad a western terminus. Collis P. drew up a street plan, put his name on the charter and Huntington was on its way.

Known as the River Cities area: Huntington, West Virginia; Ashland, Kentucky; Ironton, Ohio is a metropolis of 300,000 people.

Access is easy and convenient, downtowns here are thriving. First class motel/hotel rooms are plentiful—however, with a Convention and Visitors Bureau bringing in 75,000 meeting delegates this year and good commercial travel as well as vacationers—reservations are recommended.



Free time goes fast here: there are concerts and events at the Huntington Civic Center, Marshall University with 11,000 students provides the community with sporting, cultural and educational opportunities, three (3) glass factories invite visitors to watch as molten globs of "raw" glass are hand blown or molded into beautiful delicate objects. Huntington Galleries is a modern museum complex, Paramount Arts Center entertains all ages—and if you're looking for an old fashioned paddle wheeler—the Camden Queen is docked and ready to show you the Great Ohio River.

Plus there are acres of parks with fishing, boating, swimming, and hot-air ballooning. Did we mention food—oh, yes—delicious from corn bread to chateaubriand.

Having the Air Race Classic contestants visiting us is a privilege.

Enjoy—good luck and come back again when we can visit longer.



**W. F. MAYS**  
Airport Manager



**BUD ROCHE**  
Chief National  
Weather Service



**CHAUNCEY DAMRON**  
Chief FSS



**JUDY BEAVER**  
Assistant to the Manager



**JACK DEPEU**  
Tower Chief



**JOAN MACE**  
Chief Timer



**BONNIE PLOWMAN**  
Co-Chairman

# COLUMBIA

Welcome to Columbia, the historic capital city of South Carolina! If you've never been with us before we hope you will join us and enjoy all the exciting things Columbia has to offer.

Long before L'Enfant's Washington took shape, another planned city was growing on the banks of the Congaree River; that early begin-



ning has grown into the Columbia that we know today. The Columbia metropolitan area now sprawls across Richland and Lexington Counties with over 384,000 people.

Lying in the rolling plains of Central South Carolina, Columbia has emerged as the commercial and governmental center for the state. Banking, commerce, industry, government and education have provided Columbia with one of the most diversified economies to be found anywhere in the Southeast.

We've got something to offer everyone. Whether your interests are in education, sports, the arts, history, an exciting vacation, a location for new business, or a great place to live, this is your kind of city.

Welcome to Columbia, The City for All Seasons.

Airport Manager: Robert H. Waddle  
Tower Chief: Phil Loftin  
WX: John Purvis

And thanks to the following: Mazelle Marshall, Bernatt Caldwell, Ruth Solley, Helen Tolhurst, Mary (Bunny) Foley, Ksena Stone and Ellie Rlorico.



**ANGELO WHEAT**  
Co-Chairman



**BETTY SCHMIDT**  
Terminus Chairman



**VIRGINIA DUNKELBARGER**  
Publicity Chairman



**PHYLLIS DALE**



**SYLVIA ROTH (L) and FRANCES MILLER (R),**  
Judges



**LOUISE SMITH**  
Judge



**MARGARET CLAYPOOL**  
Timer



**EMMY TURNER**  
Timer



**NANCY WRENN**  
Timer





**CHET DAVIDSON, Chief GADO, Wichita, draws Pauline Glasson's entry for Number One position in the race.**



**BRAD PEARSON, Official Starter**

## Air Race Classic 1980 Handicaps

MAKE/MODEL	HP	MPH		
<b>AERO COMMANDER</b>			Cardinal 177A (Fixed Pitch)	180 130
200 D	285	187	Cardinal 177	150 121
			Cutlass, 172 RG	180 147
<b>BEECHCRAFT</b>			Skyhawk R 172 XP (77-)	190 133
Duchess 76	360	177	Skyhawk 172N (77-)	160 124
Baron	570	219	Skyhawk II 172 (74-76)	150 119
Baron	520	211	*Skyhawk 172 (68-73)	150 116
Travel Air	360	185	Skyhawk 172 (65-67)	145 114
Bonanza S (65)	285	186	(*Eligible only with: Propeller Model	
Bonanza V-35 A & B	285	185	# 1 C 160/CTM 7553 Part #C	
Bonanza C-33A, E & F	285	183	161001-0305)	
Bonanza E-33C	285	189	<b>GRUMMAN AMERICAN</b>	
Bonanza G-33	225	179	Cougar	300 173
Bonanza 36, A-36	285	183	Tiger AA5B	180 143
Bonanza C33	225	169	Cheetah AA5A (76-)	150 135
Bonanza F-E 33	225	169	Traveler AA5A (75)	150 129
Sierra A, B-24R	200	143	Traveler AA5 (72-74)	150 121
Super III Musketeer A23/24	200	132		
Sundowner C-23	180	125	<b>MAULE</b>	
Musketeer A-23	165	122	M-4 210C	210 137
Musketeer 23	160	118	M-4 220C	220 139
Musketeer Sport A23-19, B-19	150	115	M-5 235C	235 145
<b>BELLANCA</b>			<b>MOONEY (Also Aerostar)</b>	
Bellanca 14-19 A-C	260	169	M 201J (77-)	200 179
(without nosewheel doors)			Ranger M20C	180 152
Super Viking 17-31			Statesman M20G	180 150
(Lycoming only)	290	171	Chapparral M20E	200 164
Super Viking 17-31			Executive M20F	200 160
(Lycoming only)	300	172		
Decathlon 8 KCAB	150	121	<b>PIPER</b>	
Citabria 7 KCAB	150	121	*Super Cub PA-18	150 109
Citabria 7 GCBC	150	120	Cherokee PA-28-140	150 121
Citabria 7 GCAA	150	120	Cherokee PA-28-150	150 121
(Citabrias must be 40 gal.)			Cherokee PA-28-160	160 123
(Bellanca Air Corp. only)			Cherokee PA-28-180	180 131
			Cherokee PA-28-235 (thru 77)	235 145
			(fixed pitch)	
			Cherokee PA-28-235 (thru 77)	235 146
			(Constant Speed)	
<b>CESSNA</b>			Cherokee PA-28-235 Dakota (78)	235 151
Cessna 310 R	570	219	Dakota, PA28-236 (1979-1980)	235 153
Cessna 310 F-L	520	210	Warrior PA-28-151	150 120
Skymaster 337 A-F	420	176	Warrior PA-28-161	160 127
Skymaster 337G	420	183	Warrior II PA-28-161 (78-)	160 128
Centurion 210 (69-)	285	182	Archer PA-28-181 (thru 76)	180 131
Centurion 210 (67-68) G-H	285	181	Archer PA-28-181 (77-)	180 137
Centurion 210 (66)	285	176	Arrow PA-28-180R	180 149
Centurion 210 (65)	285	177	Arrow PA-28-200R	200 152
Super Skylane P-206	285	152	Arrow II PA-28-200R	200 153
Super Skywagon U-206	285	152	Arrow III PA-28-200R	200 155
Skywagon 185 C-E	260	150	Comanche PA-24-260 & B	260 177
Skylane R-182 (78)	235	163	Comanche PA-24-260C	260 178
Skylane II 182 Q (77-)	230	149	Comanche PA-24-400 (65)	400 199
Skylane II 182 P (75-76)	230	148	Cherokee 6 PA-32-260	260 146
Skylane 182 P (72-74)	230	145	Cherokee 6 PA-32-260 (78-)	260 153
Skylane 182 H-N	230	145	Cherokee 6 PA-32-300	300 153
Cessna 180 K (77-)	230	149	Cherokee 6 PA-32-300 (78-)	300 161
Cessna 180 (75-76)	230	147	Lance PA-32-300R	300 174
Cessna 180 (65-74)	230	146	Lance II PA-32-300R (78)	300 178
Cardinal RG 177 (77-)	200	158	Aztec PA-23-250 (-76)	500 195
Cardinal RG 177 (74-76)	200	156	Aztec PA-23-250 (77-)	500 204
Cardinal RG 177 (72-73)	200	153	Twin Comanche PA-30, B & CR	320 187
Cardinal RG 177 (71-)	200	152	Twin Comanche PA-30 C	320 184
Cardinal 177 B (77-)	180	138	Twin Comanche PA-39	320 188
(Constant Speed Propeller)			Seneca PA-34	400 178
Cardinal II 177B (75-76)	180	135	Seminole PA-44-180 (79)	360 173
(Constant Speed Propeller)			(*Fuel quantity may be doubtful for this model)	
Cardinal 177B (70-74)	180	131		
(Constant Speed Propeller)				

(Handicaps continued)

**ROCKWELL COMMANDER**

Commander 114	260	171
Commander 112 (72-73)	200	146
Commander 112A (74-76)	200	148
Commander 112B (77-)	200	150



**FOOTNOTES:**

1. Long range tanks do not raise handicaps.
2. Removal of Wheel fairings does not lower handicaps.
3. New type Piper fairings — check with ARC headquarters for handicap if not listed above.

# STOPS

## DESIGNATED AIRPORTS ON THE ROUTE

## STATUTE MILES

International Airport, Corpus Christi, Texas	
Municipal Airport, Abilene, Texas	345.69
Municipal Airport, Fort Smith, Arkansas	365.13
Municipal Airport, Salina, Kansas	299.12
Municipal Airport, Waterloo, Iowa	377.89
Williamson County Airport, Marion, Illinois	376.51
Tri-State Airport, Huntington, West Virginia	353.28
Columbia Metropolitan Airport, Columbia, South Carolina	315.68

**Total Statute Miles 2,433.30**



We thank you . . . Pam Van der Linden, Ways and Means.  
 . . . All profits from sales of Snoopy and RON kits goes to Air Race Classic.



**PAULINE GLASSON**  
Pilot  
Corpus Christi, TX



**SHELBY SCHARRINGHAUSEN**  
Co-pilot  
Corpus Christi, TX



**ELVA RUBERG — Pilot**  
Greensboro, NC

**CLASSIC 1**

**Cessna Cardinal 177B 180 hp**

“Racing — airplane, that is, is challenging . . . demanding, exciting. I’ve always said that I wish that every person could enjoy at least one flight in an airplane” . . . Pauline flew 24 AWTARS . . . never winning but as close as second . . . several Angel Derbies . . . three Classics. Member of Aviation Advisory Board, Humane Society Board and Air Race Classic Board . . . has led the Tip of Texas 99s in painting 650 airmarkers . . . with more than 31,000 hours, Commercial, single land/sea, multi land, Flight Instructor Airplane/Instrument, Private Glider, advanced and instrument Ground Instructor. Husband Claude is an Aerial Photographer and retired Pipeline Patroller . . . and patience galore!

Shelby carries in her pocket a new license with 95 hours . . . mother of two teenage girls with an honest-to-goodness aviation minded husband. Shelby is wondering if this racing will resemble flight training in any way. Glad to have her in Tip of Texas 99s. Welcome, Shelby. Happy to have you.

**CLASSIC 2**

**Cessna 182P 230 hp**

Elva, with 3,400 hours, chooses to fly solo . . . Employed as an Instrument Flight Instructor and Charter Pilot, she has flown one Classic and six Angel Derbies . . . Husband Hugo, president of Western Electric International, is also a pilot . . . one of their three children is a pilot . . . races for fun . . . member of Carolina 99s. We are happy to have you!



**HARRIET BOOTH**  
Thank you!



*. . . sincere appreciation to —*

**JEPPESEN-SANDERSON**

Englewood, Colorado

For your continued support to

**AIR RACE CLASSIC**



NELDA LEE — Co-pilot  
St. Louis, MO

VALERIA JOHNSON (VAL) — Pilot  
St. Clair, MO



MARY ANN HAMILTON — Pilot  
Shawnee Mission, KA

JEAN WILSON — Co-Pilot  
Shawnee Mission, KA

### CLASSIC 3

Beech Bonanza V35B 285 hp

*Sponsored by:*  
**BELMONT INDUSTRIES**  
*Retail Finance*

Val: Happy to have you on your second Classic! . . . North Central Section 99s Vice-Governor . . . 6,000 hours Commercial, Flight Instructor/Airplanes, Instrument Rating and Commercial Helicopter . . . Nine AWTARS, three Angel Derbies, teacher, Navy Wave Gunnery Instructor Officer. Chief Pilot for Belmont Industries . . . Val is first woman Board Member of MO-STL Metropolitan Airport Authority. Husband Belmont also a pilot.

Nelda holds Commercial, single/multi land, Instrument Rating and Private Helicopter with 326 hours . . . Mechanical and structural Design Engineer and Flight Test Engineer with McDonnell Douglas Corporation (St. Louis Section of Outstanding Young Engineer, 1978) member of St. Louis 99s . . . Welcome to your second Classic, Nelda.

### CLASSIC 4

Piper 260C 260 hp

*Sponsored by:*  
**Ourselves**

Mary Ann is a two-time AWTAR winner, placing in several Angel derbies, has been awarded the Matrix Table Award and the Amelia Earhart Medal, past chairman Greater Kansas City 99s . . . 5,000 hours with Commercial, single/multi land, Instrument rating and Private Helicopter. Gordon, husband, and son are pilots and Mary Ann's staunchest supporters. "I race for the competition, seeing friends and the beautiful USA". Welcome, Mary Ann, to your third Classic.

Jean has flown in the Classic and three Angel Derbies. She has almost 1,800 hours . . . single/multi land . . . active in Kansas City Chapter 99s . . . and the Forest of Friendship . . . owner of Cessna Pilot Center. "I race for challenge, thrill, fun, beauty and personal satisfaction and wonderful friendships made possible. By her sharing her time and knowledge with me, Mary Ann has added a facet to my life that I'd have hated to miss."

# MATTHEWS *Electronics, Inc.*

1103 PAUL WILKINS RD. • INTERNATIONAL AIRPORT • SAN ANTONIO, TEXAS 78216

A/C 512 . . . 826-2811 . . . 826-7611 . . . 826-0307

CHAPARRAL HANGAR • INTERNATIONAL AIRPORT • CORPUS CHRISTI, TEXAS 78410



(512) 884-9858

*Specialist in*

AIRCRAFT ELECTRONICS  
AUTOPILOTS  
DISTANCE MEASURING EQUIPMENT  
RADAR  
TRANSPONDER  
COCKPIT RECORDERS  
CUSTOM INSTALLATIONS





**GENIE RAE O'KELLEY — Pilot**  
Knoxville, TN



**DIANE SHAW — Co-pilot**  
Wildwood, NJ



**SOPHIA PAYTON — Pilot**  
Clearwater, FL



**SHERRY HARPER — Co-pilot**  
Clearwater, FL

**CLASSIC 5**

**Piper Dakota PA 28-236 235 hp**

*Sponsored by:*  
**AVIATION UNLIMITED**  
*Piper Dealer, McGee Tyson Airport*  
**SHAWCREST MOBILE HOME PARK**  
*Wildwood, NJ*

With a Commercial, single/multi land, Flight Instructor Airplane/Instrument . . . 5,000 hours, Genie Rae is an Instructor for Aviation Unlimited in Knoxville. Member of the Tennessee 99s . . . she and her husband, chemist and pilot, have two children . . . Genie Rae is no newcomer to racing, having been in three AWTARS and two Classics.

DIANE, ARE YOU THE OWNER OF THAT NEW INSTRUMENT FLIGHT INSTRUCTOR RATING? This'll add to the Commercial, single/multi land, Instrument Rating . . . member of Golden State Chapter 99s . . . this lady works part-time as FAR pilot at the Admiral Air Service . . . has 1,250 hours . . . four AWTARS and two Classics to her credit. Again, a warm welcome to this team!

**CLASSIC 6**

**Cessna 182RG 235 hp**

Sophia won the Classic in 1978 . . . 9th in 1979 . . . placed in top ten in AWTAR, Angel Derby and many others . . . has 2,750 hours, Commercial, Instrument Rating, Commercial Glider . . . Glider exhibition in Air Show . . . deep sea fishing, boating in their Sunfish with husband Neal, who is Captain on US Airlines and has shared the joy of Sophia's aviation career . . . Sun-coast 99s. We're happy to have you!

Late arrival . . . Flight Instructor Clearwater Executive Aircraft, Clearwater. First race . . . 740 hours . . . Commercial, single land/sea, multi land, Instructor/Airplane, Instrument Rating. This is her first race. Welcome, Sherry.



*"Isn't that funny? The FBO thought we were sisters —"*



*"See, Mom! That's where you went off course —"*

*"Congratulations to*

**Air Race Classic**

*for its continuing promotion of  
General Aviation and  
Women Pilots."*

**Palomar Ninety-Nines**

## HARTZELL, McCAULEY, AND SENSENICH SPECIALISTS

*Propeller Distributors for Hartzell & Sensenich  
We Stock for All Popular Models*



### Extensive Exchange Program



We Export Worldwide

Facility at Jefferson County Airport for Prompt Removal, Installation  
Open Saturday 10 a.m. — 4 p.m.; Daily Until 8 p.m.  
Airport Delivery and Pickup

 **AERO PROPELLER** 

W. 120th Ave. & Kipling St. — Jefferson County Airport  
Broomfield, Colorado 80020 TELEX 454326 SAMARAS DVR Phone (303) 469-1749  
Sue Houston, Owner/Manager Out-of-State (800) 525-8756

# Full-Support Aircraft Service

## With a WINNER

# AERO ASSOCIATES

Hangar B4A  
Jeffco Airport • Broomfield, Colo. 80020  
303-466-1961





**BARBARA PERSONS** — Co-pilot Tarzana, CA     **SUZANNE JABLONSKI** — Pilot Woodland Hills, CA



**ALI SHARP** — Pilot Grants Pass, OR



**BERNI STEVENSON** — Co-pilot North Hollywood, CA

### CLASSIC 7

Piper Dakota 235 hp

You know how the plumbing goes haywire when company's coming? Now this would be a handy person to have visit you! Sue works with husband in their business, often as his assistant, laying sewer and water pipes as well as setting sinks 'n toilets. She's an active member of the San Fernando Valley 99s . . . has 400 hours . . . brand new Instrument Rating . . . first place in Baja, California race and placing well in other races.

Barbara has participated in many Air races . . . has 150 hours . . . member of San Fernando Valley 99s . . . currently Chairman of annual Poker Flight. As Production Accountant of Orion Pictures, Inc., she travels extensively and occasionally abroad. A certified scuba diver, married and has three children.

### CLASSIC 8

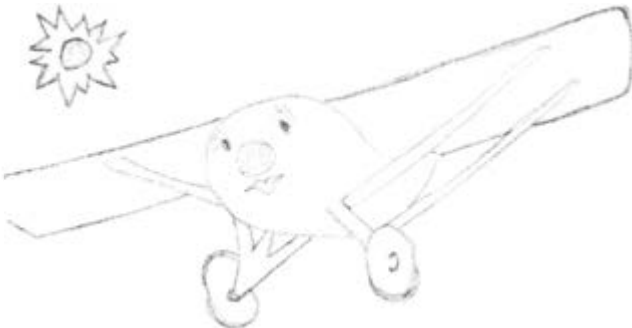
Cessna Cardinal 177B 180 hp

*Sponsored by:*  
**SHARP LANTERN COMPANY MANUFACTURING ANDROSIA**

Congratulations, Ali, on the brand new Airline Transport. Believe it or not, Ali took her first flight lesson on her 55th birthday. Today she has 1,700 hours in her log. A hard-working, energetic member of Willamette Valley 99s . . . a pianist, enjoys all outdoor sports including the sailboat that she and her husband own. Always expect you in our classic, Ali.

Berni carries that ATP — single land/sea, multi land, and Commercial Glider with 4,000 + hours. She has flown many Angel Derbies — having won in '73, many AWTARS and taken top three places in closed course pylon races. Berni is a member of Los Angeles 99s and employed as an Industrial Real Estate Manager. Her husband, James, is a corporate pilot — also their two children are pilots.

## FLYING SOUTH?



Plan to spend the night at the Holiday Inn of Thomasville, Georgia.

Just call Unicom 122.8

We will be waiting at the airport.



**They're Coming!**



**BEST WISHES TO BERNI & ALI**

*wearing*

*Androsia*

**100% Cotton Fabrics**

**Batiked in the Bahamas**

**ROSIE & DICK BIRCH**



**JOYCE DONNER — Co-pilot**  
Oshkosh, WI

**JORETTA GRAVES — Pilot**  
Stevens Point, WI

**CLASSIC 9**

**Piper Lance II 300 hp**

*Sponsored by:*  
**AIRTRONICS INC.**  
Clintonville, WI

**AVIONICS STEVENS POINT PILOT ASSN.**  
Stevens Point, WI

This Physical Therapist, turned pilot, accumulated 600 hours with Commercial, single/multi land and Flight Instructor . . . Bet ARC's terminus in Milwaukee last year prompted Joretta's 99 membership and flying this year's Classic! Husband Lowell is an oral surgeon and pilot.

Joyce is a new student in college with flying as a hobby and has 215 hours. Treasurer of Wisconsin 99s with time to Chairman Women's Activities FAA Oshkosh and Chairman Women's activities World Acrobatics 1980. Husband Raymond and daughter are pilots. Good luck!



**DOT ETHERIDGE — Pilot**  
Greenville, MS

**CLASSIC 10**

**Beech Bonanza V-35 285 hp**

*Sponsored by:*  
**AIR COMMAND**  
Full Service FBO  
Greenville Intl. Airport

With 8,500 hours, Dot is owner/operator of Beech Aero Center . . . with FAA Examiner, Commercial, single/multi land, Flight Instructor Airplanes/Instrument and basic Ground Instructor . . . flies a Pitt Special in Aerobatic Competition . . . member of Mississippi 99s . . . Dot has racked up second and 7th in the Classics and fourth in AWTAR.

**You're always  
welcome in . . .**

**TUOLUMNE COUNTY**

Scenic vacationland in the heart of California's  
historic gold country

SERVED BY

**The Daily Union Democrat**  
LEADING NEWSPAPER OF THE MOTHER LODGE

SINCE 1854





CAROLYN PILAAR — Pilot  
Greenville, SC

GARY A. WHEELER — Co-pilot  
Greenville, SC



VIRGINIA MATTIZA — Pilot  
Austin, TX



EVELYN URBAN — Co-Pilot  
Portland, OR

### CLASSIC 11

Bellanca Decathlon 8KCAB 150 hp

Carolyn is Chairman of Foothills 99s . . . owns a Flight School . . . has 9,000 hours with Airline transport, single land/sea, multi land, Flight Instructor Airplanes/Instrument, Commercial Helicopter and Glider and basic, advanced, instrument Ground Instructors and . . . Gosh, cast your eyes on the Airframe and Powerplant License . . . Carolyn has flown AWTARS, Angel Derbies and all of our Classics . . . Great racer!

Gary has 400 hours, is Instrument rated, single land/sea . . . Got that Commercial yet, Gary? She's a Registered Nurse, employed as a Senior Nurse on a general surgical area . . . is Charter Chapter secretary of Foothills 99s . . . has flown several AWTARS and Angel Derbies. Welcome aboard, Gary.

### CLASSIC 12

Mooney M20J 200 hp

Virginia is a diligent worker in the Austin 99s . . . former teacher in Tokyo, Japan; Ulsan, Korea and Austin . . . with 250 hours, Instrument Rating and basic Ground Instructor, Co-pilot Evelyn is responsible for Virginia learning to fly.

Evelyn's very tolerant husband, Tony, a pilot, encourages this team as he has in her acquiring 523 hours and Instrument Rating. Teamwork in their flying as well as their TV and appliance business. Welcome aboard, Virginia and Evelyn, for your very first Classic!

## The Pilot Shop

ADDISON AIRPORT  
214-661-2825  
DALLAS



**NORMA FUTTERMAN** — Pilot  
Beverly Hills, CA

**AILEEN PICKERING** — Co-pilot  
Sherman Oaks, CA



**LAURA BLEVINS** — Pilot  
Norcross, GA



**KAY BLEVINS** — Co-pilot  
Mt. Arlington, NJ

### CLASSIC 13

**Beechcraft Bonanza A36 285 hp**

Norma has 2,300 hours, Commercial, single land/sea, multi land with Instrument Rating, Commercial Glider and basic Ground Instructor. Norma has flown all Classics, several Angel Derbies and AWTARS, is past chairman of Los Angeles 99s. "Greatest pleasure in racing is the camaraderie among people involved." Husband Charles and son are pilots. We think you're special, too, Norma.

Aileen has 1,600 hours, Commercial, single land/sea. Five AWTARS, two Classics, present Chairman of Los Angeles 99s. Aileen is a realtor, but main love is flying and Ninety-Nines. Great team!



Women pilots! Not bad huh?

### CLASSIC 14

**Cessna 172M 150 hp**

*Sponsored by:  
BLUEGRASS FLYING ANGELS  
Mt. Arlington, NJ  
(Promotion of Women in Aviation)*

With her 1,000 hours, Laura follows an aviation family . . . received A&P license with aviation degree from Western Michigan University. She uses her Commercial, single/multi land, Flight Instructor, Airplane/Instrument at Avia Corporation, Peachtree-DeKalb, Atlanta. Several trophies in NIFA Competition, one AWTAR, one Classic, one Angel and five years with Civil Air Patrol. Laura is really "in the know" bowing to a great career for you, Laura.

With Kay's 750 hours, Commercial, Instrument Rating, she and Laura comprise another of our proud Mother-Daughter teams! Kay has much varied experience in aviation. At present, is Marketing Administrator for Edo-Aire and working on C.F.I. Has flown one AWTAR, two Angels and two Classics . . . member Palisades 99s. We, too, think racing is great, Kay . . . And meeting people like this team!



Huntington has the female population in their tower awaiting the Air Race Classic.

A GREAT BIG THANK YOU —

**CIRCUS**  
**CIRCUS**

Las Vegas  
Nevada



**MARTIE PEARCE** — Pilot  
Tempe, AZ



**PAT JETTON** — Pilot  
Carrollton, TX

**ELINOR JOHNSON** — Co-pilot  
Dallas, TX

**CLASSIC 15**

Cessna 172N 160 hp

*Sponsored by:*  
**CHANDLER FLYERS, FBO**  
Sky Harbor Airport  
Phoenix, AZ

Martha has 3,200 hours and will fly solo. A part-time Flight/Ground Instructor, she holds Commercial, single land/sea, multi land, Flight Instructor Airplane/Instrument, Flight Instructor Glider with advanced and instrument Ground Instructor. Martha is a retired Navy nurse . . . a member of Phoenix 99s . . . like that soaring hobby, Martha . . . busy, busy, busy.

**CLASSIC 16**

Beechcraft Bonanza C33A 285 hp

*Sponsored by:*  
**THE PILOT SHOP**  
Addison Airport, Addison, TX  
(pilot supplies and gifts)

Pat has 3,500 hours, Commercial, single/multi land, Flight Instructor Airplanes/Instrument . . . She owns Airport Flying School . . . is newest Classic Board Member . . . belongs to Dallas Redbird 99s . . . Pat has flown all Classics, many AWTARS and Angel Derbies. Let's try to beat this team!

Elinor's log says 1,500 hours, Commercial, single/multi land, Flight Instructor Airplane/Instrument. She's a draftsman for Superior Design. Elinor and pilot husband enjoy touring Mayan Indian and other archeological jaunts . . . member of Dallas Redbird 99s.

Elinor and Pat: No help from your pilot sons!



**NORMA DRAPER (L)** and **HELEN MCGEE**, Scorers



**SHIRLEY BERSON** — Co-pilot  
Beverly Hills, CA

**LORRIE BLECH** — Pilot  
Los Angeles, CA

**CLASSIC 17**

**Grumman-American AA5B 180 hp**

*Sponsored by:*  
**SAWYER FLIGHT CENTER, FBO**  
Chino, CA

Lorrie, with 3,400 hours, uses her Flight Instructor, Commercial, single land/sea, multi land in her work at California Aviation. She has memories of two Classics, the Baja and several other races. This team is heading for No. 1 come June 10th!

Shirley loves to race, has 325 hours, owns and operates Sawyer Flight Center, Chino, CA. She's a member of the San Fernando 99s, has two children and husband Marvin is a pilot. Shirley has teamed with Lorrie for two Classics . . . flown Angel Derby, several others . . . good luck!



**PATRICIA KEEFER** — Co-pilot  
Palatine, IL

**MARION JAYNE** — Pilot  
Palatine, IL

**CLASSIC 18**

**Piper PA-39 Twin Comanche 320 hp**

*Sponsored by:*  
**AIR AURORA**  
Aurora Airport  
Sugar Grove, IL  
**WHIRLWIND PROPELLERS**  
Gurnee, IL  
**CHICAGO AVIONICS**  
Midway Airport  
Chicago

Marion, with 3,200 hours, Airline Transport, single/multi land Flight Instructor/Airplane, has won two of the three Classics. Won Angel Derby three times and flew several AWTARS. There's more! Marion is a business entrepreneur, professional racer, professional horsewoman and recognized judge of the American Horse Shows Association . . . Past Board member of Air Race Classic . . . Member Chicago Area 99s.

Patricia, with 200 hours, single/multi land, sells large computers for IBM. She shares flying with husband Kenneth (whom Marion taught to fly) and shares racing with sister Nancy.

A great mother-daughter team.

# Protect avionics from costly heat damage

The **THERMACON HEAT SCREEN** so effectively protects avionics and interiors from costly heat damage that Cessna Citation and Learjet offer it as optional equipment.

Fabricated from our exclusive MPA LAMINATE, the Thermocon is simply the best. Write or phone us for further information or ordering. We produce over 55 different models to fit virtually the entire U.S. Fleet.

Manufactured and distributed by

**Morgan Stanford Aviation**  
1805-J Second Street, Berkeley, CA 94710  
(415) 841-6642



**BETTY WHARTON**, Inspection Chairman  
Thank you, Betty — we appreciate you.



**LOIS TRUCHINSKI — Pilot**  
Wisconsin Rapids, WI

**CAROLINE MOREY — Co-pilot**  
Middleton, WI



**VELDA KING MAPELLI — Pilot**  
Las Vegas, NV



**CLASSIC 19**

Cessna 182 RG 235 hp

*Sponsored by:*  
**MOREY AIRPLANE CO., FBO**  
Middleton, WI

A member of the Wisconsin Chapter 99s, Lois has 1,250 hours with Commercial, single multi/land and Instrument Rating . . . She is a Run Assembly Clerk (whatever that is) for Nekoosa Papers . . . enjoys flying with pilot husband Larry. They have four children, of which one is a pilot. Lois has flown two Angel Derbies, one Classic . . . in her spare time loves bowling and roller skating. Thanks for the key ring date finder. It may be "Messenger of the Mind" but it certainly over-worked mine!

Caroline's 275 hours include participation in one Classic, Illi-Nines, WOW Derby, Angel Derby, one AWTAR and she is a member of the Wisconsin 99s. She is a Registered Nurse. Her husband, Field, is an airport manager and her two children are also pilots. Want to improve that 1979 fifth place this year?

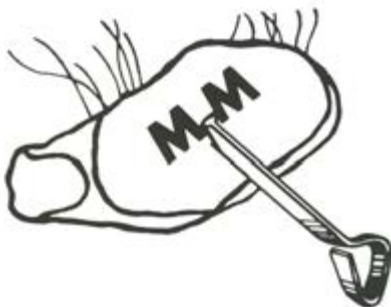
**CLASSIC 20**

Piper PA 24-260B 260 hp

*Sponsored by:*  
**MAPELLI MEAT COMPANY (Wholesale)**  
Las Vegas, NV

RACING IS THE EPITOME OF INTELLECTUAL CHALLENGE! Velda is President of Air Race Classic . . . member of Las Vegas 99s . . . partner with pilot husband Gene in business . . . has time for snow and water skiing, tennis, golf . . . SELDOM misses an air race, usually doing well . . . (ESPECIALLY when wearing specs to change frequencies) . . . often races with pilot daughter, Stephanie . . . Velda has 2,200+ hours, Commercial, Instrument Rating.

We thank you, Velda, for your part in making the Classic possible.



**BRAND OF DISTINCTION**

"Good Luck to our Corporate Pilot  
and favorite air racer."  
Velda King Mapelli

**DISTRIBUTORS OF:**  
**MONFORT OF COLORADO**  
BEEF AND LAMB  
PRODUCTS

**MAPELLI MEAT COMPANY, INC.**  
3111 S. Valley View Blvd.  
Las Vegas, Nevada 89102  
(702) 876-9000



**ANNA KATE HIPP** — Pilot  
Greenville, SC

**MERRY ROBERTSON** — Co-pilot  
Greenville, SC



**KAY BRICK** — Co-pilot  
Fallbrook, CA

**PAM VAN DER LINDEN** — Pilot  
Fallbrook, CA

**CLASSIC 21**

**Beechcraft C24R 200 hp**

*Sponsored by: STEVENS BEECHCRAFT, INC.*

Anna Kate has 1,120 hours, Commercial and Instrument rating, a housewife and member of newly formed Foothills Chapter 99s. The three children and pilot, insurance executive husband are rooting for this team! They failed to finish the Angel in 1977, finished in lower half of Classic in 1978 and being Tail End Charlie in 1979. NOWHERE TO GO BUT UP!! And up, up to number 1 it is! All the best!

This energetic lady has her Instrument Rating . . . 600 hours . . . is a full-time mother . . . part-time court reporter . . . Merry's managed two Angel Derbies, two Classics . . . member of Foothills 99s . . . was on right side of Winner in Rose Rallye . . . pilot, lawyer husband and four children will be waiting for ringing of phone each day with . . . happy news.

**CLASSIC 22**

**Bellanca Viking 17-31A 300 hp**

Pam has 2,279 hours . . . Commercial, multi land, Instrument, eight AWTARS, three Classics . . . with husband Victor owns Fallbrook Real Estate and boasts of three children (three pilots), nine grandchildren and two greats! Member Palomar 99s, Baja Bush Pilots, National Real Estate Flyers . . . Plays tennis, snorkles, knits! Good grief!

Welcome Kay! A past President of International Ninety-Nines . . . And Big Boss of AWTAR from 1961 thru 1974 . . . much appreciated . . . Kay flew many races including six AWTARS . . . She has Commercial, single/multi land, Instrument, Flight Instructor Airplane . . . 6,000 hours. A former WASP, she has been awarded many honors as attested in Who's Who of American Women. This new owner of a lime ranch is an inspiration to many. Great to have this team.

**GOOD LUCK MERRY ROBERTSON AND ANNA KATE HIPP**



**Stevens Beechcraft, Inc.**

**WE SELL, WE SERVICE, WE CHARTER**

**GREENVILLE, S. C.**  
Greenville-Spartanburg Jetport  
803/879-6105

**NASHVILLE, TENN.**  
Metropolitan Airport  
615/361-7776

**LOUISVILLE, KY.**  
Bowman Field  
502/451-2800

**KNOXVILLE, TENN.**  
Downtown Island Airport  
615/577-4461



# Be there. Behind the wheel of a classic.

Business takes place wherever there's a decision to be made, wherever currency changes hands. And that can be in some pretty out-of-the-way places. But no matter where or when business happens there's often no substitute for a personal, face-to-face encounter.

To do that you have to be there.

For many companies and individuals, owning an airplane is the most effective way to get things done.

Is a company airplane right for you?

One face-to-face encounter with the classic Beechcraft Bonanza will convince you.

Because sitting behind the wheel of a legendary airplane like the Bonanza is as close to experiencing perfection as you're likely to get. After 32 years of continuous refinement, the Bonanza is still the airplane of the future. It's still the one to beat.

And with a top speed of 209 mph, a quietly elegant cabin and renowned Beechcraft quality, beating it is going to be hard to do.

Isn't it about time you got behind the controls of the world's most celebrated airplane? Fly a Beechcraft Bonanza, today. And be there.

## Send for your free aviation kit.

It's packed with valuable information, including a Capital Re-

covery Guide to help you determine the remarkably low net capital cost of acquiring a Beechcraft Bonanza.



Simply write on your company letterhead to: Beech Aircraft Corporation, Dept. J-27V, Wichita, Kansas 67201. And please mention if you're already a pilot, an aircraft owner, and what type of aircraft you fly.

Member of General Aviation Manufacturers Association





**ESTHER LOWRY** — Pilot  
Thomasville, GA



**JUDY HALL** — Co-pilot  
Lizella, GA



**ALMA HINDS** — Pilot  
Redding, CA

**JOYCE WELLS** — Co-pilot  
Larkspur, CA

### CLASSIC 23

Maule M5-235C 235 hp

*Sponsored by:*  
**MAULE AIRCRAFT**

A member of the Deep South 99s, Holiday Innkeeper, Arts and Crafts specialist and Director on Air Race Classic Board, Esther has accumulated 4,400+ hours with Commercial, Flight Instructor/Airplanes and Instrument Rating. Husband Carl is satisfied that Esther is the only pilot in the family. If there's a race, Esther will be there . . . having flown many AWTARS and winning Angel Derby in 1975. Thanks, Esther, for your part in Classic's operation.

How, oh how, Judy, can you handle the governorship of Southeast Section 99s, a full-time church office manager, help us with Air Race Classic, acquire 1,150 hours with Commercial, single engine land/sea and Instrument Rating, mother of three . . . then FLY the race because husband Jerry wishes you to?

## AIR RACE CLASSIC

Flying the ARC is a cooperative effort between pilot and co-pilot. Each has unique capabilities and each is assigned specific duties. This sharing of tasks and responsibilities produces the total effort needed to make a winning combination.



"Rub with the grain!"



"A speck where?"

### CLASSIC 24

Cessna Skylane RG 235 hp

Sixteen thousand hours, Commercial single/multi land, Instrument . . . numerous AWTARS and two Classics . . . licensed in 1939 . . . Alma has a ready made cheering section, three children and nine grandchildren.

Joyce has 1,450 hours, Commercial, single/land, Instrument . . . she's a school nurse, member of Bay City 99s, plus many civic groups. Five AWTARS and all Classics . . . Multi-talented lady . . . "I race to improve my knowledge of geography, aviation skills and an appreciation of people living in areas outside my own."

Welcome to a great team!



"Of course we'll still be pals after the race . . ."



BONNIE QUENZLER — Co-pilot  
Merritt Island, FL

SHIRLEY ZILLIG — Pilot  
Fort Lauderdale, FL



DIANE KELLY — Co-pilot  
Ft. Wayne, IN

MARGARET RINGENBERG — Pilot  
Grabill, IN

### CLASSIC 25

Piper Cherokee PA 28 235 hp

*Sponsored by:  
LILLY PULITZER, INC.  
Palm Beach, FL  
(resort apparel)*

A corporate Executive in Industrial Manufacturing, Jiffy-Tite Co., Shirley and her husband have four children . . . one a "legitimate" pilot and two "potentials" . . . great spirit! . . . member Gulfstream 99s with 509 hours and Instrument Rating . . . has flown several Angels and others.

Bonnie has 1,415 hours, Commercial single land/sea, multi land, Flight Instructor, Airplane/Instrument, Ground Instructor, basic, advanced, instrument. She's been a Classic Terminus Judge, Southeast Treasurer 99s, housewife, air taxi pilot . . . ophthalmologist husband Laird is also a pilot . . . Three children, many interests . . . first Classic, three Angels, two AWTARS . . . Florida Spaceport 99s . . . High in the sky and high in fashions . . . good luck to this mother-daughter team.



"Of course everybody climbs on top to clean it!"



"Pull that plane . . ."

### CLASSIC 26

Piper PA 32R Lance 300 hp

Margaret has 25,000 hours, Commercial, single/multi land, Flight Instructor Airplane/Instrument . . . Indiana 99s . . . WASP . . . Silver Wings. Two children, three grandchildren . . . daughter Marsha is a pilot . . . Margaret, a real pro, has made many, many races . . . several AWTARS, three Classics, taking 2nd place in 1978 . . . husband Morris is in Banking and Real Estate.

A brand spanking new pilot . . . taught by Margaret . . . is a Registered Nurse . . . Nursing Home Administrator . . . Husband James is a pilot.

Welcome, to your first race, Diane.



"Be sure my side's as clean as yours."



". . . and lift that luggage."



LORRAINE P. CARMON — Co-pilot  
Pennsville, NJ

JAN CHURCHILL, Pilot  
Chesapeake City, MD

**CLASSIC 27**

Cessna 182P 230 hp

*Sponsored by:*  
**SUMMIT AVIATION**  
Middletown, Delaware  
**DAWN AERONAUTICS**  
New Castle, Delaware

Dr. Edwin Churchill, veterinarian, approves of Jan's 2,400 hours in the air — as Line Pilot, Charter Department, Summitt Aviation . . . with Airline Transport, single/multi land . . . so long as she devotes some time as a licensed AKC Judge for dog shows. There's still time for Delaware 99s and Advisory Board of Wilmington College. Has flown two AWTARS . . . Hope you'll like us at Classic!

Lorraine is part-time receptionist at Dawn Aeronautics Flight School and plenty excited at flying her first race . . . has 150 hours but bet she'll be strutting Commercial and Instrument by take-off date. Husband and two sons will be waiting and listening . . . member of Central Delaware Pilot Association . . . Delaware 99s and Civil Air Patrol.



"Whadda ya mean a short cut?"



"I said short cut — not cut out!"



VICKI ROSS — Pilot  
Phoenix, AZ



PAM MARLEY — Co-pilot  
Phoenix, AZ

**CLASSIC 28**

Cessna 182 230 hp

*Sponsored by:*  
**NOMAD FILMS**  
(James Bruce), Film Making  
**REGENCY OIL**  
(O. Burr Ross), Oil Drilling  
**DALE HERSH**  
First Officer, Braniff Airlines  
**JACK HERSH**  
Dorsey Insurance, Cleveland, OH  
**BOB WHITMAN**  
Caldwell Banker Real Estate  
Alamo, CA  
**BUD MARLEY'S RODEO WINNINGS**  
(Rodeo Team Roper)

This team belongs with Phoenix 99s . . . Vicki chose social work . . . Child Protective Service, state of Arizona . . . over being a Flight Instructor. Pilot doctor husband Burr approves. Vicki, with her Commercial and Instrument Rating, uses racing to see the country and renew friendships as she has in the AWTARS and Kachina Dolls.

Ouch! Another aerobatic pilot . . . in four contests Pam whammed out first and third place . . . this after switching from teaching school! . . . Can't use the 1,300 hours . . . Commercial, single/multi land, Instrument Rating and Flight Instructor/Airplane in the classroom but can over the family ranch. Husband a pilot too!



"That's O.K. — I cut out mine too."



**EVELYN KROPP — Pilot**  
Norwich, CT



**DOTTIE ANDERSON — Pilot**  
Bluffton, OH

**MARILYNN MILLER — Co-pilot**  
Reynoldsburg, OH

**CLASSIC 29**

Piper PA28R-200 200 hp

Evelyn races because how else can one meet wonderful people, see the country, encounter such competition, great experience! Building 2,500 hours with Airline Transport, single land/sea, multi land, Flight Instructor Airplane/Instrument, basic, advanced, instruments Ground Ratings. Evelyn's doctor husband Peter and two children will be listening for a call each night as they have when Evelyn flew AWTAR and Angel Derby races.

We are so proud to have a Connecticut 99 with us.

**CLASSIC 30**

Piper PA-28-181 180 hp

*Sponsored by:*  
**BLUFFTON FLYING SERVICE**  
*Fixed Base Operator*

Dottie built and flies her own Pitts . . . If still restless, she settles down to being an amateur radio operator (W80VV) . . . Dottie has acquired the 26,500 + hours as Flight Instructor Airplane/Instrument, FAA Examiner, Commercial, single/multi land, basic and advanced Ground Instructor . . . all this and Assistant Airport Manager and All Ohio 99 member!

An Equipment Specialist with the United States Government, Department of Defense, Marilyn has 800 hours . . . Commercial, single/multi land/sea, Instrument Rating, Commercial Glider . . . flown several Angel Derbies . . . currently north Central Section Governor 99s. Husband Robert is retired from business but not as a pilot.

Welcome to our Race, Marilyn and Dottie!



"Excuse me a moment and let me sleep on it!"



"What do you mean — there's five more?"



**KATHY LONG and HELEN WILKE will fly chase plane.**



**MARGE DUNNE** — Pilot  
Hartland, WI

**AUDREY GREGORY** — Co-pilot  
Delafield, WI

**CLASSIC 31**

**Cessna 172L 150 hp**

We have an 8,000 hour pilot who holds a Real Estate Broker License, as well as Airline transport, single land/sea, multi land and uses her Flight Instructor Airplane/Instrument . . . advanced and instrument Ground Instructor on her job at Waukesha County Technical Institute. After flying the Classic last year, retired pilot husband says "No worry!"

You bet, Aud, you will get the racing bug and we're glad to have you as a brand new pilot with those 170 hours. You can daydream while selling real estate . . . am sure your Treasury Agent husband is happy you encouraged him to finish his license.



**ANN TUNNEY** — Pilot  
Glenn Ellen, CA



**SUE SLAVIN** — Co-pilot  
Carpinteria, CA

**CLASSIC 32**

**Beechcraft Bonanza 36 285 hp**

*Sponsored by:  
Understanding and Generous Husbands*

Third Classic for Ann and, with approval of pilot husband Gene, who is District Attorney of Sonora County . . . 1,317 hours with Commercial and Instrument . . . four children . . . "animals a bunch" . . . the love of outdoors . . . happiness shows . . . And thanks for much you have done for Air Race Classic.

Welcome again, Sue . . . good to see the increase to 98 hours. Sue's occupation: Special Education Teacher for Emotionally Disturbed and Learning Handicapped Children . . . how great. Husband Patrick is a painter . . . a super sister team.





THELMA CULL — Co-pilot  
Fair Oaks, CA

BARBARA GOETZ — Pilot  
Fair Oaks, CA

**CLASSIC 33**

Piper PA 24-260 260 hp

*Sponsored by:*  
GOETZ EQUIPMENT COMPANY  
Sacramento, CA

*(Massey Ferguson Industrial Equipment Dealer)*

Barbara has built over 1,500 hours by corporate flying, six AWTARS, three Angel Derbies, three Classics and many smaller ones . . . Commercial, Flight Instructor/Airplane, Instrument rating and Commercial Helicopter . . . Barbara is on International Board of Ninety-Nines . . . We thank you, Barbara, for your help with our race.

Thelma, better known as O.W.T., is Vice-Governor Southwest Section 99s . . . two AWTARS credited and coming up on their Classic . . . O.W.T. is a teacher on the ground but has 500 hours in the air . . . Husband Neil is a computer programmer and pilot. Wow, a great team!



EDNA GARDNER WHYTE — Pilot  
Roanoke, TX

PATRICIA HYDE — Co-pilot  
Eureka Springs, AR

**CLASSIC 34**

Piper PA 28-180 180 hp

*Sponsored by:*  
AIR TULSA INC.  
(Aircraft Sales)

Tulsa, OK  
AERO VALLEY AIRPORT  
(Flight Instruction Services)  
Roanoke, TX

We'll start by: Edna is past International President of the Ninety-Nines . . . has been flying and teaching flying more than 50 years . . . taught Army/Navy pilots, Fort Worth during THE war . . . served as Commissioned Army Nurse in the Phillipines. In her 70's, Edna bought/built an airport which hangars 136 planes . . . is an Aviation "Great" a "Flying Eagle" . . . has 118 trophies won in competitive flying. Edna carries a Commercial single land/sea, multi land, Flight Instructor Airplanes/Instrument, Private Helicopter and Glider, Edna flew twenty-five Angel Derbies (winning two) . . . several AWTARS . . . and many others . . . This adds up to 27,600 hours . . . member Fort Worth 99s.

Patricia is Assistant Director for "The Great Passion Play" . . . the No. 1 Outdoor Drama in the U. S. . . . flies company plane for her business . . . total of 750 hours . . . Commercial, single/multi land, Instrument Rating and Flight Instructor/Airplane . . . Arkansas 99s . . . flown two Angel Derbies. Husband Robert is a painter. Patricia says "having Edna as her instructor is a rewarding experience".

THANKS  
TO  
BRIVERS  
FOR THEIR

MANY  
COURTESIES



**DEBI PFISTERER** — Co-pilot  
Pittsburg, PA

**SUE SIMLER** — Pilot  
Trafford, PA

**CLASSIC 35**

**Beechcraft Sundowner C-23 180 hp**

*Sponsored by:*  
**ATC FLIGHT TRAINING CENTER**  
 Pittsburg, PA  
**ALLEGHENY BEECHCRAFT**  
 West Mifflin, PA  
**QUAKER STATE OIL**  
**GENERAL CRUISE AGENCY**  
 Pittsburgh, PA  
**TIGANO'S INN**  
 Pittsburgh, PA  
**R. ZADROZNY**  
 Upper St. Clair, PA  
**MOORE HARDWARE**  
 Pittsburgh, PA  
**D. M. HARRIS, INC.**  
 Pittsburgh, PA  
**MAGNAFLOW**  
 Annapolis, MD  
**DEAN TECH**  
 Pittsburgh, PA

A member of the Steel Valleys Chapter 99s, Sue has her Commercial, single/multi land, Instrument Rating, Ground Instructor in basic, advanced and instrument with total of 380 hours. The general manager and sales person for D. M. Harris, Inc., a manufacturer's representative of plumbing and electrical supplies, part-time ground and simulator instructor at ATC Flight Training Center, Sue finds time to enjoy hobbies of sewing and crafts. Her second Classic, having flown various proficiency races and one AWTAR.

Hold it, fellas! A professional fashion model for 12 years . . . Debi is now Jobber Development Sales Manager selling GMAC Delco Parts to independent retailers. She is vice chairman of Steel Valley Chapter and placed eighth in the Allegheny Air Derby . . . making a total of 240 hours. Racquetball is her favorite sport!

**Thanks To . . .**

**Elaine Needham and Frances Brown**



**DORIS MINTER** — Co-pilot  
Santa Monica, CA

**EMMA MCGUIRE** — Pilot  
Santa Monica, CA

**CLASSIC 36**

**Cessna 182 P 230 hp**

*Sponsored by:*  
**RALPH MCGUIRE**  
 Fireside Market

"Happiness is flying" and especially the challenge of an air race . . . Emma and husband, Ralph, operate the Fireside Market but Emma does all the flying . . . having netted 7,000 hours as a Flight Instructor and business/pleasure flying . . . add on single land/sea, multi land and Instrument Rating. Emma is already teaching grandchildren to fly and still has time to devote to Santa Monica Bay 99s . . . has flown many AWTARS, and others. We thank you for your 100% participation in our Classic!

Chairman of Santa Monica 99s . . . being educated to deal with children having special problems . . . employed as a secretary . . . Registrar for Olympid Continuation High School. Doris was well qualified in obtaining a bed for hers/Emma's room during the race last year . . . suite with two bathrooms, bar, couches. But, after 1,400 racing miles in one day, you gotta have a bed! Husband Rex is Judge of Santa Monica Municipal Court and pilot as is their son. Doris being trustee of Donald Douglas Museum and Chairman of Aviation Commission becomes quite capable with her Commercial, Instrument and 950 hours.

Go to it, team!

**A Special Thanks to . . .**

COMPLETE SERVICE AND OVER  
100 COLOR TV'S TO CHOOSE FROM.

RCA  
SONY  
ZENITH



PANASONIC  
MICROWAVE  
OVEN

KITCHENAID

Maurice Shaw

992-7071  
992-7081





LEE ORR — Pilot  
Spartanburg, SC



DOT PENNEY — Co-pilot  
Spartanburg, SC



MELINDA LYON — Co-pilot  
Bel Air, CA

ELIZABETH DINAN — Pilot  
Bel Air, CA

### CLASSIC 37

Cessna 172N 160 hp

*Sponsored by:*  
ORR AVIATION, INC.  
PALMETTO PRINTING

The flying Orrs . . . Lee and husband are the his and her of FBO in Spartanburg and Shelby, SC . . . three daughters all pilots! Lee, a member of Blue Ridge Chapter 99s, has obtained Commercial, multi engine, Instrument Rating, 1,000 hours . . . one AWTAR, one Angel Derby. Welcome to the Classic, Lee.

Formerly newspaper boy carrier . . . soda jerk . . . dime store clerk . . . high school teacher . . . social worker . . . insurance underwriting department, mother, grandmother . . . now PILOT with 140 hours and racing too! You've come a long way, Dot!

### CLASSIC 38

Cessna 172M 150 hp

*Sponsored by:*  
PEACEFUL SKIES  
(Pet Funerals)  
Los Angeles, CA

Flight Instructor at Claire Walters Flight Academy . . . recipient of Amelia Earhart scholarship and woman Pilot of the Year Award . . . two AWTARS, two Classics, the Baja and many smaller races . . . All this in 2,800 hours! Husband Don with General Motors. Elizabeth's 99 card says San Fernando . . . her license says Commercial, single/multi land, Flight Instructor Airplane/ Instruments.

Melinda, with 250 hours, is owner of Peaceful Skies (business offering unique service for Pet Owners). Husband John is Executive Vice President for Tosco Corporation . . . also a pilot — proud owners of Meyers 200. Welcome back to Air Race Classic the two of you!

## START



## ENROUTE STOPS



## TERMINUS

Profound gratitude to the individuals who willingly donated time and effort to coordinate the amenities necessary for a Cross Country Air Race.

*Thanks for . . .*

*Contributions*

*by*

**FLORIDA SUNCOAST  
CHAPTER NINETY NINES**

H. GLENN BUFFINGTON  
MARY AND BRAD PEARSON



TERESA MARTIN — Pilot

JAYNE OVERGARD — Co-pilot

**CLASSIC 39**

SCRATCHED

PAT McEWEN — Co-pilot  
Wichita, KS

MARILYN COPELAND — Pilot  
Wichita, KS

**CLASSIC 40**

Rockwell Commander 114 260 hp

*Sponsored by:*  
**COPELAND AIRPORT**

Hop into Copeland Airport, Wichita, and Marilyn gives special service . . . 1,500 hours . . . Private with Instrument rating . . . flew eight AWTARS . . . sooo much for International Ninety-Nines from Headquarters on down . . . candidate International treasurer 1980 . . . interests heaped up with aviation, dentistry and bits of music . . . Husband, Doctor John is a children's dentist and pilot. Welcome to our Classic . . . Marilyn and Pat.

Homemaker, Grandma, part-time Flight Instructor and a bit of Aerobatics, I'd say . . . 6,500 hours, Commercial single/multi land, Flight Instructor/Airplane and Instrument Rating. All the way from president of International 99s to the very bottom, Pat has been faithful to the 99s . . . Adding the smaller races plus 14 AWTARS and four Angel Derbies plus serving as corporation pilot for Steffen Dairy Foods Company. Husband of All Husbands, Owen, is a pilot and dairy executive . . . as those seven children reach sixteen, Pat starts teaching them to fly . . . Hang on Pat, for the four grandchildren's time!

*Thank you . . .*  
**Owen Industrial Products, Inc.**  
**Columbia, South Carolina**

**A Special Thanks to . . .**

**AUTA-TRONICS**

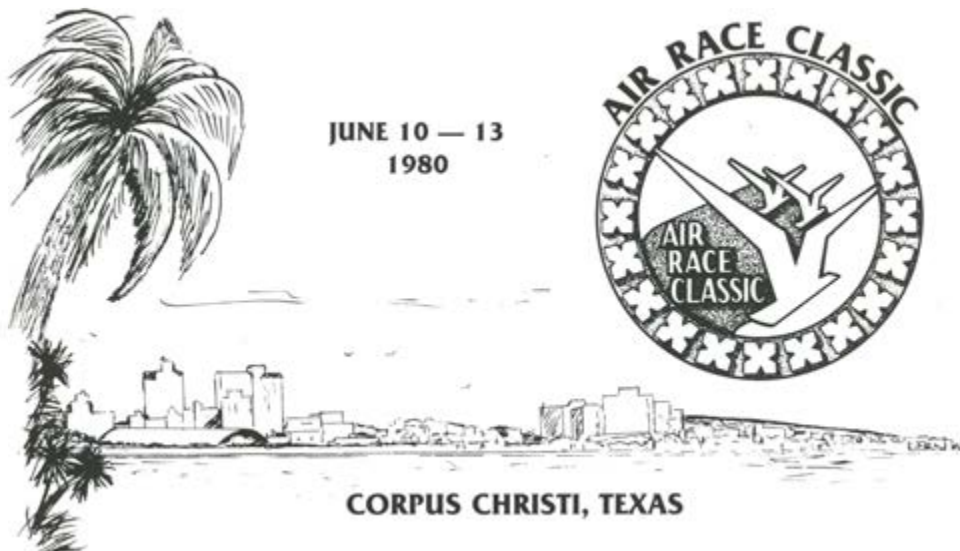
SALES · SERVICE · RENTAL

DISTRIBUTORS FOR RCA, JVC,  
PANASONIC, SONY

**AUTA-TRONICS**

DIVISION OF VIDEO OF SOUTH TEXAS, INC.

**AUTA-TRONICS 5025 Columbia-----853-7389**





MAYBELLE FLETCHER — Pilot

MARY BYERS — Co-pilot

PHYLLIS BAER — Co-pilot  
Mercer Island, WA

DODIE GANN — Pilot  
Friday Harbor, WA

**CLASSIC 41**

SCRATCHED

**CLASSIC 42**

**Beechcraft Sundowner C23 180 hp**

*Sponsored by:  
FLIGHTCRAFT, INC.  
General Aviation  
Seattle, Washington*

---

. . .we hold in gratitude —  
**HUGHES AIRWEST**  
**RUSSELL V. STEPHENSON**  
**JILL HOFFMAN**

---

We welcome this team in reverse . . . Dodie goes from right seat to left this year . . . Husband, E. K., is an author, rancher and pilot. Dodie's hobbies: tennis and riding . . . racing too? Flying the Baja in '79 helped to build the 500 hours . . . Dodie is a part of Greater Seattle 99s.

With 600 hours Commercial and Instrument . . . member Greater Seattle 99s . . . tennis as hobby. Beech Aero Center manager, Flightcraft Inc. family competition . . . son is pilot and husband Charles is an airline pilot.

Welcome aboard, Dodie and Phyllis.

**Events**

Impound opens .....	June 6, 1980 0900 CDT
Impound closes .....	June 7, 1980 1700 CDT
*Take-off Banquet .....	June 8, 1980 1930 CDT
*Pilot Briefing .....	June 9, 1980 0900 CDT
*Take-off Breakfast .....	June 10, 1980 0630 CDT
Finish .....	June 13, 1980 1700 EDT
*Awards Banquet .....	June 15, 1980 1930 EDT

\*Mandatory for racer



**JANICE MASSEY** — Co-pilot  
Atlanta, GA

**PAULINE MALLARY** — Pilot  
College Park, GA



**SAMMY McKAY** — Pilot  
Grand Blanc, MI



**MARIAN BANKS** — Co-pilot  
San Diego, CA

**CLASSIC 43**

**Beechcraft C23 180 hp**

The former charter pilot/Flight Instructor changed to Full Time Wife/Mother! Pauline has 3,425 hours . . . Commercial, single land/sea, Flight Instructor Airplane, Instrument Rating. "I race because I believe competition is 'healthy' " . . . Usually places high . . . has flown seventy seven speed and Proficiency Races and winner of Angel derby in 1977 . . . North Georgia 99s.

Bookkeeper, Victor Temporary Services . . . 1,525 hours, member North Georgia 99s . . . Welcome to Air Race Classic, Janice!

**CLASSIC 44**

**Cessna 210J 285 hp**

*Sponsored by:  
SAMMY McKAY  
(who else?)*

Sammy has held all offices in Michigan 99s . . . has a Real Estate license and still enough time to acquire 2,700 hours . . . Commercial . . . has flown and done well in nineteen AWTARS, twelve Angel Derbies and all Michigan Small Races. Could we have a race without Sammy? No!

Experience? Yes, Seventeen AWTARS . . . winning in 1972 after many near firsts . . . President of AWTAR three years . . . We thank you, Marian . . . 3,050 hours gives her an Airline Transport, single/multi land and one of the unusual Flight Instructor Instrument but not Airplane. Marian's son, a pilot, was born on Leo-Pard Street in Corpus Christi. Welcome again to Air Race Classic, Marian, and Corpus Christi.

*We are sincerely grateful to . . .*

**MODESTA DIVERSIFIED  
INDUSTRIES**

**A.J. EASTER**

**CHAPARRAL AVIAATION**

**DAVID THOMPSON**

**SUN PETROLEUM PRODUCTS**

**DOC LAIRD**



**GLASSON — LANMON**

**Aerial Photography**

**MOSAICS • OBLIQUES  
INDUSTRIAL  
PHOTOGRAMMETRY**

International Airport

(512) 884-1761





JUNE McCORMACK — Pilot  
Oceanside, CA

**CLASSIC 45**

Cessna 172N 160 hp

San Diego 99s sends us June with 854 hours . . . single/multi land and Instrument Rating . . . she is a salvage broker and flew the last AWTAR, the Baja Air Race and now we welcome her to Air Race Classic. June's husband, Jim, is a pilot.



Tower and Approach Controllers

*Thank you . . .*

**DALE CRAIG**

Toledo Area

Chamber of Commerce

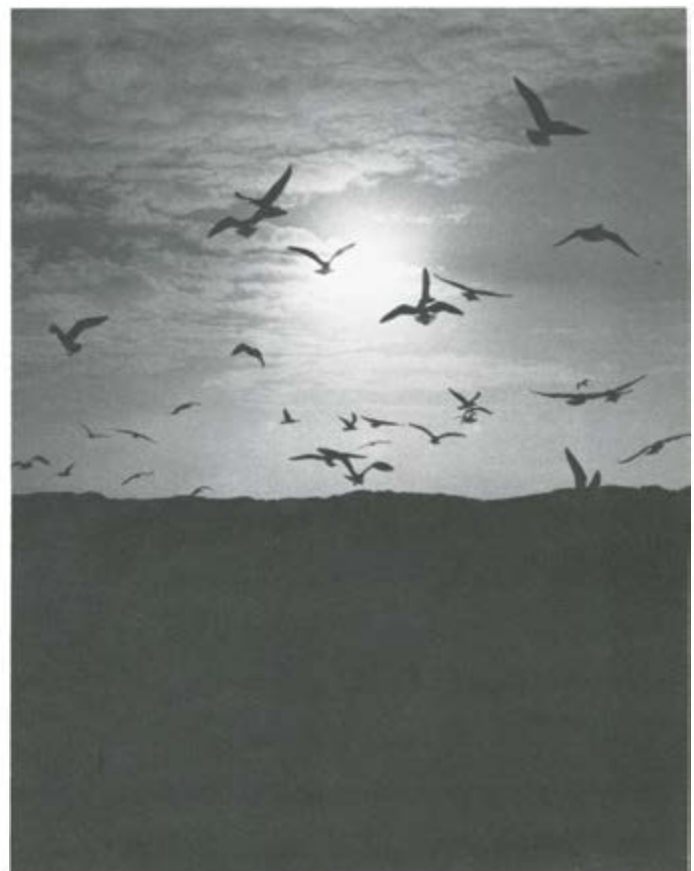
*Our Sincere thanks to —*

**MAVERICK MARKET**  
ERIC WENDL

**OMAHA COMPANY**  
THE HAWKINS

**B.D. HOLT COMPANY**  
PETE HOLT

**TOMMY AND JO ANN**



# AWARDS

## **FIRST PLACE**

Air Race Classic Award for Pilot and Co-Pilot and \$3,000 Cash. AVSTAR Electronic Flight Computer donated by Jeppesen-Sanderson. Perpetual Trophy donated by Toledo Area Chamber of Commerce.

## **SECOND PLACE**

Air Race Classic Award for Pilot and Co-Pilot and \$2,000 Cash. AVSTAR-Electronic Flight Computer donated by Jeppesen-Sanderson.

## **THIRD PLACE**

Air Race Classic Award for Pilot and Co-Pilot and \$1,000 Cash.

## **FOURTH PLACE**

Air Race Classic Award for Pilot and Co-Pilot and \$800 Cash.

## **FIFTH PLACE**

Air Race Classic Award for Pilot and Co-Pilot and \$700 Cash.

## **SIXTH PLACE**

Air Race Classic Award for Pilot and Co-Pilot and \$600 Cash.

## **SEVENTH PLACE**

Air Race Classic Award for Pilot and Co-Pilot and \$500 Cash.

## **EIGHTH PLACE**

Air Race Classic Award for Pilot and Co-Pilot and \$450 Cash.

## **NINTH PLACE**

Air Race Classic Award for Pilot and Co-Pilot and \$400 Cash.

## **TENTH PLACE**

Air Race Classic Award for Pilot and Co-Pilot and \$350 Cash.

## **HIGHEST SCORE BY FIRST TIME RACERS (Never flown any type race)**

\$100 donated by Air Race Classic.

## **TO THE TEAM WITH THE LOWEST SCORE**

\$100 worth of Monfort of Colorado finest sirloin strip steaks, air freighted to winner, donated by Mapelli Meat Company, Las Vegas, Nevada.

## **THE OLIVE ANN BEECH TROPHY**

For the Beechcraft either winning or placing highest in the race will be presented by Beech Aircraft.

## **HIGHEST SCORE IN EACH CLASS OF AIRCRAFT OF WHICH THERE ARE AT LEAST THREE IN COMPETITION:**

Cross Pen/Pencil Set donated by Helen Wilke.

145 - 199 hp    200 - 239 hp    240 - 299 hp    300 - 570 hp

## **TO TEAM FROM SOUTH CAROLINA WITH HIGHEST SCORE**

Courtesy of Stevens Beechcraft Inc., Greenville & Greer, South Carolina; A Model of Beechcraft V35B Bonanza.

## **TEAM WITH HIGHEST SCORE FROM: VIRGINIA, WEST VIRGINIA, KENTUCKY, TENNESSEE, NORTH CAROLINA, SOUTH CAROLINA, GEORGIA, FLORIDA, ALABAMA, MISSISSIPPI**

Two weeks of unlimited personal use of a new Beechcraft Sierra 24R (dry).

## **PILOT AND CO-PILOT FROM SOUTH CAROLINA WITH HIGHEST SCORE**

Silver Bowl to each courtesy of South Carolina National Bank, Columbia, South Carolina.

## \*Leg Prizes

Leg No.	From	To	Place	Award	Thanks to:
1	Corpus Christi	Abilene	1	\$100.00	Blanche Noyes (FAA retired) Washington, D. C.
			2	\$100.00	Bay Cities Ninety Nines
2	Abilene	Fort Smith	1		Sarah Coventry Jewelry by: Marguerite Nielsen, Van Buren, AR
			2	\$ 75.00	Sacramento Valley Ninety Nines
			3	\$ 25.00	Dallas Redbird Ninety Nines
3	Fort Smith	Salina	1	\$ 75.00	Sacramento Valley Ninety Nines
			2	\$ 50.00	Salina Area Chamber of Commerce
4	Salina	Waterloo	1	\$ 75.00	Kansas Ninety Nines
			2	\$ 50.00	Mr. & Mrs. J. D. Berkley Talmage, KS
5	Waterloo	Marion	1	\$ 99.00	Colorado Ninety Nines
			2	\$ 50.00	Kansas Ninety Nines
**6	Marion	Huntington	1		15" Handcrafted replica of Air Race Classic Bird by Pilgrim Glass Corporation
			2	\$100.00	Local Pilots, Huntington, WV
All contestants stopping at Huntington a 6" Handcrafted Glass Propeller by William F. Mayo, Manager Tri-State Airport					
7	Huntington	Columbia	1	\$100.00	Newell Manufacturing Co. Atlanta, GA
			2	\$100.00	Owsley & Sons Inc. Will Simmons, Ft. Mill, SC
			3	\$ 50.00	Newell Manufacturing Co. David Woody San Antonio, Texas

\*Teams placing in top ten not eligible for leg prizes.

\*\*Open to all contestants.

**Roberto — sculptor — designer of glass  
bird for Pilgrim Glass Company.**



## FIRST AIR RACE CLASSIC WINNERS — 1977



Left to right —  
 Marion Jayne, Nancy Jayne, Joyce Wells, Luana Davis, Norma Futterman, Virginia Showers, Esther Wright, Judy Hall,  
 Elinor Johnson, Pat Jetton, Janice Free, Jean Rose, Pat Gatlin, Pat Friedman, Velda Mapelli, Stephanie Mapelli and Ali  
 Sharp (inset).

## SECOND AIR RACE CLASSIC — 1978



Helen Davison

Sophia Payton



Dot Etheridge



Dot Wilson



Pat Jetton



Elinor Johnson



Helen McGee



Norma Draper



Sammy McKay



Winnie DePerow



Marion Jayne



Patricia Keefer



Helen Wilke



Kathy Long



Barbara Goetz



Thelma Cull



Joyce Wells



Alma Hinds



Susan Adler



Mary Santosuosso



# THIRD AIR RACE CLASSIC WINNERS — 1979



Marion Jayne

Nancy Jayne



Margaret Ringenberg

Pat Wilson



Claire Walters

Eleanor Ruby Moore



Virginia Wegener

Lynn Carey



Tanya Cunningham

Caroline Ann Morey



Joan Painter

Shirley Tanner



Dot Etheridge

Dot Wilson



Joyce Wells

Alma Hinds



Helen Davison

Sophia Payton



Ilovene Potter

Jan Gammell

# Use Our Rooms ... or Bring Your Own!

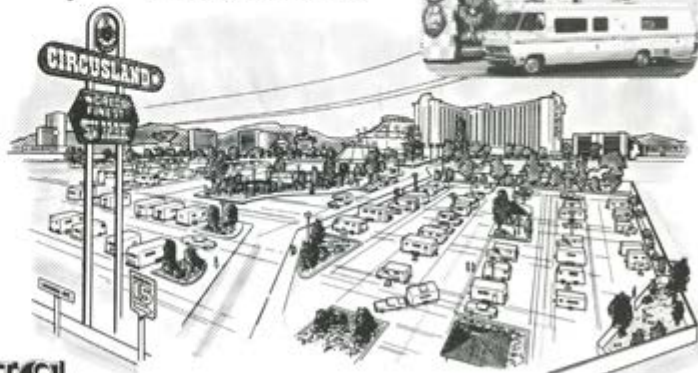


- 421 recreational vehicle spaces with up to 50-amp service
- Luxury facilities in garden green surroundings
- Laundry room • Pet run
- Pool, saunas, Jacuzzi • Playground
- Restrooms • Dump station
- Mini bus service from Park to Hotel
- Community room • Game arcade



- 800 deluxe rooms and suites
- Free circus acts daily

- Five dining areas
- 1000-car free garage parking
- Midway games
- On the Las Vegas Strip



**CIRCUS CIRCUS**

HOTEL / CASINO / RV PARK

TOLL FREE 800-634-3450 or call  
702-734-0410

P.O. BOX 14967 • LAS VEGAS, NV 89114

**Chaparral**  
AVIATION INC.



**BEECHCRAFT SALES & SERVICE  
FOR MOST OF TEXAS**

- Flight Training — Ground School
- Large Aircraft Storage
- Complete Line Service
- Experienced Shop Service
- Parts and Accessories
- 24 Hour Charter Service
- Avionics Sales and Service
- Air Frame Maintenance and Overhaul

Dallas 214/239-1301 • San Antonio 512/824-7503 • Corpus Christi 512/884-3931  
Victoria 512/578-3506 • Midland 915/563-3205 • Amarillo 806/376-5203  
Ft. Worth 817/589-0939 • Lubbock 806/762-0117 • Wichita Falls 817/322-2084



## **MAULE FOR EXCEPTIONAL STOL PERFORMANCE EXCEPTIONAL SPEED CAPABILITY**

It is a rare happening when a STOL aircraft also excels in the speed category, but the MAULE is a proven breed. Currently in production for 1980 are five M-5 models and all have MAULE'S great STOL/Speed performance. There is the M-5-210C, powered by a 210 HP Continental fuel injected engine, the M-5-180C, powered by a 180 HP Lycoming engine, this version provides a more economical aircraft with very similar performance, the M-5-210TC with a 210 HP turbocharged Lycoming, the answer to requests for improved performance at high altitudes, and the M-5-235C with a 235 HP straight carbureted Lycoming engine or a 235 HP fuel injected Lycoming. We are very excited over the added performance and cosmetic effect the fuel injected engine has given our best selling version, the M-5-235, by eliminating the need for the large airscoop beneath the bottom cowl.

Whatever model suits your needs you will get MAULE'S proven reliability and excellent performance.

For dealer info in your area contact our sales department at 912-985-2045 or write to factory address below.

MAULE Aircraft personnel wish the best of luck to pilot, Esther Wright Lowry, and co-pilot, Judy Hall, both of Georgia, who are competing in this years AIR RACE CLASSIC in a MAULE M-5-235C.

## **MAULE AIRCRAFT CORPORATION**

*SPENCE AIR BASE MOULTRIE, GEORGIA 31768*

MAULE owners and enthusiasts interested in information on the MAULE ROCKET Association, may write John Colman, MAULE ROCKET Association, Inc., 6807 South MacDill, Tampa, Florida 33611. John edits a very informative quarterly Newsletter available to MAULE ROCKET Association members.

