



June 25-28, 1991
Official Program \$5.00

Laughlin, Nevada
to
Huntsville, Alabama





Bullhead/ Laughlin AIRPORT

Located in Bullhead City, Arizona overlooking the Colorado River, just steps away from the Number One Entertainment & Gambling Spot in Laughlin, Nevada.

- 100LL Jet A Fuel ▪ Hangars
- Tie Downs ▪ Rental Cars ▪ Repairs
- 24 Hour Market & Service Station

Free Ferry or Shuttle Service to Don Laughlin's Riverside Resort Hotel & Casino



Undergoing expansion.

EXPERIENCE THE LEGEND...

at Don Laughlin's Riverside Resort Hotel & Casino



Located in Laughlin, Nevada on the banks of the Colorado River directly across from the Bullhead-Laughlin Airport.

Celebrating our 25th Anniversary this year.

- Two Showrooms featuring Top Name Entertainment
- 24 hr. Gaming Excitement!
- 1,500 Slots ▪ Roulette ▪ "21"
- Craps ▪ Poker ▪ \$10,000 Bingo
- \$100,000 Keno ▪ Big 6
- Much Much More!



FOR MORE INFORMATION CALL: TOLL-FREE (800) 227-3849 ▪ IN NEVADA (702) 298-2535



A Special Thank You To All
1991 Air Race Classic Contestants
and

Laughlin, Nevada/Bullhead City, Arizona

Provo, Utah

Vernal, Utah (fly-by)

Worland, Wyoming

Philip, South Dakota

Detroit Lakes, Minnesota

Minocqua-Woodruff, Wisconsin

Burlington, Iowa

Mountain Home, Arkansas

and

Huntsville, Alabama

AIR RACE CLASSIC LTD.

318 International Drive
Corpus Christi, Texas 78406

EDITORS.....PAULINE GLASSON AND BARBARA LEWIS
PUBLISHER.....GOLDEN BANNER PRESS, INC.

INDEX

CONTESTANTS (ALPHABETICAL LISTING).....	3
AIR RACE CLASSIC DIRECTORS.....	5
RACE START.....	6-7
ENROUTE STOPS.....	8-15
RACE TERMINUS.....	16-17
HANDICAPS.....	18-19
DESIGNATED AIRPORTS ON THE ROUTE.....	19
EVENTS.....	19
CONTESTANTS.....	21-52
AWARDS.....	53
LEG PRIZES.....	54
1977 THRU 1987 AIR RACE CLASSIC WINNERS.....	57
1988 AIR RACE CLASSIC WINNERS.....	58
1989 AIR RACE CLASSIC WINNERS.....	59
1990 AIR RACE CLASSIC WINNERS.....	61

CONTESTANTS

Classic No.	Name	Page	Classic No.	Name	Page
18	Alderman, Marilyn	32	1	Keza, Corrine	21
14	Anderson, Dottie	29	38	Knight, Bliss	43
51	Anglin, Mary	52	42	Leon, Sienna	45
36	Bavuso, Kathleen	42	33	Lepore, Rose	40
22	Beck, Sheila	34	41	Lewis, Barbara	45
46	Beers, June	48	4	Lowry, Esther	22
8	Bentley, Christina	25	18	Lunger, Carolyn	32
43	Bera, Fran	47	39	Martin, Barbara J.	44
46	Bergishagen, Jane	48	47	Matteson, Georgia	50
44	Bissell, Marcie	47	43	McCormack, June	47
48	Blais, Mary Lee	50	51	McKay, Sammy	52
28	Blech, Lorrie	37	35	Monroe, Alice	42
49	Boyle, LaVonne	51	39	Mullins, Diane H.	44
3	Buhl, Rita	22	4	O'Kelley, Genie Rae	22
25	Buss, Evelyn	36	30	Pearce, Martie	38
48	Cabot, Michelee	50	13	Pickering, Aileen	29
44	Carruthers, Sandra	47	27	Pilaar, Carolyn	37
21	Chapple, Susan	34	40	Riech, Francine	44
28	Clifford, Royce	37	10	Ringenberg, Margaret	26
45	Coco, Susan	48	12	Roehrig, Elaine	27
38	Crandall, Valora	43	30	Rogers, Shirley	38
19	Creason, Mary	33	50	Schiff, Daphne	51
29	Downey, Deborah	38	16	Schiffman, "Sunny"	30
37	Duke, Jean	43	15	Shaw, Diane	30
21	Emmons, Chris	34	17	Sheldon, Ruby	32
10	Feigenbaum, Lois	26	31	Shropshire, Susan	39
7	Fisher, Sandra	25	14	Sloan, Jean	29
50	Fogle, Adele	51	26	Steinberger, Joan	36
15	Frame, Nancy	30	40	Strate, Dot	44
13	Futterman, Norma	29	7	Swain, Gail Ann	25
41	Glasson, Pauline	45	42	Swallow, Helen	45
20	Grupenhagen, Esther	33	16	Tarabetz, Susan	30
45	Hackett, Monica	48	17	Thayer, Marge	32
22	Hackler, Jeanette	34	37	Toon, Nancy	43
24	Hankin, Jo Ann	35	6	Tucker, Karen	23
20	Haskins, Mardell	33	3	Volk, Mary Jo	22
24	Henney, Suzy	35	2	Walker, Bess	21
1	Hensley, Tookie	21	34	Walton, Kathy	40
35	Herndon, Peggy	42	33	Wappler, Cathy	40
9	Hilchie, Joyce	26	19	Webb, Phyllis	33
2	Honer, Anne	21	34	Wells, Joyce	40
36	Hope, Rosalie	42	27	Wheeler, Gary	37
29	Hovanek, Michelle	38	9	Whistle, Eddie	26
8	Jahn, Gretchen	25	12	Wilson, Marolyn	27
11	Jayne, Marion P.	27	25	Winn, Diane	36
47	Johnson, Donna	50	26	Wright, Jenny	36
49	Jordon, Susan	51	6	Yoder, Janet	23
11	Keefer, Patricia	27	31	Young, Lucy	39



SNOOPY and the gang at the REDWOOD EMPIRE ICE ARENA

Wish you all smooth flights & success



©1958
United Feature
Syndicate, Inc.

Snoopy's Gallery features a museum containing Charles M. Schulz awards, drawings and personal memorabilia. The Gift Shop portion of the building houses the largest selection of Snoopy products in the world. The Gallery/Gift Shop is open daily from 10am to 6pm. It is located within walking distance of Coddington Center. Turn west off Range Avenue onto West Steele Lane. Snoopy's Gallery and the Redwood Empire Ice Arena is located one block down on the right.



ALL LOCATED AT:

REDWOOD EMPIRE ICE ARENA

1667 West Steele Ln. Santa Rosa, California

DIRECTORS



BARBARA LEWIS - PRESIDENT

VELDA KING MAPELLI
1977-1984 PRESIDENT

PAT JETTON
1985-1987 PRESIDENT

ESTHER LOWRY
1988-1990



ESTHER LOWRY



SUE GRAY



NORMA FUTTERMAN



PAULINE GLASSON



MERRY ROBERTSON



"TOOKIE" HENSLEY - PRES. ELECT



GENIE RAE O'KELLEY



GENE FITZPATRICK



LORRIE BLECH



SAMMY MCKAY



DOTTIE ANDERSON





Laughlin/ Bullhead City

Welcome to Laughlin, Nevada — the fastest growing boom-town in the West! Located in the beautiful Colorado River Valley, this growing resort community is famous for its 24-hour gaming action, fishing, boating, and other recreational activities.

Located just 90 miles south of Las Vegas, Nevada, Laughlin is popular for its friendly, relaxed atmosphere. Whether you're enjoying the excitement of the casinos or just relaxing on nearby Lake Mohave or the Colorado River, you'll discover the enchantment of this oasis in the desert. Nestled in the nearby Black Mountains is Oatman, Arizona, a small mining town, rich in history and beautiful scenery. These and other activities promise a fun-filled variety of entertainment to the area.

The Bullhead City Airport, in Bullhead City, Arizona, services the Bullhead City/Laughlin communities and is located just across the river from Laughlin. The airport provides facilities for small jets, light aircraft and general aviation. The airport, owned and operated by Bullhead Airport, Inc. is currently under expansion and when completed in the Fall of 1991, will have a 100 foot-wide, 7500 ft.-long strip.

Sam's Town Gold River Hotel and Gambling Hall, your host for the Air Race Classic Kickoff, extends a warm welcome to all race participants. We hope you enjoy your stay in Laughlin and are happy to be a part of this year's event!



MAUNTY COLLINS
General Manager
"Sam's Town Gold River"
Honorary Starter



DON HENSLEY
Official Starter



KAY ROAM
FAA Specialist
Weather Briefing
Prescott, AZ



GLENN SIMS
Chief Mechanic



PAUL E. STEBELTON
Aviation Safety Consultant
"Remember — Aircraft Control is always primary
or don't drop airplane to fly microphone."



JANET & JIM LANDFRIED
Chief Timers and Judges



DIANNA FREDRICK
Start Chairman, Chief Judge
& Timer



London Bridge/Havasu 99s ARC Start Committee — BETTY WRIGHT; MARJORIE BARTIK; MILLIE LANGWELL; DEE GUTHRIE; RHONDA INMAN; TOOKIE HENSLEY; DIANNE FREDRICK; JOYCE WADE; SANDRA FISHER; AND GAIL SWAIN.



Provo

Welcome to Provo, a city that radiates warmth, friendliness, productivity and a commitment to progress. Framed between the majestic Wasatch Mountains and Utah Lake, the natural scenic beauty makes Provo "A Place Apart".

Year-round recreational opportunities are almost endless. Climb famous Timpanogos Mountain, sail Utah Lake or windsurf nearby Deer Creek Reservoir. Golf, ski, fish, hunt, camp, picnic or join the thousands who converge on Provo each year for the annual America's Freedom Festival, one of the nation's largest and best patriotic celebrations.

Provo is also the home of Brigham Young University, the largest private university in the U.S. Students come from every state and from 85 countries to make up the 27,000 student campus.

The airport is located approximately two miles southwest of downtown Provo and provides complete general aviation service for the Utah Valley area. Pilots enjoy using the airport because of its excellent facilities and convenient location just outside the congested Salt Lake City Terminal Control Area.

Three fixed base operators (FBO's) offer a full range of flying services and a major U.S. helicopter company is located at the airport. Navigation and flight facilities include an ILS, VOR, VASI'S, AWOS III, UNICOM, night lighting and a transceiver to Salt Lake City Approach Control.

We are elated that Provo was selected as your first stop and warmly welcome all Air Race Classic participants.



City Council seated left to right: STAN BROWN; Mayor JOSEPH JENKINS; and BARBARA SMITH. Standing left to right: BEN PORTER; STEVE CLARK; RON LAST; MARK HATHAWAY; GORDON BULLOCK.



Left to right: FRANCINE RIECK, Chairman; and DOT STRATE, CO-CHAIRMAN.

SIDNEY SANDAU — Chairman

JIM MATHIS — Airport Manager

RICHARD MYRUP — SLC Tower

GLEN FLANNIGAN — OGD Tower

GENE HOMER — AFSS Cedar City

Timers: JAN KNOWLES; CAROL CLARK; RUTH KENDRICK and DEE RICORD.



ALBERTA NICHOLSON, "For Old Times Sake."



Vernal

Let us show you the beautiful canyons and rivers of Dinosaur National Monument. Instead of riding in a van or bus to start your trip, why not fly and see the rivers you will be running?

Just a few of the many things you may see will be Split Mountain Gorge, Jones Hole, Whirlpool Canyon, Steamboat Rock, Yampa Canyon, Hell's Half Mile, and Lodore Canyon.



START YOUR RIVER TRIP WITH A SCENIC FLIGHT



TOM WARDELL
Airport Manager

JOHN GARDNER
FBO
Dinaland Aviation





Worland ... the hub of the Big Horn Basin

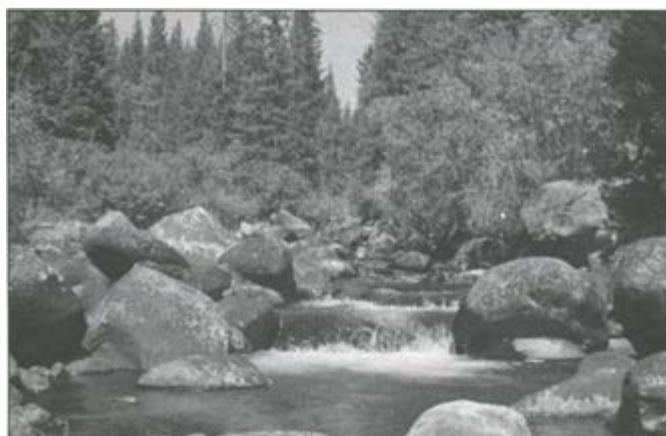
Worland, the hub of the Big Horn Basin, is a convenient tourist and trade center born of an agricultural background and known today for its nearby recreational opportunities and superior quality of life.

Situated on the western slopes of the magnificent Big Horn Mountains, Worland is an easy day's drive from Mount Rushmore in the Black Hills, is only three hours from Yellowstone National Park and is a half-day from Grand Teton National Park.

This central location along one of three Scenic Byways to and from the National Parks is a haven for vacationers out to discover a part of Wyoming that is truly a study in contrasts.

From the sun-baked clay in the Gooseberry Formation in the Painted Desert west of town, to the lush meadows and towering pine forests in the Big Horn Mountains to the east, Worland offers vacation opportunities that are limited only by your imagination.

Welcome Air Race Classic!



FSS Manager



FSS Operator



FSS Operator



JOE NEHL,
Airport Manager.



Left to right: MARIE ENGLEMAN; MARGARET ROGERS; and MABEL BLAKELY, Timer.

BUD DAHLSTROM
FSS



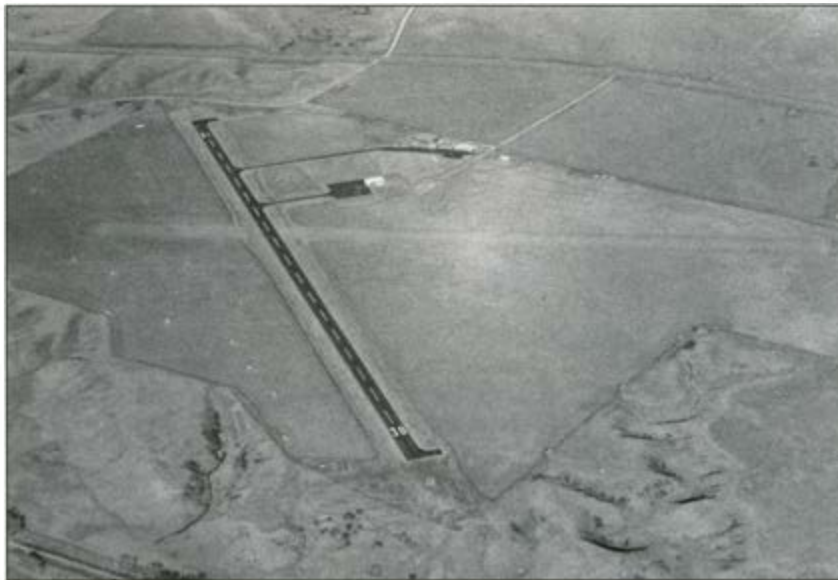
ANDREA DERBY
Timer



SHIRLEY EVERETT
Timer



NICKI WEAVER,
Stop Chairman



Philip

The daring men who penetrated this Indian country told the tales of rich prairie pasture west of the Missouri River, and lured cattlemen, including the immigrant from Scotland, James Philip, or "Scotty" as he was called. Scotty was well-known in promoting and establishing huge cattle herds. He established the 73 Ranch in 1881 on the Bad River one mile west of Powell. A United States Post Office was set up at this ranch and named Philip Post Office, in honor of the influential cattleman.

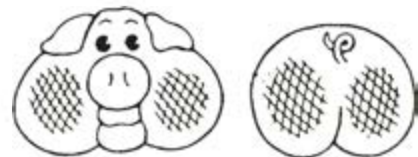
The land along the Bad River was good ranch land and handy to Fort Pierre. Many homesteaders attempting to prove up on a 160-acre homestead were ranch hands who had worked for Scotty Philip or had ridden in the 73 Ranch round-ups.

The Chicago and Northwestern Railroad picked the area at the forks of the Bad River to plot out a town and sell lots. The sale was held on May 9, 1907, and the town was born. With the settlement of the new town the post office was moved once again and the town took on the same name as the post office ... Philip.

"Please accept a warm welcome to our town. We are glad you are here and sincerely hope that your stay is enjoyable. Come back again to the friendliest little town in South Dakota!" — Mayor Nancy Ekstrum.



A small town with a big city commitment to service!



We got you! Coming & Going!



LEE VAUGHAN
ROBERTA VAUGHAN
MERLIN BENNETT
Timers

NANCY EKSTRUM, Mayor.



VERN VANDERMAY
Airport Manager



MIKE GEBES
City Council Member
Airport Committee



MARSHA SUMPTER
Stop Chairman

Detroit Lakes

Activities to match every whim in every season! That's why we say, "It's all here all year!"

Four hundred twelve lakes in a 25 mile radius, make for a popular playground for the whole family; swimming and fishing in the summer; skiing and ice fishing in the winter.

Festivals dot the area's activity calendar: a mid-winter curling fest, and summer Scandinavian Festival, "WE" Country Music Fest, and Art in the Park. Frequent theater by the "412 Players" punctuates the seasons while tradition itself spawns the week-long Water Carnival and the Pine to Palm Golf Tournament.

But that's only the tip of the iceberg. Back to nature is an easy task in greater Detroit Lakes with the pink and white stateflower called the lady's slipper, the Minnesota loon, the blueberry, and the white pine all finding comfortable homes in the terrain.



Eighteen miles NE of Detroit Lakes, 43,000 acre Tamarac National Wildlife Refuge is home to increasing number of nesting bald eagles and the newly reintroduced trumpeter swan.

Within an hour's drive, Itasca State Park surrounds the trickle that starts the mighty Mississippi on its long journey.

The Detroit Lakes Airport gets better every year as a full service FBO along with on field VOR (111.2) and certified upholstery shop. For assistance, call (218) 847-3233.

Air Race Classic participants: Detroit Lakes and surrounding environs extend a warm welcome to you.



Left to Right: ROGER O'BERG, Airport Manager; PHIL MORUD; JERRY FINDLEY; LINDA BAUMGARTEN; and MIKE OLSEN.



SALLY HAUSKEN
Chairman



SHIRLEY CHRISTENSON
Timer



EM LASKEY
Chairman



PAT KOSLOWSKY
Timer

LARRY FULLBOLT
Mayor
GERALD E. FRICKE
Manager
AFSS
Princeton

**Thanks
North Dakota and
Minnesota 99s**



JANET L. MOHR, Aerial Photographer, Detroit Lakes, Minnesota.

Minocqua-Woodruff



Lakeland Airport, Noble F. Lee Memorial Field, is owned and operated by the townships of Arbor Vitae, Lac du Flambeau, Minocqua and Woodruff and is located on North Farming Road in Arbor Vitae. The airport was first used during the mid-1920's. It was a private field owned by the Standard Oil Co. and in 1945, Standard sold the airport to the town of Arbor Vitae for one dollar. In 1958, the name of the airport was changed from Arbor Vitae Airport to Lakeland Airport and as the townships of Arbor Vitae, Lac du Flambeau, Minocqua and Woodruff banded together, they formed an airport commission to operate the airport. Noble Lee was the airport manager

from 1950 to 1982, and during that time, the airport continued to grow and flourish.

The airport services many townships in Oneida and Vilas Counties, some of which are Arbor Vitae, Lac du Flambeau, Minocqua, Woodruff, Boulder Junction, Hazelhurst, Lake Tomahawk and Manitowish Waters. Many local people and businesses utilize the airport facilities, as well as many visitors to the Lakeland area that fly in from southern Wisconsin, Illinois, Indiana, and other states. During the summer months, there is a shuttle service from Lakeland to the Chicago area. Also, many air ambulance and charter services utilize the airport as well. There is a considerable amount of use by sophisticated multi-engine aircraft, including Lear's, Citations and Gulfstream jets.

Lakeland Airport has a north-south 5,000' paved runway and also an east-west 3,600' paved runway. Three runway ends employ NDB (Nondirectional Beacon) Instrument approaches at the present time and the airport commission is presently planning for an ILS (A Precision Instrument Landing System) for runway 36 in the near future. The airport has approximately 15,000 operations (Take-Offs and Landings) a year and 36 permanently based aircraft.

There are four national weather observers at the airport, who report the local weather conditions on an hourly basis during normal business hours throughout the year. Aviation fuel and jet fuel are available at Lakeland, as well as aircraft maintenance and other services.

Lakeland Airport is one of the finest facilities in Northern Wisconsin and serves a great number of people in our communities.

RON RILEY
AFSS
Greenbay

JON SKOREY
CAROL SKOREY
HELEN WARNER
Timers



FBO Operators/Owners Left to right — JON SKOREY; CAROL SKOREY; HELEN WARNER; and NORM WARNER.

Burlington

Burlington, Iowa is a city of 30,000 people located on the Mississippi River in southeast Iowa. Its roots date back to 1805 when Lieutenant Zebulon Pike stopped here while mapping out the Louisiana Purchase.

In 1833, Burlington was opened for settlement and quickly became a population center. Burlington served as the First Territorial Capitol of Iowa in 1838, and the Second Territorial Capitol of Wisconsin prior to that in 1837.

Built on scenic bluffs overlooking the Mississippi River, Burlington has a wide array of Victorian architecture. Some of this architecture can be found in the Heritage Hall District, which is a 29-block residential area located in the National Register of Historic Places. Also located in this area is Snake Alley, touted by Ripley's Believe It or Not, as the "crookedest street in the world."

The Burlington area is a regional hub with over 350 retail stores and 50 restaurants. Major industry includes: J. I. Case (backhoes), Iowa Army Ammunition Plant (ammunition for TOW and Patriot Missile Systems), Champion Sparkplug, and Iowa's newest industry, Riverboat Gambling, which is operated by Steamboat Casino River Cruises.

The city of Burlington warmly welcomes the arrival of the Air Race Classic!



RON REMMERS
President
Remmers Aviation, Inc.



Remmers Aviation, Inc. Employees - left to right: GREG GOBBLE, Service Manager; SCOTT SOVERN, Mechanic; RON PILKENTON, Pilot/Flight Instructor; TOM TOMKINS, Pilot; TOM JAMESON, Line Service Manager; POLLY HAMILTON, Office Manager; TERRY GRIFFIN, Line Service; and JAIME METZGER, Line Service.



MAUREEN CHRISTENSEN
Stop Chairman



LuEtta WHITE
Timer



HELENE HOLTON
Timer



MARY LOU WRIGHT
Chief Timer

ROBERT C. BAIRD
AFSS

MARTHA PLOWMAN
Timer

Mountain Home

Now this is living!

Nestled in the Ozarks of Arkansas is a town you may have only thought existed in your dreams. The air is clean and freshly scented with forests, streams and lakes. Townspeople are not afraid to walk their streets at night. The crime rate is one of the lowest in the nation.

Bull Shoals and Norfolk — proudly called the “Twin Lakes” — are famous for bass, trout, catfish, walleye and crappie — and, there’s no closed season on fishing! The lakes also provide huge uncrowded playgrounds for houseboating, cruising and water sports.

Mild weather allows you to enjoy the outdoors all year long. The pace is easy; life is gentle. It’s a good place to grow up. It’s a good place to wind down.

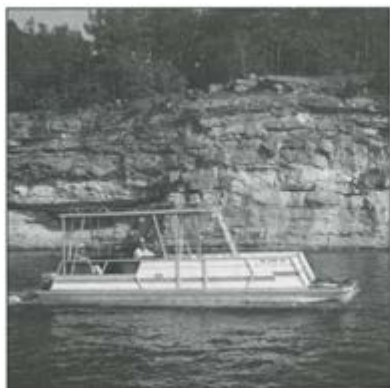
In addition, we have one of the lightest tax burdens in the country. Health care is exceptional. Two hospitals provide most medical specialties and sub-specialties with a variety of related medical services including dialysis and a radiation therapy. We have six nursing homes. Our libraries offer a multitude of volumes, plus films and programs for senior citizens including delivery to shut-ins. Continuing education is available at N. Arkansas Community College. We are well served by shopping centers, a shopping mall, a wide variety of financial services and places to dine. Lighted tennis courts, an 18 hole golf course, bowling alleys, and a city owned swimming pool are available to the public.

Baxter County Regional Airport is ten miles from the city limits. It has 5,000 feet of paved and lighted runway, a complete fixed base operation and six daily Executive Express II commuter flights.

There are dozens of churches in the Mountain Home area. Clubs, organizations and senior activity groups are plentiful. Our AARP chapter has over 5000 members.

It’s no wonder “Retirement Places Rated”, a popular reference book, has named our area the 15th best retirement spot in the United States. It’s another way of saying, “Now This Is Living!”

Enjoy your stay in the Mountain Home area and please visit us as often as you can!



JOYCE WARGER, Chairman and NELL HUDSPETH.

JACK L. NIMMO
AFSS



EVELYN BRAESE and BILL BRAESE
Timers



CAMELIA SMITH
Timer



PAT DITSCH



Right to left: RICK GICLA, Flight Instructor;
ED LINCK, Manager; SONJA BLASDEL,
Secretary; JEFF SWATERS, Line Tech.

Huntsville ... the sky is not the limit



Not too long ago Huntsville was a sleepy southern town. A series of events brought Huntsville to the world's attention.

The late Dr. Wernher von Braun and his team of German rocket scientists came to Huntsville in 1950. Their work would land a man on the moon and propel Huntsville into the Space Age. The U.S. Army consolidated its rocket and missile projects at Redstone Arsenal and assembled a force of engineers, scientists and technicians who would spearhead America's race to space. Industrial contractors were attracted by the Army programs forming the foundation for the community's prominent place in the aerospace industry.

In 1960 NASA established the George C. Marshall Space Flight Center which became NASA's largest field operation. The result is a diverse industrial community of technological and manufacturing companies.

In Huntsville, the history and the future of our nation's involvement in space are visible at the Space and Rocket Center.

Huntsville was Alabama's first English-speaking settlement and the first capital of the state. By 1890, Huntsville was one of Alabama's thriving textile centers. The town grew rapidly, fed by the cotton economy, and her large concentration of antebellum homes is a beautiful reminder of those times.

The entire Twickenham Historic District is listed on the National Register of Historic Sites and presents a living museum of 19th century architecture. The Museum Village at Constitution Hall Park borders the Twickenham District. The park is the birthplace of the state of Alabama.

Welcome to Huntsville International Airport! The staff of Huntsville Aviation and the Alabama 99s look forward to your safe arrival.



DOUGLAS J. DuPEROW
Scorer/Judge



BILL WHATLEY
Judge



JUANITA
HALSTEAD
Judge



PAT FRIERSON
Chairman



Space and Rocket Center.



Pathfinder ... The nation's only full size space shuttle exhibit.



JIM BAILEY
Tower Chief



NOAA Weather Service Personnel



Customer Service Personnel



Left to right - ATCS STEVE SWISHER; ATCS DIANA BROOKS; ATCS KEITH BRADLEY; and SATCS BUDDY ELMORE.



Left to right - ATCS DAVID McELORY; and ATCS MILES ELROD.



SATCS
ROY LEE ROBERTS



Alabama 99s - Terminus Committee



CLAUDIA CONN
Timer



MIRIAM PULLINS
Timer



ANN TAYLOR
Timer

AIR RACE CLASSIC

1991 Handicaps

MAKE/MODEL	HP	MPH	MAKE/MODEL	HP	MPH
BEECHCRAFT			Cardinal RG 177 ('71-'73)	200	150
Baron C55-E55, 58	570	220	*Cardinal 177B II ('77-'78)	180	135
Baron A55-B55	520	213	*Cardinal 177B II ('75-'76)	180	134
Duchess 76	360	175	*Cardinal 177B ('70-'74)	180	130
Travel Air B95A-E95	360	185	*Cardinal 177A	180	129
Bonanza 36 & A36	285	181	*Cardinal 177	150	119
Bonanza V35A, V35B	285	181	Cutlass 172 RG	180	142
Bonanza V35	285	182	Skyhawk R 172K XP	195	132
Bonanza S35	285	183	Skyhawk P&Q	160	121
Bonanza E33C/F33C	285	187	Skyhawk 172 N	160	120
Bonanza (Debonair) C33A-F33A	285	182	Skyhawk 172 M	150	119
Bonanza P35	260	179	Skyhawk 172 I-L	150	115
Bonanza G33	260	177	(172-I-L - NOT eligible with Prop # IC172/MTM 7553))		
Bonanza (Debonair) B33-F33	225	166	Skyhawk 172 ('62-'67)	145	112
Sierra C24R ('82-)	200	143	Skylark 175C	175	122
Sierra B24R C24R ('77-'81)	200	142			
Sierra A24R	200	144			
Musketeer A23/24	200	132	GULFSTREAM COMMANDER		
Musketeer C23 Sundowner	180	123	(GRUMMAN AMERICAN & ROCKWELL COMMANDER)		
Musketeer A23 II & III	165	120	Cougar GA-7	320	173
Musketeer 23	160	118			
Musketeer Sport A23-19, B19	150	115			
Musketeer B23 & C23 Custom	180	124	Rockwell Commander 114	260	168
BELLANCA			Rockwell Commander 112B	200	147
Super Viking 17-31A (1978)	300	171	Rockwell Commander 112A	200	145
Super Viking 17-31 & 17-31A (-'77)	300	169	Rockwell Commander 112	200	144
Super Viking 17-31	290	168	*Grumman Tiger AA5B	180	142
(Vikings - Lycoming only)			*Grumman Cheetah AA5A	150	134
Bellanca 14-19-3 A-C	260	167	*Grumman Traveler AA5A (-'75)	150	128
Decathlon 8KCAB	180	120	*Grumman Traveler	150	119
Citabria 8GCBC	180	120			
Citabria 7KCAB & 8KCAB	150	119	MAULE		
Citabria 7GCBC & 7GCAA	150	118	M-5 235C	235	140
CESSNA			M-4 220C	220	137
Cessna 310 D	520	204	M-4 210C	210	135
Cessna 310 R	570	216	M-5 180C	180	128
Cessna 337 G-Q	520	209			
Cessna 337G	420	180	MEYERS		
Cessna 337 A-F	420	175	200D	285	185
Centurion 210 J	285	182	200 A-C	260	182
Centurion 210 G&H	285	181			
Centurion 210 F	285	176	MOONEY		
Centurion 210 D&E	285	177	M201J	200	176
Centurion 210 B&C	260	172	Chaparral M20E	200	161
Cessna 205 & A	260	143	Executive M20F	200	152
Super Skywagon U-206, U-206A & P-206 B-E	285	148	Master M20D	180	126
Skywagon 185 A-E	260	149	Ranger M20C	180	149
Skylane R182 RG	235	160	Statesman M20G	180	147
Skylane 182Q	230	147			
Skylane 182P ('75-'76)	230	146	PIPER		
Skylane 182P (-'74)	230	144	Aztec PA23-250 ('77-)	500	196
Skylane 182 E-N	230	144	Aztec PA23-250 (-'76)	500	194
Cessna 180 E-K	230	146	Seneca PA-34	400	177
Cardinal RG 177 ('77)	200	154	Seminole PA44-180	360	172
Cardinal RG 177 ('74-'76)	200	153	Twin Comanche PA-39	320	187
			Twin Comanche PA-30 & B & CR	320	186
			Twin Comanche PA-30 C	320	184

MAKE/MODEL	HP	MPH	MAKE/MODEL	HP	MPH
Lance PA32 RT-300	300	171	Archer PA 28-181 ('74 & '75)	180	127
Lance PA32-R-300	300	172	Challenger PA 28-180 & PA 28-180 B-G	180	127
Cherokee 6 PA 32-300 ('78-)	300	156	Warrior PA 28-161 II	160	126
Cherokee 6 PA 32-300 (-'77)	300	150	Warrior PA 28-161	160	125
Cherokee 6 PA 32-260 ('78)	260	151	Cherokee PA 28-160 & B	160	120
Cherokee 6 PA 32-260 (-'77)	260	145	Cherokee PA 28-160C	160	122
Comanche PA 24-400	400	200	Warrior PA 28-151	150	118
Comanche PA 24-260 B-C	260	174	Cherokee PA 28-150-C	150	118
Comanche PA 24-250	250	171	Cherokee PA 28-140	150	116
Comanche PA 24-180	180	145			
Dakota PA 28-236	235	149	ROCKWELL COMMANDER		
Cherokee PA 28-235 B-F (constant speed prop)	235	145	Lark 100L	180	115
Cherokee PA 28-235 B-F (fixed pitch prop)	235	144	Darter 100	150	108
Charger & Pathfinder PA 28-235	235	144	WING		
Arrow PA 28-200R IV	200	149	D-1 Derringer	320	192
Arrow PA 28-200R III	200	150			
Arrow PA 28-200R II	200	149	VARGA		
Arrow PA 28	200	148	Kachina ('80)	150	116
Arrow PA 28-180R	180	146	*without steps add 1 mph to handicap		
Archer PA 28-181 ('78-)	180	133			
Archer PA 28-181 ('76 & 77)	180	129			

DESIGNATED AIRPORT ON THE ROUTE

AIRPORTS

STATUTE MILES

P06	Laughlin, Nevada/Bullhead City, Arizona	
PVU	Provo Municipal, Provo, Utah	381.49
VEL	Vernal Municipal, Vernal, Utah	117.74 (fly-by only)
WRL	Worland Municipal, Worland, Wyoming	255.82
PHP	Philip, Philip, South Dakota	315.27
DTL	Detroit Lakes, Detroit Lakes, Minnesota	336.40
ARV	Minocqua-Woodruff, Noble F. Lee Memorial Field Woodruff, Wisconsin	300.14
BRL	Burlington Municipal, Burlington, Iowa	361.47
BPK	Mountain Home, Baxter County Regional, Mountain Home, Arkansas	313.48
HSV	Huntsville International, Carl T. Jones Field Huntsville, Alabama	341.89

Total Statute Miles2,723.70

EVENTS

Inspection Opens	June 22	06:00 PDT
Arrival Deadline	June 22	17:00 PDT
Aircraft Inspection Closes	June 23	10:00 PDT
Take-Off Banquet - MANDATORY	June 23	18:30 PDT
First Time Racers Clinic	June 24	08:00 PDT
Contestant Briefing - MANDATORY	June 24	10:00 PDT
Safety Seminar - MANDATORY	June 24	13:30 PDT
Annual Air Race Classic Meeting	June 24	14:30 PDT
Take-Off Breakfast	June 25	06:00 PDT
Contestant Briefing - MANDATORY	June 25	06:00 PDT
Take-Off	June 25	08:00 MST
Finish Deadline	June 28	17:00 CDT
Contestant Debriefing - MANDATORY	June 30	09:00 CDT
Awards Banquet - MANDATORY	June 30	18:30 CDT

**LIKE THE
EDGEWATER
WOMEN IN
AVIATION
ARE RISING
TO NEW
HEIGHTS**



EDGEWATER
HOTEL AND CASINO

P.O. BOX 642 • 2020 S. CASINO DR. • LAUGHLIN, NV 89029 • ANOTHER CIRCUS CIRCUS ENTERPRISE
For Hotel Reservations Call **702-298-2453** • Outside Nevada **800-67-RIVER**



**YOUR FULL SERVICE REAL ESTATE BROKERAGE IN
NEEDLES... THE FASTEST GROWING CITY ON
CALIFORNIA'S EAST COAST!**

*GOOD LUCK
TOOKIE!!*

JK



244 "G" Street — P.O. Box 946
Needles, California 92363

1-800-345-4665, Ext. 946A

Bus. (619) 326-3819
FAX (619) 326-4744



TOOKIE HENSLEY
Mohave Valley, AZ

CORRINE KEZA
Devore, CA



ANNE HONER
Wickford, RI

BESS WALKER
Newport, RI

CLASSIC 1
Cessna 172N 160 hp

Sponsored by:
Sam's Town Gold River
Laughlin, Nevada
(Hotel and Gambling Hall)

Tookie flying her twelfth Classic, with Commercial, Flight Instructor Airplane/Instrument, Advanced and Instrument Ground is self-employed Flight Instructor at Needles, CA. Married to Don (who still thinks he is retired and a pilot — one of the best, wife says), they meet at the race terminus to start their vacation. Two children — five grandchildren (delight of their lives) — Tookie enjoys many sports, promoting general aviation and encouraging pilots to race. A member of London Bridge 99s.

Flying her third Classic, Cori has 275 hours. She is a Registered Nurse in the Intensive Care Unit at St. Bernadine's Hospital. During her "off hours" she helps self-employed husband Wally coordinate fishing trips to La Paz, Mexico. A member of the Inland 99s, Cori races because of the fellowship and fun.

CLASSIC 2
Cessna 172N 160 hp

Anne with Instrument, Basic Ground and 555.8 hours will be flying her second Classic. She is an Executive Director for Neighborhood Furniture Bank, which is a non-profit organization that provides furniture to the needy. Husband Mike is a quality assurance engineer and pilot. One of their two children flies helicopters from *USS America* in the Persian Gulf. Why race? Ann says "It certainly isn't to win!" Who knows? This just might be your year!

Bess will be flying her first Classic and a warm welcome to you. Owner/manager of Walker Interiors, she designs and manufactures window treatments. Husband Luke, student pilot, does restoration work and restored a 1948 Piper Vagabond in which Bess acquired some of her 200 hours. Eastern New England 99s claim Anne and Bess.

*We wish to express a very special thanks
to the Stop Chairman, Timers, Ground Crews
and Judges. Without volunteering your time
and talent, the race could not be ...
Deeply appreciated by the contestants.*



RITA BUHL
Long Beach, CA

MARY JO VOLK
Pasadena, CA

CLASSIC 3
Cessna 172 H 145 hp

A Mother-Daughter Team.

Rita will be flying her seventh Classic and Mary Jo her sixth Classic and both members of Long Beach 99s.

Rita with Instrument and 1822 hours career experience is chief cook and bottle washer. With nine children (three pilots) and eight grandchildren, one can see the pursuit of an alternate career might be impossible. Her husband, Thomas, is a Medical Doctor specializing in Thoracic Surgery and also a pilot.

Wonder why Mary Jo has flown one less race than Mother? Well, she asked sis to sub while she started her own family — the most beautiful boy in the world — that's a direct feeling from Mother and Attorney husband, David. Mary Jo looks forward to adding to her 618 hours and spending time with Mother.

Lane Wallace, from Bloomington, MN, an aviation writer, will be flying with Esther Lowry (Classic 4) doing an article for AOPA Pilot Magazine on the Air Race Classic. Lane, with 200 hours, owns a 1946 Cessna 120 - is now restoring a Stearman and is a volunteer on the Tsunami and Pond Racer unlimited air racing crews.



ESTHER LOWRY
Dillard, GA



GENIE RAE O'KELLEY
Alcoa, TN

CLASSIC 4
Cessna 182J 230 hp

The 14th Classic for Esther — "how could I not race. It has become so much a part of my life." She gets enjoyment from helping other racers, new and old, have more fun racing — Deep South 99s — 5000+ hours — Commercial, Instrument, Flight Instructor Airplane. Carl, retired, travels with Esther, a restaurant consultant, to many countries in this work with International Executive Service Corporation.

Genie Rae, Flight and Ground Instructor for Volunteer Aviation with 9000+ hours, Commercial, single/multi land, Flight Instructor Airplane/Instrument, Advance and Instrument Ground Instructor — flying 13th Classic — Tennessee 99s. Pilot husband, G. Davis, a research Chemist, and Genie Rae have two children and three grandchildren.

This team is fortunate to have as their passenger, Eva Oster. A member of the Israel Section 99s and 127 hours, Eva teaches English and a free-lance instructor of horseback riding in Ramat-Gan. Two children will see Eva off to the U.S. ... a big welcome to your first Classic.



EVA OSTER

STRATEGIC PLANNING
ECONOMIC DEVELOPMENT
FEDERAL & STATE RELATIONS

J.E. (ED) MITCHELL, JR.
President

205 / 533-5510
FAX 205 / 536-9223

MITCHELL & MITCHELL, inc.

Post Office Box 524 □ Huntsville, Alabama 35804
200 Clinton Avenue, W. □ Huntsville, Alabama 35801

**CLASSIC 5
(Scratched)**



JANET YODER
Wichita, KS

KAREN TUCKER
Wichita, KS

**CLASSIC 6
Cessna 177 RG 200 hp**

A team that is DETERMINED to finish what they start — the race!!

Flying her tenth Classic, Janet has acquired 1340 hours with Commercial, single/multi land and Instrument. A Certified Registered Nurse Anesthetist, she is employed by Pain, Anesthesia & Critical Care Services. Pilot husband, Donald, is a Podiatrist where Janet also works as his office manager. They enjoy flying their 1941 Stearman (and buying Stearman parts). They have just received all of the approvals needed for a private airport on their farm — and farming is another enjoyment.

Karen is STARTING her third Classic with Commercial, single/multi land, Instrument and Basic Ground Instructor acquiring 600 hours. Retired teacher of Aeronautics and Home Economics at both University and High School levels gives some extra time to attend the 5000 square foot vegetable garden. She and husband, Sydney, Manager Flight Safety International, Citation Division, love flying their 1939 Tigermoth and have two children. Karen and Janet are members of Kansas 99s.



**We're In
Business To Help
Your Business.**

At Smart & Final, we've been serving the business shopper for over 120 years. We offer over 10,000 quality products. Wholesale groceries, janitorial items, paper goods and more. All at low, money-saving prices. And, unlike the warehouse clubs, you pay no membership fee. Check out the store that means business. Stop by your local Smart & Final today.

SMART & FINAL

FOOD SERVICE, WHOLESALE GROCERIES AND JANITORIAL SUPPLIES.
Where Small Business Shops and Saves.

Check your directory for the store nearest you.

Sponsoring Classic 21

SPECIAL THANKS

Sheraton Inn
Huntsville Airport

Huntsville/Madison County
Convention & Visitors Bureau

Buffalo Rock Pepsi-Cola Co.

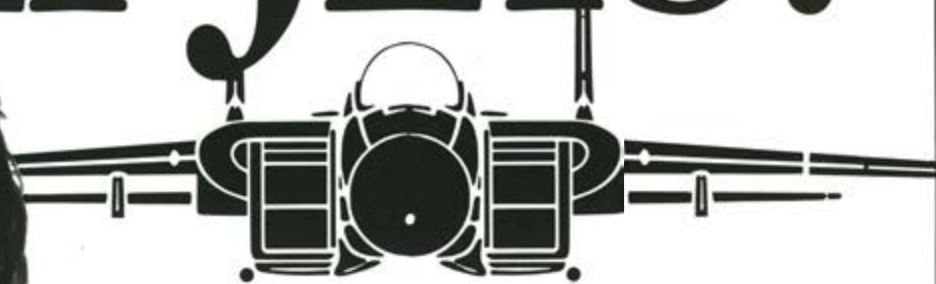
Teledyne Battery Products

Morgan Stanford Aviation

Huntsville Madison County Airport Authority

Huntsville Aviation

WANT TO FLY JETS?



Set your flight course for **AVIATION CHALLENGE®** in Huntsville, Alabama for a jet jockey adventure that will have your head in the clouds.

- Train on advanced simulators.
- "Land" on a carrier!
- Sharpen navigation skills!
- Slide down the wire and splash down for a wet rescue!
- Kick the tires on a real SR-71 Blackbird!

From the people who brought the nation **U.S. Space Camp®** now comes **Aviation Challenge.**

(Five days for kids. Three days for adults.) Book space today and see if you're TopGun material.

1-800-63-SPACE

Ask the operator about registration details.



U.S. Space & Rocket Center

U.S. SPACE CAMP • NASA VISITOR CENTER



SANDRA FISHER
Lake Havasu City, AZ

GAIL ANN SWAIN
Parker, AZ



GRETCHEN JAHN
Eastlake, CO

CHRISTINA BENTLEY
Littleton, CO

CLASSIC 7
Piper PA 28-236 235 hp

The second Classic for Sandy. Pilot and secretary for Oto-Med, Inc. (Otology medical supply business), she has acquired 671.5 hours with single/multi land, single sea, Flight Instructor. Chairman of the London Bridge/Havasu 99s — certified scuba diver — husband Allen also pilot.

Commercial, Instrument, Flight Instructor Airplane — 700+ hours. Gail Ann is flying second Classic. A commercial pilot single land/sea and Flight Instructor for Paroair and president of Westward Equity and Securities Corp, she is married to "Corky", a pilot and owner of Westward Mobile Homes, Inc. and they have three children. London Bridge/Havasu 99s — member Baja Bush Pilots — skiing, fishing and hunting.



"Which way to the Air Race Classic?!"

CLASSIC 8
Piper PA 28-236 235 hp

Welcome to this team flying their first Classic! Chris, former Naval Officer, is currently a project manager in computer systems engineering employed by Martin Marietta Astronautics. Pilot husband, Ian, President (and Chief Salesman) for Holistic Systems, Inc. and they have two children, Kimberly 7, and Andrew 5. Colorado 99s — Commercial and Instrument — 648.5 hours, Chris says she is basically a recreational and fair weather pilot — racing provides purpose for improving flight planning and aircraft handling — however, Chris, let's keep the race in fair weather!

An independent Computer Consultant, Gretchen owns Conformation, Inc. and works with businesses and manufacturing companies to determine data processing needs. Currently Vice Chairman of the Colorado 99s, Commercial and Instrument and has acquired 650 hours. Husband, Karl, is a pilot and Computer Engineer ... racing is challenging, stimulating and lots of fun!

Best 
Little
Nail
House

Bullhead Square
2250 Hwy. 95
Bullhead City, AZ 86430

(602) 763-4050

Quick
Drywall

Drywall Taping ♦ Metal Stud Framing
Res. Lic. No. 51962
Comm. Lic. No. L10-077387

P.O. Box 5053 / Mohave Valley
Arizona ♦ 86440

TOMMY WATSON
(602) 768-3213

KING • NORTHSTAR • S-TEC
NARCO • IIMORROW • ICOM


Specializing in Avionics

(702) 646-0927
FAX (702) 646-2744
2772 N. Rancho Drive
Las Vegas, NV 89130-3311

Richard Clarke - General Manager
FAA CRS • VQSR557K



JOYCE HILCHIE
Boulder, CO

EDDIE WHISTLE
Wheat Ridge, CO



MARGARET RINGENBERG
Grabill, IN



LOIS FEIGENBAUM
Carbondale, IL

CLASSIC 9
Piper PA 24-180 180 hp

With 1000+ hours and Instrument, Eddie, a member of Colorado 99s, will be flying her fourth Classic. A self-employed travel agent, she and husband Paul, an Entrepreneur, have made two round the world trips and hold several world records for single engines. One of their four children is a pilot ... and four grandchildren.

The fourth should be the charm, says Joyce with 750 hours, Commercial, Instrument and Flight Instructor Airplane. A far cry from a dairy farm in Oklahoma, Joyce enjoys working with husband Doug in the international oil industry ... two children and two grandchildren. Joyce serves as Aerospace and Convention Chairman for the Colorado 99s.

CLASSIC 10
Piper PA 28-160C 160 hp

Margaret has flown all Classics — a racer from day one! She has added house wife to pilot as occupation — sure husband Morris, banker, enjoys that. One of two children is a pilot — five grandchildren. A WASP WWII Margaret with Commercial, single/multi land, Flight Instructor Airplane/Instrument and Multiengine has accumulated 38,000 hours. Indiana 99s — Margaret enlighten us on T.P.ed!

Lois, past President of International 99s, is making her first Classic. She is President of the "Bargain Factory, LTD." She and husband, Robert (president — Charmglow Industries, Inc.) have three children, one a pilot, and three grandchildren. Lois is a member of Cape Girardeau Area 99s — enjoys riding her Tennessee Walker — and we hope you enjoy our Classic!



Grand Teton, towering high above the timberline at 13,766 ft., is the highest peak in the Teton Range. Grand Teton overlooks Grand Teton National Park, Jackson Hole, Wyoming.



MARION P. JAYNE
Trophy Club, TX

PATRICIA KEEFER
Roanoke, TX



ELAINE ROEHRIG
Utica, NY

MAROLYN WILSON
Whitesboro, NY

CLASSIC 11
Cessna 182 RG 235 hp

Sponsored by:
Tailwinds Catalog of the Skies
Petaluma, California
(mail order)

Jet Air Service
Galesburg, Illinois

Chairman of Tailwinds Catalog, four grandchildren, two of four children are pilots — Marion has flown all the Classics and a member of Chicago 99s. Holds Airline Transport, single/multi land, Flight Instructor Airplane/Instrument and Multiengine. Marion races for the challenge of flying that perfect cross country race!

For 19 years Pat has been selling any and all blue computer stuff and hasn't been fired yet! — Employer IBM. Husband Kenneth, pilot, is a computer sales technician — with 400 hours and flying her fourth Classic, Pat likes racing because of being able to make "screaming" legal flybys — get up by 5am to wipe bugs or frost off the plane while wearing shorts and sandals and paying for the privilege. Pat, we don't understand how you make so much money in Jackpot!

A Mother/Daughter team!

CLASSIC 12
Piper PA 28-161 160 hp

Commercial, Flight Instructor Airplane/Instrument, Ground Instructor Advanced/Instrument — 11153.1 hours — brings Elaine to her fourth Classic. A career as Flight/Ground Instructor and currently managing military Aero Club. Charles, a pilot and retired Mechanical Engineer and Elaine have three children (one pilot) and six grandchildren.

Fourth Classic for Marolyn with 255 hours. Owner/manager of Holland Farms Dairy Bar and Bakery — Certified Aerobics Instructor — choreographer — daughters, Tricia and Emily are Marolyn's biggest fans, whether she is on stage or in the air.

Central New York 99s claims this team.



A Special Thanks to the following chapters:

- Bay Cities
- London Bridge/Havasu
- North Jersey
- Colorado
- Utah
- Wyoming

If you are an Above-the-Crowd kind of a person, and it looks like you are, call Sandra or Carmie for all your Real Estate needs! Best of Luck to All of the Air Race Classic!



TAKE A STEP ABOVE THE CROWD!

RE/MAX Caravan Realty
1104 Hwy. 95 - P.O. Box 2570
Bullhead City, Arizona 86430
(602) 754-2575 • 1-800-345-4665 ext. 54



JERRY CHRISTIAN
AIRCRAFT SALES, INC.

At the top of The AMR COMBS Tower Building, Memphis International Airport
2496 WINCHESTER, MEMPHIS, TENNESSEE 38116

SAFE FLYING

AND

HAPPY LANDINGS

TO ALL OF THE

AIR RACE CLASSIC

CONTESTANTS!

FAX 901-345-7174
901-345-7171



NORMA FUTTERMAN
Beverly Hills, CA



AILEEN PICKERING
Sherman Oaks, CA



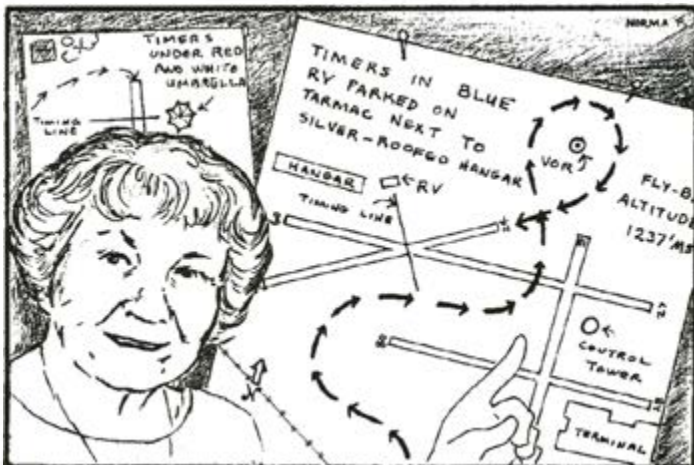
DOTTIE ANDERSON
Bluffton, OH

JEAN SLOAN
Lima, OH

CLASSIC 13
Beechcraft A36 285 hp

Started all Classics — but not necessarily completed all Classics — Norma with 3000+ hours has Commercial, single/multi land, single sea, Instrument, Commercial Glider and Basic Ground Instructor. Charles, retired Supermarket Operator and Norma have two children (Art, a pilot) and three grandchildren. Loves golf (game never improves), loves music and painting (accomplished in both), loves cats (one in every room and two outside), but especially loves those grandchildren!!

Aileen, flying her 12th Classic, took time off last year to fly in the World Vintage Air Rally from London to Brisbane, Australia. A realtor with King Realty, Aileen has Commercial, single land/sea with 2400+ hours, one child and two grandchildren. Aileen and Norma are members of the Los Angeles 99s.



"... and ... now, girls, after you make your 5th call at 2.5 miles out crossing the river at 2483' msl (left of the trestle), you may start your descent to fly-by altitude as soon as you pass over the white farmhouse (the one with green shutters), if you have the water tank in sight ... maintain 353° heading until you cross the railroad ... then just follow the diagram ... it's simple ..."

CLASSIC 14
Piper PA 28-181 180 hp

Sponsored by:
Mike Cameron - Cameron Packaging
Lima, Ohio
(Industrial Packaging)
Flying Service, Inc.
Bluffton, Ohio
(Fixed Base Operator)
Sloans Trucking
Lima, Ohio
(Over the Road Trucking)

Flying her 13th Classic — Dottie with 39,500+ hours — Commercial, FAA Examiner, single/multi land, Flight Instructor Airplane/Instrument/Multiengine and Advanced Ground Instructor has been a Flight Instructor at Bluffton Flying Service since 1948 — Flight Examiner since 1978. A member of the All Ohio 99s — she takes a "busman's holiday" to fly the race for the challenge — but most of all to renew friendships.

Jean with 550 hours manages Sloan Trucking Company for owner and pilot husband, Virgil — four children (one pilot) — two grandchildren. Flying her ninth Classic, Jean is member of All Ohio 99s.

On the Waterfront at the London Bridge

RAMADA
London Bridge Resort®

Lake Havasu City, Arizona



2 Swimming Pools • Jacuzzi • Tennis • Golf on Lighted Course
Complimentary Cocktail Hour • 50 Shops and Boutiques
2 Restaurants • Dixie Belle Paddlewheeler

1-800-624-7939 (USA)

1477 Queens Bay, Lake Havasu City, AZ 86403



DIANE SHAW
Cape May, NJ

NANCY FRAME
Rio Grande, NJ



"SUNNY" SCHIFFMAN
Palos Verdes, CA

SUSAN TARABETZ
San Jose, CA

CLASSIC 15
Piper PA 32-R-300 300 hp

Sponsored by:
Diane E. Shaw Insurance
Rio Grande, New Jersey
(mobile home insurance)
Packway Oil Service, Inc.
Rio Grande, New Jersey
(heating oil service)

After several years of Corporate and Commuter flying Diane says "I finally have my own plane" ... Now to fly her eighth Classic and enjoy many new sights — adding to the 3300 hours. Commercial, single/multi land and Instrument. Mobile home insurance business 25 years but definitely finds time to enjoy the two children and six grandchildren. Diane, is passing up the restaurants and losing 5 ... your goal again?

Nancy, enjoy your first Classic ... You are so right "a wonderful way to see the country," and the knowledge you will gain added to the 310 hours is unbelievable. Nancy manages the office of Parkway Oil Service owned by husband, Clifford, and herself — they have two children. Both are members of Garden State 99s.

CLASSIC 16
Cessna 182 P 230 hp

Sunny continues to teach those students using the Commercial, single/multi land, single sea, Flight Instructor Airplane/Instrument and Basic Ground Instructor at Torrance. Total of 8300 hours hails from Long Beach Chapter 99s. Aviation Consultant, "Pat", Sunny's husband, pilot of course, also one of the four children. Four Classics for Sunny — great to see our country other than TCA's & ARSAS.

Susan, a certified public accountant and owner/manager of Larson Pallet Manufacturing Company has three Classics tucked away. Member of San Joaquin Valley Chapter 99s — races for joy and challenge — What better way to see USA — there is one child for Raymond (who is self employed) and Susan. Almost forgot humorous experience in prior Classics "Not for printing."

*A very special thank you to
Frances Brown!*

Welcome Air Race Classic!

Best Wishes for Clear Skies & Tail Winds

From The Employees and Pilots of

Mohave Generating Station



G E N E R A L

AVIATION

U N D E R W R I T E R S

Aviation Specialists Since 1976

P.O. Box 669875
Marietta, Georgia 30066

425-2115
1-800-842-1729



**DON'T
FUEL
AROUND.**



CHOOSE POWERFUL CHEVRON AVIATION FUELS. Today's planes need fuels that are big on power. That's why so many pilots turn to livelier Chevron oil and fuels. Call us soon and get more out of your plane.

STEVENS OIL COMPANY

P.O. Box 326 608 Church St. Huntsville, AL

534-1657

Serving Limestone, Madison & Morgan Counties
232-5100 ♦ 534-1657 ♦ 355-0276
Oil and Lubricant Sales Manager - Dennis Curtis



MARGE THAYER
Mesa, AZ

RUBY SHELDON
Phoenix, AZ



CAROLYN LUNGER
Wilmington, DE

MARILYN ALDERMAN
Hockessin, DE

CLASSIC 17
Cessna 182 RG 235 hp

Sponsored by:
Ronald W. Thayer
Mesa, Arizona
(property management)
S.A.S. Executive Aviation, LTD
Mesa, Arizona
(complete FBO)

Marge showed true grit in 1970 when tiring of long business trips by car took to the air. A seasonal pilot with 2500 hours, Commercial, single/multi land, single sea and Instrument — Arizona Sundance Chapter 99 ... She serves as corporate pilot for the extensive Thayer business enterprises. With husband, Ron, their Cessna T-210 flights take them to Alaska, many parts of US and Mexico. Is that one child following Mom/Dad as a flying career?

Ruby, with a flying career such as yours how can racing be a challenge — 12,000+ hours, Commercial, single/multi land, single sea, Flight Instructor Airplane/Instrument, Commercial helicopter and Flight Instructor Instrument. A remote sensing pilot and technician for US geological survey, Ruby has flown extensively throughout North America from far Arctic to the Canal Zone in a variety of sophisticated Military and Civilian Aircraft. Phoenix 99s is the Chapter and this is the seventh Classic.

"God does not deduct from women's allotted time the hours spent flying the Air Race Classic."

CLASSIC 18
Aerospatiale Trinidad 250 hp

Great to have Marilyn and Caroline flying their first Classic!!

In 1627 hours, Marilyn has acquired Commercial, single/multi land and Instrument. Marilyn obtained her B.A. in Chemistry from Oberlin College, then to work for Hercules Inc. in the accounting department — there are two children for Marilyn and George, an accountant ... Marilyn, let us know the difference in car racing and airplane racing.

Caroline, with 165 hours, works for Winterthur Museum organizing annual steeplechase races held on Museum property. Husband, Brett, is self-employed and a pilot. Caroline, born in Britain, became a naturalized citizen of USA in 1990.

Thanks to:

*A. Custar Inc -
Electronics Div. Huntsville*

C. S. Haywood

Bob Wills

Bill Poole

Wayne Dugger

Richard Patton

Aviation Business Systems

*Alabama Department of
Aeronautics*

Executive Inn - Port of Madison



MARY CREASON
Grand Haven, MI

PHYLLIS WEBB
Grand Rapids, MI



ESTHER GRUPENHAGEN
Arroyo Grande, CA

MARDELL HASKINS
Riverside, CA

CLASSIC 19
American General AG5B 180 hp

Mary — Airline Transport, single/multi land, single sea, Flight Instructor Airplane/Instrument/Multiengine, Ground Instructor Advanced/Instrument — 9400 hours. Lake Michigan 99s — flying eighth Classic. Dentist husband, William, enjoys flying as well as three of their four children — as yet the six grandchildren are too young. Mary is retired from Bureau of Aeronautics as Assistant Deputy Director and formerly served Bureau as Editor of *Michigan Aviation*.

With 990 hours and Commercial — we welcome Phyllis to her first Classic. Serving the Butterworth Hospital for six years as Immunologist, she is now Chief of the Communicable Diseases Laboratory. Previously she served on teaching/research faculties of University of Notre Dame, University of Minnesota, University of Wisconsin in the fields of Immunology, Microbiology, and Laboratory Medicine. A member of Indiana Dunes 99s, Phyllis is working with youth and encouraging their entering the field of science.

CLASSIC 20
Cessna 310 D 520 hp

Sponsored by:
Park Hill Reflections
Dallastown, Pennsylvania
(antiques and collectables)

James Carey
Huntington Beach, California
(aviation)

Aero Tech Surveys
Riverside, California

G. K. C. on Main St.
Riverside, California

Flabob Airport
Riverside, California

Classic number two for Esther — Fullerton 99s — Captain of Swearingen Metroliner III for Wings West Airlines — American Eagle from San Luis Obispo. Airline Transport, single/multi land, single sea, Flight Instructor Airplane/Instruments, Jet (type rated) SD 3, SW 4 and Advanced/Instrument Ground Instructor — 15,000 hours. Two grandchildren and one of three children is a pilot.

Flying her third Classic, Marde Haskins is a heavy equipment operator — member of Inland California 99s with 950 hours and Instrument. Pilot husband, Fred, and Marde Haskins are parents of eight children and nineteen grandchildren.

**CONGRATULATIONS
& SAFE FLYING
from
HUNTSVILLE
COMPOSITE SQUADRON**



FIFTY YEARS OF SERVICE

Call (205) 837-1274

*A Big Thank You
to
Joan Dugger*



SUSAN CHAPPLE
Santa Barbara, CA

CHRIS EMMONS
Santa Barbara, CA

CLASSIC 21
Beechcraft F33 A 285 hp

Sponsored by:
Smart and Final Stores
Santa Barbara, California
(food chain)

Plastic Surgery and Hand Surgery
Medical Clinic of Santa Barbara

Chris — 540 hours — Instrument and Helicopter — second Classic — plus experienced stockbroker, investment executive, television/radio host, and a member of Board of Directors of the Santa Barbara Chamber Orchestra. She accompanies husband, Dr. Robert Emmons, CEO and Chairman of Smart and Final Stores on many overseas trips. Sorry, Ryan, won't be able to fly Classic this year! Chris please note the fly-bys and barns ...

Susan, housewife and mother, has Commercial, multi land, Instrument and has acquired 890 hours. Pilot husband, John, Plastic Surgeon and Susan have two daughters. "I love air racing for the sheer challenge of doing everything right to come out on top of the formidable competition." Other interests include weight training, scuba diving, fishing and traveling.

Both are members of Santa Barbara 99s.

Our Appreciation To:
Smart & Final
Riverside Ballet Arts
Tire and Lube Center
Mohave Generating Station
Betty Hunter, Inc., Realtor
Copy All
Shebles Riviera Aviation
Aviation Promotions



SHEILA BECK
Ft. Worth, TX

JEANETTE HACKLER
Arlington, TX

CLASSIC 22
Cessna 172N 160 hp

First in the Air Race Classic for this team. In that 535 hours Sheila has acquired her Instrument Rating. A hard working Interior Decorator, Sheila gutted the interior of a 30,000 sq.-ft. of a private school building and made a "New" school in seven weeks. "Self" is her employer — also, does commissioned art. Insurance is Richard's occupation — one son of four children is a pilot — two grandchildren. "I'm glad I found a relationship with Jesus — the most important thing that has happened to me."

Jeanette and Sheila are members of Fort Worth 99s — Jeanette is a private secretary with experience in areas of legal, insurance, sales and engineering — is a certification analyst for Aerospatiale Helicopter Corp. — involving FAA Certification of helicopters with Canadian certification authority. Dennis, a pilot, and Jeanette have one child. Correct — racing is a challenge — Enjoy and Learn.



SPECIALIZING IN CORPORATE INTERIORS SINCE 1960
WORKMANSHIP AND DESIGN BY CRAFTSMEN
LICENSED A&P ON STAFF
FAA CERTIFIED REPAIR STATION No. LG3R656L

602-832-1330

5047 ROADRUNNER DR. / FALCON FIELD / MESA, AZ 85205
CABINET SHOP ON PREMISES

Classic 23
(Scratched)



SUZY HENNEY
Santa Barbara, CA

JO ANN HANKIN
Calabasas, CA

CLASSIC 24
Piper PA 28-236 235 hp

Suzy, with Instrument and 850 hours is flying her third Classic. A skydiver with two jumps, she is currently working toward her doctorate in Institutional management. Self-employed as a Real Estate Developer, developing lower income property with emphasis on marketing to women investors, Suzy has two children.

Jo Ann — with commercial, single/multi land and Instrument has 550 hours. We are glad you joined Suzy for another race.

Compliments of

**Advertising Committee
of the
Huntsville Banks**

AmSouth Bank
Central Bank
Colonial Bank

First Alabama Bank
SouthTrust Bank

**Welcome
Air Race Pilots**

Executive Inn Airport
and
Port of Madison Restaurant
Specializing in
Mid West Beef and Fresh Seafood
205-772-7170

9035 Hwy. 20 West, Madison, AL
Located 1 mile from airport.



**Port of
MADISON**
A Great Restaurant
in the
Executive Inn Airport



EVELYN BUSS
Marina Del Rey, CA

DIANE WINN
Palm Springs, CA

CLASSIC 25
Beechcraft A36 285 hp

A first Classic for Evelyn and Diane!
Welcome Evelyn to the Classic. With Instrument and 830 hours, Evelyn's occupation is homemaker. We know boyfriend, Ronald, Mortgage Banker, will be expecting a call each night to hear of your progress.

And a big welcome to Diane, who flies as Captain on British Aerospace Jetstream for Westair Airlines (United Express), and based in Los Angeles. Served as Captain on EMB 110 and First Officer SD 360. Member of Los Angeles 99s — Airline Transport, single/multi land, Flight Instructor Airplane/Instrument/Multiengine — 5500 hours.



"I didn't do it, I didn't do it! What is it I didn't do?"



JENNY WRIGHT
Santa Barbara, CA

JOAN STEINBERGER
Goleta, CA

CLASSIC 26
Piper PA 28-236 235 hp

Sponsored by:
Jenny — the husband
Joan — herself

Jenny — Instrument with 1378 hours is self-employed in family real estate business which replaces Physical Therapist. A Real Estate Investor, Bill, also a pilot, and Jenny have four children and six grandchildren. Her hobbies include traveling and sculpting.

Joan — 3125 hours with Commercial and Instrument is still "doing parts" for Stratman Aero and working as a full-time mechanic. Husband, Norm, retired and Joan have two children (one pilot) and two grandchildren.

BOTH flying sixth Classic — BOTH members of Santa Barbara 99s — BOTH think this is their year to win the big one!

Sincere Thanks To:

Mitchell & Mitchell, Inc.

Southern Museum of Flight

Baja Fishing

Red Barron Aviation

POR/DEL - Deloris Guthie

Don Laughlin's Riverside Hotel and Casino

Edgewater Hotel & Casino

Redwood Empire Ice Arena



CAROLYN PILAAR
Greenville, SC

GARY WHEELER
Greenville, SC



ROYCE CLIFFORD
Leucadia, CA



LORRIE BLECH
Beverly Hills, CA

CLASSIC 27
Piper PA 28-140 150 hp

Carolyn — flying 14th Classic — 20,000+ hours — Airline Transport, single/multi land, single/multi sea, Flight Instructor Airplane/Instrument/Multiengine, Commercial Helicopter, Ground Instructor Advanced/Instrument — Foothills 99s. A Flight Engineer for Pan American, Carolyn also operates her own Flight Academy. She loves precision competition and Argentina was the place this past year.

Gary — Foothills 99s — flying 12th Classic — 1600 hours-single/multi land, single sea, Instrument, Flight Instructor Airplane (Congratulations you are right — the skies may never be safe again!) Night Charge Nurse in the recovery room Unit and NOW as a part-time Flight Instructor. So why does she race? "When you find yourself chasing your tail — it's time to find another outlet!!"

CLASSIC 28
Beechcraft C24R 200 hp

Welcome to your first Classic, Royce — A Physician and Surgeon in private practice, specializing in ear, nose and throat, head and neck, facial plastic and reconstructive surgery, Royce has single/multi land, Instrument with 300 hours. Member of Mission Bay 99s. Husband, Brendon, is an Orthopedic Surgeon and a pilot.

Lorrie — 11th Classic — Commercial, single/multi land, single sea, Instrument, Flight Instructor Airplane/Multiengine 9000+ hours — San Fernando Valley 99s. She is employed by Danforth Aviation.



772-5840

THE ULTIMATE GOLF PRACTICE AND LEARNING FACILITY



- Lighted for Night Practice
- 65 Grass Tees
- 20 Covered Tees (Heated for Winter)
- Chipping, Putting & Sand Practice
- PGA Teaching Professional
- Home On The Range Restaurant
- Computerized Golf Analysis



401 Lime Quarry Rd. Madison, AL

OPEN
Mon.-Sat.
10am.-9pm.
Sun. 1-9pm.



DEBORAH DOWNEY
Chesterland, OH

MICHELLE HOVANEK
Willoughby Hills, OH



MARTIE PEARCE
Tempe, AZ

SHIRLEY ROGERS
Phoenix, AZ

CLASSIC 29
Piper PA 28-180 180 hp

Sponsored by
VIP Pet Center/Michelle's Grooming
Mayfield Heights, Ohio
(pet shop)

Downey and Associates, Inc.
Chesterland, Ohio
(general contractor)

Lake Erie 99s bring us this team on their first Classic! Michelle and husband, Mark, own and operate a pet shop, Michelle's Grooming, Inc. and they have one child. Being head of the grooming department gives Michelle the opportunity on fair weather days to reschedule "hair appoints" and take to flying. She enjoys scuba diving, grooming dogs and camping ... with Commercial and Instrument, 366 hours, looks forward to the experience and challenge of a race.

A Clinical Nurse Specialist for the Department of Neurology and Neurosurgery in the Cleveland VA Medical Center, Debbie has 250 hours. Husband, Ed, is an Architectural Engineer and they have two children.



CLASSIC 30
Cessna 172N 160 hp

Sponsored by:
Falcon Fuels Exxon
Mesa, Arizona
(Falcon Field Airport fuel service)

Flying her eleventh Classic, Martie is a retired Flight/Ground Instructor and teacher from Arizona State University. With Commercial, single/multi land, single/multi sea, Flight Instructor Airplane/Instrument/ Multiengine, Glider Instructor, Advanced/Instrument Ground Instructor has acquired 4970 hours. Member of the Phoenix 99s, Martie races to improve proficiency.

With Instrument and 500 hours, Shirley has always wanted to fly a race. When asked by Martie, she was delighted with the opportunity and ready to go! Both Shirley and husband Robert are retired. They have one child and two grandchildren.

CONGRATULATIONS
from



Flight Instruction
Aircraft Rental
at
Huntsville International
Airport



LUCY YOUNG
Smyra, GA

SUSAN SHROPSHIRE
Athens, GA

CLASSIC 31
Mooney M20C 180 hp

First Classic for Lucy and Susan.

Lucy — Airline Transport, single/multi land, Flight Engineer, Flight Instructor Airplane/Instruments/Multiengine, Jet (type rated) DC 9 — 6500 hours. She flies as 737 First Officer for USAIR and previously flew TA-4 Skyhawk Jets in the US Navy. Carrier qualified on *USS Lexington* — former Flight Test pilot for FAA — currently a DC-9 Aircraft Commander in the Naval Air Reserve and two cargo missions to Saudi Arabia for operation Desert Shield. And now to race for ADVENTURE!

Susan, employed by Bulldog Pilots, Inc. at the University of Georgia to fly co-pilot in a Cessna 421. Lewis, pilot husband, is president of Motel Enterprise and they have one child. Commercial, single/multi land, Flight Instructor Airplane, Glider Commercial — 1980 hours — Susan enjoys gliders (owns a Taifun 173 motorglider).

Both members of North Georgia 99s.

Thanks To:

SouthTrust Bank

Montgomery Aviation

U S Space & Rocket Center

Stevens Oil Company

Cotton Pickin' Antiques

*Advertising Committee of
Huntsville Banks*

*West Coast Quality
Aircraft Interiors*

Classic 32
(Scratched)



**SouthTrust pays
more than lip service
to service.**



At SouthTrust Bank, we don't just talk about service. We put our money where our mouth is. If a customer gets less than our best, we'll pay you for your inconvenience. Come in and ask us for details.

If you don't have a SouthTrust account, it just might be worth your while to open one. Because at SouthTrust, service is more than just talk. It's guaranteed.

**SouthTrust
Bank**

Member FDIC

© 1989 SouthTrust Corporation



ROSE LEPORE
Houston, TX

CATHY WAPPLER
Katy, TX



KATHY WALTON
Clearlake, CA

JOYCE WELLS
Larkspur, CA

CLASSIC 33
Beechcraft A 36 285 hp

Cathy's second Classic. With 380 hours and Instrument, is a teacher of English to eighth graders at the Katy Independent School District. A member of Houston 99s, she and pilot husband, Mike, have two children. There will be time zone changes in this race, too, Cathy — beware!

Third Classic for Rose and 218 hours. She works for American Medical International Heights Hospital as Materials Manager. Bill, husband/pilot/stockbroker, and Rose have seven children and six grandchildren. Houston 99s — hobbies include looking for old books and flying her Mooney.

CLASSIC 34
Cessna 182Q 230 hp

With Commercial, Instrument, 2450 hours, Joyce has flown all Classics. Fifteen years as school nurse in the Reed Union School District and married to Hal, a pilot and retired manufacturer's representative. They have four children and nine grandchildren. Joyce serves on the International Board of Directors Ninety Nines and a member of the Bay Cities Chapter ... "increasing my aviation skills, knowledge of our country geographically as well as its people," says Joyce.

A Home Economics Teacher in the Konocti Unified School District — plus Leadership Class, and Student Activities Director. Kathy is owner of 'fabric and things' and Snack Express (catering truck business). Flying sixth Classic — 385 hours — Clear Lake 99s — loves to cruise in former Navy lifeboat at 7 mph — enjoys trap shooting ... racing provides opportunity to meet people from all walks of life in rural and urban areas of America.

Fly! Race! Win!

with

Brackett Air

Filters



LAKE HAVASU 99'S

GOOD GAIL & LUCK SANDY

CLASSIC #7

FACTORY AUTO PARTS
LAKE HAVASU CITY, AZ



JOYCE FRENCH
REAL ESTATE BROKER

OFFICE (602) 851-2466
RESIDENCE 851-2202
332 HIGHWAY 72 ■ PO BOX M
BOUSE, AZ 85325

EVANS REALTY

Box 278
BOUSE, ARIZONA 85325
BUS: (602) 851-2275
RES: (602) 851-2221
DIANA EVANS, BROKER



Best Food
In La Paz County

Gingers Restaurant

*Home Of The
Great Desert Rabbideer*

Located in the heart of
Beautiful Downtown Bouse, Arizona
on State Highway 72



GEORGE'S Ocotillo Lodge Inc.

BOUSE, ARIZONA
PH. 851-2219

COCKTAILS - FOOD - BEER
MOTEL - R.V. PARK - PACKAGE
LAUNDRY - BUTANE
OVERNITE PARKING

(602) 851-2509

UPTON REAL ESTATE

Greg Upton
Broker

P.O. Box 206
Bouse, Arizona 85325

DIAMOND SETTING ★ CUSTOM JEWELRY ★ GOLD REPAIRS



JAMES L. SMITH JEWELRY

"Your Diamond Store"

P.O. Box Y
Corner of Hwy. 72 & Main St.
BOUSE, AZ 85325

602-851-2287

Printed Circuit Board
Layout & Design

Specializing in
R. F. Design



P. O. Box 177
County Rd. 42E @ Hwy. 72
Bouse, Arizona 85325

Deloris Guthrie
(602) 851-2586

FAIR WEATHER FLYING FROM ...

BOUSE, AZ.

BULLHEAD
90 sm

PHX 120 sm

33° 52' N LONG
113° 56' W LAT



ALICE MONROE
Glade Park, CO



PEGGY HERNDON
Huntsville, TX



ROSALIE HOPE
Geyserville, CA

KATHLEEN BAVUSO
Santa Rosa, CA

CLASSIC 35
Cessna 175 180 hp

Sponsored by:
Air Vista, Inc.
Glade Park, Colorado
(aero photo)

Precision Aircraft Maintenance, Inc.
Mack, Colorado

Western Colorado Antique/Classic Airplane Club
Grand Junction, Colorado

Dr. Robert Warriner, III
Southeast Texas Hyperbaric Medicine Center
Conroe, Texas

Dr. Don Osborne
Southeast Texas Anesthesia
Conroe, Texas

Welcome to your first Classic, Alice and Peggy.

Alice, Registered Nurse, has twenty-seven years of experience in several nursing specialties. High Country 99s — 900 hours — five children (one pilot) — one grandchild. Alice recently initiated a Flying Nurse service and hopes to extend this service to more physicians in near future. Pilot husband, Daryl, is a self-employed Ice Manufacturer.

A Certified Registered Nurse Anesthetist at several county hospitals, Peggy has used her flying skills to do free-lance anesthesia throughout Texas. Learning aerial photography — High Country 99s — 323 hours — two children — two grandchildren.



CLASSIC 36
Cessna 182 D 230 hp

A first Classic for this team and a hearty welcome. Rosalie, owner/Innkeeper with pilot husband Robert, of two bed and breakfast inns ... five children and ten grandchildren. Formerly operated a catering business and taught in secondary school. A member of Santa Rosa 99s — 192.4 hours — enjoys cooking, outdoors sports, and a real interest in historic preservations.

Kathleen with Commercial, Flight Instructor Airplane, Advanced/Instrument Ground Instructor has acquired 500 hours. Employed by Dragonfly Aviation as a flight and ground instructor, she learned to fly after three daughters were grown — two grandchildren — looking forward to the experience.

Janet Yoder

Pat Arnold

THANK YOU

FOR YOUR CONTRIBUTION
TO THE AIR RACE CLASSIC!

Marian Prohett

Broneta Evans

Ken Mountain

Dorothy Niekamp



NANCY TOON
Atlanta, GA

JEAN DUKE
Atlanta, GA



BLISS KNIGHT
Spanish Fork, UT

VALORA CRANDALL
Springville, UT

CLASSIC 37
Cessna 182 Q 230 hp

Jean's second Classic with 530 hours. Homemaker/wife, five children — husband Paul is in Real Estate — six grandchildren — North Georgia 99s — already involved and looking forward to the 1996 Olympics in Atlanta.

With Airline Transport, single/multi land, Flight Instructor Airplane/Instrument/Multiengine, Advanced and Instrument Ground, Nancy has acquired 2500+ hours. Presently she teaches multi engine, instrument, commercial at PDK Flight Academy at Peachtree Dekalb Airport. Ralph, real estate developer, and Nancy have three children and four grandchildren. North Georgia 99s — races sailboats — competitive tennis — plays guitar — still has time to maintain two aircraft.

CLASSIC 38
Waco Classic YMF 275 hp

Sponsored by:
John Knight
Provo, Utah
(various oil, ranching, trucking, farming, environmental)

Ray Crandall
Springville, Utah
(steel fabrication company)

The Classic welcomes Bliss and Valora.

Bliss — 14000 hours — Airline Transport, Flight Examiner, single/multi land, single sea, Flight Instructor Airplane/Instrument/Multiengine, Commercial Instructor Glider, Advanced/Instrument Ground Instructor — is First Officer, Lockheed 1011, Delta Airlines. Pilot husband, John, businessman/entrepreneur and Bliss have four children and five grandchildren.

Surgical scrub nurse, Valora is an assistant to four Orthopedic Surgeons. Husband, Ray, owner/manager of a steel fabrication business and also pilot — three children and delighted grandparents of two boys.

In Appreciation to:

**Federal Aviation
Administration**

Flight Service Stations

**Federal Communication
Commission**



"Day late and a dollar short for the Provo page."

JAMES MATHIS,
Airport Manager



BARBARA J. MARTIN
San Antonio, TX

DIANE H. MULLINS
Bandera, TX



FRANCINE RIECH
Lehi, UT

DOT STRATE
Sandy, UT

CLASSIC 39
Navion A 225 hp

Sponsored by:
Balloon Safaris of Texas
Bandera, Texas
(sightseeing)

Welcome to Diane and B. J. — first Classic — both hail from San Antonio 99s.

Diane with Commercial, single/multi land, Flight Instructor Airplane/Instrument, Commercial Hot Air Balloon — 1020 hours. Owner/chief pilot of Balloon Safaris of Texas, Inc. and Geologist — husband Bob, pharmacist and pilot. Diane says "racing hones my skills and makes me a better pilot."

B. J. races for fun, adventure and to "find out what I don't know" ... 226.5 hours. PT Telemarketer and clerk/scheduler at Flight School where she is currently training for Commercial and Instrument and has worked as printer, graphic designer, editor, publishing coordinator. One of two children is a pilot.

CLASSIC 40
Piper PA 28 - 200 R 200 hp

Happy to have you in the Classic!
Dot — with Instrument and 400.4 hours ... Business Management Consultant for United Western Inc. ... four children ... love and obsession for flying ... lover of adventure ... "life is too short not to fill it with glorious people, places and things to see."

Francine races for the thrill — challenge — to meet people — see the country. Instrument with 350 hours, she is a Highway Designer for the Utah Department of Transportation. William, self-employed Contractor and pilot, and they have three children and one grandchild.

First Classic for both — active members of Utah 99s.



**INLAND AERIAL
SURVEYS, INC.**

5826 Magnolia Avenue
Riverside, California 92506

(714) 683-3248

PEGGY J. ZOPF - PRESIDENT

Home of Riverside Ballet Theatre

**RIVERSIDE
BALLET
ARTS**

*Known Internationally For Its
Professional Instruction*



GLENDA CARHART HENSLEY
DIRECTOR

686-0226

3840 LEMON ST. RIVERSIDE

(619) 326-5263



Paradice Aviation

NEEDLES AIRPORT
AIRCRAFT RENTALS
FUEL • MAINTENANCE

P.O. BOX 784
NEEDLES, CALIFORNIA 92363

GLENN & DEB SIMS
Owners



PAULINE GLASSON
Corpus Christi, TX

BARBARA LEWIS
Corpus Christi, TX

CLASSIC 41
Cessna 172N 160 hp

"Never a dull moment" is Pauline's life motto — what with her flying, Commercial, single/multi land, single sea, Glider, Flight Instructor Airplane/Instrument/Multiengine, Advanced/Instrument Ground Instructor — and over 40,000 hours, still has time to "Mother" students as well as orphan animals. Off to 15th Classic, husband Claude, retired aerial photographer and pipeline patroller, and students welcome this annual reprieve.

Barbara — fifth Classic and 300 hours. Neither Joe, a Pathologist, nor four children and six grandchildren are pilots. "My bags are packed early in spring — just in case Pauline asks — and the fly-bys are so exciting — not sure whether that comes from having the airport in sight or the high speed low approach."

Tip of Texas 99s claim this team.



SIENNA LEON
Key West, FL

HELEN SWALLOW
Key West, FL

CLASSIC 42
Cessna 172 M 180 hp

Welcome to your first Classic, Helen and Sienna! May there be many to come! What fun you will have and the places you will go.

Twenty years of delivering babies as a certified nurse midwife, Helen is married to an obstetrician/gynecologist and pilot, W. J. Since childhood, the desire to fly has been Helen's goal — so a couple of years ago, her dream came true and now has Instrument with 464 hours. She uses her plane to commute to offices up and down the Florida Keys. Helen and W. J. have two children.

Sienna opened her own architectural practice just two years ago — married to Leonard, land use planner — 190 hours — and looking forward to testing racing skills.

Helen and Sienna are members of Southeast Section 99s.

Golden Banner Press, Inc.

1248 South Padre Island Drive
Corpus Christi, Texas 78416

512 • 854 • 1933

San Antonio

512 • 699 • 8404

FAX

512 • 854-2064



GOLDEN BANNER PRESS, INC.

when it comes
to color ...



Many Thanks To:

Artex

Foxtrot Products

Madison Golf Center

*Huntsville - Madison County
Airport Authority*

General Aviation Underwriters

Cowell Aviation

Factory Auto Parts

Greenbriar Bar-B-Que

WINDROCK AVIATION, INC.



Maintenance Canyon Tours
Flight Instruction Custom Charters

(602) 754-4649

P.O. Box 3125
Grand Canon, AZ 86023
1-800-24-ROCKY

P.O. Box 649
Bullhead City, AZ 86430
1-800-874-CANYON

Tod Beagle - Director of Marketing



**THE LUBE RACK
& TIRE SHOP**

**1 Stop
Auto Service**

(602) 758-4422

Rod Bowles - Bud King

1712 W. Hwy. 95
P.O. Box 206
Bullhead City, AZ 86442

**BUSINESS
SYSTEMS WEST**

*BOOKKEEPING SERVICES
INCOME TAX PREPARATION
CONSULTANTS*

*BUSINESS ORGANIZATION,
MANAGEMENT
& COMPUTER SYSTEMS*

JIM C. MANUEL - Enrolled Agent

(602) 768-9123

P.O. Box 9567
5287 Hwy. 95, Glendale Square
Ft. Mojave, AZ 86427



Commercial ▪ Weddings
Studio ▪ Portrait
Boudoir ▪ B&W Lab

**Rich & Karman De Prez
Owners/Photographers**

(602) 754-2727

Post Office Box 28
1118 Highway 95
Bullhead City, AZ 86430



Brenda K's

*Contemporary Apparel
Accessories and Gifts*

1732-B Hwy. 95
Dakota Plaza
Bullhead City, AZ 86442

(602) 763-6808

Brenda Kroeber



WEST COAST
QUALITY AIRCRAFT INTERIORS

Joseph F. Scott - Owner

(602) 758-8912

104 Hwy 95 • P.O. Box 649
Bullhead City, AZ 86430

Located Rear of
WINDROCK AVIATION
Bullhead City Airport

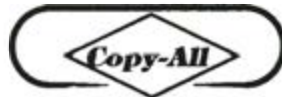
**BETTY HUNTER,
inc., REALTOR**



**BETTY HUNTER,
CRB, CRS, GRI
BROKER**

RIVERGATE PLAZA
601 RIVERSIDE DRIVE #1
PARKER, ARIZONA 85344

BUS. (602) 669-9268
RES. (602) 669-8583



SHARP.
FROM SHARP MINDS
COME SHARP PRODUCTS™

(602) 768-3041

(602) 768-4771

(602) 453-1112

10325 Barrackman Rd.
Mohave Valley, AZ 86440

**SEAPLANE - MULTI-ENGINE - ATP
ACCELERATED COURSES**



1675 Highway 95, H-1
Bullhead City, AZ 86442

(602) 758-8318

Jo Jo & Valerie Sheble
Owners



FRAN BERA
San Diego, CA

JUNE McCORMACK
Borrego Springs, CA

CLASSIC 43
Cessna 172 N 160 hp

June, flying her third Classic — 2185 hours with single land/sea and Instrument — Borrego Springs 99s. Pilot husband, Jim, and June have three children, all pilots, and twelve grandchildren. Both she and husband retired from business ownership affording the fun of ATV riding in desert and traveling.

Fran started flying at age sixteen and has been a part of aviation since then. Twenty five years as an FAA Examiner, Airline Transport, single/multi land, single sea, Flight Instructor Airplane/Instrument/Multiengine, Helicopter Instructor, Free Balloon, Ltd. to Hot air Balloon, Skydiver (nine jumps) with over 20,000 hours and flying her second Classic. Married to Ted, Fran retired a few years ago and now flies for fun and is a member of the San Diego 99s.



MARCIE BISSELL
Plano, TX

SANDRA CARRUTHERS
Carrollton, TX

CLASSIC 44
Cessna 172 RG 180 hp

The first Classic for this team. Welcome!

With Instrument and Ground Instructor Advanced, Sandra has acquired 500 hours. She is a programmer/analyst for a software development company and pilot husband is projects manager — I/O Systems for Conrex Computer Corporation. A member of the Dallas Redbirds 99s, Sandra says she doesn't run marathons, so racing seemed like a good "something else" to do!

Marcie is going along because Sandra asked her. Working now as a ferry pilot and instructor, she has 1200 hours — Commercial, single/multi land, Flight Instructor Airplane/Instrument/Multiengine and member of Dallas Redbirds 99s. Married to Stanley, American Airlines Captain, they have three children.



From the Half of the
London Bridge/Havasu 99s
Left Behind
Best Wishes to the Half
that is going!
Fast LEGS &
Happy Landings!



WHAT HAPPENED??? I WASN'T
READY TO COME OUT YET !!!



SUSAN COCO
Kenner, LA

MONICA HACKETT
Harvey, LA

CLASSIC 45
Beechcraft M35 250 hp

Great to have you, Monica and Susan, to your first Classic!

Talk about from land to air — Monica has a masters degree in Landscape Architecture and owner of Phase One Plus, Inc. (landscape architecture and planning firm). She is currently closing office to pursue a career as an Airline Pilot. A member of South Louisiana 99s — with Commercial, single/multi land, Instrument and has acquired 2300 hours. Pilot husband, Michael, is a Data Processor and they have two children.

Susan with Instrument and 230 hours works as Commercial Sales Representative for Davis Contract Draperies. Treasurer for the Louisiana 99s, and she has one child. Susan, a native of Rhode Island, has lived the past eight years in Louisiana with aspirations towards a career in aviation. Body building has afforded her many wins in contests. (Susan body builds with weights — I body build with food — Susan looks better!)



JANE BERGISHAGEN
Birmingham, MI

JUNE BEERS
Rochester Hills, MI

CLASSIC 46
Piper PA 28-200R II 200 hp

Welcome to your first Classic, Jane. She and husband, Erik, own and operate a Kennel to include boarding, grooming, training and show. They have one child. Single land/sea, Instrument — 540 hours. Renaissance 99s claim Jane and June.

With Airline Transport, single/multi land, single sea, Flight Instructor Airplane/Instrument/Multiengine, Ground Instructor Advanced/Instrument — 3000 hours — June is flying her eighth Classic. Manager of Benefits for General Dynamics Land Systems Division, she is married to Robert, Vice-President Manufacturing for Keller Industries.



Heartfelt thanks to:

Lane Wallace

Brenda K's

Glenn Buffington

Joyce Wells

Terri Manriquez — Brubaker

Alberta Nicholson

Inland Aerial Surveys, Inc.



CHRISTOPHER TRAVEL AGENCY

FULLY AUTOMATED COMPLETE WORLDWIDE TRAVEL SERVICES
... YOUR PASSPORT TO THE WORLD

- CRUISES • TOURS
- SKI VACATIONS • AIRLINE TICKETS
- CORPORATE AND GROUP TRAVEL




539-4461

HOURS
MON.-FRI. 7:30AM - 5PM
SAT. 9AM - 12NOON

2304 WHITESBURG DR. S

FAX (205) 539-5522 24 HOUR TRAVEL HOTLINE 800-524-4500

U-FUEL Supports Women Pilots!

Above Ground Fuel Facilities

AIRPORT LOCATIONS

- HazelGreen, AL
- Hibbing, MN
- Minneapolis/St. Paul International
- Cape May, NJ
- Mexia, TX
- Ladysmith, WI
- Chetek, WI
- Siren, WI
- Green Bay, WI
- Oshkosh, WI
- Westosha, WI
- Milwaukee Mitchell Field
- Cape Hatteras, NC (Coast Guard)

BENEFITS:

- Above Ground
- Portable
- Attractive
- Economical
- Bullet Proof
- Meets EPA Requirements
- Dispenses 15 gpm To 250 gpm



*Locations On 1991 Air Race Route

U-FUEL, Inc., P.O. Box 1511, Eau Claire, WI 54702
715-836-0905





DONNA JOHNSON
Colorado Springs, CO

GEORGIA MATTESON
Colorado Springs, CO



MARY LEE BLAIS
Plainville, MA

MICHELEE CABOT
Princeton, MA

CLASSIC 47
Cessna 172RG 180 hp

A first Classic for this team. Welcome, Georgia and Donna.

Georgia with Commercial, single/multi land, Flight Instructor/Airplane, Ground Instructor Advanced/Instrument has acquired 1000 hours. Owner/operator of Aerotech Flight Services, Inc. (flight school and charter service), she and husband Charles have three children. Georgia feels racing will be fun — and it is!

Donna, bookkeeper for Aerotech Flight Services is a brand new pilot with 70.4 hours. What a wonderful experience and fun time in store for you.

This team represents Pikes Peak 99s.

CLASSIC 48
Cessna 182 P 230 hp

First Classic ... Michelee and Mary Lee ... Welcome! Recent chairman of the New England 99s, Michelee has enjoyed a most diversified life as a volunteer and employee — tow pilot for glider club — office manager for FBO — radio host — restaurant reviewer — art museum — member of world-traveled choir — but says flying is best. She and pilot husband, bank president, have six children and two grandchildren. Commercial, Instrument, Commercial/Glider and 2403.5 hours.

Mary Lee with Instrument and 476 hours has for eleven years been Director of Community Mental Health Center for the Boston Community Services. Above average skier, average golfer, volunteer coach for girl's softball team and only as a spectator enjoys opera and ballet. A member of Eastern New England 99s.

From Massachusetts to Arizona/Nevada — from Alabama to Massachusetts — and all those places in between — certainly will add challenge and skills to your flying.

"Hope these two teams have something to crow about!"





SUSAN JORDON
Redwood Valley, CA

LaVONNE BOYLE
San Rafael, CA



DAPHNE SCHIFF
Toronto, Ontario

ADELE FOGLE
North York, Ontario

CLASSIC 49
Mooney M201J 200 hp

Sponsored by:
Top Gun Aviation
Stockton, California
(Mooney Service Center)

Susan, happy to have you flying your first Classic, and what a neat way to celebrate a half century birthday! Commercial and Instrument with 1550 hours. Susan, an Attorney, has practiced law since 1970, specializing in criminal defense. A member of Marin County 99s, she has one child.

Flying her third Classic, LaVonne has Commercial, Instrument, Flight Instructor/Airplane and 950 hours. She is currently a Systems Analyst/Computer Programmer for Sumitomo Bank of California and considering a career change in the near future of full time flight instruction. A member of Marin County 99s, LaVonne has three children and two grandchildren.

CLASSIC 50
Piper PA 44-180 360 hp

Daphne with Airline Transport, single/multi land, single sea, Jet (type rated) ST 27, Flight Instructor Airplane/ Instruments/Multiengine, Instrument Ground Instructor and 2500 hours, is flying her second Classic. ... "Practice makes perfect." A Professor of Aeronautics and Meteorology at York University and pilot husband, Harold, also a Professor, have two children and two grandchildren.

Owner/operator of FBO, Aviation International (charter and flight training academy), Adele and Arnold have two children and one grandchild. Commercial, single/multi land, Flight Instructor Airplane/Instrument/Multiengine, Advanced and Instrument Ground, 2000 hours, flying second Classic, asks the question "to trust the Loran or not?" Both members of First Canadian 99s.



Special Thanks —

Paradise Aviation
Vegas Radio
The Lube Rack
Windrock Aviation, Inc.
Arizona Aircraft Interior Designs
Business Systems West
Ace Photography



SAMMY McKAY
Grand Blanc, MI



MARY ANGLIN
Fenton, MI

CLASSIC 51
Cessna 210J 285 hp

All Classics for Sammy — 3800+ hours with Commercial — Last to take off does not mean last to place, Sammy! Retired (ho! ho!) and doing what she's done all her life — work on her real estate. Two grandchildren and when asked why she races — the answer "NUTS"!

Mary — 7500 hours — Commercial, single/multi land, single/multi sea, Flight Instructor Airplane/Instrument and Advanced Ground Instructor. Chief pilot for Skybolt, 141 Flight School, and general manager for an FBO. Michigan Chapter 99s claim this team.

Most Sincerely,

Golden Banner Press, Inc.

Precise Flight, Inc.

Alpine Air

Quick Drywall

Best Little Nail House

London Bridge Resort

Brackett Air Filters

Spike's Real Estate

RE/MAX Caravan Realty

BAJA FISHING

WITH BOB BUTLERS FISHERMANS FLEET

La paz • Buena Vista • Cerralvo Island
25 years experience in these waters

- WAHOO
- YELLOWTAIL
- BASS
- RED SNAPPER
- AMBERJACK
- SAILFISH
- MARLIN
- DORADO
- TUNA
- PARGO
- SIERRA
- ROOSTERFISH



5 DAYS, 4 NIGHTS

Three days fishing
22 foot fiberglass skiff
two fisherman per boat
with guide & live bait

\$455 PER PERSON

4 DAYS, 3 NIGHTS

Two days fishing
22 foot fiberglass skiff
two fisherman per boat
with guide & live bait.

\$390 PER PERSON

PRICE INCLUDES: Lodging, Boat & Guide, Bait, Ice, Transportation to Fishing Grounds, All Lunches, Two Dinners, Fishing License, Fish Cleaning, Fish Fileting and Packaging, etc.

P.O. BOX 6151

SAN BERNARDINO, CA 92412

GROUP RATES AVAILABLE • 714 885-6208

WALT & CORI KEZA

**We Look Forward
To Welcoming You To
Huntsville**

**HUNTSVILLE
AVIATION**

**Best Wishes
In 1991**

William R. Whatley
Vice President & General Manager

David L. Goodwin
Assistant Manager & Chief Pilot

AWARDS

FIRST PLACE

Air Race Classic award for Pilot and Co-Pilot and \$5,000.00 in cash.

SECOND PLACE

Air Race Classic award for Pilot and Co-Pilot and \$3,000.00 in cash.

THIRD PLACE

Air Race Classic award for Pilot and Co-Pilot and \$2,000.00 in cash.

FOURTH PLACE

Air Race Classic award for Pilot and Co-Pilot and \$1,500.00 in cash.

FIFTH PLACE

Air Race Classic award for Pilot and Co-Pilot and \$950.00 in cash.

SIXTH PLACE

Air Race Classic award for Pilot and Co-Pilot and \$700.00 in cash.

SEVENTH PLACE

Air Race Classic award for Pilot and Co-Pilot and \$600.00 in cash.

EIGHTH PLACE

Air Race Classic award for Pilot and Co-Pilot and \$500.00 in cash.

NINTH PLACE

Air Race Classic award for Pilot and Co-Pilot and \$400.00 in cash.

TENTH PLACE

Air Race Classic award for Pilot and Co-Pilot and \$350.00 in cash.

MARY PEARSON AWARD: Highest Scoring Team Flying the Air Race Classic the First Time.

HIGHEST SCORE FOR FIRST TIME RACER (not ever having used any weather service or consultant): WEATHER SERVICE FOR 1992 AIR RACE CLASSIC (non-transferable) by Richard Patton, 3149 Beech Drive, East Point, GA 30344.

HIGHEST SCORING TEAM HAVING NEVER FLOWN ANY PRIOR RACE: Two hand-held spotlights, Teledyne Battery Products, P.O. Box 1250, Redland, CA 92374.

***** _ _ _ *** SOS AWARD:** to the team that places last — Heatscreen, Kevin Lewis, Morgan Stanford Aviation 1805-J 2nd Street, Berkeley, CA 94710.

LEG PRIZES

(Top Ten Winners Not Eligible)

Leg #	From	To	Place	Award
1	Laughlin, Nevada/ Bullhead City, Arizona	Provo	1	\$75.00 (Two Medallions)
			2	50.00 (Two Medallions)
			3	25.00 (Two Medallions)
			4	(Two Medallions)
2	Provo	Worland	1	\$75.00 (Two Medallions)
			2	50.00 (Two Medallions)
			3	25.00 (Two Medallions)
			4	(Two Medallions)
3	Worland	Philip	1	\$75.00 (Two Medallions)
			2	50.00 (Two Medallions)
			3	25.00 (Two Medallions)
			4	(Two Medallions)
4	Philip	Detroit Lakes	1	\$75.00 (Two Medallions)
			2	50.00 (Two Medallions)
			3	25.00 (Two Medallions)
			4	(Two Medallions)
5	Detroit Lakes	Minocqua-Woodruff	1	\$75.00 (Two Medallions)
			2	50.00 (Two Medallions)
			3	25.00 (Two Medallions)
			4	(Two Medallions)
6	Minocqua-Woodruff	Burlington	1	\$75.00 (Two Medallions)
			2	50.00 (Two Medallions)
			3	25.00 (Two Medallions)
			4	(Two Medallions)
7	Burlington	Mountain Home	1	\$75.00 (Two Medallions)
			2	50.00 (Two Medallions)
			3	25.00 (Two Medallions)
			4	(Two Medallions)
8	Mountain Home	Huntsville	1	\$75.00 (Two Medallions)
			2	50.00 (Two Medallions)
			3	25.00 (Two Medallions)
			4	(Two Medallions)

SPECIAL AWARDS:

Provo The 25th Classic to cross timing line will receive \$50. Courtesy of Utah 99s

Worland Wyoming 99s will present to the Classic who is 11th to cross the timing line a jade handle letter opener.
Hosted by Worland Chamber of Commerce and Community Service Clubs to all RONS (remaining overnight) will enjoy a complimentary breakfast.
In honor of their 50th Anniversary, the Colorado 99s will donate \$50 to last team crossing timing line. Both pilot and co-pilot must be members of South Central Section 99s.

Phillip The 29th plane to cross timing line will receive \$50 compliments of Sebyl Franks.

Detroit Lakes Each pilot and co-pilot in planes to cross timing line in places 3rd - 15th - 45th will receive a packet of wild rice – compliments of Chamber of Commerce.
Roger O'Berg (airport manager) will present each landing contestant with a sun visor.

Minocqua-Woodruff Donated by Lakeland Aviation:
Rayban sunglasses – 9th team to cross timing line
Pocket Flashlight set – 23rd team to cross timing line
Accessories (Plexo cleaner, etc.) – 46th team to cross timing line

Mountain Home Linck Aviation will donate to first RON team (remaining overnight) a complimentary dinner and lodging at Holiday Inn.
White River Float Trip and One Night Lodging
Nell Hudspeth
Mountain Home Holiday Inn
Mountain Home, AR 72653

OTHER PRIZES:

ELT Battery Flash Light	Artex: Debby P.O. Box 170 Canby, OR 97013
Aviation Clocks	Foxtrot Products Route 1, Box 446-A Hot Springs, AR 71913
Pulse Lite Model 1210/2405-2	Precise Flight, Inc. 63120 Powell Butte Rd. Bend, OR 97701
Music Box	Sharon Bender Aviation Promotions, Inc. P.O. Box 370 Pollocksville, NC 28573

DONATED TO ALL CONTESTANTS:

Trip Kit for Race	Jeppesen-Sanders Pat Woods 55 Inverness Dr. E Englewood, CO 80112-5498
Pencils	McCreery Aviation P.O. Box 1659 McAllen, TX 78501
Chart Cases	London Bridge/Havasu 99s Sandra Fisher 1700 Deer Run Lake Havasu, AZ 86403
Key Chains	Sam's Town Gold River Hotel and Gambling Hall Laughlin, NV

**RED BARRON AVIATION
& AVIONICS, INC.**



For All
Your Avionic Needs

600 Aviation Road
Bessemer, Alabama 35023
Bessemer Airport

J.D. BARRON **426-9425**
 426-9426

**SOUTHERN MUSEUM
OF FLIGHT**



4343 73rd Street, North
Birmingham, Alabama 35206
(205) 833-8226



**Cotton Pickin'
Antiques**

8402 WHITESBURG DRIVE, SOUTH
HUNTSVILLE, ALABAMA 35802
(205) 883-1010

COWELL AVIATION



Aircraft Maintenance
Flight Instruction

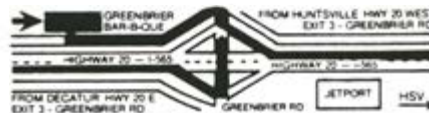
Hazel Green Airport
386 Opp Reynolds Rd.
Hazel Green, AL 35750

Samuel Cowell
(205) 828-6442



Margaret Berzett
President

Route 1,
Box 155 (I-565)
Madison, Alabama 35758
205/355-6062



Complete Automotive
Service Center

62 Capri Lane
Lake Havasu City, Arizona
(602) 855-TIRE (8473)

1699 Mesquite Ave.
Lake Havasu City, Arizona
(602) 855-LUBE (5823)

THANK YOU ...

Peter Nessel
Ron Bernstein
Sun Valley Airport
Nell Hudspeth
Aviation Promotions, Inc.
Sebly Franks
Inland Aerial Surveys, Inc.



Our Appreciation to –
Jerry Christian Aircraft Sales
Lanmon Aerial Photography
Starflight
Huntsville Composite Squadron Civil Air Patrol
U-Fuel, Inc.
Christopher Travel Agency
Alabama Business Systems

AIR RACE CLASSIC WINNERS

1977

Marion Jayne, Nancy Jayne — Joyce Wells — Luana Davis — Norma Futterman, Virginia Showers — Esther Wright, Judy Hall — Pat Jetton, Elinor Johnson — Ali Sharp — Jean Rose, Janice Free — Pat Gatlin, Pat Friedman — Velda Mapelli, Stephanie Mapelli.

1978

Sophia Payton, Helen Davison — Dot Etheridge, Dot Wilson — Pat Jetton, Elinor Johnson — Helen McGee, Norma Draper — Sammy McKay, Winnie DuPerow — Marion Jayne, Patricia Keefer — Helen Wilke, Kathy Long — Barbara Goetz, Thelma Cull — Joyce Wells, Alma Hinds — Susan Adler, Mary Santosuosso.

1979

Marion Jayne, Nancy Jayne — Margaret Ringenberg, Pat Wilson — Claire Walters, Eleanor Ruby Moore — Virginia Wegener, Lynn Carey — Tanya Cunningham, Caroline Ann Morey — Joan Paynter, Shirley Tanner — Dot Etheridge, Dot Wilson — Joyce Wells, Alma Hinds — Sophia Payton, Helen Davison — Jan Gammell, Ilovene Potter.

1980

Pat Jetton, Elinor Johnson — Sammy McKay, Marian Banks — Dot Etheridge — Marion Jayne, Patricia Keefer — Dottie Anderson, Marilyn Miller — Ali Sharp, Berni Stevenson — Alma Hinds, Joyce Wells — Suzanne Jablonski, Barbara Persons — Carolyn Pilaar, Gary Wheeler — Sophia Payton, Sherry Harper.

1981

Juanita Blumberg, Bonnie Quenzler — Edna Gardner Whyte, Patricia Hyde — Sammy McKay, Pauline Mallary — Marion Jayne, Nancy Palozola — Dottie Anderson, Marilyn Miller — Pat Jetton, Elinor Johnson — Esther Lowry, Betty Klein — Margaret Ringenberg, Janet Williamson — Sophia Payton, Helen Davison — Barbara Goetz, Thelma Cull.

1982

Maybelle Fletcher, Mary Byers — Martie Pearce — Pauline Glasson, Sue Gray — Margaret Ringenberg, Wilma Ashe — Bonnie Quenzler, Shirley Zillig — Marion P. Jayne, Nancy Palozola — Caroline Pilaar, Caroline Grubbs — Pat Jetton, Elinor Johnson — Susan Maule, Gary Wheeler — Dot Etheridge.

1983

Gini Richardson, Marian Banks — Sharon Crawford, Marie Hoefler — Pauline Glasson, Donna Golden — "Tookie" Hensley, Janice Hoffman — June Beers, Nancy Walters — Lynne Kay Ulicki, Jayne Ann Overgard — Fran Bera, Betty Faux — Jean "Sunny" Schiffman, Suzy Henney — Marion Jayne, Jean Speckman — Anna Kate Hipp, Merry Robertson.

1984

Phyllis Baer, Dodie Gann — Jayne Overgard, Lynne Ulicki — Pauline Mallary — Jean Sloan, Dottie Anderson — Marian Banks, Gini Richardson — Pat Fairbanks, "Soph" Payton — Marion P. Jayne — Diane Shaw Schulke, Genie Rae O'Kelley — Stephanie D. Mapelli, Velda King Mapelli — Marie Hoefler, Sharon Crawford.

1985

Gini Richardson — Caroline Grubbs, Bonnie Gann — June Beers, Sammy McKay — Mary Jo Volk, Rita Buhl — Kathy Walton, Joyce Wells — Sharon Crawford, Genie Merrell — Dot Arnett, Margaret Ringenberg — Jenny Wright, Joan Steinberger — Carolyn Pilaar, Gary Wheeler — Janice Hoffman, "Tookie" Hensley.

1986

Marion Jayne — Janet Yoder, Margaret Ringenberg — Maybelle Fletcher, Kitty Havens — Esther Lowry, Shirley Winn — Marge Thayer, Ruby Sheldon — Gary Wheeler, Carolyn Pilaar — Gini Richardson — Margaret Callaway, Susan Kennedy — Carole Rose, Lorrie Blech — Rita Buhl, Mary Jo Volk.

1987

Marion Jayne — Margaret Ringenberg, Janet Yoder — Caroline Salmans, Bonnie Gann — June McCormick — Janice Brown, Bunny Haberfelde — Sharon Crawford, Marie Hoefler — Esther Lowry, Sue Gray — Lois Van Zelf, Pam vanderLinden — Joy La Caille, Nancy Toon — Elaine Roehrig and Marolyn Wilson.

TWELFTH AIR RACE CLASSIC WINNERS – 1988



Left to Right, Front Row: 9th Place - DANA WOOTEN, GENIERAE O'KELLEY — 8th Place - GARY WHEELER, CAROLYN PILAAR — 1st Place - MARGARET RINGENBERG — 2nd Place - BONNIE GANN, SHIRLEY ZILLIG — 3rd Place - "BUNNY" HABERFELDE, JANICE BROWN. Left to Right, Back Row: 10th Place - MARY CREASON, BARBARA GOODWIN — 4th Place - SUSAN COLLER, NANCY TOON — 5th Place - PAULINE MALLERY — 6th Place - SUSAN TARABETZ, JEAN SCHIFFMANN — and 7th Place - GINI RICHARDSON.

THIRTEENTH AIR RACE CLASSIC WINNERS – 1989



MARGE THAYER

RUBY SHELDON



MARGARET RINGENBERG



NAOMI RUTH WITMER



BETTY YOUNG



MARY CREASON



MARION P. JAYNE



PATRICIA KEEFER



GINI S. RICHARDSON



MARGARET CALLAWAY



SUNNY SCHIFFMANN

SUSAN L. TARABETZ



SUSAN CHAPPLE

CHRIS EMMONS



JEAN SLOAN

DOTTIE ANDERSON



JENNY WRIGHT

JOAN STEINBERGER



JOYCE WELLS

KATHY WALTON



See you in 1992!

Thermal, California

Friends of Thermal Airport "Looking to the Future"

to

Elk City, Oklahoma

Queen of the West

June 26-29, 1992

FOURTEENTH AIR RACE CLASSIC WINNERS — 1990



ESTHER GRUPENHAGEN



MARDELL HASKINS



NANCY FITZPATRICK

MARGARET RINGENBERG



MARGE THAYER

RUBY SHELDON



BARBARA GOODWIN

MARY CREASON



MARY JO VOLK

RITA BUHL



JOYCE HILCHIE

EDDIE WHISTLE



JENNY WRIGHT

JOAN STEINBERGER



JEAN SLOAN

DOTTIE ANDERSON



ROSE LEPORE

CATHY WAPPLER



NORMA FUTTERMAN

MARGARET MEAD

IN **1947** CAME THE **TRANSCONTINENTAL AIR RACE — AWTAR** (ALL-WOMAN TRANSCONTINENTAL AIR RACE) "POWDER PUFF DERBY" with MARDO CRANE, CHAIRMAN
Palm Springs, California to Tampa, Florida

IN **1952** BETTY GILLIES BECAME CHAIRMAN UNTIL 1961.

IN **1961** KAY BRICK TOOK OVER UNTIL 1975 WHEN MARIAN BANKS (1975 & 1976) BECAME CHAIRMAN.

IN **1977** THE 30TH COMMEMORATIVE FLIGHT OF THE ALL-WOMAN TRANSCONTINENTAL AIR RACE (Powder Puff Derby) marked the end of an era. Because of this transcontinental speed race, women's interest in flying increased around the world using the race as a vehicle for sharpening their skills and proving their competence.

Many people throughout the country are responsible for the success of women's air races and we are grateful to the Powder Puff Derby for laying the foundation for "the magic of racing" and their support to the Air Race Classic.

Fifteen Years of Flying!

Where We Have Been ... And When!

Alabama

Huntsville – 1991

Arizona

Bullhead City – 1991
 Casa Grande – 1983
 Kingman – 1987
 Page – 1985
 Winslow – 1990

Arkansas

Fayetteville – 1990
 Fort Smith – 1980
 Hot Springs – 1978
 Jonesboro – 1987
 Mountain Home – 1991
 Texarkana – 1985

California

Agua Dulce (fly-by) – 1987
 Alturas – 1989
 Calexico (fly-by) – 1983
 El Cajon – 1983
 Rancho Murieta (fly-by) – 1987
 Redding – 1985
 Rio Bravo – 1987
 Sacramento – 1989
 Salinas – 1988
 Santa Monica – 1979
 Santa Rosa – 1977 – 1986
 Stockton – 1979
 Temecula Valley – 1990

Colorado

Grand Junction – 1978

Florida

Daytona Beach – 1985
 Destin/Fort Walton Beach – 1978

Georgia

Albany – 1985
 Gainesville – 1984
 Jekyll Island – 1981

Idaho

Boise – 1977 – 1986
 Coeur d'Alene – 1982
 Idaho Falls – 1988
 Twin Falls – 1984

Illinois

Galesburg – 1981
 Kankakee – 1988
 Marion – 1980
 Mount Vernon – 1990

Indiana

Columbus – 1987
 Evansville – 1977 – 1986
 Lafayette – 1989

Iowa

Burlington – 1991
 Cedar Rapids – 1977 – 1986
 Marshalltown – 1989
 Mason City – 1988
 Waterloo – 1980

Kansas

Belleville – 1990
 Dodge City – 1984
 Garden City – 1981
 Hutchinson – 1983
 Olathe – 1978
 Salina – 1980
 Winfield – 1987

Kentucky

Lexington – 1981
 Louisville – 1983
 Paducah – 1984

Michigan

Grand Rapids – 1983

Minnesota

Detroit Lakes – 1991
 Minneapolis – 1979

Mississippi

Gulfport – 1978
 Meridian – 1985

Missouri

Columbia – 1983
 Jefferson City – 1982
 Joplin – 1984

Montana

Cut Bank – 1982
 Great Falls – 1979
 Miles City – 1982

Nebraska

Ainsworth – 1989
 Grand Island – 1977 – 1986
 Kearney – 1988
 Lincoln – 1982
 North Platte – 1978
 Scottsbluff – 1984
 Sidney – 1981

Nevada

Elko – 1985
 Jackpot – 1989
 Las Vegas – 1978
 Laughlin – 1991
 Winnemucca – 1988

New Mexico

Farmington – 1987
 Las Vegas – 1990
 Santa Fe – 1985

North Carolina

Greensboro – 1981

North Dakota

Bismarck – 1979

Ohio

Toledo – 1977 – 1986
 Youngstown – 1989

Oklahoma

Burns Flat – 1978
 Elk City – 1990
 Shangri-La, Afton – 1981

Oregon

Klamath Falls – 1979
 Medford – 1977 – 1986
 Sunriver – 1982

Pennsylvania

Philadelphia – 1989
 York – 1990

South Carolina

Columbia – 1980
 Greenville – 1987

South Dakota

Philip – 1991
 Pierre – 1982
 Sioux Falls – 1981

Tennessee

Jackson – 1982
 Knoxville – 1982

Texas

Abilene – 1980
 Childress – 1985
 Corpus Christi – 1980
 Dalhart – 1987
 El Paso – 1983
 Lubbock – 1983

Utah

Ogden – 1977 – 1986
 Provo – 1991
 Vernal (fly-by) – 1991

Washington

Pasco – 1984
 Walla Walla – 1979

West Virginia

Huntington – 1980 – 1988 – 1990

Wisconsin

Milwaukee – 1979
 Minocqua-Woodruff – 1991

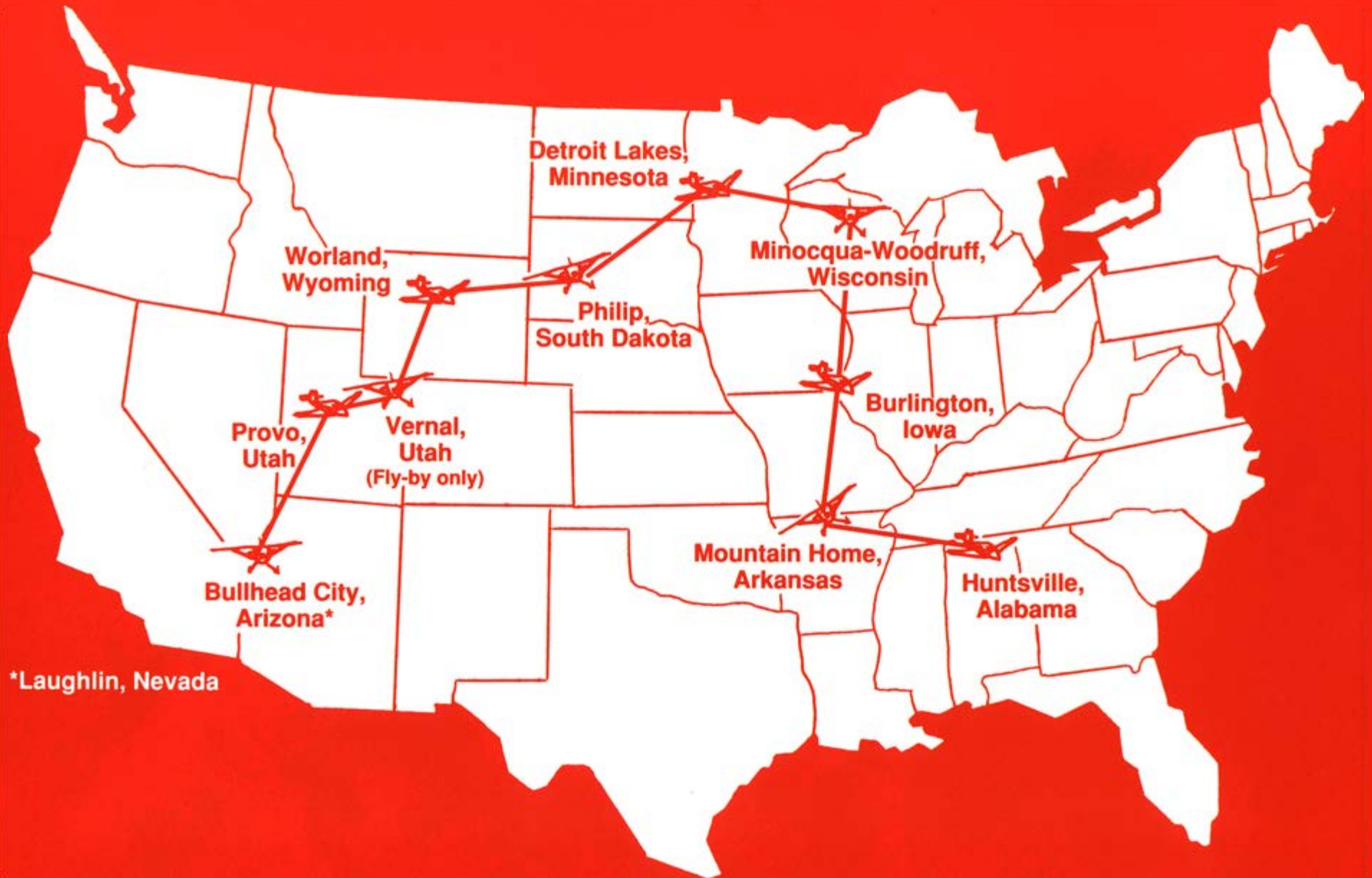
Wyoming

Casper – 1978
 Cheyenne – 1977 – 1986
 Laramie – 1988
 Rawlins – 1989
 Rock Springs – 1984
 Sheridan – 1979
 Worland – 1991

Notes & Autographs



1991 RACE ROUTE



JUNE 25-28, 1991
2723.70 STATUTE MILES



Located in Bullhead City, Arizona overlooking the Colorado River, just steps away from the Number One Entertainment & Gambling Spot in Laughlin, Nevada.

- 100LL Jet A Fuel ▪ Hangars
- Tie Downs ▪ Rental Cars ▪ Repairs
- 24 Hour Market & Service Station

Free Ferry or Shuttle Service to Don Laughlin's Riverside Resort Hotel & Casino



Undergoing expansion.

EXPERIENCE THE LEGEND...

at Don Laughlin's Riverside Resort Hotel & Casino



Located in Laughlin, Nevada on the banks of the Colorado River directly across from the Bullhead-Laughlin Airport.

Celebrating our 25th Anniversary this year.

- Two Showrooms featuring Top Name Entertainment
- 24 hr. Gaming Excitement!
- 1,500 Slots ▪ Roulette ▪ "21"
- Craps ▪ Poker ▪ \$10,000 Bingo
- \$100,000 Keno ▪ Big 6
- Much Much More!



FOR MORE INFORMATION CALL: TOLL-FREE (800) 227-3849 ▪ IN NEVADA (702) 298-2535



Alpine Air

Provo Municipal Airport / P.O. Box 691, Provo, Utah 84603 / Provo (801) 373-1508

PROVO, UTAH

RACE HEADQUARTERS:

ALPINE AIR

PROVIDING:

UNICOM: 122.8

Staging Hangar for participants

25¢ per gallon Chevron fuel

discount to contestants

FREE Shuttle Service

FREE FAX Usage

24 Hour Maintenance Facility

FAST Turn-Around



Serving more cities in Utah than any other Airline