

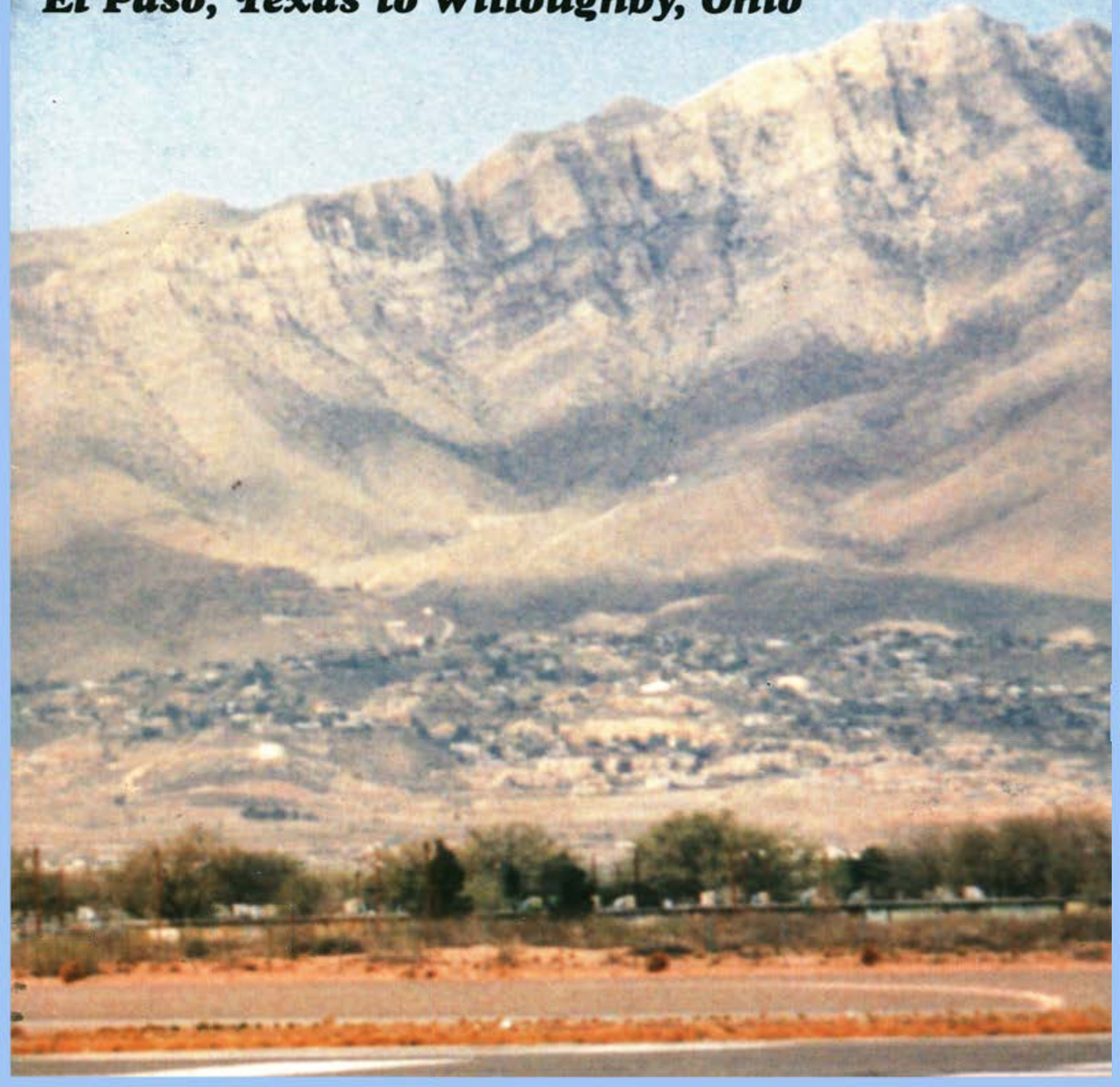
23rd AIR RACE CLASSIC

June 22-25, 1999

Official Program \$8.00



El Paso, Texas to Willoughby, Ohio





SNOOPY and the gang at the REDWOOD EMPIRE ICE ARENA

Wish you all smooth flights & success



©1958
United Feature
Syndicate, Inc.

Snoopy's Gallery features a museum containing Charles M. Schulz awards, drawings and personal memorabilia. The Gift Shop portion of the building houses the largest selection of Snoopy products in the world. The Gallery/Gift Shop is open daily from 10am to 6pm. It is located within walking distance of Coddington Center. Turn west off Range Avenue onto West Steele Lane. Snoopy's Gallery and the Redwood Empire Ice Arena is located one block down on the right.



ALL LOCATED AT:

REDWOOD EMPIRE ICE ARENA

1667 West Steele Ln. Santa Rosa, California

*Special Thanks To All
1999 Air Race Classic Contestants*

and

El Paso International Airport

San Angelo, Texas

Ada, Oklahoma

Kaiser Lake, Missouri

Freeport, Illinois

Seymour, Indiana

Flint, Michigan

Toronto, Canada

Perry-Warsaw, New York (Fly-By)

and

Willoughby, Ohio

AIR RACE CLASSIC LTD.

318 Glasson Drive
Corpus Christi, Texas 78406

EDITORS.....PAULINE GLASSON AND BARBARA LEWIS
PUBLISHER.....GOLDEN BANNER PRESS, INC.

INDEX

CONTESTANTS (ALPHABETICAL LISTING).....	3
AIR RACE CLASSIC DIRECTORS.....	5
RACE START	6-7
ENROUTE STOPS.....	8-15
RACE TERMINUS	16-17
HANDICAPS.....	18-19
DESIGNATED AIRPORTS ON THE ROUTE.....	19
GENERAL INFORMATION /EVENTS.....	19
CONTESTANTS.....	20-44
AWARDS.....	45
LEG PRIZES.....	46-47
1977 THRU 1995 AIR RACE CLASSIC WINNERS.....	48
1996 AIR RACE CLASSIC WINNERS.....	49
1997 AIR RACE CLASSIC WINNERS.....	50
1998 AIR RACE CLASSIC WINNERS.....	51
TWENTY-THREE YEARS OF FLYING	52

CONTESTANTS

Classic No.	Name	Page	Classic No.	Name	Page
4	Anderson, Dottie	21	15	Johnson, Bonnie	29
25	Azar, Suzanne	34	44	Kime, Susan	43
39	Barris, Bernice	41	41	Lewis, Barbara	42
16	Bently, Chris	29	3	Lowry, Esther	21
26	Bishop, Thea	34	21	May, Gloria	32
31	Blech, Lorrie	37	2	McIntire, Jane	20
46	Bloomingdale, Gwen	44	27	Mitchell, Patty	35
3	Bolkema-Tokar, Judy	21	37	Moore, Donna	40
38	Cerone, Roxanne	40	30	Moore, Susan	36
21	Chabot-Fence, Dene	32	13	Moser, Dana	28
29	Christian, Elizabeth	36	28	Olson, Ruth	35
22	Clifford, Royce	32	32	Payton, Sophia	37
5	Coller, Susan	22	7	Porter, Bonnie	23
12	Conner, Erin	25	43	Pulley, Michele	43
26	Creason, Mary	34	1	Reavis, Debbie	20
40	Crooker, Barbara	41	23	Ringenberg, Margaret	33
35	Daflucas, Margaret	39	8	Roehrig, Elaine	23
14	DeHaven, Debi	28	2	Rumbaugh, Paula	20
18	Dewhurst, Iris	30	45	Sathre, Brianne	44
44	Dickson, Marilyn	43	24	Schiff, Daphne	33
10	Donaldson, Jackie	24	6	Schiffmann, Jean	22
39	Downey, Debbie	41	36	Schumm, Linda	39
20	Dunnam, Mary Helen	31	17	Shea, Janna	30
36	Emhoff, Rosemary	39	28	Sheldon, Ruby	35
29	English, Anne	36	22	Siegel, Jackie	32
45	Evans, June	44	20	Simler, Sue	31
23	Feigenbaum, Lois	33	4	Sloan, Jean	21
33	Field, Kathleen	38	37	Sprang, Pamela	40
24	Fogle, Adele	33	43	Starret, Anne	43
6	Fogle, Beverly	22	31	Steinberger, Joan	37
12	Frazier, Raegan	25	10	Swallow, Helen	24
46	Gard, Barbara	44	17	Thayer, Marge	30
25	Gardy, Michelle	34	5	Toon, Nancy	22
41	Glasson, Pauline	42	13	Trotter, Ruth	28
32	Gorman, Marge	37	34	Van Etten, Lynn	38
18	Hagist, Norma	30	33	Van Newkirk, Carolyn	38
30	Hanson, Cheryl	36	19	Vanover, Beverly	31
14	Haskins, Mardell	28	34	Wagner, Sheilagh	38
35	Havens, Jennifer	39	9	Walton, Kathy	24
11	Hensley, Tookie	25	40	Ward, Diana	41
1	Hivick, Fonda	20	7	Waters, Denise	23
11	Honer, Anne	25	9	Wells, Joyce	24
38	Hull, Terri	40	42	Wheeler, Gary	42
42	Hunt, Ernesteen	42	19	Williams, Becky	31
16	Jahn, Gretchen	29	8	Wilson, Marolyn	23
27	Jessen, Gene Nora	35	15	Yoder, Janet	29

See you in 2000!

(The year of the millennium)

Tucson, Arizona

to

Hyannis, Massachusetts

June 20, 21, 22, 23



DIRECTORS



GENIE RAE O'KELLEY
President



PAULINE GLASSON



ESTHER LOWRY



SUE GRAY



LORRIE BLECH



DOTTIE ANDERSON



DIANE SHAW



RUBY SHELDON



NORMA FUTTERMAN



ANNE HONER
PUBLIC RELATIONS



KATHY WALTON
PUBLIC RELATIONS



CAROLYN VAN NEWKIRK
PUBLIC RELATIONS

VELDA KING MAPELLI
1977-1984 PRESIDENT

PAT JETTON
1985-1987 PRESIDENT

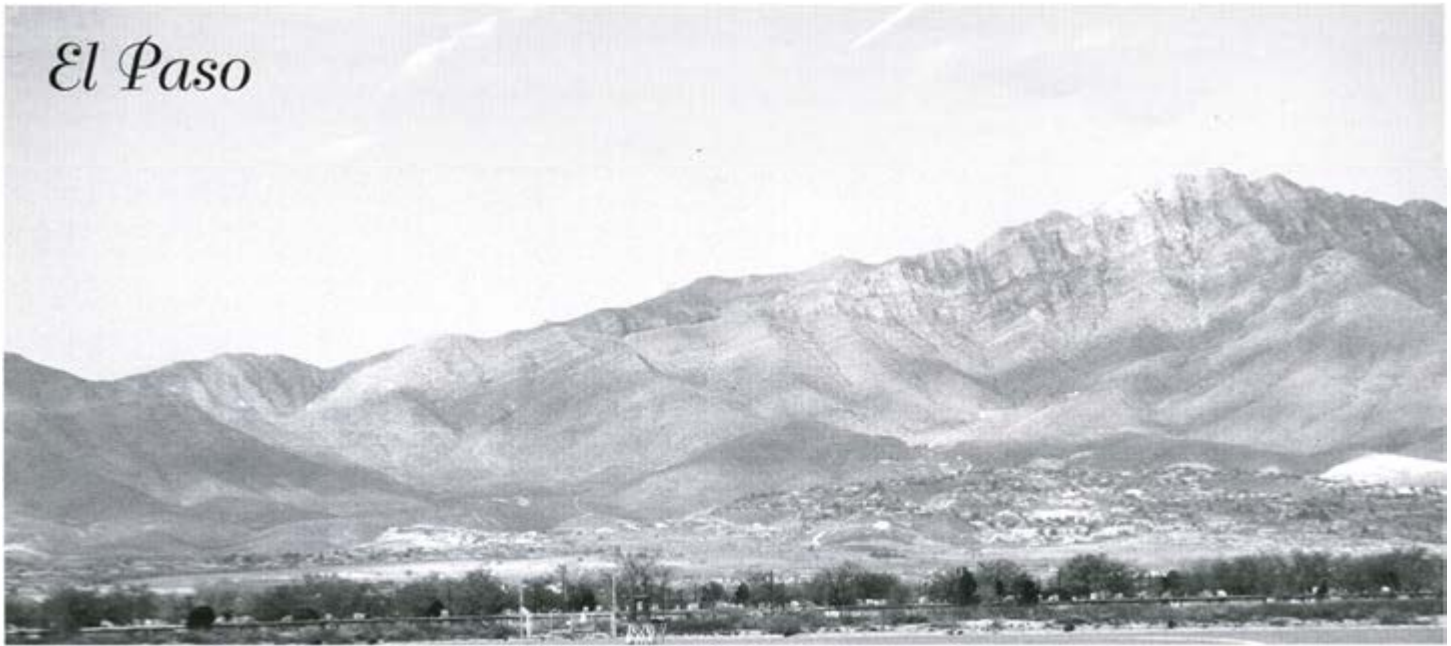
ESTHER LOWRY
1988-1990

BARBARA LEWIS
1991-1993

PAULINE GLASSON
1994-1996

GENIE RAE O'KELLEY
1997-1999

El Paso



THE LEGEND OF EL PASO

To know history is to make history. These stories of El Paso's past are provided by local historian and author, Leon Metz, so that you can go out and **"Make your own History On The Texas Border"**.

First, there was the ancient Rio Grande, occasionally dry, frequently overflowing. It created a bosque, swamps and thickets five miles wide in the El Paso valleys.

A thousand or so years ago, Indians appeared. The Spanish called them Sumas and Mansos. They were a small, wiry, friendly people who lived along the river.

Twelve Spaniards came through in 1581, three priests and nine soldiers taking God to New Mexico. The first European penetration of our El Paso Southwest was now history.

In 1598, Juan de Oñate left Santa Barbara, Chihuahua, with 500 colonists. They celebrated the First Thanksgiving in the United States at today's San Elizario, Texas, on April 30. Four days later they crossed the Rio Grande, naming the ford **El Paso del Rio Del Norte**, the "Pass Across the River of the North". As a name, El Paso was on the map.

Oñate's trek ended the final portion of **El Camino Real**, the Royal Road from Mexico City to Santa Fe. At 1600 miles in length, for two centuries it was the longest highway in North America.

In 1659, El Paso del Norte was built around the mission **Nuestra Señora de Guadalupe**. The city is now called Juarez.

The northern New Mexico Pueblo Revolt of 1680 swept 2,000 Spanish refugees before it to El Paso del Norte. Tigua and Piro Indians arrived, and the Spanish established the Ysleta and Socorro missions. Today they are the oldest missions (and towns) in Texas.

When Cornwallis surrendered at Yorktown during the American Revolution, San Elizario, a Spanish presidio (fort), was being established five miles east of Socorro.

Downtown El Paso began in 1827 as Ponce's Rancho. Two days after Christmas, 1846, Col. Alexander Doniphan and his Missouri Farm Boys captured El Paso del Norte. Ponce's Rancho passed to the United States and became Franklin. The town was a part of New Mexico, and the Rio Grande became the international boundary.

Fort Bliss opened in the downtown area, the first of six eventual locations. Thousands of forty-niners passed through, as did the Butterfield Overland Stage. Franklin voted to join Texas in 1850, and the state's present boundaries were established. In 1859, Franklin became El Paso, Texas.

The railroads arrived in 1881, and the town boomed. The "Four Dead in Five Seconds" gunfight exploded at the intersection of El Paso and San Antonio streets in April 1881. In 1895, John Wesley Hardin, history's deadliest gunfighter, was slain by John Selman in the Acme Saloon.

El Paso del Norte became Juarez in 1888. From 1910 to 1930, the Mexican Revolution raged, with Juarez changing hands six times. Pancho Villa lived at 609 N. Oregon Street in El Paso. Fort Bliss became the largest cavalry post in the nation as the first Desert Shield and Desert Storm thundered along the border with a terrible fury.

The University of Texas at El Paso began in 1914 as the College of Mines and Metallurgy. It has the world's greatest and finest collection of Bhutanese architecture outside of Bhutan. In 1916, Elephant Butte Dam opened in New Mexico, permitting an amazing variety of farming near El Paso.

Today, with a population of nearly 600,000 people, with a 400 year collage of history, El Paso is finally recognizing the strength and importance of its colorful and varied past. Although the legends are in the books of old, the story tellers haven't put away their pens yet.

— Leon Metz



◀ Office Personnel
Cutter Aviation

El Paso
Make History on the Texas Border.

▼ El Paso Tower Personnel



Cutter Line Boys with Alfonso Moreno, GM



El Paso Chapter 99s



Jim & Janet Landfried
Judges/Timers



Evelyn McLaughlin
Judge/Timer



99s work party for ARC

Welcome to San Angelo



With the end of America's civil war, thousands of settlers began moving west in search of their fortunes. Realizing its need to protect these citizens from roving bands of Indians, the government established forts on the frontier.

One such placement, Fort Concho, was made in 1867 at the confluence of three rivers in West Central Texas. The fort at different times was home to mounted cavalry, infantry, and the famous Black infantry whose members were respectfully called "Buffalo Soldiers" by the Indians. Almost as soon as the first units arrived at Fort Concho, a small and somewhat lawless village by the name of Santa Angela came to life just across the river. As the village grew into a community, it became a trade center for the many farmers and ranchers who had settled in the area.

The community later renamed "San Angelo" continued to grow as it moved

into the 20th Century. Today, this city of 93,000 is the trade and services hub of a 13 county area.

An oasis in west Texas, weather and climate play an important role in San Angelo's development. The weather during late June is pleasant with plenty of blue skies and an average temperature of 80 degrees.

The military returned to San Angelo during World War II, when two Army Air Corps training bases were established in the city. Goodfellow Air Force Base, while no longer offering active runways, still provides joint military intelligence and fire fighting training. San Angelo Regional Airport/Mathis Field, formerly Concho Army Airfield, was renamed for Lt. Jack Mathis, a local airman who was killed in action during World War II and awarded the Medal of Honor.

Mathis Field, now a municipal airport, offers visiting fliers a whole host of aeronautical services. The San Angelo Regional Airport is supported by 24-hour/day National Weather Service and FAA Automated Flight Service offices located on the airport. Two FBOs provide fuel services. Recip, turbine engine maintenance and avionics services are also available. The airport offers an excellent suite of instrument approach aids. A FAA control tower governs local area approaches.

The airport terminal offers two facilities in which to dine. A great selection of hotel accommodations are only minutes away and rental cars are available in the terminal.

Enjoy your flight and please accept the warmest of invitations to visit and explore San Angelo.



Ray Minnix & Jessie Morris
Tower



Airport Staff



Bob Reece, Chm.
EAA Nat'l Director



Roy Jackson
Southwest Air Center



Jim Allen
Ranger Aviation



Precision Aircraft Services
Chris Williamson and Jason Sullivan



Janet Koonce
Co-Chairman/
Timer



Timers, left to right: Patricia Petosky, Roxann Rich, Mona Roberts



Ada 'Queen City' of Chickasaw Nation

Welcome to Ada, Okla. Nestled in the rolling hills of South-Central Oklahoma, Ada offers all the amenities of a much larger city, yet maintains the best features of small town America. A mild climate and friendly people characterize the community. The city offers citizens and businesses advantages that have resulted in the development of one of the most diverse economic bases in the region.

What draws them to Ada? First the inexpensive lifestyle and cost of doing business, the area cost-of-living is 91.6 percent of the national average. Additionally, Ada's location is ideal for business, situated between the metro areas of Dallas-Fort Worth (110 miles), Oklahoma City (85 miles) and Tulsa (120 miles), and Ada airport's 6,200-foot runway.

Ada's Municipal Airport joins the city on the south edge and is only a 10-minute drive to Main Street. The 6,200-foot runway facilitates many business executives which enhanced the industrial growth of the city. Several industries are based on the premises, including an aviation paint shop owned by Red and Vera Brend. Forty years of experience and a renowned name for

quality made them the choice for the refurbishing of the AOPA give-away plane for 1999.

However, the city's true strength is in its status as a regional center for education, health services and retail shopping. The city is home to East Central University, a four-year institution with more than 4,000 undergraduates, has an excellent state regional vo-tech facility and has a city school system recently ranked by an independent study as one of the top three in the state. Ada is home to full-service hospitals (Valley View Regional and Carl Albert Indian Hospital), as well as the region's only mental health hospital (Rolling Hills).

Headquarter in Ada, the Chickasaw Nation represents more than 38,000 Chickasaws in the United States and around the world. The Chickasaw Nation's boundaries span 13 counties and covers 7,648 square miles. With an annual budget of more than \$100 million, the Chickasaws employ more than 1,500 people and has an annual payroll of more than \$21 million. Today, the Chickasaw Nation is the largest employer in Pontotoc County.

Ada offers a multitude of events throughout the year to attract visitors. The annual Oklahoma High School Rodeo finals are conducted in the Pontotoc County Agri-Plex, located just south of the airport. It's location makes it an ideal location for many large businesses, such as Pre-Paid Legal Services, to conduct annual meetings. In May each year, Ada hosts a town festival that includes arts, crafts, entertainment, food and games. Several blocks of historic Main Street are blocked to traffic as thousands of visitors stroll from one booth to another.



Terry Hall
Airport Manager



◀ **Timers (L to R) Don Childers, Bill Bailey, Reese Scott and Stan Compton**



Maxcine Albright
Stop Chairman



Vera & Red Brend
FBO



Mike Halverson and Terry Hall - Transportation



◀ **A one-of-a-kind Mobile Flight Service Station (MFSS) will be on site at Ada to provide weather briefings, flight plans, and inflight services. The MFSS is an award-winning customer service project of the McAlester, Oklahoma, AFSS. Housed in a travel trailer and staffed by AFSS employees, the unit has been a prominent part of airshows and fly-ins throughout the state since October of 1995. During the Air Race Classic, contact "Ada Radio" on 122.55.**

L to R: Mike Webber, ATCS, 99 Jo Neal, MFSS Op. Mgr. and Jon Wright, ATCS.

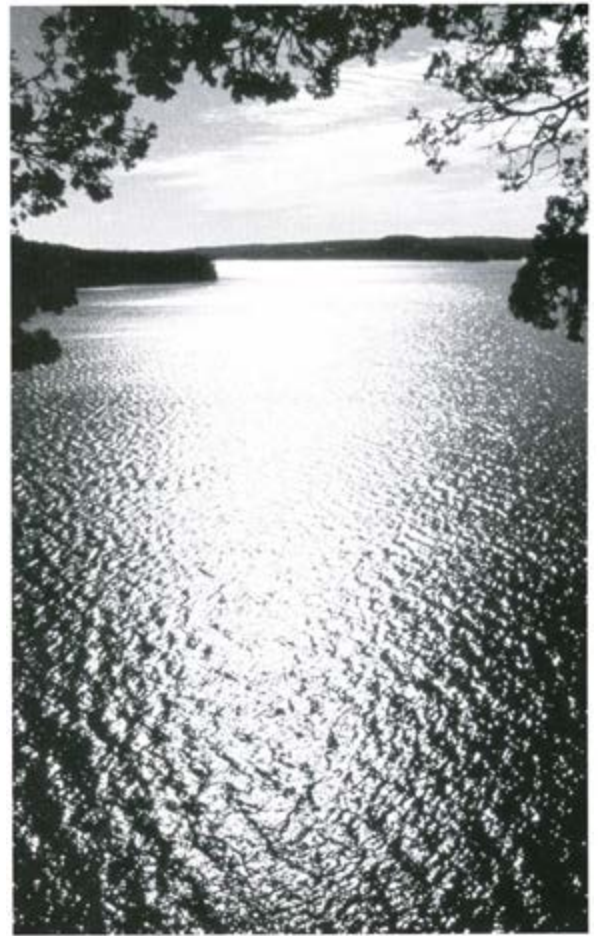
Kaiser Lake

Welcome to the Lake of the Ozarks

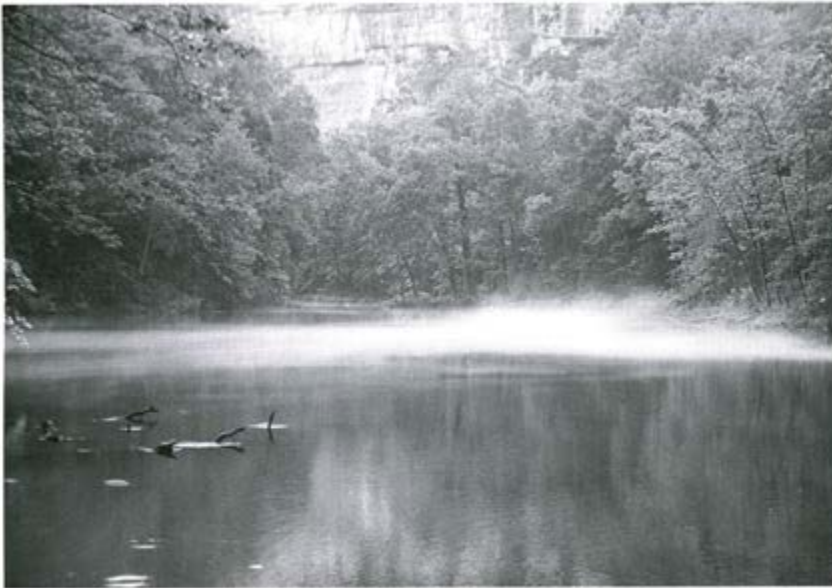
With more than 1,150 miles of scenic shoreline, more than the entire state of California, the Lake of the Ozarks offers visitors gallons (650 billion to be exact) of fun and adventure.

Nestled amidst the rolling hills of central Missouri, the Lake of the Ozarks is mid-America's premier vacation, golf and recreation destination. Because of its size and expanse, the Lake literally offers something for everyone. Whether you're looking for fast-paced action or a peaceful escape from the rigors of life, this 54,000-acre lake area is a perfect spot for a family vacation, romantic get-away or to enjoy its many amenities with a group of friends.

On and off the Lake, the choices are limitless. The Lake boasts some of the top fishing and golfing in the Midwest, and offers an abundance of water activities and other recreation such as horseback riding, tennis, hiking, bird-watching and trap shooting. Throughout the year the Lake offers a lineup of exciting family activities ranging from special festivals and events, spectacular cave tours and live country music shows to great shopping, craft shows, and some of the most challenging mini-golf anywhere.



◀ Ha Ha Tonka Springs



Carl Mittelhauser
AFSS
Columbia

Mobile Flight Service Station
Flight Plan Filing
At Site Weather Briefings
Mass Weather Briefings
Flight Plan Canceling

Charlotte Stark
Manager

Ken Hammer
Director

Mary Pounds
Timer



Bill & Evelyn Braese
Timers



Freeport

Small town living with big business appeal! Freeport has a long rich heritage which goes back to the mid 19th century. From it's earliest days Freeport has always been a place where new comers are greeted warmly and new business welcomed. Over the past few decades Freeport has become home to the head quarters, or major division, of four fortune 500 companies. Because of the concentration of commerce and industry, Freeport attracts business professionals from across the country. They appreciate the opportunity to experience small town living in an environment where there's a focus on recreation when the day's work is done. The City of Freeport is located along the banks of the Pecatonica River in northwestern Illinois. It is 120 miles northwest of Chicago, 60 miles east of the Mississippi River and 25 miles south of the Wisconsin border. Freeport and Stephenson county provide more than 700 acres of park land. Many housing developments centered on lake or golf courses; and just enough distance to the big cities of Rockford, Chicago, and Madison to make them convenient without daily traffic, noise and congestion problems. Freeport's Albertus Airport is large enough to accommodate our fortune 500 companies corporate aircraft but small, enough to offer Midwest's friendly service.



Water Falls in Krape Park



Darrell Janssen
Airport Manager



Angie Janssen
Office Manager
Stop Chairman



Jerry Hose
Chief Flight Instructor



Aircraft Mechanics - (l to r)
Don Miller and Dwight Dender



Site of Lincoln - Douglas
Debates August 27, 1858



Mary Lou Wright
Timer



Martha Plowman
Timer



Lu Etta White
Timer



Ruth Swanstrom
Timer

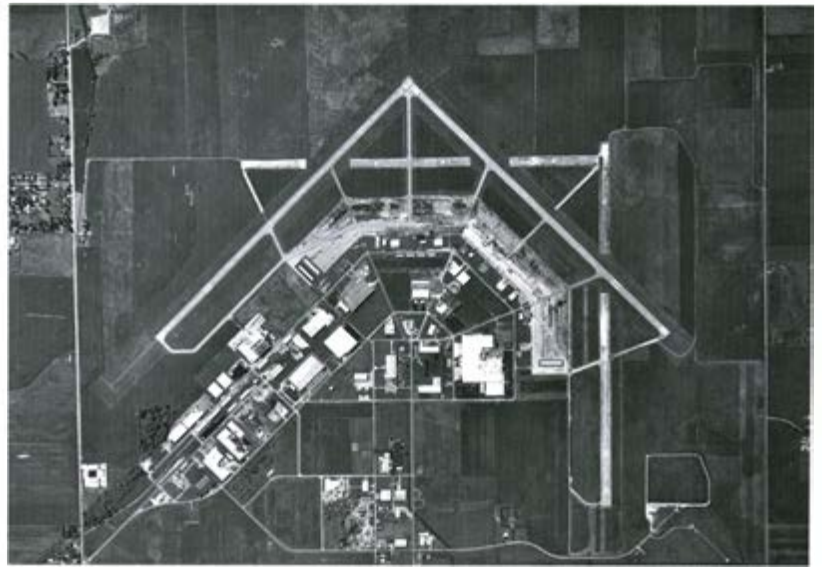


Serkan Filiz
Line Service

Raymond Whitaker
AFSS
Kankakee

Seymour

Welcome to Seymour, Indiana! Located in South Central Indiana, Seymour is located at the intersection of Highways U.S. 50 and Interstate 65, halfway between Indianapolis, IN and Louisville, KY. Our location places us within 800 miles of 80% of the United States population. We have easy access to major college sporting events, professional sports, nationally recognized museums, art galleries, theater, concerts and many other big city attractions as we are just a short drive from three major metropolitan areas. These are: Indianapolis, IN (1 hour north on I-65), Louisville, KY (1 hour south on I-65), and Cincinnati, OH (1½ hours east on U.S. 50).



With combined forces of city government, business, industry and community support, Seymour has gone to the forefront as a model city. Symbols of its economic development efforts include a Wal-Mart distribution center, three shopping centers and two industrial parks. Located within the confines of our industrial parks are such companies as Valeo Sylvania, Schwarz Pharma, Union Camp, R.R. Donnelley, Aisin U.S.A., Kobelco and Seymour Tubing.

Freeman Municipal Airport, formerly Freeman Army Airfield, was built in 1942 to train bomber pilots in WW II. Today it is home to over 50 based aircraft and a 300 acre industrial park that contains approximately 45 companies. The airport also plays host to a war bird fly in the last week end in March each year.



Ted Jordan
Airport Manager



Left to right: Jane Henley, Secretary; Larry Black, Line Boy; and Marge Montgomery, FBO Mgr.



Left to right: Nancy Warren, Anne Black, Esther Wyandt and Dorothy Smith - Timers

Gregory A. Grice
AFSS
Terre Haute



Mary Kay Schroeder
Timer

Flint

Whatever your lifestyle or profession, the right place to be is in the Flint Area. There are more than 17 unique communities within these boundaries, with distinct personalities and offerings for residents and business owners.

From rural regions to upscale towns, tiny villages to thoroughly modern cities, the area meets the needs of a population of 436,000 people. The area is listed as having one of the highest median family income rates in the country and our shopping and business districts are among the state's busiest.

The major industry in the area is automotive. The Flint area is home to 22 General Motors facilities and many suppliers. Flint is the largest city in the county with a population of 135,000. Today, manufacturing retail and service industries combine to provide a more diversified economy throughout the area.

Health care is a major industry in the area. There are several respected medical centers serving

the community: Genesys at Health Park, McLaren Regional Medical Center, Hurley Medical Center and Lapeer Regional Medical Center.

Institutions of higher learning provide many jobs and a significant contribution to the local economy and culture. The University of Michigan-Flint, Kettering University, Mott Community College and Baker College are the major educational centers in the county. The Genesee Intermediate School District oversees 21 school districts in Genesee County and there are several private school options to consider as well.

This part of the state experiences all four seasons in complete splendor: Summer temperatures range from 73 to 88 degrees; fall's brilliant colors shine in 46 to 66 degree temperatures; winter brings snow for all kinds of outdoor sports as well as temperatures ranging from 35 to 0 degrees (sometimes lower!), and in spring, 50 to 70 degree temperatures coax the tulips and apple trees into bloom.

Recreation usually involves being outdoors in this mid-Michigan playground. Parks and public lakes provide easy access for boaters and hikers, and there are prime hunting and fishing locations in the region as well. Native wildlife includes deer, raccoons, squirrels, robins, cardinals, bluejays, opossum, and more.

In the county, each separate community relishes its individuality and has something unique to offer its residents, be in quiet living, parks and recreation opportunities, unique shopping or historical roots. Those who love to be close to nature, yet enjoy the conveniences of modern cities will find the greater Flint area community to be an ideal place to live and work.



James L. Rice
Airport Director



Bishop International Airport



Timers
Linda Haynes
Gini Sutherland
Clarice Vasold

Ed Simpson
AFSS



Toronto



The capital city of Ontario, Canada's largest province, Toronto is one of the world's most exciting cities and a premier tourist destination. With a population of close to three million, Toronto is located on the north shore of beautiful Lake Ontario – about an hour away by jet from New York City, Chicago, Boston, Cleveland, Pittsburgh, Cincinnati and Montreal.

Toronto is home to numerous cultural attractions such as the Royal Ontario Museum; the Art Gallery of Ontario; the Gardiner Museum of Ceramics; the Bata Shoe Museum; the Royal Alexandra, Princess of Wales, Winter Garden and Pantages theatres, as well as the Hummingbird Centre, St. Lawrence Centre and Ford Centre for the Performing Arts. The world famous Toronto Symphony Orchestra and Canadian Opera Company both play at Roy Thomson Hall. Many musicals and plays destined for Broadway and beyond have their opening performances in Toronto.

Sports franchises include former World Series champion Toronto Blue Jays, the NHL's Toronto Maple Leafs and the NBA's Toronto Raptors. The Hockey Hall of Fame is one of Toronto's best known attractions.

Science buffs can visit the exciting Ontario Science Centre and participate in a variety of interactive displays and exhibits.

Toronto is also Canada's movie capital with dozens of major international features being shot on location. With its cosmopolitan atmosphere and outstanding architecture, the city often substitutes for New York and Chicago.

The Toronto waterfront is home to Harbourfront, a multi-use, year round facility that boasts shopping, marinas, museums, theatres, antique markets, restaurants and the Toronto City Centre Airport.

Toronto is the financial and media capital of Canada with head offices for most banks and other financial institutions. The city publishes four daily newspapers – two local and two national – and is home to five television stations and more than 20 radio stations.

Toronto is home to three universities: the University of Toronto, York University and Ryerson Polytechnic University, as well as numerous schools and community colleges.

For those who relish the outdoors and nature, Toronto presents a series of spectacular ravines with a variety of wildlife. There are hiking, biking and rollerblading trails, as well as ski resorts, nature preserves, bed and breakfasts, theatre festivals and Niagara Falls – all within driving distance of the city. Toronto's famous Metro Zoo is well worth a visit for the whole family.

Toronto is one of the most multicultural cities on the face of the planet, and offers visitors the delights of numerous ethnic cuisines as well as the pageantry of various festivals that draw visitors from around the world. Toronto's famous Chinatown is the largest in North America. The city's Italian population makes it the third largest "Italian city" in the world. Tourists can drink in Old World flavor in either of Toronto's famous food markets: Kensington Market and St. Lawrence Market, where a variety of fresh local and ethnic delicacies abound.

It's no wonder that Toronto has been rated as one of North America's top tourist destinations.



Bill Yule
Airport Manager



Jack Quinn
Airport Supervisor



Jean Hancher
Timer



Anna Pangrazzi
Timer



Bev Bakti
Timer



Shell Aerocentre - East



Margaret Fraser -
CSR - Shell
Aerocentre

Hugh Loraine
AFSS

Frank Bruzzese
Tower Manager

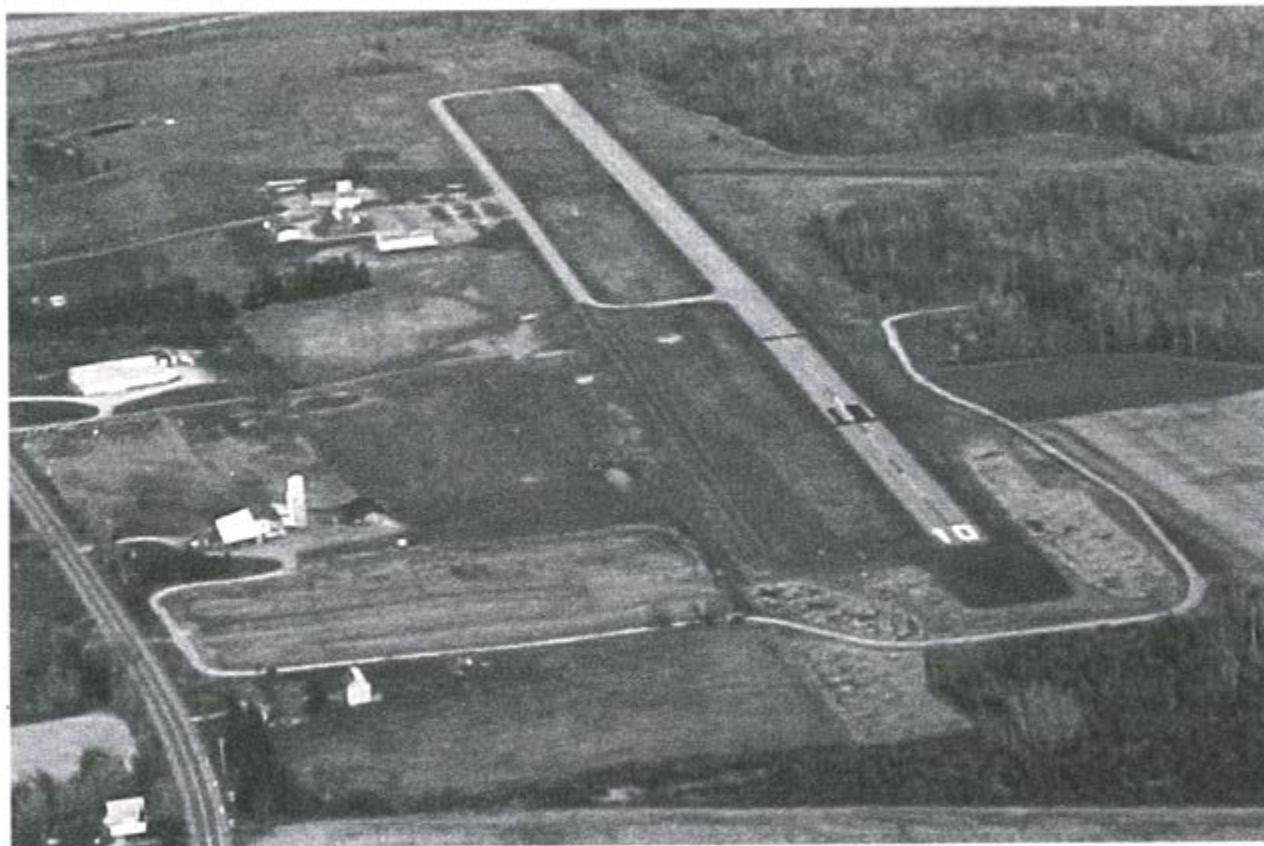


L to R: Mike Daves,
Refueller and **Vanessa**
Donner, CSR - Shell
Aerocentre



Margo McCutcheon
Stop Chairman

Perry-Warsaw, New York



Joan McCombs
Timer



Janet Morrison
Timer

Reo Rood
Director



*We Appreciate
Race Route Charms*

Willoughby

The history of Willoughby begins in the meeting of two roads: Euclid Avenue and River Road. They meet in downtown Willoughby and follow two Indian trails. Today, Willoughby's accessibility via two major highways in an expanding, metropolitan region powers its growth and development. Willoughby is a part of the Greater Cleveland Metropolitan Area, 16 miles east of Cleveland along the shoreline of Lake Erie in Lake County.

This city of ten square miles, 21,734 inhabitants and 9,000 homes, has 14,100 jobs, almost two for every household – a healthy economic ratio. Willoughby is home to one of the few general aviation airports in the region, Willoughby Lost Nation Municipal Airport. Considered by the FAA to be a "reliever" airport to Cleveland Hopkins International Airport, it serves many corporations located in



Lost Nation Airport

Photo courtesy of Kucera International Inc.

the adjacent industrial parkways as well as 30 surrounding communities.

During your stay in Willoughby, take time to visit the picturesque downtown historic district with its many shops and restaurants. The Willoughby Chamber of Commerce welcomes Air Race Classic participants by offering discount cards to be used when making purchases at member establishments.

Nearby, you may visit "Lawnfield", the Mentor home of U.S. President James A. Garfield, reopened in June 1998 after a \$12 million renovation restored it to its 1880's splendor. The Holden Arboretum in Kirtland, largest arboretum in the United States, has 3,100 acres of gardens, collections and trails as well as a visitors center and gift shop. Lake Farmpark in Kirtland was voted the best outdoor park in America.

A warm welcome to each of you from the terminus sponsors, the International Women's Air & Space Museum now located at Burke Lakefront Airport in Cleveland, and the National Exchange Club who sponsored the 1929 Women's Air Derby!

Terminus Sponsors
International Women's Air & Space Museum
and
National Exchange Club

Thanks to the following:
Cleveland Zonta Club
U.S. Aviation Museum
Experimental Aircraft Assn. Chapter 118
Civil Air Patrol Squadron 409
Lost Nation Aviation
Jay Rizzo, A.I.
Kucera International Inc.
Chris Hess of U.S. Rep. Steve LaTourette's office
Lake County Convention & Visitors Bureau



Holden Arboretum



Lake Farmpark



Chalet Debonne Winery



"Lawnfield", home of U.S. President James A. Garfield



Terminus Committee members (l to r) Connie Luhta, Joan Hrubec and Rose Kundmueller



David Anderson
Mayor



Fire Marshall Carl Lewis and Lost Nation
Airport Manager Bill Pfarr.

Jim & Janet Landfried
Scorers

Janet Landfried
Judge



Anne Shields
Judge



Joan Hrubec
Judge



Pat & Don Fairbanks - Timers



Marcia Greenham
Timer

AIR RACE CLASSIC

1999 Handicaps

For aircraft with modifications send copy of STCs with Form # E-02 and handicaps will be issued at that time

MAKE/MODEL	HP	MPH	KNOTS	MAKE/MODEL	HP	MPH	KNOTS
BEECHCRAFT				Skyhawk R 172K XP	195	132	115
Baron C55 & D55 & E55	570	220	191	Skyhawk 172SP	180	130	113
Baron A55 & B55	520	213	185	Skyhawk 172Q	180	129	112
Duchess 76	360	175	152	Skyhawk 172 P	160	121	105
Travel Air B95A & E95	360	185	161	Skyhawk 172 R ('97)	160	125	109
Bonanza 36 & A36 (6 Seats)	285	183	159	Skyhawk 172 N	160	120	104
Bonanza 36 & A36 (4 Seats)	285	184	160	Skyhawk 172 M	150	119	103
Bonanza V35A & 35B	285	182	158	Skyhawk 172 I-L	150	115	100
Bonanza V35	285	182	158	(172-I-L - NOT eligible with Prop # IC172/MTM 7553)			
Bonanza S35	285	183	159	Skyhawk 172 ('62-'67)	145	112	97
Bonanza C33A - F33A	285	182	158	Skylark 175	175	122	106
Bonanza P35	260	179	156	Skyhawk 172 (fixed pitch)	160	120	104
Bonanza G33	260	177	154	Skyhawk 172 (fixed pitch)	180	129	112
Bonanza M35	250	178	155	GULFSTREAM COMMANDER (GRUMMAN AMERICAN & ROCKWELL COMMANDER)			
Debonair 33-E33	225	165	143	Cougar GA-7	320	173	150
Sierra C24R ('82-)	200	143	124	Rockwell Commander 114	260	168	146
Sierra B24R & C24R ('77-'81)	200	142	123	Rockwell Commander 112B	200	147	128
Sierra A24R	200	144	125	Rockwell Commander 112A	200	145	126
Musketeer A23/24	200	132	115	Rockwell Commander 112	200	144	125
Musketeer C23 Sundowner	180	123	107	*American General Tiger	180	143	124
Musketeer A23 II & III	165	120	104	*Grumman Tiger AA5B	180	142	123
Musketeer 23	160	118	103	*Grumman Tiger AA5B (Sensenich propeller)	180	145	126
Musketeer Sport A23-19 & B19	150	115	100	*Grumman Cheetah AA5A	150	134	116
Musketeer B23 & C23 Custom	180	124	108	*Grumman Traveler AA5A ('-75)	150	128	111
BELLANCA				*Grumman Traveler AA5A	150	119	103
Super Viking 17-31A (1978)	300	171	149	MAULE			
Super Viking 17-31 & 17-31A ('-77)	300	169	147	M-5 235C	235	140	122
Super Viking 17-31 (Vikings - Lycoming only)	290	167	145	M-4 220C	220	137	119
Bellanca 14-19-3 A-C	260	167	145	M-4 210C	210	135	117
Decathlon 8KCAB	180	120	104	M-5 180C	180	128	111
Citabria 8GCBC	180	120	104	MEYERS			
Citabria 7KCAB & 8KCAB	150	119	103	200D	285	185	161
Citabria 7GCBC & 7GCAA	150	118	103	200 A-C	260	182	158
CESSNA				Navion A	225	144	125
Cessna 310 D	520	208	181	MOONEY			
Cessna 310 R	570	216	188	M201J and M20J	200	176	153
Cessna 337 G-Q	520	209	182	Executive M20F	200	162	141
Cessna 337G	420	180	156	Chaparral M20E	200	161	140
Cessna 337 A-F	420	175	152	Master M20D	180	126	109
Centurion 210 J	285	182	158	Ranger M20C	180	149	129
Centurion 210 G&H	285	181	157	Statesman M20G	180	147	128
Centurion 210 F	285	176	153	PIPER			
Centurion 210 D&E	285	177	154	Aztec PA23-250 ('77-)	500	196	170
Centurion 210 B&C	260	172	149	Aztec PA23-250 ('-76)	500	194	169
Cessna 205 & A	260	143	124	Seneca PA-34	400	177	154
Super Skywagon U-206A & B	285	148	129	Seminole PA44-180	360	172	149
Skywagon 185 A-E	260	149	129	Twin Comanche PA-39	320	187	162
Skylane R182 RG	235	162	141	Twin Comanche PA-30 & B & CR	320	186	162
Skylane 182S ('97)	230	147	128	Twin Comanche PA-30 C	320	184	160
Skylane 182Q	230	145	126	Lance PA32 RT-300	300	171	149
Skylane 182P ('75-'76)	230	146	127	Lance PA32-R-300	300	172	149
Skylane 182P ('-74)	230	144	125	Cherokee 6 PA 32-300 ('78-)	300	156	136
Skylane 182R	230	146	127	Cherokee 6 PA 32-300 ('-77)	300	150	130
Skylane 182 D	230	142	123	Cherokee 6 PA 32-260 ('78)	260	151	131
Skylane 182 E-N	230	144	125	Cherokee 6 PA 32-260 ('-77)	260	145	126
Cessna 180 E-K	230	146	127	Comanche PA 24-400	400	200	174
Cardinal RG 177 ('77)	200	154	134	Comanche PA 24-260 B-C	260	174	151
Cardinal RG 177 ('74-'76)	200	153	133	Comanche PA 24-250	250	170	148
Cardinal RG 177 ('71-'73)	200	150	130	Comanche PA 24-180	180	145	126
*Cardinal 177B II ('77-'78)	180	135	117	Cherokee Dakota PA 28-236	235	150	130
*Cardinal 177B II ('75-'76)	180	134	116	Cherokee Dakota PA 28-235 B-F (const. speed)	235	145	126
*Cardinal 177B ('70-'74)	180	130	113	Cherokee Dakota PA 28-235 B-F (fixed pitch)	235	144	125
*Cardinal 177A	180	129	112				
*Cardinal 177	150	119	103				
Cutlass 172 RG	180	142	123				

Charger & Pathfinder PA 28-235	235	144	125	ROCKWELL			
Arrow PA 28R-200 IV	200	149	129	Lark 100L	180	115	100
Arrow PA 28R-200 III	200	150	130	Darter 100	150	108	94
Arrow PA 28R-200 II	200	149	129	WACO			
Arrow PA 28R-200	200	148	129	Classic YMF	275	114	99
Arrow PA 28R-180	180	144	125	WING			
*Archer PA 28-181 ('78-'79)	180	133	116	D-1 Derringer	320	192	167
*Archer PA 28-181 ('76 & '77)	180	131	114	VARGA			
*Archer PA 28-181 ('74 & '75)	180	130	113	Kachina ('80)	150	116	101
*Challenger PA 28-180 (1973)	180	129	112	AEROSPATIALE			
*Cherokee PA 28-180 B-G	180	128	111	Trinidad TB20	250	171	149
*Cherokee PA 28-180	180	127	110	Tobago TB10	180	135	117
*Warrior PA 28-161 II ('83-)	160	127	110	Tampico TB9	160	120	104
*Warrior PA 28-161 II	160	126	109				
*Warrior PA 28-161	160	125	109				
*Warrior PA 28-151	150	118	103				
*Cherokee PA 28-160 C	160	125	109				
*Cherokee PA 28-160 & B	160	120	104				
*Cherokee PA 28-150 C	150	118	103				
*Cherokee PA 28-140	150	116	101				

*Without steps add 1 knot (**0.87 kt**) to handicap.
 Slimline strobe replacement add 1/2 mph (**0.43 kt**) to handicap.
 Enclosed Antennae add 2 knots (**1.74 kt**) to handicap.

DESIGNATED AIRPORTS ON THE ROUTE 1999

AIRPORTS	STATUTE MILES	NAUTICAL MILES
ELP El Paso International, El Paso, Texas		
SJT Mathis Field, San Angelo, Texas	347.29	301.79
ADH Ada Municipal, Ada, Oklahoma	324.87	282.30
AIZ Lee C Fine Memorial, Kaiser/Lake Ozark, Missouri	322.52	280.26
FEP Albertus Airport, Freeport, Illinois	326.49	283.71
SER Freeman Municipal, Seymour, Indiana	299.56	260.31
FNT Bishop International, Flint, Michigan	301.01	261.57
CYTZ Toronto/City Centre, Toronto, Canada (must stop)	223.16	193.92
01G Perry-Warsaw, Perry, New York (fly by)	91.30	79.34
LNN Willoughby/Lost Nation, Willoughby, Ohio	185.77	161.43
Total Statute Miles		2,421.97
		2,104.63

1999 GENERAL INFORMATION

* Inspection Opens at Start.....	Saturday, June 19	08:00 MDT
* Arrival Deadline	Saturday, June 19	11:00 MDT
Aircraft Inspection Closes (Saturday inspection preferred)	Sunday, June 20	14:00 MDT
Take-Off Banquet MANDATORY	Sunday, June 20	19:00 MDT
First Time ARC Racers Clinic MANDATORY	Monday, June 21	08:00 MDT
All Contestants Briefing MANDATORY	Monday, June 21	10:00 MDT
Safety Seminar MANDATORY	Monday, June 21	13:30 MDT
Annual Air Race Classic Meeting.....	Monday, June 21	14:30 MDT
Take-Off Breakfast.....	Tuesday, June 22	06:00 MDT
All Contestants Briefing MANDATORY	Tuesday, June 22	06:30 MDT
Take-Off	Tuesday, June 22	08:00 MDT
Finish Deadline	Friday, June 25	17:00 EDT
Score Sheet Signing By: MANDATORY	Saturday, June 26	15:00 EDT
Contestant Debriefing MANDATORY	Sunday, June 27	09:00 EDT
ARC Awards Banquet MANDATORY	Sunday, June 27	19:00 EDT

NOTE: For any changes or additions after Entry Closing Deadline
see ARC Rules Section F.L.H.I.

*On arrival, inspection appointment will be assigned.



DEBBIE REAVIS
El Paso, TX

FONDA HIVICK
El Paso, TX



PAULA RUMBAUGH
Columbus, OH

JANE McINTIRE
Delaware, OH

CLASSIC 1
Cessna 172M 150 hp

Fonda, employed by the Internal Revenue Service – Criminal Investigation Division and currently working on a health care fraud task force with other Federal and State agencies. Instrument – two jumps – 560 hours.

Assistant High School Principal in the El Paso Independent School District, Debbie and Ronald have one child.

No matter what the problem – how large or small the city – these two will find fun – flying their fifth Classic – El Paso 99s.

CLASSIC 2
Beechcraft E33 225 hp

Sponsored by:
PPG Industries
Delaware, OH
(Paint coatings and resins)
Process Control Services
Plymouth, MI
(Computer systems repair)

This team got hooked on the Classic seven years ago, and have flown every one since!

Janie has 780 flying hours. When not at her home airport in Delaware, she can usually be found at any other of Ohio's many airports, as she is Manager of Aviation Programs for the Office of Aviation, Ohio Department of Transportation. Husband Woody is also a pilot, and an instructor, so most anywhere Janie turns she's surrounded by aviation "types".

Paula, Instrument rated with 825 hours, flies for relaxation, revitalization, and reaffirmation. (During the race, she reads mysteries and listens to music to relax!) A librarian, she manages product requirements and database specifications for OCLC, Inc.'s online reference service.

Members of the Scioto Valley 99s Chapter, both women especially value the camaraderie offered by the Air Race Classic. Viewing the race always as a learning experience, Janie and Paula look forward to this year's lessons!

In appreciation to:
Cleveland Zonta Club
U.S. Aviation Museum
Experimental Aircraft Assn. Chapter 118

Best Wishes
Air Race Classic Contestants
from
Chuck & Gretchen Reed
Pheasant Run Airport
Madison, Ohio

Sincere thanks to:
Manair Co.
Herb Tanner
Lisa Burrow
West Texas Airport
Advanced Avionics
El Paso Sky Divers



JUDY BOLKEMA-TOKAR
Daytona Beach, FL

ESTHER LOWRY
Dillard, GA



DOTTIE ANDERSON
Bluffton, OH

JEAN SLOAN
Lima, OH

CLASSIC 3
Cessna 182S 230 hp

Judy – sixth Classic – Instrument – 1600 hours – North Jersey 99s. Employed by JST Services, Inc., Judy, formerly taught Elementary, High School and Adult art classes and a teacher of emotionally disturbed classes. Husband John (also pilot) thinks Judy's preparation for the race great fun. Together they have five children and nine grandchildren (Judy's latest granddaughter born on last day of '98 race). Judy serves as Vice Governor of NY/NJ Section 99s – trustee Ninety-Nines 21st Century Fund – cooking, quilting, painting, flying – keeps her busy!

Esther – 22nd Classic – Commercial and Instrument – 6000+ hours – Deep South 99s. Carl, retired, and Esther have five children, seven grandchildren and four great grandchildren. A consultant in the hospitality industry, her other interests include church work, silk painting, basket weaving, cooking, traveling and serves on the City Council at Sky Valley.

CLASSIC 4
Piper PA28-181 180 hp

Sponsored by:
Mike Cameron
Bronston, NY
(Cameron Packaging Co.)
Sloan's Trucking
Lima, OH
(Over the Road Trucking)

Dottie retired from managing FBO after 50 years, but not quite retired from Flight Examiner and Flight Instructing. Nearly every day keeps her busy with flight checks, Instrument Proficiency checks and BFR's. FAA examiner, Commercial, single/multi land, Flight Instructor Airplane/Instruments/Multi engine, Advanced/Instrument Ground Instructor – 40,000+ hours (promises to add her log books – one of these days) – 20th Classic – amateur Radio (W80VV) – 50 year member of All-Ohio 99s.

Jean with 700+ hours flying her 18th Classic. She and husband Virgil (also pilot) own and operate a trucking company where Jean works as office manager – four children (one pilot) and six grandchildren. They have his and her airplanes – his a 160 HP Tri-Pacer – hers a Cherokee Archer – both active in the Short-Wing Piper Club. Member of All-Ohio 99s.



Best Wishes To The Air Race
Classic Contestants From
Hutter Racing Engines Ltd.

Be Sure To Visit Our Website At
www.huttermotorsports.com



NANCY TOON
Atlanta, GA

SUSAN COLLER
Bloomington, IN



JEAN SCHIFFMANN
Battle Ground, WA

BEVERLY FOGLE
Vancouver, WA

CLASSIC 5
Meyers 200D 285 hp

Susan with Commercial, single/multi land, single sea, Instrument, 2800 hours and flying her 10th Classic. A corporate pilot for Asset Management Services, Susan and husband Don, property management, have two children. Races because she enjoys meeting so many amazing women.

Nancy – 13th Classic – 3800 hours – airline transport, single/multi land, flight Instructor Airplane/Instruments/multi engine, Advanced/Instrument Ground Instructor – North Georgia 99s. A homemaker, she taught flight for several years and now occasional BFR's. She and Ralph, retired General Contractor and Developer, have three children (son-in-law pilot) and four grandchildren. Raced sailboats prior to her interest in racing airplanes – and plays guitar and mandolin.

CLASSIC 6
Cessna 172M 180 hp

Bev flying her second Classic with Commercial, flight Instructor Airplane/Instruments, Advanced/Instrument Ground Instructor has acquired 3190 hours. A Certified Financial Planner, she owns a small investment advisory firm, Cambridge Financial Management Corp., specializing in retirement and estate planning for individuals. Finds racing a challenge to maximize performance of her airplane. Neither of two children pilots.

Sunny – Commercial, single/multi land, single sea, Flight Instructor airplane/Instruments, Basic Ground Instructor – 10,120 hours – 7th Classic. A self-employed Flight Instructor, she teaches Instrument and gives Flight Reviews. Mother of four children (one pilot) and three grandchildren.

This team members of Columbia Cascades 99s.

*A big thank you to
John Elliott, Manager
Terminal/FSS
Operations and Procedures*



**Best Wishes & Good Luck
on the race.**

**Looking forward to seeing you
at the Fall 2000 NC Section
Meeting in Columbus, OH.**

ALL OHIO CHAPTER 99s





DENISE WATERS
New York, NY



BONNIE PORTER
Brentwood, NH



MAROLYN WILSON
Whitesboro, NY

ELAINE ROEHRIG
Deerfield, NY

CLASSIC 7
Grumman AA-5B 180 hp

Sponsored by:
Brentwood Power Equipment
Brentwood, NH
(Farm and garden implements, sales and repairs)
Hampton Airfield
North Hampton, NH
(Privately owned public use airfield and flight school)
Kingston Family Practice
Kingston, NH
(Medical Practice)
Trends Gift Gallery
Exeter, NH
(Fine gifts)

Flying her fourth Classic, Denise with Commercial, single/multi land, Instrument has acquired 1300 hours. President of Air, Land and Sea, Ltd., she has semi-retired from previous careers in Music and Telecommunication Management and Computer Design, and currently focusing on completing the construction of her experimental aircraft. When not out flying or working in the hangar, she gets in time on the water providing sailboat delivery/charter services. New York/New Jersey Section 99s claims Denise.

A warm welcome to Bonnie flying her first Classic. A full time Middle School Art teacher for Haverhill Public Schools and also an Aviation Education Volunteer, she and husband Walter (also pilot), manufacturing Manager for Hewlett Packard, have two daughters. Toured England in '98 performing five concerts with New Hampshire Women's Chorus – grass air strip and a J3-Cub at their New Hampshire farm – recipient of the 1998 Phillips 66 Young Eagles Leadership Award – wears a family heirloom diamond from the Titanic in her engagement ring (WOW!) – member of Eastern New England 99s.

CLASSIC 8
Piper PA28-140 150 hp

Sponsored by:
Charles "Chick" Roehrig
Deerfield, NY
(Retired Air Force "Hump" Pilot and
Mechanical Engineer)
Holland Farms Bakery and Deli
Yorkville, NY
(Retail bakery and deli)

Elaine, manager for USAF Flight Center, Hanscom AFB NAF – Flight and Ground Instructor for 54 years – FAA Safety Counselor for 28 years. She and Chick, retired Air Force Pilot and Mechanical Engineer, have three children (one pilot), six grandchildren and two great grandchildren. Commercial, Instrument, Flight Instructor Airplane, Advanced/Instrument Ground Instructor – 12th Classic.

Marolyn is the co-owner of Holland Farms Bakery and Deli. She volunteers with the Heart Association, helping to raise \$850,000 during Heart Weekend '99. She is also active with the Chamber of Commerce and local hospital activities. Choreographing musicals and 23 years of teaching aerobics keeps her grounded when not flying with Elaine. Marolyn has two children, and just produced the second "wedding of the century" for daughter Tricia and new son-in-law, David. This is Marolyn's 12th Air Race Classic, and looks forward to seeing her friends at "Fly Camp '99".

Both members of Central New York 99s.

Much appreciated –
Chris Hess of U.S. Rep. Steve LaTourette's Office

A special thank you from all of us
Jeppesen
Rhonda Larance



JOYCE WELLS
Larkspur, CA

KATHY WALTON
Clearlake, CA



JACKIE DONALDSON
Bayshore, NY

HELEN SWALLOW
Bimini, Bahamas

CLASSIC 9
Cessna 182Q 230 hp

Joyce with Commercial and Instrument has acquired 3300 hours and flying her 22nd Classic. Being past president of the Ninety Nines, Inc. gives her the privilege of serving as convention coordinator/meeting planner of the 1999 Annual Convention. Hal, pilot and retired Electrical Engineer, and Joyce have four children and ten grandchildren. A retired school nurse – member of Bay Cities 99s – enjoys gardening, travel, music and volunteering for the 99s.

Kathy, a Middle School Principal in Kelseyville School District, will be flying 12th Classic and member of Santa Rosa 99s. Pilot husband Richard, retired, and Kathy are avid Oakland Raiders fans and attend all home games – well that leaves this editor no choice – Go Cowboys!

CLASSIC 10
Piper PA28-161 160 hp

Sponsored by:
Babylon Iron Works, Inc.
W. Babylon, NY
(Structural steel fabrication shop)
Zephyr Aircraft Engine, Inc.
Zephyrhills, FL
(Aircraft engine overhaul shop)
W. J. Morse, Sr., M.D. AME
The Jet Center
(Aviation Medical Examiner)
Ft. Lauderdale, FL

A certified nurse midwife (2000+ babies), Helen is currently working part time in Ft. Lauderdale and Bradenton, FL. Eighth Classic – single/multi land, Instrument – 1300 hours – gold Coast 99s – two children. Husband Willard Morse, M.D., (retired from OB-GYN) now an Aviation Medical Examiner. About racing – Helen says “What could be a better adventure than “Fly Camp”?

Jackie “Downwind” – eighth Classic – Airline transport, single/multi land, Flight Instructor Airplane (Instruments/multi engine, 20 jumps – 3000+ hours. Employed by Babylon Iron Works, Inc., she is engaged to office manager, Raymond Zahralgan – Congratulations and best wishes! Having competed successfully in last year three-day eventing with her horse Savannah Red, Jackie has “Great Expectations” for this year’s events.

Passenger: Barbara Melot
Barbara, keep these gals on course!



Hugh J. Barrett, CLU

35403 Euclid Ave. W-2
Willoughby, Ohio 44094
440-942-4191

Best Wishes
to
ARC
Contestants

Appreciated –
Civil Air Patrol Squadron 409
Lost Nation Aviation
Jay Rizzo, A.I.



TOOKIE HENSLEY
Mohave Valley, AZ



ANNE HONER
 Mooresville, NC



ERIN CONNER
West Lafayette, IN

RAEGAN FRAZIER
West Lafayette, IN

CLASSIC 11
Cessna 172N 160 hp

Sponsored by:
Tookie's Flying Service
Mohave Valley, AZ
(Flight school)

Tookie – Commercial, single/multi land, flight Instructor Airplane/Instruments/Multi engine, one jump, Advanced/Instrument Ground Instructor – 8000 hours – Chairman of Rio Colorado 99s – 17th Classic. Flight Instructor and Owner of Tookie's Flying Service which husband Don (also pilot) shares in partnership. They have two children and five grandchildren. Why races? "I don't have a clue, I guess it just gets in your blood – for sure to see all my friends and make new ones – and we have so much fun."

Employed by Daniel R. Barry Associates as Vice President for Development, Anne works as a consultant in fund development for non-profit organizations. She and Michael, consultant engineering and pilot, have two children (son helicopter pilot) and five grandchildren. Instrument, Basic Ground Instructor – 1200 hours – Eastern New England 99s – seventh Classic.

CLASSIC 12
Piper PA28-161 160 hp

Sponsored by:
Purdue University
West Lafayette, IN
(Academic Institution)
John and Anne Swengel
Greenwood, IN

This is Raegan's second Classic, but her first as the pilot. She has acquired almost 400 hours with a Commercial, single/multi land, Instrument, Flight Instructor/Airplane. A junior with a major in Aviation Technology, Raegan races to experience a Trans-America – and Canada, too – cross-country, and to carry on the memory of Julie Swengel. Raegan loves to ride horses, run and garden.

Welcome Erin to your first classic. She is also a junior in the Aviation Technology department at Purdue University. Erin with 230 hours holds Commercial, single/multi land, Instrument. She loves doing anything that is outdoors and physical such as back packing, horseback riding and sports. And also travels overseas on mission trips.

SPECIAL THANKS TO:
Redwood Empire Ice Operations, Inc.



Painesville Flying Service, Inc.

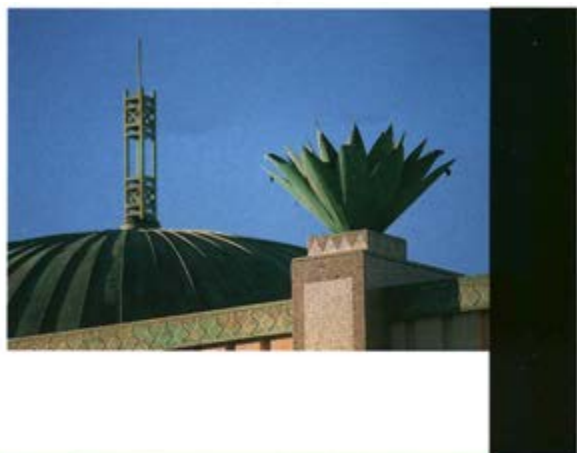
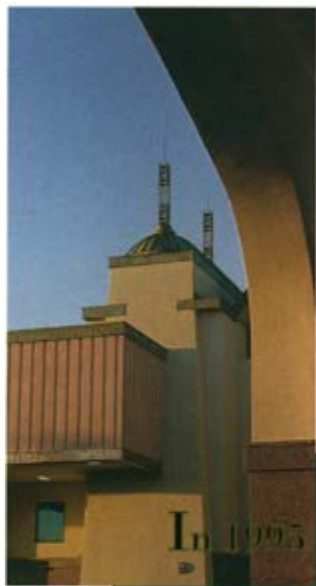
at Concord Air Park

12253 Concord-Hambden Rd.
Concord Township, Ohio 44077

(440)354-9815
(440)352-3228



Connie Luhta
President



In 1995 the airport we had known and outgrown since the
early 70's disappeared behind a wall of plywood and
scaffolding. Today in its place stands a world-class terminal

that will serve El Paso well into the next millennium. No one
has ever seen anything quite like the building's architectural
style. Yet it all seems as familiar as the mountains behind it.

That's because every important element of our history,
culture, geography and environment is embodied in the design.

**THE
NEW
EL PASO
INTERNATIONAL
AIRPORT
HAS
LANDED.**



WE'VE ARRIVED

Millions of years in the making

Local design elements and influences are everywhere you look. You'll find the Franklin Mountains in the stone base. The raised portions of the roof pay tribute to the copper industry.

Early Fort Bliss is located in the stuccoed walls and punched windows. The Spanish Missions are represented by arches over the main entrances and interior colonnades. Even the earliest nomadic natives are remembered with intriguing agave ornamentation pictographs on the signage. On and on it goes.

Here comes the pride

UTEP's Bhutanese architecture is also a design influence. In fact, nothing since Don Haskins' 1966 National Championship team has caused such an outbreak of civic pride. Partly because so many El Pasoans contributed to its success.

The design for the project was the inspiration of El Paso architect Rod Kroeger of Moore Nordell Kroeger Architects. Construction was thanks to the perspiration of hundreds of local craftsmen.

But the people who really made it happen were the airport's millions of visitors. Without their patient cooperation and support, our airport would still be many months away.

How we look to the rest of the world

The airport is the city's face to the outside world. Now we have a face befitting a leader in international commerce. It is a face that expresses pride in our past and confidence in our future. Come see it at your earliest convenience.



EL PASO
INTERNATIONAL
AIRPORT

It's a face you'll never forget.



RUTH TROTTER
Maryville, TN



DANA MOSER
Maryville, TN



MARDELL HASKINS
Overton, NV

DEBI DeHAVEN
Toledo, OH

CLASSIC 13
Piper PA28-181 180 hp

Sponsored by:
Paragon Air Express
Nashville, TN
(Part 135 Cargo)

Ruth works as First Officer for Paragon Air Express out of Nashville and also working towards a Master of aeronautical Science from Embry-Riddle at their extended campus in Ft. Campbell, Ky. Husband Mike is Captain in the U.S. army. Third Classic – Commercial, single/multi land, Instrument – 624 hours – Tennessee 99s.

Dana says her occupation – A Dilettante – (for these as uninformed as the editor – this is an admirer or lover of the fine arts – or a dabbler, a trifier, one who (pursues an art desultorily and for amusement) – for more information ask Dana! Two children (one pilot) cheer mom toward first place in the race.

Passenger: Genie Ray O'Kelley



CLASSIC 14
Piper PA28-235B 235 hp

Sponsored by:
Haskin-Main Enterprises
Overton, NV

Tenth Classic for Debi with 3100 hours holds Commercial, single/multi land, Instrument. A member-at-large North Central Section 99s, she has been a former Corporate pilot and has served on the Board of Directors of American Power Boat Association working on divisional offshore power boat races. Debi is a professional fashion model and a marketing and sales executive.

Mardell, a retired heavy equipment operator, and Fred, also pilot have eight children (one pilot) and 29 grandchildren. Learning to fly in order to air race, Mardell has acquired 1200 hours with Instrument. A member of the Las Vegas Valley 99s, she also serves as a Ninety-Nine International Director.

Passenger: Helen Keidel



Airport/Heliport
Lighting Specialists
Since 1955

Manairco Inc.
P.O. Box 111
Mansfield, Ohio 44901
(800) 524-2121
419-524-2121

manairco

In appreciation to:
Federal Aviation Administration
Flight Service Stations
Federal Communication Commission



JANET YODER
Garden Plain, KS



BONNIE JOHNSON
Valley Center, KS



CHRIS BENTLY
Littleton, CO

GRETCHEN JAHN
Eastlake, CO

CLASSIC 15
Cessna 182R 230 hp

Janet – Instrument – 2000+ hours – single/multi land – Kansas Chapter 99s – 17th Classic. A Certified Registered Nurse Anesthetist, she works as office manager for pilot husband Donald's Podiatry practice. Together they co-own Rent-It-All Corporation with Janet serving as President. Their new home with their own airstrip is wonderful! An open invitation to Yoder Airpark.

Sixth Classic for Bonnie with 465 hours. She serves as Aerodynamic Laboratory Director, National Institute for Aviation research at Wichita State University and the first woman supervisor of a large wind tunnel. Pilot husband Edwin, self-employed – Merkel Airplane Company, sends Bonnie flowers and poems at the race start and terminus (Neato!). One daughter (student pilot) – Kansas Chapter 99s (treasurer).

This crew not only has a great time getting their matching wardrobes ready for the race – it's a family affair. Vicki's husband, Jack is Janet's uncle and Julia's mother is Bonnie.

Passenger: Vicki Hunt

Passenger: Julia Galstad

Janet, Just how much help do you and Bonnie need!



CLASSIC 16
Beechcraft F33A 285 hp

Chris – Commercial, Instrument, Advanced Ground Instructor – 1243 hours. An ex-Naval Officer, she is a computer systems engineer currently employed at Raytheon Systems Company. Proud mother of two, Chris still working on Flight Instructor's Certificate so she can teach both children to fly. Races to win and challenge her pilot skills.

Gretchen holds Commercial and Instrument with 1600 hours. President of the Aegis Analytical Corporation, a software development company, she is married to Karl, a software engineer and also pilot. Races to win – cheering section of four children.

Member of the Colorado 99s this team flying their eighth Classic.

Sincere thanks and appreciation to:

Janet and Jim Landfried

Best Wishes to the Racers
from

Herb Tanner

Guinness World Record Holder
Solo Parachute Jump at Age 92





JANNA SHEA
Parker, CO

MARGE THAYER
Mesa, AZ



IRIS DEWHURST
West Kingston, RI

NORMA HAGIST
Saunderstown, RI

CLASSIC 17
Cessna 182RG 235 hp

Sponsored by:
Ronald W. Thayer
Mesa, AZ
(Retired)

Burl Teague
Mesa, AZ
(Retired)

Bob Figgins
Executive Aviation, LTD
Mesa, AZ

(Full line Cessna dealer, maintenance, training, charter)

Marge started her flying career in 1969 and now retired as chief pilot for SAS Executive Aviation. She and pilot husband Ron, retired, have nine children and 17 grandchildren. They enjoy traveling in their motor home and especially their annual Santa trip to Guaymas, MX. With Commercial, single/multi land, single sea, Instrument, Marge has acquired 3430 hours and flying 14th Classic.

Janna – Airline Transport, FAA Examiner, Flight Engineer, Flight Instructor Airplane/Instrument/Multi engine, Commercial, Glider, Jet (type-rated) 650 Citation, Falcon 10, Gulfstream IV, and B-727, Advanced/Instrument Ground Instructor – 7000 hours – second Classic. Before becoming a B-727 First Officer/Pilot Instructor for United Airlines, she worked for FAA as Operation Safety Inspector. Two children – Janna also works with aviation youth groups and one of the founders of the Fantasy of flight Formation, Denver.

This team members of Arizona Sundance 99s.

CLASSIC 18
Piper PA28-236 235 hp

Warren Hagist
Saunderstown, RI
(Professor and Norma's husband of 50 years)

Currently a Master Gardener at the University of Rhode Island and also taking advanced Plant Science courses, Iris works as a part-time data processor for her husband's software company, Boothroyd Dewhurst, Inc. She and Peter, Professor of Mechanical Engineering at URI have two children (daughter a pilot). Instrument, FAA Wings IX, one jump – 1000+ hours – Eastern New England 99s. Born in England, becoming an American in 1987, Iris caused quite a stir when she told Norma she was "goosed" at the mall. (The term "goosed" in England means you are chilly). Rhode Island Pilot's Airmen of the Year 1996 – FAA Aviation Safety Counselor since September 1996 – treasurer for RI Pilots Association.

A retired teacher of College Sociology, Norma flying her fifth Classic with 600 hours. Warren, retired Professor of Mechanical Engineering, University of Rhode Island, and Norma have five children (one son a pilot) and nine grandchildren. Hey – I remember your singing with the band at Sporty's birthday party – not bad!



Our Appreciation to:
Evelyn McLaughlin
Anne Shields
Joan Hrubec



BECKY WILLIAMS
 Agua Dulce, TX

BEVERLY VANOVER
 Alice, TX



MARY HELEN DUNNAM
 Corpus Christi, TX

SUE SIMLER
 Pearland, TX

CLASSIC 19
Cessna 172SP 180 hp

A big welcome to this Texas team flying their first Classic!

An office manager for ten years with Down Time Services, Becky is married to Doug, business manager and also pilot. With Instrument and 550 hours, Becky expects to gain experience and have fun in race. Loves all kinds of animals, arts and crafts (especially crocheting).

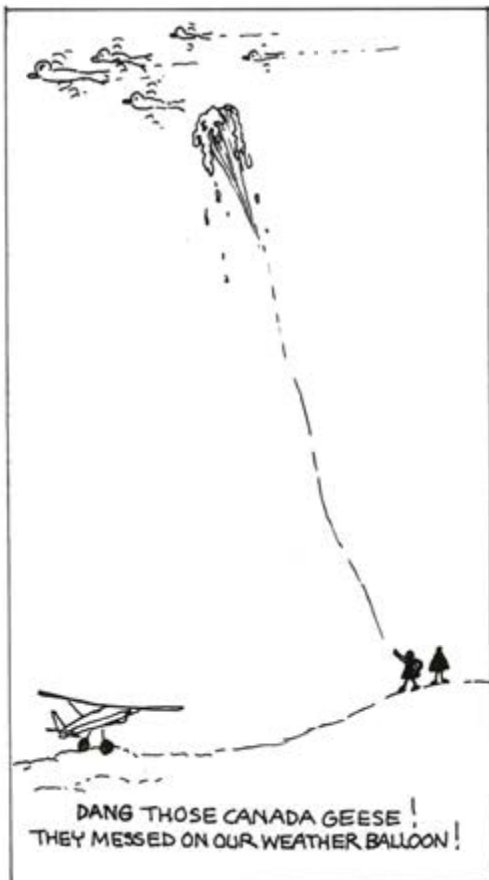
From a telephone operator to bank officer to officer manager for Jerry Smith Gallery, Beverly has retired to housewife. She and pilot husband, Johnny have one son and one granddaughter – pride and joy of their lives – making family outings very special.

CLASSIC 20
Cessna 182Q 230 hp

Mary Helen is an investor/trustee who is active in her community and church. She is President of the Del Mar College Board of Regents, on the Altar Guild of the Episcopal Church of the Good Shepherd and Chairman of the Tip of Texas 99s. Mary Helen and Sam, pilot, have one daughter and two granddaughters (Alex, competitive figure skater, Sara, actress and artist). Flies as she finds it relaxing and loves to travel. Mary Helen's 5th Classic, Instrument and 1128 hours.

Sue, originally from PA, is self-employed, currently creating a career as a mystery shopper/customer service evaluator/cat sitter or Jill-of-all-trades. Commercial, single/multi land, Advanced and Instrument Ground Instructor; 3800+ hours; flying 16th Classic. Loves cats and claims to have more cats than Pauline has dogs.

Passenger: Helen Nerod



We wish to express a very special thanks to the Stop Chairmen, Timers, Ground Crews and Judges. Without volunteering your time and talent, the race could not be ... Deeply appreciated by all the contestants.



GLORIA MAY
Kerman, CA

DENE CHABOT-FENCE
Carson City, NV



ROYCE CLIFFORD
Leucadia, CA

JACKIE SIEGEL
New York, NY

CLASSIC 21
Piper PA 28C 180 hp

Dene – Instrument – 2000+ hours – eighth Classic – 1997 "Who's Who in the World" – retired engineer – Southwest Section 99s.

Ninth Classic for Gloria with Instrument and 1690 hours. Played softball 27 years (three World Championships) – inducted in National Softball Hall of Fame in 1973 – inducted in Fresno Athletic Hall of Fame in 1982. She and husband Vernon, pilot and farmer, have one child. Fresno 99s claim Gloria.

CLASSIC 22
Beechcraft Baron 55 520 hp

Jackie, a professional investor specializing in all aspects health care, including pharmaceuticals, biotechnology and medical devices works for Deerfield Management. North Jersey 99s – 930 hours – single/multi land, Instrument – fifth Classic. Enjoys music, reading, museums, scuba and dancing.

Royce with single/multi land, Instrument has acquired 1112 hours and flying her seventh Classic. A retired surgeon, she now serves in Navy Reserves, also taking courses towards a possible career in Aerospace Medicine. Husband Brendan (pilot) practices Orthopedic Surgery. Member of Palomar 99s – enjoys Civil War reenactment, piano playing, weight lifting, running – races because it is like going to summer "Fly Camp"!

Congratulations
from the Society of Women Engineers
to the Air Race Classic!

Commemorating the
70th Anniversary of the
First Women's
Air Derby

**SOCIETY OF
WOMEN ENGINEERS**

120 Wall St. New York, NY 10005

212/509-9577

www.swe.org



- ◆ Stimulates women to achieve full potential in careers as engineers and leaders.
- ◆ Expands the image of the engineering profession as a positive force in improving the quality of life.
- ◆ Demonstrates the value of diversity.



WHY IS IT WHEN I COME HOME FROM THE
BEAUTY SHOP THE DOGS ALWAYS BARK AT ME?



LOIS FEIGENBAUM
Berryman, MO

MARGARET RINGENBERG
Grabill, IN



DAPHNE SCHIFF
Toronto, Ont., Canada

ADELE FOGLE
North York, Ont., Canada

CLASSIC 23
Cessna 172SP 180 hp

Sponsored by:
Magnus Aviation
Sheboygan Falls, WI

All Classics for Margaret – Commercial, single/multi land, Flight Instructor Airplane/Instruments/Multi engine – 40,000+ hours. A self-employed Flight Instructor since 1945, Margaret appeared on NBC Nightly News in January giving Tom Brokaw a flying lesson – and in Tom's book (bestseller) "The Greatest Generation". WASP – Indiana 99s – Round World Air Race in 1994. She and Morris, a banker, have two children (Marsha a pilot) and five grandchildren.

With Airline Transport, single/multi land, Instrument, Flight Instructor Airplane, Lois has acquired 4500+ hours and flying ninth Classic. She and pilot husband Robert are retired and have three children (one pilot) and two grandchildren. She enjoys riding her Tennessee Walker, fishing, and some really beautiful needle point (editor's note). Lois served as International President of the Ninety-Nines, Inc. From 1976-1978 and currently a member of Cape Girardeau Area 99s.

Passenger: Marilyn Copeland



Thanks –
US Customs
Texas State Tourist Information Center
Government Employees Credit Union
Columbia Healthcare System of El Paso

CLASSIC 24
Piper PA44 180 hp

Sponsored by:
Fresh America
Toronto, Ont., Canada
(Importer of fruit)

Aviation International (Canada) Inc.
Guelph, Ont., Canada
(Aviation School)

Adele with airline transport, single/multi engine, Flight Instructor Airplane/Instruments/Multi engine, Instrument Ground Instructor, 4000 hours, owns and serves as President of Aviation International. She and husband Arnie, fruit importer, have one child and two grandchildren. A regular competitor in air rallies, she has criss-crossed North American from Alaska to the Bahamas. She was a member of the only all-women team to participate in the 1986 Israel balloon race on the occasion of that country's 40th anniversary.

Daphne, a Professor of Natural Science at Glendon College, York University, teaches Meteorology and Aerodynamics. She holds Airline transport, single/multi land, single sea, Flight Instructor Instruments, Instrument Ground Instructor and 4000+ hours. Her flying trips have taken her across North American as far as Australia. Daphne and husband Harold, President Unisearch Associations, have two children and four grandchildren. When she is not flying government-sponsored pollution-monitoring flights, she is busy producing award-winning documentary science films.

Appreciation to:
Society of Women Engineers
Mary Kay Cosmetics
Activities Press, Inc.



SUZANNE AZAR
El Paso, TX

MICHELLE GARDY
Austin, TX

CLASSIC 25
Cessna R172KXP 195 hp
Mother/Daughter/Daughter Team

Suzie – Commercial, single/multi land, single sea, Flight Instructor Airplane/Instruments – 2258 hours – El Paso 99s – 2nd Classic. She works for Aero Nautique, Inc. in aviation services and investments. Pilot husband Richard and Suzie have two children (both pilots).

A warm welcome to Michelle flying her first Classic. Recently graduated from college, she works as a temp giving her more time to complete her Instrument rating – one jump – 215 hours – Austin 99s. Enjoys remodeling and repairing things in her home and has a new love – power tools.

Passenger: Christine Gardy



Sincere thanks...
Lee and Jay Cox
Elaine Needham
Don Birchum

Skin Care • Nail Care
Color Cosmetics • Aromatherapy
Gifts for Women • Gifts for Men

Call Evelyn Moore
Mary Kay Cosmetics
440-257-2793



THEA BISHOP
Holland, MI

MARY CREASON
Grand Haven, MI

CLASSIC 26
American General Tiger AA5B 180 hp

Sponsored by:
The Aero Technology Company
Grand Haven, MI

With Airline Transport, single/multi land, single sea, Flight Instructor airplane/Instruments/multi engine, Advanced/Instrument, 11,000 hours, Mary flying her 13th Classic. Self-employed she does some flight instructing, consulting and writing. Husband Bill, retired dentist, is also a pilot. Three of their four children are pilots and seven grandchildren. Mary serves as President of Michigan Aviation Education Foundation and founded Grand Haven ACE camp. Loves the competition of racing, tennis, golf and traveling.

The first Classic for Thea – and a warm welcome. For the record, this is Thea's very first air race ever with 398 hours. A retired RN, she is married to James, a physician and student pilot. Of their four children, one is a pilot, and have two grandchildren. Her three passions: two grandchildren – flying – golf!

Lake Michigan 99s sends this team.
Passenger: Mary Ivany



Special thank you –
Chevron
Chase Bank
Southwest Airlines
Carlsbad Airport



PATTY MITCHELL
Roberts, MT

GENE NORA JESSEN
Boise, ID



RUBY SHELDON
Phoenix, AZ

RUTH OLSON
Scottsdale, AZ

CLASSIC 27
Beechcraft V35B 285 hp

Sponsored by:
Boise Air Service
Boise, ID
(FBO)

Chevron Aviation
Walnut Creek, CA
(AVGAS)

Gene Nora – 4000 hours – Commercial, single/multi land, single sea, Flight Instructor Airplane/Instruments, Advanced/Instrument Ground Instructor – 2nd Classic. Flew the contiguous 48 for the Beech factory as a sales demo pilot then moved to Idaho where she and Bob started a Beech dealership. Aviation Insurance for twenty years – International past President of the Ninety Nines, Inc. Husband Bob owns and operates Boise Air Service. Two adult children and one grandchild – taught daughter to fly.

Patty – once again – Welcome to your first Classic. Patty wanted to be an airline pilot all of her life and now flies for United Airlines as F/O in B747, flying to Australia and Asia. Pilot husband Robert is a rancher and they have two children and five grandchildren. When Patty is not 8000 miles from home, she and Robert like to pack horses and hunt and fish in the mountains. Airline transport, single/multi land, Flight Instructor Airplane/Instruments/multi engine, Jet (type rated) B747 and CE500, Advanced/Instrument Ground Instructor – 16,000 hours. Both are Idaho 99s.

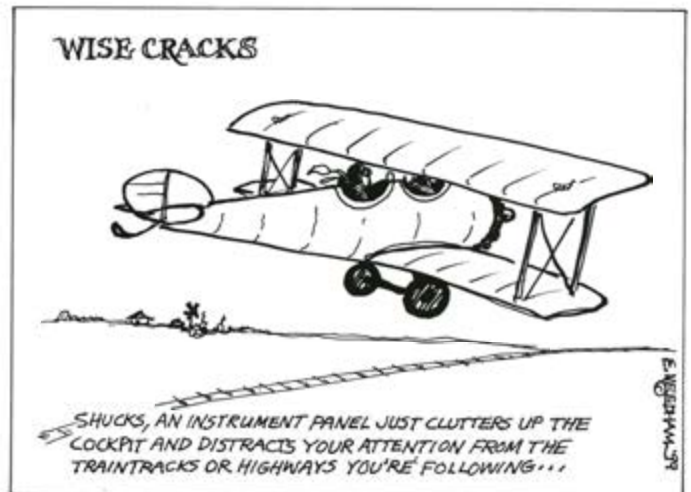
CLASSIC 28
Cessna 172R 160 hp

Ruby is flying with a new partner this year, Ruth Olsen. No – she and Marge didn't have a spat – after 13 years, they just wanted more friends to become involved. Commercial, single/multi land, single sea, Flight Instructor Airplane/Instruments/Multi engine, Commercial/Instructor Helicopter – 15,000+ hours. Ruby's Helicopter Instrument Instructor's certificate was the very first issued by the FAA. For seven years with the U.S. Geological Survey's Remote Sensing Unit, she collected environmental information, using sophisticated surplus military aircraft and equipment, from an ice island 400 miles north of the Alaskan coast to Panama Canal.

Ruth – a warm welcome to your first Classic. A retired elementary school teacher, she is now a busy volunteer, tutoring at the primary level, giving respite care for the homebound, and as a Docent for the City of Scottsdale's government offices – five children – 12 grandchildren – 10 great grandchildren – enjoys gardening, cooking, flying and traveling.

Phoenix 99s sends this team.

In appreciation to:
Lake County Convention & Visitors Bureau
Kucera International Inc.





ANNE ENGLISH
Granger, WA



ELIZABETH CHRISTIAN
Vancouver, WA



CHERYL HANSON
Wakefield, RI

SUSAN MOORE
Ft. Myers, FL

CLASSIC 29
Cessna 182N 230 hp

Anne, a teacher at Alternative High School in Toppenish School District, is married to Danny, Community Health Nurse. Member of Mid-Columbia 99s, she will be flying her second Classic with Commercial, single/multi land, Flight Instructor airplane/Instruments and 2000 hours.

First Classic for Beth – a big welcome! Economic Assistant for US Department of Labor, Bureau of Labor Statistics, Beth has two children. She designed and developed a women pilots exhibit for Western Aerospace Museum in Oakland, CA. Columbia Cascades 99s – 469 hours.

Passenger: Eva Hunt



CLASSIC 30
Withdrew







Activities Press, Inc.
7181 Industrial Park Blvd., Mentor, OH 44060
440-953-1200 • FAX: 440-951-2110
www.activitiespress.com • email: ap@activitiespress.com

Full service commercial printer serving Northeast Ohio for over 50 years. Specializing in two, four and six color printing for a wide range of corporate and industrial applications.

A special thanks to:
Lois Hailey
Joyce Wells
Glenn Buffington
Marian Prophett
Elinor Johnson



LORRIE BLECH
Beverly Hills, CA

JOAN STEINBERGER
Goleta, CA



SOPHIA PEYTON
Clearwater, FL

MARGE GORMAN
Mansfield, OH

CLASSIC 31
Beechcraft V35B 285 hp

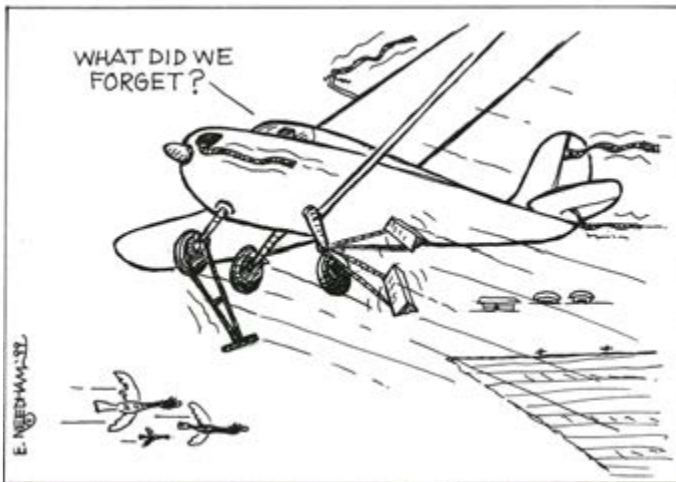
Lorrie, corporate pilot and Flight Instructor – flying her 20th Classic. Commercial, single/multi land, single sea, Instrument, Flight Instructor Airplane/multi engine – 13,000+ hours – San Fernando Valley 99s – gardening, a favorite hobby – races for fun and to get rid of excess money! (Editor's note: It works for me!)

Eleventh Classic for Joan with Commercial, Instrument, Glider and 3770 hours. Employed by Stratman Aero Service, she is still wrenching and can't stay away from the airport and the challenge of making something work. Two children (one pilot), two grandchildren – Santa Barbara 99s – Joan says "I race because I am nuts!"

CLASSIC 32
Cessna 182Q 230 hp

Soph retired from an active life in aviation, has always loved competition in racing including sports car and sailing – most of all air racing. Commercial, Instrument, Commercial glider – 3300 hours – eighth Classic – Suncoast 99s. Other interests include sailing, hiking, swimming and bowling.

A warm welcome to Marge flying her first Classic. Commercial, single/multi land, single sea, instrument, Commercial Helicopter, Glider – 5300 hours – All Ohio 99s. Pilot husband Jim serves as Chairman of the Board for Gorman-Rupp and both children are pilots and one of the five grandchildren is a pilot.



In appreciation...
John and Betty McGuire
Dick and Suzi Azar -
Aero Nautique



Lake
COUNTY OHIO
VISITORS BUREAU

Lake County Ohio Salutes Your Flying Skills

Visit Northeast Ohio Again
1-800-368-LAKE
www.lakevisit.com



KATHLEEN FIELD
Bloomsburg, PA

CAROLYN VAN NEWKIRK
York, PA



SHEILAGH WAGNER
Osprey, FL



LYNN VAN ETTEN
Terre Haute, IN

CLASSIC 33
Cessna 182P 230 hp

Sponsored by:
Capt. Jerry's
Baltimore, MD
(Advertising Specialties)
P. J. McEvoy
Baltimore, MD
(School Uniforms)

Principal of Beth Tfiloh Community School in Baltimore, Carolyn has worked in the field of education as a teacher, team leader, reading specialist, assistant principal and adjunct college instructor. She and Jack, Superintendent of Schools in York have two children, one grandchild and one on the way. Seventh Classic – Commercial, Instrument – 800 hours – Loves sharing right seat with her teachers and students, including flying lots of Young Eagles – and in spare time piano, sewing, antiques and playing on the computer.

Second Classic for Kathleen with Airline Transport, single/multi land, Flight Instructor airplane/Instrument and acquired 4500+ hours. A self-employed flight Instructor she is married to Dan, aircraft mechanic and also pilot. Raises goats, chickens, rabbits, cats and enjoys gardening, canning, and target shooting.

Both members of Central Pennsylvania 99s.

CLASSIC 34
Cessna 182S 230 hp

Sponsored by:
William Harry Wagner
Osprey, FL
(Gynecologist)

Sheilagh – Instrument – 1000+ hours – fourth Classic – Kentucky Bluegrass 99s. Married to Harry, Gynecologist and also pilot, they have five daughters (two student pilots) and proud grandparents of Avery, Elliot and Cole. "Flying for me is a labor of love – RACING IS A PASSION."

Welcome, Lynn, to your first race and to your first Classic. With Commercial, single/multi land, Instrument, Flight Instructor Airplane, she has acquired 1200 hours. A CFI in Terre Haute, "Big Red" and John, also pilot, have two children. Besides many sports, gardening, good friends, "Big Red" also enjoys flying and the Classic is a fulfillment of a dream of many years.

A big thanks to
Wayne Dugger
Tip of Texas 99s
David Holzschuh
Mike Muzyczyn
Golden Banner Press, Inc.
The Lanmons'



HEMPHILL
INSURANCE AGENCY INC.

720 Mentor Avenue
Painesville, Ohio 44077
357-1800
951-4400/Cleveland

JAY HEMPILL



MARGARET DAFLUCAS
Kansas City, MO

JENNIFER HAVENS
Kansas City, MO

CLASSIC 35
Piper PA28-181 180 hp

A big Welcome to Jennifer and Margaret flying their first Classic.

With Instrument and 315 hours, Jennifer began flying 2½ years ago and it changed her life. Leaving Agriculture Technology for Aviation Technology consulting, she works for MCI System House. Five year old son, Daniel, loves to fly with mom and will be the leader of her cheering squad. Jennifer also enjoys reading, golfing and volunteering in aviation charitable organizations.

Margaret began flying in college and graduated with a B.S. in Aviation. She worked her way up the ranks by flight instructing, flying charter and providing pilot service in corporate aircraft and currently serves as first officer on a B727 at Trans World Airline. With most of her flying done at a high altitude, she feels getting back to VFR dead reckoning will be a challenge. Airline Transport, single/multi land, Flight Instructor Airplane/Instruments/Multi engine, Advanced/Instrument Ground Instructor – 4400 hours.

Greater Kansas City 99s claims this team.



LINDA SCHUMM
Mackinaw, IL

ROSEMARY EMHOFF
Peoria Height, IL

CLASSIC 36
Cessna 182S 230 hp

Sponsored by:
Magnus Aviation
Sheboygan Falls, WI
(Cessna Aircraft Sales)

Working for Cessna Aircraft-Single Engine Division for two years, Linda declares it to be the best job in the world! She works with flight schools to help them attract new students, to help with business and market planning and to encourage them to become a Cessna Pilot Center. Airline Transport, single/multi land, Flight Instructor Airline/ Instruments/multi engine, 535 jumps, advanced/ Instrument Ground Instructor – 2850 hours – sixth Classic. Although aviation is her job, it's still her No. 1 hobby. Loves traveling, both domestic and international – knitting – needle crafts – skydiving – it does produce a well-rounded personality.

Mobile and Wireless Development Manager, Rosemary has been with IBM for 15 years. Single/multi land, Instrument – 660 hours – fifth Classic. Rosemary is a dive master with over 350 dives. As she puts it – Linda dives out of planes – Rosemary off boats. A happy home owner and enjoys the landscaping to make it look great for summer.

Both members of Central Illinois 99s.
Passenger: Shannon Jipson

Our appreciation:

Montwood Bank

Bob Kern - Aviation Services

Phil Barrett - West Texas Airport

Sierra Hospital

Air Transport, Inc.

El Paso Convention Bureau

El Paso International Airport

Joe Alverado - Advanced Avionics

Thank you to:

Private Pilot Magazine

Aviation Safety Magazine

Air Transport

Individual El Paso Chapter Members



PAMELA SPRANG
Wadsworth, OH

DONNA MOORE
Massillon, OH



TERRI HULL
Fort Recovery, OH



ROXANNE CERONE
Milford Center, OH

CLASSIC 37
Cessna 182N 230 hp

Sponsored by:
Luke Engineering
Wadsworth, OH
(Metal finishing)
Beaver Avionics
Beaver Falls, PA
(Avionics)
Weltzien Skypark
Wadsworth, OH
(Public Used/Private Owned Airport,
FBO, Flight School)
Dr. Robert Hamilton, III
Canton, OH
(Physician/AME)
Kustom Industrial Fabricators, Inc.
Akron, OH
(Industrial)

Pam and Donna – a big welcome to your first Classic. Pam with Commercial, Instrument, Flight Instructor/Airplane. Advanced Ground Instructor has acquired 1740 hours. She is a full-time physical therapist with P. T. Services, Inc. and a full-time flight instructor training copilots at Weltzien Skypark. Husband Phillip serves as First Officer with Continental Express. Her hobbies include running, swimming, biking and scuba diving.

Donna, a Registered Nurse, is employed as a Quality Specialist at Parma Community General Hospital. Husband Allen is Controller at Akron General Medical Center. Commercial and Instrument with 570 hours. Donna has wanted to compete in the ARC since she attended her first 99 meeting and listened to another team prepare for the race. With the race finishing in her backyard – the time is right! Hobbies include taekwondo (third degree black belt), scuba diving and running.

Women with Wings 99s sends this team.

Many thanks to
Regional Aviation Association
Lake County Ohio Visitors Bureau

CLASSIC 38
Piper PA28-140 150 hp

Sponsored by:
The Morgan House Restaurant
Dublin, OH (Restaurant)
Corporate Roof Management System
David Denman
Dublin, OH (Roof Consulting)
John Berend
Plain City, OH
Roby Chevrolet Oldsmobile, Inc.
Marysville, OH (Automobile dealership)
Harrington Lawnmower Sales
Dimondale, MI (Lawnmower sales)
CMH Aviation - Marysville Flying Service
Marysville, OH (Airport FBO/Charter)
Marysville Photo
Marysville, OH (Photography)
Hull Bros. Inc. Case IH
Fort Recovery, OH
Ponderosa Steak House – Portland, IN
L.B. Aero – Celina, OH
Brian Rosenbeck – Celina, OH
Hittle Pontiac-Cadillac
Coldwater Implement Co.
Coldwater, OH (Farm Machinery)

A self-employed free lance Flight Instructor, Terri enjoys passing on the excitement of flying to others. Husband Bob is Parts Manager for Hull Bros. Inc., a family owned business and they have two children. Third Classic – 99 member at large – 2600 hours – Commercial, single/multi land, Flight Instructor Airplane/Instruments/Multi engine, Advanced/Instrument Ground Instructor.

A big welcome to Roxanne flying her first Classic. At present time she is Flight Instructor at Marysville Flying Service/CMH Aviation with the ambition to some day fly for airlines. Husband John is an engineer with Honda R&D. Commercial, single/multi land, Flight Instructor Airplane/Instruments, three jumps, Advanced/Instrument Ground Instructor – 650 hours – hobbies include cooking, gardening, playing piano – and playing with black lab, "Thunder".



DEBBIE DOWNEY
Chesterland, OH



BERNICE BARRIS
Cleveland, OH



DIANA WARD
Redding, CA

BARBARA CROOKER
Palo Cedro, CA

CLASSIC 39
Piper PA28R-200 200 hp

Sponsored by:
Downey & Associates, Inc.
Chesterland, OH
(Construction Management/General Contracting)

Debbie with Commercial, Flight Instructor airplane/ Instruments, Advanced/Instrument Ground Instructor has acquired 700 hours. A nurse practitioner at Cleveland VA Medical Center, she also is a part-time Flight Instructor at American Flyers. Husband Edward, Architectural Engineer, and Debbie have two children (one pilot). Her second Classic, she races for the challenge and fun and in spare time enjoys gardening.

A big Welcome to Bernice flying her first Classic. Commercial, single/multi land, single/multi sea, Instrument - 1500+ hours - three children (two pilots) - five grandchildren - interests in Silver Wings, Civil Air Patrol, Squadron Commander.

This team members of the Lake Erie 99s.

CLASSIC 40
Cessna 182L 230 hp

Barbara, a full time realtor for Coldwell Banker First Shasta Realty, specializes in residential homes. She learned to fly after four children were on their own and flies mostly for pleasure and fun. Robert, a cabinetmaker, and Barbara not only boast of four children but also grandparents of three. With Instrument, flying second Classic, raises beef cows and goats on mini-ranch.

Diana with Instrument and 510 hours flying her second Classic. She and James, retired, have two children and two grandchildren. Diana, just remember the tremendous head wind walking to FBO is wonderful tail wind returning to plane.

Both members of Mt. Shasta 99s.

Passenger: Anita Libbee



IN APPRECIATION TO
HEMPHILL INSURANCE AGENCY
WOMEN WITH WINGS



EXPERIMENTAL AIRCRAFT ASSOCIATION
Northeast Ohio Chapter 118
Concord, OH

Blue Skies and Best of Luck
to the participants in the
Air Race Classic '99

Thanks to
All Ohio 99s
Hugh J. Barrett, CLU
Painesville Flying Service, Inc.

Good Luck
Pam and Donna!
Blue Skies,
Women With Wings



PAULINE GLASSON
Corpus Christi, TX



BARBARA LEWIS
Corpus Christi, TX



ERNESTEEN HUNT
Oak Ridge, TN

GARY WHEELER
Greenville, SC

CLASSIC 41
Cessna 172N 160 hp

All Classics for Pauline – Commercial, single/multi land, single sea, Glider, Flight Instructor Airplane/ Instruments/Multiengine, Advanced/Instrument Ground Instructor – 40,000 + hours – Tip of Texas 99s. Happy days are here again and sends the dog's tails a-wagging and the student's hands a-waving as they celebrate their annual reprieve – course they are just as happy when Pauline returns.

Barbara and husband Joe, a Pathologist are great golfing companions – have four children and eight grandchildren. Barbara, you have flown twelve Classics and I assure you Salt Lake City is not a Stop this year.



**HIGHEST *QUALITY* PRINTING
IN SOUTH TEXAS!**

Let us put our **Qualified Sales, Service and Craftsmanship** to work on all your printing needs!

- Stationery
- Newsletters
- Brochures
- Full Color Printing
- Competitive Pricing
- Desktop Publishing
- Color Separations
- Graphic Design
- Electronic Photo Retouching
- Digital Imaging



1248 South Padre Island Drive
Corpus Christi, Texas 78416
(361) 854-1933
FAX (361) 854-2064
E-Mail: GBpress@swbell.net

CLASSIC 42
Piper PA28-181 180 hp

Gary flying her 16th Classic – Commercial, single/multi land, single sea, Instrument, Flight Instructor/Airplane, Commercial Glider – 3000+ hours – Foothills 99s. She has computers at work telling her where to go, what to do, and when to do it – and supervisors who tell her how to do it. With so many ways her life gets re-arranged, she finds it nice to climb into her plane and fly into the wild blue yonder. Twenty three years as a Registered Nurse she works for Greenville Memorial Hospital. Also enjoys scuba diving.

Ernesteen with 680 hours and flying her third Classic. A retired bank teller, she and husband Lee (pilot, A&P Mechanic), also retired, have two daughters, seven grandchildren and one great grandson. An active member in the Tennessee 99s, she has served two terms as Chapter Chairman. Ernesteen and Lee fly a Cessna 150 mostly to fly-ins and fly-in breakfasts and she also enjoys hangar flying, swimming, water skiing and sewing.



"I didn't do it, I didn't do it! What is it I didn't do?"

Thanks to:
Chuck and Gretchen Reed
Hutter Racing Engines Ltd.



MICHELE PULLEY
Mississauga, Ontario Canada

ANNE STARRET
Norval, Ontario Canada

CLASSIC 43
Cessna 182P 230 hp

Warm greetings to this Canadian team flying their first Classic.

Michele – Airline Transport, single/multi land, single sea, Flight Instructor Airplane/Instruments/Multi engine, Advanced/Instrument Ground Instructor – 2400 hours. A Flight Instructor with Brampton Flying Club, she is married to Chris, also a pilot.

Anne obtained chartered accountant in 1976. She has flown to PEI and has a mountain check out in Calgary. With 230 hours includes flying in British Columbia and Ontario. Husband Ron, accountant, and Anne have two children of which one is a pilot.

These co-captains are members of the First Canadian 99s.

Passenger: Rachelle Starret



SUSAN KIME
London, Canada

MARILYN DICKSON
Toronto, Canada

CLASSIC 44
Piper PA28-140 150 hp

A big welcome to Marilyn and Susan flying their first Classic.

Marilyn was a teacher and then worked for many years for a teachers' union. Last year she left that position to do what she really enjoys – flying. She holds Commercial, single/multi land, Flight Instructor/Airplane and acquired 625 hours. She works with Aviation International coordinating Summer Flying Camp for 14-17 year olds. Husband Carl is a technician. A member of First Canadian 99s, Marilyn's interests include writing and is currently working on a biography of marathon swimmer, Vicki Keith.

A flight instructor for Empire Aviation, Susan learned to fly at age of four. Prior to becoming an instructor she was media director for an advertising agency and had her own business for eight years. Commercial, flight Instructor/Airplane, advanced Ground Instructor – 1805 hours – Maple Leaf 99s.

Our appreciation:
Experimental Aircraft Association
Lake Erie 99s

WANTED
WOMEN PILOTS AND
STUDENT PILOTS TO
JOIN THE 99s'
LAKE ERIE CHAPTER
CALL 440-257-9269



JUNE EVANS
Omaha, NE

SCOOTER SATHRE
Omaha, NE

CLASSIC 45
Cessna 182Q 230 hp

"Babs" currently a pharmacist and works part-time as a flight instructor. Commercial, single/multi land, Flight Instructor airplane/Instruments/multi engine/Basic Ground Instructor – 580 hours – second Classic. Hobbies include scuba diving, golf, in-line skating and reading.

"Scooter", a student, works for Mutual First Federal Credit Union. She started her flying career at age fifteen – serves as secretary to Alpha Eta Rho – enjoys swimming and running.

Both members of the Omaha 99s.
Passenger: Crystal Wallace



Bounce a little -
air and ground!



GWEN BLOOMINGDALE
Provincetown, MA

BARBARA GARD
Provincetown, MA

CLASSIC 46
Cessna 177RG 200 hp

Sponsored by:
Willie Air Tours, Inc.
Provincetown, MA
(Aerial sightseeing)

Fourth Classic for this team from Eastern New England 99s.

Barbara retired after seven years in Marine Corps and sixteen years Army National Guard. With A&P license, she commutes to Nantucket to repair aircraft – also owns, operates, and maintains a 1930 Stinson SM8A Detroit – owner/president of Willie Air Tours, Inc. – Commercial, single/multi land, Instrument, 200 jumps – 2103 hours. She also repairs equipment for the Center for Coastal Studies and has worked several exciting endangered whale rescues.

Gwen, retired attorney, is serving third term as Vice Chairman on Airport Commission – also Provincetown's representative to the Cape Cod Commission, a regional land use and planning authority. One child – two beautiful grandchildren – co-owner of Willie Air Tours.



Lost Nation
**Regional
Aviation
Association**

Willoughby, Ohio
"The Courtesy City"

Supporting Lost Nation Airport
and the
Air Race Classic '99

AWARDS

FIRST PLACE

Air Race Classic award for Pilot and Co-Pilot and \$5,000.00 in cash.

SECOND PLACE

Air Race Classic award for Pilot and Co-Pilot and \$3,000.00 in cash.

THIRD PLACE

Air Race Classic award for Pilot and Co-Pilot and \$2,000.00 in cash.

FOURTH PLACE

Air Race Classic award for Pilot and Co-Pilot and \$1,500.00 in cash.

FIFTH PLACE

Air Race Classic award for Pilot and Co-Pilot and \$950.00 in cash.

SIXTH PLACE

Air Race Classic award for Pilot and Co-Pilot and \$700.00 in cash.

SEVENTH PLACE

Air Race Classic award for Pilot and Co-Pilot and \$600.00 in cash.

EIGHTH PLACE

Air Race Classic award for Pilot and Co-Pilot and \$500.00 in cash.

NINTH PLACE

Air Race Classic award for Pilot and Co-Pilot and \$400.00 in cash.

TENTH PLACE

Air Race Classic award for Pilot and Co-Pilot and \$350.00 in cash.

MARY PEARSON AWARD: Highest Scoring Team Flying the Air Race Classic the First Time. Donated by: friends.

HIGHEST SCORE FOR FIRST TIME TEAM (not ever having used any weather service or consultant): WEATHER SERVICE FOR 2000 AIR RACE CLASSIC (non-transferable) by Richard Patton, 3159 Beech Drive, East Point, GA 30344.

..... **SOS CLAUDE GLASSON AWARD:** to the team that places last – \$100.00 – Donated by Tip of Texas 99s.

LEG PRIZES

(Top Ten Winners Not Eligible)

Leg #	From	To	Place	Award
1	El Paso Int'l Airport	San Angelo	1	\$75.00 (Two Medallions)
			2	50.00 (Two Medallions)
			3	25.00 (Two Medallions)
			4	(Two Medallions)
2	San Angelo	Ada	1	\$75.00 (Two Medallions)
			2	50.00 (Two Medallions)
			3	25.00 (Two Medallions)
			4	(Two Medallions)
3	Ada	Kaiser Lake	1	\$75.00 (Two Medallions)
			2	50.00 (Two Medallions)
			3	25.00 (Two Medallions)
			4	(Two Medallions)
4	Kaiser Lake	Freeport	1	\$75.00 (Two Medallions)
			2	50.00 (Two Medallions)
			3	25.00 (Two Medallions)
			4	(Two Medallions)
5	Freeport	Seymour	1	\$75.00 (Two Medallions)
			2	50.00 (Two Medallions)
			3	25.00 (Two Medallions)
			4	(Two Medallions)
6	Seymour	Flint	1	\$75.00 (Two Medallions)
			2	50.00 (Two Medallions)
			3	25.00 (Two Medallions)
			4	(Two Medallions)
7	Flint	Toronto	1	\$75.00 (Two Medallions)
			2	50.00 (Two Medallions)
			3	25.00 (Two Medallions)
			4	(Two Medallions)
8	Toronto via Perry-Warsaw	Willoughby	1	\$75.00 (Two Medallions)
			2	50.00 (Two Medallions)
			3	25.00 (Two Medallions)
			4	(Two Medallions)

DONATED TO ALL CONTESTANTS:

Trip Kit for Race

Jeppesen
Rhonda Larance
55 Inverness Drive East
Englewood, CO 80112-5498

Race Route Charms

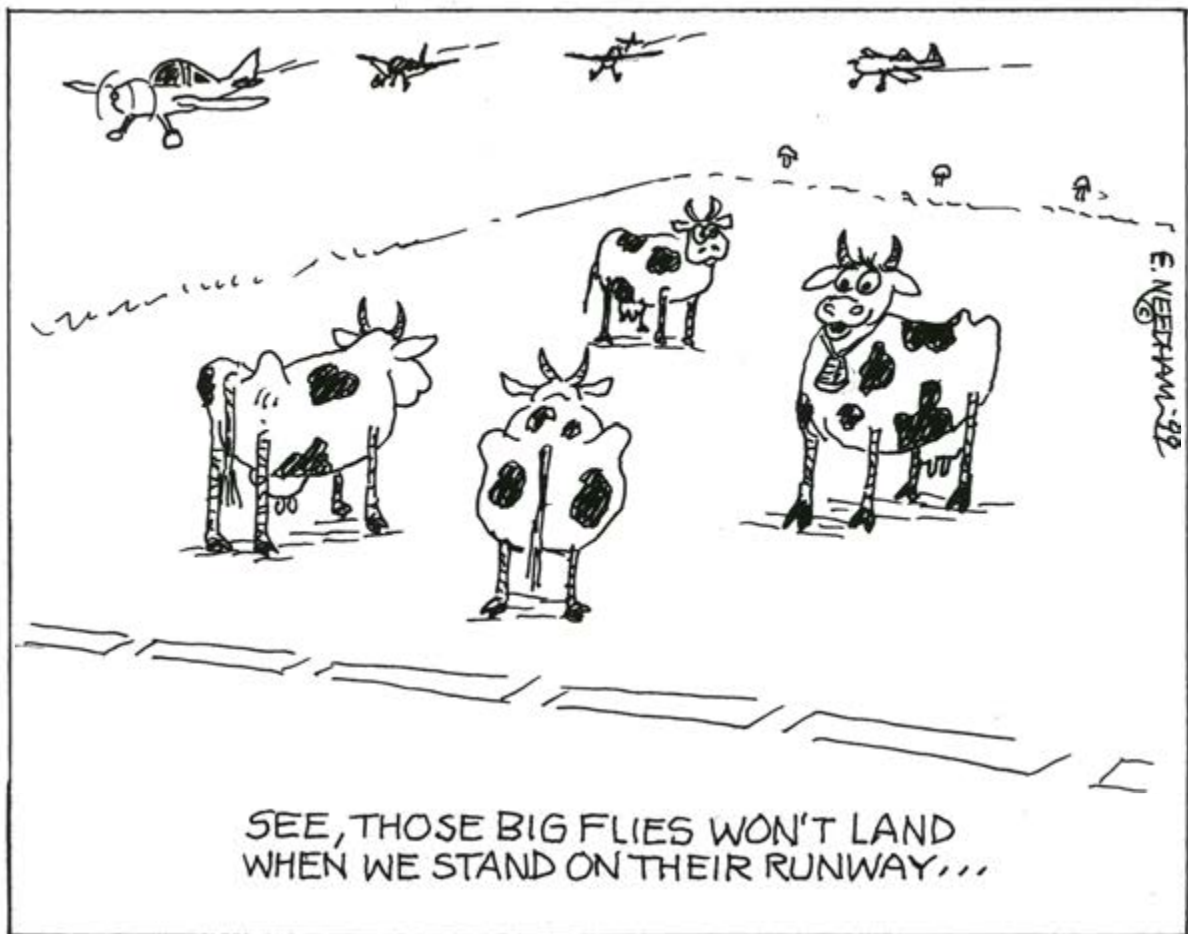
Air Race Classic

Chart Case

El Paso 99s

Awards

Air Race Classic



AIR RACE CLASSIC WINNERS

1977

Marion Jayne, Nancy Jayne — Joyce Wells — Luana Davis — Norma Futterman, Virginia Showers — Esther Wright, Judy Hall — Pat Jetton, Elinor Johnson — Ali Sharp — Jean Rose, Janice Free — Pat Gatlin, Pat Friedman — Velda Mapelli, Stephanie Mapelli.

1978

Sophia Payton, Helen Davison — Dot Etheridge, Dot Wilson — Pat Jetton, Elinor Johnson — Helen McGee, Norma Draper — Sammy McKay, Winnie DuPerow — Marion Jayne, Patricia Keefer — Helen Wilke, Kathy Long — Barbara Goetz, Thelma Cull — Joyce Wells, Alma Hinds — Susan Adler, Mary Santosuosso.

1979

Marion Jayne, Nancy Jayne — Margaret Ringenberg, Pat Wilson — Claire Walters, Eleanor Ruby Moore — Virginia Wegener, Lynn Carey — Tanya Cunningham, Caroline Ann Morey — Joan Paynter, Shirley Tanner — Dot Etheridge, Dot Wilson — Joyce Wells, Alma Hinds — Sophia Payton, Helen Davison — Jan Gammell, Ilovene Potter.

1980

Pat Jetton, Elinor Johnson — Sammy McKay, Marian Banks — Dot Etheridge — Marion Jayne, Patricia Keefer — Dottie Anderson, Marilynn Miller — Ali Sharp, Berni Stevenson — Alma Hinds, Joyce Wells — Suzanne Jablonski, Barbara Persons — Carolyn Pilaar, Gary Wheeler — Sophia Payton, Sherry Harper.

1981

Juanita Blumberg, Bonnie Quenzler — Edna Gardner Whyte, Patricia Hyde — Sammy McKay, Pauline Mallary — Marion Jayne, Nancy Palozola — Dottie Anderson, Marilynn Miller — Pat Jetton, Elinor Johnson — Esther Lowry, Betty Klein — Margaret Ringenberg, Janet Williamson — Sophia Payton, Helen Davison — Barbara Goetz, Thelma Cull.

1982

Maybelle Fletcher, Mary Byers — Martie Pearce — Pauline Glasson, Sue Gray — Margaret Ringenberg, Wilma Ashe — Bonnie Quenzler, Shirley Zillig — Marion P. Jayne, Nancy Palozola — Caroline Pilaar, Caroline Grubbs — Pat Jetton, Elinor Johnson — Susan Maule, Gary Wheeler — Dot Etheridge.

1983

Gini Richardson, Marian Banks — Sharon Crawford, Marie Hoefler — Pauline Glasson, Donna Golden — "Tookie" Hensley, Janice Hoffman — June Beers, Nancy Walters — Lynne Kay Ullicki, Jayne Ann Overgard — Fran Bera, Betty Faux — Jean "Sunny" Schiffman, Suzy Henney — Marion Jayne, Jean Speckman — Anna Kate Hipp, Merry Robertson.

1984

Phyllis Baer, Dodie Gann — Jayne Overgard, Lynne Ullicki — Pauline Mallary — Jean Sloan, Dottie Anderson — Marian Banks, Gini Richardson — Pat Fairbanks, "Soph" Payton — Marion P. Jayne — Diane Shaw Schulke, Genie Rae O'Kelley — Stephanie D. Mapelli, Velda King Mapelli — Marie Hoefler, Sharon Crawford.

1985

Gini Richardson — Caroline Grubbs, Bonnie Gann — June Beers, Sammy McKay — Mary Jo Volk, Rita Buhl — Kathy Walton, Joyce Wells — Sharon Crawford, Genie Merrell — Dot Arnett, Margaret Ringenberg — Jenny Wright, Joan Steinberger — Carolyn Pilaar, Gary Wheeler — Janice Hoffman, "Tookie" Hensley.

1986

Marion Jayne — Janet Yoder, Margaret Ringenberg — Maybelle Fletcher, Kitty Havens — Esther Lowry, Shirley Winn — Marge Thayer, Ruby Sheldon — Gary Wheeler, Carolyn Pilaar — Gini Richardson — Margaret Callaway, Susan Kennedy — Carole Rose, Lorrie Blech — Rita Buhl, Mary Jo Volk.

1987

Marion Jayne — Margaret Ringenberg, Janet Yoder — Caroline Salmans, Bonnie Gann — June McCormick — Janice Brown, Bunny Haberfelde — Sharon Crawford, Marie Hoefler — Esther Lowry, Sue Gray — Lois Van Zelf, Pam vanderLinden — Joy La Caille, Nancy Toon — Elaine Roehrig and Marolyn Wilson.

1988

Margaret Ringenberg — Bonnie Gann, Shirley Zillig — Bunny Haberfelde, Janice Brown — Susan Collier, Nancy Toon — Pauline Mallary — Susan Tarabetz, Jean Schiffmann — Gini Richardson — Gary Wheeler, Carolyn Pilaar — Dana Wooten, Genie Rae O'Kelley — Mary Creason, Barbara Goodwin.

1989

Marge Thayer, Ruby Sheldon — Margaret Ringenberg, Naomi Ruth Witmer — Betty Young, Mary Creason — Marion P. Jayne, Patricia Keefer — Gini S. Richardson, Margaret Callaway — Sunny Schiffmann, Susan L. Tarabetz — Susan Chapple, Chris Emmons — Jean Sloan, Dottie Anderson — Jenny Wright, Joan Steinberger — Joyce Wells, Kathy Walton.

1990

Esther Grupenhagen, Mardell Haskins — Nancy Fitzpatrick, Margaret Ringenberg — Marge Thayer, Ruby Sheldon — Barbara Goodwin, Mary Creason — Mary Jo Volk, Rita Buhl — Joyce Hlischie, Eddie Whistle — Jenny Wright, Joan Steinberger — Jean Sloan, Dottie Anderson — Rose Lepore, Cathy Wappler — Norma Futterman, Margaret Mead.

1991

Esther Grupenhagen, Mardell Haskins — Tookie Hensley, Corrine Keza — Marge Thayer, Ruby Sheldon — Susan Chapple, Chris Emmons — Margaret Ringenberg, Lois Feigenbaum — Marion P. Jayne, Patricia Keefer — Rose LePore, Cathy Wappler — Jenny Wright, Joan Steinberger — Fran Bera, June McCormack — Martie Pearce, Shirley Rogers.

1992

Susan Collier, Nancy Toon — Esther Grupenhagen, Mardell Haskins — Linda Schumm, Rosemary Emhoff — Marge Thayer, Ruby Sheldon — Jenny Wright, Joan Steinberger — Evelyn Cox, Diane Winn — Cathy Wappler, Rose Lepore — Lois Feigenbaum, Margaret Ringenberg — Bev Allen, June McCormack — Martie Pearce, Shirley Rogers.

1993

Rose Lepore, Cathy Wappler — Lois Feigenbaum, Margaret Ringenberg — Marge Thayer, Ruby Sheldon — Susan Collier, Nancy Toon — Merle Starer, Kimberly Starer — Mardell Haskins, Esther Grupenhagen — Christina Bentley, Gretchen Jahn — Tookie Hensley, Corrine Keza — Sandra Fisher, Deloris Guthrie — Genie Rae O'Kelley, Diane Shaw.

1994

Susan Collier, Nancy Toon — Chris Bentley, Gretchen Jahn — Cathy Wappler, Rose Lepore — Margaret Ringenberg, Lois Feigenbaum — Pat Atkinson, Angela Hubbard — Linda Schumm, Rosemary Emhoff — Dené Chabot-Fence, Gloria May — Loretta Jones, Linda House — Krystal Lewis, Heather Penney — Mardell Haskins, Esther Grupenhagen.

1995

Marge Thayer, Ruby Sheldon — Gretchen Jahn, Chris Bentley — Shirley Rogers, Martie Pearce — Susan Collier, Nancy Toon — Dené Chabot-Fence, Gloria May — Margaret Ringenberg, Lois Feigenbaum — Dottie Anderson, Jean Sloan — Ilse De Vries, Lorrie Blech — Krystal Lewis, Lauren Nicholson — Jenny Wright, Joan Steinberger.

TWENTIETH AIR RACE CLASSIC WINNERS — 1996



JACKIE BATTIPAGLIA
New Windsor, NY

LAUREN NICHOLSON
Kailua, HI



DENÉ CHABOT-FENCE
Carson City, NV

GLORIA MAY
Kerman, CA



MARGE THAYER
Mesa, AZ

RUBY SHELDON
Phoenix, AZ



TOOKIE HENSLEY
Mohave Valley, AZ

JUNE McCORMACK
Borego Springs, CA



PAULINE MALLARY
Fairburn, GA



PHYLLIS WELLS
Peyton, CO



ROYCE CLIFFORD
Leucadia, CA



JACKIE SIEGEL
Livingston, NJ



JOYCE HILCHIE
Prescott, AZ

BARBARA VICKERS
Sedona, AZ



SUSAN COLLIER
Bloomington, IN

NANCY TOON
Atlanta, GA



JANET YODER
Wichita, KS

BONNIE JOHNSON
Valley Center, KS



DOTTIE ANDERSON
Bluffton, OH

JEAN SLOAN
Lima, OH

TWENTY FIRST AIR RACE CLASSIC WINNERS — 1997



SOPHIA PAYTON
Clearwater, Fl



SHEILAGH WAGNER
Osprey, FL



GLORIA MAY
Kerman, CA

DENÉ CHABOT-FENCE
Carson City, NV



SUSAÑ COLLER
Bloomington, IN

NANCY TOON
Atlanta, GA



SUSAN LARSON
El Paso, TX

SUZANNE AZAR
El Paso, TX



RUBY SHELDON
Phoenix, AZ

MARGE THAYER
Mesa, AZ



RUTH MAESTRE
Brookville, OH

DENISE WATERS
Marble Hill, NY



ROYCE CLIFFORD
Leucadia, CA



JACKIE SIEGEL
Tampa, FL



DOTTIE ANDERSON
Bluffton, OH

JEAN SLOAN
Lima, OH



LYNN O'DONNELL
Denville, NJ

LAURA L. KNIPMEYER
Long Valley, NJ



GARY WHEELER
Greenville, SC

MICHELE MURPHY
Chesapeake, VA

TWENTY SECOND AIR RACE CLASSIC WINNERS — 1998



SOPHIA PAYTON
Clearwater, FL



MELISSA TUMMINO
Kent, OH



ROYCE CLIFFORD
Leucadia, CA



JACKIE SIEGEL
New York, NY



PAULINE MALLERY
Fairburn, GA



PHYLLIS WELLS
Peyton, CO



GLORIA MAY
Kerman, CA

DENÉ CHABOT-FENCE
Carson City, NV



GARY WHEELER
Greenville, SC



ERNESTEEN HUNT
Oak Ridge, TN



NANCY TOON
Atlanta, GA

SUSAN COLLER
Bloomington, IN



GRETCHEN JAHN
Eastlake, CO

CHRIS BENTLY
Littleton, CO



JOYCE WELLS
Larkspur, CA

KATHY WALTON
Clearlake, CA



DOTTIE ANDERSON
Bluffton, OH

JEAN SLOAN
Lima, OH



RUBY SHELDON
Phoenix, AZ

MARGE THAYER
Mesa, AZ

Twenty-Three Years of Flying!

Where We Have Been...and When!

Alabama

Huntsville - 1991
Muscle Shoals - 1993

Arizona

Bullhead City - 1991
Casa Grande - 1983
Holbrook - 1992
Kingman - 1987
Page - 1985
Prescott - 1996
Winslow - 1990

Arkansas

Conway - 1996
Fayetteville - 1990
Fort Smith - 1980
Hot Springs - 1978
Jonesboro - 1987
Mena - 1992
Mountain Home - 1991
Texarkana - 1985

California

Água Dulce (fly-by) - 1987
Alturas - 1989
Calexico (fly-by) - 1983
El Cajon - 1983
Rancho Murrieta (fly-by) - 1987
Redding - 1985
Rio Bravo - 1987
Sacramento - 1989
Salinas - 1988
Santa Monica - 1979
Santa Rosa - 1977 - 1986
Stockton - 1979
Temecula Valley - 1990
Thermal - 1992

Colorado

Durango - 1996
Grand Junction - 1978

Canada

Toronto - 1999

Florida

Daytona Beach - 1985 - 1996
Destin/Fort Walton Beach - 1978

Georgia

Albany - 1985
Athens - 1996
Gainesville - 1984
Jekyll Island - 1981
Rome - 1998

Idaho

Boise - 1977 - 1986 - 1997
Coeur d'Alene - 1982 - 1995
Idaho Falls - 1988
Twin Falls - 1984

Illinois

Cahokia - 1994
Danville - 1995
Decatur - 1993
Freeport - 1999
Galesburg - 1981
Kankakee - 1988
Marion - 1980
Mount Vernon - 1990

Indiana

Bloomington - 1992
Columbus - 1987
Elkhart - 1997
Evansville - 1977 - 1986
Lafayette - 1989
Seymour - 1994 - 1999

Iowa

Burlington - 1991
Cedar Rapids - 1977 - 1986
Dubuque - 1994
Fort Dodge - 1995
Marshalltown - 1989

Iowa (continued)

Mason City - 1988
Waterloo - 1980

Kansas

Belleville - 1990
Dodge City - 1984
Garden City - 1981
Hays - 1992
Hutchinson - 1983
Independence - 1994
Olathe - 1978
Pittsburg - 1993
Salina - 1980
Winfield - 1987

Kentucky

Lexington - 1981
Louisville - 1983
Owensboro - 1996
Paducah - 1984

Michigan

Flint - 1999
Grand Rapids - 1983
Sault Ste. Marie - 1997

Minnesota

Detroit Lakes - 1991
Duluth - 1997
Fergus Falls - 1994
Minneapolis - 1979

Mississippi

Greenville - 1994
Gulfport - 1978
Meridian - 1985

Missouri

Cape Girardeau - 1998
Columbia - 1983
Jefferson City - 1982
Joplin - 1984
Kaiser Lake - 1999
Kirksville - 1992
St. Joseph - 1998

Montana

Cut Bank - 1982
Great Falls - 1979
Havre - 1995
Miles City - 1982

Nebraska

Ainsworth - 1989
Grand Island - 1977 - 1986
Kearney - 1988
Lincoln - 1982
Norfolk - 1994
North Platte - 1978
Ogallala - 1998
Scottsbluff - 1984
Sidney - 1981

Nevada

Elko - 1985
Jackpot - 1989
Las Vegas - 1978
Laughlin - 1991
Reno - 1995
Winnemucca - 1988

New Mexico

Farmington - 1987
Las Vegas - 1990
Roswell - 1996
Santa Fe - 1985 - 1998
Tucumcari - 1992

New York

Binghamton - 1993
Perry-Warsaw (Fly-By) - 1999

North Carolina

Asheville - 1993
Greensboro - 1981

North Dakota

Bismarck - 1979
Jamestown - 1997

Ohio

Batavia - 1998
Columbus - 1994
Toledo - 1977 - 1986
Willoughby - 1999
Youngstown - 1989

Oklahoma

Ada - 1999
Burns Flat - 1978 - 1999
Elk City - 1990 - 1992
Shangri-La, Afton - 1981
Woodward - 1998

Oregon

Burns - 1995
Klamath Falls - 1979
Medford - 1977 - 1986
Sunriver - 1982

Pennsylvania

Philadelphia - 1989
York - 1990

Rhode Island

North Kingstown - 1993

South Carolina

Columbia - 1980
Greenville - 1987

South Dakota

Aberdeen - 1995
Philip - 1991
Pierre - 1982
Sioux Falls - 1981

Tennessee

Dyersburg - 1992
Jackson - 1982
Knoxville - 1982 - 1997

Texas

Abilene - 1980
Childress - 1985
Corpus Christi - 1980 - 1993
Dalhart - 1987
El Paso - 1983 - 1999
Lubbock - 1983
Midland - 1998
San Angelo - 1999
Tyler - 1993
Wichita Falls - 1996

Utah

Ogden - 1977 - 1986
Provo - 1991
Vernal (fly-by) - 1991

Washington

Pasco - 1984
Walla Walla - 1979

West Virginia

Huntington - 1980 - 1988 - 1990 - 1995
Morgantown - 1993
Wheeling - 1997

Wisconsin

Ashland - 1994
Milwaukee - 1979
Minocqua-Woodruff - 1991

Wyoming

Casper - 1978
Cheyenne - 1977 - 1986
Evanston - 1997
Gillette - 1995
Laramie - 1988
Newcastle - 1997
Rawlins - 1989
Rock Springs - 1984
Sheridan - 1979
Worland - 1991

1999 (UPDATED) RACE ROUTE



June 22-25, 1999
STATUTE MILES 2413.91
NAUTICAL MILES 2097.63

1999 RACE ROUTE



June 22-25, 1999
 STATUTE MILES 2421.97
 NAUTICAL MILES 2104.63

1977 RACE ROUTE



1978 RACE ROUTE



1979 RACE ROUTE



1980 RACE ROUTE



1981 RACE ROUTE



1982 RACE ROUTE



1983 RACE ROUTE



1984 RACE ROUTE



1985 RACE ROUTE



1986 RACE ROUTE



1989 RACE ROUTE



1990 RACE ROUTE



1993 RACE ROUTE



1994 RACE ROUTE



1997 RACE ROUTE



1998 RACE ROUTE



1987 RACE ROUTE



1988 RACE ROUTE



1991 RACE ROUTE



1992 RACE ROUTE



1995 RACE ROUTE



1996 RACE ROUTE





The National Exchange Club is proud to sponsor the 1999 Air Race Classic, commemorating the 70th anniversary of the 1929 Women's Air Derby, in which Exchange also played an important part. Since 1911, Exchange has been working to make America a better place. For more information, call 800-XCHANGE.

The Zonta Club of Cleveland
and
Sandy Bellay, Zonta Area 3 Director
*Salute the Pilots of
Air Race Classic Ltd.*
June 22-25, 1999



in Memory of Zontian Amelia Earhart



a worldwide service organization of executives in business and the professions working together to advance the status of women