



**Bakersfield/Rio Bravo, California
to
Greenville, South Carolina
June 29 - July 2, 1987**



Official Program \$3.50

RIO BRAVO COUNTRY

Two hours from Los Angeles by car or forty-five minutes by air.

From the moment you check in at the Lodge, you'll know why it has become Central California's finest Resort.

Featuring 110 oversized Rooms, Deluxe Suites with Woodburning Fireplaces and Wetbars, Banquet and Conference Rooms, 19 Championship Tennis Courts (15 lighted), Golf, Swimming Pool, Jacuzzi, Horseback Riding, White Water Rafting and Kayaking on the nearby Kern River.

View the hills at twilight from the attractive dining room or cocktail lounge, truly a magnificent experience.

The Championship 18-hole Golf Course is open to Lodge guests.

All of this located on the Rio Bravo Ranch...10,000 acres of rolling hills at the base of the Sierra Nevada Mountains.



For Reservations Call:
800-282-5000
805-872-5000
11200 Lake Ming Road
Bakersfield, CA 93306



Jane, Dell, Janice & Bunny

from the Rio Bravo Resort
& KHG Aviation



For reservations
800/282-5000 805/872-5000



F.B.O. KHG Aviation Inc.
805/872-4666

A great place for a "Fly In!"

- 3000 ft. runway
- Fuel • Maintenance • Instruction
- Charters • Tiedowns • Courtesy Car



*A Warm
Welcome to*

*1987
AIR RACE CLASSIC
CONTESTANTS*

AIR RACE CLASSIC LTD.

2305½ Hermosa Dr.
Durango, Colorado 81301

EDITOR PAULINE GLASSON
ASSISTANT EDITORS SUE GRAY AND BETTY (GRAY) BERRY
PUBLISHER GOLDEN BANNER PRESS, INC.
COVER PHOTO CLAUDE GLASSON

INDEX

CONTESTANTS (ALPHABETICAL LISTING)	3
AIR RACE CLASSIC DIRECTORS	5
RACE START	6-7
ENROUTE STOPS	8-13
RACE TERMINUS	14-15
HANDICAPS	16-17
DESIGNATED AIRPORTS ON THE ROUTE	17
EVENTS	17
CONTESTANTS	18-36
AWARDS	41
LEG PRIZES	42-43
1977 THRU 1984 AIR RACE CLASSIC WINNERS	45
1985 AIR RACE CLASSIC WINNERS	46
1986 AIR RACE CLASSIC WINNERS	47

CONTESTANTS

Classic No.	Name	Page	Classic No.	Name	Page
36	Anderson, Dottie	35	28	McKay, Sammy	31
28	Beers, June	31	31	Minter, Doris	33
38	Blech, Lorrie	36	19	Mitchell, Bev	27
7	Brown, Georgia	21	34	Moreland, Pat	34
11	Brown, Janice	23	18	Morrison, Janet	26
7	Buchanan, Patti	21	23	Pearce, Martie	29
9	Buhl, Rita	22	3	Peterson, Diana	19
25	Crawford, Sharon	30	30	Pickering, Aileen	32
24	Creason, Mary	29	16	Rawlings, Mary	25
26	Fletcher, Maybelle	30	1	Reinemer, Joy	18
30	Futterman, Norma	32	5	Richardson, Gini	20
8	Gann, Bonnie	21	20	Ringenberg, Margaret	27
29	Glasson, Pauline	32	32	Robertson, Merry	33
29	Golden, Donna	32	14	Roehrig, Elaine	24
22	Gray, Sue	28	10	Rood, Jane Parker	22
32	Groce, Lorraine A.	33	38	Rose, Carole	36
11	Haberfelde, Bunny	23	8	Salmans, Caroline	21
19	Hamilton, Mary Ann Noah ..	27	34	Shea, Janna	34
21	Hankin, Jo Ann	28	17	Sheldon, Ruby	26
26	Havens, Kitty	30	2	Simler, Sue	18
21	Henney, Suzy	28	36	Sloan, Jean	35
4	Hensley, Tookie	19	13	Steinberger, Joan	24
10	Hinn, Dell	22	17	Thayer, Marge	26
25	Hoefer, Marie	30	27	Toon, Nancy	31
4	Hoffman, Janice	19	12	van der Linden, Pam	23
6	Jayne, Marion	20	12	Van Zelf, Lois	23
27	La Caille, Joy	31	9	Volk, Mary Jo	22
3	Levandoski, Theresa	19	15	Walton, Kathy	25
22	Lowry, Esther	28	15	Wells, Joyce	25
33	Mallary, Pauline	34	2	Wheeler, Gary	18
37	Mapelli, Velda King	36	1	Williams, Peggy	18
18	McCombs, Joan	26	14	Wilson, Marolyn	24
35	McCormack, June	35	13	Wright, Jenny	24
31	McGuire, Emma	33	20	Yoder, Janet	27



SNOOPY and the gang at the REDWOOD EMPIRE ICE ARENA

Wish you all smooth flights & success



©1958
United Feature
Syndicate, Inc.

Snoopy's Gallery features a museum containing Charles M. Schulz awards, drawings and personal memorabilia. The Gift Shop portion of the building houses the largest selection of Snoopy products in the world. The Gallery/Gift Shop is open daily from 10am to 6pm. It is located within walking distance of Coddington Center. Turn west off Range Avenue onto West Steele Lane. Snoopy's Gallery and the Redwood Empire Ice Arena is located one block down on the right.



ALL LOCATED AT:

REDWOOD EMPIRE ICE ARENA

1667 West Steele Ln. Santa Rosa, California



Hail and Farewell

Mary Pearson

Vice President
1977-1980

DIRECTORS

Velda King Mapelli
President
1977-1984



Pat Jetton
President



Esther Lowry



Pauline Glasson



Barbara Lewis
Secretary



"Tookie" Hensley



Shirley Winn

BAKERSFIELD/RIO BRAVO



Welcome to Bakersfield, site of the start of the eleventh annual Air Race Classic. Three years ago Rio Bravo was established as "99 Country" with the Southwest Section Meeting convening here in September of 1984. It seemed a natural to start the Air Race Classic in the same location.

The Kern River starts at the foot of Mount Whitney, highest peak in the continental United States (14,494'), and descends some 8,000' to its end, just west of Bakersfield. You are located very near its banks on the east side of Bakersfield at Rio Bravo, close to the foothills of the southern Sierra. It is spectacular country, and we are proud to invite you to our home.

Yes, the geography alone is awesome. Kern County is the third largest county in California with three climatic zones (Valley, Mountain, and High Desert) and three major mountain ranges (Tehachapis, Sierra Nevada, and Coast Range). The land was conducive to the establishment of two of the nation's preeminent defense research centers, world-famous Edwards Air Force Base and China Lake Naval Weapons Center.

And yet our setting includes the major industries of oil and agriculture. Production figures are astounding. Kern County is the number one oil-producing county in the United States. It is the number three agricultural-producing county in the country.

Despite the advanced industrial and business activity, Bakersfield has retained its relaxed atmosphere. Sophisticated, yes . . . and comfortable, loved and appreciated by many. Life here has a flow to it much like the river, fast-moving and exciting in places, calm and gentler in others. Make yourself at home and enjoy this style that is Bakersfield. We are especially happy to welcome you in the year, 1987, proclaimed by the Kern County Board of Supervisors "The Year of the Woman".





ACHSA B. PEACOCK DONNELS
Honorary Starter

Achsa joined the 99s as a charter member in 1929. Her flying career, begun in 1924, continues with much devotion 63 years later. Her leadership ("leaders spirit") in the Bakersfield Chapter is recognized and appreciated by all. She is a continued starter of many good things for us,

and it is appropriate that she should be Bakersfield's Honorary Starter for the 1987 Air Race Classic.



BRAD PEARSON, Official Starter



ROD MACHADO
Banquet Speaker

Rod Machado is a nationally and internationally traveled speaker. He has been a professional pilot, a college educator, a professional development consultant and is currently president of Human Potential Dynamics — a personal development company located in Huntington Beach, California. Rod has over 6000 hours

as a pilot with 5000 hours teaching in airplanes. He holds an Airline Transport License with many flight instructor ratings. Rod spends much of his time traveling the country delivering speeches and conducting workshops on humor, Aviation subjects and other personal development topics. He is an author, an educator and holds degrees in psychology and in aeronautical science.



Left to Right: **ELIZABETH SABA, Start Chairman** and **SHIRLEY GIUMARRA, Co-Chairman.**



BETTY WHARTON
Inspection



Left to Right: Bakersfield 99s - **JODI HISAW, EVELYN WILSON, KATHI NICKEL** and **MAUDE OLDERSHAW.**



Left to Right: **PRISCILLA SPENCER, SUZANNE MCGOWAN, JANE ROOD, BEVERLY HABERFELDE** and **DOROTHY ROBINSON.**



JOAN PAYNTER
Timer and Judge



NORMA DRAPER & HELEN MCGEE
Timers and Judges



Kingman Aviation fuel attendants (l) LOU CARDENAS (r) MANUAL BELTRAN.

KINGMAN

Founded in 1882, Kingman, Arizona was named after Lewis Kingman, a locating engineer for the Santa Fe Railroad. Located in Mohave County in northeast Arizona, Kingman has been a distribution center for mining and ranching activities since the completion of the transcontinental Atlantic and Pacific railroad. The City has also been a stopping point for travelers moving both east and west.

Kingman has a history as an aviation community, too. Charles Lindbergh stopped in Kingman periodically during his cross country mail flights. Over 7,000 men were stationed at the Kingman Army/Air Corp Gunnery School during World War II, and the airfield was the site of the salvage yard for over 5,000 "warbirds" following the war.

The Kingman area is now populated by over 23,000 people and residents enjoy a mild high desert climate year round. Rainfall averages seven inches per year and temperatures seldom break the century mark.

Development of an industrial park located adjacent to the airport has allowed for the upgrading of the airport facilities originally constructed in 1940. The main runway, 3/21, was reconstructed 10 years ago and is rated for DC-9 aircraft. The secondary runway, 17/35, was reconstructed in 1986. You will also find an improved parking apron and fueling operations available from a modern fuel truck.

Mohave County Airport Authority, Inc. and the Kingman Area Chamber of Commerce welcomes you to Kingman and encourages your frequent returns.



99s Left to Right: EVELYN DORST, MARJORIE BARTIK, SANDY CARR and BETTY WRIGHT.



CATHY MORRELL
Chairman



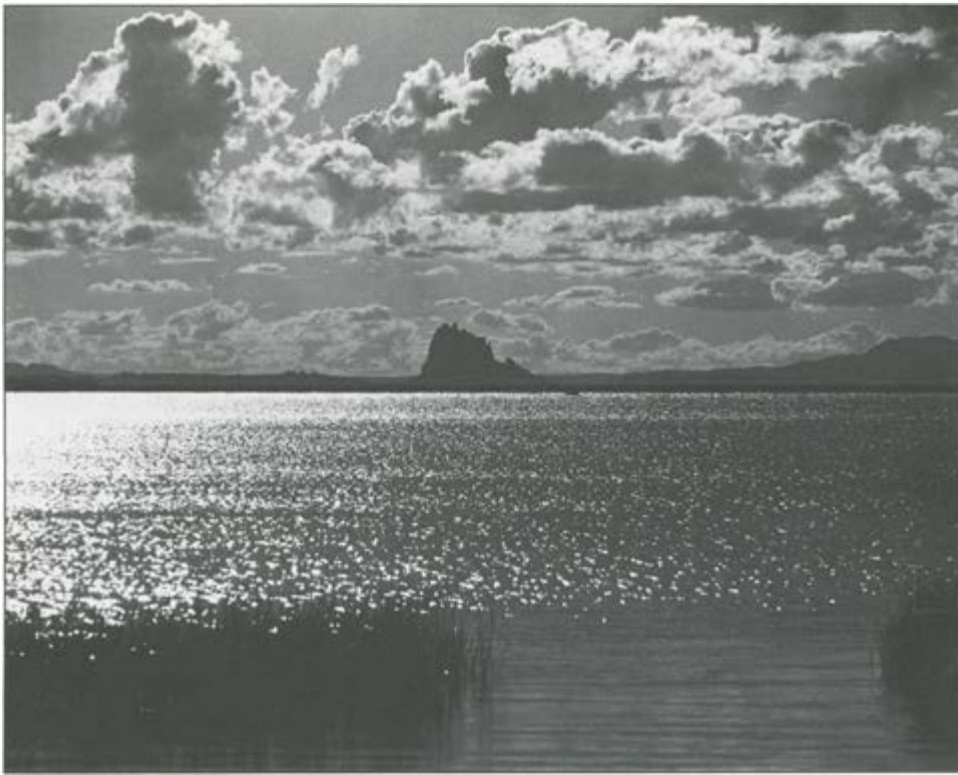
BOB BRACKETT
Brackett Aircraft Co.

FARMINGTON

Farmington — the Navajos call it Totah, the meeting place at the convergence of three rivers in the colorful land of the Navajo, Ute, Apache, and Pueblo Indians. Once the home of the ancient Anasazi, Farmington is now a center of trade and modern convenience — the largest city in the Four Corners Region — from which visitors may explore Mesa Verde, Chaco Canyon, Salmon, and Aztec Ruins.

Visitors to the Farmington area can enjoy some of the best year-round fishing in the county at Navajo Lake — boat rentals and marina along with camping facilities are available, and in the San Juan River, only minutes from Farmington.

The Farmington area has over



1,200 rooms in 24 hotels and excellent dining facilities in over 72 restaurants.

Located 34 miles from Farmington on Highway 44 is Angel Peak, the dwelling place of "sacred ones" to the Navajo people. This geological formation began forming more than 40 million years ago. And in nearby Aztec is the Aztec Museum, displaying native arts and crafts, prehistoric artifacts and one of the most extensive collections of minerals and rocks in the Southwest. Also located in Aztec is the Aztec Ruins National Monument. A self-guided trail leads through parts of the 500-room Indian pueblo and great kiva, inhabited some 800 years ago by Chacoan Indians.



Left to Right: GUS BYRUM, Airport Manager; TOM TAYTOR, Mayor; CAYLA CILLESSEN, Stop Chairman; and RON BORCE, Plane Owner.



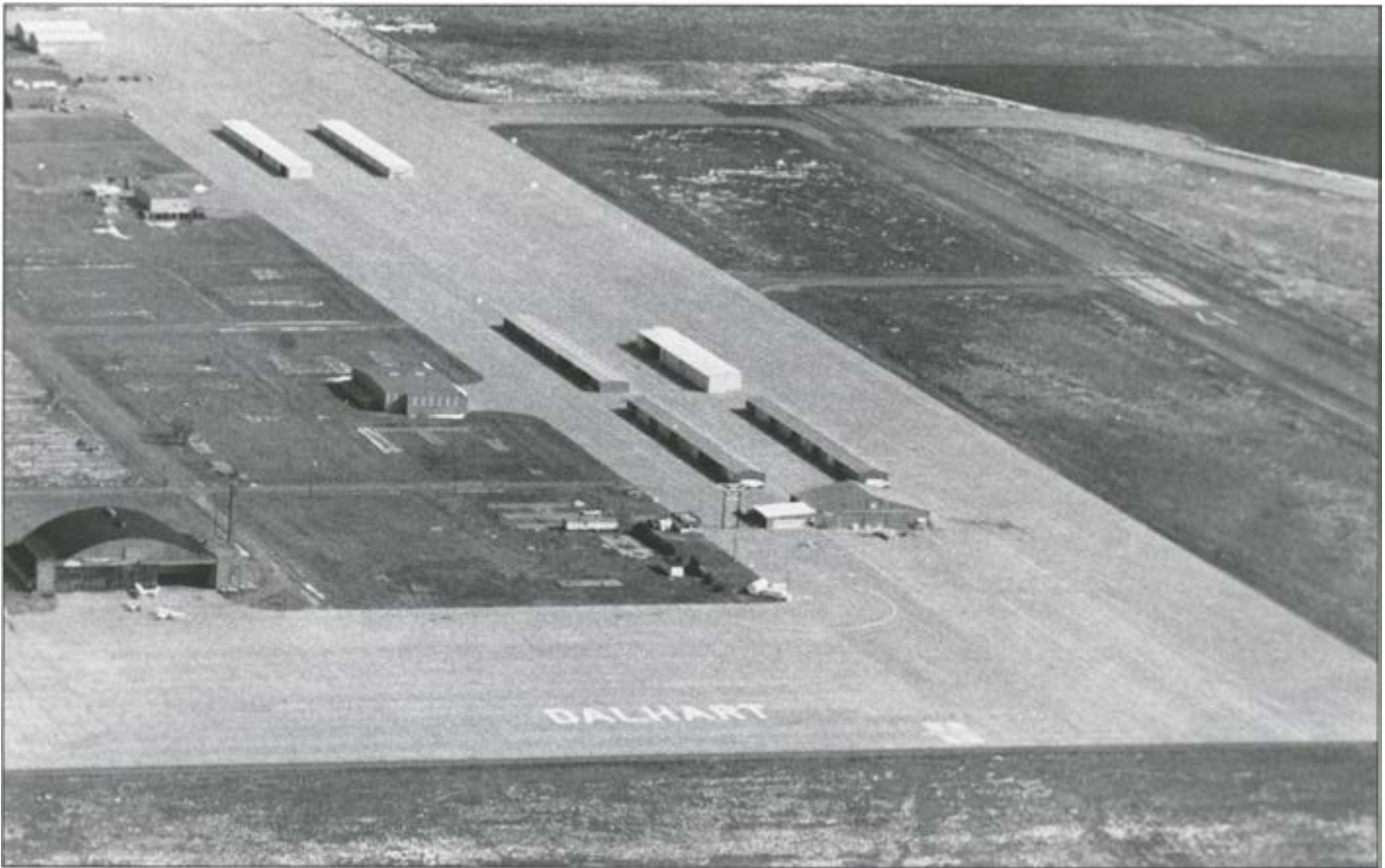
Left to Right: ANITA HESSIN, Chief Timer; LINDA HORN, Timer; and PATRICIA McFARLAND, Timer.



Left to Right: JIM KADRMAS, Controller; KELLY MATHEWS, Controller; GEORGE TANNER, Tower Chief; and LARRY MOFFETT, Controller.



Left to Right: MARLIETTE BEARD, Assistant; SARAH KAYNOR, Assistant; and MONA HEATH, Assistant.



DALHART

Dalhart, Texas history is based on the three million acre XIT Ranch. These unfenced and unmarked acres became a unit when the State of Texas issued them like a big check to Farwell Brothers of Chicago in payment for constructing the \$3,000,000 red granite State Capitol in Austin.

The original XIT Ranch, since sold into smaller ranches and farms, covered portions of ten counties. Roughly 200 miles long and 30 miles wide, it stretched from near Lubbock, Texas northward to Oklahoma line. It's headquarters were established at Dalhart in 1901. The XIT Reunion, held the first weekend each August, is the biggest celebration in the world based on the history of a ranch.

Because of excellent thermals the Army Air Corps selected Dalhart as a training site for glider pilots in WW II. Pilots and bombardiers for B-29's were also trained. Flying enthusiasm continues to thrive here at the Top of Texas. This community of friendly hard-working people boasts one airplane per 100 population, with all locally owned planes being hangared each night. Western hospitality and good service await you.



The Empty Saddle Monument, a tribute to deceased cowboys.

GEORGE BRIANT
Airport Manager

JOE WALDROP
FSS Manager



Left to Right: CHRIS McCLAIN, ANN PIGGOTT, Timers; and IMA JEAN HUFF, Chief Timer.



CECIL and PEARL INGRAM, FBO.



WINFIELD

Strother Field Airport/ Industrial Park owned and operated by the cities of Arkansas City and Winfield, Kansas, is located midway between each city (fives miles from either). The Park offers city or rural living, two hospitals, two daily local newspapers, four local radio stations, cable tv, a wholesale trade area of 370,000 population, varied recreational outlets, and proximity to metropolitan centers: Wichita, 43 miles; Tulsa, 90 miles; Oklahoma City, 120 miles; and Kansas City, 180 miles.

At an elevation of 1,160 feet, with crystal clear air, the area has beautiful rolling plains on the fringes of the famed Flint Hills. It is bordered on the west by the Arkansas River (and nearby Kaw Dam and Reservoir) and on the east by the Walnut River Valley. It boasts eight golf courses within a 30-mile radius, championship tennis courts, excellent fishing, hunting, and water sports.

The all-weather airport has two paved runways — 17/35-5500' and 13/31-4100'. The field has a TVOR (109.6) and an instrument landing system, MIRL, rotating beacon, terminal building and restaurant. There are 16 industrial plants located on the field. Strother Field has more flying days than any other place in the nation — an average of 350 days a year.



Downtown Winfield.



Arkansas City welcomes you!

KAY DUNLAP
JEAN HENDRICKS
Timers



FRED A. TUPPER, Airport Manager.



CAROLYN SCHMALZ
Chief Timer



FBO - Left to Right - Front Row: MELVIN and DONNA CURRENT. Back Row: BRIAN, CINDY and STEVE CURRENT.

JONESBORO

Located 70 miles across the flat Mississippi River bottom lands from Memphis, Tennessee, Jonesboro is nestled in the rolling, wooded foothills of Crowley's Ridge.

It is a city of about 35,000 which has almost every convenience of a big city and every comfort of a small town.

If you form a triangle by connecting Little Rock, St. Louis and Memphis, Jonesboro stands out as the largest metropolitan city in what amounts to a 17,000 square mile triangular area. And you don't have to leave Jonesboro for big city conveniences.

This city is a regional shopping center with several major shopping areas including the region's largest covered shopping mall.

Jonesboro's Industrial Community included plants of major U.S. firms such as Dupont, GE and FMC.

Jonesboro is located at the edge of a major rice-growing area where, some argue, the finest Duck Hunting in the world is found. There are numerous fishing waters nearby and the city is within easy driving distance of large lakes suitable for boating and water sports.

Jonesboro is the home of Arkansas State University which offers broad academic and a full sports program. ASU not only has a Modern Football Stadium and Outdoor Track facility, but it also has the newest and largest Indoor Sports and Entertainment Complex in Arkansas. It features more than 10,500 theater style seats, which automatically retract and virtually disappear when not in use. It's possible to play three separate tennis matches, two full-court basketball games and six volleyball matches *all at once* in addition to catering a sit-down dinner for 500. This immense facility will hold more than 11,000 fans for major concerts and other stage performances.

The pace of life is not frantic. Rather it is more likely to be friendly.

Perhaps all this is why, in the latest issue of "The Best Towns in America," Jonesboro stood tall among the leaders.



STEVE RALSTON
Manager FSS



WYATT DOYETTE
FSS



KATTIE CHESTER
FSS



ART MOLLINS
FSS



CHRISTINE HIGGINBOTHAM
FSS



CHARMIANE W. FREEMAN
Timer

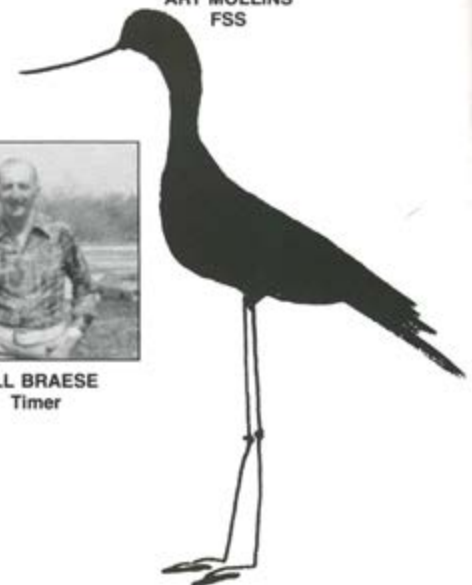


EVELYN BRAESE
Chief Timer



BILL BRAESE
Timer

BOB HOLLOWAY
Airport Manager
Race Chairman



COLUMBUS

Welcome to the Columbus Municipal Airport; gateway to the City of Columbus, Indiana. We are very excited about the arrival of "99" Air Race contestants and feel sure you will be more than satisfied with our facilities. The airport terminal building, completed in 1983, houses the FBO; Rhoades Aviation, the Hangar Five restaurant and the office of the Airport Manager. Columbus not only has a nice airport, but has become world-famous as a showcase of contemporary architecture. It has 48 major structures designed by major architects; more than any town in the United States! More than 50,000 visitors annually come to Columbus to view the architecture. The Columbus Visitors Center provides slide presentations, printed material and a two-hour guided bus tour of the community.

Columbus, also known as an "All American" city, has an abundance of fine motels, restaurants and major industries. Columbus is easily accessible to other cities such as Indianapolis, Louisville and Cincinnati.

From all of us at Columbus, we wish you a safe and happy trip!



Rhoades Aviation, Inc. staff.



ATC Personnel - Left to Right: DON REYNOLDS and BOB BRYANT.



Left to Right: LARRY STONE, Maintenance Supervisor; KIM HAND, Office Manager; and WENDELL ROSS, Airport Manager.



LAWTEN NEWBERRY
Tower Manager



MARY KAY SCHROEDER
Chief Timer



Left to Right: NANCY WARREN, Stop Chairman; ANNE BLACK, Timer; ESTHER WYANDT, Timer; and DOROTHY SMITH, Timer.



GREENVILLE



Photo by Joe Jordan

Greenville's forested mountains, wildlife and waterfalls provided homeland to the Cherokee Indians only two centuries ago. Up until 1777, Greenville was Indian territory established by a treaty after the French and Indian War.

After the American Revolution, however, the newly established state legislature took immediate actions to open Greenville to settlers and growth began. Wealthy low-country planters, plagued by South Carolina's coastal malaria, made Greenville a resort community by building beautiful summer homes in the Upstate.

During Reconstruction, a textile industry began to grow up along the Enoree, Saluda and Reedy Rivers. In the years that followed, numerous mills sprang up along the western edge of the city, and jobs brought migration from surrounding states. Mill villages, stores and public transportation quickly followed. Greenville had become the textile center of the world by the 1930's. After being recognized for decades as the "Textile Center of the World," Greenville now boasts a highly diversified economy.

The official 1985 U.S. Census figures show Greenville's city population at 58,242 within a 28 square-mile area, and county population at 287,913 within a 789 square-mile area. The Metro Area, which includes Greenville, Spartanburg and Pickens Counties, have a combined population of 599,600.

Visitors to Greenville enjoy its comfortable weather with four different seasons. Southern sun and protection by mountains on three sides ensure beautiful weather throughout the year. Temperatures range from an average high of 72.9 degrees to an average low of 51.6 degrees. Annual precipitation is 46.42 inches.

Greenville is a growing southern city located in the northwestern corner of South Carolina. A portion of the Blue Ridge chain of the Appalachian Mountains crosses the uppermost section of Greenville County reaching its highest South Carolina altitude of 3,548 feet at Sassafras Mountain. Just 4¼ miles from the city, Paris Mountain rises to 2,054 feet.

With uncommon natural beauty, points of historic interest and outstanding cultural opportunities, Greenville welcomes visitors in a friendly, glad-to-see-you way. Have a wonderful stay.



JOHN FERGUSON
Airport Manager



Left to Right: KAREN WINTERS; RUTH LESLEY; DOT WALDROP; AUDREY McKINNEY; PAT BOOKER; MARTHA McWHITE; GARY WHEELER, Chairman; and NANCY TEASLEY.



NANCY WRENN
Chief Timer



LOUISE WHITE
Impound/Inspection Chairman



DOUGLAS J. DuPEROW
Scorer



RUTH WHITE
Timer

Greenville



HELEN ZUBROW
Chief Judge



DEE STEELEY
Timer



ANNE SHIELDS
Judge



HELEN WILKE
Judge

AIR RACE CLASSIC 1987 Handicaps

MAKE/MODEL	HP	MPH	MAKE/MODEL	HP	MPH
BEECHCRAFT			Cardinal 177A	180	129
Baron C55-E55, 58	570	220	Cardinal 177	150	119
Baron A55-B55	520	213	Cutlass 172 RG	180	143
Duchess 76	360	175	Skyhawk R 172K XP	195	132
Travel Air B95A-E95	360	185	Skyhawk 172 N-Q	160	120
Bonanza 36 & A36	285	182	Skyhawk 172 M	150	119
Bonanza V35A, V35B	285	182	Skyhawk 172 I-L	150	115
Bonanza V35	285	183	(172 I-L — NOT eligible with Prop #IC172/MTM 7553)		
Bonanza S35	285	185	Skyhawk 172 ('62-'67)	145	112
Bonanza E33C/F33C	285	187	Skylark 175C	175	122
Bonanza (Debonair) C33A-F33A	285	183			
Bonanza P35	260	179	GULFSTREAM COMMANDER (GRUMMAN AMERICAN & ROCKWELL COMMANDER)		
Bonanza G33	260	177	Cougar GA-7	320	173
Bonanza (Debonair) B33-F33	225	166	Rockwell Commander 114	260	168
Sierra C24R ('82-)	200	140	Rockwell Commander 112B	200	147
Sierra B24R C24R ('77-'81)	200	139	Rockwell Commander 112A	200	145
Sierra A24R	200	141	Rockwell Commander 112	200	144
Musketeer A23/24	200	132	Grumman Tiger AA5B	180	142
Musketeer C23 Sundowner	180	123	Grumman Cheetah AA5A	150	134
Musketeer A23 II & III	165	120	Grumman Traveler AA5A ('75)	150	128
Musketeer 23	160	118	Grumman Traveler	150	119
Musketeer Sport A23-19, B19	150	115			
Musketeer B23 & C23 Custom	180	122			
BELLANCA			MAULE		
Super Viking 17-31A (1978)	300	173	M-5 235C	235	141
Super Viking 17-31 & 17-31A ('77)	300	169	M-4 220C	220	137
Super Viking 17-31 (Vikings - Lycoming only)	290	168	M-4 210C	210	135
Bellanca 14-19-3 A-C	260	167	M-5 180C	180	128
Decathlon 8KCAB	180	120			
Citabria 8GCBC	180	120	MEYERS		
Citabria 7KCAB & 8KCAB	150	119	200D	285	185
Citabria 7GCBC & 7GCAA	150	118	200 A-C	260	182
CESSNA			MOONEY		
Cessna 310 R	570	216	M 201J	200	176
Cessna 310 G-Q	520	209	Chaparral M20E	200	161
Cessna 337G	420	180	Executive M20E	200	152
Cessna 337 A-F	420	175	Master M20D	180	126
Centurion 210 J	285	182	Ranger M20C	180	149
Centurion 210 G & H	285	181	Statesman M20G	180	147
Centurion 210 F	285	176			
Centurion 210 D & E	285	177	PIPER		
Cessna 210 B & C	260	172	Aztec PA23-250 ('77-)	500	196
Cessna 205 & A	260	143	Aztec PA23-250 ('76)	500	194
Super Skywagon U-206, U-206A & P-206 B-E	285	150	Seneca PA-34	400	177
Skywagon 185 A-E	260	149	Seminole PA44-180	360	173
Skylane R182 RG	235	160	Twin Comanche PA-39	320	187
Skylane 182Q	230	148	Twin Comanche PA-30 C	320	184
Skylane 182P ('75-'76)	230	146	Twin Comanche PA-30 A, B & CR	320	186
Skylane 182P ('74)	230	144	Lance PA32-300R II	300	173
Skylane 182 E-N	230	144	Lance PA32-300R	300	172
Cessna 180 E-K	230	146	Cherokee 6 PA 32-300 ('78-)	300	156
Cardinal RG 177 ('77-)	200	156	Cherokee 6 PA 32-300 ('77)	300	150
Cardinal RG 177 ('74-'76)	200	155	Cherokee 6 PA 32-260 ('78)	260	151
Cardinal RG 177 ('71-'73)	200	152	Cherokee 6 PA 32-260 ('77)	260	145
Cardinal 177B II ('77-)	180	136	Comanche PA 24-400	400	200
Cardinal 177B II ('75-'76)	180	134	Comanche PA 24-260 C	260	175
Cardinal 177B ('70-'74)	180	130	Comanche PA 24-260 & B	260	176
			Comanche PA 24-250	250	171

MAKE/MODEL	HP	MPH	MAKE/MODEL	HP	MPH
Comanche PA 24-180	180	145	ROCKWELL COMMANDER		
Dakota PA 28-236	235	150	Lark 100L	180	117
Cherokee PA 28-235 B-F (constant speed prop)	235	145	Darter 100	150	108
Cherokee PA 28-235 B-F (fixed pitch prop)	235	144	WING		
Charger & Pathfinder PA 28-235	235	144	D-1 Derringer	320	193
Arrow PA 28-200R III & IV	200	152			
Arrow PA 28-200R II	200	151			
Arrow PA 28-200R	200	150			
Arrow PA 28-180R	180	147			
Archer PA 28-181 ('78-)	180	135			
Archer PA 28-181 ('76 & '77)	180	129			
Archer PA 28-181 ('74 & '75)	180	127			
Challenger PA 28-180 & PA 28-180 B-G	180	127			
Warrior PA 28-161 II	160	127			
Warrior PA 28-161	160	126			
Cherokee PA 28-160C	160	118			
Cherokee PA 28-160-B	160	118			
Warrior PA 28-151	150	118			
Cherokee PA 28-150-C	150	118			
Cherokee PA 28-140	150	116			



DESIGNATED AIRPORTS ON THE ROUTE

AIRPORTS

STATUTE MILES

L91	Rio Bravo, California	
L70	Agua Dulce, California (fly by)	
IGM	Mohave County, Kingman, Arizona	322.78
FMN	Farmington Municipal, Farmington, New Mexico	334.65
DHT	Dalhart Municipal, Dalhart, Texas	319.96
WLD	Strother Field, Winfield, Kansas	316.12
JBR	Jonesboro Municipal, Jonesboro, Arkansas	367.11
BAK	Columbus Bakalar Municipal, Columbus, Indiana	350.56
7A1	Donaldson Center, Greenville, South Carolina	366.90

Total Statute Miles

2,378.08

Events

Inspection Open	June 26, 1987 0800 PDT
Arrival Deadline	June 26, 1987 1500 PDT
Take-off Banquet	June 27, 1987
Final Inspection Deadline	June 28, 1987 1700 PDT
Safety Seminar - Mandatory	June 28, 1987 1100 PDT
Briefing — Mandatory	June 28, 1987 1300 PDT
Take-Off Breakfast	June 29, 1987 0530 PDT
Briefing — Mandatory	June 29, 1987 0630 PDT
Take-off	June 29, 1987 0830 PDT
Finish Deadline	July 02, 1987 1700 EDT
Debriefing — Mandatory	July 03, 1987 1600 EDT
Annual Meeting Air Race Classic	July 03, 1987
Awards Brunch	July 04, 1987



PEGGY WILLIAMS
San Rafael, CA



JOY REINEMER
Santa Rosa, CA



GARY WHEELER
Greenville, SC



SUE SIMLER
Pearland, TX

CLASSIC 1

Cessna 182R 230 hp

Sponsored by:
Midas Muffler Company
Muffler repair
Daly City, California
Let's Fly, Inc.
FBO
Santa Rosa, California
Keith Sportswear, Intl.
San Rafael, California

An annual "adrenalin pumping treatment" is what brings Peggy for her fourth Classic. With Instrument and 900 hours, Peggy is a member of Marin County 99s. Husband Roger, a former pilot and Peggy have three children and four grandchildren. Seeing Top Gun while weathered in on the race last year proved Peggy's vivid imagination — cows are really not allowed on freeways, Peggy.

Joy, a home decorator, enjoys flower arranging and swimming — hails from Santa Rosa 99s where she was Co-chairman of our first Air Race Classic and Chairman of our 10th anniversary race . . . THANKS, Joy. Her 853 hours with single land/sea doesn't compare with husband, James, as a Captain for United Airlines, but their Cessna 185 gives the greatest pleasure for both . . . they have four children and one grandchild. Joy, we remember your one Air Race Classic and your pilot, Helen McGee, giving excellent WX advice — free of course!

All the way #1 — ??



I didn't do it! I didn't do it! What is it I didn't do?

CLASSIC 2

Piper PA 28-181 180 hp

Sponsored by:
Computer Assisted Records (CAR)
(custom software/hardware)
Houston, Texas
Airworks
(aviation theme — t-shirts/pillows)
Pearland, Texas

Being a night charge nurse in a Recovery Room of Greenville Memorial would certainly qualify Gary to recognize an addiction . . . which she says racing is . . . only that racing and meeting with racing buddies help relieve the withdrawal symptoms. This is Gary's seventh Classic . . . with 1050 hours — Instrument and single land/sea Gary is building a replica of a 1952 MGTD . . . if Gary could decide where the "on/off" key is she might continue her interest in computers . . . a member of Foothills 99s.

Sue classes herself as a "Temp" (Temporary Agency Employee). Airworks, her business, is t-shirts and pillows — making this her sixth Classic . . . with 2500 hours, Commercial, single/multi land, Flight Instructor Airplane/Instrument, Advanced/Instrument Ground Instructor and a member of Space City 99s. Bet "aviation" is a household word as husband Jim, yes a pilot, occupation is listed as: logistical-Rockwell Aerospace-Johnson Space Center, Houston, Texas.



Greenville Downtown Airport
South Ramp
P.O. Box 16555
Greenville, SC 29606
(803) 242-4201

**GREENVILLE AVIATION
FLIGHT SCHOOL**

*Rentals - Rides - FAA Writtens
Pilot Service - Aerial Photography*



THERESA LEVANDOSKI
Freedom, CA

DIANA PETERSON
Watsonville, CA

CLASSIC 3

Beech Bonanza F33-A 285 hp

*Sponsored by:
New West Foods
Watsonville, California*

Coming up three for Diana — do not practice any more of those “freeze frame” fly-bys and both your tanks will always have liquid in them, not just fumes! Commercial and Instrument with 860 hours Diana was welcomed into the Civil Air Patrol — rewarding work especially with the Monterey Bay 99s. Husband, Richard, pilot, is an accountant. They have three children and one grandchild. Diana says “housewife” — yet there is plenty of flying for Freedom Press for their partner.

Theresa is looking forward to the start of this race from Bakersfield where she grew up and graduated from high school . . . with 750 hours this is her second Classic — an active member of Monterey Bay 99s. Theresa has two children and is a Systems Technician for AT&T, which means she installs and maintains business telephone systems.

Special Thanks to



JUANITA HALSTEAD



SHIRLEY WINN

for Flying the Chase Plane

Thank You

Francis Brown
Don Birchum
Lanmon Aerial Photography
Wayne Dugger



TOOKIE HENSLEY
Riverside, CA

JANICE HOFFMAN
Redlands, CA

CLASSIC 4

Cessna 172M 150 hp

With Commercial, Instrument-1400 hours and a newly acquired Flight Instructor . . . Tookie enjoys teaching something “they really want to learn” . . . this makes Tookie’s seventh race . . . “what do you mean every year is a laugh?” . . . Tookie wouldn’t mind winning! Don, recently retired, is a pilot and they are proud parents of two children and five grandchildren.

Janice is again Tookie’s partner, for the third time, but only after taking a “vow” of secrecy not to reveal happenings of the past . . . is that fair? Janice has 230 hours and two children . . . is employed as appraiser for Home Savings of America. This team hails from Inland California 99s.

**75% LESS
MAINTENANCE**

**NEW
FROM
GILL**

Teledyne Battery Products’ new improved G35 aircraft battery features a hybrid construction for reduced water loss that can mean up to 75% less maintenance required. The new polypropylene container offers increased impact resistance for even greater dependability.

For general aviation aircraft with 12 volt systems. Next time you replace a battery, make it a Gill.



The Original Equipment Aircraft Battery

TELEDYNE BATTERY PRODUCTS

840 WEST BROCKTON, REDLANDS, CA 92374, (714) 793-3131





GINI RICHARDSON
Yakima, WA

CLASSIC 5
Cessna 172P 160 hp

With 26,000 hours — Airline Transport, single/multi land and sea, Flight Instructor Airplane/Instrument and Glider, Commercial Helicopter, FAA Examiner and Advanced/Instrument Ground Instructor. Gini, of Inter Mountain 99s, makes this her eighth Classic. As more diversion she has added a (Juris Doctorate) law degree. Pilot husband, Ralph, owns an aerial spraying business. They are proud parents of daughter, Jill, a Captain on Boeing 727 Alaska Airlines.



MARION JAYNE
Palatine, IL

CLASSIC 6
Cessna 172P 160 hp

Sponsored by:
Civil Air Patrol
Tailwinds
(direct mail - aviation gifts)
Palatine, IL

Marion, with 5000 hours, is President of Tailwinds — an aviation direct mail gift catalogue.

She has Airline Transport, single/multi land, Flight Instructor Airplane/Instrument, member of the Chicago Area 99s. She has four children (two pilots) and four grandchildren.

Marion says "to become a better pilot" is the reason she is participating in this, her eleventh Classic. Marion participates in many sports and we can attest to her being a real winner.

**Discover
the land of
Discovery**



... Fly in to historic Columbia
and relive the glorious days
of the Gold Rush!

SERVED DAILY BY

The Union Democrat

LEADING NEWSPAPER OF THE MOTHER LODE

SONORA, CALIFORNIA

Since 1854

**GOOD LUCK
CLASSIC 2**

**CAROLYN'S
FLIGHT
ACADEMY**

Greenville, SC



GEORGIA BROWN
Palo Alto, CA

PATTI BUCHANAN
Palo Alto, CA



CAROLINE SALMANS
Stamford, CT

BONNIE GANN
Merritt Island, FL

CLASSIC 7

Cessna 172 RG 180 hp

Sponsored by:
Centurion Flight Services, Inc.
Palo Alto, California
AVEMCO Insurance Company
Frederick, Maryland

Georgia is a Research Analyst related to Doppler Weather Radar and conducts studies on obstruction standards for SRI International, also a part time Instrument Instructor and Charter Pilot for Centurion Flight Services Inc. Georgia, with Commercial and 1100 hours, credits her one Classic as a real learning experience — challenging, competitive and professional —

Welcome to your first Air Race Classic, Patti . . . with 170 hours — member of Santa Clara 99s — Patti is a Chemistry Teacher in the Sequoia Union High School District and has four happy adult children and eight grandchildren . . . beat this, Patti has climbed mountains on three continents, cycled over the Alps and now excited about flying a small plane across our USA!!

CLASSIC 8

Grumman AA5B 180 hp

Experience, challenge, enjoyment of competition with other women pilots is the reason Caroline is making this her fifth Classic . . . with 1300 hours, Caroline has Commercial, single/multi land, Flight Instructor Airplane/Instrument. Husband, Jerry, a pilot — is manager of market development and G.E. national office program for IBM. There are two student pilots amongst their four children and one grandchild. Caroline is self employed as a Flight Instructor with Carney Aviation Executive and a member of Connecticut 99s.

Bonnie and husband, Archie — investor and consultant — fly throughout the U S for business and pleasure. They have seven children — four pilots. Florida Spaceport 99s claims Bonnie . . . 2800 hours, Commercial, single/multi land, single sea, Flight Instructor Airplane/Instrument and Advanced/Instrument Ground Instructor. She is part time Instructor and air taxi pilot. Coming up will be Bonnie's fifth Classic.

Lemucchi's Tam O' Shanter

Recommended by Holiday Magazine since 1980



A landmark restaurant in Bakersfield famous throughout California since 1971

Specialties of the Restaurant

Appetizers: seafood fettuccine, prosciutto and melon, escargots, smoked salmon, avocado and bay shrimp vinaigrette

Salads: tortellini salad, Chinese pasta salad, caesar salad, spinach salad with goat cheese, pasta seafood salad, curried chicken salad in papaya

Entrees: tournedos bearnaise, rack of lamb, veal in rosemary and peppers, prime rib, quail, chicken tarragon, peppered New York, veal in lemon and butter, Australian lobster tail, scampi, all manner of fresh fish . . . petrale sole, salmon, sea bass, halibut, swordfish

Desserts: raspberry cheesecake, chocolate cheesecake, butterfinger pie, key lime pie, raspberries Chambord, macadamia nut tart



Award Winning Wine List featuring over 90 wines and champagnes

Unique Luncheon Menu

Live Entertainment in Bakersfield's Most Beautiful Disco

324-6774

for reservations
2345 Alta Vista
Bakersfield, CA 93305
MAJOR CREDIT CARDS ACCEPTED





MARY JO VOLK
Pasadena, CA

RITA BUHL
Long Beach, CA

CLASSIC 9
Cessna 172H 145 hp

"Happy to be a part of our Air Race Classic" says Rita, and we are happy to have this mother/daughter team for their third Classic. Nine children, three pilots, and six grandchildren belong to Doctor Buhl — Thoracic Surgeon and pilot — and Rita. With an Instrument rating and 1255 hours, retired nurse, member of Long Beach 99s, she is active in charity work. Strange how we dislike wiping oil from under fuselage, Rita.

Mary Jo enjoys hearing compliments of Mom's X-wind landings! She is self employed as an independent contractor paralegal . . . husband, David, is an attorney . . . she also hails from Long Beach 99s and log book shows 500 hours — hopes next year shows "Instrument" as well as a completed course in Japanese — KōUN-UN-GA-Ī. And shall we add some perfect X-wind landings like Moms!



JANE PARKER ROOD
Bakersfield, CA

DELL HINN
Salinas, CA

CLASSIC 10
Piper PA 28-181 180 hp

Sponsored by:
Bakersfield Californian
(newspaper)
Bakersfield, California
Rio Bravo Resort
Bakersfield, California
Great Western Bank
Bakersfield, California

" 'Tis great to have this first time Classic team." Jane is Vice President and Branch Manager for Great Western Savings in their Bakersfield-Main Office. Also studying Organizational Behavior at the University of San Francisco and now with 536 hours, hopes this race proves her navigational and flying skills. Jane is at home with Bakersfield 99s and had Robert, her husband — a loan consultant — realized that a birthday gift to Jane of a private license was going to cost the price of a Bonanza . . . well! They have four children.

Dell says — RETIRED — but read on . . . with 8400 hours she has Commercial, single land/sea, multi land, Instrument and Glider — to "keep her hand in" she tows gliders and gives rides. In her Civil Air Patrol duties — other than three active searches — she has one CAPLOT mission (live organ transplant) and by now we hope you have an affirmative answer to your SCANNER exam. She and retired physician/surgeon husband, George, do medical missionary work — their two children and three of the five grandchildren are pilots. Very active member of Monterey Bay 99s . . . remember this is the lady who in 1955 took her daughter in an AWTAR (Power Puff Derby) then twenty years later her granddaughter was her co-pilot.

Heritage
REGENCY
COURT
"ECONOMY WITH CLASS"
inn

3232 N. Summit
Arkansas City, KS 67005

(316) 442-7700
(800) 325-9151 - National
WATS Line
(800) 362-0912 - In Kansas
WATS Line

THANKS TO:

Carpet Cave
Stinson Stationers
Saba's Men's Wear
Dona's Showcase Unique Jewelry
The American Jewelry Co.
Giumarra Vineyards
Hustead Development



BUNNY HABERFELDE
Bakersfield, CA

JANICE BROWN
Bakersfield, CA



LOIS VAN ZELF
Redding, CA

PAM VAN DER LINDEN
Fallbrook, CA

CLASSIC 11
Beechcraft C24R 200 hp

Sponsored by:
KHG Aviation Inc.
(air charter operation)
Bakersfield, California

Happy to have this first time team! Janice continues to build on the 3000 hours by using her Commercial, single/multi land, Instrument, Flight Instructor Airplane as Charter Pilot, Flight Instructor and Operations Manager at KHG Aviation Inc. — also, it says Private Glider on the certificate. Husband, Nash, is an architect and pilot. This team hails from Bakersfield 99s!

"Bunny" traded her piano teaching profession to Real Estate Salesperson and is employed by Great Western Reality & Builders. Husband, Steve, is a rancher — raises Quarter Horses. They have three children. "Bunny" with 309.6 hours (isn't that exact) is working on the Instrument rating and is interested in photography and sailing. Yes, you two will be able to add some humorous experiences for next year's program . . . Good Luck!

CLASSIC 12
Bellanca Viking 17-31A 300 hp

Sponsored by:
Fallbrook Real Estate Company
Fallbrook, California

Eleventh Classic — couldn't run it without you, Pam! Husband, Victor, is a pilot and rancher — their three children and three of their nine grandchildren are pilots and an addition of one great grandchild since last year making three. With 3258.3 hours, Commercial and Instrument, Pam is a hard working member of Palomar 99s. She devotes time to Aviation Commission, Chamber of Commerce, Board of Director of Fallbrook Community Airpark, and is a Real Estate owner/broker — how did you ever have time to become a ranking tennis player?

Lois makes this her fourth Classic. Is employed as Deputy Sheriff, Shasta County, the last three years as liaison between the field officers, District Attorney and the Courts. Husband, Robert, is retired after 27 years of Law Enforcement. Lois . . . how about 24 hours at each stop so as to learn the area and people — with 185.8 hours, Lois is a member of Mt. Shasta 99s.

Best Wishes to Pam and Lois
from
Fallbrook
"Avocado Capitol of the World"

Air Race Classic #12 is sponsored by FALLBROOK REAL ESTATE COMPANY, selling real estate in beautiful northern San Diego County since 1947. We specialize in avocado groves, retirement ranchettes, home sites and acreage. Contact Pam van der Linden — Palomar Chapter 99s.

FALLBROOK REAL ESTATE CO.
330 S. Main St. Fallbrook, CA 92028
(619) 728-1143

Fallbrook Real Estate Company also handles vacation condos/timeshares in Mexico. Spend your vacation in Puerto Vallarta, bahia kino in Sonora or San Felipe, Baja California Norte.



JENNY WRIGHT
Santa Barbara, CA

JOAN STEINBERGER
Goleta, CA



ELAINE ROEHRIG
Utica, NY

MAROLYN WILSON
Whitesboro, NY

CLASSIC 13

Piper PA 28-236 235 hp

Sponsored by:
Suzuki-Kawasaki of Goleta
(motorcycle sales and service)
Goleta, California
RoadRunner Club
(mobile home and RV park)
Borrego Springs, California
WestLake Park
(mobile home park)
Fresno, California

... makes Classic number three for this team — Jenny with 973 hours and Instrument has replaced Physical Therapy of the past 15 years to helping husband Bill in the family real estate business — Wright & Company. Jenny, are Bill (a pilot), those four children and four grandchildren good listeners on your return from the race?

Joan is still doing parts for Stratman Aero Service — has added interest in Suzuki & Kawasaki Motorcycle sales and service ... never giving up airplanes, with 2980 hours, Commercial and Private Glider. Norm, husband, is a Q.C. Engineer and there are two children — one a pilot. These ladies are members of Santa Barbara 99s and are good buddies in flying the race even though they sweat a little!

CLASSIC 14

Piper PA 28-181 180 hp

Again — we say welcome to newcomers, Elaine and Marolyn — great to have you! Elaine is employed by USAF SAC GRIFFISS AFB — manages the AERO Club. With 10,125 hours Commercial, Instrument, Flight Instructor Airplane, Advanced/Instrument Ground Instructor. Charles, her husband, is retired from USAF — builds and flies experimental aircraft. They have three children (one a pilot) and six grandchildren. Thanks for comment, "sharing experiences with a special group of people."

Marolyn's 80-year-old father (flying 58 years with current medical) gave Elaine a job as Flight Instructor in 1945 — Marolyn was taught by Elaine ... so now they team up to fly the Classic. Marolyn has two daughters in college, is co-owner and manager of retail Dairy Bar & Bakery, also a certified aerobics teacher ... 195 hours shows in her log book — with single land/sea. This team belongs to the Central New York 99s.

Phoenix Inn,
your headquarters
hotel, welcomes the



Women's Air Race Classic
to Greenville, S.C.



246 North Pleasantburg Drive
Greenville, South Carolina 29607 • 803-233-4651
Outside S.C. Call 1-800-25-RELAX!



Arkansas City, Kansas
Offers You
A Warm Welcome
Congratulations
On Your
Air Race Classic Ltd.



KATHY WALTON
Clearlake, CA

JOYCE WELLS
Larkspur, CA

CLASSIC 15
Cessna 182Q 230 hp

Sponsored by:
fabric 'n things
(fabric, notions, sewing machines)
Clearlake, California

... the eleventh for Joyce — your support is sincerely appreciated. Joyce has added skydiving in the past year — one jump — great! A school nurse-health education for twelve years at the Reed Union School District and, of course, household executive. She and pilot husband, Hal, self employed — manufacturers representative — are proud parents of four children and seven grandchildren. She is currently International Membership Benefits Chairman and member of Bay Cities 99s — with 2030 hours, Commercial and Instrument. Says Joyce, "I race to increase my proficiency as a pilot and widen my knowledge of the U.S. and it's people."

Kathy makes this her third Classic as a teammate with Joyce. She owns a "fabric 'n things" store and teaches Home Economics in Konocti Unified School District. Kathy's log book says 340 hours — a member of Bay Cities 99s — races for strengthening old and developing new skills. Rich, her husband and pilot, cheers her on!



MARY RAWLINGS
Woodland Hills, CA

CLASSIC 16
Piper PA28 161 160 hp

Sponsored by:
The Escrow Office Inc.
(Escrow)
Woodland Hills, California

Mary, President/Owner of the Escrow Office Inc. — has in the 32 years enjoyed many achievements in the Escrow industry. A total of 1350 hours and Instrument, Mary has flown two Classics and is a member of San Fernando Valley 99s. Her three children and two grandchildren understand her sayings, "thrills and chills — sharpen skills — see the country — enjoy pilot friends".

A Great Big Thank You to



H. GLENN BUFFINGTON
Author, Air Race Classic Reflections

The ESCROW OFFICE Inc.

(818) 888-5360

MARY RAWLINGS, CSEO
President

21228 Ventura Boulevard
Woodland Hills, CA 91364

Post Office Box 766
Woodland Hills, CA 91365

WE ARE GRATEFUL TO:

Rhoades Aviation
Hangar 5 Restaurant
Sky Valley Resort
Teledyne Battery Products
Aeroprint
Ingram Aviation
Gott Corporation
Ark City Packing Company/Rodeo Meats



RUBY SHELDON
Phoenix, AZ

MARGE THAYER
Mesa, AZ



JANET MORRISON
Williamsburg, MI

JOAN McCOMBS
Lowell, MI

CLASSIC 17

Cessna R-182 235 hp

Sponsored by:
Ronald V. Thayer
(complete Property Management Services)
Mesa, Arizona

Her second Classic, with Commercial, 1900 hours, single/multi land, single sea and Instrument — Marge is a corporate pilot for Val Vista Management Corporation. Husband, Ronald, a pilot, is self employed . . . they enjoy deep sea fishing at the southern tip of Baja — are active members of the Desert Sportsman Pilots Association. They have one child and Marge is a member of Arizona Sundance 99s.

Who wouldn't enjoy interesting Ruby — having flown extensively throughout North America from the Arctic to the Canal Zone in a variety of military and civilian aircraft, being a sensing pilot and technician for U.S. Geological Survey. The Phoenix 99s proudly claims her . . . with 12,000 hours, Ruby has Commercial, single/multi land, single sea, Flight Instructor Airplane/Instrument and Helicopter Flight Instructor Instrument and is employed by SKIBITZKE Engineers & Associates, Inc. This makes the third for Ruby.

CLASSIC 18

Cessna 172M 150 hp

Sponsored by:
Morrison Orchards
(fruit — apples and cherries)
Williamsburg, Michigan

The twins are "teaming" again! Joan with 4000 hours — Commercial single/multi land, single sea, Flight Instructor Airplane/Instrument and Basic Ground Instructor — makes this her fourth Classic. She teaches flying for Grand Rapids School of Bible and Music in the "Missionary Aviation" department. Clair, her husband and pilot, is Director of Aviation and of their six children, four are pilots, and there are eleven grandchildren.

Janet is employed by Morrison Orchards, apple and cherry processing — Quality Control. Bible studies, golfing, swimming, sewing and flying — five children (four pilots) and eight grandchildren keep her busy. A pilot, Peter, her husband is a farmer and storage tank owner. Janet has logged 300 hours and flown two Classics . . . this team belongs to Lake Michigan 99s.

**LESLEY CONSTRUCTION
COMPANY, INC.**

GENERAL CONTRACTOR

**P. O. Box 461
Hwy. 123
Easley, South Carolina 29641**

(803) 859-5121



Golden Pacific Airlines

and

KINGMAN AVIATION

WELCOME

**The 11th Annual
Air Race Classic**

TO KINGMAN, ARIZONA
THANKS FOR STOPPING BY

PERFORMANCE WHERE IT COUNTS

4705 A. The Concourse
Kingman, Arizona 86401

Arizona 800-352-3281
Kingman 602-757-3214



MARY ANN NOAH HAMILTON
Shawnee Mission, KS



BEV MITCHELL
Grand Blanc, MI



MARGARET RINGENBERG
Grabill, IN

JANET YODER
Wichita, KS

CLASSIC 19
Piper PA 24C 260 hp

For most of us, age is enough! Old and new friends/ challenge/incentive to maintain proficiency, these are reasons Mary Ann is flying her ninth Classic — with 6000 hours, Commercial, single/multi land, Instrument, and Private Helicopter — she is "still a homemaker". With three children (one a pilot) and six grandchildren rooting her on . . . she recalls June in Walla Walla when the Air Race Classic contestants bought up all the warm up suits — brrr! A Kansas City 99 — her recent big thrill was flying and landing a Boeing 727 . . . (even though it was a simulator).

Bev joins us this year with 650 hours — works marketing cellular phones, has one child and is a member of the Michigan 99s. Racing for the challenge — she also enjoys skiing, bridge and tennis.

CLASSIC 20
Piper PA 28 160 hp

At 65, Margaret plans to finance her eleventh Classic with her social security check . . . with her "Reno" and senior citizen discounts — she should come out ahead! 35,000 hours — Commercial, single/multi land and Flight Instructor Airplane/Instrument. Morris, banker husband, and Margaret brag on two children, one a pilot, and five grandchildren. A self employed pilot, former WASP, member Indiana 99s — likes that racing, flying and more racing!

Janet, from the Kansas Chapter 99s — works for Associates of Ophthalmic Anesthesia as a Certified Registered Nurse Anesthetist, specializing in Ophthalmic (eyes) Anesthesia. Janet loves the challenge of competition and joy of flying . . . this makes her sixth Classic. With Commercial, single/multi land and Instrument, Janet adds to her 1002 hours. Her husband, Donald, a Podiatrist, pilot and farmer, enjoys flying antique airplanes.

WE ARE GRATEFUL TO:

Colombo Construction Co., Inc.
Community Construction, Inc.
Achsa Donnels
Douglass Truck Bodies, Inc.
Alfred F. Eaton, Jr.
Genway Enterprises
Granite Construction Co.
Judith Faulstick CPA
Freymiller Trucking Co., Inc.
KHG Aviation, Inc.
Rio Bravo Resort
4-WYFF-TV

**SINCERE THANKS TO
NINETY NINE CHAPTERS**

Eastern Pennsylvania
Chicago Area
Dallas Redbird

In Appreciation to:

Janice Hoffman
Elinor Johnson
Dorothy Niekamp
Karlene Pettit
Bebe Sedlacek
Shirley Tanner
Shirley Zillig
Broneta Evans
Douglas A. Smith



SUZY HENNEY
Pacific Palisades, CA

JO ANN HANKIN
Calabassas, CA

CLASSIC 21
Piper PA 28-236 235 hp

... thanks, Suzy, for the kind words that such good pilots fly the Classic — we think so! Suzy, with 500 hours and one prior Classic, is Instrument rated and is employed by UCLA as Development Director, Associate Graduate School of Management. Suzy has two children, a member of San Fernando Valley 99s, and races "to heighten my awareness of the skills of piloting and sharpen them as finely as possible."

Jo Ann — with Commercial, single/multi land and Instrument has 515 hours. Jo Ann is Assistant Vice-Chancellor at UCLA — Finance and Administration. Welcome to your first Classic, Jo Ann, and we hope before terminus in Greenville, you will be planning on 1988.



ESTHER LOWRY
Dillard, GA



SUE GRAY
Corpus Christi, TX

CLASSIC 22
Cessna R-182 235 hp

Esther joins us for her ninth Classic. She has 5400 hours, Commercial, Instrument, Flight Instructor Airplane. Changing occupations from Innkeeper to Investments to world traveler ... she is from the Deep South 99s. Husband, Carl is retired from Campbell Soup Company (a Seeds Specialist) ... they have five children and six grandchildren ... and on the go constantly.

Her co-pilot, Sue, demonstrates her efficiency by last year making sure 33 of the 34 pilots had their pilot information packets ... Sue left theirs at home! She's Chairman of the Tip of Texas 99s, has 170 hours, and is SINGLE. She owns and operates the two oldest saloons and Bar-B-Que Restaurants in Corpus Christi. She races her fourth Classic for the fun and adventure ... snow skiing, skating, and working puzzles for relaxation ... but not while racing!

SPECIAL THANKS TO:

Midland Ross Corporation
Sebly Franks
Jeppesen-Sanderson
Bishop Aviation, Inc.

IN GRATITUDE:

Hal and June Aaron
Charles and Patricia Anspach
Bakersfield Aviation Services
Tom and Bev Banks
BFGC, Inc.
Paul Boles



MARTIE PEARCE
Tempe, AZ

CLASSIC 23
Cessna 172N 160 hp

Sponsored by:
Lycon, Inc.
(engine overhaul)
Falcon Field
Mesa, Arizona

Martie a Flight/Ground Instructor and teacher at Arizona State University has 4300 hours, Commercial, single/multi land, single sea, Flight Instructor Airplane/Instrument and Glider, Advanced/Instrument Ground Instructor. A member of Phoenix 99s, her eighth Classic coming up . . . enjoys reading and soaring — races to improve proficiency . . . Martie, just how proficient do you need to be!

Thank you —
Marian Banks
Aircraft Technical Publishers



MARE CREASON
Grand Haven, MI

CLASSIC 24
Grumman AA5B 180 hp

Sponsored by:
Howmet Turbine Components Corporation
(manufacturer of jet engine components)
Greenwich, Connecticut

"Mare" is Administrator, Safety and Service Division, Bureau of Aeronautics, Michigan Department of Transportation and reserve pilot for the Air Transport Division. With 8500 hours, Airline Transport, single/multi land, single sea, Flight Instructor Airplane/Instrument and Ground Instructor Advanced/Instrument. She races for challenge, recurrent training and to learn more of the U S (not to mention fun). Pilot husband, William, is a dentist and the huge cheering group includes four children, three of whom Mary taught to fly and two grandchildren — Mary hails from Lake Michigan 99s and has flown three Classics.

WESTERN SKIES

US HWY. 54 & BUS. HWY. 87
DALHART, TX

Motel & Restaurant

Restaurant
Banquet Room
24-Hr. Direct Telephone
Swimming Pool
Color TV
Credit Cards Accepted



FREE BREAKFAST COUPON

806-249-4538

Welcome

AIR RACE CLASSIC



INGRAM FLYING SERVICE

Dalhart, Texas

100 Oct. & Jet Fuel
Maintenance
Restaurant

806-249-5521





MARIE HOEFER
Mission Viejo, CA

SHARON CRAWFORD
Redondo Beach, CA



MAYBELLE FLETCHER
Houston, TX

KITTY HAVENS
Friendswood, TX

CLASSIC 25
Cessna 177B 180 hp

Sponsored by:
Micrologic Loran
(Lorans)
Chatsworth, California
Crawford Aviation
(airplane performance books and software)
Torrance, California

A part-time Flight Instructor Airplane/Instrument — 1450 hours — Sharon is full-time high school math teacher at Torrance Unified Schools. Husband Don (pilot) is an Aeronautical Engineer and there are two children. Don't get too involved in reading mysteries on this, your sixth Classic, Sharon. Long Beach 99s claims this team!

In her 28 years experience as a housewife and part-time work for the music director at Mission Viejo High School. Marie enjoys languages — have you conquered German and Hebrew? Husband, Rick, is a DC-10 Captain on United — they are involved in American Field Service and expecting their fourth student soon. One of their four children is a pilot. With Commercial, 900 hours and three Classics . . . racing fine tunes her flying.

SPECIAL THANKS TO

FAA Control Towers
National Weather Service
Flight Service Stations
Federal Communications Commission



GENE T. FITZPATRICK
Public Relations

CLASSIC 26
Grumman AA5B 180 hp

Sponsored by:
Fletcher Aviation Inc.
(FBO on Hobby Airport)
Houston, Texas

Maybelle and Larry, pilot husband, operate their FBO business on "busy" Hobby Airport — their family consists of three children, one a pilot, and four grandchildren. More than 10,000 hours — Commercial, single/multi land, single sea, and Flight Instructor Airplane/Instrument . . . Classic three for Maybelle who races for fun and publicity for the business.

Makes number two for Kitty . . . with 313 hours logged. Still an interesting occupation — training Astronauts at NASA where husband, Mike Lounge, is an Astronaut — they have two children. Space City 99s claims this team!

Golden Torch, Ltd.
Jewelers

Custom Jewelry Manufacturing
Diamond Sales
Jewelry Repair

500 East Park Avenue at Stone
Greenville, South Carolina 29602

235-5858



JOY LA CAILLE
Stone Mountain, GA

NANCY TOON
Atlanta, GA



SAMMY MCKAY
Grand Blanc, MI

JUNE BEERS
Rochester, MI

CLASSIC 27
Beechcraft Dutchess 360 hp

This team hails from North Georgia 99s — welcome Nancy and Joy to your first Air Race Classic. Quality Aviation at PDK Airport employs Nancy as an Instructor . . . with 1140 hours, Commercial, single/multi land, Flight Instructor Airplane and Basic Ground Instructor — am sure you will have some humorous experiences to report come July 2nd. In 1985, Nancy finished 18th of 68 in the New York-Paris air rally. Her music interest is the guitar and piano, then add architecture and Interior Design having co-authored a book in architecture of a well-known Atlanta designer. Nancy and husband, Ralph, who is in construction and land developing have three children — they have raced sailboats from dinghys to ocean racers.

"This is my first — am eagerly anticipating the challenge of being the best pilot by using all the skills that has taken me years to learn" — Joy is employed by National International Aviation Consultants . . . has 5650 hours, Airline Transport, single/multi land, single sea, Flight Instructor Airplane/Instrument and Jet type-rated N-265. A day for Joy may consist of any of the following: flight instruction, air taxi pilot, assistant air traffic controller, FAA flight inspection, system pilot, aviation safety inspector, and aviation consultant. Husband, George, is an Aviation Consultant and they have three children and one grandchild.



CLASSIC 28
Cessna 210J 285 hp

Sponsored by:
"Dear Ole Dad"
(auto dealer, retired)
Flint, Michigan

Sammy, a housewife, property manager, jack of all trades, master of none but a darn good racer pilot. This year, her eleventh Classic, she is going to correct mistakes made last year . . . hoping not to add too many new ones to be corrected next year. Her husband, George, and Sammy have one child and two grandchildren . . . with 4200 hours, Commercial and a member of Michigan Chapter 99s.

June makes this her fifth Classic — is Human Resources Administrator, General Dynamics-Land Systems Division and part-time Flight Instructor . . . 2200 hours, Airline Transport, single/multi land, single sea, Flight Instructor Airplane/Instrument and Ground Instructor Advanced/Instrument. Robert, her husband, is Vice President, manufacturing for Fruehauf Corporation. June races for fun, proficiency, experience and is a member of Greater Detroit Area 99s.

IN GRATITUDE:

Puritan-Bennet Aero Systems, Company
Tailwinds
Aviation Promotions, Inc.
Flight Suits, Ltd.
W. F. Halstead Construction Co.
Precise Flight, Inc.
Strother Field
Artex
Four Corners Aviation
Morgan Stanford Aviation
Lookin' Good All Over



PAULINE GLASSON
Corpus Christi, TX

DONNA GOLDEN
Corpus Christi, TX



AILEEN PICKERING
Studio City, CA

NORMA FUTTERMAN
Beverly Hills, CA

CLASSIC 29
Cessna 172N 160 hp

Pauline Glasson — words can't describe! Commercial, single/multi land, single sea, Flight Instructor Airplane/Instrument, Private Glider, Ground Instructor Advanced/Instrument and 38,000 hours . . . her students say she races to give them a two-week "study" break! She is self employed as Flight Instructor, husband Claude is retired pilot. Her children include each and every student she has ever taught. She has flown all Classics and is anchor of the Tip of Texas 99s. We hope Pauline has learned not to use hotel towels for drying her undies!

Donna and husband, Jerry (a pilot), own and operate Golden Banner Press. They have two children. Donna has 210 hours and flown one Classic . . . Donna and Bette, right hand man, see a great increase in grey hair at Air Race Classic program time each year! All their patience is surely appreciated.

CLASSIC 30
Beechcraft A36 Bonanza 285 hp

Sight seeing and friends gives Norma her excuse for flying her eleventh Classic — we're happy you have an excuse . . . don't you think you should add a bit of golfing? Almost 3000 hours, Commercial, single/multi land, single sea, Instrument, Glider and Basic Ground Instructor. Her husband Charles, a retired Supermarket Operator, and Norma have two children — one a pilot.

Aileen with 2200 hours, Commercial, single land/sea is a realtor with King Realty, Sherman Oaks, CA. There is one child and three grandchildren — her ninth Classic . . . enjoys seeing the country, the competition of racing and I bet a bit of golfing. This fun team hails from Los Angeles 99s.



SINCERE THANKS:

Steve and Beverly Haberfelde
John and Charline Mackessy
Mel and Suzanne McGowan
Rodney and Lily Nahama
Michel's Art/Office Supplies and Custom Framing
Ernie and Carolyn Oldham
Paper Trend
William and Joan Paynter
Roger Penske Cadillac
Donald Pipkin
Friends of Don Rogers
Jack and Elizabeth Saba
Joe and Mary K. Shell
Kenny and Jean Thayer
Three-Way Chevrolet Co.
Turman Construction Co., Inc.
William and Florence Wheeler
Loren and Naomi Wiltmer

Special Thanks To:

Richard Snyder
John Ferguson
Greenville Visitor & Convention Bureau
Greenville Chamber of Commerce



DORIS MINTER
Santa Monica, CA

EMMA McGUIRE
Santa Monica, CA



LORRIE A. GROCE
Greer, SC

MERRY ROBERTSON
Greenville, SC

CLASSIC 31
Cessna 182P 230 hp

Sponsored by:
Fireside Market
(food market)
Santa Monica, California

Flying activities, challenge of good navigation, meeting old friends and new brings Emma to her seventh Classic. Secretary/bookkeeper for Fireside Market and Flight Instructor the past twelve years at Santa Monica airport . . . with 8300 hours, Commercial, Instrument, single/multi land, single sea, Glider and Flight Instructor Airplane. One of her three children is a pilot as is two of the fifteen grandchildren. Emma and Doris are members of Santa Monica Bay 99s.

Now we have Doris flying her sixth Classic — her husband Judge Rex Minter (a pilot) of Santa Monica Municipal Court . . . one of their three children is a pilot as is one of their four grandchildren. Doris with Commercial and Instrument has 2025 hours and is currently enrolled at West Los Angeles College working toward her A & P mechanic license. She is a registrar at Olympic High School — a continuation school helping children with problems. What a cheering section this team has!

THANKS TO

Cothran, Sims, Barker, Inc.
North Star Avionics
Ashmore Bros. Inc.
Messer Mirror
Ellenberg Tech. Sales

SINCERE THANKS TO:

Redwood Empire Ice Arena
Greenville Aviation Flight School
The Union Democrat
Carolyn's Flight Academy
Lemucchi's Tam O' Shanter
Heritage Regency Court Inn
Lesley Construction Company, Inc.
Fallbrook Real Estate Co.

CLASSIC 32
Grumman AA5B 180hp

With a Graduate Realtor Institute designation and active member of the million dollar club (having sold over a million dollars each year) is employed by Cothran, Sims, Barker, Inc. Lorrie is flying her first Classic. Has added that Instrument to her private with 1200 hours, she sometimes convinces her customers by flying them over the prospective site. Volunteering as a tour guide around Greenville South (TAGS), Lorrie is also a frustrated artist . . . here's to good listening on your return from your five children and three grandchildren.

My regret is not having a recording of controller at Standiford Field guiding you to Bowman then the two fuel trucks fueling at the same time . . . even seconds are precious . . . a miracle that you made top ten — we're happy to have you again, Merry. With 975 hours an Instrument attached to Private and fifth Classic coming up, after 17 years as a court reporter — Merry and husband William, attorney and pilot, operate a mom and pop legal office . . . there are four children. Foothills 99s claims this team. "My favorite people in the world race" quotes Merry — Thanks!



Hi: They made 10th place with a few seconds to spare!



PAULINE MALLARY
Fairburn, GA

CLASSIC 33
Beechcraft C23 Custom 180 hp

Pauline says "racing beats doing dishes"! Truth ladies??? Six former Classics helped to make up the 3850 hours — Commercial, single land/sea, Instrument and Flight Instructor Airplane. Pauline is a member of North Georgia 99s . . . she and husband Pete, a 757 Captain on Eastern Airlines, have one daughter.



PAT MORELAND
Mesa, AZ

JANNA SHEA
Chandler, AZ

CLASSIC 34
Cessna 172N 160 hp

Sponsored by:
Garrett Corporation
(aerospace manufacturer)
Phoenix, Arizona
Brackett Aircraft
(aircraft filters)
Kingman, Arizona

Lycon Engine Company
(aircraft engine overhaul)
Mesa, Arizona

Arizona Aircraft Interior Design
Mesa, Arizona

Saguaro Aviation
(engine overhaul)
Phoenix, Arizona

Carroll and Associates, Inc.
(Insurance)
Tempe, Arizona

Sawyer Aviation
(FBO)
Phoenix, Arizona

Universal Weather Service
Los Angeles, California

*Now is the time to buy a New Maule
Write or call for full details.*

MAULE AIR, INC.



Route 5, Box 319
Moultrie, GA 31768

912-985-2045/6525

We welcome this team to their first Air Race Classic! Accomplishment, success, achievement "and it's in my blood" says Pat. A member of the ambitious Arizona Sundance 99s — Pat has three children, one son a pilot, and nine grandchildren. She is employed by Motorola Inc. as a Program/Analyst . . . her log book shows 1079 hours.

Janna, employed by Garrett Turbine Engine, as a Corporate Pilot . . . has acquired 4400 hours, with Airline Transport, single/multi land, Flight Instructor Airplane/Instrument, Private Glider and Jet type-rated. Husband, Jim is an Airline Pilot and there are two children (wonder if they will become pilots). Janna is a member of Arizona Sundance 99s — racing is fun, challenging, and exciting!



JUNE McCORMACK
Borrego Springs, CA

CLASSIC 35
Cessna 172N 160 hp

Welcome back, June . . . with 1701 hours, single land/sea and Instrument, June is a retired salvage broker. Husband Jim, retired, shares her flying interest as a pilot himself as do two of their three children. Seven grandchildren keep them busy! Racing for the fun . . . and to fill my trophy case in our new home at Borrego Air Ranch. June hails from the Borrego Springs 99s.



JEAN SLOAN
Lima, OH

DOTTIE ANDERSON
Bluffton, OH

CLASSIC 36
Piper PA 28-181 180 hp

Sponsored by:
Cameron Packing
(custom packaging)
Lima, Ohio
Bluffton Flying Service Inc.
(FBO)
Bluffton, Ohio
Sloan Trucking
Lima, Ohio

Dottie will make this her eighth Classic . . . Bluffton Flying Service has enjoyed her as a Flight Instructor since 1948 . . . with 32,000 hours, Commercial, single/multi land, Flight Instructor Airplane/Instrument, and Advanced Ground Instructor. Dottie answers to W80VV — amateur radio.

. . . Air racing for cross country experience so says Joan — very true! Pilot husband, Virgil, is shipping department manager for Ford Motor Company of Lima — two of their four children are pilots. Joan manages Sloan Trucking Company of Lima, Ohio and has managed 125 hours flying . . . this makes her sixth Classic. Dottie and Jean are members of All Ohio 99s.

GO WITH CONFIDENCE

AVEMCO has the *experience* you must have in an aviation insurance company, plus so much more . . .

- **Reliability**
AVEMCO has consistently received the highest "A+" (Superior) rating from Best's.
- **Convenience**
AVEMCO has offices coast to coast. One toll-free call provides you with an accurate, no obligation quote.
- **Value**
Special rate reductions for safety, a convenient time-payment plan, and prompt claims service add up to the best value for your premium dollar.

Whatever your aviation insurance needs, call AVEMCO toll-free *today!*

AVEMCO
INSURANCE COMPANY
1-800-638-8440

SPECIAL THANKS TO:

Center Neon Co. Inc.
Western Skies Motel & Restaurant
Golden Torch, Ltd.
Golden Banner Press, Inc.
Maule Air, Inc.
AVEMCO Insurance Company
Current Aircraft, Inc.
The Airport Cafe - Strother Field

Thank You

JOE HARDEMAN
Graphic Arts Services



VELDA KING MAPELLI
Las Vegas, NV



CAROLE ROSE
Culver City, CA

LORRIE BLECH
Beverly Hills, CA

CLASSIC 37
Piper PA 24-260B 260 hp

Sponsored by:
Mapelli Meat Company
of Las Vegas and Palm Springs
(wholesale meat and food products)
Las Vegas, Nevada

Velda served as our Air Race Classic President from 1977 through 1984 — and each year as corporate pilot adds to 5000 hours with Commercial, single/multi land, Instrument and Helicopter. Eugene and Velda have two children, both pilots, and one grandchild. Flying, of course, is Velda's first love but participates in most sports . . . races to meet new people, see new places, and challenges herself to always do better. Las Vegas Valley 99s claims Velda.



CLASSIC 38
Beechcraft F33A 285 hp

It's seven coming up for Lorrie — an avid air racer Lorrie has 8000 hours, Commercial, single/multi land, single sea, Instrument and Flight Instructor Airplane — she uses the Instructor rating at Danforth Aviation, Santa Monica . . . just wondering if their San Fernando Valley 99s has heard of their one humorous experience in a Classic!

Carole and Steven, director of Culver City Chamber of Commerce, are parents of three children and two grandchildren. Carole makes this her fourth Classic — has 2000 hours — Commercial, single/multi land and also uses the Flight Instructor Airplane/Instrument at Danforth Aviation. Carole is a member of the Flying Samaritans, volunteers who fly and staff clinics in remote regions of Mexico. Very active Clinic Coordinator, flying missions and gives slide presentations/programs to service clubs about the organization — now add amateur radio operator.



"FINE INDUSTRIAL SITES AVAILABLE"

STROTHER FIELD

AIRPORT • INDUSTRIAL PARK

FRED A. TUPPER
MANAGER

Res. Phone 221-1222

316-442-4470
Arkansas City, Arkansas

316-221-9280
Winfield, Kansas



The Airport Cafe

STROTHER FIELD
P. O. Box 1312
Arkansas City, KS 67005

(316) 442-8885

Open from 6 a.m. to 6 p.m.
Breakfast, Lunch & Supper

Current Aircraft, Inc.
P.O. Box 776 Arkansas City, Kansas 67005

THE
Fixed
Based
Operator

STROTHER FIELD



Children's Shop

1101 Baker Street
Bakersfield, CA 93305

322-8587



FRENCH
BASQUE
DINNERS

Wool Growers Restaurant
AND
COCKTAIL LOUNGE

620 E. 19th St.
Bakersfield, California

327-9584

Have a great flight!



We'll leave the
'lights' on for you...

**Center
NEON
Co, Inc.**

430 E. 21st St.
Bakersfield, CA 93305
Phone (805) 327-9696

The Complete Air Service



- FBO
- PASSENGER / FREIGHT CHARTER
- COMPLETE AIRCRAFT SALES

RHOADES AVIATION INC.

COLUMBUS MUNICIPAL AIRPORT • COLUMBUS, IN 47203 • (812) 372-1819

The Board of
Aviation Commissioners
And The Citizens of Columbus
Welcomes
The 1987 "Air Race Classic"
To The Gateway of Columbus



**COLUMBUS MUNICIPAL
AIRPORT**

HANGAR FIVE RESTAURANT

Daily Luncheon Special
Catering By Arrangement



RESTAURANT

Located at
Columbus Municipal Airport
(Terminal Building)
(812) 378-4070



MAINTENANCE

ATP has it all
on microfiche

Give us a call
800 227-4610



Aircraft Technical Publishers
101 South Hill Drive
Brisbane, California 94005
(415) 468-1705 Telex 171048

Jerome C. Draper, Jr., Chairman
Caroline Daniels, President
Norma M. Draper

SAN JOAQUIN ENERGY CONSULTANTS, INC.

Geology - Engineering - Evaluation

James R. Weddle, President
California Reg. Geologist No. 45

1400 Easton Drive, Suite 133
Bakersfield, CA 93309

(805) 395-3029



BEST WISHES, FLIERS!



Eugene F. Cassady & Co.
Certified Public Accountants

Judith L. Faulstick, CPA
PARTNER

5665 California Avenue
Suite 200
Bakersfield, California 93309
(805) 323-9054

Welcome **Air Race Classic** PILOTS

GERALD B. CLIFFORD



GERALD B. CLIFFORD
INSURANCE BROKERS

1831 Truxtun Avenue
Bakersfield, Ca. 93301

Office (805) 327-5174



Joan Paynter
606 Vista Verde Way
Bakersfield, CA 93309
(805) 831-4598

**Best
Wishes**

**Air Race
Classic**

Jim Burke



FORD

RENT-A-CAR

RENT A
NEW CAR
AS LOW AS

\$10

PER
DAY!

19th & Oak St.
328-3681



FRENCH BAKERY, INC.

717 East 21st Street
Bakersfield, California

*Genuine Sour Dough and Sweet Dough
French Bread
Since 1945*

(805) 322-7159

IN APPRECIATION TO:

Phoenix Inn
Arkansas City, Kansas
The Escrow Office, Inc.
Golden Pacific Airlines
Kingman Aviation
Lou Ella's Children's Shop
Columbus Municipal Airport
Wool Growers Restaurant & Cocktail Lounge

IN GRATITUDE:

Sandstone Station
The Wax Shop
San Joaquin Energy Consultants, Inc.
Eugene F. Cassady & Co.
Gerald B. Clifford
Payntaero
Jim Burke Ford
Pyrenees French Bakery, Inc.

Carpet Cave



MODERN DAY CARPET
AT PRE-HISTORIC PRICES

Jean Erassarret
PRESIDENT

2231 Union Avenue

327-9742

Bakersfield, California

Stinson Stationers

Office Supplies - Equipment - Furniture

BEN F. STINSON, III

1108 Baker Street
Bakersfield, California 93305

(805) 323-7611

Since 1906

323-7834

Saba's

MEN'S WEAR

A Tradition of Quality Merchandise

AL, JIM & JACK SABA

915 Baker Street
Bakersfield, California



1002 Wible Road, Suite #F
Bakersfield, CA 93304

805/831-4804

Dona Stolz Faz
Proprietor

Established 1898
Member
American Gem Society



(805) 325-5023

1600 20th Street at Eye
Bakersfield, CA 93301

Paul C. Campbell
Owner



Giumarra
VINEYARDS

THE WINE OF THE YEAR
FOR AVIATION'S
EVENT OF THE YEAR

Vintage-Dated
Premium Wines



JOHN HUSTEAD

HUSTEAD DEVELOPMENT

GENERAL BUILDING
CONTRACTOR
LICENSE NO. 501210

(805) 822-3636
HC 1 BOX 828
KEENE, CA 93531



Sandstone Station

350 E. Truxton
323-5772

Call In Your Order

Great for —
Breakfast and Lunch

SAVE 25%!



LARRY WOERTZ
Wax Shop Distributor

(805) 831-2455

THIS COUPON ENTITLES BEARER
TO 25% OFF WAX SHOP PRODUCTS

Car, Truck and **Aircraft** Care Products
Home of Super Glaze

AWARDS

FIRST PLACE

Air Race Classic award for Pilot and Co-Pilot and \$5,000.00 cash. Perpetual Trophy donated by Toledo Area Chamber of Commerce.

SECOND PLACE

Air Race Classic award for Pilot and Co-Pilot and \$3,000.00 cash.

THIRD PLACE

Air Race Classic award for Pilot and Co-Pilot and \$2,000.00 in cash.

FOURTH PLACE

Air Race Classic award for Pilot and Co-Pilot and \$1,500.00 in cash.

FIFTH PLACE

Air Race Classic award for Pilot and Co-Pilot and \$950.00 in cash.

SIXTH PLACE

Air Race Classic award for Pilot and Co-Pilot and \$700.00 in cash.

SEVENTH PLACE

Air Race Classic award for Pilot and Co-Pilot and \$600.00 in cash.

EIGHTH PLACE

Air Race Classic award for Pilot and Co-Pilot and \$500.00 in cash.

NINTH PLACE

Air Race Classic award for Pilot and Co-Pilot and \$400.00 in cash.

TENTH PLACE

Air Race Classic award for Pilot and Co-Pilot and \$350.00 in cash.

HIGHEST SCORING CALIFORNIA TEAM (not in top ten): Palomar Chapter Ninety Nines Memorial (Perpetual) Trophy - \$250.00 and a small replica of Trophy.

HIGHEST SCORE FOR FIRST TIME RACER (not ever having used any weather service or consultant): Weather Service for 1988 Air Race Classic (non transferable) by C.L. Chandler, Atlanta, Georgia.

MARY PEARSON AWARD: Highest Scoring Team Flying the Air Race Classic for the First Time.

... — — — ... **SOS AWARD:** to the pilot of the team that places last — Crystal Apple, donated by Esther Lowry.

See You In 1988!
Salinas, California
to
Huntington, West Virginia
June 25-28, 1988

LEG PRIZES

Leg #	From	To	Place	Award	Thanks to:
1	Rio Bravo	Kingman	1	Grimes Strobe Anti-Collision Light	Midland Ross Corporation John F. Ahlborn Grimes Division P.O. Box 247 Urbana, OH 43078
			2	AM/FM Clock Radio	Sebly Franks 514 Beech Street Falmouth, KY 41040
			3	Chartab Novelty Altimeter Wall Clock	Jeppesen-Sanderson Bishop Aviation, Inc. Route 1, Box 446-A Hot Springs, AR 71913
			4	Chartab ELT Battery Flash Light, L-1000	Jeppesen-Sanderson Artex Bob Chambers P. O. Box 170 Canby, OR 97013
2	Kingman	Farmington	1	Altitude Traveler Oxygen (portable)	Puritan-Bennett Aero Systems, Company Burrell C. Johnson 111 Penn Street El Segundo, CA 90245
			2	\$50.00	Four Corners Aviation 1260 West Navajo Farmington, NM 87401
			3	Chartab Blowing in the Wind Windsock	Jeppesen-Sanderson Marion Jayne Tailwinds 1918 West Banbury Road Palatine, IL 60067
			4	"Fly" Sweat Shirt	Aviation Promotions, Inc. Mike Bender P. O. Box 996 New Bern, NC 28560
3	Farmington	Dalhart	1	Leather Flight Jacket	Jeppesen-Sanderson Flight Suits, Ltd. James Wegge 1050-K Pioneer Way El Cajon, CA 92020
			2	\$50.00	W. F. Halstead Construction Co. Drawer 0 Montgomery, Al 205288-1201
			3	Chartab Two "No. 1 for Takeoff" Sweat Shirts	Jeppesen-Sanderson Aviation Promotions, Inc.
			4	Chartab ELT Battery Flash Light, L-1000	Jeppesen-Sanderson Artex
4	Dalhart	Winfield	1	Standby Vacuum System	Precise Flight, Inc. 63120 Powell Butte Road Bend, OR 97701
			2	\$75.00	Strother Field Fred Tupper P. O. Box 747 Winfield, KS 67156
			3	\$25.00 Chartab	Strother Field Jeppesen-Sanderson
			4	ELT Battery Flash Light, L-1000	Artex

5	Winfield	Jonesboro	1	Heat Screen	Morgan Stanford Aviation Jim Allen 1805 J Second Street Berkeley, CA 94710
			2	Soft-Side Flight Case Chartab	Jeppesen-Sanderson Jeppesen-Sanderson
			3	Novelty Altimeter Wall Clock "Remove Before Flight" Night Shirt	Bishop Aviation, Inc. Aviation Promotions, Inc.
			4	ELT Battery Flash Light, L-1000	Artex
6	Jonesboro	Columbus	1	Engraved Identification Bracelet	Rhoades Aviation 4770 Wright Street Columbus Municipal Airport Columbus, IN 47203
			2	Engraved Locket	Hangar 5 Restaurant Cardinal Services, Inc. Columbus Municipal Airport Columbus, IN 47203
			3	Two "33 Greatest Aviation Lies" T-Shirts Chartab	Aviation Promotions, Inc. Jeppesen-Sanderson
			4	Three Chartabs	Jeppesen-Sanderson
7	Columbus	Greenville	1	One Week Condo Lodging for two persons	Sky Valley Resort James Mason Dillard, GA 30537
			2	Aircraft Battery	Teledyne Battery Products Jane Fisher P.O. Box 2150 Redland, CA 92374
			3	Aviation Prints Chartab	Aeroprint Bob Westervelt South Shore Road Spofford, NH 03462 Jeppesen-Sanderson
			4	ELT Battery Flash Light, L-1000	Artex

EXTRAS:

15 gallons of fuel to
first RON at Dalhart

Ingram Aviation
Cecil Ingram
P.O. Box 709
Dalhart, TX 79022

First 12 Pilots to
arrive Strother Field
will receive Gott's Merchandise

Gott Corporation
Winfield, KS 67156

13th to 24th Pilots to
arrive Strother Field will
receive a ham

Ark City Packing Company/
Rodeo Meats
Arkansas City, KS 67005

First team to arrive
Greenville
— A Gift of Beauty —

Lookin' Good All Over
1001 E. Washington Street
Greenville, SC 29601

Donated To ALL Contestants:

Trip Kit for race

Jeppesen-Sanderson
Barbara Taylor
55 Inverness Drive East
Englewood, CO 80112-5498

Map Cases

Bakersfield Chapter 99s
Dorothy Robinson
3200 Estes Way
Bakersfield, CA 93309

WELCOME
AIR RACE CLASSIC

TO

Greenville

AIR RACE CLASSIC WINNERS

1977

Marion Jayne, Nancy Jayne — Joyce Wells — Luana Davis — Norma Futterman, Virginia Showers — Esther Wright, Judy Hall — Pat Jetton, Elnor Johnson — All Sharp — Jean Rose, Janice Free — Pat Gatlin, Pat Friedman — Velda Mapelli, Stephanie Mapelli.

1978

Sophia Payton, Helen Davison — Dot Etheridge, Dot Wilson — Pat Jetton, Elnor Johnson — Helen McGee, Norma Draper — Sammy McKay, Winnie DuPerow — Marion Jayne, Patricia Keefer — Helen Wilke, Kathy Long — Barbara Goetz, Thelma Cull — Joyce Wells, Alma Hinds — Susan Adler, Mary Santosuosso.

1979

Marion Jayne, Nancy Jayne — Margaret Ringenberg, Pat Wilson — Claire Walters, Eleanor Ruby Moore — Virginia Wegener, Lynn Carey — Tanya Cunningham, Caroline Ann Morey — Joan Paynter, Shirley Tanner — Dot Etheridge, Dot Wilson — Joyce Wells, Alma Hinds — Sophia Payton, Helen Davison — Jan Gammell, Ilovene Potter.

1980

Pat Jetton, Elnor Johnson — Sammy McKay, Marian Banks — Dot Etheridge — Marion Jayne, Patricia Keefer — Dottie Anderson, Marilyn Miller — All Sharp, Berni Stevenson — Alma Hinds, Joyce Wells — Suzanne Jablonski, Barbara Persons — Carolyn Pilaar, Gary Wheeler — Sophia Payton, Sherry Harper.

1981

Juanita Blumberg, Bonnie Quenzler — Edna Gardner Whyte, Patricia Hyde — Sammy McKay, Pauline Mallary — Marion Jayne, Nancy Palozola — Dottie Anderson, Marilyn Miller — Pat Jetton, Elnor Johnson — Esther Lowry, Betty Klein — Margaret Ringenberg, Janet Williamson — Sophia Payton, Helen Davison — Barbara Goetz, Thelma Cull.

1982

Maybelle Fletcher, Mary Byers — Martie Pearce — Pauline Glasson, Sue Gray — Margaret Ringenberg, Wilma Ashe — Bonnie Quenzler, Shirley Zillig — Marion P. Jayne, Nancy Palozola — Caroline Pilaar, Caroline Grubbs — Pat Jetton, Elnor Johnson — Susan Maule, Gary Wheeler — Dot Etheridge.

1983

Gini Richardson, Marian Banks — Sharon Crawford, Marie Hofer — Pauline Glasson, Donna Golden — "Tookie" Hensley, Janice Hoffman — June Beers, Nancy Walters — Lynne Kay Ullicki, Jayne Ann Overgard — Fran Bera, Betty Faux — Jean "Sunny" Schiffman, Suzy Henney — Marion Jayne, Jean Speckman — Anna Kate Hipp, Merry Robertson.

1984

Phyllis Baer, Dodie Gann — Jayne Overgard, Lynne Ullicki — Pauline Mallary — Jean Sloan, Dottie Anderson — Marian Banks, Gini Richardson — Pat Fairbanks, "Soph" Payton — Marion P. Jayne — Diane Shaw Schulke, Genie Rae O'Kelley — Stephanie D. Mapelli, Velda King Mapelli — Marie Hofer, Sharon Crawford.

NINTH AIR RACE CLASSIC WINNERS — 1985



Gini Richardson



Caroline Grubbs

Bonnie Gann



June Beers

Sammy McKay



Mary Jo Volk

Rita Buhl



Kathy Walton

Joyce Wells



Sharon Crawford

Genie Merrell



Dot Arnett

Margaret Ringenberg



Jenny Wright

Joan Steinberger



Carolyn Pilaar

Gary Wheeler



Janice Hoffman

"Tookie" Hensley

TENTH AIR RACE CLASSIC WINNERS — 1986



Marion Jayne



Janet Yoder

Margaret Ringenberg



Maybelle Fletcher

Kitty Havens



Esther Lowry

Shirley Winn



Marge Thayer

Ruby Sheldon



Gary Wheeler

Carolyn Pilaar



Gini Richardson



Margaret Callaway

Susan Kennedy



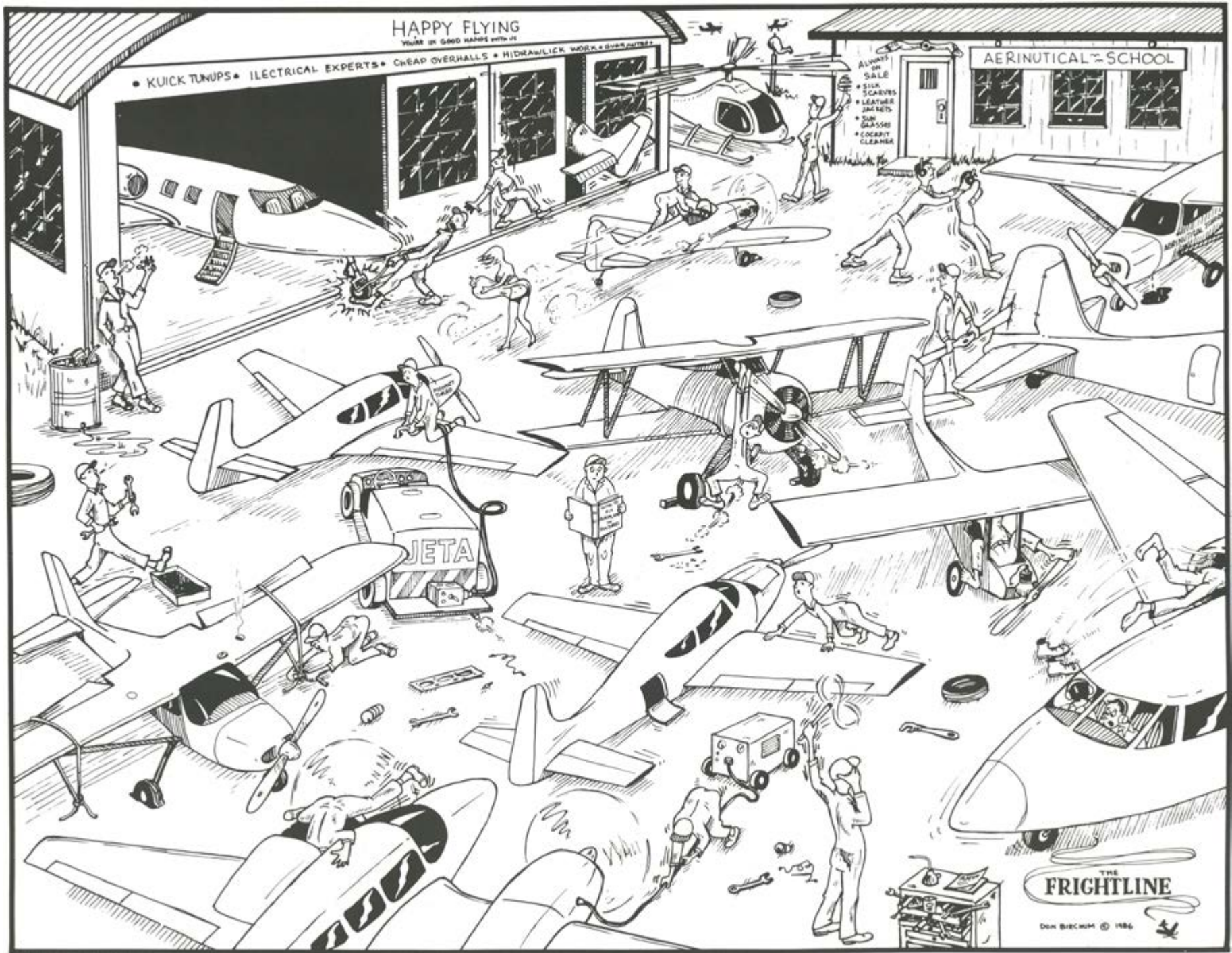
Carole Rose

Lorrie Blech



Rita Buhl

Mary Jo Volk



THE
FRIGHTLINE
 DON BIECHUM © 1986

1977 RACE ROUTE



1978 RACE ROUTE



1979 RACE ROUTE



1980 RACE ROUTE



1981 RACE ROUTE



1982 RACE ROUTE



1983 RACE ROUTE



1984 RACE ROUTE



1985 RACE ROUTE



1986 RACE ROUTE



**Thanks To
The Start and Terminus,
Not Forgetting
The In Between**

1987 RACE ROUTE

