



FROM  
**PASCO AIRPORT**  
**PASCO, WASHINGTON**  
TO  
**GAINESVILLE, GEORGIA**

PASCO'S  
100th  
YEAR



1884 1984  
CENTENNIAL



**JUNE 27 THRU JUNE 30, 1984**  
OFFICIAL PROGRAM \$3.50

## WHY JUST BUY A CONDO WHEN YOU CAN BUY A COUNTRY CLUB. AND MORE.

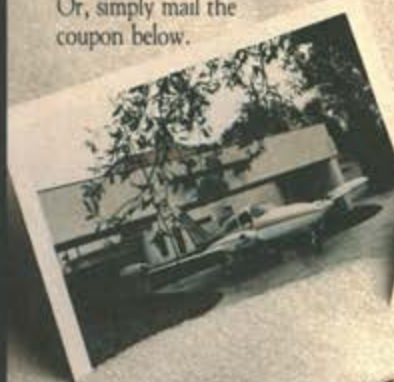
The new Woodside Villas are part of America's newest concept in country club living called Spruce Creek. There's a 6,900-yard championship golf course. A pro shop. A clubhouse. Professional tennis courts. Swimming pools. Boating. Fishing. Even a 4,000-foot paved runway complete with airport, hangar space and tie-down facilities for aviation enthusiasts.

Whether you build your dream home by the taxiway, fairway, by a water overlook or choose one of our luxurious 2 or 3 bedroom Woodside Villas, Spruce Creek puts a country club at your back door.

Just 12 minutes from Daytona Beach, 45 minutes from Orlando, Spruce Creek is the ultimate in luxury living. You'll find uncommon design and the highest quality materials and workmanship.

So, when you buy a condominium, why not get a country club along with it. Call toll-free today: 800-874-7778.

Or, simply mail the coupon below.



I'd like to hear more about the Woodside Villas.

NAME \_\_\_\_\_

ADDRESS \_\_\_\_\_ ZIP \_\_\_\_\_

CITY \_\_\_\_\_

STATE \_\_\_\_\_

TELEPHONE \_\_\_\_\_

SPRUCE CREEK PROPERTIES, INC.  
Route #1  
Daytona Beach, Florida 32014 AC







*A Warm  
Welcome to*

**1984  
AIR RACE CLASSIC  
CONTESTANTS**

# **AIR RACE CLASSIC LTD.**

P. O. BOX 1343  
CRESTED BUTTE, COLORADO 81224

EDITOR ..... PAULINE GLASSON  
ASSISTANT EDITOR ..... BARBARA LEWIS  
PUBLISHER ..... GOLDEN BANNER PRESS, INC.

## **INDEX**

CONTESTANTS (ALPHABETICAL LISTING) .....	3
AIR RACE CLASSIC DIRECTORS .....	4
RACE START .....	6-7
ENROUTE STOPS .....	8-13
RACE TERMINUS .....	14-15
HANDICAPS .....	16-17
DESIGNATED AIRPORTS ON THE ROUTE .....	17
EVENTS .....	17
CONTESTANTS .....	18-34
AWARDS AND LEG PRIZES .....	39-41
1977 THRU 1981 AIR RACE CLASSIC WINNERS .....	45
1982 AIR RACE CLASSIC WINNERS .....	46
1983 AIR RACE CLASSIC WINNERS .....	47

## CONTESTANTS

Classic No.	Name	Page	Classic No.	Name	Page
9	Anderson, Dottie .....	23	4	Mapelli, Stephanie D. ....	19
1	Arnett, Dot .....	18	4	Mapelli, Velda King .....	19
16	Baer, Phyllis .....	26	11	McGuire, Emma .....	24
29	Beers, June .....	33	29	McKay, Sammy .....	33
26	Bell, A. Louise .....	31	30	McKinney, Barbara Ann .....	33
18	Blech, Lorrie .....	27	11	Minter, Doris J. ....	24
3	Bytwerk, Betty .....	19	24	Noah-Hamilton, Mary Ann ..	30
1	Conlin, Elva .....	18	2	O'Kelley, Genie Rae .....	18
15	Converse, Charlene .....	26	7	Overgard, Jayne .....	22
10	Crawford, Sharon .....	23	19	Payton, 'Soph' .....	28
3	Creason, Mary .....	19	14	Pearce, Martie .....	25
33	Cull, Thelma .....	34	25	Peterson, Diana .....	31
15	Edson, Bonnie .....	26	21	Pfisterer, Debi .....	29
30	Etheridge, Dot .....	33	22	Pickering, Aileen .....	29
19	Fairbanks, Pat .....	28	5	Pilaar, Carolyn .....	21
22	Futterman, Norma .....	29	28	Richardson, Gini .....	32
16	Gann, Dodie .....	26	12	Ringenberg, Margaret .....	24
31	Glasson, Pauline .....	34	18	Rose, Carole .....	27
33	Goetz-Sestito, Barbara .....	34	2	Schulke, Diane Shaw .....	18
5	Grubbs, Caroline .....	21	23	Shelton, Ruby .....	30
27	Halstead, Juanita .....	32	21	Simler, Sue .....	29
26	Hensley, Tookie .....	31	9	Sloan, Jean .....	23
6	Hinds, Alma .....	21	24	St. John, Vee .....	30
10	Hoefler, Marie .....	23	8	Sweeney, Lois R. ....	22
17	Jayne, Marion P. ....	27	7	Ulicki, Lynne .....	22
13	Jetton, Pat .....	25	8	van der Linden, Pam .....	22
13	Johnson, Elinor .....	25	6	Wells, Joyce .....	21
25	Kastel, Lynne .....	31	23	Whaley, Trisha .....	30
31	Lewis, Barbara .....	34	14	Whyte, Edna Gardner .....	25
27	Lowry, Esther .....	32	12	Yoder, Janet .....	24
20	Mallary, Pauline .....	28			



# Air Race Classic Ltd.

## ARC Contestants:

The anticipation, planning and excitement of flying the eighth annual Classic becomes reality with the drop of the Starters flag. The altruistic interest and efforts of many people offers ARC contestants a temporary respite from the normal routine--an opportunity to share the camaraderie of participating in an air race.

There are no secrets to racing. Personal application of skills will determine the winner, but each will be a better pilot as a result of the experience.

Thank you for flying the Classic. Represent us well, be gracious to those who have made this event possible.



Fly well and God Bless,  
*Velda King Mapelli*

Velda King Mapelli  
President

## ARC Directors:

Our combined investment of time and money has culminated in the 1984 Classic. Sincere gratitude and fond wishes for the continued effort towards our common interest of co-ordinating the annual ARC.

*Velda*

## DIRECTORS



Helen Wilke  
Treasurer



Pat Jetton  
Vice President



Stephanie D. Mapelli  
Secretary



# “Good work, at reasonable rates, with minimum downtime. That’s why I take my Beechcraft to the Beechcraftsmen.”



“My Beechcraft Bonanza means a great deal to me. I use it a lot for both business and pleasure. So when it needs repairs or maintenance work, I want to make sure it gets fixed right and doesn’t spend any unnecessary time in the shop. That’s why I take it to the Beechcraftsmen.”

When your Beechcraft needs service or maintenance work, bring it to the Beechcraftsmen. You’ll find them at Beechcraft Quality Service Centers all across the United States.

They have all the right equipment, they’re trained, and they know what they’re doing. So they do things right. The first time. And that saves you a lot of time and bother.

The Beechcraftsmen also stock and use Genuine Beechcraft Parts. Parts that are manufactured to the same exacting standards as the originals to ensure reliability.

When you want your Beechcraft repaired right, repaired with minimum downtime, and repaired at a reasonable cost, take it to the people who know it best. The Beechcraftsmen.



**The Beechcraftsmen.**

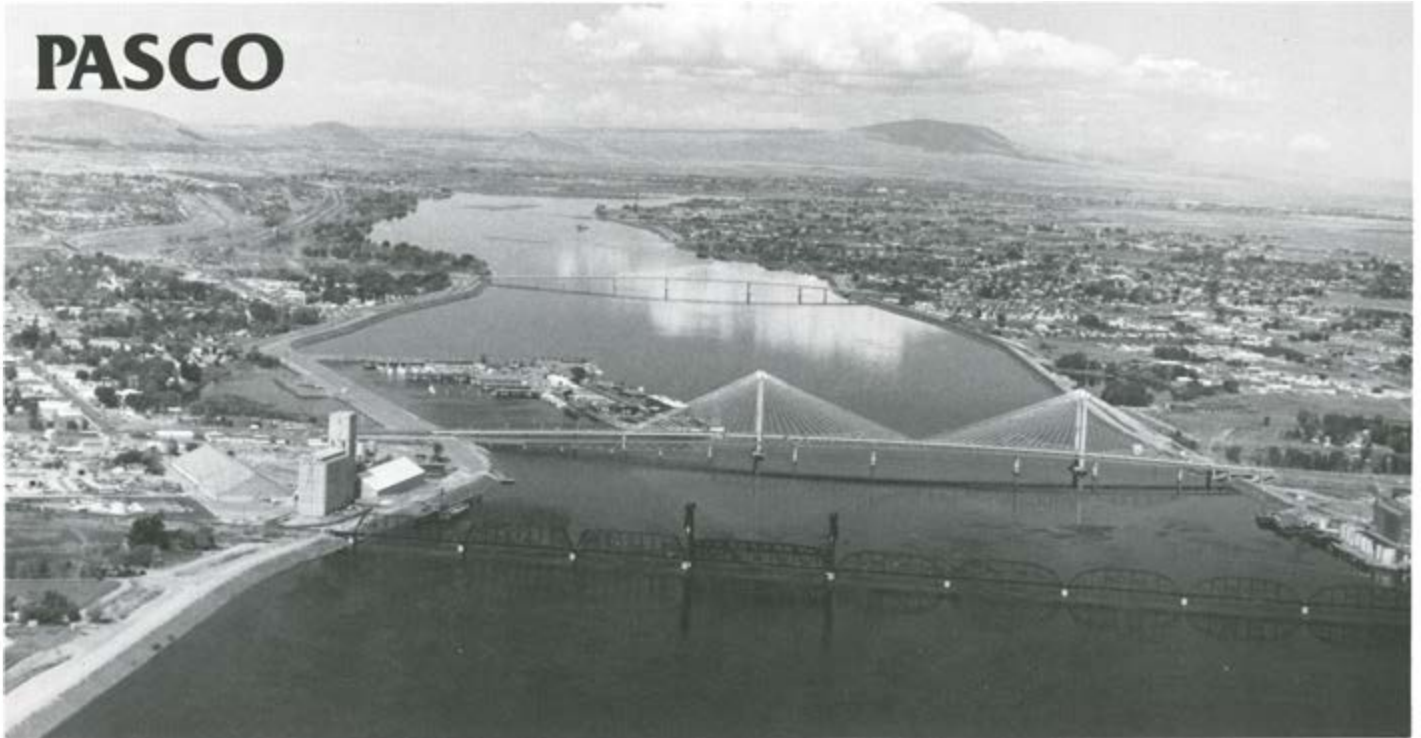
**Only at Beechcraft  
Quality Service  
Centers.**

Member General Aviation  
Manufacturers Association

# Beechcraft

The efficiency of quality

# PASCO



WELCOME TO PASCO, the 228th busiest airport in the world. As you embark on the 1984 Air Race Classic, you will become part of Pasco's rich aviation heritage and you will have played a major role in the celebration of the Pasco Centennial.

The Pasco Airport was the first airport built west of the Mississippi. And from that rough, dirt strip, carved from the sagebrush and sand, emerged the world's largest airline.

On April 6, 1926, Leon Cuddeback departed Pasco in his fragile Swallow bi-plane, en route to Boise and Elko. Flying for Varney Airlines, Cuddeback launched the nation's first scheduled commercial airline flight. And Varney Airlines, merging with several others, became what we now know as United Airlines.

But even before there were airports, there were the dreamers and their airplanes, using just about any open space available to land and take off. In 1912, Charles Zorne of Pasco tried his hand at powered flight. He opened an airplane factory in Pasco, overlooking the majestic Columbia River. But the Era of the Zorne was not to be. Zorne's factory faded into history, leaving little behind save a few photos and newspaper articles of the day.

Pasco owes its present airport to the U.S. Navy. In 1942, Commander B.B. Smith was sent here to establish a primary training base for Navy pilots. The facility later served as an advanced fighter training base and prepared a number of aviators who would later become aces in aerial combat.

Following the war, commercial airline service took over. Pasco is now served by two major air carriers and two regional carriers. The terminal building is about to undergo a major renovation and expansion to accommodate the growth experienced here in recent years.

In hopes of invoking the cooperation of the gods of weather for the ARC Start, we remind you that when Commander Smith established the Naval Air Station at Pasco, his research showed no other Naval Air Stations except those in Florida had better flying weather than Pasco. The weather, too, is part of our aviation heritage.

Our wishes to all of you,

Mike Berriochoa, Chairman  
Carolyn Rose Stella, Co-Chairman



PILOT LEON CUDDEBACH ABOUT TO DEPART ON HIS HISTORY MAKING FLIGHT, INAUGURATING REGULAR AIRMAIL SERVICE BY VARNEY AIRLINES, IN APRIL, 1926.

FIELD LIGHTING EQUIPMENT AT PASCO AIRPORT IN 1926.





Governor John Spellman has proclaimed June 24 - 30  
 "Women in Aviation Week" in Pasco



50 YEARS LATER LEON CUDDEBACH, RETURNS TO PASCO TO COMMEMORATE 50th ANNIVERSARY OF HIS HISTORIC FLIGHT — APRIL 1976.



Pasco Centennial Commission members (front row, left to right) ANNE LYE, ED SHEA, WALTER OBERST. (Back row, left to right) STERL ADAMS and BEVERLY GREEN.



**JIM MORASCH**  
 Airport Manager



**KERMIT BORDEN**  
 Tower Chief



**MIKE BERRIOCHOA and CAROLYN STELLA**  
 ARC Start Chairmen

Not  
 Pictured  
**JEAN DAVIS**  
 Timer  
**MARGIE WALTON**  
 Timer

**LIST OF ACKNOWLEDGEMENTS**

- Bergstrom Aircraft Service
- Red Lion Motor Inn
- McDonalds The Tri-Cities
- The Fireside Inn
- J. D. Hone Chiropractic Clinic
- Roth Distributing Co.
- OXARC
- Duane Einan Funeral Home
- Lewis Street Trailer Sales
- Tri-Cities Savings and Loan
- Riverview Lions Club
- Footprinters
- Tri-Cities RC Modelers
- Boeing Computer Service
- Toby Bouchey
- Shirley Hankins
- Western Airlines
- Port of Pasco
- Chevron USA
- Pasco Centennial Commission
- Neil F. Lampson, Inc.
- John Shumate
- Pontiac-Cadillac-Mazda
- Pavers, Inc.



**ELLEN LARIMER**  
 Judge



**DICK HONE**  
 Judge



**CLAUDIA STEWART**  
 Judge



1984 Honorary Starter

Robert A. "Bob" Hoover is one of America's foremost pilots and flies the F-51 Mustang and the Shrike Commander business and utility aircraft in demonstration of skill and precision at air fairs and shows throughout the world. A graduate of both Air Force and Navy Test Pilot schools, Bob had a combat tour flying Spitfires during World War II. He was awarded the Distinguished Flying Cross, the Soldier's Medal, Air Medal and the Purple Heart. Bob Hoover is honorary starter and guest speaker at banquet.



# TWIN FALLS

Welcome, Air Race Classic, to Idaho's Greater Twin Falls Area. Your stop has brought you to a blend of historic western and contemporary urban communities. While in the area you will enjoy the many scenic attractions. The seasons in the mountains, valleys and plains of the Western Rockies are distinctive, each bringing with it fresh sites and new ranges of activities.

Twin Falls is the "Gateway" to the Tetons and Yellowstone Park and the home of "The Niagara of the West" — Shoshone Falls which are 212 feet high. It serves as the business and cultural center for the Magic Valley and is blessed with a moderate climate

Thanks to Eaton's Photographic Services.

extremely suitable for agriculture.

The opportunities are here. Working, playing or just enjoying life makes living in Twin Falls a pleasure. Our people are socially active and deeply involved in community affairs. You'll find our residents warm and outgoing... People who make friends easily.

There is a "Magic" in Twin Falls and the surrounding area. This magic is in its "People", its "Progress" and its "Unity." Let us share this Twin Falls "Magic" with you.



(Left to Right) ROBERT NEWBRY, Tower Chief, and HARRY MERRICK, Airport Manager.



Tower Personnel: (Front, Left to Right) ROBERT STEWART, MARK LARSEN. (Back, Left to Right) DICK KEEFE, ERIC VON BARGEN.



Idaho gang helping at Twin Falls.



CORY BUCKWAY  
Tower



JACKIE ROHWEDER,  
Chairman,  
LOUISE McBRIDE,  
Co-Chairman  
and DELPHINE ALDECOA,  
Timer



MARY JO HISAW  
Timer

Chamber of Commerce President,  
MIKE DOLTON.



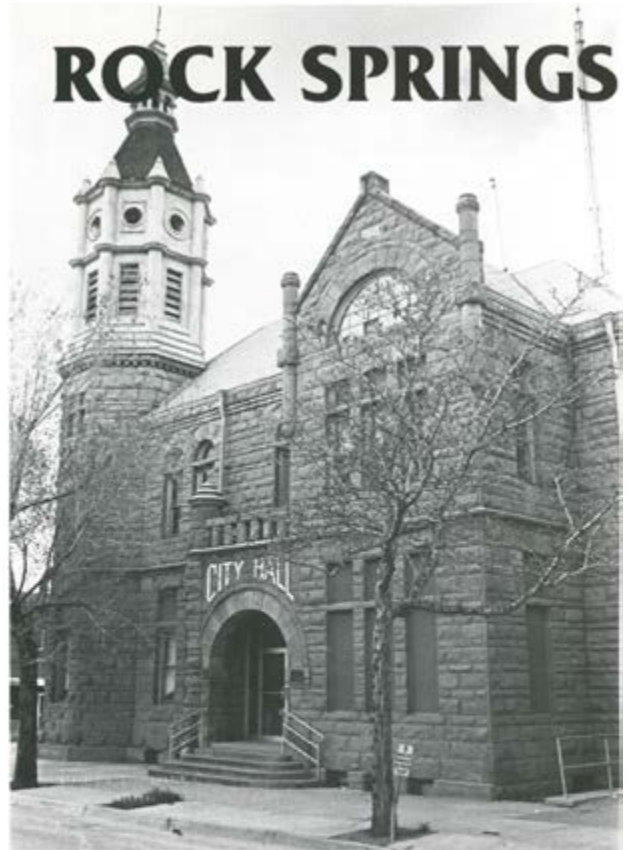


The Rock Springs Sweetwater County Airport is located eight miles of Rock Springs. The nearest large Airport, Salt Lake City, is 140 air miles away, however, Denver, is 220 air miles, is used as a hub for connecting flights.

A new, modern terminal was completed in 1979 and houses the airport administration, snack bar, commercial airlines, and three rent-a-car services. The main runway is lighted and is 10,000 feet, with a cross-wind runway of 5,233 feet. Both have a porous friction surface. Forty eight hangars are available with additional tie-downs. The airport also has a general aviation terminal and an FAA Flight Service Station which provides advisories and weather briefings for local and in transit pilots. One of the most modern instrument landing systems in the state is available with approximately 65 airplanes clearing the airport each day. A fixed base operator provides charter service, maintenance, repair, lessons, and sales with fuel available through the airport authority. Air express, shuttle service, and development space, with runway access are available.

Presently four regional commuter airlines provide 14 flights a day and feed into three major airlines.

# ROCK SPRINGS



Rock Springs-Sweetwater County Airport. Evaluation: 6750



Flight Line Fuel Service personnel: (Front row seated, Left to Right) DAVID KRULJAC, RAY RATHBUN, SUE HOYT, DEB VASE. (Standing, Left to Right) RICH BYRD, JIM JORDAN, TROY VALENTINE, and GARY OSBORN.



Flight Service Specialist  
ROZIE HOTH

Not Pictured  
Timers  
RUTH KENDRICK  
JAN KNOWLES  
J. O. WHITFIELD



Flight Service Station Chief  
JOE KRULJAC



Left to Right  
CAROL WOODCOX  
Co-Chairman  
LINDA ANDERSON  
Chairman.

Not Pictured  
JACK McDONNELL  
Tower Chief  
MARY ANN SMITH  
Assistant

Utah 99's at Rock Springs Stop. (Left to Right) CAROLYN CLARKE, JOAN D'AMICO.





SCOTTS BLUFF NATIONAL MONUMENT

# SCOTTS BLUFF COUNTY

Our area is rich in prehistoric artifacts as well as the American tradition of pioneer days, being on the routes of the Oregon Trail, Mormon Trail and the Pony Express. Scotts Bluff National Monument, a well known landmark for pioneers traveling the Oregon Trail in the early and middle 19th century, lies just west of Gering. The Monument was declared a national monument in 1919 to preserve something of the old trail which so many thousands of pioneers followed westward. The Oregon Trail Museum at the base of the Monument tells a vivid story of the building of the West using paintings, sketches and other effective illustrations. Mitchell Pass, one of the most famous of all gateways of human migration, divides the huge cliffs. Robidoux Pass, an earlier pass for the Oregon Trail, lies south of Gering in the beautiful Wildcat Hills. Trail ruts made by the treks of fur traders, emigrants to the Rocky Mountains and West Coast are still visible in both passes. The Wildcat Hills game preserve spans over 1000 acres of native soil and wooded lands and is home to elk, deer and buffalo.

The area grew with the railroads and irrigation grew in the valley. The raising of sugar beets, corn, potatoes and beans are the chief products of this agriculturally rich valley.

The cities of Scottsbluff-Gering welcome the Air Race Classic of 1984.



WM. B. HEILIG  
BFF Airport Mgr.



WM. PREUIT  
BFF FSS Mgr.

SCOTTS BLUFF COUNTY AIRPORT



Left To Right -  
ANN ROSENBERY - Chief Timer;  
DOT ADCOCK - Timer;  
JUNE ACKLIE - Timer;  
KEETA THOMPSON - Stop Chairman





TERMINAL BUILDING AS SEEN FROM RAMP  
DODGE CITY AIRPORT



"EL CAPITAN"

Historically, Dodge City has been the trade center for business and travel. We have been hosting meetings and visitors since 1872 and we would like to personally invite the Air Race Classic to remain overnight with us.

Dodge City is a thriving city of 20,000 people. We are the home of one of the two largest beef packing plants in the world. An average of 4,000 head of cattle are processed a day. A major farm newspaper that covers a six state region and has a circulation of approximately 60,000 is also located here.

Dodge City offers you a great place to hang your hat plus that western hospitality that will bring you back again and again. We have excellent courtesy and service facilities with over 700 motel rooms, 40 restaurants and watering holes. Dodge City is the perfect stop-over with the charm and excitement of the old west close at hand.

Boot Hill Museum located on Front Street is where the legend of the old west comes to life. The Museum offers an interpretation of Dodge City's development from its earliest beginnings as the wildest town of the western frontier. Other points of interest include the Home of Stone Museum, Carnegie Center for the Arts, Coronado Cross and a larger-than-life bronze statue of a long horn steer called "El Capitan." It marks the end of the 1870's Texas Trail Drives.

The Long Horn Steer Drive held in June and Dodge City Days, which includes a PRCA Rodeo and is held the latter part of July and the first part of August, are two of the biggest events Dodge City has to offer.

So, bring your bed roll, pull on your boots and jeans and RON in Dodge City. We'll do a little pick'n and grinnin, we'll dance the country two-step and the cotton-eyed Joe.

Welcome to Dodge City in 1984!



JERRY DAVIS  
Chief, FSS



JOHN DEARDOFF  
Airport Manager



JIM JOHNSON, Meteorological Technician  
DON GREGG, Chief, Weather Bureau



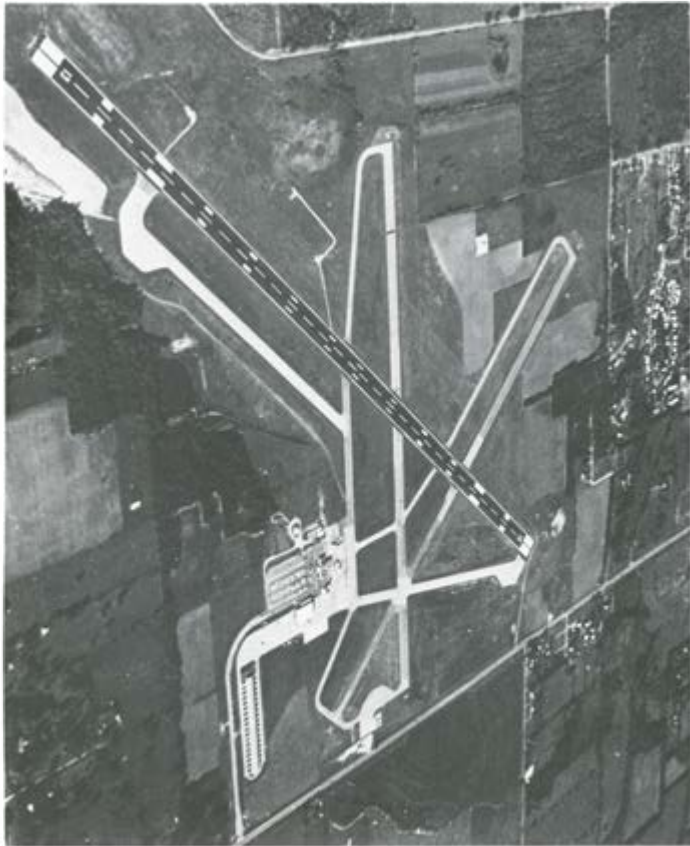
HAROLD OTTAWAY, Pres. Chamber of Commerce  
JOANN BOCK, Stop Chairman



DARLENE BROLLIER  
Chief Timer

Not  
Pictured  
HAROLD REBEIN  
Timer  
MARGIE STAGGS  
Timer





# JOPLIN

In 1838 the Reverend H. G. Joplin settled here and in 1873 the area was legally incorporated. It has progressed from a lead and zinc mining boom area to a clean and friendly gateway to the crossroads of America. Situated near the borders of Oklahoma, Kansas, and Arkansas, it has a population of about 40,000 but a trade area of some 350,000 people.

Joplin has modern convention centers, air service by three carriers, 2 bus lines, over 100 churches, the Tri-State Mineral Museum, Dorothea B. Hoover Historical Museum, and Spiva Art Center on the beautiful Missouri Southern State College campus. Also located here is Ozark Bible College, many public recreational facilities including 5 swimming pools, 20 tennis courts, 23 parks and 1-18 hole golf course.

Additionally, there are 3 private golf courses, unique gift shops, a shopping mall, and discount stores, 19 entertainment spots to suit almost anyone's taste, 100 restaurants, 1500 motel rooms, good highways and close proximity to many lakes, streams and rivers. Joplin is less than 2 hours drive from the famous Silver Dollar City.

Joplin welcomes the 1984 Air Race Classic contestants warmly.



**HAL ARLINT**  
Manager



**JOHN BROWN**  
Mizzou Aviation



**KARL and MAZIE LIPSCOMB**  
Timers



**CLAUDE COPE**  
FSS Chief



**HAROLD KRUEGER**  
Tower Chief



**NANCY TEEL**  
Timer



**JOYCE PITTS**  
Chairman





**PADUCAH CITY HALL & FOUNTAIN**



**CHIEF PADUKE STATUE**

# PADUCAH

Paducah is known for its dynamic community spirit and its friendly people. Paducah is an historic and progressive community, rich in tradition, located at the confluence of the Ohio and Tennessee Rivers. We have excellent schools, an unlimited recreational area, inspirational churches, excellent hotels and motels, fine restaurants and hospitality unlimited.

We are honored by your presence. We hope that you will visit our downtown area which has been transformed into a section of incomparable beauty, graced by decorative lighting, flowers, trees and brick walls where historic preservation and renovation are emphasized.

Paducah is the gateway to Kentucky Lake and Lake Barkley with 222,000 acres of water for swimming, boating, water skiing, fishing or sunning. Whatever you wish, water sports, browsing museums, antique shops, shopping, sites of historical interest, or just enjoying Paducah's uniqueness - we have something for you.

It is the home of the famous Irvin S. Cobb, author, lecturer, actor and humorist, who once said: "It is better to be born a homeless orphan in Paducah than duly certified twins anywhere else on earth."

**ENJOY! AND A WARM WELCOME TO THE AIR RACE CLASSIC.**



**MARKET HOUSE**



Stop Chairman, **DIANE STAFFORD** (Left);  
Timer, **SKIP GUMBERT** (2nd from Right)  
and Kentucky Blue Grass 99s who will be  
doing their bit at Paducah.



**RICHARD ROOF**  
Airport Manager



**DAVID WHATLEY, FSS Chief and  
FRED RAUBACK, Assistant**



**SALLY MOYERS**  
President-Ohio Valley Aviation



**EVELYN BRAESE**  
Timer

# GAINESVILLE

Welcome to Gainesville, the Fun Spot of Georgia. Located in Northeast Georgia on beautiful Lake Sidney Lanier, Gainesville is a great place for exciting water sports, challenging golf and tennis, International Road racing, scenic mountain beauty, romantic southern history and much more.

Located just an hours drive from Atlanta, Gainesville offers a world of fun and beauty. Cast your fishing line for Large-Mouth Bass in the broad blue waters of Georgia's own great Lake Lanier or fish the icy mountain streams for Trout.

Discover another world on Lanier Islands, a 1200 acre family retreat complete with crystal white sand beaches, a giant water-slide, picnic areas, camping and horseback riding.

Tack against the wind under full sail, skipper your own house boat or host a party on a pontoon boat; they're all available for rent.

Tee-up and drive your golf balls year-round on two of the most picturesque and challenging courses in Georgia. The Gary Player designed course winds along the shores of Lanier Islands while mountains make a scenic background for the Chattahoochee course designed by the famous Robert Trent Jones.

Capture all the thrills and excitement of International Road Racing on the 2.52 mile Grand Prix styled course of Road Atlanta.

Travel back in time to the old south, it's history surrounds you in the stately homes and elegant parks of Gainesville's historic Green Street. Whether you're coming for a week or a day, you really shouldn't miss this incredible place.

The City of Gainesville and Hall County are proud to be the Terminus for the 1984 Air Race Classic. Welcome Ladies!



"POULTRY CAPITOL OF THE WORLD "



DOWNTOWN GAINESVILLE



LEE GILMER MEMORIAL AIRPORT AT GAINESVILLE

*Georgia Governor Joe Frank Harris will sign a Proclamation on Wednesday, June 6, 1984 at 10:20 a.m. declaring June 27-July 3 "Women in Air Racing" Week in Georgia*





**ELLIE M. ODORICO**  
Judge



**BONNIE QUENZLER**  
Chief Judge



**GARY WHEELER**  
Judge



**LOUIS WHITE**  
Inpound/Inspection Chairman



**JUDY HALL**  
Director & Score Keeper



**IRENE KRAMER**  
Timer



**NANCY WRENN**  
Timer

Not  
Pictured  
**CAROLYN UPTON**  
Chief Timer



**JAMES A. HARTLEY**  
Mayor



**DWIGHT HUTCHINS**  
Manager  
Convention and Visitors Bureau



**HENRY WARD**  
Hall County Commission  
Chairman



## AIR RACE CLASSIC 1984 Handicaps

MAKE/MODEL	HP	MPH	MAKE/MODEL	HP	MPH
<b>AERO COMMANDER</b>					
200 D	285	185	Cessna 310 Q	520	206
			Cessna 310 R	570	208
			Centurion 210 G-J	285	170
			Centurion 210 F	285	168
			Centurion 210 D & E	285	169
<b>BEECHCRAFT</b>			Cessna 210 B & C	260	165
Duchess 76	360	167	Cessna 205 & A	260	137
Baron C55 - D55	570	212	Super Skylane P-206 B-E	285	144
Baron E55 ('76)	570	212	Super Skywagon U-206	285	147
Baron E55 ('77 -)	570	209	Super Skywagon U-206A	285	144
Baron A55	520	200	Skywagon 185 A-E	260	146
Baron B55 ('76)	520	206	Skylane R182 RG ('78 -)	235	154
Baron B55 ('77 -)	520	201	Skylane 182Q ('81 -)	230	138
Travel Air B95A - E95	360	180	Skylane 182 P & Q (- '80)	230	140
Bonanza P35	260	175	Skylane 182N	230	138
Bonanza S35	285	182	Skylane 182 E-M	230	140
Bonanza V35	285	182	Cessna 180 E-K	230	140
Bonanza V35A	285	180	Cardinal RG 177 ('72 -)	200	150
Bonanza V35B ('70 - '76)	285	180	Cardinal RG 177 ('71)	200	146
Bonanza V35B ('77 -)	285	179	Cardinal 177B ('75 -)	180	130
Bonanza 36 & A 36 ('76)	285	174	Cardinal 177B ('70 - '74)	180	123
Bonanza A36 ('77 -)	285	176	Cardinal 177A	180	120
Bonanza C33A - F33A (- '76)	285	178	Cardinal 177	150	114
Bonanza F33A ('77 -)	285	179	Cutlass 172 RG	180	136
Bonanza E33C	285	178	Skyhawk R 172 XP	195	122
Bonanza G33	260	174	Skyhawk 172 P & Q	160	111
Bonanza B33 - F33	225	165	Skyhawk 172 N	160	113
Sierra A24R	200	140	Skyhawk 172 M ('76)	150	114
Sierra B24R	200	131	Skyhawk 172 I-M ('68 - '75)	150	110
Sierra C24R ('77 - '81)	200	133	(Eligible only with: Propeller		
Sierra C24R ('82 -)	200	137	Model # I C 160/CTM 7553		
Musketeer A23/24	200	128	Part # C 161001 - 0305)		
Sundowner C23 (- '76)	180	108	Skyhawk 172 ('62 - '67)	145	109
Sundowner C23 ('77 -)	180	111			
Musketeer A23 II & III	165	116	<b>GRUMMAN AMERICAN</b>		
Musketeer 23	160	112	Cougar GA-7	320	163
Sport A23-19	150	110	Tiger AA5B	180	140
Sport B19 ('70 -)	150	97	Cheetah AA5A ('76 -)	150	126
			Traveler AA5A (- '75)	150	127
			Traveler AA5 ('72 -'74)	150	120
<b>BELLANCA</b>					
Bellanca 14-19-3A-C	260	178	<b>MAULE</b>		
Super Viking 17-31A (-'77)	300	164	M-4 210C	210	
Super Viking 17 - 31A ('78 -)	300	170	M-4 220C	220	
(Vikings - Lycoming only)			M-5 235C	235	
Decathlon 8KCAB	180	128	M-5 180C	180	
Citabria 7KCAB & 8KCAB	150	117			
Citabria 8GCBC	180	105	<b>MOONEY</b>		
Citabria 7GCBC	150	100	M 201J ('77 -)	200	171
Citabria 7GCAA	150	102	Ranger M20C ('77 - '78)	180	139
			Ranger M20C (- '76)	180	146
<b>CESSNA</b>			Statesman M20G	180	148
Cessna 310 G	520	212	Chaparral M20E	200	160
Cessna 310 H	520	210	Executive M20F	200	155
Cessna 310 I-J	520	208	Master M20D	180	117
Cessna 310 K-P	520	207			



MAKE/MODEL	HP	MPH	MAKE/MODEL	HP	MPH
<b>PIPER</b>					
Seneca PA-34	400	166	Cherokee PA-28-235 B-F	235	136
Twin Comanche PA-30 & PA-39	320	175	Charger & Pathfinder PA-28-235	235	131
Lance PA32 - 300 R & II	300	160	Archer & Challenger PA-28-180	180	118
Cherokee 6 PA-32-300 ('78 -)	300	149	Cherokee PA-28-180 B-G	180	122
Cherokee 6 PA-32-300 (- '77)	300	144	Cherokee PA-28-160C	160	116
Cherokee 6 PA-32-260 ('78)	260	140	Cherokee PA-28-160 - B	160	108
Cherokee 6 PA-32-260 (- '77)	260	136	Cherokee PA-28-150C	150	114
Comanche PA-24-400	400	193	Cherokee PA-28-150 - B	150	106
Comanche PA-24-260, B & C	260	165	Cherokee PA-28-140	140	112
Comanche PA-24-250	250	160			
Comanche PA-24-180	180	137			
Arrow PA-28-200R III	200	141	<b>ROCKWELL COMMANDER</b>		
Arrow PA-28-200R II	200	145	Commander 114	260	161
Arrow PA-28-200R	200	146	Commander 112	200	145
Arrow PA-28-180R	180	140	Commander 112A	200	141
Archer PA-28-181	180	118	Commander 112B	200	143
Warrior PA-28-161 & II	160	115			
Warrior PA-28-151	150	104	<b>WING</b>		
Dakota PA-28-236	235	140	D-1 Derringer	320	178

Cessna 175 C ('62)	175HP	112MPH
Skymaster 336	420	153
337, A & B		170
337, C-F		169
337, G-H		168



## DESIGNATED AIRPORTS ON THE ROUTE

AIRPORTS	STATUTE MILES
PSC Pasco, Tri-Cities, Washington	
TWF Twin Falls-Sun Valley Regional Joslin Field, Twin Falls, Idaho	347.27
RKS Sweetwater County, Rock Springs, Wyoming	284.50
BFF Scotts Bluff County, Scottsbluff, Nebraska (note: the two spellings - they are correct)	282.41
DDC Dodge City Municipal, Dodge City, Kansas	342.58
JLN Joplin Municipal, Joplin, Missouri	302.78
PAH Barkley Regional, Paducah, Kentucky	315.90
GVL Lee Gilmer Memorial, Gainesville, Georgia	338.48
<b>Total Statute Miles</b>	<b>2,213.92</b>

## Events

Impound Opens	June 23, 1984 1300 to 1800 PDT
Aircraft Inspections	June 24, 1984 0900 to 1800 PDT
Aircraft Inspections	June 25, 1984 0900 to 1600 PDT
Take-off Banquet	June 25, 1984 2000 PDT
Pilot Briefing	June 26, 1984 0900 PDT
Take-off	June 27, 1984 0830 PDT
Finish Deadline	June 30, 1984 1700 EDT
Pilot Debriefing	July 2, 1984 0900 EDT
Awards Banquet	July 2, 1984 2000 EDT



**ELVA CONLIN**  
Elizabethtown, KY

**DOT ARNETT**  
Sellersburg, IN



**GENIE RAE O'KELLEY**  
Knoxville, TN



**DIANE SHAW SCHULKE**  
Cape May, NJ

### CLASSIC 1

Piper PA 260 260 hp

*Sponsored by:*  
Haps Aerial Enterprises, Inc.  
FBO & Airport Manager  
Sellersburg, Indiana

Dot vowed last year when she was Stop Chairman for Air Race Classic in Louisville, that '84 was her year — so Dot, make it #1 all the way! Dot is a longtime member of Kentucky Blue Grass 99s with Commercial and Instrument, 1650 hours and experienced the thrills of flying several small races. She is Mortgage Loan Officer for United Bank of Indiana. Ted, Dot's husband, is an educator and pilot.

Racers, remember your leader on donkey in '83 program — that was Dot!

Elva — betcha this race will be a greater thrill than that "one jump" skydiving! Elva with 325 hours and serving as treasurer of Kentucky Blue Grass 99s has been supervisor for White Castle System 21 years — a son in the Marine Corp and one daughter.

Welcome to Air Race Classic, Elva and Dot . . . don't forget to head Southeast from Paducah!



### CLASSIC 2

Piper PA 28-181 180 hp

*Sponsored by:*  
Volunteer Aviation of Knoxville, Inc.  
Alcoa, Tennessee  
Cherokee Aviation, Inc.  
McGhee Tyson Airport  
Alcoa, Tennessee  
Lindsey Ward Electronics  
Knoxville, Tennessee - Richmond, Virginia  
Orange Bowl Restaurant  
Knoxville, Tennessee

Genie Rae is Flight/Ground Instructor for the University of Tennessee and has over 7000 hours with Commercial, single/multi land, Flight Instructor Airplane/Instrument and the three Ground Instructor ratings—personal experiences in racing helps in ground school teaching. She is President and Chief Flight Instructor of Volunteer Aviation of Knoxville, Inc., a member of Tennessee 99s and co-author with William Kershner of "Student Pilot's Study Guide." Research Chemist/pilot husband, two children and two grandchildren want Genie Rae to make her seventh Air Race Classic the winning one!

With 2600 plus hours, Diane with Commercial, single/multi land and Instrument is flying her sixth Classic. Flies for fun — now literally — Diane is enjoying a new home, lotsa' tennis, and a wonderful grandchild. She is a member of the Garden State 99s and pilot/husband, Herb, is pilot for Allegheny Commuter. Herb — chances are your interest in women's air racing will become a priority in June!







MARY CREASON  
Grand Haven, MI



BETTY BYTWERK  
Spring Lake, MI



VELDA KING MAPELLI  
Las Vegas, NV

STEPHANIE D. MAPELLI  
Cathedral City, CA

**CLASSIC 3**

**Grumman American AA5B 180 hp**

*Sponsored by:*  
*Howmet Turbine Components Corporation*  
*Jet Engine/Other Components*  
*Greenwich, Connecticut*  
*Whiteman Mfg. Co.*  
*Welding Gun Mfg.*  
*Muskegon, Michigan*

Mary, with 8200 hours, Airline Transport, single/multi land, single sea, Flight Instructor, Airplane/Instrument and Advanced/Instrument Ground Instructor . . . is assistant Administrator, Safety & Service Division, Michigan Aeronautics Commission. Mary having flown one classic writes she races because of the challenge of competition with the nation's best airplane pilots and racers. She is a member of Lake Michigan 99s — has taught/teaching her four children to fly — save time for the grandchildren! Mary's, dentist husband, to understand family lingo, acquired his license.

Betty started flying at age 16 — acquired Commercial and Flight Instructor at 18 when marriage and three children dominated her life until now. We welcome you to Air Race Classic. Betty's husband, Edward, Manager of Welding Gun Manufacturing Company experienced the thrills of a WWII air force pilot, both are scuba divers and Betty is a free lance writer of boating articles . . . member of Lake Michigan Chapter 99s.

**CLASSIC 4**

**Piper PA 24-260B 260 hp**

*Sponsored by:*  
*Mapelli Meat Company of Las Vegas*  
*(Wholesale Meats)*  
*Las Vegas, Nevada*

Mother/daughter team that love flying — racing together — and still good friends at end of race! Velda has acquired 3500 hours with Commercial, Instrument and single/multi land — and is flying her seventh Classic. Corporate pilot and co-owner of Mapelli Meat Company, she and husband/pilot, Gene, have two children, both pilots, and one grandchild. Velda, a member of Las Vegas Valley 99s, races because of the opportunity to meet new people — go new places — improve aeronautical skills — evaluate weather — and to share the experience with daughter, Stephanie.

Stephanie shares the management of Mapelli Meat Company of Palm Springs with husband/pilot, David Silverman. She has acquired 566 hours and this will be her fourth Classic — enjoys the excitement of racing with her mother. Needless to say, Gene has a double interest in this team!

**Thank You  
Broneta Evans**

• BEEF • LAMB • PORK • VEAL • SEAFOOD • POULTRY •  
 • DELI • CHEESES • PASTRIES •

APPETIZERS • DRESSINGS & OILS



BRAND OF DISTINCTION

STEPHANIE D. MAPELLI  
Vice-President

MAPELLI MEAT COMPANY  
of Palm Springs, Ltd.

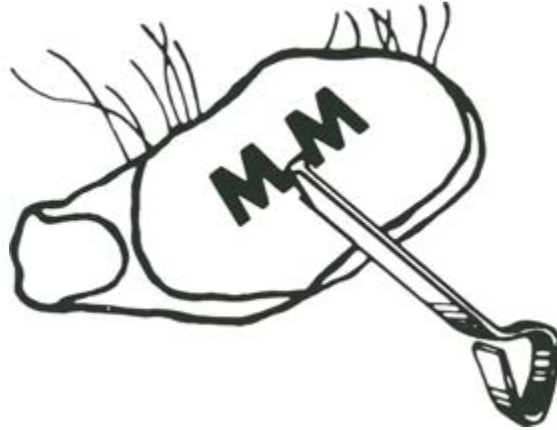
67-625 Highway 111 Telephone  
Palm Springs, Ca 92264 (619) 328-1200

• FROZEN: POTATOES • VEGETABLES • ENTREES • FRUITS •

Best of luck  
to all ARC contestants.  
Mapelli's Laws of Average sez:  
Out of 100 years,  
Velda and Stephanie  
are bound to win one . . . .  
Please let it be this year!!!

*Stephanie*  
*Gene*  
*Velda*  
*Mapelli*

*Since 1977 I have evoked every possible  
Air Race "God" to help my favorite race team  
win the Classic. 1984 ARC contestants fly well,  
because I am going to the top—  
"The God Father"!*



## **MAPELLI MEAT COMPANY, INC.**

3111 So. Valley View Blvd.  
Las Vegas, Nevada 89102  
(702) 876-9000

*DISTRIBUTORS OF:*  
**MONFORT OF COLORADO**  
BEEF AND LAMB  
PRODUCTS

**BRAND OF DISTINCTION**

**EUGENE M. MAPELLI, President**





CAROLYN PILAAR  
Greenville, SC

CAROLINE GRUBBS  
Greer, SC



ALMA HINDS  
Redding, CA

JOYCE WELLS  
Larkspur, CA

**CLASSIC 5**

Piper PA 28-181 180 hp

*Sponsored by:  
Carolyn's Flight Academy  
Greenville, South Carolina*

Carolyn owns Carolyn's Flight Academy and is a member of Foothills 99s. She has acquired 16,000 hours — Airline Transport, single/multi land, single sea, Flight Instructor Airplane/Instrument, Commercial Helicopter and Glider, all Ground Instructor rating's plus Airframe and Power Plant Mechanic License. She flew with the United States Proficiency Flight Team in 1979, 1981, and 1983. Carolyn has flown all the Air Race Classics for fun, proficiency and fellowship — and probably to win!

Caroline has teamed with Carolyn in two prior Classics — but this year their preference is a Piper. She includes in her 800 + hours an Instrument rating, member of Blue Ridge Chapter 99s . . . her husband, Van, a surgeon is also a pilot.

**CLASSIC 6**

Cessna 172N 160 hp

This makes seven Air Race Classics for Alma who enjoys the challenge . . . has acquired 16,500+ hours with Commercial, single/multi land and Instrument. Alma is retired as an FBO owner of 25 years at Benton Airport, Redding — this after a stint as WASP pilot in Ferry Command WWII. With three children, nine grandchildren, Alma still has time for golf, needlework and travel.

Joyce, a member of Bay Cities 99s, is currently serving as Southwest Section Vice Governor. She has flown all the Classics, cheered on by Hal, manufacturers representative/pilot, four children and four grandchildren. With 1780 hours, Commercial and Instrument, Joyce has served as school nurse the past nine years with Reed Union School District. A high ranking household executive, Joyce's hobbies include gardening, square dancing, sewing and loves racing because it is a good way to see USA.

**EXTRA! EXTRA! EXTRA!**

***Special Thanks  
to  
Anna Kate Hipp  
and  
Merry Robertson***





**LYNNE ULICKI**  
Salinas, CA



**JAYNE OVERGARD**  
Seaside, CA



**PAM van der LINDEN**  
Fallbrook, CA



**LOIS R. SWEENEY**  
Redding, CA

**CLASSIC 7**

**Piper PA 28-181 180 hp**

*Sponsored by:  
California International Airshow  
Charitable Organization  
Salinas, California*

Only Air Traffic Controllers could determine the right timing for landing in the middle of Airport Day Celebration! Lynne, former Flight Instructor, has acquired 750 hours, Commercial and Instrument, and finds air traffic controlling more exciting than Flight Service. A member of the Monterey Bay 99s, she has a versatile list of hobbies — animal lover, knitting, snow skiing, and computers.

Jayne, Air Traffic Controller at Monterey Peninsula Airport, has acquired 280+ hours. Piano and dancing have been added to her list of interest — member Monterey Bay 99s — the "racing bug" has definitely taken a bite on this team — Welcome to your second Classic!

**CLASSIC 8**

**Bellanca Viking 17-31A 300 hp**

*Sponsored by:  
Fallbrook Real Estate Co.  
Fallbrook, California*

Pam — flown every Classic — your support and enthusiasm very much appreciated — 3000 hours — Commercial and Instrument. She is owner/broker of Fallbrook Real Estate and husband, Victor, is rancher/pilot. They have three children, all pilots, nine grandchildren, three are pilots, and two great grandchildren. Pam says humorous experience in prior classics too numerous to mention! (Pam — we are with you!) She is a member of the Palomar 99s, National Real Estate Fliers, Baja Bush Pilots, serves on the Aviation Commission Chamber of Commerce and Board of Directors for Fallbrook Community Airpark — plus a ranking tennis player.

Welcome, Lois, to the Air Race Classic! She is employed by Mount Shasta's Sheriff as a law enforcement officer/deputy sheriff. A member of Mount Shasta 99s, Lois enjoys swimming, golf, and cross country skiing.



Didn't he say "Cleared for Fly By"?

To Lucky number drawn  
Savings Bond  
to  
Pilot and Co-Pilot  
*Compliments of*  
Financial Federal Savings and  
Loan Association  
Joplin, MO





JEAN SLOAN  
Lima, OH

DOTTIE ANDERSON  
Bluffton, OH



MARIE HOEFER  
Mission Viejo, CA

SHARON CRAWFORD  
Redondo Beach, CA

### CLASSIC 9

Piper PA 28-181 180 hp

*Sponsored by:*  
Mike Cameron  
Cameron Packing Company  
Lima, Ohio

Very often Dottie can be heard 'signing off' with "W80VV". Amateur Radio enthusiast and member of Ohio 99s, Dottie with Commercial, FAA Examiner, single/multi land, Flight Instructor Airplane/Instruments and Advanced Ground Instructor with 30,000 hours — all this she uses as Instructor at Bluffton Flying Service . . . with her fifth Classic coming up Dottie expects to say hello to many old friends and cope with new experiences.

Jean is bookkeeper in pilot/husband, Virgil's, truck company — they have four children, one is a pilot — Jean is a member of Ohio Chapter 99s — Enjoys bowling and remembers the thrill of her first Classic in 83.

Sincere thanks to  
Ninety Nine Chapters:

Chicago Area  
Indiana Dunes  
Colorado  
Nebraska  
Palomar  
Wyoming  
Utah  
Boise  
Mid Continent  
Cimarron  
Deep South  
Kentucky Blue Grass  
Dallas Redbird  
Northeast Kansas

### CLASSIC 10

Cessna Cardinal 177B 180 hp

*Sponsored by:*  
Lynne Cooter, Lynn's Aircraft Engines  
(Engine Repair and Overhaul)  
Long Beach, California

Don Crawford, Crawford Aviation  
Torrance, California

*"Practical Guide to A/P Performance and Design"*  
Book Sales  
Author, Don Crawford

Sharon has added Flight Instructor/Airplane to her Commercial, Instrument with 790 hours. A high school math teacher with Torrance Unified School District, she spends after school hours and on weekends as a part-time Flight Instructor with Rolling Hills Aviation. Married to Don, also pilot, aeronautical engineer at TRW, part-time professor at UCLA and airplane designer — they have two children. Sharon, a member of Long Beach 99s, flying her third Classic, finds racing a way to stay proficient.

Her second Classic the new duty for Marie — "check-pilot - for - swab - cloth"! Seems she left Sharon draped in wet rags at one stop. Marie is a part-time instrumental music director/assistant at Mission Viejo High School — member of Long Beach 99s — she and husband Rick, Captain with United Air Lines, have four children, one of which is a pilot. Why does she race? — well it sure beats house work!





**EMMA McGUIRE**  
Santa Monica, CA

**DORIS J. MINTER**  
Santa Monica, CA



**MARGARET RINGENBERG**  
Grabill, IN



**JANET YODER**  
Wichita, KS

**CLASSIC 11**

**Cessna 182 P 230 hp**

*Sponsored by:  
Fireside Market  
(food market)  
Santa Monica, California*

"Racing? — love to fly — love the gals — love the excitement" to quote Emma. She has 8000 + hours with Commercial, single/multi land, single sea, Instrument, Flight Instructor/Airplanes and Gliders. Emma was a Flight Instructor at Santa Monica Airport for twelve years. A member of the Santa Monica Bay 99s, she is secretary/bookkeeper for Fireside Market — Three children, one a pilot, and thirteen grandchildren, two are pilots, gives Emma a huge private cheering squad for her sixth Classic — welcome back, Emma!

Doris is registrar at Olympic High School — a continuation school that helps children with problems. At present she is enrolled at West Los Angeles College working toward her A&P mechanic's license — with Commercial and Instrument has acquired over 1650 hours. Married to Rex, a pilot and Judge of Santa Monica Municipal Court, they have three children, son is a pilot and two grandchildren. Doris is flying her fifth Classic. A charter member of Santa Monica 99s.

**CLASSIC 12**

**Cessna R172K (XP) 195 hp**

Margaret has 30,000 + hours, Commercial single/multi land, Flight Instructor Airplane/Instrument, flown all the Classics — member Indiana 99s — WASP — housewife — two children — five grandchildren and husband, Morris, who is a banker. Why race? LOVE IT says Margaret.

Janet with Commercial and Instrument has acquired 550 hours. She is a Certified Registered Nurse Anesthetist, a member of Kansas 99s, and married to Donald, a pilot and Podiatrist. They have two children, pilots and five grandchildren. Janet's interest lies in Antique Airplanes especially Stearman and J-3 Cubs plus skiing — flying her third Classic, races for fun and experience.

**Special Thanks  
to  
Pam van der Linden  
Ways & Means  
Chairman**



**WOMEN FLYERS**

visit

**Cactus Pete's  
&**

**Horseshu  
Resort Casinos**

in

**Jackpot, Nevada**

**Paved and Lighted Runway  
Beacon and VASI**

**Fuel**





**PAT JETTON**  
Crested Butte, CO

**ELINOR JOHNSON**  
Dallas, TX



**EDNA GARDNER WHYTE**  
Roanoke, TX



**MARTIE PEARCE**  
Tempe, AZ

**CLASSIC 13**

**Beech Debonair C33A 285 hp**

*Sponsored by:  
The Pilot Shop  
Pilot Supplies  
Addison (Airport), Texas*

Pat did not forsake all aviation when she hopped to Colorado into the Mini-Storage business — couldn't give up her racing and the Pilot Shop — she has made six Classics, a member of Dallas Redbird 99s — 3000 hours with Commercial single/multi land, Instrument and Flight Instructor Airplane. Two grandchildren and one of her two children is a pilot.

Elinor is a draftsman with Superior Design — she and retired husband, Rowland, a pilot and quite a photographer, have four children — one a pilot — and four grandchildren. Six Classics says Elinor with 1600 hours, Commercial, single/multi land and Instrument . . . Dallas Redbird 99s claim Elinor. This team says they race for fun — winning occasionally.



Look at that! . . . Wings on the bottom.

**CLASSIC 14**

**Piper PA 28-180C 180 hp**

*Sponsored by:  
Jonco Industries, Inc.  
Matrix Aircraft Engine Treatment  
Houston, Texas  
Brackett Aircraft Co.  
Brackett Air Filters  
Falcon & Mesa, Arizona  
Bela's Aircraft  
FAA Certified Repair Station  
Dallas, Texas  
Aero Valley Flight School  
Flight Training  
Roanoke, Texas*

How does anyone as occupied in Aviation as Edna become involved in Real Estate with 31,210 hours — 58 years of flying, license 4013 — member Fort Worth 99s — past president of International 99s — Chief Pilot — built/owns/operates Aero Valley Airport — teaches Aerobatics along with those ordinary maneuvers that all pilots have to learn. . . those certificates include Commercial single/multi land, single sea, Flight Instructor Airplane/Instrument, Helicopter, Glider and Advanced/Instrument Ground Instructor . . . racing means meeting new and seeing again the nice girls/women who fly. Four former Classics have added to the fun and sad incidents of races flown.

Arizona State University is fortunate to have on it's staff, Martie — who is a retired U.S. Navy nurse but not retired from teaching flying and ground school — Commercial, single/multi land, single sea, Flight Instructor Airplane/Instrument, Glider — Advanced/Instrument Ground Instructor . . . 3700 hours. Phoenix Chapter 99s proud to claim Martie. — have fun and improve proficiency: fly — soar — but Martie, how do you have time for reading!

Sincere thanks to:  
**Bernie and Darwin McGowan**  
Aircraft Bluebook  
Oklahoma City, OK



**CHARLENE CONVERSE**  
Kent, WA

**BONNIE EDSON**  
Bellevue, WA

**CLASSIC 15**

**Beech Baron B55 520 hp**

Third Classic for Bonnie with 350 hours single/multi land, single sea and Instrument. Bonnie's husband, J. Orin, boat manufacturer and pilot, convinced her flying was the 'thing' — there are two children. "I initially, raced for experience now for fun and to be with interesting people." Quite a busy gal — member of Seattle 99s, keeps three horses in shape, boats, golfs, sews and skis.

Charlene is a bookkeeper for Hayden Manufacturing — her log book shows 130 hours with single land/sea, and very much into boating. Welcome to our race, Charlene — sure you will enjoy our beautiful country.

Sincere Appreciation to:

Morgan Stanford Aviation  
Berkeley, CA

Thermo King Company  
Commerce City, CO

Midland-Ross Corporation  
(Grimes Division)  
Urbana, OH

Teledyne Battery Products  
Redlands, CA

Goodyear Aero Space Corp.  
Akron, OH

Puritan - Bennett Aero Systems Co.  
El Segundo, CA

Plantronics, Inc.  
Santa Cruz, CA

Hughes Aviation Services  
Las Vegas, NV

Kings Avionics Radio Repair  
Olathe, KS



**DODIE GANN**  
Friday Harbor, WA

**PHYLLIS BAER**  
Mercer Island, WA

**CLASSIC 16**

**Wing Derringer D-1 320 hp**

*Sponsored by:*  
*Red Mill Farm*  
*Ranching*  
*San Juan Island, Washington*

Coming up 'tis six Classics for Dodie & Phyllis and sure they will do their part in providing excitement — Dodie with Commercial, single/multi engine and Instrument has 1250 hours — is a wrangler with Red Mill Farm . . . Author, rancher, husband, Ernest K. is also a pilot. Education, companionship and competition keep Dodie in the racing circle.

Phyllis uses her experience of 1350 hours, Commercial, single/multi land, Flight Instructor Airplane/Instrument and Instrument Ground Instructor in her work at Flightcraft Inc. Husband, Charles is a retired Pan American Captain . . . of their four children two are pilots. Phyllis enjoys ladies who race — experience gained is invaluable. Greater Seattle 99s claim this team.



**Bonus!!**

**23rd ARC Contestant  
to land at Scottsbluff will  
receive a very special  
photograph of the Bluff.**

**Compliments of Scottsbluff  
Gering United  
Chamber of Commerce**





**MARION P. JAYNE**  
Palatine, IL



**LORRIE BLECH**  
Beverly Hills, CA

**CAROLE ROSE**  
Culver City, CA

**CLASSIC 17**

Piper PA 39 Twin Comanche 320 hp

*Finfield Aviation  
The Landings Airport  
Huntley, Illinois*

Marion, professional racer, business entrepreneur, President Grand Prix Air Race, has 3800 hours with Airline Transport, single/multi land, Flight Instructor Airplane/Instrument—member Chicago Area 99s. Marion writes, "She has won more cross-country air races than any other competing pilot and likes competition to keep her pilot skills sharp." . . . two grandchildren and two of four children are pilots.

**CLASSIC 18**

Piper PA 28-236 235 hp

*Sponsored By:  
Sorrento Market  
Italian Deli & Market  
Culver City, California  
Fred Rose Upholstery  
Custom Upholstery  
Culver City, California*

This is the first Classic for Carole — welcome! With her 625 hours — Commercial — Flight Instructor Airplane — is employed by Danforth Aviation and member of San Fernando Valley 99s. Doing those custom stained glass windows sounds interesting, but I'll bet your volunteer work with Flying Samaritans is more rewarding . . . we are grateful to pilots who share themselves with this organization. Carole and Steven are the proud parents of three children and one grandchild.

Proficiency, fun and seeing new territory — is reason Lorrie races — come June will be her fourth Classic. Part of 8000+ hours has been spent instructing at Danforth Aviation . . . Commercial, single/multi land, single sea, Instrument, Flight Instructor Airplane — San Fernando Valley 99s claims Lorrie.

**Sincere Thanks To:**

- Charlene Falkenberg
- Carol Clarke
- Nina Rookaird
- Evelyn Kropp
- Shirley Tanner
- Helen McGee
- Connie Luhta
- Mardo Crane
- Francis Brown
- Claude Glasson
- Glenn Lanmon
- Judy Hall
- Joan Paynter
- Maisie Stears
- Dorothy Niekamp
- Marilyn Jack Savage
- Shirley Zillig
- Beth Fuhrman





"SOPH" PAYTON  
Clearwater, FL



PAT FAIRBANKS  
Cincinnati, OH



PAULINE MALLARY  
Fairburn, GA

### CLASSIC 19

Piper PA 28-181 180 hp

Soph with 3100 hours — Commercial, Instrument, Glider — is flying her sixth Classic. Her husband Neal, retired U.S. Airline Captain and Soph share twin engine 30' Trojan yacht for deep sea fishing in the Gulf. A member of the Suncoast 99s — was named Queen of the Winter Frolic of the Silver Wings in March, 1984. She has worked in many fields of Aviation and at present, a housewife, enjoying the beach, sailing and swimming.

Welcome Pat . . . to your first Classic — Pat with 6000 + hours has acquired an ATP, single land/sea, multi land, Flight Instructor Airplane/Instrument and Helicopter, Private Glider and the Ground Instructor Ratings. Husband Don is a pilot as well as one of her three children — five grandchildren. A member of All Ohio 99 Chapter.

### CLASSIC 20

Beechcraft C23 180 hp

Pauline — "I believe that competition is healthy. It provides an opportunity to utilize all of ones pilot skills, to stay sharp, and creates a feeling of accomplishment that stimulates the ego which is so necessary in competition."

Pete, a captain with Eastern Airlines, says Pauline is a darned good housewife, their one child is not a pilot . . . with 3690 hours, Commercial, single land/sea, Instrument, Flight Instructor Airplane, has flown five Classics — member of North Georgia 99s.



BROWN



FOOD • FUN • FORTUNE

# Bartons

CLUB

## 93

INC

- CASINO
- OPEN 24 HOURS
- NIGHTLY BUFFET
- FREE COURTESY VAN
- ENTERTAINMENT
- CONVENTION CENTER
- FREE RV HOOK-UPS
- MUNICIPAL GOLF

**(702) 755-2341** • JACKPOT, NEVADA  
40 MINUTES FROM TWIN FALLS  
THE FRIENDLIEST SPOT IN NEVADA





**DEBI PFISTERER**  
Pittsburgh, PA

**SUE SIMLER**  
Trafford, PA



**NORMA FUTTERMAN**  
Beverly Hills, CA



**AILEEN PICKERING**  
Sherman Oaks, CA

### CLASSIC 21

**Cessna 172 RG 180 hp**

*Sponsored by:*

*Youngblood Electronic Metals  
Greensburg, Pennsylvania  
General Cruise Agency (Travel Agent)  
Pittsburgh, Pennsylvania  
Aircraft Supply (aircraft parts sales)  
W. Mifflin, Pennsylvania  
Tigano's Inn (restaurant)  
Pittsburgh, Pennsylvania  
Corporate Jet Inc. (aircraft charter)  
W. Mifflin, Pennsylvania  
Air Science Consultants (meteorologists)  
Budgeville, Pennsylvania*

Sue is flying her fourth Classic with 1500 hours — Commercial, single/multi land, Flight Instructor Airplane/Instrument Advanced and Instrument Ground Instructor. She is currently full-time Flight Instructor, sells aviation novelties, and is a member of Steel Valley 99s. Sue loves racing because it helps her sharpen her flying skills, see new parts of our country and meet new friends.

Debi is Market Development Sales Manager with AC Delco General Motors Corporation. She is flying her third Classic — 1264 hours — Commercial, single/multi land, Instrument — Steel Valley is her 99 Chapter. Debi is a member of AFTRA and free lance fashion model — These girls can really strut! — New Orleans style, that is.



### CLASSIC 22

**Beechcraft Bonanza A-36 285 hp**

*Sponsored by:*

*Lynn's Aircraft Engines, Inc.  
Lynn Cooter  
Long Beach, California  
(A/C Engine Maintenance)*

Racing has become a habit for Norma — flown all the Classics — 2700 hours — Commercial, single/multi land, single sea, Instrument, Glider, Basic Ground Instructor — member of Los Angeles 99s. Husband Charles is a retired supermarket operator and they have two children. A Kentuckian by birth, Norma loves music, photography, cooking — but at present spends all her time on the golf links! Norma writes "when in the course of human events it becomes time to fill out a race entry, it always seems to be the last minute — time just races by these days!"

For most people, perhaps, but not Aileen! Just take a look at her picture! Time racing backwards? With Commercial, single land/sea, Aileen has acquired 2050 hours — flown six Classics — member of Los Angeles 99s. A self employed Realtor for 24 years, she has one child and three grandchildren — an avid golfer — Aileen takes her clubs everywhere, but in races. Why not have them aboard this race!

#### Sincere Appreciation to:

Redwood Empire Ice Arena  
of Santa Rosa

Aircraft Technical Publishers, Brisbane, CA

King Radio Corporation, Olathe, KS

Spruce Creek

Daytona Beach, Florida

Holiday Inn, Thomasville, Georgia

Mapelli Meat Company, Las Vegas

Bendix Aerospace-  
Electronics Group

Western Davis Ltd. of Denver

Cactus Pete Inc., Jackpot, NV



TRISHA WHALEY  
Phoenix, AZ



RUBY SHELTON  
Phoenix, AZ



MARY ANN NOAH-HAMILTON  
Shawnee Mission, KS



VEE ST. JOHN  
Kansas City, MO

### CLASSIC 23

Cessna Cardinal 177RG 200 hp

*Sponsored by:  
Alston, Edwards & Novak  
Law Firm  
Phoenix, Arizona*

Trisha and Ruby WELCOME to Air Race Classic!

Trisha is a speech-language pathologist, director-lecturer at the Speech and Hearing Clinic, Arizona State University. 260 hours with Instrument — member of Phoenix 99s . . . hoping come June will be an exciting and thrilling event in your life.

What an interesting career, Ruby — Corporate pilot, Flight Instructor, has surveyed for National Geographic Society, presently with firm preparing surveys, aerial photographs and data used for construction, mining and drilling operations. Phoenix is her 99 Chapter — holds Commercial FAA Examiner, single/multi land, single sea, Instrument, Flight Instructor Airplane/Instrument, Helicopter Flight Instructor and type-rated on T-38 Jet — all this in a period of 12,000 hours . . . loves competition.

In Appreciation of:

Jeppesen Sanderson  
FAA Control Towers  
Borelli and Ficca  
Leo T. Zuckerman, Esq.  
H. Glenn Buffington  
Canyon Springs Inn  
National Weather Service  
Flight Service Stations  
Dale Craig  
Federal Communications  
Commission

### CLASSIC 24

Piper PA 24-260C 260 hp

Buying winter clothing in June in Walla Walla was the first experience of not making deadline finish in twenty years of racing. Mary Ann says — "You may call it humorous — I call it tearful!" With 6000 hours — Commercial, single/multi land, Instrument, Private Helicopter and Hot Air Balloon — flown six Classics, she is a member of Kansas City 99s. Four children, two stepsons, five grandchildren, husband Gordon, who is a stockbroker cheers this team onward.

Vee enjoys flying with Mary Ann and "Mary Ann talked me into racing!" She is a Braille Transcriber and enjoys hobbies, beach combing and scuba diving. Her husband Andrew is also a pilot. Vee has acquired 750 hours with Commercial and Instrument, and flying her second Classic.

SINCERE THANKS TO:

Lois Snapp  
Brad Pearson  
Jean and Charles Schulz

**Holiday Inn®**



The Water Wheel  
Restaurant & Lounge

I-44 & Hwy 71 / 3615 Range Line Rd.  
Joplin, Missouri  
417-782-1000

Indoor Recreation Center  
Airport 8 miles. Free transportation  
**ALL MAJOR CREDIT CARDS ACCEPTED**





**LYNNE KASTEL**  
Salinas, CA

**DIANA PETERSON**  
Watsonville, CA



**A. LOUISE BELL**  
Walnut, CA

**TOOKIE HENSLEY**  
Riverside, CA

**CLASSIC 25**  
**Beech Bonanza F33-A 285 hp**

Welcome to the Air Race Classic Diana & Lynne! Diana with Instrument, 370 hours, is currently working on Commercial — and feels racing will sharpen her flying skills and have fun too. Her husband, Dick, is a pilot and Financial Vice President of Frozen Food manufacturer. Mother of three children, one grandchild, Diana is a bookkeeper for FBO, United Flight Service . . . is a member of Monterey Bay 99s.

Lynne has worked for the Monterey County Planning Department since 1979 as an urban planner preparing general plans and research documents. A member of the Monterey Bay 99s, she has acquired 390 hours with Instrument — and as a skydiver, one jump. This team's first effort in the Classic and we wish you the best!



*A very special thanks to  
Bob Hoover*

**CLASSIC 26**  
**Cessna 172M 150 hp**

*Sponsored by:*  
*Fiesta Kampers & Trailers*  
*Campers — Trailers, Sales & Service*  
*San Bernardino, California*  
*Michael Bell*  
*Fiedler & Bell, Attorneys*  
*Riverside, California*

Inland Chapter 99s proud to claim Tookie as is husband Don — pilot — and two children, three grandchildren. Tookie with Commercial and Instrument, 1050 hours, three Classics — is a full time volunteer for the Aviation Community — County Airport and Airport Land Use Commissioner — (first woman to be selected) on Airport Boosters Executive Board . . . avid tennis player, water skiing — best of all flying and racing — to see the great friends — to win, but mainly to improve my skills and fulfill the competitive streaks.

Louise — we welcome you to Air Race Classic . . . envy you being both, an RN and Flight Instructor, but not the 'herding' of those six children. Airline Transport, single/multi land, Flight Instructor Airplane/Instrument with 2300 hours — an understanding attorney pilot, Michael . . . proud owners of a 1941 PT17 — cats, dogs — when do you find time for reading!

In gratitude to:

- Embry Riddle, Bunnell, Florida
- Barton's Club "93"
- Jackpot, Nevada
- Air Associates, Jeffco Airport
- Bloomfield, CO
- Beech Aircraft Corporation
- The Union Democrat, Sonora, California
- River Oaks Industries Montgomery, Alabama
- John Q. Hammons Hotels Inc.
- Holiday Inn, Joplin
- HON Corporation International, Hayward, CA
- Mapelli Meat Company
- Golden Banner Press, Corpus Christi, TX



**JUANITA HALSTEAD**  
Montgomery, AL

**ESTHER LOWRY**  
Thomasville, GA

**CLASSIC 27**

**Cessna R172K (XP) 195 hp**

*Sponsored by:*  
Riveroaks Industries, Inc.  
Mobile Home Manufacturer  
Boaz, Alabama  
Sunshine Village  
Woodland Hills  
Modern Trailer Park and Sales  
Mobile Home Dealers  
Montgomery, Alabama

Esther's 4500+ hours has been 'built' by flying trips for her business, Holiday Inn of Thomasville, which she and sister are owners — adding to this seven Classics — Commercial, Instrument, Flight Instructor/Airplane. Carl and Esther are parents of five children/six grandchildren with no, no, no on pilots. Deep South 99s claim Esther.

Juanita with 2500+ hours is flying her third Classic — has single/multi land and Instrument . . . member of Alabama 99s . . . betcha those four great grandchildren, twelve grandchildren and five of her very own are happy that Juanita is "just" a housewife — husband Foy, retired contractor and one son are pilots. Wonder who the Controller was speaking of last year when we heard "No, they're not napping, they're really from 'way down' South."

**RIVER OAKS INDUSTRIES, INC.**  
BOAZ, ALABAMA

MONTGOMERY DEALERS



**GINI RICHARDSON**  
Yakima, WA

**CLASSIC 28**

**Piper PA 28-181 180 hp**

*Sponsored by:*  
Richardson Aviation  
Yakima, Washington

Gini with 25,000 hours has acquired Airline Transport, single/multi land, single sea, Flight Instructor Airplane/Instrument, Commercial Helicopter, Glider — Instructor for the three Ground Instructors, FAA Examiner and flies Cessna 402 on Military Contract. Husband Ralph, renown for work in spraying/crop dusting, daughter Jill is flying 1st officer with Alaska Airlines. Gini has flown three Classics, member of Inter Mountain 99s . . . has a law degree (Juris Doctorant) and raises/trains thoroughbred horses for hunting and jumping.



**Thomasville Unicom—**  
**Cessna 4365 Hotel India,**  
**arriving 20 minutes — please call**  
**HOLIDAY INN for two**  
**doubles and transportation**



**HOLIDAY INN, THOMASVILLE, GEORGIA**





**JUNE BEERS**  
Rochester, MI

**SAMMY McKAY**  
Grand Blanc, MI



**BARBARA ANN McKINNEY**  
Fairfax, VA

**DOT ETHERIDGE**  
Washington, D.C.

**CLASSIC 29**  
**Cessna 210J 285 hp**

*Sponsored by:*  
*Dear "Ole" Dad*  
*"Full time since '58"*  
*Grand Blanc, Michigan*

Sammy: 'Who knows why I race' — 'see all the winners at the start — hear race experiences.' Sammy has flown all Classics — with satisfaction . . . up there with 3600 + hours, Commercial single/multi land, Helicopter, life member Michican 99s. Employer is self — housewife and I'll bet a good one. Sammy and George (retired) have one son and two grandchildren.

June discovered the fun of racing in last years Classic — in her 1100 hours she has acquired a Commercial, single/multi land, single sea, Flight Instructor Airplane/Instrument and the three Ground Instructors. She is employed by General Dynamics land systems division — Industrial Relations, Group Insurance Administrator. Robert, her husband is Vice President manufacturing at Fruehoff Corporation. June, too, belongs with Michigan 99s.

**CLASSIC 30**  
**Beechcraft Bonanza V-35 285 hp**

*Sponsored by:*  
*Community Savings & Loan*  
*Bethesda, Maryland*

Dot has recently added Jet type-rating to her Airline Transport, FAA Examiner, single/multi land, Flight Instructor Airplane/Instrument, and three Ground Instructor Ratings . . . totaling 10,800 hours. Director of Flight Operations and Executive assistant to the chairman of the Board of EPIC Holdings, Ltd. Dot is mother of one, has flown four Classics — races for fun and competition — and wow what a competitor . . . by race time Dot will have received a Bachelor of Science in Professional Aeronautics.

Barbara Ann . . . we trust your first Classic will rekindle your interest in flying. Barbara, an attorney and C.P.A., experience includes financial management and real estate, securities and tax law, is Vice President of Finance & General Counsel with EPIC Holdings, Ltd. Dot and Barbara are members of the newly organized National Capitol 99s.



**HELEN WILKE WILL FLY CHASE PLANE**



**PAULINE GLASSON**  
Corpus Christi, TX

**BARBARA LEWIS**  
Corpus Christi, TX



**BARBARA GOETZ-SESTITO**  
Fair Oaks, CA

**THELMA CULL**  
Fair Oaks, CA

**CLASSIC 31**  
Cessna 172N 160 hp

Pauline has flown all Classics — acquired 35,000 hours, Commercial, single land/sea, multi land, Flight Instructor Airplane/Instrument, Private Glider and Advanced/Instrument Ground Instructor . . . member of Tip of Texas 99s, Airport and Humane Society Advisory Board. Husband, Claude is retired from aerial photography and pipeline patrolling.

Barbara is first Vice-President of Texas Medical Association Auxiliary, Chairman of Tip of Texas 99s . . . makes second Classic for her and the thrill of flying the fly-bys and finish line appears to be the only reason for her racing. Husband, Joe, is a pathologist — neither he, her four children or two grandchildren are pilots.

**CLASSIC 33**  
Piper PA 260B 260 hp

*Sponsored by:*  
A. Goetz & Son, Inc.  
Heavy Equipment, Sales — Rentals  
Sacramento, California  
Yurika Foods Corporation  
Anthony Sestito, Distributor  
Sacramento, California

'Each race I fly I learn something new (does that mean reading manual before venturing into a new plane) — an excellent way to maintain proficiency and I love the people I meet'. Barbara, the talented lady, with an Aircraft Power Plant Mechanic License is Corporate pilot for her company, has Commercial, Instrument, Flight Instructor Airplane and Helicopter with 1960 hours — International Secretary of the Ninety Nines and International Treasurer of the Whirley Girls. The numbers — three children, two grandchildren, husband, Anthony, and has flown six Classics.

Sacramento Valley 99s boasts the membership of this team! With 575 hours Thelma has crossed the country five times in a Classic Race — the humorous experiences too many to mention — don't be bashful, Thelma. Both, Thelma and pilot husband Neil are teachers. Proficiency counts, but what's more important than friendship!

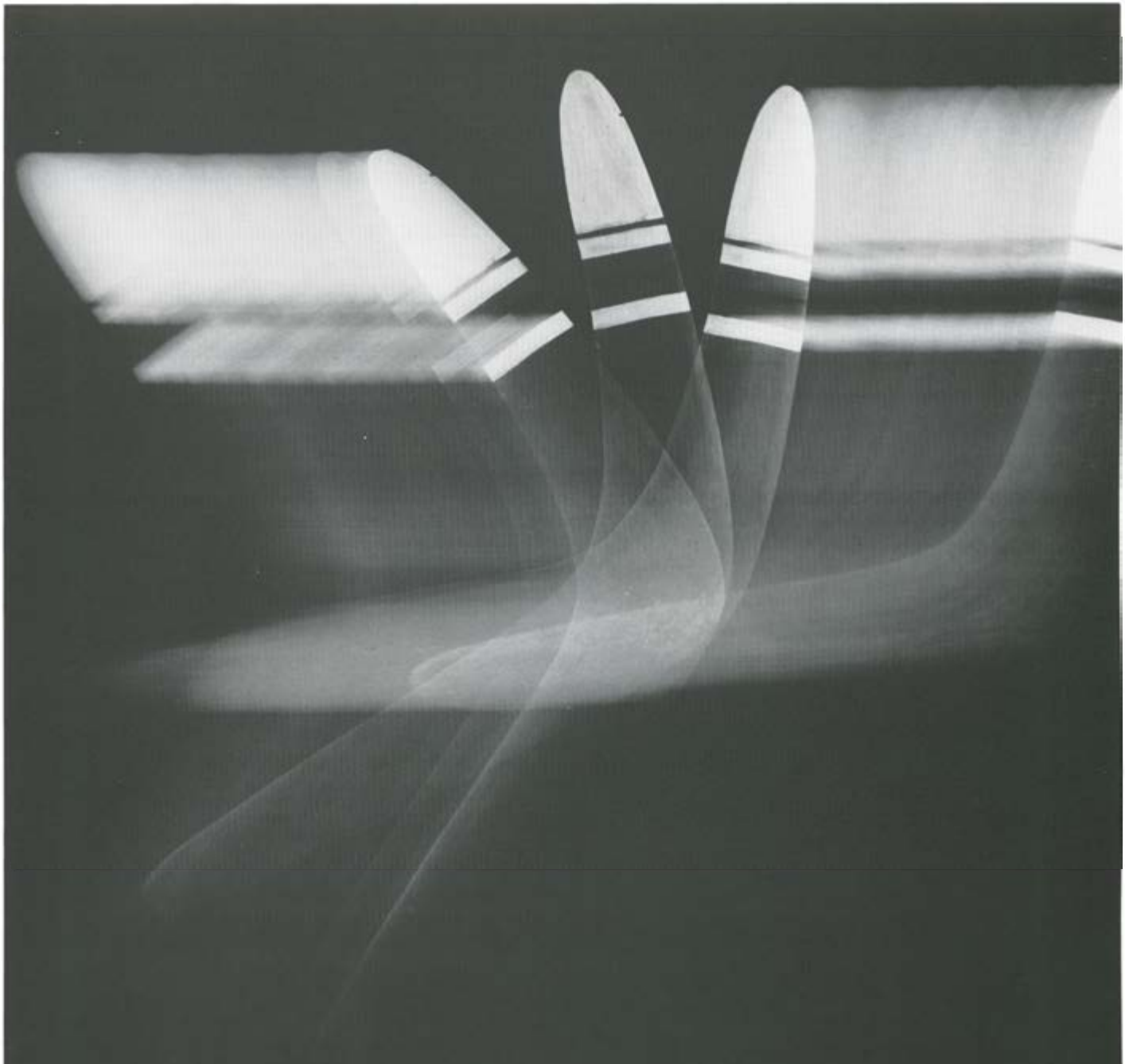


**WESTERN DAVIS, INC.**  
P. O. BOX 5542  
DENVER, COLORADO 80217  
(303) 292-1711

*Good Luck, Racers!*

**Herman and Betty Mapelli**





# One of the few things in this world that flies without Bendix.

Historically, Bendix has been an integral part of the aviation industry. Just finding a production airplane built in the free world without a Bendix product would be difficult if not impossible.

A list of our aviation products would include communications, navigation, identification systems; weather radar, flight and engine

instruments; automatic flight control systems; air data and motion sensors; electrical connectors; generators, magnetos, starters, ignition components and fuel controls; hydraulic actuators and power transmission devices; landing gear, wheels, brakes and skid control equipment; plus, ground-based power, test and navigation equipment.

You might say that covers everything, from nose to tail.

And we haven't included all the new things we're working on for the future.

But everyone expects more from a leader. And that's what you'll get from Bendix. As long as people make things that fly.



Best Wishes to participants  
in the 1984 Air Race Classic  
. . . Monfort of Colorado, Inc.  
producers of quality beef and lamb products.



**Monfort**



# King introduces three ways to economize without compromise.



## \$2,150

Solid savings on an all solid-state DME.



## \$12,500

You've never seen a radar this good at a price this low.



## \$2,675

Today's best-selling NAV/COMM, priced to sell even better.

There's obviously more than one way to economize on new avionics.

You can compromise on features. You can compromise on brand. You can compromise on products of lesser quality or performance.

Or, you can act now to take advantage of these special values from King—and get exactly what you want at a price that saves you money.

That's economy without compromise.

And that, in a nutshell, is what makes the KN 64 panel-mounted DME such an unbeatable investment.

An all solid-state DME with full 200-channel capability, the KN 64 delivers 35 watts of power output, direct or remote NAV channeling, instant lock-on, easy-to-read and reliable gas discharge digital readouts, and simultaneous distance, ground-speed and time-to-station display—all at a low sale price that's now hundreds less than its original introductory list cost. A substantial savings!

When you're trying to maneuver in and around convective weather, there's nothing like automatic stabilization to help keep your radar picture scanning straight-and-level.

Unfortunately, before King introduced the KWX 56, most stabilized radars were priced out of reach of the average piston aircraft owner.

Now, however, during this special limited-time offer, you can move up to digital 3-color stabilized radar at a price that's considerably lower than most *non-stabilized* competitive radars.

Using gyro inputs from your King Flight Director/Autopilot (or any ARINC standard vertical gyro), the KWX 56 offers you:

- Full stabilization in both pitch and roll axes
- Selectable ranges of 10, 20, 40, 80 and 160 nm
- 7.5 kilowatts of peak pulse power
- Choice of 10-inch or 12-inch flat-plate antennas
- Compatibility with the KGR 356 Radar Graphics system.

Best of all, you save over \$2,700 off the original KWX 56 factory list price.

Your choice of a basic NAV/COMM package will affect almost every other avionics decision you make.

So, why start off with a compromise? Especially now that King is offering the world's most popular NAV/COMM and CDI combination for little more than the price of the radio alone.

With features like "flip-flop" frequency pre-select, non-volatile frequency storage, self-dimming gas discharge readouts, and solid-state electronic tuning of all 200 NAV and 720 COMM channels, the King KX 155 packs more value into its 2-inch panel slot than any comparable NAV/COMM unit you can buy.

And, for a limited time, when purchased with the KI 208 CDI, you can save \$450 off the combined individual list prices.

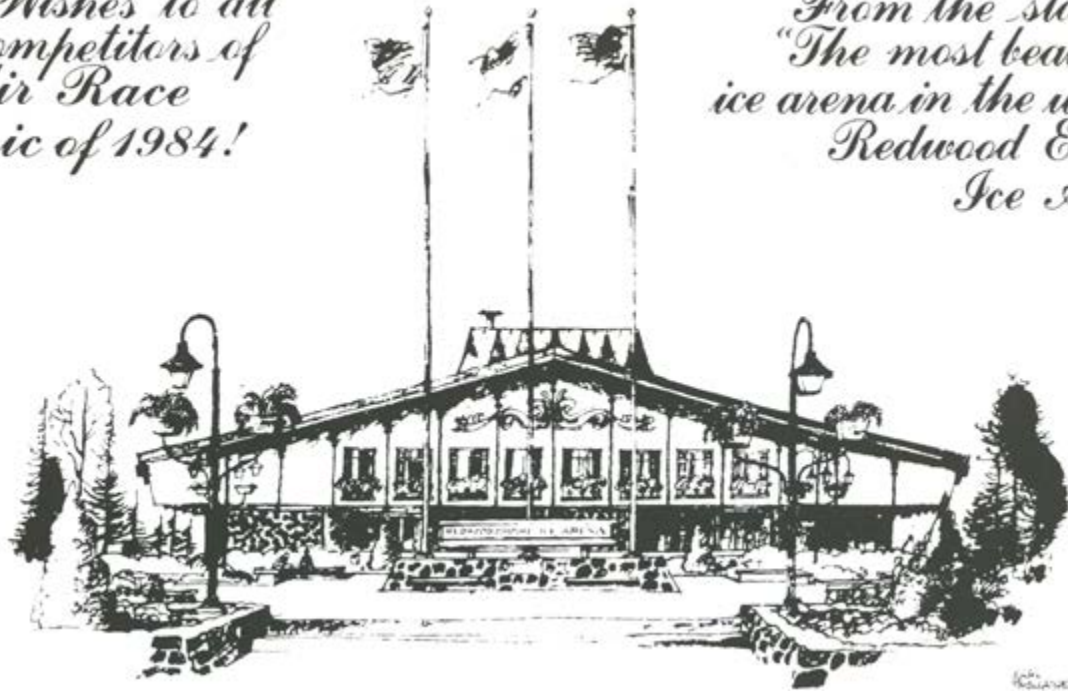
It's almost like getting the CDI unit *free!*

For full details on these and other specially priced packages, see your nearest King Authorized Sales and Service Center, or contact: King Radio Corporation, 400 North Rogers Road, Olathe, KS 66062 • (913) 782-0400 • Telex: WUD (0) 4-2299 • Cable: KINGRAD • King Radio S.A., P.O.B. No. 6, 80 Ave. Louis Casai, 1216 Cointrin—Geneva, Switzerland • Tel. Geneva 98 58 80 • Telex: 289445 KING CH CABLE: KINGRADIO • MEMBER OF GAMA

\*Prices are recommended AON list, subject to change without notice.

*Best Wishes to all  
the competitors of  
the Air Race  
Classic of 1984!*

*From the staff of  
"The most beautiful  
ice arena in the world,"  
Redwood Empire  
Ice Arena.*



## REDWOOD EMPIRE ICE ARENA

1667 WEST STEELE LANE, SANTA ROSA, CALIF. 95401. (707) 546-7147

# HON

Hon Corporation International

A California Corporation

1526 W. Winton Avenue • Hayward, California 94545 • (415) 887-8759 • Telex: 296610





# AWARDS

## **FIRST PLACE**

Air Race Classic award for Pilot and Co-Pilot and \$5,000.00 cash. Av Charts donated by Jeppesen-Sanderson. Perpetual Trophy donated by Toledo Area Chamber of Commerce.

## **SECOND PLACE**

Air Race Classic award for Pilot and Co-Pilot and \$3,000.00 cash. Av Charts donated by Jeppesen-Sanderson.

## **THIRD PLACE**

Air Race Classic award for Pilot and Co-Pilot and \$2,000.00 in cash. Holding Pattern Computer and Chartab by Jeppesen-Sanderson.

## **FOURTH PLACE**

Air Race Classic award for Pilot and Co-Pilot and \$1,500.00 in cash. Holding Pattern Computer and Chartab by Jeppesen-Sanderson.

## **FIFTH PLACE**

Air Race Classic award for Pilot and Co-Pilot and \$950.00 in cash. Holding Pattern Computer and Chartab by Jeppesen-Sanderson.

## **SIXTH PLACE**

Air Race Classic award for Pilot and Co-Pilot and \$700.00 in cash. Holding Pattern Computer and Chartab by Jeppesen-Sanderson.

## **SEVENTH PLACE**

Air Race Classic award for Pilot and Co-Pilot and \$600.00 in cash. Chartab by Jeppesen-Sanderson.

## **EIGHTH PLACE**

Air Race Classic award for Pilot and Co-Pilot and \$500.00 in cash. Chartab by Jeppesen-Sanderson.

## **NINTH PLACE**

Air Race Classic award for Pilot and Co-Pilot and \$400.00 in cash. Chartab by Jeppesen-Sanderson.

## **TENTH PLACE**

Air Race Classic award for Pilot and Co-Pilot and \$350.00 in cash. Chartab by Jeppesen-Sanderson.

## **BEECH AIRCRAFT AWARDS**

\$1,500 if first place winner is flying a Beechcraft.

\$750.00 if a Beechcraft is second place winner.

\$500.00 if a Beechcraft is in the first ten to place, but not first or second.

\$100.00 each to the next four Beechcrafts placing in the race, but not necessarily in the first ten.

**TO THE TEAM WITH THE HIGHEST SCORE** (Pilot and Co-Pilot) over sixty years of age \$250 (not in top 10) donated by Jean and Charles Schulz.

**HIGHEST SCORE FOR CONTESTANT** (not having used any weather service or consultant). Weather Service of 1985 Air Race Classic (non transferable) by C. L. Chandler, Atlanta, Georgia

**MEAT HEAD AWARD - LAST BUT NOT LEAST** to the fortunate pilot or pilots that place last in the 1984 Classic: one box each-Rib Eye, Strip Sirloin and Filet Mignon Steaks . . . a total of three boxes to each. Donated by Eugene M. Mapelli, Mapelli Meat Company, Las Vegas.

**HIGHEST SCORE FOR 1ST TIME RACER** - (never having flown any race) by HON Corporation International— a Convertible Bicycle . . . "you can hide the bike but not the features."

**OLDEST FLYING GRANDMOTHER -PIC- AWARD** by Aircraft Technical Publishers - \$250

**YOUNGEST FLYING GRANDMOTHER -PIC- AWARD** by Aircraft Technical Publishers - \$250

**HIGHEST SCORING TEAM** (not in the top ten) flying the personal aircraft of either pilot or co-pilot \$250— donated by Jean and Charles Schulz.

**Ms MID-PACK AWARD** by Stephanie D. Mapelli, Vice President Mapelli Meat Company of Palm Springs - to the lucky Pilot and Co-Pilot placing in the "MIDDLE OF THE PACK" who are not eligible for any other awards in the 1984 Air Race Classic: one box each of 12 oz. New York Strip Steaks and one box of Jumbo Prawns - total of two boxes for each.

**BEST SCORING CALIFORNIA TEAM** (not in top ten) — \$250 — Ruth Dilg Memorial Fund.

**TEAMS LIVING EAST OF THE MISSISSIPPI**

- Place 1. Sky Valley Resort, Dillard, Georgia — One week for two persons (lodging only) in one of our Condominiums.
- Place 2. Holiday Inn, Thomasville, Georgia — Lodging for two persons for two nites — prime rib dinner for two — admission tickets for two to Pebble Hill Plantation — admission tickets for two on Plantation Tour (Chamber of Commerce).
- Place 3. Holiday Inn of Mountain Home, Arkansas — One night's lodging and one float trip on the famous White River for trout fishing.

**HIGHEST SCORE IN EACH CLASS OF AIRCRAFT OF WHICH THERE ARE AT LEAST THREE IN COMPETITION.** \$100.00 each: donated by Air Race Classic 145-179hp; 180-212hp; 213-252hp; 253-299hp; 300-570hp.



← Along your route!



→ Look to your left to see this!

## **The 1984 AIR RACE CLASSIC**

**To all the people at all the stops along the way . . . the future of the race depends upon loyal people such as you. Your support and interest will make the Air Race Classic a great success.**

**Directors and Participants  
would like to especially thank the people of  
Pasco and Gainesville  
for all their efforts to make the beginning  
and end of the race so special for us this year!**



# \* LEG PRIZES

Leg #	From	To	Place	Award	Thanks to:
1	Pasco	Twin Falls	1	\$250.00	Barton's Club "93" Inc. Jackpot, NV
			2	\$100.00	Barton's Club "93" Inc. Jackpot, NV
			3	Set of Thermocon-F Heat Screens	Morgan Stanford Aviation Berkeley, CA
2	Twin Falls	Rock Springs	1	\$150.00	Thermo King Co. Commerce City, CO
			2	Grimes Strobe Light	Midland-Ross Corporation Grimes Division Urbana, OH
			3	\$99.00	Colorado 99s
3	Rock Springs	Scottsbluff	1	Telex 5x5 Mark 2A Boom Microphone Headset	Hughes Aviation Services Las Vegas, NV
			2	\$125.00	Aircraft Technical Publishers San Francisco, CA
			3	\$100.00	Nebraska 99s
4	Scottsbluff	Dodge City	1	Gill Aircraft Battery (2)	Teledyne Battery Products Redland, CA
			2	\$125.00	Aircraft Technical Publishers San Francisco, CA
			3	2 Flying Jackets 2 Oxygen Masks	Goodyear Aero Space Corp. Akron, OH Puritan - Bennett Aero Systems Co. El Segundo, CA
5	Dodge City	Joplin	1	Plantronics StarSet Headset, Push to Talk Control and Leather Knee Carrying Case	Plantronics, Inc. Santa Cruz, CA
			2	\$125.00	Aircraft Technical Publishers San Francisco, CA
			3	\$100.00	Palomar 99s
6	Joplin	Paducah	1	Pacific Plantronics Headset	Kings Avionics Radio Repair Olathe, KS
			2	\$125.00	Aircraft Technical Publishers San Francisco, CA
			3	\$100.00	Chicago Area 99s Indiana Dunes 99s
7	Paducah	Gainesville	1	\$150.00	Thermo King Co. Commerce City, CO
			2	\$100.00	Dorothy Niekamp Marilyn Jack Savage
			3	2 Flying Jackets 2 Oxygen Masks	Goodyear Aero Space Corp. Akron, OH Puritan - Bennett Aero Systems Co. El Segundo, CA

\* Teams placing in top ten not eligible for leg prizes.



Do something . . . Lead,  
follow,  
or get out of the way!



# ***MAINTENANCE***

ATP has it all  
on microfiche

Give us a call  
800 227-4610



**Aircraft Technical Publishers**  
101 South Hill Drive  
Brisbane, California 94005  
(415) 468-1705 Telex 171048

**Jerome C. Draper, Jr., Chairman**  
**William L. Daniels, President**  
**Caroline D. Bonner, Executive Vice-President**



# Anything He Can Do, You Can Do Better!

By today's standards, it's amazing that for so many years scores of challenging and exciting career fields were closed to all but the most aggressive and exceptional of women. In fact, it's more than amazing; it's tragic.

Fortunately, such narrow-mindedness was not universal. For nearly six decades, Embry-Riddle Aeronautical University has prepared responsible men and women for the aviation careers of tomorrow.

Modern campuses in Daytona Beach, Florida and Prescott, Arizona offer outstanding flying conditions year round.

Advanced flight simulators and fleets of single and twin engine aircraft are available, supplemented by ground



training unsurpassed in the field.

If you'd rather keep both feet on the ground, however, there's still no need to miss out. There's much more than Flight offered at Embry-Riddle. Associate and Bachelor degree programs also lead to opportunities in Aeronautical Engineering, Computer Science, Aviation Maintenance, Aviation Electronics (Avionics), and Business/Administration.

Whichever program of study you choose, you'll learn from a faculty with impressive academic credentials, as well as many years of practical hands-on experience



in every facet of the aviation industry. State-of-the-art facilities and equipment will prepare you for situations and problems normally encountered during the course of an aviation professional's working day.

Embry-Riddle is the world's only fully accredited and totally aviation-oriented university. Aviation industry leaders have come to regard an Embry-Riddle diploma as syn-

onymous with the highest of professional and educational standards.

Opportunities for women in modern aviation have never been better. A challenging and exciting career can be yours! Let Embry-Riddle show you how.

To learn more about how to get started, fill out the coupon below and send it in today. Or call us toll-free at 1-800-874-9912; in Florida, 1-800-432-2376.

© 1983 Embry-Riddle Aeronautical University

Please send me more information about E-RAU.

Name \_\_\_\_\_

Address \_\_\_\_\_

City \_\_\_\_\_

State \_\_\_\_\_ Zip \_\_\_\_\_

Soc. Sec. No. \_\_\_\_\_

Phone ( ) \_\_\_\_\_



**Embry-Riddle  
Aeronautical University**

Department of Admissions  
Box 540  
Bunnell, FL 32010

Embry-Riddle Aeronautical University adheres to the principle of equal education and employment opportunity without regard to race, handicap, sex, color, creed or national origin. This policy extends to all programs and activities involving or supported by the University.

5L

## Preparing You Today For Tomorrow's Aviation Careers.

**Discover  
the land of  
Discovery**



. . . Fly in to historic Columbia  
and relive the glorious days  
of the Gold Rush!

SERVED DAILY BY

**The Union Democrat**

LEADING NEWSPAPER OF THE MOTHER LODE

SONORA, CALIFORNIA

Since 1854

**1985  
AIR RACE CLASSIC  
starts in  
Redding, California  
June 29th  
and terminates  
Spruce Creek  
Daytona Beach, Florida  
July 2nd**

**Full-Support  
Aircraft  
Service**

**With a  
WINNER**

**AERO ASSOCIATES**

Hangar B4A  
Jeffco Airport • Broomfield, Colo. 80020  
303-466-1961





# AIR RACE CLASSIC WINNERS

## 1977

Marion Jayne, Nancy Jayne — Joyce Wells — Luana Davis — Norma Futterman, Virginia Showers — Esther Wright, Judy Hall — Pat Jetton, Elinor Johnson — All Sharp — Jean Rose, Janice Free — Pat Gatlin, Pat Friedman — Velda Mapelli, Stephanie Mapelli.

---

## 1978

Sophia Payton, Helen Davison — Dot Etheridge, Dot Wilson — Pat Jetton, Elinor Johnson — Helen McGee, Norma Draper — Sammy McKay, Winnie DuPerow — Marion Jayne, Patricia Keefer — Helen Wilke, Kathy Long — Barbara Goetz, Thelma Cull — Joyce Wells, Alma Hinds — Susan Adler, Mary Santosuosso.

---

## 1979

Marion Jayne, Nancy Jayne — Margaret Ringenberg, Pat Wilson — Claire Walters, Eleanor Ruby Moore — Virginia Wegener, Lynn Carey — Tanya Cunningham, Caroline Ann Morey — Joan Paynter, Shirley Tanner — Dot Etheridge, Dot Wilson — Joyce Wells, Alma Hinds — Sophia Payton, Helen Davison — Jan Gammell, Ilovene Potter.

---

## 1980

Pat Jetton, Elinor Johnson — Sammy McKay, Marian Banks — Dot Etheridge — Marion Jayne, Patricia Keefer — Dottie Anderson, Marilyn Miller — All Sharp, Berni Stevenson — Alma Hinds, Joyce Wells — Suzanne Jablonski, Barbara Persons — Carolyn Pilaar, Gary Wheeler — Sophia Payton, Sherry Harper.

---

## 1981

Juanita Blumberg, Bonnie Quenzler — Edna Gardner Whyte, Patricia Hyde — Sammy McKay, Pauline Mallary — Marion Jayne, Nancy Palozola — Dottie Anderson, Marilyn Miller — Pat Jetton, Elinor Johnson — Esther Lowry, Betty Klein — Margaret Ringenberg, Janet Williamson — Sophia Payton, Helen Davison — Barbara Goetz, Thelma Cull.

---



BRAD PEARSON  
Official Starter

# SIXTH AIR RACE CLASSIC WINNERS — 1982



Maybelle Fletcher

Mary Byers



Martie Pearce



Pauline Glasson

Sue Gray



Margaret Ringenberg

Wilma Ashe



Bonnie Quenzler

Shirley Zillig



Nancy Palozola

Marion P. Jayne



Caroline Pilaar

Caroline Grubbs



Pat Jetton

Elinor Johnson



Susan Maule

Gary Wheeler



Dot Etheridge



## SEVENTH AIR RACE CLASSIC WINNERS — 1983



PILOTS (standing) LEFT TO RIGHT: GINI RICHARDSON, SHARON CRAWFORD, PAULINE GLASSON, "TOOKIE" HENSLEY, JUNE BEERS, LYNNE KAY ULICKI, FRAN BERA, JEAN "SUNNY" SCHIFFMAN, MARION JAYNE, ANNA KATE HIPP.  
CO-PILOTS (seated) LEFT TO RIGHT: MARIAN BANKS, MARIE HOEFER, DONNA GOLDEN, JANICE HOFFMAN, NANCY WALTERS, JAYNE ANN OVERGARD, BETTY FAUX, SUZY HENNEY, JEAN SPECKMAN, MERRY ROBERTSON.

*Notes and Autographs*



# A Family Affair



## IT'S MORE THAN JUST A CIRCUS!

**CIRCUS CIRCUS HOTEL/CASINO** — Dream became reality when Circus Circus opened its doors in 1968...an incredible casino-circus-midway complex in the heart of the Las Vegas Strip. 1,610 deluxe rooms and suites in twin 15-story towers and an adjacent five 3-story building complex. **CIRCUSLAND RV PARK** — pool, jacuzzi, saunas, 421 full-service hookups, convenience store, restrooms, showers, pet runs, and mini-bus service from the park to the hotel and casino. **SKY SHUTTLE** — linking the Wonderful Worlds of Circus Circus — Las Vegas. **AND IN RENO** — Circus Circus Hotel/Casino excitement awaits visitors of all ages, located in the center of downtown.

FREE CIRCUS ACTS  
of World Famous Performers  
11 AM to Midnight



Midway Games and  
World's Largest Electronic  
Games Arcade for  
Kids of all Ages

## CIRCUS CIRCUS

Las Vegas Room and RV Park Reservations

(702) 734-0410

or Toll Free from Utah, Calif., Oregon, Idaho and AZ

(800) 634-8833

All States (800) 634-3450

For Reno Reservations call

(702) 329-0711

or call Toll Free

(800) 648-5010



# 1984 RACE ROUTE



1983 RACE ROUTE



1982 RACE ROUTE



JUNE 27 — 30 1984  
2213.92 STATUTE MILES

1977 RACE ROUTE



1978 RACE ROUTE



1979 RACE ROUTE



1980 RACE ROUTE



1981 RACE ROUTE

