



GILLESPIE FIELD, EL CAJON —
(SAN DIEGO COUNTY), CALIFORNIA

TO

GRAND RAPIDS, MICHIGAN

JUNE 24 — 27, 1983

Official Program — \$3.50

At Spruce Creek, Everything's Unique.

Where else can you step from your back door to your attached planeport, taxi to your private 4,000 foot lighted airstrip and fly with the eagles? Nowhere but Spruce Creek! Where else can you find a 7,000 yard championship golf course, with no parallel fairways, carved from the forest, just a putt away from your patio? No place but Spruce Creek!

Where else can you stroll along a picturesque nature trail, pause at a breathtaking overlook and enjoy a winding waterway—untouched—unspoiled? Nowhere but Spruce Creek, America's only flying/golfing country club community, just

12 minutes from Daytona Beach—45 minutes from Orlando.

Spruce Creek was developed by Thompson Properties, Inc., who believe that luxurious living is not an unreachable dream but a way of life. It's yours—now—at Spruce Creek, where you'll live among active, vibrant neighbors who enjoy the things you enjoy: Flying. Golfing. Fishing. Boating. Tennis. Swimming. All in your own backyard! Whether you choose a taxiway, fairway or water overlook lot to build your dream home, or buy a 2 or 3 bedroom villa among the oaks and pines, you'll experience the ultimate in living at Spruce Creek.



Find out how easy it is to become a part of unique Spruce Creek at very reasonable Daytona-Orlando prices with extremely attractive financing. Call toll-free today: (800) 874-7778. Or fill out and mail the coupon below.



COUPON

Yes! I would like more information about Spruce Creek

Name _____

Address _____

City _____

State _____ Zip _____

Telephone _____

Gaige Walters, Marketing Director
SPRUCE CREEK
Route #1
Daytona Beach, Florida 32014
AR
America's Only Flying/Golfing Community





*A Warm
Welcome to*

**1983
AIR RACE CLASSIC
CONTESTANTS**

AIR RACE CLASSIC LTD.

P. O. BOX 187
ADDISON, TEXAS 75001

EDITOR PAULINE GLASSON
ASSISTANT EDITOR BARBARA LEWIS
PUBLISHER GOLDEN BANNER PRESS, INC.

INDEX

CONTESTANTS (ALPHABETICAL LISTING)	3
AIR RACE CLASSIC DIRECTORS	4-5
RACE START	6-7
ENROUTE STOPS	8-13
RACE TERMINUS	14-15
HANDICAPS	16-17
DESIGNATED AIRPORTS ON THE ROUTE	17
EVENTS	17
CONTESTANTS	18-36
AWARDS AND LEG PRIZES	42-43
1977 THRU 1981 AIR RACE CLASSIC WINNERS	47
1982 AIR RACE CLASSIC WINNERS	48

CONTESTANTS

Classic No.	Name	Page	Classic No.	Name	Page
32	Aikins, Mary	34	11	Lowry, Esther	23
18	Anderson, Dottie	26	7	Lyon, Melinda	21
30	Baer, Phyllis	33	28	Mallary, Pauline	32
4	Bank, Marian	19	26	Mapelli, Stephanie D.	30
16	Beers, June	25	26	Mapelli, Velda King	30
21	Bera, Frances	28	2	Maule, Susan	18
8	Brick, Kay A.	21	20	May, Gloria	27
14	Bull, Elaine	24	35	McCombs, Joan	36
29	Chamberlain, Kay	33	28	McKay, Sammy	32
17	Crawford, Sharon	26	20	McMillan, Marie	27
29	Creason, Mary	33	18	Miller, Marilyn	26
33	Cull, Thelma	35	13	Odorico, Ellie	24
7	Dinan, Elizabeth	21	10	O'Kelley, Genie Rae	22
34	Dobkowski, Colette	35	27	Overgard, Jayne Ann	32
30	Edson, Bonnie	33	12	Palozola, Nancy	23
34	Farmer, Patricia Ann	35	13	Pearce, Martha	24
21	Faux, Betty	28	24	Pearson, Mary	29
23	Futterman, Norma	29	23	Pickering, Aileen	29
3	Gann, Dodie	19	19	Pilaar, Carolyn	27
15	Gettle, Patricia	25	3	Potter, Ilovene	19
9	Glasson, Pauline	22	4	Richardson, Gini	19
33	Goetz, Barbara	35	5	Ringenberg, Margaret	20
9	Golden, Donna	22	1	Robertson, Merry	18
11	Halstead, Juanita	23	31	Schiffmann, Jean "Sunny" ..	34
32	Hamilton, Mary Ann	34	10	Shaw, Diane	22
31	Henney, Suzy	34	27	Ulicki, Lynne Kay	32
6	Hensley, Oleta "Tookie"	20	8	vander Linden, Pam	21
24	Hewette, Nena Jo	29	16	Walters, Nancy	25
25	Hinds, Alma	30	25	Wells, Joyce	30
1	Hipp, Anna Kate	18	2	Wheeler, Gary	18
17	Hoefer, Marie	26	22	Whyte, Edna	28
6	Hoffman, Janice	20	14	Williams, Peggy	24
5	Hyde, Patricia	20	35	Winzer, Christine	36
12	Jayne, Marion	23	15	Yoder, Janet	25
19	Klein, Betty	27	22	Yarborough, Dayna Gwen ..	28



Air Race Classic Ltd.

ARC Contestants:

An air race is a cross-country tour in the competition and educational mode. Each of you has visions of winning, but regardless where you place, the feeling of accomplishment should be paramount. Skillfully and safely navigating across the country, coping with the challenges encountered, will make you a better pilot for all your future flying.

Take the time to be courteous to the hundreds of people on the ground who have made it possible for you to participate in the seventh annual AIR RACE CLASSIC. You are representing not only ARC but all women pilots.

Thank you for your participation and support.

Fly well and God Bless,

Velda King Mapelli

ARC Board of Directors:

For the year round effort that culminates in the annual CLASSIC, eternal gratitude for your devotion of time and money. It is a profound pleasure to be affiliated with you.

Fond wishes for continued success in directing the CLASSIC.

Velda



Velda King Mapelli
President



Headquarters
Esther Lowry
 P. O. Box 1055
 Thomasville, Georgia 31792
 (912) 226-0994



Judy Hall
 2115 Sanjo Dr.
 Lizella, Georgia 31052
 (912) 935-8244



Pauline Glasson
 Route 2, Box 894
 Corpus Christi, Texas 78410
 (512) 289-1101



Barbara Lewis
 217 Cape Henry
 Corpus Christi, Texas 78412
 (512) 991-6102



Helen Wilke
 P. O. Box 1343
 Crested Butte, Colorado 81224
 (303) 349-6864



Pat Jetton
 P. O. Box 1343
 Crested Butte, Colorado 81224
 (303) 349-6864



Merry Robertson
 300 Woodland Way
 Greenville, South Carolina 29607
 (803) 232-0130



Anna Kate Hipp
 1 Bonaventure Drive
 Greenville, South Carolina 29615
 (803) 268-2022

D I R E C T O R S





Since John Montgomery's world's first controlled glider flight in 1883, San Diego has been associated with aviation. Twenty-four years after the first powered flight by the Wright Brothers in 1903, San Diego was the acknowledged "Air Capital of the West."

San Diego ranks high in aeronautical achievements with over forty world records in aviation. These records include altitude, distance, duration and speed recorded by army, navy, and civilian pilots from San Diego. Glenn Curtis made the first seaplane flight in 1911 in the Curtis A-1 at San Diego.

The "SPIRIT OF ST. LOUIS," the Ryan STA, Consolidated's PBY and B-24 are a few of San Diego's world famous aerial products.

From Glenn Curtiss' flight school on Spanish Bight in 1911 to NASA's Space Age Vehicles today and beyond, San Diego will continue to play a key role in America's Aero-Space future.

San Diego's Aero-Space Museum is preserving the aviation history for the edification and enjoyment of its many visitors. The Museum salutes the Seventh ANNUAL AIR RACE CLASSIC by hosting the Take-off Banquet.



Pat Fry pictured in the Women In Aviation Exhibit with the Air Race Classic trophy. Pat is chairman of the San Diego Chapter, Social, Publicity, and Housing Chairman.



BIENVENIDOS to SAN DIEGO

June 19 - 26 has been proclaimed "WOMEN IN AVIATION WEEK" in San Diego. HOSTESS Ninety-Nine Chapters PALOMAR and SAN DIEGO have planned:

- | | |
|----------------|--|
| Sun. June 19 | EARLY BIRD FIESTA — At Anna and Monty Hayes Rancho Bernardo home |
| Mon. June 20 | IMPOUND OPENS — MEXICO — Shopping and dinner in Tijuana |
| Tues. June 21 | VIP tour of SEA WORLD followed by dockside COCKTAIL PARTY and CRUISE around San Diego's picturesque harbor |
| Wed. June 22 | BALBOA PARK DAY — Reuben Fleet Space Theatre; world famous zoo, art galleries and Old Globe Theatre |
| | TAKE-OFF BANQUET — The exciting AERO-SPACE MUSEUM with its WOMEN IN AVIATION ROOM, will be the setting for the formal cocktail reception and banquet |
| Thurs. June 23 | PILOT BRIEFING |
| Fri. June 24 | WEATHER BRIEFING — Breakfast — TAKE-OFF Gillespie Field, El Cajon, CA |

CRADLE OF AVIATION



VERONICA "VI" CHAMBERS, Inspection; DARLINE "DOTTIE" SANDERS, DOROTHY CAMPBELL, and MARIAN DELANO, Credentials; BETTY WHARTON, Inspection/Airport Operations.



DOROTHY GROSS, Timer/Judge; EVELYN "LYNN" BRIGGS, Timer/Hospitality; LEAH LIERSCH, Timer/Judge; MAXINE SMITH, Chief Start Timer, Chief Start Judge.



MARY PEARSON and MARIAN BANKS, ARC Start Co-Chairmen.



L to R: GINNY BOYLES, Name Tags; VI PFEILER, LOIS DELAY, CONNIE FRANCIS and LOU ANN UNGER, Registration.



ELSIE WATSON, Financial; CAROL NEFT, Transportation; RAMONA BURK, Hospitality.



L to R: FRANCES PEEL, KATHERINE KENNARD, Hospitality; KAY BRICK, Publicity; MARY PEARSON, Palomar Chairman; PAM vander LINDEN, Ways and Means.

SPECIAL THANKS TO:

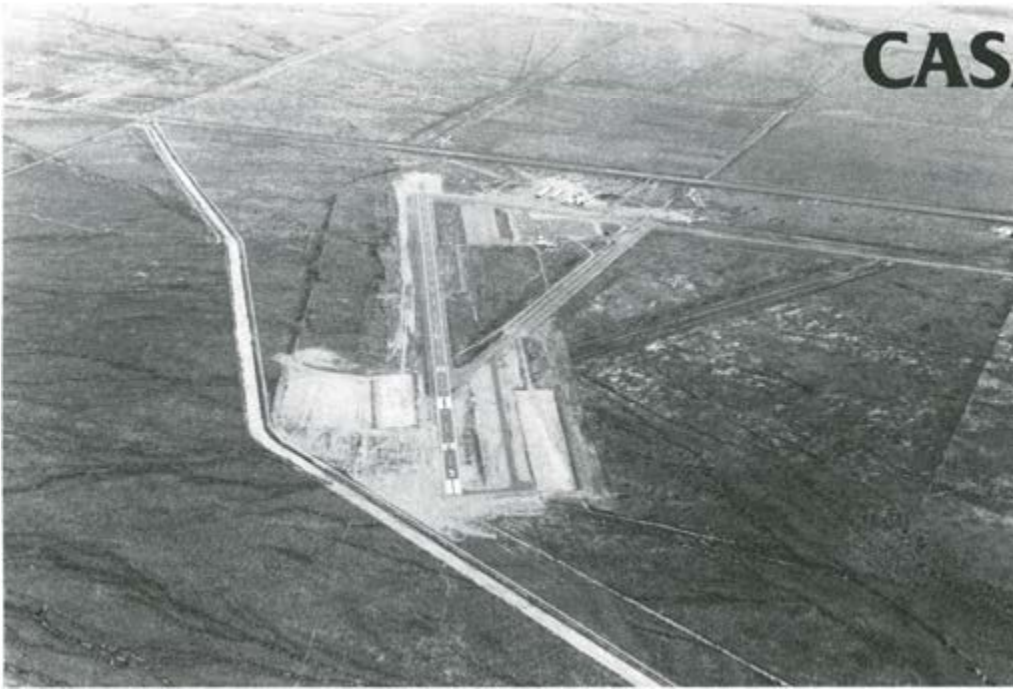
- El Cajon Valley Chapter of the Ninety-Nines
- Mission Bay Chapter of the Ninety-Nines
- C. A. Waldman, Director Airports Division
- Sylvia Gustavson, Airport Manager
- Erwin Stanicek, FSS Chief
- Ed Ray, Gillespie Tower Chief
- John Hull, GADO Manager
- Wilbur Shigehara, NOAA Weather Service
- Atlas Hotels
- Carefree Travel
- Civil Air Patrol
- El Cajon Chamber of Commerce
- Fallbrook Real Estate Company
- Hotel Corporation of the Pacific
- National Air College
- Pacific Southwest Airlines
- Salk Institute
- San Diego Unified Port District
- The Four Queens
- The Hawaii Express
- Contributors to the Fallbrook Airpark Avocado/Strawberry Festival

BRAD PEARSON
Official Starter



BOB STEVENS
Honorary Starter
Famous Cartoonist and
Aviation Writer

CASA GRANDE



Casa Grande, a city with a sunny future, is a great place to live year-round. The city is in the heart of Arizona's growth corridor between its major metropolitan areas, Phoenix and Tucson, yet it has an easy-going Southwestern lifestyle.

The city, with a rapidly developing economic base, is the largest in Pinal County, with a population of 16,000 and a retail trade area of 62,500 persons. Retail and service businesses are expanding quickly. The proximity of the metropolitan areas provides many additional

amenities within an hour's drive.

Casa Grande, located in the Upper Sonoran Desert of central Arizona, enjoys beautiful sunsets and sunrises. The city lies in the Casa Grande Valley, bounded by the Sacaton Mountains on the north and Picacho and Sawtooth mountains on the south, at an elevation of about 1,400 feet.

The climate allows year-round outdoor recreation, ranging from swimming, golf and tennis to hiking and picnicking. Recreation opportunities abound, with four golf courses (including a municipal course) in the area, fitness facilities, numerous tennis courts, two theatres, more than 2,000 acres of city parks, plenty of open spaces, and an ideal climate for enjoying the outdoors.

Casa Grande maintains 11 developed parks, two mountain parks and one regional park. Phase One of the regional park includes a nine-hole golf course, driving range and exercise trail available for public use. La Grande Pool, a 50-meter olympic-size facility, accommodates nearly 30,000 swimmers annually.

Outdoor living is part of the Casa Grande lifestyle. Residents enjoy barbecuing year-round. Swimming pools are found in many backyards. Outdoors is a great place to talk, relax and enjoy.

The community is also noted for its school system, including six public elementary schools, a junior high school, a high school and Catholic elementary school. Central Arizona College provides access to higher learning. The college also sponsors a slate of cultural events open to the public. Its Public Events Series offers quality entertainment at a fraction of the cost elsewhere. The 700-plus seat Don P. Pence Center for the Visual and Performing Arts houses a majority of the performances.

The City of Casa Grande welcomes the 1983 Air Race Classic.



Left to right (top row): CATHY HERROLD NICKOLAISEN, Timer; LIZ KRAMER, Timer; PAT MORELAND, Chief Timer; JUNE BONESTEEL, Stop Co-Chairman; (bottom row): LUCY ENOS, Stop Co-Chairman; WALT LEHMAN, FBO; RICK HOLLIDAY, Assistant to FBO; STACY HAMM, Assistant Timer.



El Paso, the largest city on the border between the United States and Mexico, is a port of entry, across the river from the Mexican city of Ciudad Juárez. Each year some 30 million border crossings are recorded.

The city's leading industry is apparel manufacturing. Smelting and refining are important. Other industries are petroleum refining, production of cement and other building materials, and food processing.

Fort Bliss, founded in 1848, now the headquarters of the Army Air Defense Center, and various military and aerospace installations contribute largely to the economy.

Thousands of acres in the area have been converted into irrigated farmland by waters from the Rio Grande impounded by the Elephant Butte and Caballo Lake reservoirs. The principal crops are cotton, alfalfa, onions, lettuce, chilies and pecans.

In 1827, Juan María Ponce de León built the first permanent settlement on El Paso's present site. Texas' war for independence and the Mexican war established the Rio Grande as the international boundary in 1846. It was not until 1849 that a real community developed on the American side of the river. In 1888, Paso del Norte was renamed in honor of Benito Juárez, defender of Mexico against the French.

The University of Texas at El Paso, a part of the University of Texas System, is in the city. The museum of Art has a Samuel A. Kress Collection of European Art and the Centennial Museum displays exhibits of natural history.

A city rich in history and culture, El Paso welcomes the Air Race Classic.



JAMES (Dick) METTLER
Airport Director



MICHELLE MILLER
Stop Chairman



LOIS HAILEY
Chief Timer



EVELYNE UNDERWOOD
Timer



RUTH DEERMAN
Timer



El Paso and Las Cruces 99 Members



El Paso Flight Service Station: Front Row - ENRIQUE CANALES, MEL SANCHEZ, TIM WHITE. Back Row - AL REY, BOB BOWEN, HELEN DAVIS AND ED BARBER



El Paso Tower - JACK HARDY, Chief (Facility Manager), JAN EARL, CHON SEPULVEDA, GEORGE MOORE, VERNON JOHNSON

WX: ARVIL CREACY

GADO: AL POSPISIL

LUBBOCK for all REASONS



It has been aptly said that for every good thing there is a reason. Lubbock is a good thing and there are many reasons.

A modern city of 180,000 happy people, Lubbock ranks eighth among Texas' 25 metropolitan areas in population, seventh in median family income and eleventh in manufacturing employment.

The South Plains region, which Lubbock is the center, produces about 30 percent of the annual U.S. cotton crop. This agricultural area economy is based on cotton, grain sorghum (supporting feedlots with capacity to fatten out one million head of prime beef), and endless expanses of wheat.

And then there's oil. Some 20 percent of the nation's crude oil comes from the area served by Lubbock, a region with nine oil refineries and 75 gasoline plants.

However, Lubbock is much more than its material wealth. Texas Tech University, with an enrollment of 23,000 is one of the leading universities of the southwest. The Memorial Civic Center is available both for convention and local events. There is Reese Air Force Base, a center for undergraduate pilot training. The city also has reserve units for the Navy, Air Force, Marine Corps, and the Army National Guard.

Recreational facilities comes in the name of Canyon Lakes Project, a string of five lakes, held at constant level and built in historic Yellowhouse Canyon of the Brazos River. They wind for ten miles through the city and vary in width from a couple hundred yards to a couple of miles. The Canyon Lakes Project encompasses the fabled MacKensie State Park, famous for its Prairie Dog Town, golf course, amusement park and picnic facilities.

"LUBBOCK for all REASONS" welcomes the Air Race Classic.



Lubbock 99s L to R Front Row: LINDA PETERSON, GEORGEANNA McKINNEY, JANE BARTOS, Back Row ANGELA BOREN, JANIE BAILEY.



Lubbock Airport: LEE HOLMES, Gado; DONOVON SCHARDT, Tower Chief; RICK WARD, FSS Technician; BUD NOLTENSMEYER, Gado; MARVIN COFFEE, Airport Manager.



Texas Air Center L to R: JERRELL GRIFFIN, Accountant; LARRY GRAHAM, Maintenance Supervisor; JACK NUDING, Sales Manager; RONNIE SAWYER, Line Chief; KING RHILEY, III, Executive Vice-President.



Wes-Tex Aircraft: DRAY ENGQUIST, Flight Instructor

HUTCHINSON

We invite you to come and share our city with us!

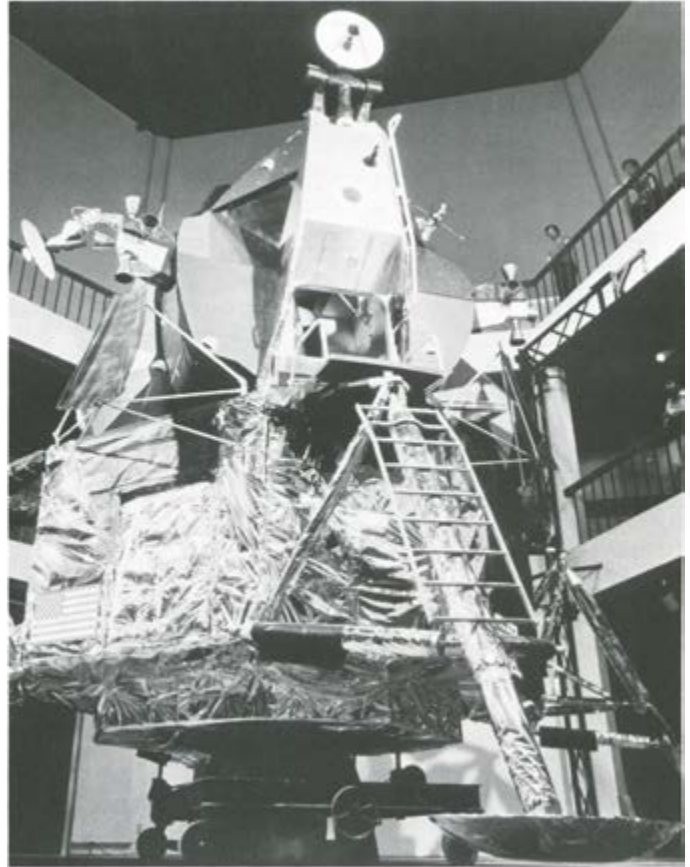
Hutchinson, the home of 42,000 hospitable Kansans, offers residents **and** visitors the best of both worlds: big city advantages, balanced by the agrarian tradition of a prairie town located in the "bread basket of the world."

Our city was founded in 1871, and is known as the "salt capital" because of the vast salt supplies located beneath the city. There are currently three evaporation plants and one mine in operation, producing salt to be sent nationwide. Agriculture also plays a very important role in Hutchinson's economy, with wheat being the number one crop in the area.

Accommodations for visitors are plentiful, with 775 motel rooms currently available. Entertainment and recreational opportunities abound in Hutchinson: from boating and skiing at a nearby reservoir to golf on one of our three challenging 18 hole courses; shopping in the well-appointed downtown core area, or in the outlying shopping centers; or attending the cultural events sponsored during the year by dedicated associations.

Hutchinson has two major attractions of wide appeal. Fun Valley is a 600 acre outdoor recreational complex, site of national level softball tournaments each summer. And over 200,000 people visit the Kansas Cosmosphere & Discovery Center each year, to view the finest collection of space artifacts in the Midwest.

Major events include the Kansas State Fair, held for 10 days each September; and the National Junior College Athletic Association's Mens Basketball Tournament each March.



World Famous Wheat Elevator — Airport in background.



BILL HAINES
General Manager
Wells Aircraft FBO



Helpers will be (L TO R): PAT WILSON,
DOROTHY BARKER, MARYBELLE BOYD.



CAROL LANNING
Stop Chairman



DEBBIE NICHOLS
Chief Timer



MARILEE WILSON
Line Office Manager
Wells Aircraft FBO



JAMES HEPHNER
Service Manager
Wells Aircraft FBO



Line boys in Hutchinson, Kansas



JACK SKELTON
Tower Chief

COLUMBIA

Mid-way between the northern plains and the southern Ozarks, Columbia stands at the heart of Missouri. Long known as a center of education, Columbia finally is being recognized as an exciting travel destination, too.

Founded in 1821, Columbia has enjoyed 161 years of growth and prosperity. The insurance industry and medical services have played their role, but much of that growth has been based on three institutions of higher learning. The University of Missouri-Columbia, founded in 1839 as the first state university west of the Mississippi, is the largest, along with Columbia College and Stephens College.

Today, athletic and cultural events, many connected with Columbia's colleges, have become major travel attractions. Mizzou Tiger football, concerts by internationally-known artists, plays - all these and much more are part of the Columbia experience.

Visitors to Columbia are delighted to find a city small enough to retain its hometown friendliness, yet large enough (over 65,000 people) to offer urban attractions.

Nineteen hotels and motels provide more than 1800 guest rooms. Some of the finest restaurants between Kansas City and St. Louis offer varied dining pleasures. Lively night spots and eight theaters ensure plenty to do after the sun goes down.

There are parks - more than 1500 acres in the city - and lovingly - preserved historic sites. There are art galleries and museums. And Columbia is mid-Missouri's marketplace, with a vibrant downtown area and large suburban shopping centers.

Columbia welcomes the Air Race Classic to experience our hospitality first hand.



Memorial Union
University of Missouri - Columbia



Old Schoolhouse
Shelter Gardens



Jesse Hall
University of Missouri - Columbia



Central Missouri Chapter 99s from L to R, Front: MARY ELLEN CRIPPEN, ROSE VAN DINE, JANET CALDWELL; back: MICHELLE DELA TORRE, LINDA MASHBURN, CAROL EDWARDS and LINDA DOORNBOS.



A. O. "PETE" CAPPADONY
Airport Manager



MARY LOU WRIGHT
Timer



NORMAN WHITE
Tower Chief



GLEN GOODMAN
FSS Chief



DEWEY JOBE
WX: Chief



NANCY DOBSON
Tower



GENE HOWSER
Tower



LOUISVILLE SKYLINE



CHURCHILL DOWNS

Louisville is located on the southern bank of the Ohio River in a broad river valley surrounded by a plateau and the knobs. The Metropolitan area population is near one million.

Louisville is perhaps best known for the Kentucky Derby, and yet Louisville is both a major mid-western industrial city (number one in the southeast and 20th in the U.S. in "Value added by manufacturer") and headquarters for numerous nationally known companies.

The Kentucky Fair and Exposition Center is one of the largest multi-purpose exposition buildings in the United States with thirty acres under one roof and paved parking for twelve thousand cars. It is used for trade shows, conventions and a variety of sports events.

Eleven Airlines serve Louisville's Standiford Field which is located ten to twelve minutes from downtown. Bowman Field, Louisville's home for the airlines through 1947 was first used as a landing strip in 1918. The airfield remains one of the busiest in the region with almost two hundred thousand annual landings and take-offs. Bowman Field operated by the Regional Airport Authority of Louisville and Jefferson County remains a unique mixture of the historical and the modern - and a vital element in the regions economic well being.

WELCOME AIR RACE CLASSIC TO THE CITY OF LOUISVILLE AND BOWMAN FIELD



ROGER HINSON
Tower Chief



FORREST PRIEST
Flight Service Chief



AMANDA KEMPTON
Asst. Airport Director



DOT ARNETT
Stop Chairman



KENTUCKY BLUE GRASS 99s



ALICE FAYE NOBLE
and
DIANE STAFFORD
Timers

GREATER GRAND RAPIDS • MICHIGAN

Grand Rapids, Michigan, moves into the final two decades of the twentieth century with a handsome new architectural face, an expanded economic base, a growing and sophisticated population, and a keen awareness of its ecological advantages.

Since its founding in 1826, Grand Rapids has stood as a bulwark of mid-America... growing, prosperous, conservative, yet forward-looking, economically stable, and proud of its informal slogan, "A good place to live."

The 1980s are seeing this western Michigan city and its metropolitan area emerge into something even more — an internationally recognized center for business and industry, providing leaders for commerce and the professions throughout the nation and the world, offering new and excellent facilities for the arts, sciences, and education, and standing at the gateway to those rich and expanding recreational facilities of northern Michigan that contribute so grandly to the good life.

In greater Grand Rapids, Michigan's second-largest metropolitan area, fact after fact and statistic after statistic present a healthy picture of continued growth, diversification, and a potential without limit, as the city brings together the three basics of economics — people, machinery, and materials.

We like it here, and we think you will too. Come and see... stay a while, maybe for the rest of your life.



Seen across the "water" are typically beautiful office and apartment buildings located in the community.



Don't miss the annual Tulip Festival in nearby Holland!



Cross-country skiing provides wintertime entertainment



Visitors can stop to pause and reflect at any one of many rest areas in the city.



As
diversified
as the people
it serves.

Serving the Grand Rapids Area Since 1887

Chamber of Commerce Bldg. • 17 Fountain Street, N.W.
Grand Rapids, Michigan 49503 • 616/459-7221

1983 Air Race Classic Participants

WELCOME TO THE FINISH LINE

KENT COUNTY INTERNATIONAL AIRPORT Grand Rapids, Michigan

The Kent County Aeronautics Board welcomes the participants in the 1983 Air Race Classic to its seventh and final stop—the Kent County International Airport serving the Greater Grand Rapids and West Michigan Area. We're happy to have you with us and hope you enjoy our ever-expanding and up-to-date airport facilities.

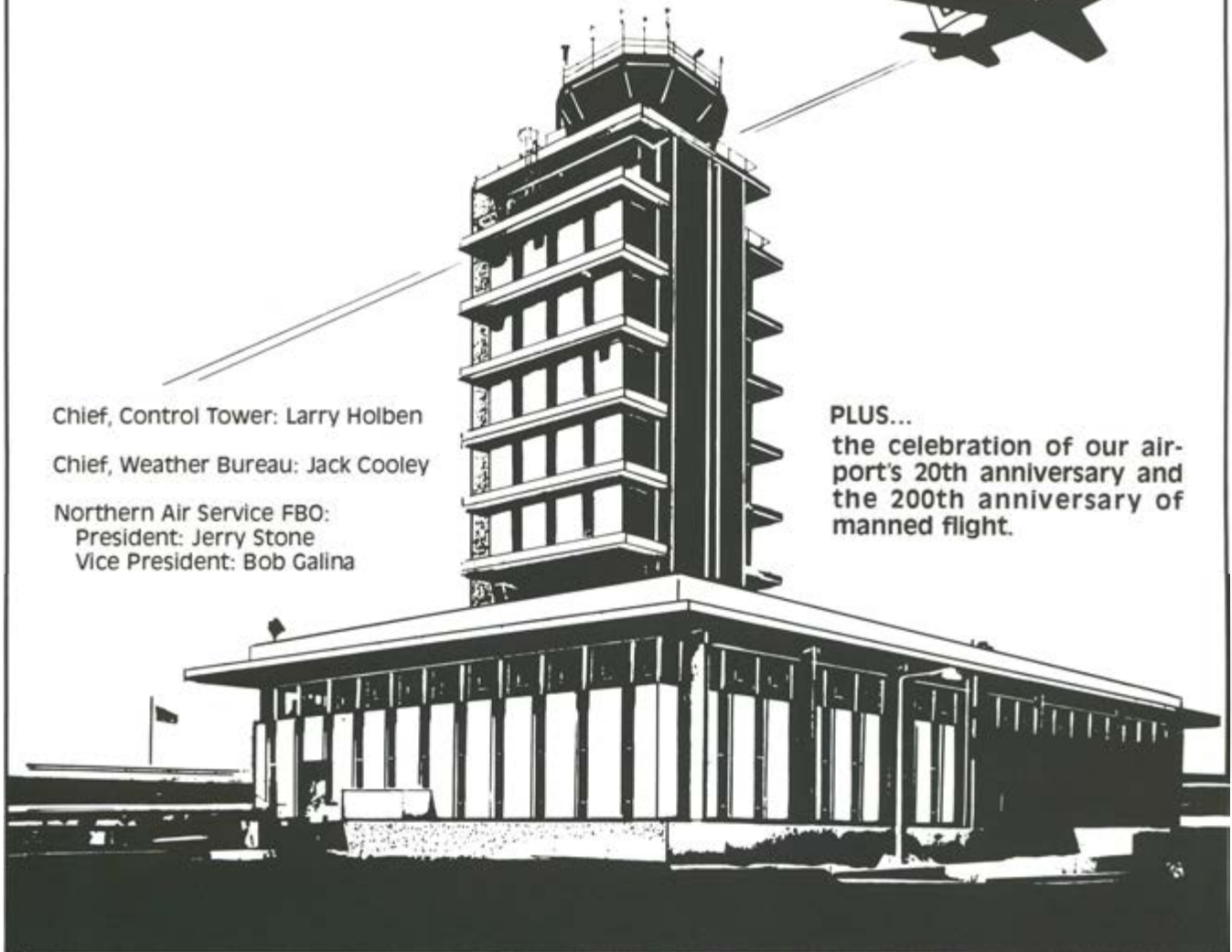


Chief, Control Tower: Larry Holben

Chief, Weather Bureau: Jack Cooley

Northern Air Service FBO:
President: Jerry Stone
Vice President: Bob Galina

PLUS...
the celebration of our airport's 20th anniversary and the 200th anniversary of manned flight.



DEPARTMENT OF AERONAUTICS

ROBERT M. ROSS, AAE
Director of Aeronautics

HAROLD K. PEDERSON, AAE
Ass't. Director—Facilities

ROBERT W. HIDLEY, JR.
Ass't. Director—Operations

KENT COUNTY AERONAUTICS BOARD

JOHN K. BOEREMA, *Chairman*
ANDREW DEKRAKER, *Vice Chairman*

JO SOMERVILLE

ROBERT W. SCHELLENBERG

JOHN VANLAAR

DONALD WIERENGA



KENT COUNTY INTERNATIONAL AIRPORT
5500 44th Street, S.E. • Grand Rapids, Michigan 49508

Air Race Classic 1983 Handicaps

MAKE/MODEL	FOOTNOTE #	HP	MPH	MAKE/MODEL	FOOTNOTE #	HP	MPH
AERO COMMANDER				Cardinal 177B (77-)	(5)	180	136
200 D		285	187	Cardinal 177B (75-76)	(5)	180	133
BEECHCRAFT				Cardinal 177B (70-74)	(5)	180	128
Duchess 76		360	174	Cardinal 177		150	117
Baron 55, C, D & E		570	220	Cardinal 177A		180	127
Baron A55 & B55		520	214	Cessna 172 RG Cutlass		180	144
Travel Air B95A-E95		360	183	Skyhawk R 172 XP (77-)		195	130
Bonanza P-35		260	179	Skyhawk 172N (77-)		160	117
Bonanza S-35		285	185	Skyhawk 172 (74-76)		150	115
Bonanza V-35, A & B		285	184	Skyhawk 172 (68-73)		150	112
Bonanza 36, A-36		285	183	(Eligible only with: Propeller Model # 1 C 160/CTM 7553 Part # C 161001-0305)			
Bonanza C-F 33 A		285	183	Skyhawk 172 (62-67)		145	110
Bonanza E-33C		285	189	Skylark 175		175	122
Bonanza G-33		225	177	GRUMMAN AMERICAN			
Bonanza B-F 33		225	166	Cougar G A-7		320	170
Sierra A-C 24R		200	141	Tiger AA5B		180	139
Super III Musketeer A23/24		200	130	Cheetah AA5A (76-)		150	127
Sundowner C-23		180	123	Traveler AA5A (75)		150	125
Musketeer A-23 II & III		165	120	Traveler AA5 (72-74)		150	118
Musketeer 23		160	117	MAULE			
Musketeer Sport A23-19, B-19		150	113	M-4 210C		210	135
BELLANCA				M-4 220C		220	137
Bellanca 14-19 A-C		260	167	M-5 235C		235	140
(without nosewheel doors)				M-5 180C		180	127
Super Viking 17-31		290	168	MOONEY (Also Aerostar)			
(Lycoming only)				M 201J (77-)		200	176
Super Viking 17-31		300	169	Ranger M20C		180	150
(Lycoming only)				Statesman M20G		180	148
Decathlon 8 KCAB		150	119	Chaparral M20E		200	161
Citabria 7 KCAB		150	119	Executive M20F		200	158
Citabria 7 GCBC		150	118	Master M20D		180	125
Citabria 7 GCAA		150	118	NAVION			
(Citabrias must be 40 gal.)				Navion G		260	162
(Bellanca Air Corp. only)				Navion H		285	175
CESSNA				Navion H (75-76)		285	179
Cessna 310 R (75-)		570	217	PIPER			
Cessna 310 G-Q		520	209	Super Cub PA-18	(1)	150	107
Skymaster 336		420	156	Cherokee PA-28-140		150	116
Skymaster 337 A-F		420	175	Cherokee PA-28-150		150	116
Skymaster 337G		420	181	Cherokee PA-28-160		160	117
Centurion 210 J		285	182	Cherokee PA-28-180		180	128
Centurion 210 G-H		285	181	Cherokee PA-28-235 (thru 77)	(4)	235	142
Centurion 210 F		285	176	Cherokee PA-28-235 (thru 77)	(5)	235	143
Centurion 210 D & E		285	177	Cherokee PA-28-235 (78)		235	150
Cessna 210 B & C		260	174	Cherokee PA-28-236 (79-) Dakota(4)		235	151
Cessna 205 & A		260	145	Warrior PA-28-151		150	117
Super Skylane P-206, B-E		285	151	Warrior PA-28-161		160	125
Super Skywagon U-206 & A		285	151	Warrior II PA-28-161 (78-)		160	126
Skywagon 185 A-E		260	149	Archer PA-28-181 (thru 76)		180	129
Skylane R-182 (78-)		235	162	Archer PA-28-181 (77-)		180	135
Skylane 182 Q (77-)		230	148	Arrow PA-28-180R		180	146
Skylane 182 P (75-76)		230	147	Arrow PA-28-200R		200	150
Skylane 182 P (72-74)		230	143	Arrow II PA-28-200R		200	151
Skylane 182 E-N		230	143	Arrow III PA-28-200R		200	153
Cessna 180 K		230	147	Comanche PA-24-180		180	147
Cessna 180 J		230	145	Comanche PA-24-250		250	172
Cessna 180 E-H		230	144	Comanche PA-24-260 & B & C		260	175
Cardinal RG 177 (77-)		200	155				
Cardinal RG 177 (74-76)		200	154				
Cardinal RG 177 (72-73)		200	151				
Cardinal RG 177 (71-)		200	150				

MAKE/MODEL	FOOTNOTE #	HP	MPH	MAKE/MODEL	FOOTNOTE #	HP	MPH
Comanche PA-24-400		400	200	Seneca PA-34		400	177
Cherokee 6 PA-32-260		260	144	Seminole PA-44-180 (79)		360	171
Cherokee 6 PA-32-260 (78-)		260	150				
Cherokee 6 PA-32-300		300	151	ROCKWELL COMMANDER			
Cherokee 6 PA-32-300 (78-)		300	158	Commander 114		260	169
Lance PA-32-300R		300	173	Commander 112 (72-73)		200	144
Lance II PA-32-300R (78)		300	172	Commander 112A (74-76)		200	146
Aztec PA-23-250 (-76)		500	194	Commander 112B (77-)		200	147
Aztec PA-23-250 (77-)		500	203				
Twin Comanche PA-30, B & CR		320	187	WING			
Twin Comanche PA-30 C		320	184	D-1 Derringer		320	190
Twin Comanche PA-39		320	188				

FOOTNOTES:

- (1) Fuel quantity may be doubtful.
- (2) Long range tanks do not raise handicaps.
- (3) Removal of Wheel fairings does not lower handicaps.
- (4) New type Piper fairings - increases handicaps 6 MPH.
- (5) Constant speed propeller.



DESIGNATED AIRPORTS ON THE ROUTE

AIRPORTS

STATUTE MILES

SEE Gillespie Field, El Cajon, (San Diego County), California	
**Calexico International Airport, Calexico, California	
CZG Municipal Airport, Casa Grande, Arizona	304.57
ELP International Airport, El Paso, Texas	323.68
LBB International Airport, Lubbock, Texas	294.61
HUT Municipal Airport, Hutchinson, Kansas	376.49
COU Columbia Regional Airport, Columbia, Missouri	309.67
LOU Bowman Field, Louisville, Kentucky	356.68
GRR Kent County International, Grand Rapids, Michigan	321.69
**FLY BY ONLY	

Total Statute Miles

2,287.39

Events

Impound Opens	June 20, 1983
Impound Closes	June 21, 1983 1600 PDT
Takeoff Banquet	June 22, 1983
Briefing	June 23, 1983
Takeoff	June 24, 1983 08:30 PDT
Finish Deadline	June 27, 1983 1700 EDT
Debriefing	June 28, 1983
Awards Banquet	June 29, 1983



ANNA KATE HIPPI
Greenville, SC

MERRY ROBERTSON
Greenville, SC



SUSAN MAULE
Moultrie, GA



GARY WHEELER
Greenville, SC

CLASSIC 1

Cessna 172M 150 hp

Sponsored by:
Hayne Hipp
(Insurance)
Bill Robertson
(Attorney)

Better luck this year Anna Kate and Merry!

This team has flown three Classics for sure - almost made the fourth in '82 . . . so winning is the uppermost thoughts. Anna Kate holds a Commercial with Instrument and 1350 hours. She and husband, Hayne, who is in insurance and also a pilot, have three children.

Merry is a part-time paralegal and court reporter . . . pilot/attorney husband and Merry are parents of four. Her log book says 780 hours with Instrument and Basic Ground Instructor . . . sure that the Foothills Chapter 99s value these outstanding members.

Thanks — Anna Kate and Merry for all your work on Air Race Classic!

★ ★ ★

A great big thank you . . .

Holiday Inn Baxters, Gainesville, GA
Hutchinson/Reno County Convention/Visitor Bureau
Sun Aviation Inc. and Vero Beach Airport Services
Cutter Beechcraft, El Paso

★ ★ ★

In appreciation:

Chester J. Borelli & Leo T. Zuckerman
Denver

CLASSIC 2

Maule M5 235 hp

Sponsored by:
Maule Aircraft Corp.
Moultrie, GA
Maule Flight, Inc.
Moultrie, GA
Jonco Industries, Inc.
Houston, TX

Flying her third Classic, Sue is the granddaughter of the manufacturer of the famous Maule Aircraft. She has acquired 710 hours — Commercial with single land/sea and Basic Ground Instructor. A student at Valdosta State College, a member of Deep South Chapter 99s — Sue has proven to be a real race competitor.

Teaming with Sue for a second time, Gary is a member of the Foothills Chapter 99s and past secretary to the Flying Nurses Association. With her single land/sea and Instrument, she has acquired 650 hours. A night charge nurse in Greenville Memorial Hospital — Gary is an outstanding "Mighty Mite" in both her profession and flying.

☆ ☆ ☆

Sincere appreciation to:

Jeppesen-Sanderson
Fallbrook Real Estate Co.
Thomasville-Holiday Inn

★ ★ ★

Sincere thanks to:

Hughes Aviation, Las Vegas
Volunteer Aviation of Knoxville

Great State.
Great People.
Great Bank.



Florida National Bank
At Vero Beach

1001 20th Place, Vero Beach 32960, (305) 562-8200
395 21st Street, Vero Beach 32960, (305) 562-8200

Member FDIC/©1983 Florida National Banks of Florida, Inc.



DODIE GANN
Friday Harbor, WA

ILOVENE POTTER
Federal Way, WA



MARIAN BANKS
San Diego, CA



GINI RICHARDSON
Yakima, WA

CLASSIC 3

Wing Derringer D-1 320 hp

*Sponsored by:
Red Mill Farm
Friday Harbor, WA*

"Whereas thy bug is set thou goeth"

Entering her fifth Classic, Dodie has logged 1200 hours with Commercial, single/multi land and Instrument. Husband, Ernest, is a rancher, author and pilot. A member of the Greater Seattle Chapter 99s, Dodie enjoys tennis, golf and air racing for companionship and competition.

Serving as president of Whirly Girl, Ilovene is a member of the Greater Seattle Chapter 99s. Her fourth classic, she has 5000 hours with Airline Transport, single/multi land, single sea, Flight Instructor, Airplane/Instrument/Helicopter and Ground Instructor Advanced/Instrument. Her hobbies, besides flying, are golf and seven grandchildren, (sometimes known as the sunshine of life).



CLASSIC 4

Cessna 172N 160 hp

*Sponsored by:
Richardson Aviation
Yakima Municipal Airport
Yakima, WA*

Since the age of 18, Gini has been a professional pilot having served as flight instructor, ferry charter, spray and airline (non-scheduled) pilot. She has logged 24,000 plus hours and has Airline Transport, single/multi land, single sea, Flight Instructor Airplane/Instrument/Glider, Commercial Helicopter, FAA Examiner, and three Ground Instructor ratings. She has a law degree (Juris Doctorate) and co-owner/operator with husband, Ralph of Richardson Aviation and Airway, Inc. Their daughter, Jill, is a pilot for Alaska Airlines flying 2nd officer on Boeing 727 aircraft. Gini's hobby of breeding and showing thoroughbred horses for hunting and jumping is shared with her family. This is the third Classic for Gini — member Intermountain 99s.

The gal with the pretty smile, Marian, is a member of the San Diego Chapter 99s, owner of Roller Skateland, mother of two (one son is a pilot) and grandmother of four. She has 3000 plus hours with Airline Transport, single/multi land, Flight Instructor/Instrument and Basic Ground Instructor. Marian was president of AWTARs for three years and this is the fifth Classic for Marian.

★ ★ ★

Sincere thanks to Ninety Nine Chapters:

Eastern Pennsylvania
Phoenix
Chicago Area
Florida Suncoast
Lubbock
Santa Clara Valley
Oklahoma
Palisades

Colorado
Kentucky Blue Grass
Tip of Texas
Lake Michigan
Michigan
Greater Detroit
Carolinas
Dallas Redbird



PATRICIA HYDE
Fayetteville, AR

MARGARET RINGENBERG
Grabill, IN



"TOOKIE" HENSLEY
Riverside, CA

JANICE HOFFMAN
Redlands, CA

CLASSIC 5
Mooney M20G 180 hp

Margaret has logged 29,999 plus hours with Commercial, single/multi land, Flight Instructor, Airplane/Instrument. A member of Indiana Chapter 99s, WASP, Silver Wings, Indiana Aviation Association, Summit Aero Club, Fort Wayne Aviation Association — she is married to Morris, Banker/Realtor. They have two children, daughter Marsha also pilot, and four grandchildren. Margaret has batted 100% for our Classic.

Patricia, the only pilot in family, is married to Robert, a writer and they have one child. She is a theatrical director, member of Arkansas Chapter 99s, Razorbacks Pilots Club and breeds Salukis and Yorkshire Terriers. With over 1200 hours in her log book, Patricia has Commercial, single/multi land, Flight Instructor Airplane/Instrument. '83 Classic makes four for Patricia.



In appreciation:

Los Angeles-Dodgertown-Vero Beach
Piper Aircraft Corporation
Spruce Creek, Daytona Beach
Redwood Empire Ice Arena-Snoopy's Flock
River Oaks Homes, Inc., Montgomery, AL

CLASSIC 6
Cessna 172M 150 hp

Sponsored by:
Fiesta Kampers & Trailers
American Trans Video of North Hollywood and
Inland California 99s and
The many friends and businesses
San Bernadino, CA

Tookie is a charter member of the Inland California Chapter 99s, having held all offices and currently serving as treasurer. With her Commercial and Instrument, 950 hours — is actively involved doing flying presentations at the schools and also Riverside Airport Booster. An avid tennis player, air racing is still her first love because of the new and adventurous opportunities it brings to her. Tookie's personal cheerleading group is lead by husband, Don, also pilot, and supported by their two children and four grandchildren.

Air racing is tops in Janice's list of interests with snow skiing a close second. Having logged 220 hours, she is currently serving as co-chairman of the Inland California Chapter 99s. She is a realtor for the Town Square Realtors in Redlands, CA. and has two children.

... this team has flown two prior Classics!

Holiday Inn

OPERATED BY MCKIBBON BROTHERS INC. UNDER LICENSE

Baxter's

HEADQUARTERS
1984
AIR RACE CLASSIC

726 BROAD ST. S.W.
GAINESVILLE, GEORGIA 30501
PHONE 404/536-4451



MELINDA LYON
Bel Air, CA

ELIZABETH DINAN
Bel Air, CA

CLASSIC 7
Cessna 182Q 235 hp

Elizabeth is a Flight Instructor at Claire Walters Flight Academy and a secretary for Santa Monica Propeller Service. She has Airline Transport, single/multi land, Flight Instructor Airplane/Instrument, Basic Ground Instructor with 3300 hours and two Classics — a member of the San Fernando Valley Chapter 99s, a recipient of Amelia Earhart scholarship and Woman Pilot of the year award. Her husband, Don, is with General Motors.

Look out Hutchinson — here comes Melinda. A former resident of this city, Melinda hopes all her relatives will be on hand to see her “fly by”! She has logged 325 hours, a member of the San Fernando Valley Chapter 99s, she is self-employed — flying her third Classic. Pilot husband, John, is great encouragement to Melinda’s flying career.

☆☆☆

Sincere thanks to:
Plantronics Inc.
Circus Circus of Las Vegas
Aero Propeller Inc.
Craig Transportation



KAY A. BRICK
Fallbrook, CA

PAM vander LINDEN
Fallbrook, CA

CLASSIC 8
Bellanca Viking 17-31A 300 hp

Sponsored by:
Fallbrook Real Estate Co.
Fallbrook, CA

Pam is a most popular lady in this Fallbrook vicinity. She is owner of Fallbrook Real Estate. She serves on the Aviation Commission of Chamber of Commerce, Board of Directors of Fallbrook Community Airport, member of National Real Estate Fliers and Bush Pilots Internations. Pam with 2879 hours has a Commercial with Instrument and pilot husband and rancher, Victor, have three children, nine grandchildren and two great-grandchildren. From the beginning our race has enjoyed Pam’s participation and contribution.

... Don’t know which of her accomplishments comes first, but here it goes! Kay is past president of International 99s, was chairman for thirteen years of the Powder Puff Derby, recipient FAI Paul Tissandier diploma, inducted into Aviation/Teterboro Hall of Fame of New Jersey, past International secretary of P-47 Pilots Association, winner of Noble Air Derby, listed in “Worlds Who’s Who of Women” and “Notable Americans of the Bicentennial Era”.

Best Wishes to PAM and KAY
from FALLBROOK, “AVOCADO CAPITAL OF THE WORLD”

Air Race Classic #8 is sponsored by FALLBROOK REAL ESTATE COMPANY, selling real estate since 1947. We specialize in avocado groves, retirement ranchettes, and acreage in beautiful northern San Diego County. Contact Pam vander Linden or Ian Forsyth.

FALLBROOK REAL ESTATE CO.
330 S. Main
Fallbrook, CA 92028
(619) 728-1143



For your vacations in Mexico, we offer condominiums and timeshares in:

PUERTA VALLARTA

KINO BAY, Sonora

SAN FELIPE, Baja Calif., Norte

Call Fallbrook Real Estate Co.
for reservations and further
information (619) 728-1143.



PAULINE GLASSON
Corpus Christi, TX

DONNA GOLDEN
Corpus Christi, TX



DIANE SHAW
Rio Grande, NJ



GENIE RAE O'KELLEY
Knoxville, TN

CLASSIC 9
Cessna 172N 160 hp

Pauline has flown all Classics—a member of Airport Advisory Board, Humane Society and Tip of Texas Chapter 99s. In her 34,000 hours she has acquired Commercial, single land/sea, multi land, Flight Instructor Airplane/Instrument, private Glider and Advanced/Instrument Ground Instructor. Husband, Claude, is retired from Aerial Photography and Pipeline Patrolling. His dream of sleeping late every morning has come true.

... say not a word against this program midst ear-shot of this team. Donna and husband, Jerry, also a pilot, own/operate Golden Banner Press which publishes the Air Race Classic program. They are parents of a daughter and son. Donna likes to travel and deserves the annual jaunt as soon as the programs are shipped. We appreciate you, Donna, and your marvelous crew at Golden Banner.

CLASSIC 10
Piper PA-28-151 150 hp

Sponsored by:
Volunteer Aviation of Knoxville, Inc.
McGee-Tyson Airport
Alcoa, TN
Cape Executive Aviation
Cape May County Airport
Rio Grande, NJ
Lindsay Ward Electronics Store
Knoxville, TN

Diane is a first officer of Alleghaney Commuter Reserve and has 2600 plus hours with Commercial, single/multi land and Instrument. President of Cape Executive Aviation and a member of the Golden State Chapter 99s, she has two children and is a proud new grandmother. This will make Diane's fifth Classic.

A member of the Tennessee Chapter 99s, Genie Rae is president and chief Flight Instructor of Volunteer Aviation of Knoxville, Inc. A Flight/Ground Instructor for the University of Tennessee, she has over 6000 hours with Commercial, single/multi land, Flight Instructor Airplane/Instrument and the three Ground Instructor ratings—Coming up is Genie's sixth Classic. She has applied some of this knowledge to paper and is co-author with William Kershner of the "Student Pilot Study Guide." Her husband is a chemist/pilot and they have two children and two grandchildren.



... you mean after 12 hours, there is one donut?



ESTHER LOWRY
Thomasville, GA



JUANITA HALSTEAD
Montgomery, AL



NANCY JAYNE PALOZOLA
Mill Valley, CA

MARION JAYNE
Palatine, IL

CLASSIC 11

Cessna R-182 235 hp

*Sponsored by:
River Oaks Homes, Inc.
(Builders of fine mobile homes)
Boaz, AL*

1983 Classic will make the seventh for Esther with husband, Carl, five children and six grandchildren — adding the five children, twelve grandchildren and four great-grandchildren of Juanita — what a cheering section! Esther is an Innkeeper, Holiday Inn, holds a Commercial, Instrument and Flight Instructor/Airplane with 4000 plus hours.

Welcome Juanita, to another Classic. With single/multi land and Instrument, Juanita has 2500 plus hours in her log — some of this with pilot husband, Foy, as back seat driver.

With Juanita from Alabama Chapter 99s and Esther the Deep South Chapter 99s . . . think an interpreter is in order up there in the North!



Good Luck!

Juanita and Esther

Compliments of River Oaks Homes, Inc.
Montgomery, Alabama

CLASSIC 12

Grumman American AA5B 180 hp

*Sponsored by:
Finefield Aviation
(Aircraft Maintenance)
Huntley, IL*

(Mother/daughter team!)

Marion is president of the Grand Prix Air Race and on Board of Directors of the Landings Airport Condominium Owners Association. She has flown six classics in her 3600 hours and acquired Airline Transport, single/multi land and Flight Instructor Airplane/Instrument. Marion has four children (two are pilots) and one grandchild. She is a business entrepreneur. She enjoys tennis, golf, horses, aviation and real estate. "Racing competition make me a better pilot" — member of Chicago Area 99s.

Nancy's 225 hours comes mostly from racing. Meeting the great people, which all pilots are, is exciting and rewarding. Nancy is Sales Manager for Wang Laboratories (sells computers). Husband, Jim, is president of Tel Assist. Corporation.



GRAND PRIX AIR RACE
Board of Directors



Wishing the Air Race Classic and Racers
BLUE SKIES & TAILWINDS

1918 W. Banbury Rd. • Palatine, Illinois 60067 • (312) 358-5100



ELLIE McCULLOUGH ODORICO
Vero Beach, FL



MARTHA PEARCE
Tempe, AZ



PEGGY WILLIAMS
San Rafael, CA

ELAINE BULL
San Francisco, CA

CLASSIC 13
Piper PA-28-140 150 hp

Ellie is an executive secretary to the city manager, Vero Beach. Florida Gulf Stream Chapter 99 member, she has 2700 plus hours with Commercial, Instrument, Private Glider and flying her second Classic. Louis, her husband, is a development engineer for Piper Aircraft Corporation and also a pilot. Ellie (smiling blonde) says racing makes her a better pilot and Schatzy (smiling Piper) more efficient.

A former U.S. Navy Nurse, Martie is employed by Arizona State University as a teacher - ground school courses. A member of Phoenix Chapter 99s — flying her fourth Classic — 3550 hours — Commercial, single/multi land, single sea, Flight Instructor Airplane/Instrument/Glider, Ground Instructor Advanced/Instrument, Martie feels racing improves her proficiency. Other interests and hobbies include reading and sports.

★ ★ ★

In appreciation:

- Marian Banks
- Shirley Lehr
- Broneta Evans
- Dorothy Niekamp
- Maisie Stears
- Pat Rowe

CLASSIC 14
Cessna 172RG 180 hp

Sponsored by:
C. C. Kemp, Inc.
(Aviation & Auto Repair)
Daly City, CA

This team hails from Santa Rosa Chapter 99s — start of our first Air Race Classic in 1977.

Peggy is employed by Vindor Aviation as secretary/bookkeeper and computer operator. Some ferry trips has helped to build 593 hours with Instrument. Her pilot husband, Roger, is a retired chemical engineer and they are parents of three children and one grandchild.

Elaine's Kitchen, a small catering business is owned/operated by Elaine. She is a former school teacher and her log book shows 196 hours. Husband, Peter, attorney/pilot, are parents of four children. We welcome this team to our race. Elaine — dare not print why you like to race!

☆ ☆ ☆

Sincere thanks to:
Pam vander Linden

**“Good Luck”
Classic 13**



Services

“Your Friend at the Factory”

**Sun Aviation, Inc.
Vero Beach Airport Services
Municipal Airport
Vero Beach, Florida**

Good Luck
ELLIE, MARTIE & SCHATZY



LOS ANGELES



PATRICIA GETTLE
Wichita, KS

JANET YODER
Wichita, KS

CLASSIC 15

Cessna 172K (XP) 195 hp

*Sponsored by:
Silvercreek Resort
Silvercreek, Colorado*

A corporation pilot for her sponsor, Pat has 2000 plus hours with Commercial, single/multi land, Flight Instructor Airplane/Instrument. Her pilot husband, Willard, is a Developer-Investor and they have three children, three grandchildren.

A self employed Certified Registered Nurse Anesthetist, Janet has acquired 315 hours with Commercial and Instrument. Her pilot husband, Donald, is a Podiatrist. A member of the International Flying Nurses Association, Stearman Restorers Association, Antique Airplane Association — Janet races for fun and flying.

This team hails from Kansas Chapter 99s. A warm welcome to your second Classic!



NANCY WALTERS
Royal Oak, MI

JUNE BEERS
Rochester, MI

CLASSIC 16

Piper PA 28-180 180 hp

A Classic first for June and Nancy — Welcome to the race!

June is employed as Benefits Manager — Health Care Benefits - Group Insurance — Relocation, etc. by General Dynamics Land Systems Division (Manufactures the M-1 Main Battle Tank for government). Husband, Robert, is Vice President in manufacturing. June's 750 hours says Commercial, single land/sea, Flight Instructor Airplane, Instrument rating and her three Ground Instructor ratings qualifies her to teach Ground School Adult Education Course.

Nancy is a legal secretary with Smith, Hirsch, Brody and Weingarden. Her husband, Ronald, is an engineer - tool designer with Chrysler Corporation and a pilot. They have three children. Nancy has added an Instrument rating to her 400 hours.

This team's part in the Michigan 99s is Treasurer and Ways and Means.

SilverCreek guests don't settle for less.

GOOD LUCK
to Pat Gettle and
Janet Yoder . . .
From SilverCreek!

Settle in for the night in Colorado's newest mountain resort community.

SILVERCREEK
COLORADO
BOX 4001 A
SILVERCREEK, COLORADO 80448
CALL OR WRITE FOR FULL COLOR BROCHURE (505) 887-3556
80 MILES WEST OF DENVER

☆☆☆

Sincere appreciation to:

- Florida National Bank, Vero Beach
- Embry Riddle, Bunnell, Florida
- Grand Prix Air Race
- Sun Country Tri-Cities, WA
- Aircraft Technical Publishers, San Francisco
- Monfort of Colorado, Greeley
- Silver Creek Resort, Colorado
- Chaparral Aviation, Texas
- C. L. Chandler, Atlanta
- Mapelli Meat Company
- Jean and Charles Schulz
- Marilyn Jack Savage
- Joyce Wells
- Sky Valley Resort
- Harriett and Harry Booth
- The Union Democrat
- Beech Aircraft Corporation



SHARON CRAWFORD
Redondo Beach, CA

MARIE HOEFER
Mission Viejo, CA



DOTTIE ANDERSON
Bluffton, OH

MARILYNN MILLER
Reynoldsburg, OH

CLASSIC 17

Cessna Cardinal 177B 180 hp

Sponsored by:
Lynn Cooter, Lynn's Aircraft Engines
(Engine repair and overhaul)
Long Beach, CA
Crawford Aviation
Torrence, CA
Rick Hoefer
Mission Viejo, CA

Sharon was chairman for two years of the Long Beach Chapter 99s and is flying her second Classic. . . . with Commercial and Instrument, 540 hours. Her husband, Don, is a pilot, Aeronautical engineer and author-publisher of the performance and design book titled "A Practical Guide to Aircraft Performance and Design." They have two children. Sharon is in her 13th year as a high school teacher and finds racing a way of keeping the skills sharp, meeting people — and besides "it feels so good when you have finished the race."

Marie has been flying for 21 years while raising four children and two foster children. She holds a Commercial with 700 hours. Her source of encouragement is her husband, Rick, a captain for United Airlines. Their 22 year old twins are also pilots. This is Marie's first Air Race Classic. She belongs to the Long Beach Chapter 99s, El Toro Flying Club, Cessna Skyhawk Association and the San Diego Aero-Space Museum Association. Marie works part time as assistant for the instrumental music director at Mission Viejo High School.

★ ★ ★

Thanks to:

- Brad Pearson
- Doug DuPerow
- Frances Brown
- Glenn Lanmon
- Glenn Buffington
- J. L. (Doc) Laird



CLASSIC 18

Piper PA-28-181 180 hp

Sponsored by:
Mike Cameron
(Generous loan of his airplane)
Lima, OH

A director of flight operation and chief Flight Instructor for Bluffton Flying Service, Inc. Dottie has acquired 29,500 hours with Commercial, FAA Examiner, single/multi land, Flight Instructor Airplane/Instrument and Advanced Ground Instructor. A member of the All-Ohio Chapter 99s, she is an Amateur Radio Enthusiast (W80VV), built her own airplane (Pitts Special), loves air racing and will be flying her fourth Classic.

Presently the International 99s Safety Chairman, Marilyn held all chapter offices in All-Ohio 99s and helped form Scioto Valley Chapter. Flying her fourth Classic with Dottie, Marilyn has 900 hours with Commercial, single/multi land, single/multi sea, Instrument and Glider. She is employed as Equipment Specialist with the Department of Defense for the U.S. Government. Pilot husband, Robert, and Marilyn have two children.

★ ★ ★

Sincere appreciation to:
Federal Aviation Administration
National Weather Service
Flight Service Stations
Federal Communications Commission

Greetings from Toledo, Ohio
Sponsor of
Air Race Classic Perpetual Trophy
DALE CRAIG



DR. BETTY KLEIN
Savannah, GA



CAROLYN PILAAR
Greenville, SC



MARIE E. McMILLAN
Las Vegas, NV

GLORIA MAY
Kerman, CA

CLASSIC 19
Cessna 172XP 195 hp

A retired college professor, Betty has 670 hours with Instrument. She is flying her third Classic — member of Deep South 99s — a cheering section of three children (one son a pilot) and two grandchildren — Betty is a travel counselor for the Ruth Marvin Travel Service.

We salute Carolyn, who is eligible for the US Proficiency Flight Team National Championship — was on the team '79 and '81 — on to Skien, Norway in '83? — Carolyn has acquired 14,000 hours, includes all Classics — Airline Transport, single land/sea, multi land, Flight Instructor Airplane/Instrument, Commercial Helicopter and Glider, all Ground Instructor ratings — and if you need help on the way — Carolyn can exercise her Airframe and Power Plant Mechanic License — Foothills Chapter 99s claim Carolyn.

CLASSIC 20
Beechcraft Bonanza F33A 285 hp

Sponsored by:
Isropia, Inc.
Investments
Las Vegas, NV

Entering her third Classic, Marie holds Commercial, single/multi land, Flight Instructor Airplane, Instrument rating, Glider and Basic Ground Instructor and has acquired 2380 hours. Twice recipient of the Amelia Earhart Medal, she was named Woman Pilot of the Year, 1976, in SW Section 99s. Marie holds 16 World and 16 National Aviation records and is a member of Las Vegas Chapter 99s and National Aeronautic Association. Vice president of Presidential Casino, she is married to a dentist/pilot, James, and they have four children and two grandchildren.

Welcome to Air Race Classic, Gloria. With her Instrument and 800 hours, she is secretary/treasurer to May Farm, Inc. Gloria is a member of the Fresno Chapter 99s and in the softball Hall of Fame for Women in both Oklahoma City and Fresno County. Vernon, a farmer/pilot and Gloria have one child.

Chaparral Country.

Welcome to Chaparral Aviation. Beechcraft Sales and Service. Chaparral Aviation offers full service facilities and a staff of top-notch aviation experts. And, if you're flying Beechcraft, we feature Beechcraft certified repair stations at all our locations.

Come visit us. You'll be sure of service with our special Texas-kind of pride.

- Large Aircraft Storage
- Complete Line Service
- Experienced Shop Service
- Parts and Accessories
- Flight Training/ Ground School
- Avionics Sales and Service
- Air Frame Maintenance and Overhaul
- FAA Approved Repair Stations
- 24-Hour Charter Service that gives you the freedom to go anywhere, anytime in a Beechcraft.



If you see this airmarker you are on next year's route!



FRAN BERA
San Diego, CA



BETTY FAUX
Long Beach, CA



DAYNA GWEN YARBOROUGH
Roanoke, TX

EDNA GARDNER WHYTE
Roanoke, TX

CLASSIC 21
Cessna 172N 160 hp

... betcha this is homecoming for Fran — having started flying in Michigan at age 16. Now 20,500 hours later holds an Airline Transport, single/multi land, single sea, Flight Instructor Airplane/Instrument, Commercial Helicopter/Instructor, Hot Air Balloon and a Skydiver with ten jumps. An FAA Examiner for 25 years, Fran licensed 3,000 pilots ... all those trophies say Fran has been most successful in air racing — altitude record — then add the name Fran Bera written into the Congressional Record in 'A salute to Women in Aerospace'. Presently, Fran is enjoying a successful career in aircraft sales at Beechcraft West, Van Nuys.

— Come on, Betty, be honest with us — wasn't that a lonely and apprehensive flight from San Francisco to Sidney, Australia in an Aztec ... Betty with Airline Transport — 12,000 hours, single/multi land, Flight Instructor Airplane/Instrument, FAA Examiner and the Ground Instructor ratings ... all this to operate her FBO business, AVCAL, on Compton Airport. Ouch! What a team and they hail from Long Beach Chapter 99s — Welcome aboard!



CLASSIC 22
Piper 28-180 180 hp

Sponsored by:
Jonco Industries, Inc.
(Matrix Aircraft Engine Treatment)
(Highly recommended by Classic 22
for all aircraft engines)
Houston, TX

In 57 years of flying — license 4013 — 30,230 hours — Edna has acquired Commercial single/multi land, single sea, Flight Instructor Airplane/Instrument, Rotorcraft, Helicopter, Glider and the three Ground Instructor — also, a past president of International 99s. She is now a member of Ft. Worth Chapter. Edna built, owns and operates the Aero Valley Airport and is still Chief Pilot. The many air races flown includes three Classics. This year her co-pilot is a former student.

Dayna, you fortunate gal, being co-pilot with such an experienced person, we welcome you to our race! Dayna is a member of Ft. Worth 99s — has acquired 74 hours and a part-time juvenile delinquent counselor. Husband pilot, Blake, Petroleum Land Manager — Oil & Gas Broker — have a two-year old child ... leaves no time for racquetball tournaments.



**Switch On The
Weather Channel
Before The Weather
Switches On You**



WELCOME TO CUTTER BEECHCRAFT

P. O. Box 26050 • El Paso, Texas 79926 • (915) 779-0270 • Unicom 122.95 • Airinc 128.875

We appreciate your business!



NORMA FUTTERMAN
Beverly Hills, CA

AILEEN PICKERING
Sherman Oaks, CA



NENA JO HEWETTE
Rancho Santa Fe, CA



MARY PEARSON
Valley Center, CA

CLASSIC 23

Beechcraft Bonanza A36 285 hp

Norma with 2625 hours has Commercial, single land/sea, multi land, Instrument, Glider, and Basic Ground Instructor. Married to a retired supermarket operator, Charles, they have two children (one son a pilot) and no grandchildren (at least that they know of!) Norma has flown all Classics and is a member of Los Angeles Chapter 99s. Many hobbies and interests — golf, tennis, photography, cooking, piano and latest fascination is — computer. In past has given many reasons for flying Classic. This year she made an additional one — “a dogged determination to win Air Race Classic someday and with my luck they will have run out of those crystal trophies when it gets to be my turn”! Norma — but if all your Kentucky relatives gather — you might not finish in time!

Aileen has flown four Classics — Commercial, single land/sea, 1978 hours, a member of Los Angeles Chapter 99s (past chapter chairman) she has been a realtor in California for 20 years. Won her golf club’s “Most Improved Golfer of 1982” award and was given an award by Golf Digest Magazine. However, says flying is still her number one hobby and loves to race because of the camaraderie among the people involved.

A great fun team!



“AIR CLASSIC” sired by Mr. King Air.

CLASSIC 24

Piper Arrow PA 28R 200 hp

Welcome to Air Race Classic, Nena Jo, member of Palomar Chapter 99s — with 446 hours, Commercial, Instrument and has made her initial skydive. A former American Airlines stewardess, former fashion model in USA and Europe, Nena Jo is currently a real estate broker and owner of Hewette Realty. Married to a structural engineer, James, they are attending law school. They are parents of three children and their spare time is devoted to daughter’s horse shows and son’s sports events.

Mary is owner of Executive Aviation Services with husband, Brad, a flight instructor and official starter for Air Race Classic. She has 13,000 hours with Commercial, single land/sea, multi land, Flight Instructor Airplane/Instrument, Basic Ground Instructor and FAA Examiner. Flying her third Classic, Mary is a charter member of the Palomar Chapter 99s and Tucson Chapter 99s — With all the hours spent in air — racing to Mary is like a “Busman’s Holiday”!



First day drawing — (L) MARIAN BANKS with Director ESTHER LOWRY



ALMA HINDS
Redding, CA

JOYCE WELLS
Larkspur, CA



VELDA KING MAPELLI
Las Vegas, NV

STEPHANIE D. MAPELLI
Palm Springs, CA

CLASSIC 25
Cessna R-182 235 hp

Alma — 16,500 hours — Commercial, single/multi land and Instrument is flying her sixth Classic. An ex WASP, she operated airport after World War II for twenty-five years. Retirement from business has afforded more time for interest in travel, three children and nine grandchildren.

Joyce has made all the Classics — with 1700 hours — Commercial and Instrument. Currently the SW Section 99s Vice Governor and a member of Bay Cities Chapter, she is employed by the Reed Union School District as a school nurse. Hobbies include gardening, square dancing, sewing and aviation — active in the community, she serves on the Board of Directors Marin Dental Care Foundation, Marin School Nurses Organization, Marin Symphony and is a member of her church choir. Husband Hal, pilot and manufacturers representative, and Joyce have four children and two grandsons. Racing to sharpen skills in pilotage — meet new people — sportsmanship and camaraderie involved — also feels this is a perfect occasion to share the “equal opportunity” of household executive with husband in her absence.

CLASSIC 26
Piper PA-260B 260 hp

Sponsored by:
Mapelli Meat Company
(Wholesale Meats)
Las Vegas, NV

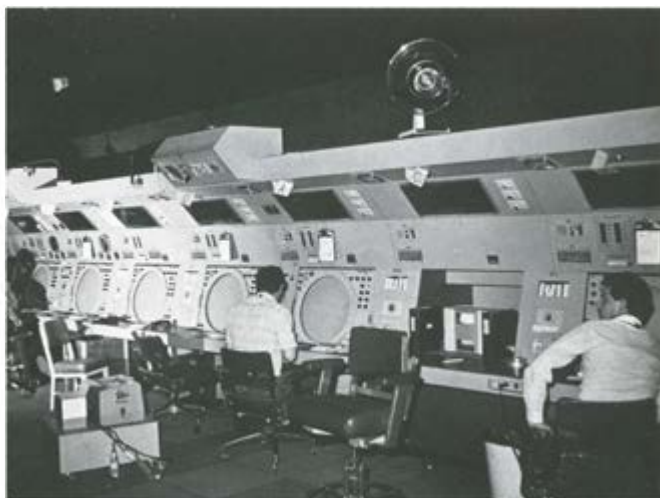
(Mother/daughter team!)

Multi engine land was added to the Commercial and Instrument since our last Classic — Velda’s hours totaling 3000 includes corporate pilot for Mapelli Meat Company, co-owned with pilot husband, Gene — both children are pilots — granddaughter future pilot? An opportunity to improve aeronautical skills, evaluate weather, learn personal and aircraft limitations and capabilities — this was proven in Velda’s five Classics. Velda’s 99s Chapter is of course, Las Vegas Valley.

Stephanie’s life has changed from being in graduate school at the University of Montana to Vice President - Manager of Mapelli Meat Company in Palm Springs. Pilot husband, David Silverman, is a Sales Manager — Who’s boss? Two Classics have helped to make up her 500 hours. Continue racing the Classic, Stephanie, we hope to provide new and interesting routes each year.



★ ★ ★
Thanks to:
Bob Stevens



I can't believe they are all gone!

Last Year I Prayed To Gods Of:

Wind — Safety — Fun

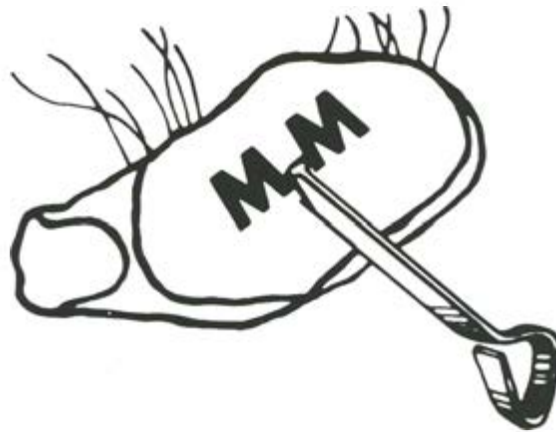
*To look with favor on all the Goddesses of the Classic
(Especially Velda and Stephanie)*

My prayers were answered (except for Velda and Stephanie)

This year I am adding Gods Of:

Horse Power — Speed — Luck

*If Stephanie and Velda do not win in 1983, I will invoke additional
Gods For 1984*



MAPELLI MEAT COMPANY, INC.

3111 So. Valley View Blvd.
Las Vegas, Nevada 89102
(702) 876-9000

DISTRIBUTORS OF:

MONFORT OF COLORADO
BEEF AND LAMB
PRODUCTS

BRAND OF DISTINCTION

VELDA K. MAPELLI, Secretary-Treasurer



LYNNE KAY ULICKI
Salinas, CA

JAYNE ANN OVERGARD
Pacific Grove, CA

CLASSIC 27
Cessna 172P 160 hp

Sponsored by:
Global Weather Dynamics, Inc.
(Private weather reporting service)
Monterey, CA
and
California International Airshow
(Community Charitable Organization)
Salinas, CA

... now we don't want you, Lynne Kay and Jayne Ann clearing yourselves to land. Lynne Kay is an Air Traffic Controller at the Monterey Peninsula Airport. A former Flight Instructor, she has acquired 650 hours, Commercial and Instrument and races for the thrill of competition, an avid snow skier, knitter and animal lover.

Friends at work and friends in flight, Jayne Ann, too, works as an Air Traffic Controller at Monterey Peninsula Airport and her log says 250 hours. A ranked tennis player for six years, she enjoys macramé, language and math, (her major in college and did tutoring).

Needless to say their boss is the FAA. Air Race Classic welcomes this unique team ...



SAMMY McKay
Grand Blanc, MI

PAULINE MALLARY
Fairburn, GA

CLASSIC 28
Cessna 210J 285 hp

Sponsored by:
Superior Pontiac Cadillac
(Auto Dealer)
Flint, MI

Sammy is a part of our race — having made all six so we can't say Sammy is just a housewife as much time is spent in racing and well done ... more than 3000 hours and Commercial. Sammy and dear "ole" dad, George, have one son and two grandchildren — hopefully future pilots. Michigan and Michigan 99s can be proud of their women pilots and this gal can be counted at the top of the list. Did you attend the school reunion in '82, Sammy?

Pauline was, prior to marriage, a full-time Flight Instructor, Charter Pilot and Office Manager at Michigan Flying Service, South Haven — so hopes to see again many familiar faces at Grand Rapids. A member of North Georgia 99s she has 3635 hours — Commercial, single land/sea, Flight Instructor Airplane and Instrument rating — Captain Peter Mallary, Eastern Airlines & Pauline have one child. This makes her fifth Classic.

Thomasville Unicom—
Cessna 4365 Hotel India,
arriving 20 minutes — please call
HOLIDAY INN for two
doubles and transportation



HOLIDAY INN, THOMASVILLE, GEORGIA



KAY CHAMBERLAIN
Mt. Pleasant, MI

MARY CREASON
Grand Haven, MI

CLASSIC 29

Grumman American AA5B 180 hp

Sponsored by:
The Aero Technology Co.
(Consulting/sales/flight instruction)
Grand Haven, MI
Land & Lake Aviation
(Sales)
Mt. Pleasant, MI

Welcome "Mare" & Kay to your first Air Race Classic!

"Mare," employed by the State of Michigan as an Aviation Specialist for the Bureau of Aeronautics, Michigan Department of Transportation; Editor, Safety & Education Coordinator, is married to a dentist and three of their four children are pilots. With Airline Transport, single/multi land, single sea, Flight Instructor Airplane/Instrument and all three Ground Instructor ratings "Mare" has accumulated 8050 hours. A member of Lake Michigan Chapter 99s, she enjoys teaching (one student at a time) if they express the desire to be safe pilots. Enjoys skiing with family and a world wide traveler, lectured on General Aviation in China in 1982 and is currently serving as president of the Michigan Aviation Association.

Kay with Commercial, single land/sea, Instrument, Glider — 2010 hours — member of Michigan Chapter 99s. She is interested in volunteer work, smocking, flying, church and presently works as Commissioner for the Michigan Aeronautics Commission. Her husband, Ray, is a medical doctor and they have 10 children (8 children in professions). Kay likes to take care of their nine grandchildren. She is running out of stories to tell them, so wants to fly Classic to "get more material."

☆☆☆

In appreciation:

Yellowstone Tour and Travel
Jonco Industries, Inc.
Morgan Stanford Aviation
Aero Associates
American Motor Inns, Inc.
Aeroprint (Bob & Hindy Westervelt)



PHYLLIS BAER
Mercer Island, WA

BONNIE EDSON
Bellevue, WA

CLASSIC 30

Beechcraft Bonanza V-35B 285 hp

Phyllis has 1200 hours — Commercial, single/multi land, Flight Instructor Airplane and Instrument rating — flying her fifth race. She is a member of Greater Seattle Chapter 99s, Manager of Flightcraft Aero Center, and enjoys tennis. Her husband, Charles, is a retired P.A.A. pilot and two of their four children are pilots. (Your kind words about our program — was our incentive to try again — thank you — Asst. Ed).

With single/multi land, single sea and Instrument, 300 hours, Bonnie will be flying her second Classic. Her husband, Orin, is a pilot and works for Bayliner Marine Corporation. Bonnie, a member of Greater Seattle Chapter 99s, is a curriculum consultant for local school districts — her hobbies include horses and golf.

☆☆☆☆☆☆☆☆☆☆☆☆☆☆☆☆☆☆☆☆☆☆☆☆☆☆☆☆☆☆

AIR RACE CLASSIC 1982

Flying west to east was your course this year,
with a thumbs up signal, your supporters gave a loud cheer.
Pushing full throttle as you left Sunriver,
your bird lifted off the runway without a quiver.
Tuning your radios as your charts fell from your lap,
you wished you had three arms, as you slid your seat back.
Clearing the rugged Rocky Mountain peaks was a real sight,
you start to relax as you continue your flight.
As you turn southeast in the distance is Yellowstone,
wouldn't it be great to win this race and surprise the folks
back home?
On to Nebraska the land begins to flatten out,
as you cross the Missouri, you let out a happy shout.
Its time to check that mixture as you lean it out,
make your plane perform at its best, that's what this race is all
about.
Back to the charts and radios as the hills begin to rise,
please, Mr. Weatherman, open up those beautiful blue skies.
Nestled in the mountains you spot Knoxville, your destination and
World's Fair,
its time to run thru your check list and straighten your hair.
Tonight its my pleasure to again join you at your Awards dinner,
when I present the Perpetual Trophy and we honor the
WINNER . . .

By Dale K. Craig
June 27, 1982



SUZY HENNEY
Palos Verdes Estates, CA

JEAN "SUNNY" SCHIFFMANN
Palos Verdes Estates, CA



MARY AIKINS
Wichita, KS

MARY ANN NOAH HAMILTON
Shawnee Mission, KS

CLASSIC 31
Cessna 172P 160 hp

Sunny and Suzy — Welcome to your first Air Race Classic!

Sunny — 5200 hours — Commercial, single land/sea, Flight Instructor Airplane/Instrument, and Basic Ground Instructor — member of Long Beach Chapter 99s. She is one of first women to work for FAA/CAA in Air Traffic Control and Communication and has been very active and awarded in various community service activities as well as starting a local Girl Scout troop for aviation badge. She was recipient in 1972 of the Amelia Earhart Memorial Scholarship. Sunny is employed by Southwest Skyways as flight instructor. Sunny and her husband, Charles, Aviation Counselor/FAA Designated Pilot Examiner, have four sons (one a pilot) and two grandchildren.

Suzy, a member of Long Beach Chapter 99s, is the Alumnae and Development Director of Marlborough School in Los Angeles and has two children. With her 275 hours and a former Cotton Bowl Princess, community volunteer, teacher, MBA student at Pepperdine University, she finds the stimulation of air racing to be a periodic necessity!

Sunny — Suzy — a sizzling team?

CLASSIC 32
PA 24-260C 260 hp

Mary Ann with five Classics behind her is introducing Mary to our race — this team dates far back racing together — they know how!

Mary Ann with Commercial, single/multi land, Instrument, Private Helicopter and Hot Air Balloon has acquired 5900 hours. She has four grandchildren and one of her three children is a pilot. Husband, Gordon, Jr., is a stockbroker. "Flying obviously my hobby — racing cuz I don't know when to quit — wonderful seeing old friends and making new ones." Happiness — making '82 finish line prior to deadline . . . Misery — flying timing line incorrectly — bit of poor visibility plus a bit of cockiness - eh?

For eight years Mary flew the Pitts Special in Competition Aerobatics and Air Shows — the sweet air of success when winning the National Championship . . . presently an FAA Examiner and Flight Instructor with 4900 hours — Airline Transport, single/multi land, Flight Instructor Airplane/Instrument, Commercial Glider and the three Ground Instructors. Mary has three children and two grandchildren. So with Mary Ann's four grandchildren and three children (one a pilot) they have us all beat for a cheering squad.

Kansas 99s boasts the membership of these two.



Welcome to our city!
offering our visitors . . .

- 775 Motel Rooms - economy to luxury
- 70 Eating Establishments - fast foods to steak houses
- Shopping Opportunities - downtown and outlying centers
- Numerous entertainment and sports facilities
- The Kansas Cosmosphere & Discovery Center - featuring the largest collection of space artifacts in the midwest, plus the OMNI-MAX projector in the Cosmosphere Theater.

CONVENTION & VISITORS BUREAU
309 North Main / Hutchinson, Kansas 67501 316 - 662-3391



THELMA CULL
Fair Oaks, CA

BARBARA GOETZ
Fair Oaks, CA



COLETTE MARIE DOBKOWSKI
Palm Springs, CA

PATRICIA ANN FARMER
Palm Springs, CA

CLASSIC 33

Piper PA-24-260 260 hp

*Sponsored by:
Goetz Equipment Co.
(Heavy Equipment Dealer)
Sacramento, CA*

Tack onto that Commercial: Helicopter, Instrument Flight Instructor/Airplane 1910 hours — now add Aircraft Power Plant Mechanic license then add International secretary of the 99s and again add owner/secretary/treasurer and corporate pilot for the sponsors — flown five Classics. Put it all together — it spells Barbara — Takes all twenty-four hours in a day, right?

O.W.T. (Thelma) is employed by San Juan school system. She has flown 4 Classics, a total of 550 hours and a good navigator. Pilot husband, Neil, is a computer programmer.

Sacramento Valley 99s likes members such as this team — Still need O.W.T. explained!

CLASSIC 34

Piper PA-32-300 300 hp

Air Race Classic welcomes this team, Colette and Pat, to their first race.

Colette, a flight instructor for ViAir, Inc. located on the Palm Springs Airport, holds her Commercial, Flight Instructor Airplane/Instrument and 500 hours. She has a masters degree in psychology and is a professional photographer. Colette has lived and flown in such exotic places as Hana, Maui, Hawaii and St. Croix, Virgin Islands.

Pat has 146 hours and is looking forward to her Instrument and Commercial ratings. Roger, her husband, owns and operates Performance Chemical and Supply and they have two children. Pat has given much of her time to the Jay Cee-ettes. All the new friends, experiences, and fun shared in the race will make the preplanning worth your time.

Thank you, Calexico!



Calexico Airport



BARBARA SMITH and ONNA KUBLER



Imperial So-Lo Ninety Nines: (L to R)
MARI HURLEY, BARBARA GAFNER,
SARAH TALBOT, PHYLLIS WEST-
COTT, PAT DRYE.



JIM McCONNELL
Airport Manager



ROGER KUBECK



JOAN McCOMBS
Lowell, MI

CHRISTINE WINZER
Grand Rapids, MI

CLASSIC 35
Cessna 172RG 180 hp

Sponsored by:
Grand Rapids, Michigan
Chamber of Commerce

Flying their first Air Race Classic — a warm welcome to Christine and Joan.

Chris has 6000 plus hours with Airline Transport, single/multi land, Flight Instructor Airplane/Instrument, Commercial Glider Instructor, and recipient of Amelia Earhart Scholarship Award in 1966. Chris is a member of Michigan Chapter 99s — She has been a FAA Inspector since 1973, and is currently the FAA Accident Prevention Specialist for the Grand Rapids, Michigan GADO. She has two children (both pilots) and two grandchildren. Chris is a ski, tennis and bike enthusiast.

Presently chairman of Lake Michigan Chapter 99s, Joan has 2500 hours with Commercial, single land/sea, Flight Instructor Airplane/Instrument and Basic Ground Instructor. She is a Flight Instructor for Grand Rapids School of the Bible and Music. Her husband, Clair, is director of Missionary Aviation and they have six children (two sons and two sons-in-law are pilots) and ten grandchildren . . . does this make up a private mission?



I didn't do it! I didn't do it! What is it I didn't do?



**Which way did they go?
How many of them were there?
How fast were they going?
I MUST find them!
I am their LEADER**

Things are
looking up in . . .
Tuolumne County

home of the
COLUMBIA FLY-IN
and

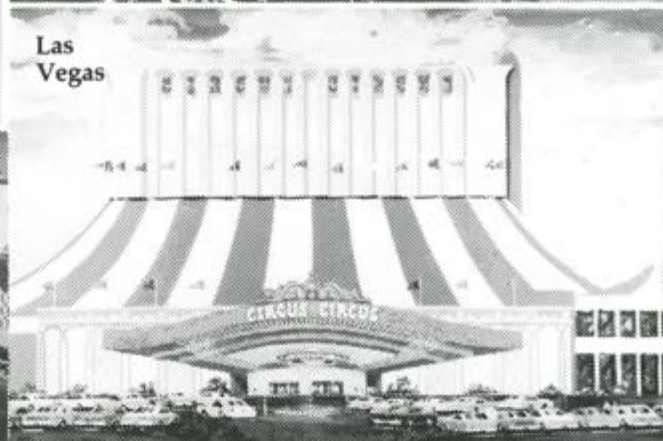
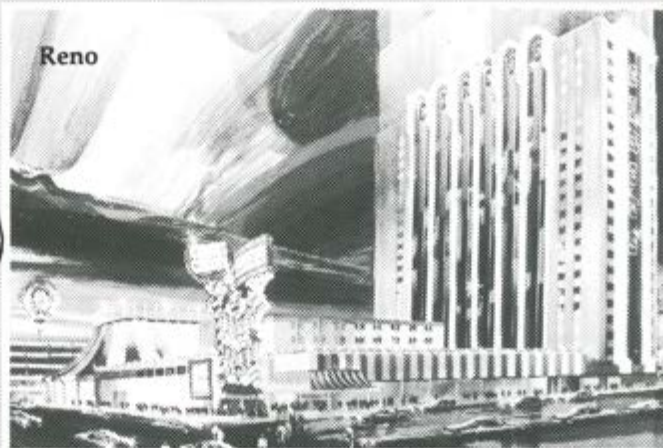
The Union & Democrat
EST. BY THE PEOPLE OF THE COUNTY

in the heart of
California's
gold
country



A Family Affair

Best Wishes
From Your
Flying Friends



IT'S MORE THAN JUST A CIRCUS!

CIRCUS CIRCUS HOTEL/CASINO — Dream became reality when Circus Circus opened its doors in 1968...an incredible casino-circus-midway complex in the heart of the Las Vegas Strip. 1,610 deluxe rooms and suites in twin 15-story towers and an adjacent five 3-story building complex. **CIRCUSLAND RV PARK** — pool, jacuzzi, saunas, 421 full-service hookups, convenience store, restrooms, showers, pet runs, and mini-bus service from the park to the hotel and casino. **SKY SHUTTLE** — linking the Wonderful Worlds of Circus Circus — Las Vegas. **AND IN RENO** — Circus Circus Hotel/Casino excitement awaits visitors of all ages, located in the center of downtown.

FREE CIRCUS ACTS
of World Famous Performers
11 AM to Midnight



Midway Games and
World's Largest Electronic
Games Arcade for
Kids of all Ages

CIRCUS CIRCUS

Las Vegas Room and RV Park Reservations
(702) 734-0410
or Toll Free from Utah, Calif., Oregon, Idaho and AZ
(800) 634-6833
All States (800) 634-3450

For Reno Reservations call
(702) 329-0711
or call Toll Free
(800) 648-5010

Best Wishes to participants
in the 1983 Air Race Classic
. . . Monfort of Colorado, Inc.
producers of quality beef and lamb products.



Monfort

*"Congratulations
To All The Competitors!"*



© 1958, 1965
United Features
Syndicate, Inc.

*FROM
SNOOPY &
HIS FLOCK*

SANTA ROSA, CALIFORNIA
1667 W. STEELE LANE, SANTA ROSA, CALIFORNIA 95401

You're Invited to

Sun Country

TRI-CITIES • STATE OF WASHINGTON
PASCO / KENNEWICK / RICHLAND

*Starting Point of the
1984 Air Race Classic*



The Tri-Cities is three separate cities — Pasco, Kennewick and Richland — that sit in an oasis where the Columbia, Snake and Yakima Rivers flow together. The area is on the edge of Washington state's inland desert and is warmed by year-round sun.

1984 marks the centennial for one of these cities — Pasco. And, the start of the Air Race Classic at the Tri-Cities Airport in Pasco in June, 1984, will be a part of the year-long centennial celebration.

Summer in the Tri-Cities is also the time of the annual community festival, the Tri-City Water Follies. Over 40 events, ranging from parades to pets, from art to airplanes to sporting events of all types, including the fastest racing boats in the world, unlimited hydroplanes, make up the community festival.

You're invited to enjoy the Tri-Cities — Sun Country.



Pasco Centennial Celebration

P.O. Box 550
Pasco, WA 99301
Phone: (509) 547-9755

“Good work, at reasonable rates, with minimum downtime. That’s why I take my Beechcraft to the Beechcraftsmen.”



“My Beechcraft Bonanza means a great deal to me. I use it a lot for both business and pleasure. So when it needs repairs or maintenance work, I want to make sure it gets fixed right and doesn’t spend any unnecessary time in the shop. That’s why I take it to the Beechcraftsmen.”

When your Beechcraft needs service or maintenance work, bring it to the Beechcraftsmen. You’ll find them at Beechcraft Quality Service Centers all across the United States.

They have all the right equipment, they’re trained, and they know what they’re doing. So they do things right. The first time. And that saves you a lot of time and bother.

The Beechcraftsmen also stock and use Genuine Beechcraft Parts. Parts that are manufactured to the same exacting standards as the originals to ensure reliability.

When you want your Beechcraft repaired right, repaired with minimum downtime, and repaired at a reasonable cost, take it to the people who know it best. The Beechcraftsmen.



 Member General Aviation Manufacturers Association



The Beechcraftsmen.

**Only at Beechcraft
Quality Service
Centers.**

AWARDS

FIRST PLACE

Air Race Classic award for Pilot and Co-Pilot and \$5,000.00 cash. Av Charts donated by Jeppesen-Sanderson. Perpetual Trophy donated by Toledo Area Chamber of Commerce.

SECOND PLACE

Air Race Classic award for Pilot and Co-Pilot and \$3,000.00 cash. Av Charts donated by Jeppesen-Sanderson.

THIRD PLACE

Air Race Classic award for Pilot and Co-Pilot and \$2,000.00 in cash.

FOURTH PLACE

Air Race Classic award for Pilot and Co-Pilot and \$1,500.00 cash.

FIFTH PLACE

Air Race Classic award for Pilot and Co-Pilot and \$950.00 cash.

SIXTH PLACE

Air Race Classic award for Pilot and Co-Pilot and \$700.00 cash.

SEVENTH PLACE

Air Race Classic award for Pilot and Co-Pilot and \$600.00 cash.

EIGHTH PLACE

Air Race Classic award for Pilot and Co-Pilot and \$500.00 cash.

NINTH PLACE

Air Race Classic award for Pilot and Co-Pilot and \$400.00 cash.

TENTH PLACE

Air Race Classic award for Pilot and Co-Pilot and \$350.00 cash.

BEECH AIRCRAFT AWARDS

\$1,500 if first place winner is flying a Beechcraft.

\$750 if a Beechcraft is second place winner.

\$500 if a Beechcraft is in the first ten to place, but not first or second.

\$100 each to the next four Beechcrafts placing in the race, but not necessarily in the first ten.

HIGHEST SCORE FOR FIRST TIME RACERS (not having used any weather service or consultant) Weather service for 1984 Air Race Classic (not transferable) by C. L. Chandler, Atlanta, Georgia.

THE MEATHEAD AWARD (lowest score)

By: Mapelli Meat Company, Las Vegas, Nevada

One box each: (eight boxes) Rib Eye, Porterhouse, New York Sirloin and Top Sirloin Steaks air freighted to Pilot and Co-Pilot.

TO THE TEAM WITH THE HIGHEST SCORE

(Pilot and Co-Pilot) over sixty years of age \$300 donated by Jean and Charles Schulz.

BEST SCORING CALIFORNIA TEAM (not in top ten): \$250 — Ruth Dilg Memorial Fund.

HIGHEST SCORE IN EACH CLASS OF AIRCRAFT OF WHICH THERE ARE AT LEAST THREE IN COMPETITION.

\$130.00 each: donated by Jean and Charles Schulz 145-179hp; 180-212hp; 213-252hp; 253-299hp; 300-570hp.



* LEG PRIZES

Leg #	From	To	Place	Award	Thanks to:
1	San Diego	Casa Grande	1	Head Set-Push to Talk and Leather Knee Board	Plantronics, Inc., Santa Cruz, CA Aircraft Technical Publishers, San Francisco Phoenix Chapter 99s Aeroprint, Boonton, NJ
			2	\$100.00	
			3	\$99.00	
			4	Two Art Prints	
2	Casa Grande	El Paso	1	One week stay	Sky Valley Resort Dillard, GA Aircraft Technical Publishers, San Francisco Chicago Area 99s Florida Suncoast 99s
			2	\$100.00	
			3	\$50.00	
			4	\$25.00	
3	El Paso	Lubbock	1	Set of Champion Spark Plugs	Aero Associates Jeffco Airport Broomfield, CO Aircraft Technical Publishers, San Francisco Lubbock Chapter 99s Aero Propeller Jefferson County Airport, Broomfield, CO
			2	\$100.00	
			3	\$50.00	
			4	Decorative Propeller Clock	
4	Lubbock	Hutchinson	1	Five days complimentary room	American Motor Inns NC, VA or TN Aircraft Technical Publishers, San Francisco Santa Clara Valley 99s Oklahoma Chapter 99s
			2	\$100.00	
			3	\$99.00	
			4	\$25.00	
5	Hutchinson	Columbia	1	Four nights accommodations Prime-rib dinner Snowmobile for three days Complete snowmobile clothing Guide Service as needed	Yellowstone Tour and Travel-West Yellowstone Aircraft Technical Publishers, San Francisco Colorado Chapter 99s Palisades Chapter 99s
			2	\$100.00	
			3	\$99.00	
			4	\$25.00	
6	Columbia	Louisville	1	Matrix Aircraft Piston Engine treatment	Jonco Industries, Inc. Houston, Texas Aircraft Technical Publisher, San Francisco Volunteer Aviation of Knoxville Morgan Stanford Aviation Berkeley, CA
			2	\$100.00	
			3	\$100.00	
			4	Set of THERMACON Heat Screens	
7	Louisville	Grand Rapids	1	Telex 5x5 Mark 2A Boom Microphone Head Set	Hughes Aviation of Las Vegas Aircraft Technical Publishers, San Francisco Lake Michigan, Greater Detroit and Michigan 99s Kentucky Blue Grass Chapter 99s
			2	\$100.00	
			3	\$75.00	
			4	\$50.00	

*Teams placing in top ten not eligible for leg prizes



MAINTENANCE

ATP has it all
on microfiche

Give us a call
800 227-4610



Aircraft Technical Publishers
101 South Hill Drive
Brisbane, California 94005
(415) 468-1705 Telex 171048

Jerome C. Draper, Jr., Chairman
William L. Daniels, President
Caroline D. Bonner, Executive Vice-President

Anything He Can Do, You Can Do Better!

By today's standards, it's amazing that for so many years scores of challenging and exciting career fields were closed to all but the most aggressive and exceptional of women. In fact, it's more than amazing; it's tragic.

Fortunately, such narrow-mindedness was not universal. For nearly six decades, Embry-Riddle Aeronautical University has prepared responsible men and women for the aviation careers of tomorrow.

Modern campuses in Daytona Beach, Florida and Prescott, Arizona offer outstanding flying conditions year round.

Advanced flight simulators and fleets of single and twin engine aircraft are available, supplemented by ground



training unsurpassed in the field.

If you'd rather keep both feet on the ground, however, there's still no need to miss out. There's much more than Flight offered at Embry-Riddle. Associate and Bachelor degree programs also lead to opportunities in Aeronautical Engineering, Computer Science, Aviation Maintenance, Aviation Electronics (Avionics), and Business/Administration.

Whichever program of study you choose, you'll learn from a faculty with impressive academic credentials, as well as many years of practical hands-on experience



in every facet of the aviation industry. State-of-the-art facilities and equipment will prepare you for situations and problems normally encountered during the course of an aviation professional's working day.

Embry-Riddle is the world's only fully accredited and totally aviation-oriented university. Aviation industry leaders have come to regard an Embry-Riddle diploma as syn-

onymous with the highest of professional and educational standards.

Opportunities for women in modern aviation have never been better. A challenging and exciting career can be yours! Let Embry-Riddle show you how.

To learn more about how to get started, fill out the coupon below and send it in today. Or call us toll-free at 1-800-874-9912; in Florida, 1-800-432-2376.

©1983 Embry-Riddle Aeronautical University

Please send me more information about E-RAU.

Name _____

Address _____

City _____

State _____ Zip _____

Soc. Sec. No. _____

Phone () _____



**Embry-Riddle
Aeronautical University**

Department of Admissions
Box 540
Bunnell, FL 32010

Embry-Riddle Aeronautical University adheres to the principle of equal education and employment opportunity without regard to race, handicap, sex, color, creed or national origin. This policy extends to all programs and activities involving or supported by the University.

5L

Preparing You Today For Tomorrow's Aviation Careers.

**1984
AIR RACE CLASSIC
starts in
Pasco, Washington
June 27th
and terminates
Gainesville, Georgia
June 30th**



1984 Honorary Starter

Robert A. "Bob" Hoover is one of America's foremost pilots and flies the F-51 Mustang and the Shrike Commander business and utility aircraft in demonstration of skill and precision at air fairs and shows throughout the world. A graduate of both Air Force and Navy Test Pilot schools, Bob had a combat tour flying Spitfires during World War II. He was awarded the Distinguished Flying Cross, the Soldier's Medal, Air Medal and the Purple Heart.

**HARTZELL, MCCAULEY,
AND SENSENICH SPECIALISTS**

Propeller Distributors for Hartzell & Sensenich
We stock for All Popular Models

Extensive Exchange Program

We Export  Worldwide

Facility at Jefferson County Airport
for Prompt Removal, Installation

Open Saturday 10 a.m. — 4 p.m. Daily Until 8 p.m.
Airport Delivery and Pickup



W. 120th Ave. & Kipling St.
Broomfield, Colorado 80020
TELEX 454326 SAMARAS DVR
Phone (303) 469-1749

Jefferson County Airport
Sue Houston,
Owner/Manager
Out-of-State (800) 525-8756

**Full-Support
Aircraft
Service**

**With a
WINNER**

AERO ASSOCIATES

Hangar B4A
Jeffco Airport • Broomfield, Colo. 80020
303-466-1961



AIR RACE CLASSIC WINNERS

1977

Marlon Jayne, Nancy Jayne — Joyce Wells — Luana Davis — Norma Futterman, Virginia Showers — Esther Wright, Judy Hall — Pat Jetton, Elinor Johnson — All Sharp — Jean Rose, Janice Free — Pat Gatlin, Pat Friedman — Velda Mapelli, Stephanie Mapelli.

1978

Sophia Payton, Helen Davison — Dot Etheridge, Dot Wilson — Pat Jetton, Elinor Johnson — Helen McGee, Norma Draper — Sammy McKay, Winnie DuPerow — Marlon Jayne, Patricia Keefer — Helen Wilke, Kathy Long — Barbara Goetz, Thelma Cull — Joyce Wells, Alma Hinds — Susan Adler, Mary Santosuosso.

1979

Marlon Jayne, Nancy Jayne — Margaret Ringenberg, Pat Wilson — Claire Walters, Eleanor Ruby Moore — Virginia Wegener, Lynn Carey — Tanya Cunningham, Caroline Ann Morey — Joan Paynter, Shirley Tanner — Dot Etheridge, Dot Wilson — Joyce Wells, Alma Hinds — Sophia Payton, Helen Davison — Jan Gammell, Ilovene Potter.

1980

Pat Jetton, Elinor Johnson — Sammy McKay, Marian Banks — Dot Etheridge — Marlon Jayne, Patricia Keefer — Dottie Anderson, Marlynn Miller — All Sharp, Berni Stevenson — Alma Hinds, Joyce Wells — Suzanne Jablonski, Barbara Persons — Carolyn Pilaar, Gary Wheeler — Sophia Payton, Sherry Harper.

1981

Juanita Blumberg, Bonnie Quenzler — Edna Gardner Whyte, Patricia Hyde — Sammy McKay, Pauline Mallary — Marlon Jayne, Nancy Palozola — Dottie Anderson, Marlynn Miller — Pat Jetton, Elinor Johnson — Esther Lowry, Betty Klein — Margaret Ringenberg, Janet Williamson — Sophia Payton, Helen Davison — Barbara Goetz, Thelma Cull.

The 1983 AIR RACE CLASSIC

**To all the people at all the stops
along the way . . . we think you are tops!**

**Directors and Participants
would like to especially thank the people of
San Diego and Grand Rapids
for all of their efforts to make the beginning
and end of the race so special for us this year!**

SIXTH AIR RACE CLASSIC WINNERS — 1982



Maybelle Fletcher

Mary Byers



Martie Pearce



Pauline Glasson

Sue Gray



Margaret Ringenberg

Wilma Ashe



Bonnie Quenzler

Shirley Zillig



Nancy Palozola

Marion P. Jayne



Caroline Pilaar

Caroline Grubbs



Pat Jetton

Elinor Johnson



Susan Maule

Gary Wheeler



Dot Etheridge

THE PIPER SARATOGA WIDE-BODIES. MORE ROOM FOR YOU; MORE ROOM FOR YOUR CARGO.



Of the four Piper Saratogas, the Turbo Saratoga fixed-gear is a perfect case in point.

It will outfly and outcarry every other airplane in its class.

Yet we don't believe performance alone is reason enough to buy it.

Which is why we'd like to talk to you about sitting.

WHY A FEW EXTRA INCHES IN THE CABIN ARE MORE VALUABLE THAN A FEW EXTRA KNOTS ON THE AIRSPEED INDICATOR.

As it happens, sitting is all there is to do nearly 90% of the time you spend in the air on an average flight.

If you're going to do your sitting in a cramped airplane, it's going to be a bad flight.

It's as simple and as logical as that.

Additional speed is not going to solve this problem.

Because, even in our competitor's fastest retractable gear, turbo-charged, six-place single—one with a 214-knot maximum speed—a 500-mile trip takes only *thirteen*

minutes less than it does in an airplane like the Turbo Saratoga SP.

Which is what led the designers and engineers at Piper Aircraft to a somewhat startling conclusion:

What is lacking most in six-place, single-engine airplanes today isn't speed.

It's room.

THE PIPER SARATOGAS. SIX-PLACE SINGLES THAT SHOULD EMBARRASS A FEW TWINS.

The Saratoga fixed-gear, the Turbo Saratoga fixed-gear, the Saratoga SP retractable and the Turbo Saratoga SP retractable are, simply stated, four of the roomiest and most comfortable single-engine airplanes you can buy.

From one side of the Saratoga interior to the other is a distance of over 48 inches.

More interior width than 31 singles, 11 twins, even as wide as one executive propjet.

When you think about it, it becomes more realistic to compare the interiors of the Saratogas to the interiors of airplanes like the Seneca III, the Navajo and the

Cheyennes.

And not just because of room. Consider, also, the Saratogas' optional air conditioning, conference seating, refreshment console and interior finish worthy of the finest business airplanes.



Not to mention such practical advantages as the Saratogas' shorter take-off distance over a 50-ft. obstacle and big rear loading doors.

Of course, none of this is going to get you where you're going any faster than the competition.

It will only seem that way.



Piper Aircraft Corporation, Vero Beach, FL 32960

1983 RACE ROUTE



JUNE 24 — 27, 1983
2287.39 STATUTE MILES

1977 RACE ROUTE



1982 RACE ROUTE



1978 RACE ROUTE



1979 RACE ROUTE



1980 RACE ROUTE



1981 RACE ROUTE

