

Hughes Airwest

Air Race Classic



**Santa Monica, California
to Milwaukee, Wisconsin.**

June 16-June 19, 1979

Commemorative Program
50th Anniversary of Women in Air Racing

Be there. Behind the wheel of a classic.

Business takes place wherever there's a decision to be made, wherever currency changes hands. And that can be in some pretty out-of-the-way places. But no matter where or when business happens there's often no substitute for a personal, face-to-face encounter.

To do that you have to be there.

For many companies and individuals, owning an airplane is the most effective way to get things done.

Is a company airplane right for you?

One face-to-face encounter with the classic Beechcraft Bonanza will convince you.

Because sitting behind the wheel of a legendary airplane like the Bonanza is as close to experiencing perfection as you're likely to get. After 32 years of continuous refinement, the Bonanza is still the airplane of the future. It's still the one to beat.

And with a top speed of 209 mph, a quietly elegant cabin and renowned Beechcraft quality, beating it is going to be hard to do.

Isn't it about time you got behind the controls of the world's most celebrated airplane? Fly a Beechcraft Bonanza, today. And be there.

Send for your free aviation kit.

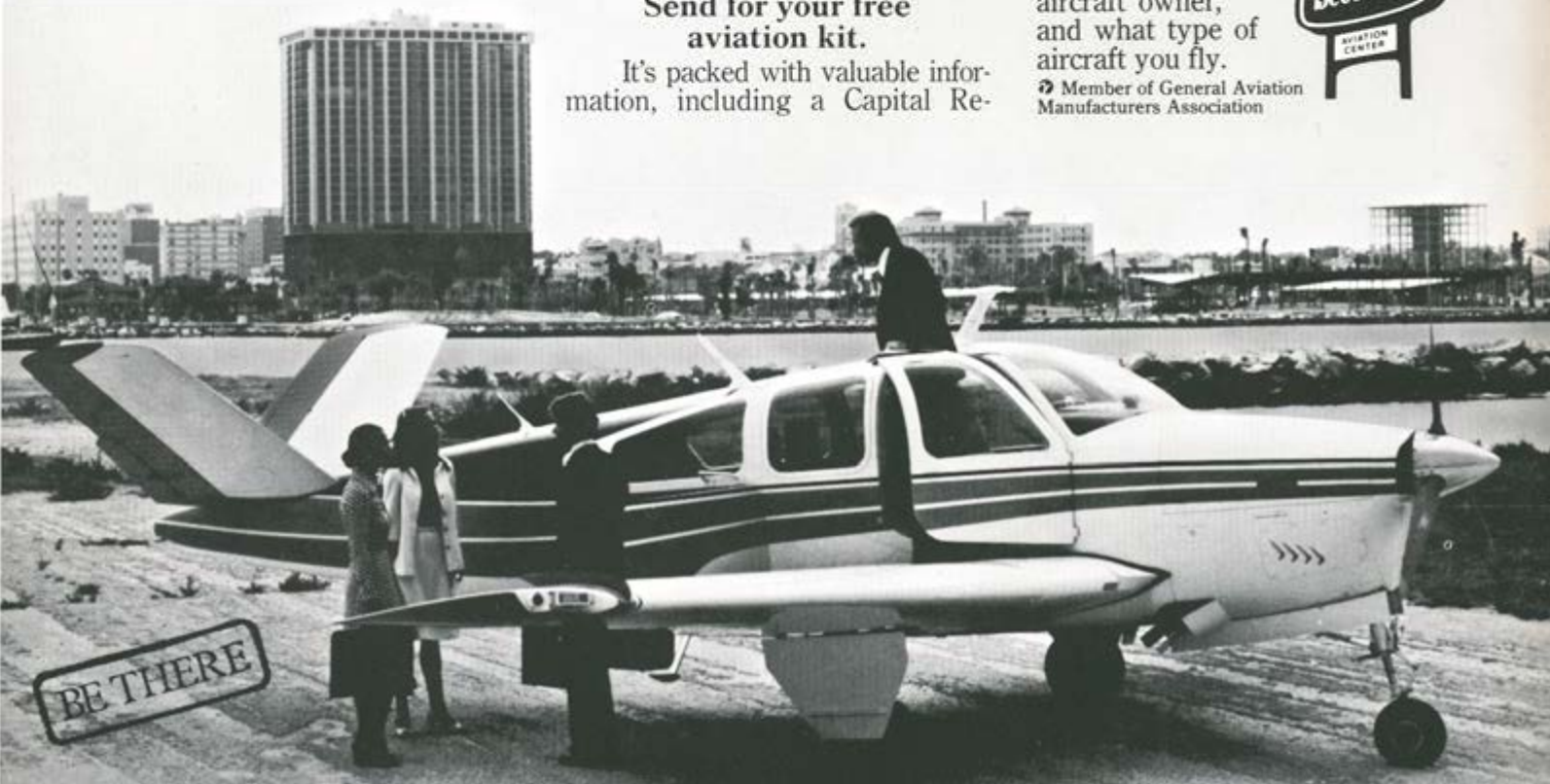
It's packed with valuable information, including a Capital Re-

covery Guide to help you determine the remarkably low net capital cost of acquiring a Beechcraft Bonanza.



Simply write on your company letterhead to: Beech Aircraft Corporation, Dept. J-27, Wichita, Kansas 67201. And please mention if you're already a pilot, an aircraft owner, and what type of aircraft you fly.

Member of General Aviation Manufacturers Association



Know any friends who want to learn to fly? Tell them about the General Aviation Manufacturers Association **Take Off** Sweepstakes. They could win a \$50,000 airplane just for earning their private pilot license. Have them call TOLL FREE, 24 hours a day, any day and ask for the BEECH "TAKEOFF" operator: USA 800-447-4700 (in Illinois, 800-322-4400); Canada 800-261-6362 (Toronto, 445-2231).

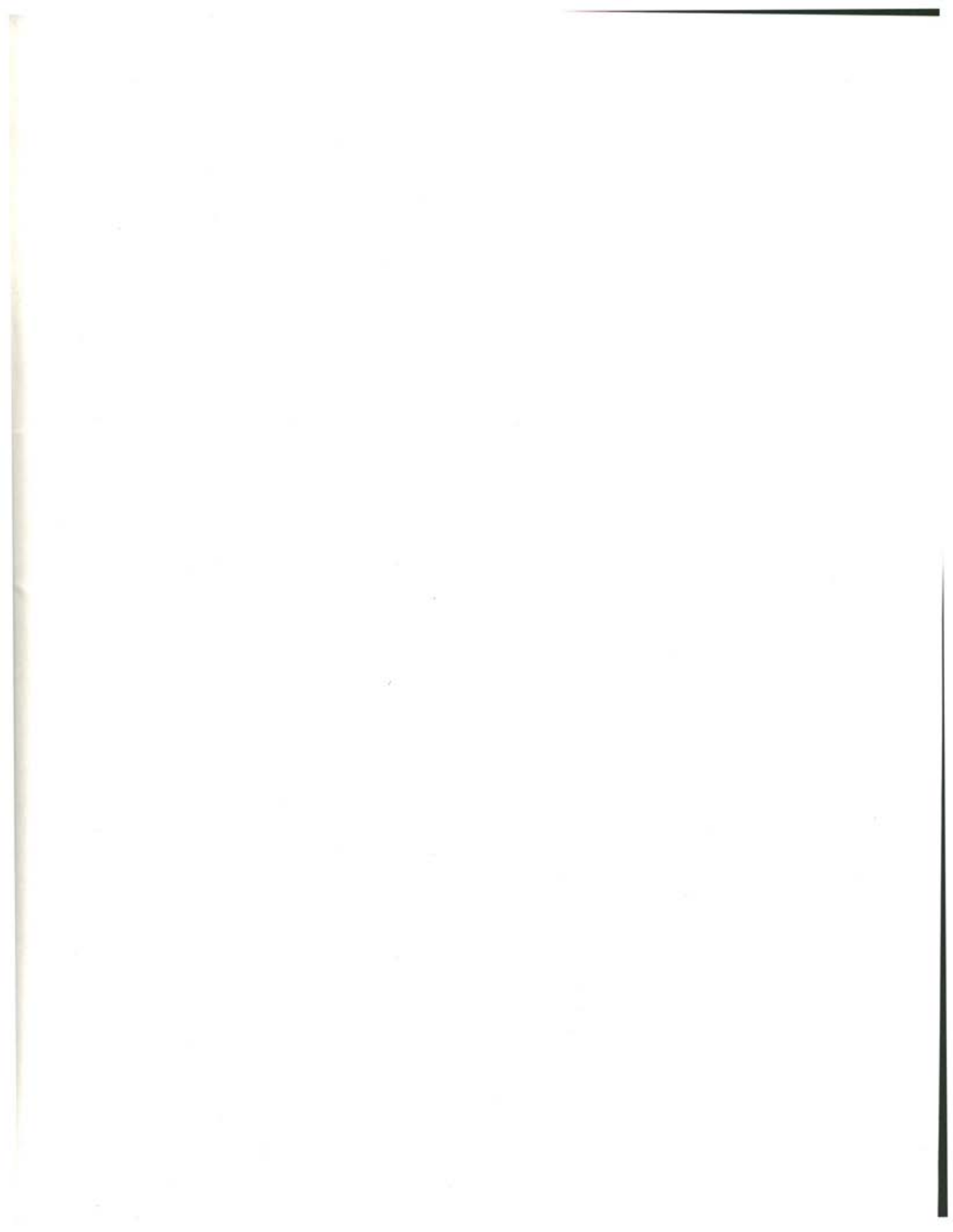
HUGHES AIRWEST AIR RACE CLASSIC

2386 PALOMAR AIRPORT ROAD
CARLSBAD, CALIFORNIA 92008

PROGRAM CHAIRMAN..... ESTHER WRIGHT LOWRY
EDITOR..... WANDA CUMMINGS
PUBLISHER..... PONDERS, Thomasville, GA

INDEX

	Page
FROM THE HUGHES AIRWEST PRESIDENT	4
CONTESTANTS	23-44
Alphabetical listing	3
50 YEARS AGO	8, 9
ARC BOARD OF DIRECTORS	6, 7
FIRST DAY DRAWING	14
STARTERS	11
THE ROUTE	14, 18-21
SPECIAL PEOPLE AND THANKS	10, 15, 16
AWARDS AND PRIZES	5
HANDICAPS	12, 13
GLOSSARY	9
1978 TERMINUS	16



CONTESTANTS

CLASSIC #		CLASSIC #	
40	ADLER, SUSAN	7	McGUIRE, EMMA
16	ANDERSON, MERIEM	62	McKAY, SAMMY
47	BEAR, PHYLLIS	36	McMILLAN, MARIE
9	BERSON, SHIRLEY	28	MALLARY, PAULINE
9	BLECH, LORRIE	6	MAPELLI, VELDA
57	BLUMBERG, JUANITA	55	MARTIN, TERESA
61	BOREN, ANGELA	44	MAYO, ELLEN
20	CAINE, JENNIFER	7	MINTER, DORIS
34	CALLAWAY, MARGARET	16	MLADY, PAT
11	CARY, LYNN	51	MOON, ELEANOR
1	CHAMBERS, VI	19	MOREY, CAROLINE
49	COLEMAN, BARBARA ANN	8	MOTOLA, MAUREEN
34	CRAWFORD, SHARON	23	MURASKI, CHARLENE
33	CULL, THELMA	43	NEW, JANICE
19	CUNNINGHAM, TANYA	43	NORRELL, JANA
25	DAVISON, HELEN	30	O'KELLEY, GENIE RAE
36	DE PUE, CAROLE	42	PAYNTER, JOAN
31	DILG, RUTH	25	PAYTON, SOPHIA
41	DINAN, ELIZABETH	49	PEARCE, MARTHA
56	DONNER, JOYCE	3	PEARSON, MARY
17	DRAPER, NORMA	45	PEEPLER, JUARITA
48	DUNNE, MARGUERITE	39	PICKERING, AILEEN
5	ETHERIDGE, DOT	59	PILAR, CAROLYN
4	FALKENBERG, CHARLENE	32	POTTER, ILOVENE
15	FLOURNOY, LATIMER	26	RAMU, BEA
46	FOWLER, JEANETTE	58	RICHARDSON, GINI
50	FREE, JANICE	58	RICHARDSON, JILL
39	FUTTERMAN, NORMA	45	RICKABAUGH, ELYNORE
32	GAMMELL, JAN	22	RINGENBERG, MARGARET
47	GANN, DORIS	26	ROBBINS, JOAN
60	GLADNEY, PATRICIA	18	ROBERTSON, MERRY
15	GLASSON, PAULINE	50	ROSE, JEAN PARKER
33	GOETZ, BARBARA	38	RUBERG, ELVA
53	HAMILTON, MARY ANN	44	RUTZ, JEAN
2	HENSLEY, TOOKIE	60	RUWELER, PAT
10	HINDS, ALMA	54	RYAN, CHERYL ANN
18	HIPP, ANNA KATE	40	SANTOSUOSSO, MARY
2	HOFFMAN, JANICE	24	SHARP, ALI
27	JAYNE, MARION	30	SHAW, DIANE
27	JAYNE, NANCY	13	SHOWERS, VIRGINIA
4	JENNINGS, BARBARA	37	SLAVIN, SUSAN
35	JETTON, PAT	53	ST. JOHN, V. JEAN
35	JOHNSON, ELINOR	12	STAFFORD, DIANE
29	JOHNSON, VAL	42	TANNER, SHIRLEY
13	JUDGES, PAT	14	TRUCHINSKE, LOIS
55	KEOUGH, ELLEN	37	TUNNEY, ANN
20	KNOX, PAT	62	ULRICH, JOYCE
54	KNUDSON, VICKEY	31	VAN DER LINDEN, PAM
48	KRIHA, JANE	51	WALTERS, CLAIRE
29	LEE, NELDA	61	WARE, THERESA
52	LEER, SHIRLEY	11	WEGENER, GINNY
1	LITTLE, LAURA	14	WEIR, PAT
21	LONG, KATHY	10	WELLS, JOYCE
23	LOWRY, ESTHER WRIGHT	21	WILKE, HELEN
41	LYON, MELINDA	5	WILSON, DOT
8	MACDONALD, BARBARA	22	WILSON, PAT
12	McCOLLUM, ERDINE	46	WINN, SHIRLEY
17	McGEE, HELEN		



RUSSELL V. STEPHENSON is Hughes Airwest's first president and chief executive officer. He also is a member of the executive committee of the airline's board of directors.

"This year the Hughes Airwest Air Race Classic heralds a significant aviation milestone--the 50th anniversary of women in air racing.

Your heritage dates back to 1929 when the first air derby was flagged off in Santa Monica -- appropriately the starting point of the 1979 classic.

The race this year is tinged with nostalgia. It was in this Southern California coastal city a half century ago that famed aviatrix Amelia Earhart took to the air, finishing third in Cleveland, Ohio.

She and others like her opened the door for women everywhere in the years that followed. You are carrying on their legacy in this exciting and demanding professional exercise.

The racers flying this year's winding 2,600-mile course to Milwaukee, Wisc. come from varied backgrounds and occupations. However, one common bond -- aviation -- brings you together. Hughes Airwest shares that bond and is very proud to be associated with one of the most sophisticated tests for women pilots in the world today.

You are an inspiration to us all and we admire your courage and skill.

Our support of the Air Race Classic for the second consecutive year symbolizes the partnership that exists between commercial and general aviation.

Hughes Airwest -- our more than 5,000 employees in 12 states, Mexico and Canada -- wish each participant in this year's race Godspeed for a safe and happy flight to Milwaukee."

Russell V. Stephenson
President
HUGHES AIRWEST

Awards

FIRST PLACE

\$5,000 cash from Hughes Airwest. Perpetual Trophy donated by Toledo Area Chamber of Commerce. FLIGHT CASE donated by Jeppesen-Sanderson.

SECOND PLACE

\$4,000 cash from Hughes Airwest. Leather Binder donated by Jeppesen-Sanderson.

THIRD PLACE

\$3,000 cash from Hughes Airwest. CR-5 Computer donated by Jeppesen-Sanderson.

FOURTH PLACE

\$2,000 cash from Hughes Airwest. CR-5 Computer donated by Jeppesen-Sanderson.

FIFTH PLACE

\$1,500 cash from Hughes Airwest. CR-5 Computer donated by Jeppesen-Sanderson.

SIXTH PLACE

\$1,300 cash from Hughes Airwest

SEVENTH PLACE

\$1,100 cash from Hughes Airwest

EIGHTH PLACE

\$900 cash from Hughes Airwest

NINTH PLACE

\$700 cash from Hughes Airwest

TENTH PLACE

\$500 cash from Hughes Airwest

PILOT AND CO-PILOT OF THE FIRST 10 PLACES WILL EACH RECEIVE A LENS-ART AWARD FROM AIR RACE CLASSIC.

BEECH AIRCRAFT AWARDS

\$1,500.00 if Contestant wins first place in a Beechcraft.

\$ 500.00 to Contestant placing second highest in the race in a Beechcraft.

\$1,000.00 to Contestant in a Beechcraft placing highest in the race if a competitive airplane wins the race.

\$ 500.00 to Contestant in a Beechcraft placing second highest in the race if a competitive airplane wins the race.

CESSNA AIRCRAFT AWARDS

\$1,000.00 if Contestant wins first place in a Cessna

\$ 500.00 if Contestant wins second place in a Cessna.

\$ 350.00 if Contestant wins third place in a Cessna

Contestants flying Cessnas not placing in the top three positions:

\$250.00 to Contestant placing highest in the race

\$100.00 to next nine Contestants placing next nine highest.

HIGHEST SCORE BY A CREW WHOSE COMBINED TIME IS 1,000 HOURS OR LESS:

\$100.00 donated by Air Race Classic

HIGHEST SCORE BY FIRST TIME RACERS:

\$100.00 donated by Air Race Classic

TO THE TEAM SCORING HIGHEST, NOT IN THE TOP TEN, AT LEAST ONE MEMBER WHICH IS A 99:

\$99.00 courtesy Santa Rosa Chapter 99s.

HIGHEST SCORE IN EACH CLASS OF AIRCRAFT OF WHICH THERE ARE AT LEAST THREE IN COMPETITION:

\$100.00 donated by Air Race Classic;

Silver Bowl to pilot and co-pilot, also from ARC.

145 — 199 hp 240 — 299 hp

200 — 239 hp 300 — 570 hp

TO THE TEAM SCORING HIGHEST, NEITHER MEMBER OF WHICH HAS PLACED IN THE TOP FIVE OF A MAJOR AIR RACE (CLASSIC, ANGEL DERBY OR POWDER PUFF):

\$100.00 donated by Air Race Classic

*Leg Prizes

Leg No.	From	To	Place	Award	Thanks to:
1.	Santa Monica	Stockton	1	\$150.00	Sacramento Valley Chapter 99s
			2	100.00	Air Race Classic
2.	Stockton	Klamath Falls	1	100.00	Air Race Classic
3.	Klamath Falls	Walla Walla	1	100.00	Air Race Classic
4.	Walla Walla	Great Falls	1	100.00	Air Race Classic
5.	Great Falls	Sheridan	1	100.00	Air Race Classic
6.	Sheridan	Bismarck	1	100.00	Air Race Classic
7.	Bismarck	Minneapolis	1	100.00	Air Race Classic
8.	Minneapolis	Milwaukee	1	100.00	Air Race Classic

*Crews placing in top ten not eligible for leg prizes.



Air Race Classic Ltd.



VELDA MAPELLI, President, 1979 Hughes Airwest Air Race Classic

In 1929 the first woman's cross country air race took off from Santa Monica. Fifty years later, the Hughes Airwest Air Race Classic returns to the same area; more entrants, more sophisticated airplanes, more advanced aeronautical skills, but with the same adventuresome desire to compete and share the common bond of flying.

The Classic has matured rapidly, as a result of Hughes Airwest, through their generous support and interest; the contestants who participate; the hundreds who co-ordinate facilities along the route. These combined efforts have helped the Air Race Classic organization to gain acceptance and prestige. We represent a composite of woman's advancement in aviation. I am proud to be a part of this.

Please accept my sincere appreciation.

Happy flying and God bless,

Velda King Mapelli

ARC

**B
O
A
R
D

of

D
I
R
E
C
T
O
R
S**



MARY PEARSON
Vice-President



HELEN MCGEE
Treasurer



HARRIETT BOOTH
Secretary



PAT JETTON
Director



ESTHER (WRIGHT) LOWRY
Director



PAULINE GLASSON
Director

Santa Monica, Fifty Years Ago



GLADYS O'DONNELL

When the flag dropped on August 18, 1929, the first of 19 marvelous flying machines roared into the sky to start the first Women's Air Derby. They were headed for San Bernardino, CA, and, when all had arrived, they could proceed on to the next Stop, Yuma...final destination the Cleveland Air Races.



[L to R] MARVEL CROSSEN, BOBBI TROUT,
AL WILSON, LOUISE THADEN



AMELIA WITH BLANCHE NOYES

It was a wide-open race, and anything to increase speed was allowed. Pilots had to have a current license and a minimum of 100 hours flying time. They had entered in two divisions: Engines from 275 to 510 cu. in., and 510 to 800 cu. in. displacement.

Take-Offs were planned at one minute intervals, but the span was lengthened "to allow the dust to settle". Each Stop had donated \$50.00 to the Race Fund, and there were 18 Stops. Will Rogers said "It's too bad Mexico City couldn't raise the \$50 or it, too, could have seen our women fliers".

The race took nine days, and there were mishaps along the way. Amelia Earhart nosed over in Yuma and everyone had to wait for her new prop. Blanche Noyes had a fire in the baggage compartment, landed on the desert to put it out, and took off again. Ruth Elder, in her bright red plane, landed in a pasture, hoping "all the cows be cows". One pilot landed South of the Border, but managed to escape the Mexican police.

The event was marred by the fatal accident of Marvel Crossen. The immediate cry was "Stop the Race!... Women can't fly..." At this point, race officials announced: "We wish to officially thumb our nose at the Press."

Regardless of the many mechanical problems, 11 of the original 19 finished the race. Louise Thaden was the winner, having flown her Beechcraft Travelair to Cleveland in 20:19:02 hours. Second was Gladys O'Donnell in a Waco with 21:21:41, followed by Amelia Earhart's Lockheed Vega in 22:12:42. In fourth position was Blanche Noyes, flying another Travelair, and Phoebe Omlie led the light plane division with flying time of 25:12:47 hours in a Monocoupe Warner.



PHOEBE OMLIE

To those Pioneer Aviators, gutsy gals whose determination made a place in a field which had been the sole possession of men, we are truly grateful.



RUTH ELDER



LOUISE THADEN

My compliments to Hughes Airwest for such a professional approach as well as for the sponsorship. I certainly wish you well and the enjoyment of total success. This wish is extended to the contestants as well.

Cordially,
Louise Thaden

LOUISE THADEN, winner of the first Women's Air Derby, was also the first woman to win the Bendix Race. She set numerous records in altitude, speed, and solo duration. Among her many awards is the coveted Harmon Trophy. A fascinating speaker and story-teller, Louise's "High Wide and Frightened" proves her also master of the written word.

GLOSSARY

AIGI—All Ground Instructor Ratings
 BGI—Basic Ground Instructor Rating
 IGI—Instrument Ground Instructor Rating
 ARC—Air Race Classic
 ATP—Airline Transport Pilot
 AWTAR—All-Woman Transcontinental Air Race
 (Powder Puff Derby)
 BP—Balloon Pilot
 CA—Commercial Pilot, Airplane
 CAP—Civil Air Patrol
 CG—Commercial Pilot, Glider
 C/RG—Commercial Pilot - Rotorcraft - Gyroplane
 C/RH—Commercial Pilot - Rotorcraft - Helicopter
 FBO—Flight Base Operator
 FIA—Flight Instructor, Airplane
 FIG—Flight Instructor, Glider
 FII—Flight Instructor, Instrument

F/RG—Flight Instructor - Rotorcraft - Gyroplane
 F/RH—Flight Instructor - Rotorcraft - Helicopter
 IRA—Instrument Rating
 99s—International Organization of Licensed Women Pilots
 PA—Private Pilot, Airplane
 PAR—Pacific Air Race
 PG—Private Pilot, Glider
 P/H RG—Private Pilot - Rotorcraft - Gyroplane
 P/H RH—Private Pilot - Rotorcraft - Helicopter
 SEL—Single Engine, Land
 SELS—Single Engine, Land and Sea
 SES—Single Engine, Sea
 SMEL—Single, Multi-engine Land
 SMELS—Single, Multi-engine Land and Sea
 VFR—Visual Flight Rules
 WACOA—Women's Advisory Committee on Aviation



KEN LARSON, Tower Chief, Walla Walla

Designated Airports

Designated Airports on the Route **Statute Miles**

1. Municipal Airport, Santa Monica, CA
2. Stockton Metro, Stockton, CA 310.43
3. Kingsley Field, Klamath Falls, OR 296.25
4. City-County Airport, Walla Walla, WA 321.54
5. International Airport, Great Falls, MT 341.24
6. County Airport, Sheridan, WY 281.79
7. Municipal Airport, Bismarck, ND 330.67
8. Flying Cloud Airport, Minneapolis, MN 376.63
9. General Mitchell Airport, Milwaukee, WI 306.07

TOTAL ROUTE MILEAGE 2564.62
[statute miles]

Harried Tower Controllers, busy Weather Men . . . There are many people who make our cross-country flights possible. The list below is incomplete, for these are only the names we KNOW. To all others, our SINCERE APPRECIATION for your interest and cooperation.

SANTA MONICA

TWR: FRANK SCHWARTZ
FSS: WILLIAM SCHOSSOW
WX: CHARLES CONWAY

STOCKTON

TWR: DERALD VANDERPOOL, Chief
FSS: ED HARRIS

KLAMATH FALLS

TWR: JOHN KELLER, Chief
wx: DAVE WILLIAMS

WALLA WALLA

TWR: KEN LARSON, Chief
FSS: LARRY HENRIQUES

GREAT FALLS

TWR: BONI FRANK, Chief
FSS: JOHN WILLIAMS
WX: WILLIAM RAMMER

SHERIDAN

FSS: LINDEN GILLIAM, Chief
WX: GEORGIA FIKE

BISMARCH

TWR: JOE HINK, Chief
WX: DONALD STOLTZ

MINNEAPOLIS

TWR: ROBERT PALMBY, Chief

MILWAUKEE

TWR: RAYMOND BARON, Chief
FSS: ROGER CALLAHAN

Honorary Starter



GLEN BUFFINGTON WITH BOBBY TROUT

"I feel very honored to be given the chance to wave the gals off at Santa Monica Airport this summer on the 50th Anniversary of the first Women's Air Derby as well as the 99's Golden Jubilee. I can think of nothing I would rather do except be a participant and win the race..."

Bobbi Trout

At 9:00 AM June 16, a tiny, vivacious woman will be on the ramp at Santa Monica Airport to drop the flag for Classic #1.

This is Bobbi Trout, charter member of the International Organization for Licensed Women Pilots (IOWP) who was here in her racing plane 50 years ago.

She learned to fly in 1929, and in her promotion of the Golden Eagle aircraft, became the country's first woman test pilot. She set some rather impressive records, and, while topping her own mark for non-refueling endurance, was the first woman to fly an all-night solo.

In her 90 h.p. Golden Eagle, she flew to 15,200 feet, setting a new women's altitude record for that category. A few days later, this plane was on the starting line at Santa Monica. A forced landing in Yuma slowed her time, but she was among those to finish at Cleveland.



BRAD PEARSON

Official Starter



It's not all fun and dropping flag... starting a race requires know-how and planning far ahead. Brad was back-up starter for several years during the Powder Puff Derby, and starts the Palomar Men's Race. It is a well-organized planner who can make a smooth and orderly take-off for a speed race. Brad knows the excitement of the green flag, and is ARC's Vice-President Mary Pearson's avid booster. We are fortunate to have him interested enough to spend the time and energy required.

HUGHES AIRWEST AIR RACE CLASSIC

1979 Handicaps

MAKE / MODEL	HP	MPH	MAKE / MODEL	HP	MPH
BEECHCRAFT			CESSNA (continued)		
Duchess 76	360	177	Skywagon 185 C-E	260	150
Baron	520	211	Skylane R-182 (78)	235	163
Baron	570	219	Skylane II 182 Q (77-)	230	149
Travel Air	360	185	Skylane II 182 P (75-76)	230	148
Bonanza P-35	260	181	Skylane 182 P (72-74)	230	145
Bonanza S	285	186	Skylane 182 F-N	230	145
Bonanza V-35 A & B	285	185	Cessna 180 K (77-)	230	149
Bonanza C-33A, E & F	285	183	Cessna 180 (75-76)	230	147
Bonanza E-33C	285	189	Cessna 180 (64-74)	230	146
Bonanza G-33	225	179	Cardinal RG 177 (77-)	200	158
Bonanza 36, A-36	285	183	Cardinal RG 177 (74-76)	200	156
Bonanza B-C 33	225	169	Cardinal RG 177 (72-73)	200	153
Bonanza F-E 33	225	169	Cardinal RG 177 (71-)	200	152
Sierra A, B-24-R	200	143	Cardinal 177 B (77-)	180	138
Super III Musketeer A-23-24	200	132	(Constant Speed Propeller)		
Sundowner C-23	180	125	Cardinal II 177B (75-76)	180	135
Musketeer A-23	165	122	(Constant Speed Propeller)		
Musketeer 23	160	118	Cardinal 177B (70-74)	180	131
Musketeer Sport A-23-19, B-19	150	115	(Constant Speed Propeller)		
BELLANCA			Cardinal 177A (Fixed Pitch)	180	130
Bellanca 14-19 A-C	260	169	Cardinal 177	150	121
(without nosewheel doors)			Skylark 175	175	126
Super-Viking 17-31 (Lycoming Only)	290	171	Skyhawk R 172 XP (77-)	190	133
Super-Viking 17-31 (Lycoming Only)	300	172	Skyhawk 172 N (77-)	160	124
Decathlon 8 KCAB	150	121	Skyhawk II (76)	150	121
Citabria 7 KCAB	150	121	Skyhawk II 172 (74-75)	150	119
Citabria 7 GCBC	150	120	Skyhawk 172 (68-73)*	150	116
Citabria 7 GCAA	150	120	Skyhawk 172	145	114
(Citabria's must be 40 gal.)			(*Eligible only with: Propeller Model # 1C		
(Bellanca Air Corp. only)			160 # CTM 7553 Part # C 161001-0305)		
CESSNA			GRUMMAN AMERICAN		
Cessna 310 R	570	218	Cougar	300	173
Cessna 310 F-L	520	210	Tiger AA5B	180	143
Skymaster 336	420	157	Cheetah AA5A (76-)	150	135
Skymaster 337 A-F	420	176	Traveler AA5A (75)	150	129
Skymaster 337 G	420	183	Traveler AAb (72-74)	150	121
Centurion 210 (69-)	285	182	MOONEY (also Aerostar)		
Centurion 210 (67-68) G-H	285	181	M 201J (77-)	200	179
Centurion 210 (66)	285	176	Ranger M20C	180	152
Centurion 210 (64-65)	285	177	Statesman M20G	180	150
Super Skylane P-206	285	153	Chapparral M20E	200	164
Super Skywagon U-206	285	153	Executive M20F	200	160
Cessna 205 (64)	260	147	Master M20D	180	126

HUGHES AIRWEST AIR RACE CLASSIC

1979 Handicaps (continued)

MAKE / MODEL	HP	MPH	MAKE / MODEL	HP	MPH
PIPER			ROCKWELL COMMANDER		
*Super Cub PA-18	150	109	Commander 114	260	171
Cherokee PA-28-140	150	121	Commander 112 (72-73)	200	146
Cherokee PA-28-150	150	121	Commander 112 A (74-76)	200	148
Cherokee PA-28-160	160	123	Commander 112B (77-)	200	150
Cherokee PA-28-180	180	131	Commander 200D	285	187
Cherokee PA-28-235 (thro. 77) (Fixed)	235	145			
Cherokee PA-28-235 (thro. 77) (constant speed)	235	146			
Cherokee PA-28-235 Dakota (78)	235	150			
Warrior PA-28-151	150	120			
Warrior PA-28-161	160	127			
Warrior II PA-28-161 (78-)	160	128			
Archer PA-28-181 (thro. 76)	180	131			
Archer PA-28-181 (77-)	180	137			
Arrow PA-28-180R	180	149			
Arrow PA-28-200R	200	152			
Arrow II PA-28-200R	200	153			
Arrow III PA-28-200R	200	155			
Comanche PA-24-180 (64)	180	147			
Comanche PA-24-250 (64)	250	172			
Comanche PA-24-260 & B	260	177			
Comanche PA-24-260C	260	178			
Comanche PA-24-400	400	199			
Cherokee '6' PA-32-260	260	146			
Cherokee '6' PA-32-260 (78-)	260	153			
Cherokee '6' PA-32-300	300	153			
Cherokee '6' PA-32-300 (78-)	300	160			
Lance PA-32-300R	300	174			
Lance II PA-32-300R (78)	300	178			
Aztec PA-23-250	500	195			
Aztec PA-23-250 (77-)	500	204			
Twin Comanche PA-30, B & CR	320	187			
Twin Comanche PA-30 C	320	184			
Twin Comanche PA-39	320	186			
Seneca PA-34	400	178			
Seminole PA-44-180 (1979)	360	173			

*(Fuel quantity may be doubtful
for this model)

FOOTNOTES:

1. Long range tanks do not raise handicaps.
2. Removal of wheel fairings does not lower handicaps.
3. New type Piper fairings - check with ARC headquarters for handicap if not listed above.

First Day Drawing

SANTA MONICA, CALIFORNIA

MARCH 10, 1979



BOBBI TROUT, 1929

Entries for this year's race opened February 23. All those postmarked opening day were pooled for a drawing to determine sequence of Take-Off.

Among the competitors 50 years ago, when the first women's transcontinental air race started from Santa Monica, was BOBBI TROUT of Carlsbad, California. She came back to Santa Monica to draw names for race numbers in the Golden Anniversary flight on June 16...the 1979 Hughes Airwest Air Race Classic. Other race contestants looked on as LAURA LITTLE, San Diego, CA, and co-pilot VI CHAMBERS, El Cajon, CA, drew number One for Take-Off.



Holding the bowl for Bobbi were (L) ARC President VELDA KING MAPELLI and (R) the Honorable DONNA SWINK, Mayor of Santa Monica.

THE SUSPENSE WAS TERRIBLE



Our Sincere Thanks To

MR. J. AUSTIN VINCENT is a retired Owens-Illinois Executive, with a second career in designing and engraving of glass. Some representative pieces include a presentation vase for Apollo 11; the International Olympic bowl, now in Olympia, Greece; the Centennial Memorial for the Illinois Glass Company, the World's largest piece of engraved glass.

For the ARC, Mr. Vincent has engraved a vase commemorating the 50th Anniversary, to be used as a perpetual trophy. This vase will be on display at the Race Start in Santa Monica.



HELEN AND AUSTIN VINCENT
Thomasville, GA



BETTY WHARTON
San Diego, CA

BETTY WHARTON, San Diego, CA, is one of our more knowledgeable under-the-cowling gals. She was Inspector for the AWTAR, and served on their Board for 7 years. Betty has devoted time and energy to inspection for many air races. We are fortunate to have her as our Chief Inspector.

JILL HOFFMAN, Public Relations Gal for HUGHES AIRWEST, has been coordinator between her company and THE ARC BOARD OF DIRECTORS. We are grateful for her know-how and cooperation... sides that, she's a cute lady...



JILL HOFFMAN
San Francisco, CA



PAM VANDER LINDEN

The tireless tennis-playing grandmother PAM VANDER LINDEN, who was Ways and Means Chairman for the Powder Puff Derby for many years, is lending her capability to the ARC. A busy Realtor, she finds time to race, and is #31 this year. The fact that daughter Jean is married to Charles Schulz has NOTHING to do with the catchy "Snoopy" items she sells...

ANN TUNNEY, racer #37, has gone over and above to help with ARC Publicity and Public Relations.



ANN TOONEY
Glen Ellen, CA

HUGHES AIRWEST
BEECH AIRCRAFT CORPORATION
CESSNA AIRCRAFT COMPANY
JEPPESON (for low altitude charts, approach plates of each airport, and additional gifts)
NATIONAL WEATHER SERVICE
FEDERAL AVIATION ADMINISTRATION

FEDERAL COMMUNICATIONS COMMISSION
FLIGHT SERVICE STATIONS
CHICAGO AREA 99s
FLORIDA SUNCOAST CHAPTER 99s
SANTA ROSA CHAPTER 99s
DOTTIE BIRDSONG
GLEN BUFFINGTON

CHAMPION SPARK PLUGS, especially Bill Paradise



1978 Terminus Destin, Florida

At the edge of the Florida Gulf's sugar-white beaches, last year's contestants found the Destin airstrip for their final Fly-By. The temporary tower handled traffic smoothly, and the tiny new Panhandle Chapter of 99s had arranged a festive terminus.

When the dust has settled, Florida Pilot Sophia Payton and co-pilot Helen Davison of Pennsylvania had the highest score... but EVERYONE had fun.



THE TOWER



TEAMS WERE GREETED WITH A SPOT OF BUBBLY



Sharing the fun at the finish (center) was NADINE HENLEY. She has recently retired as Senior Vice President of Summa Corporation, holding company for Howard Hughes' vast financial empire. Nadine was personal confidante to Mr. Hughes, and an absolute delight to the pilots at Destin—even taking a turn at parasailing.

Far right, front row, is hard-working Terminus Chairman BILLIE HILTON.



THE TOP TEN: Back Row, L to R: Pilots Sophia Payton, Dot Etheridge, Pat Jetton, Helen McGee, Sammy McKay, Marian Jayne, Helen Wilke, Barbara Goetz, Joyce Wells, Susan Adler. Front Row, L to R: Co-Pilots Helen Davison, Dot Wilson, Elinor Johnson, Norma Draper, Winnie DuPerow, Pat Keefer, Kathy Long, Thelma Cull, Alma Hinds, Mary Santosuosso.



ALICE E. HARPER [L] AND JUANITA HALSTEAD ALWAYS TAKE THE CAKE...



Edit the ARC Program? Well, O.K. . . .



Let's get at it



ANOTHER Biog?



Deadline

More Thanks

AS A FORMER AWTAR RACER AND BOARD MEMBER, I WELL KNOW THE EXCITEMENT OF THIS EVENT. LIKE A MOTHER HEN, WAITING FOR ALL THE "CHICKS" TO ARRIVE AT THE FINISH, I WISH YOU TAIL WINDS AND SAFE FLIGHT:

MY APPRECIATION TO **MARIAN BANKS**, WHO LOANED PICTURES FROM THE AWTAR FILES, AND TO **MINA JO POWELL**, WHO AFFORDED ME THE TIME TO BE YOUR EDITOR.

WANDA CUMMINGS

MORE GENEROUS FRIENDS:

AERO PUBLISHERS, EARNEST GENTLE (for our post cards); LEO T. ZUCKERMAN, ARC Attorney; "UNCLE CHESTER" BORELLI, ARC Accountant; LEE MUSSER, KEARNEY & TRECKER CORP.

ARC CONTESTANTS EXPRESS AN OVERWHELMING VOTE OF THANKS TO THE GROUND CREWS AT THE START, ENROUTE STOPS, AND TERMINUS. THEIR TIME AND COOPERATION MADE THE 1979 HUGHES AIRWEST AIR RACE CLASSIC POSSIBLE.





SANTA MONICA AIRPORT

ARC's Chief Inspector BETTY WHARTON, will have help from JEAN PYATT, Los Angeles Chapter 99s, and JOANNE NISSEN (who has helped with many races) from the Monterey Chapter 99s.

June 14, at the MIRAMAR SHERATON HOTEL, race teams will be introduced to the Press and Guests at a Take-Off Banquet. The following night, however, will be last minute charting and early to bed, for final briefing and Take-Off Breakfast start at 7:00 AM.

By 9:00 AM June 16, the sleek racing planes will be lined up in sequence of race numbers. When the flag drops, Classic #1 will roar into the sky, on course for Stockton, and in commemoration of 50 years of Women in Air Racing.



L to R: JERRY LINKIN, who is providing transportation through "AIR CAR"; **ELEANOR MOON**, Transportation Chairman; **CLAIRE WALTERS**, Start Chairman; **LILLIAN CAMDEN**, Palms Chapter 99s; **CARA LUND**, Social Chairman for ARC

The Start: Santa Monica, CA

Santa Monica, nestled against the Pacific Ocean at the foot of Wilshire Boulevard, is where pilots and officials of the race will gather with friends and relatives to begin the 1979 HUGHES AIRWEST AIR RACE CLASSIC.

All planes must be impounded for inspection by June 13, and the parties and pilot briefings begin.



HEADQUARTERS HOTEL, MIRAMAR SHERATON

Our gratitude to the SANTA MONICA PIER ASSOCIATION for the race charms which will be treasured by all the female flyers; to JOYCE FAILING, Chief Judge for the Start who doubles with capable cool as Chief Timer with JUDY BENJAMIN, and Airport Manager CLYDE FITZGERALD.

The Route



SAN JOAQUIN VALLEY CHAPTER 99s
 Who were given a Stop at a late date and came through for us with bright colors!
 Front Row, L to R: ROSE HIJOS, Timer, SALLY ELLISON, JEAN MURRAY (Stop Chairman), and SUSAN TARABETZ
 Back Row: ROBERTA FLANAGAN, SUSAN TOSCHI (Timer), MOLLY FLANAGAN, PAM MCKILLIP



SHIRLEY DARE, Chief Timer

The fertile farms of San Joaquin Valley were born during the Gold Rush of the 1850's, and became the fifth richest agricultural area in the nation. STOCKTON was chief point of departure for the area's gold-rush mines, since the San Joaquin River gave direct access to the San Francisco Bay.

Now a thriving metropolis, Stockton welcomes the ARC at METRO AIRPORT, where the manager is RALPH TONSETH.

From Stockton, racers will fly over vast open areas between the likes of Lassen and Crater Peaks to the 4,100 foot altitude of KLAMATH FALLS. There, Airport Manager PHIL RAND will be working with ANN ENMAN, who is not a 99 (where'd we go wrong?) but a capable Stop Chairman working with Willamette Valley Chapter members such as MARIAN CARTER (who was Stop Chairman at Medford in 1977) VERDA GUISTINA, ELLA MAE BOGEN, and DORIS ZUMWALT.



KINGSLEY FIELD, KLAMATH FALLS



LOUISE WICKS, Chief Timer



BONNIE BRADFORD, Timer



BRANDY HAMMER, Timer

GREETINGS FROM TOLEDO, OHIO
SPONSOR OF ARC PERPETUAL TROPHY
DALE CRAIG



JEAN DAVIS, Stop Chairman, in husband's 1908 Stevens-Duryea.

There's a dearth of airports across the Northern Plains...over the rolling hills and right of Pendleton (of the Plaids) to the CITY-COUNTY AIRPORT IN WALLA WALLA. Ramp space will be shared with the crop dusters, and, if you need transportation, it will be furnished by the WALLA WALLA HISTORICAL AUTO CLUB. Not ALL the fun is in the air...

Good guys like FSS man GIL GRAY and Tower Controller BILL O'LEARY will help MILLIE SHINN and DEE DOUGLAS with the timing.



DOUG WINN, Airport Manager



Bill Strunk [L] and Boni Frank, tower chief

In the heart of Big Sky Country, GREAT FALLS was named in the Journals of Lewis and Clark in 1805 for the series of spectacular drops near the source of the Missouri River. Amid the farms and ranches of today lies the new International Airport, terminal for airlines as well as the National Guard's F106 fighters, and managed by BILL UTTER.

Timers here will be BARRY POLLETTE and ANNE BARRETT. There's a chance VIVIAN SCHRANK will drop by...



MARJIE WOOD, Intermountain 99 who, with fellow members KAREN WOLFE, CHARLOTTE KIRKHAM, DEECOLLINS, DONNA LASATER, and LYDIE HAGAN will form the ground crew.



RALPH KATH

Since there are no local women pilots in the SHERIDAN area, COL. JOHN FRADET is acting as chairman of this Stop. USAF retired, Col. Fradet taught primary flying to British and American cadets. He will be working with COUNTY AIRPORT's manager RALPH KATH and a marvelous group called the "COWBELLES". These nice ladies, Auxillary to the Wyoming Stockgrowers, will be welcoming the racers and furnishing transportation.



RAYMOND HEINEMEYER, Airport Manager.



SHERIDAN COUNTY COWBELLE OFFICERS [L to R] ENID KREZELOK, BARBARA NINER, President PEGGY TERRY, and FERNE GORMAN.



COL. JOHN D. FRADET

Meeting friends like this is what makes cross-country racing worth while.

JUDY LOGUE, Chairman of the Wyoming 99s, will come from Casper to do the timing.



ONE IMPORTANT GROUND CREW: North Dakota 99s

BISMARCK prides itself as being a family town, medium-sized and modern, where cowboy suits and Brooks Brothers suits go together naturally. Schools, shopping and medical facilities are here for all of North Dakota.

North Dakota 99s will form this Stop Committee. Chairman KAY VOGEL, LORRAINE BOEHLER, KAREN WERNER, and AUDREY BAIRD, Chief Timer.

There's more to do in Bismarck and more time to do it", says the Chamber of Commerce...Well, don't linger NOW, gals, cause this race has a deadline!



L to R: SHARI MILLS, Timer; JOAN SOMMERFELD, Timer; CLARA JOHANSEN, Stop Chairman; MR. ROBERT PALMBY, Tower Chief; DOROTHY BOLANDER, Timer; ED McGAA, Airport Manager, and BARBARA LEITER, Timer.

“the terminus”

Deadline to MILWAUKEE is June 19, 6:00 PM. JOSEPH SENEK is the cooperative Director of GENERAL MITCHELL AIRPORT. Here you turn the planes over to BETTY WHARTON (didn't we see her in Santa Monica?) and GERTRUDE HEINTSKILL for inspection, head for the RED CARPET HOTEL...time to unbend. Visit a brewery or a botanical garden, OR just let the local 99s fit you into their entertainment plans.

June 19, all the scores will be in, and the AWARD DINNER is at 7:30 PM. Next morning everyone starts home, and starts planning how to WIN IT NEXT YEAR.



L to R, Front Row: JANE KRIHA, KAY TOTZKE, Entertainment; LINDA CARPENTER KONRUFF, P.R.; TERRI MARTIN, Program Sales
L to R, Back Row: HELEN KELLY, Chapter Chairman; DONNA BECHER, Co-Chairman; GERRY KUEHN, Entertainment; ELAINE STRICKLAND, and GERTRUDE HEINTSKILL, Co-Chairman.



CHIEF TIMER, MARY LOU WRIGHT



BERNICE NORTON TIMER
ANNETTA HAACK TIMER-not pictured.

Across the Missouri River and over the lush green flats of Minnesota to FLYING CLOUD AIRPORT, on the outskirts of MINNEAPOLIS. This is the last of the pit stops before the finish.

Pictured here are a few members of the large Minnesota Chapter of the 99s who will be working the Stop.



CHIEF JUDGE, HAZEL JONES

Note: All timers are welcome volunteers from the IOWA CHAPTER 99s.



LINDA HAEDGE a busy Blood Bank Flyer.



RITA ORR Chairman.



CONNIE SMITH, Tower Controller.



CHIEF SCORER, JUDY HALL



JEAN PATE, SCORER

Best Wishes To All The Competitors



Copyright © 1958 United Feature Syndicate, Inc.

from Snoopy & the Gang

at the

REDWOOD EMPIRE ICE ARENA



GOLDEN ANNIVERSARY RACERS

CLASSIC 1

PILOT (L): LAURA LITTLE, San Diego, CA
RATINGS: CA, SEL, 1150 hrs.
CO-PILOT (R): VI CHAMBERS, El Cajon, CA
RATINGS: CA, SMEL, IRA
AIRPLANT: Piper PA 28-140, 150 h.p.
SPONSOR: Cdr. A.R. Boileau, USN Ret.

LAURA, veteran of 12 Women's Air Races, is flying her first ARC. She is a Real Estate Salesperson with Century 21.

VI has flown 16 various Women's Races. She and pilot-husband Larry are grandparents of 10. . . also enjoy golf, fishing and water skiing.



CLASSIC 2

PILOT (L): **TOOKIE HENSLEY**, Riverside, CA
RATINGS: CA, SEL, IRA, 700 hrs.
CO-PILOT (R): **JANICE HOFFMAN**, Blue Jay, CA
RATINGS: PA, SEL, 137 hrs.
AIRPLANT: Cessna 172, 150 h.p.
SPONSORS: FIESTA KAMPERS & TRAILERS, San Bernadino, CA
PARFLITE, INC., Riverside, CA

"TOOKIE" and husband, Don, are both pilots, and own "Fiesta Kampers and Trailers". She has competed in several area races, placing first in the Riverside Air Race in 1976. She is co-chairman of the Inland California Chapter 99s.

JANICE was Tookie's co-pilot in last year's ARC. She likes the challenge of racing, but also enjoys snow skiing and oil painting. Optometrist husband, Ron, does not fly. . . but SOMEone has to babysit the two children, right?

CLASSIC 3

PILOT (L): **MARY PEARSON**, Carlsbad, CA
RATINGS: CA, SMEL, SES, FIA, FII, FAA Examiner, 12,000 hrs.
AIRPLANE: Piper PA28 180 h.p.

MARY has been racing since 1966, often placing in the top 10. Her husband, Brad, is also a Flight Instructor, and ARC's Official Starter. Together they own and operate a fixed base operation. Two of their four children are pilots, and they have 6 grandchildren.

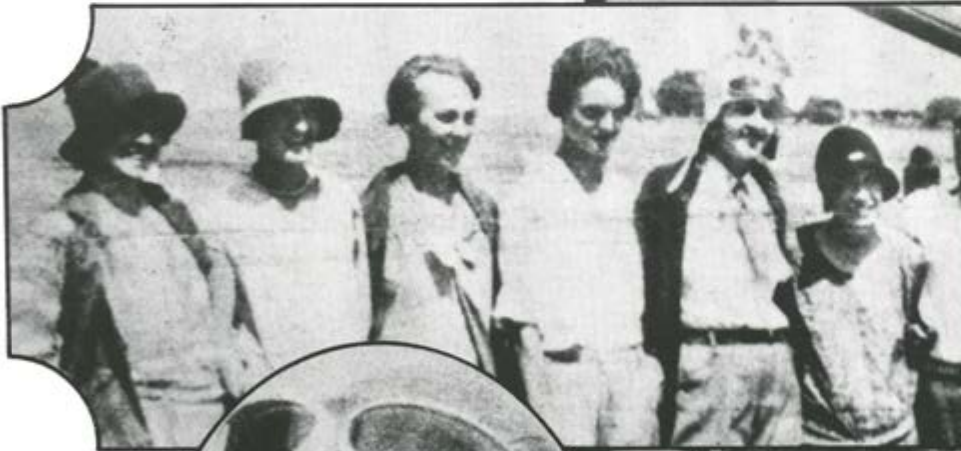


CLASSIC 4

PILOT (L): **BARBARA JENNINGS**, Valparaiso, IN
RATINGS: PA, SEL, IRA, 1800 hrs.
CO-PILOT (R): **CHARLENE FALKENBERG**, Hobart, IN
RATINGS: CA, SMEL, IRA, BGI, IGI, 1300 hrs.
AIRPLANE: Cessna 182P, 230 h.p.

BARBARA lists her occupation as "Home Engineer", but she is an active 99. She was instrumental in organizing the Indiana Dunes Chapter, and served as first Chairman. Barbara has 2 daughters, and a son who is a pilot. Husband Harry is a non-flying attorney.

CHARLENE, who started racing in 1969, instructs advanced and instrument Ground School at Purdue University, and is an Administrative Secretary for the Hobart City Schools. Her husband, Walter is an active pilot who encourages Charlene to race.





In commemoration of the 50th anniversary of women in air racing and in honor of the first women's air derby in 1929 ... Hughes Airwest wishes the racers in the second annual Hughes Airwest Air Race Classic a successful flight and happy landing.





CLASSIC 5

PILOT (L): **DOT ETHERIDGE**, Greenville, MS
 RATINGS: CA, SMEL, FIA, FII, BGI, 8200 hrs.
 CO-PILOT (R): **DOT WILSON**, Memphis, TN
 RATINGS: CA, SMEL, FIA, FII, BGI, 4000 hrs.
 AIRPLANT: Bonanza V-35, 285 h.p.
 SPONSORS: AIR COMMAND, Greenville, MS
 DOT'S AIRCRAFT SALES, Memphis, TN

These two DOTs placed second in last year's ARC. Pilot Etheridge is a member of the Acrobatic Club of America, and many of her hours were spent in her Pitts Special. She is owner-operator of a Flight Base Operation. Husband, Bob, and their son are both pilots.

DOT Wilson owns and operates "Dot's Aircraft Sales", but also finds time to play golf and fish...and race, "because I enjoy the fellowship of other racers".

CLASSIC 6

PILOT: **VELDA MAPELLI**, Las Vegas, NV
 RATINGS: CA, SEL, IRA, 2000+ hrs.
 AIRPLANE: Piper PA24-26OB, 260 h.p.
 SPONSORS: MAPELLI MEAT CO., Las Vegas, NV; HOSKINS
 SYMBOLIC DISPLAYS, INC., Irvine, CA

As President of ARC, this competent lady pulls it all together and makes the thing run, saying "Racing is the epitome of intellectual challenge." Velda is interested in all sports, but she and pilot-husband Eugene are especially flashy on the tennis court.



CLASSIC 7

PILOT (L): **EMMA McGUIRE**, Santa Monica, CA
 RATINGS: CA, SMEL, SES, FII, CG, 7000+ hrs.
 CO-PILOT (R): **DORIS MINTER**, Santa Monica, CA
 RATINGS: CA, SEL, IRA, 750 hrs.
 AIRPLANE: Cessna 182P, 230 h.p.
 SPONSOR: RALPH McGUIRE, FIRESIDE MARKET,
 Santa Monica, CA

EMMA says "I enjoy the excitement of racing and the fun of being with the other pilots. To me, happiness is Flying". She has taught one grandson (who is now working on Commercial and Instrument Ratings), soloed one granddaughter, and is now teaching her daughter. Emma has been racing since 1961.

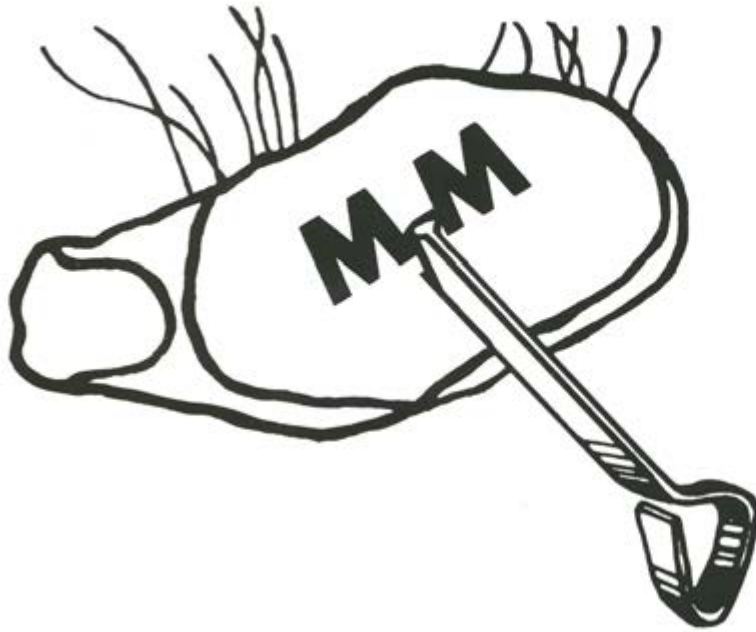
DORIS started racing in 1965 when she met Emma. With the many races they have flown together, this should be a team to watch. Doris is registrar and Secretary for a High School, and helps with children who have special problems. Her husband, Judge Rex Minter, and 21-year old son are also pilots.

HOSKINS SYMBOLIC DISPLAYS, INC.

1762 McGaw Ave., Irvine, CA 92714

COMPUTERIZED FUEL SYSTEMS

The ultimate in versatility and accuracy. Hoskins' sophisticated micro-processor design provides complete time and fuel system status at the touch of a button.



BRAND OF DISTINCTION

Good luck to all Hughes Airwest-Air Race Classic
contestants, especially our favorite racer
VELDA KING MAPELLI

MAPELLI MEAT COMPANY, INC.

3111 S. Valley View Blvd.
Las Vegas, Nevada 89102
(702) 876-9000

DISTRIBUTORS OF:
MONFORT OF COLORADO
BEEF AND LAMB
PRODUCTS

CLASSIC 8

PILOT (R): **BARBARA MACDONALD**, Las Vegas, NV
RATINGS: CA, SEL, IRA, 350 hrs.
CO-PILOT (L): **MAUREEN MOTOLA**, Sherman Oaks, CA
RATINGS: CA, SEL, IRA, AIGI, 430 hrs.
AIRPLANE: Cessna 182Q, 230 h.p.

BARBARA is Purchasing Agent for the Sands Hotel in Las Vegas. She and Maureen were #1 for take-off last year, and shortly after the Finish, decided to do it again in '79. Husband, Mike, is also a pilot. They enjoy "anything outdoors" and have recently taken up skiing.

MAUREEN, a statistician in Medical Research at the University of California, also sells Real Estate. She and husband Dan have raced together and she says racing is "A challenge and opportunity to improve skills. . ."



CLASSIC 9

PILOT (R): **LORRIE BLECH**, Los Angeles, CA
RATINGS: CA, SMEL, SES, FIA, IRA, 3300 hrs.
CO-PILOT (L): **SHIRLEY BERSON**, Beverly Hills, CA
RATINGS: PA, SEL, 275 hrs.
AIRPLANE: Beech Sundowner C-23, 180 h.p.
SPONSORS: SAWYER FLIGHT CENTER, Chino CA; AIRCRAFT METAL PRODUCTS CORP., Venice, CA; H.A. Henderson Co. Inc., Los Angeles, CA

LORRIE has been flying for 10 years and is employed as a flight instructor at Duke Aviation. She is experienced in racing, having flown AWTAR and Angel Derbies in addition to the ARC.

SHIRLEY has only been flying 2½ years, but has the racing bug. She has flown several races, including the ARC, Angel Derby, and Pacific Air Race. She and pilot-husband Marvin have just become FBO operators, and together operate Sawyer College at Pomona.

CLASSIC 10

PILOT (R): **JOYCE WELLS**, Larkspur, CA
RATINGS: CA, SEL, IRA, 1350 hrs.
CO-PILOT (L): **ALMA HINDS**, Redding, CA
RATINGS: CA, SMEL, IRA, 15,800 hrs.
AIRPLANE: Cessna R-182, 235 h.p.

JOYCE is a school nurse who takes to the air in her spare time. She has flown in 5 AWTARs, and, in the two ARC, placed 2nd and 9th. Husband, Harold, is also a pilot, and they have 4 children.

ALMA has been flying for 40 years, has raced in 3 AWTARs, and was co-pilot with Joyce for 9th place in last year's ARC. She has 3 children and 9 grandchildren, one of whom is taking flying lessons.



CLASSIC 11

PILOT (L): **VIRGINIA WEGENER**, Santa Rosa, CA
RATINGS: ATP, SMEL, FIA, FII, FAA Examiner, AIGI, 12,000 hrs.
CO-PILOT (R): **LYNN CARY**, Santa Rosa, CA
RATINGS: CA, SMEL, FIA, FII, AIGI, 3,000 hrs.
AIRPLANE: Cessna 310R, 570 h.p.
SPONSOR: NATION FLIGHT SERVICE, INC., Santa Rosa, CA

This is her first ARC, but "GINNY" is no stranger in racing circles. Always top competition, she has placed 3rd, 4th and 6th in the AWTAR. She is manager of Flight Operations for the sponsoring FBO.

LYNN and Virginia have been a team for a long time, in work and racing. Lynn says "Racing is the MOST!...challenging, exciting, demanding, and a truly contagious disease."

**CLASSIC 12**

PILOT (L): **ERDINE McCOLLUM**, Frankfort, KY
RATINGS: PA, SEL, 2240 hrs.
CO-PILOT (R): **DIANE STAFFORD**, Utica, KY
RATINGS: PA, SEL, IRA, 400 hrs.
AIRPLANE: COMMANDER 114, 260 h.p.
SPONSOR: HURST ROSCHE ENGINEERING, Frankfort, KY

ERDINE (Dee) likes racing because of the great people you meet. She works for Commonwealth of Kentucky Capitol City Airport in Frankfort, KY. She has been active in the CAP over the years, and now has Commission of Major.

DIANE has never raced, and is looking forward to the experience. Her husband, Ed, is a pilot AND an aircraft mechanic. . . How Handy!

CLASSIC 13

PILOT (L): **PAT JUDGES**, Agincourt, Ontario, Canada
RATINGS: CA, SMEL, IRA, 740 hrs.
CO-PILOT (R): **VIRGINIA SHOWERS**, Los Angeles, CA
RATINGS: CA, SMEL, SES, IRA, BGI, 1600 hrs.
AIRPLANE: Piper PA-44-180, 360 h.p.
SPONSOR: GLENAIR DISTRIBUTORS, LTD., Hamilton, Ontario
JACK JUDGES, Agincourt, Ontario

PAT and her pilot-husband, Jack, are co-owners of Best Film Industries, Ltd. She has flown 4 Angel Derbies, and placed in two. She flies for both business and pleasure, and treasures the friends she has made while racing.

VIRGINIA is a veteran racer and very often in the top ten. She has flown extensively in the U.S., Canada, Mexico, Bahamas, Central and South America. Why does she race? "Because I'm addicted to it!"

**CLASSIC 14**

PILOT (R): **LOIS TRUCHINSKI**, Wisconsin Rapids, WI
RATINGS: CA, SMEL, IRA, 100 hrs.
CO-PILOT (L): **PATRICIA WEIR**, Marshfield, WI
RATINGS: PA, SEL, SES, 460 hrs.
AIRPLANE: Piper PA-181, 180 h.p.
SPONSORS: VIKING AVIATION, La Crosse, WI; PITTSVILLE HOMES, Pittsville, WI; MIDSTATE AIRLINES, INC., Marshfield, WI

LOIS started flying with her husband in 1950, and began flying lessons when Larry lost his Medical. Larry and two friends rebuilt a 1959 Apache which he and Lois use for vacation flying. Lois has flown the Angel Derby, but this is her first ARC.

PAT learned to fly in a Navy Base Flying Club. . . the first 19 hours in a J-3 Cub. She is an FBO Manager in Marshfield, and very active in the 99s. Husband, Dr. John, does not fly, but encouraged her participation in the WI-Sky Run and the Final Powder Puff Derby.

**CLASSIC 15**

PILOT (L): **PAULINE GLASSON**, Corpus Christi, TX
RATINGS: CA, SMEL, SES, FIA, FII, AIGI, PG, 30,000 hrs.
CO-PILOT (R): **LATIMER FLOURNOY**, Corpus Christi, TX
RATINGS: PA, SEL, 65 hrs.
AIRPLANE: Cessna 172N, 160 h.p.

Mrs. Aviation! PAULINE has raced 24 AWTARs, and a number of Angel Derbies, and this is her third ARC. She is a member of the Aviation Advisory Board, Aviation Planning and Zoning Board, and the Humane Society Board. Pauline is self-employed as flight instructor and in Aerial Photography. (Husband Claude takes the pix. . .)

Pauline, usually races with one of her former students, and LATIMER is the latest "lucky". A Commerical Interior Designer, she is also a Sky Diver, having made 18 jumps with 1 15-second freefall. A runner, she is working on distance for marathon competition.



CLASSIC 16

PILOT (L): **PAT MLADY**, Wichita, KS
RATINGS: CA, SEL, IRA, 700 hrs.
CO-PILOT (R): **MERIEM ANDERSON**, Eureka, KS
RATINGS: CA, SEL, 716 hrs.
AIRPLANE: Cessna R182, 235 h.p.
SPONSORS: **FRANK MLADY, JR., HARRY ANDERSON**, Dead End Ranch

PAT is busy with the 99s, and has worked in the General Aviation field for over 25 years. She is executive secretary to two senior vice-presidents of Cessna Aircraft Company. This is her third cross-country Womens Air Race and she says "Racing is a way to really get away... it's a totally absorbing activity."

"ROBY" has never raced before, but has a background of flying as a test pilot in the WASPS during WWII. She also rides motorcycles, horses in rodeos, and 4-wheel pickups. Husband Harry is an enthusiastic supporter, but prefers to fly by Airline.

**CLASSIC 17**

PILOT (R): **HELEN McGEE**, Sonora, CA
RATINGS: PA, SEL, IRA, 2100 hrs.
CO-PILOT (L): **NORMA DRAPER**, San Rafael, CA
RATINGS: PA, SEL, 400 hrs.
AIRPLANE: Piper PA24-260B, 260 h.p.
SPONSORS: **UNION DEMOCRAT CORP.**, Sonora, CA; **AIRCRAFT TECHNICAL PUBLISHERS**, San Francisco, CA

This sister team is a real threat to the competition. An ARC Board member, HELEN and husband Harvey are both busy pilots. She has been in top of the top 10 many times and placed first in two Pacific Air Races. She regards air racing as the most unique competition in the world.

This is NORMA's 3rd race, all as co-pilot for her sister. She is an interior decorator, and husband Jerry is in Real Estate. Norma races for the fun and the challenge.

Drop in anytime on

**TUOLUMNE
 COUNTY**
 CALIFORNIA

... Vacationland in the
 heart of the Sierra

TWO AIRPORTS

Columbia . . . Elev. 2,112
 Pine Mountain . . . Elev. 2,900

Served by

The Daily Union Democrat
LEADING NEWSPAPER OF THE MOTHER LODGE

Since 1854





CLASSIC 18

PILOT (R): **MERRY ROBERTSON**, Greenville, SC
 RATINGS: PA, SEL, IRA, 480 hrs.
 CO-PILOT (L): **ANNE KATE HIPP**, Greenville, SC
 RATINGS: CA, SEL, IRA, 1050 hrs.
 AIRPLANE: Mooney M20-E, 200 h.p.
 SPONSORS: **BILL ROBERTSON, HAYNE HIPP**

MERRY is a full-time house wife, mother, and part-time court reporter. She is racing the ARC again this year, has raced in two Angel Derbies, and placed first in a Rose Rallye. She races for fun, travel, the people she meets, and to sharpen her skills. She states there's no better way to get all that in one package. "Once you've raced, you've got to go again!!!"

ANNA KATE is a full-time wife and mother of three who flies in her spare time. She has flown one Angel Derby, and was Pilot in last year's ARC.

CLASSIC 19

PILOT (L): **TANYA CUNNINGHAM**, Madison, WI
 RATINGS: CA, SEL, FIA, IRA, 300+ hrs.
 CO-PILOT (R): **CAROLINE ANN MOREY**, Middleton, WI
 RATINGS: PA, SEL, 266 hrs.
 AIRPLANE: Cessna R-182, 235 h.p.
 SPONSOR: **MOREY AIRPLANE CO.**, Middleton, WI

TANYA started flying at age 15 and soloed on her 16th birthday. A physics major at U. of WI, she is working toward a commercial aviation career. This will be her first air race.

CAROLINE, a Registered Nurse, will be racing for the 9th time. She is also a perspective Hang Glider. Her husband, Field, and son, Richard, are both pilots, Field being the Airport Manager in Middleton.



CLASSIC 20

PILOT (R): **PATSY DAWN KNOX**, Broomfield, CO
 RATINGS: CA, SMEL, FIA, IRA, 565 hrs.
 CO-PILOT (L): **JENNIFER CAINE**, Lyons, CO
 RATINGS: CA, SMEL, FIA, IRA, 1050 hrs.
 AIRPLANE: Piper PA 28-200R, 200 h.p.
 SPONSORS: **AIRCRAFT TRAINING CENTER & EMILY GRIFFITH OPPORTUNITY SCHOOL**, Denver, CO; **THE MARK RESORT**, Vail, CO

PAT combines flying and work as a Public Health Nutritionist to assist on the South Dakota Sioux Indian Reservation. She recently went around the world, living and learning among the natives, and visiting far-away 99s. This will be her second air race.

JENNIFER was co-pilot for Pat in their first air race during the Angel Derby last year. A native of Australia, she has an interesting part time job as Aerospace Technician. Husband Nelson is a professor at the University of Colorado.

CLASSIC 21

PILOT (R): **HELEN WILKE**, Dallas, TX
 RATINGS: CA, SEL, IRA, BP, 2150 hrs.
 CO-PILOT (L): **KATHY LONG**, Irving, TX
 RATINGS: CA, SEL, FIA, FII, BP, IGI, 1978 hrs.
 AIRPLANE: Bonanza V-35, 285 h.p.
 SPONSORS: **DR. JOSEPH E. WILKE, L.K. LONG**

This is a familiar cross-country racing team who seem to always take home a trophy. They are insatiable sight-seers, and living proof that racing can be fun, for, as Helen says, "The nicest people fly." Don't let their easy way and smiling faces fool you... they'll be tough to beat.



CLASSIC 22

PILOT (R): **MARGARET RINGENBERG**, Grabill, IN
RATINGS: CA, SMEL, FIA, FII, 20,000+ hrs.
CO-PILOT (L): **PRISCILLA WILSON**, Bedminster, NJ
RATINGS: CA, SEL, 565 hrs.
AIRPLANE: Piper PA32, 300 h.p.

MARGARET is truly a Pro. She is a former WASP, member of Silver Wings, has raced in numerous contests, including AWTAR, Angel Derby, and ARC. Husband Morris is a Realtor who does not fly.

PAT is back completing this team again this year. She has raced the ARC, 6 AWTARs and 2 Angel Derbies. Her "on the ground interest" is in Art Gallerys, and she is married to a Government Contractor.



CLASSIC 23

PILOT (R): **ESTHER P. LOWRY**, Thomasville, GA
RATINGS: CA, SEL, FIA, IRA, 4,000+ hrs.
CO-PILOT (L): **CHARLENE MURASKI**, Coral Gables, FL
RATINGS: PA, SEL, 422 hrs.
AIRPLANE: Piper PA 32, 300 h.p.

If there's a race, Esther is usually there flying it, and has been in the top ten several times, taking First Place in the 1975 Angel Derby. Husband Carl is a seeds specialist for Campbell Soup Co. He does not fly, but he thoroughly enjoys all the activity of a race, and is a willing member of the ground crew.

CHARLENE and spouse Richard have much the same circumstance... he is not a pilot, but encourages her to race. Charlene has flown the Pacific Air Race and the Angel Derby. Other interests are Breeding race horses, and antiques.

CLASSIC 24

PILOT: **ALI SHARP**, Grants Pass, OR
RATINGS: CA, SEL, IRA, 1550 hrs.
AIRPLANE: Cessna 177B, 180 h.p.
SPONSOR: SHARP LANTERN COMPANY, Grants Pass, OR

ALI is back! From start to finish, Ali had problems, and was unable to finish the 1978 ARC, but airlined to the Terminus to help the winners celebrate. She led a very ordinary life until her first flying lesson on her 55th birthday... then, as co-pilot in a 1969 race, she was hooked. This will be her 20th air race, almost always as a solo contestant.



CLASSIC 25

PILOT (R): **SOPHIA PAYTON**, Clearwater, FL
RATINGS: CA, SEL, IRA, 2700 hrs.
CO-PILOT (L): **HELEN DAVIDSON**, Gibsonia, PA
RATINGS: CA, SEL, IRA, AIGI, 750 hrs.
AIRPLANE: Cessna 172N, 160 h.p.

Last year's ARC winners are teamed again. SOPHIA has often taken first place, and, in the many races of her career, can be found in the top ten listing. She is an active 99, and has worked in various fields of aviation. Husband Neal is an airline pilot.

HELEN is a key member of the Greater Pillsburgh 99s, presently Middle East Air Marking Chairman. The winning co-pilot and husband Ellison have flown the 48 States, Alaska and the Bahamas.



CLASSIC 26

PILOT (R): **BEA RAMU**, Santa Rosa, CA
 RATINGS: CA, SEL, IRA, 310 hrs.
 CO-PILOT (L): **JOAN ROBBINS**, Geyserville, CA
 RATINGS: CA, SEL, 482 hrs.
 AIRPLANE: Cessna 172, 160 h.p.
 SPONSOR: **BELLANCA PILOT BERYL BARBER**, Santa Rosa, CA

BEA was born in Switzerland, then came to the U.S. in 1971 to learn to fly. She is NOT a slow learner, she just likes it here. Bea is a dispatcher with the Nation Flight Service in Santa Rosa. On the ground she likes skiing and Racquetball.

JOAN is a housewife and farmer. Weather has been her hobby since starting to fly, and she gives weather reports to local radio forecasters. Now THAT'S a valuable co-pilot!

CLASSIC 27

PILOT (R): **MARION JAYNE**, Palatine, IL
 RATINGS: ATP, SMEL, FIA, IRA, 2975 hrs.
 CO-PILOT (L): **NANCY LYNN JAYNE**, Mill Valey, CA
 RATINGS: PA, SEL, 93 hrs.
 AIRPLANE: Piper PA-39, 320 h.p.
 SPONSOR: **AIR AURORA, INC.**, Sugar Grove, IL

MARION is a professional pilot and racer, and likes the challenge of planning and flying cross-country races. She was winner of the first ARC, has won the Angel Derby 3 times, and can be expected to do well in any race she enters. She is a business consultant and a professional horsewoman, and recognized judge of the American Horse Shows Association.

Daughter NANCY is co-pilot again, as in the 1977 ARC. Her mother taught her to fly. You might find this girl playing bridge on the floor of a terminal building, or under the aircraft wing, waiting for the weather to improve. She is a senior account representative with Wang Laboratories.



AIR AURORA INC.
 AURORA MUNICIPAL AIRPORT
 Rt. 1 Box 233R Sugar Grove, IL 60554 312/466-4878

Winners fly winners!
 Good Luck Marion & Nancy!
 Warren Rogers

FLIGHT INSTRUCTION

MAINTENANCE

CHARTER

RENTAL



CLASSIC 28

PILOT: PAULINE MALLARY, College Park, GA
RATINGS: CA, SMEL, FIA, IRA, 3338 hrs.
AIRPLANE: Beechcraft C23, 180 h.p.

PAULINE states her occupation as "Liberated Housewife." We would also like to add she is a professional racer. She has flown 77 speed and proficiency races, and times in the top ten are too numerous to mention. This is her first ARC. Her husband, Peter, is a pilot with Eastern Air Lines.

**CLASSIC 29**

PILOT (R): VAL JOHNSON, St. Clair, MO
RATINGS: CA, SEL, IRA, FIA, C/RH, 5500 hrs.
CO-PILOT (L): NELDA LEE, St. Louis, MO
RATINGS: CA, SMEL, IRA, C/RH, 326 hrs.
AIRPLANE: Bonanza V35B, 285 h.p.
SPONSOR: BELMONT INDUSTRIES, St. Clair, MO

VAL is new to ARC, but not to racing. She has flown 9 AWTARs and 4 Angel Derbies. She is a corporation officer and company pilot for Belmont Industries. An active 99, she is Accident Prevention Councilor, Board Member of Missouri Airport Authority and Missouri Pilot Association.

NELDA is a flight test engineer with McDonnell Douglas Corporation. She has never raced, but is looking forward to "the flying experience, the opportunity to promote aviation, to meet other pilots across the country and the great fun!"

CLASSIC 30

PILOT (L): DIANE SHAW, Wildwood, NJ
RATINGS: CA, SMEL, IRA, 1000+ hrs.
CO-PILOT (R): GENIE RAE O'KELLEY, Knoxville, TN
RATINGS: CA, SMEL, FIA, FII, AGIG, 4500 hrs.
AIRPLANE: Piper PA32, 300 h.p.
SPONSOR: SHAWCREST MOBILE HOME PARK, Wildwood, NJ

DIANE is President of Sponsoring Mobile Home Park, but still finds time for tennis and flying. She has flown four AWTARs, and raced in the 1978 ARC.

GENIE RAE is Chief Flight Instructor and Vice President of Cherokee Flight Center in Knoxville. She has flown three AWTARs, and was Diane's ARC co-pilot last year. She enjoys telling her students about her racing experiences.

**CLASSIC 31**

PILOT (R): PAMELA VANDER LINDEN, Fallbrook, CA
RATINGS: CA, SEL, IRA, 2203 hrs.
CO-PILOT (L): RUTH DILG, Fallbrook, CA
RATINGS: PA, SEL, IRA, 334 hrs.
AIRPLANE: Bellanca Viking 17-31A, 300 h.p.
SPONSOR: FALLBROOK REAL ESTATE CO.

Racing planes, Snorkling, Tennis and Knitting... does that sound like a great grandmother? Neither does she act like one. She sharpens her wits and improves her skill by racing. PAM is self-employed as a Broker-Owner of a Real Estate Company, specializing in Avocado Groves and Ranches.

RUTH completes this team. She enjoys knitting and sewing, but feels racing is an irresistible challenge. No time to knit on this trip, gals...



CLASSIC 32

PILOT (L): JAN GAMMELL, El Cajon, CA
RATINGS: CA, SMEL, IRA, 4400 hrs.
CO-PILOT: ILOVENE POTTER, Federal Way, WN
RATINGS: ATP, SMEL, SES, FIA, FII, AIGI, C/RH, F/RH, 5,000+ hrs.
AIRPLANE: Piper PA24-260 B, 260 h.p.
SPONSOR: AERO PAINT, GELLESPIE FIELD, El Cajon, CA

JAN learned to fly in 1956 at this year's Start airport with Start Chairman Claire Walters as her Instructor. She says she races for the companionship and competition with other pilots. . . AND to get out of the kitchen for a week or two.

ILOVENE is a retired FAA Examiner and Chief Pilot, now Owner-Manager of a Cab Company and a Convalescent Center. Far from retired in flying, she is very active with the International Helicopter Group called "Whirley Girls".

This team has flown cross-country races together for 12 years, often placing in the top ten.

CLASSIC 33

PILOT (L): BARBARA GOETZ, Fair Oaks, CA
RATINGS: CA, SEL, IRA, FIA, C/RH, Aircraft-Power Plant Mechanic, 1270 hrs.
CO-PILOT (R): THELMA CULL, Fair Oaks, CA
RATINGS: PA, SEL, 500 hrs.
AIRPLANE: Piper PA24-260, 260 h.p.
SPONSOR: A. GOETZ & SON, INC., Sacramento, CA

BARBARA is Owner-President of A. Goetz & Son, Inc., Heavy Construction and Equipment Sales-Rental Company, and flies as the corporate pilot. She is on the Board of Directors of the 99s, and not new to racing. She has flown 6 AWTARs, 8 Palms to Pines, 2 Angel Derbies, 5 PARs, and 2 ARCs. . . placing 8th in 1978.

THELMA is the co-pilot again this year, and the two will be out to better their performance in '78. She is an active 99, currently serving as Vice-Governor of the Southwest Section.



CLASSIC 34

PILOT (L): MARGARET CALLAWAY, San Pedro, CA
RATINGS: CA, SMEL, SMELS, IRA, FII, CG, 13,000 hrs.
CO-PILOT (R): SHARON CRAWFORD, Redondo Beach, CA
RATINGS: PA, SEL, 190 hrs.
AIRPLANE: Cessna Cardinal 177B, 180 h.p.
SPONSOR: LYNN'S AIRCRAFT ENGINEERING, Long Beach, CA

The ageless MARGARET is a Flight Instructor and has flown over 40 races, 29 in the top ten, and 5 First Places. What a record! Her husband, Lt. Col. Richard Callaway, is a retired Air Force pilot.

SHARON's husband wanted her to take flying lessons with him. Now he is left baby-sitting while she goes racing. She is a math teacher at Torrance City Schools, and turns student at the airport for Margaret's Instrument Instruction.

CLASSIC 35

PILOT (R): PAT JETTON, Carrollton, TX
RATINGS: CA, SMEL, IRA, FIA, 3500 hrs.
CO-PILOT (L): ELINOR JOHNSON, Dallas, TX
RATINGS: CA, SMEL, IRA, FIA, FII, AIGI, 1450 hrs.
AIRPLANE: Bonanza C33A, 285 h.p.
SPONSOR: AIRPORT FLYING SCHOOL, Addison, TX

PAT, a professional pilot and Flight School owner, is the newest ARC Board Member, and set up details at this year's Terminus. She likes to travel anywhere, anytime, and often does. She has served on WACOA and various local FAA Committees, and is an active 99, at the International level.

ELINOR and Pat have teamed in many races, and are trophy-takers. A draftsman for Texas Instruments, Elinor also enjoys travel with her pilot husband and fellow members of the Redbird Chapter.



CLASSIC 36

PILOT (R): **MARIE MCMILLAN**, Las Vegas, NV
 RATINGS: CA, SMEL, FIA, IRA, PG, 1810 hrs.
 CO-PILOT (L): **CAROLE DEPUE**, Henderson, NV
 RATINGS: CA, SMEL, FIA, IRA, CG, FIG, AIGI, 2735 hrs.
 AIRPLANE: Bonanza F33A 285 h.p.

MARIE started racing with 2 AWTARs, a Fresno 400, and 1 ARC...and she's on the starting line again. She is active in many aviation organizations, and a glider enthusiast. Marie holds both World and National records for speed runs between Fresno, CA and Las Vegas, NV.

Veteran race pilot CAROLE is a member of the Civil Air Patrol, active with the Flying Farmers Association, interested in Experimental Aircraft, and has competed in Citabria Aerobatic Contest for Novices, placing second.



CLASSIC 37

PILOT (L): **ANN TUNNEY**, Glen Ellen, CA
 RATINGS: CA, SEL, IRA, 1137 hrs.
 CO-PILOT (R): **SUSAN SLAVIN**, Carpinteria, CA
 RATINGS: PA, SEL, 68 hrs.
 AIRPLANE: Bonanza 36, 285 h.p.
 SPONSOR: FUELTRON, "Precision Fuel Computer", SILVER SILVER INSTRUMENTS, Concord, CA, NATION AIR, Santa Rosa, CA

ANN loves adventure AND aviation. She describes herself as mother, wife, cook, transportation authority, soiled clothing supervisor, and general group organizer. She is also a fine Public Relations gal for air racing, having done much of the press work on the ARC. Her pilot-husband Gene is District Attorney of Sonoma County.

Sister SUSAN became interested in flying last year when she came to the Start of the ARC in Las Vegas. She was swept up in the momentum and decided to become a pilot and participate in the 1979 race as co-pilot for Ann. Here she is.



Fueltron® shows your exact fuel status at any instant

You can see fuel remaining, time remaining at the fuel rates indicated, and fuel burned.

The FUELTRON® is a complete fuel management computer that adds a new dimension to your flying. By knowing accurately your available flying time and fuel status, you make the most efficient use of your aircraft.

The large digital displays enable rapid, precise setting of engine power for any flight condition, plus more accurate leaning than with an EGT. Your FUELTRON will pay for itself through saved fuel, time, and engine wear.

Trend information is apparent at a glance from the constantly updated presentation.

FUELTRON's exceptional reliability and extreme accuracy have been proven over the years by hundreds of units in many thousands of hours of service. Great dependability is ensured through

military-quality circuit boards, gold-plated connectors, and hand-selected components.

A transcontinental test flight showed an accuracy of 0.13% (only 1.6 gallons error out of 1196 used). In normal use, accuracy is better than one percent. Every FUELTRON is matched to its aircraft.

FUELTRON puts much more capability into the hands of the pilot. Fully TSO'd, FUELTRON III-G for twins, FUELTRON I-G for singles-piston or turbine-driven, fixed- or rotary-wing.

For full information, contact the factory, or any of more than 100 dealers worldwide.

**SILVER
INSTRUMENTS**

2346 Starwell Drive, Concord, CA 94520
(415) 676-5900

Fueltron®, the proven fuel computer



CLASSIC 38

PILOT: ELVA RUBERG, Greensboro, NC
RATINGS: CA, SEL, FIA, FII, IRA, 2500 hrs.
AIRPLANE: Cessna 182P, 230 h.p.

ELVA is flying solo. She is employed by Southeast Flying Service as Flight Instructor and charter pilot. She has flown 4 Angel Derbies and placed 9th in 78. Husband Hugo is a pilot and President of Western Electric International.

HARTZELL, McCAULEY, AND SENSENICH SPECIALISTS

Propeller Distributors for Hartzell & Sensenich

We Stock for All Popular Models

Extensive Exchange Program

We Export Worldwide

Facility at Jefferson County Airport for Prompt Removal, Installation

Open Saturday 10 a.m. — 4 p.m.; Daily Until 8 p.m.

Airport Delivery and Pickup

AERO PROPELLER

W. 120th Ave. & Kipling St. — Jefferson County Airport

Broomfield, Colorado 80020
Sue Houston, Owner/Manager

TELEX 454326 SAMARAS DVR

Phone (303)469-1749
Out-of-State (800)525-8756

**Full-Support
Aircraft
Service**

**With a
WINNER**

AERO ASSOCIATES
Hangar B4A
Jeffco Airport • Broomfield, Colo. 80020
303-466-1961



CLASSIC 39

PILOT (R): **NORMA FUTTERMAN**, Beverly Hills, CA
RATINGS: CA, SMEL, SES, IRA, BGI, CG, 2200 hrs.
CO-PILOT (L): **AILEEN PICKERING**, Sherman Oaks, CA
RATINGS: CA, SELS, 1500 hrs.
AIRPLANE: Bonanza A36, 285 h.p.

NORMA enjoys music and cooking for her husband, Charles. She has been in many races including the ARC in which she placed 4th in 1977. She took second in the 1976 Angel Derby. Norma still enjoys the challenge of racing, and still tries to win. Maybe this year . . .

AILEEN is self-employed with Pickering Realty. She has been a 99 since 1950 and obtained the charter for the Long Beach Chapter, serving as its first Chairman. She likes to race because she loves to fly!



CLASSIC 40

PILOT (R): **SUSAN ADLER**, Suisun, CA
RATINGS: CA, SEL, IRA, 1145 hrs.
CO-PILOT (L): **MARY SANTOSUOSSO**, Vista, CA
RATINGS: PA, SEL, 620 hrs.
AIRPLANE: Piper PA 24-400, 400 h.p.
SPONSOR: NEIL ADLER, RONALD SANTOSUOSSO

A Physical Therapist when employed, a jogger when energetic, SUSAN races because she loves to get up at 4:00 AM and sit at the airport waiting, waiting, waiting. . . She also says she learns from all the racers. Susan placed 10th in the 1978 ARC.

MARY is the hard-working reservation's manager at the famous La Costa Resort Hotel, and manages to keep both guest and management happy. Mary said "I race because Sue nags me, but I enjoy being with the other racers".

CLASSIC 41

PILOT (Sitting): **ELIZABETH DINAN**, Bel Air, CA
RATINGS: CA, SMEL, FIA, FII, IRA, 2300 hrs.
CO-PILOT (Standing): **MELINDA LYON**, Los Angeles, CA
RATINGS: CA, SEL, 182 hrs.
AIRPLANE: Piper PA28-140, 150 h.p.
SPONSOR: PEACEFUL SKIES, Los Angeles, CA

ELIZABETH earned her private license at age 17. She is a Flight Instructor with Claire Walters at the Start airport. Winning the Amelia Earhart Scholarship in 1977 enabled her to obtain her multi-engine rating. She has been in 12 cross country races because "I like to see new places, keep up proficiency and meet old and new friends".

MELINDA and husband John own a Meyers 200 and a Piper Cherokee 140, and make frequent cross-country vacation flights. Sponsor "Peaceful Skies" is her own business—a unique service for pet owners. She says racing affords the excitement of working with an exceptionally talented group of women. Who. Us?



CLASSIC 42

PILOT (R): **JOAN PAYNTER**, Bakersfield, CA
RATINGS: CA, SMEL, IRA, 2300 hrs.
CO-PILOT (L): **SHIRLEY TANNER**, Newport Beach, CA
RATINGS: CA, SMEL, FIA, IRA, 2,000 hrs.
AIRPLANE: Piper PA44-180, 360 h.p.
SPONSOR: SIERRA FLIGHT SERVICE, Bakersfield, CA

JOAN is an office-holding 99, currently flying Air Taxi. "Everything from U.S. Congressman to injured dog being rushed to emergency surgery. . . lots of waiting around, but never dull." Her Architect husband Bill is not a pilot, but a great passenger.

This Sister Team has placed in the top ten many times, alternating pilot and co-pilot duties. SHIRLEY sells newly-constructed homes to pay for flying. Aerobatics is her prime interest. A team to watch, and not just because they're good looking!



CLASSIC 44

PILOT (L): **ELLEN MAYO**, Kennewick, WA
 RATINGS: CA, SMEL, SES, FIA, FII, IRA, 1450 hrs.
 CO-PILOT (R): **JEAN RUTZ**, Sequim, WA
 RATINGS: PA, 550 hrs.
 AIRPLANE: Cessna 177RG, 200 h.p.
 SPONSOR: SUNSHINE ACRES, INC., Gardner, WA

ELLEN is a part-time flight instructor who has enjoyed meeting 99s all over the U.S., Europe and South Africa, and has held both Canadian and So. African licenses. She flew the last two Powder Puff Derbies, and feels they taught her a great deal about flying.

This is JEAN's first race... she's been busy helping husband, Wally, rebuild a couple of Ercoupes so they can have "his and hers". Aside from EAA get-togethers, she also enjoys oil painting.



CLASSIC 46

PILOT (R): **JEANETTE FOWLER**, Woodland, CA
 RATINGS: PA, SMEL, IRA, 425 hrs.
 CO-PILOT (L): **SHIRLEY WINN**, Woodland, CA
 RATINGS: CA, SMEL, IRA, 2400 hrs.
 AIRPLANE: Bonanza A-36, 285 h.p.
 SPONSOR: ROSE VALLEY PRODUCE CO., El Macero, CA

JEANETTE flies for business, buying honeydew melons for export out of desert areas to all over the world. Husband Tom appreciates her being able to fly him "neat places to play golf". Last year she flew the PAR, His & Hers Salinas, and won best score for a first time racer in the Fresno 400.

Since Shirley's husband is a cardiovascular surgeon, she is active in the California Medical Auxiliary, and currently 1st. Vice President. She was the Southwest Section Woman Pilot of the Year, and is a member of California Aeronautics Technical Advisory Committee.

Glad you're back, SHIRLEY... you're always a bright face among the racers.

CLASSIC 43

PILOT (R): **JANICE NEW**, Memphis, TN
 RATINGS: CA, SMEL, IRA, 290 hrs.
 CO-PILOT (L): **JANA NORRELL**, Memphis, TN
 RATINGS: CA, SEL, FIA, FII, IRA, 3500 hrs.
 AIRPLANE: Cessna 210L, 300 h.p.
 SPONSORS: JOSEPH NEW AIRCRAFT REBUILDING, Jackson, TN
 SOUTHLAND FLYERS, INC., Memphis, TN

A laboratory technician, JANICE works in diabetes research at the VA hospital in Memphis. She received her private license at age 18, and is active in the Memphis Chapter 99s. This is her first major race.

JANA has been a Flight Instructor for eight years and loves to race "because it is the greatest challenge to pilot and plane." Her talent as free lance writer could make good reading of an appendectomy while flying the Angel Derby in Mexico...



CLASSIC 45

PILOT (L): **JUARITA PEEPLES**, Northridge, CA
 RATINGS: CA, SMEL, IRA, 1027 hrs.
 CO-PILOT (R): **ELYNORE RICKABAUGH**, Tarzana, CA
 RATINGS: PA, 540 hrs.
 AIRPLANE: Beechcraft A24R, 200 h.p.
 SPONSORS: THE MELTING POT, Hollywood, CA, MACHO'S, Westwood, CA

Married to a writer producer, JUARITA is the only pilot in her family. She flew the Powder Puff Derby Commemorative Race, and things racing could be fun.

ELYNORE is also the lone pilot in the family, and has competed in 7 cross-country races, regarding them as "challenging and fun". She is a Photography model who also enjoys camping, fishing, and collecting cook books.



CLASSIC 47

PILOT (R): **PHYLLIS BAER**, Mercer Island, WA
RATINGS: PA, SEL, IRA, 500 hrs.
CO-PILOT (L): **DORIS GANN**, Firday Harbor, WA
RATINGS: CA, SEL, 400 hrs.
AIRPLANE: Beechcraft C23 Sundowner, 180 h.p.
SPONSOR: BEECH AERO CLUB OF SEATTLE WA

PHYLLIS was a Link Trainer Instructor for the WAF, then a stewardess with Pan American. She is President of Seattle's World Wings International, and married to 747 Captain, Charles. Phyl is hurrying to get her Commercial License by race time.

DORIS is a Greater Seattle 99, secretary/book keeper to rancher-husband Earnest. Could that be the great "Ernie" Gann?

**CLASSIC 48**

PILOT (R): **JANE KRIHA**, Oshkosh, WI
RATINGS: CA, SEL, IRA, 270 hrs.
CO-PILOT (L): **MARGUERITE DUNNE**, Hartland, WI
RATINGS: ATP, SMEL, SES, FIA, FII, IRA, AIGI, 7400+ hrs.
AIRPLANE: Beechcraft A-23, 165 h.p.
SPONSORS: BASLER FLIGHT SERVICE, Oshkosh, WI; RAY'S BEVERAGE, Oshkosh, WI; DUNNE REAL ESTATE, Hartland, WI

An X-Ray technician, JANE enjoys golf, bowling, and racketball. She has flown the Angel Derby, and took 3rd in speed on the 1978 Wis-Sky Run.

A Real Estate Broker and Flight Instructor, Marguerite says she is interested in everything and anything EXCEPT Parachuting. Never mind, she's done plenty of "jumping" to get all those ratings!

CLASSIC 49

PILOT (R): **MARTHA PEARCE**, Tempe, AZ
RATINGS: CA, SMEL, SES, FIA, FII, IRA, AIGI, CF, FIG, 3,000 hrs.
CO-PILOT (L): **BARBARA ANN COLEMAN**, Phoenix, AZ
RATINGS: PA, SEL, 137 hrs.
AIRPLANE: Cessna 172, 160 h.p.
SPONSORS: ARIZONA BANK, Phoenix, AZ; PHOENIX AVIATION, Phoenix, AZ

This former Navy Nurse retired as a Lt. Commander. She enjoys soaring, swimming, loafing...wants to try her hand at speed racing. No loafing there, Martie.

A bank manager, BARBARA ANN is Vice President of the American Institute of Banking, and teaches banking in college. She also plays golf and tennis, and is working toward an instrument rating.

**CLASSIC 50**

PILOT (L): **JEAN PARKER ROSE**, Palos Verdes Estates, CA
RATINGS: ATP, SMEL, FIA, FII, AIGI, 25,000 hrs.
CO-PILOT (R): **JANICE FREE**, Vista, CA
RATINGS: PA, 232 hrs.
AIRPLANE: Cessna 172, 150 h.p.
SPONSORS: DEVCO, INC., Oceanside, CA; FREE BUILDERS SUPPLY, San Marcos, CA; THIBODO CONSTRUCTION CO., Vista, CA

Well-known in aviation circles, JEAN is the kind of contestant who lends class to a race. She is a Flight Instructor and Examiner, and Ground Instructor for Rose Aviation. She won the 2nd Powder Puff Derby and has been racing to win ever since.

JAN was Jean's co-pilot to take 8th in the 1977 ARC. She has flown four AWTARs and placed 3rd in her first Palms to Pines. Jan is "into" hunting and bagged her first Elk last year.



CLASSIC 51

PILOT (L): **CLAIRE LEE WALTERS**, Los Angeles, CA
RATINGS: CA, SMEL, FIA, FII, IRA, BP, FAA Examiner, 32,000 hrs.

CO-PILOT: **ELEANOR RUBY MOON**, La Habra, CA
RATINGS: CA, SEL, IRA, 308 hrs.

AIRPLANE: Cessna 172M, 150 h.p.

SPONSORS: **CLAIRE WALTERS FLIGHT ACADEMY**, Santa Monica, CA; **ANSELL CORPORATION**, Wilmington, DE

CLAIRE is starting this race from her home airport. She won the Powder Puff Derby in 1951 and has placed many times in many races. Another top professional pilot to watch!

Although MOONIE is low in total time, she has already experienced winning... first in the Palms to Pines in 1978. She is a native of Australia, but loves the Los Angeles area (and it's theaters!) This team races for fun and the wealth of stories it produces.

CLASSIC 52

PILOT: **SHIRLEY LEER**, Sacramento, CA

RATINGS: CA, SMEL, IRA, 1255 hrs.

AIRPLANE: Mooney M20C, 180 h.p.

SHIRLEY is flying solo, off from her jobs as Sales Secretary to a Beechcraft Dealer, and Manager of the Beech Aero Club. She's not new to racing, and has chalked up 4 PPDs, 3 PARs, and 1 Palms to Pines.



CLASSIC 53

PILOT (L): **MARY ANN HAMILTON**, Shawnee Mission, KS
RATINGS: CA, SMEL, IRA, P/RH, BP, 4900 hrs.

CO-PILOT (R): **V. JEAN ST. JOHN**, Kansas City, MO

RATINGS: CA, SEL, IRA, 450 hrs.

AIRPLANE: Piper PA-24, 260 h.p.

MARY ANN won't forget the 1978 Classic... she waited to get out of Olathe, knowing the 50K winds would remain until the last day... (Of course, they didn't). She is no novice, however, and has won the Powder Puff twice.

VEE will be completing this team for the fun, fellowship, and competition... "There is no better way to see our beautiful country..." She is, besides ardent pilot, a Braille Transcriber.

LAKE LAWN LODGE WELCOMES

**NORTH CENTRAL SECTION NINETY-NINES
INTERNATIONAL ORGANIZATION OF WOMEN PILOTS
SPRING MEETING**

MAY 16, 17, 18, 1980
DELAVAN, WISCONSIN

OFFICIAL PIN

The distinctive Air Race Classic Pin was designed by ESTHER WRIGHT LOWRY, ARC Board Member and ardent racer. The rosette border was meant to hold a diamond for each year the wearer has raced.



CLASSIC 54

PILOT (L): CHERYL ANN RYAN, Wayzata, MN
RATINGS: CA, SMEL, FIA, IRA, 315 hrs.
CO-PILOT (R): VICKY JEAN KNUDSON, Shakopee, MN
RATINGS: PA, SEL, 101 hrs.
AIRPLANE: Beechcraft Sierra C-24-R, 200 h.p.
SPONSOR: BEECH AERO CENTER OF MINNEAPOLIS

When CHERYL ANN got her private license, she went to work for Beech Aero as a bookkeeper. Now she is a Flight Instructor with the same firm. Racing is new to her, and she's looking forward to "getting her feet wet".

VICKIE works at Beech Aero too...as a "Gofor"...doing a bit of everything around the office. In addition to flying, she is interested in cross-country skiing, bicycling, and jogging.



CLASSIC 55

PILOT: ELLEN KEOUGH, New Berlin, WI
RATINGS: CA, SMEL, FIA, IRA, 3200 hrs.
AIRPLANE: Beechcraft BE-76, 360 h.p.
SPONSOR: AERODYNE INC., Milwaukee, WI

ELLEN first taught Elementary Education, then went into the air. Now she's Chief Flight Instructor for Aerodyne Flight School. Her favorite pastime is aerobatics in her own Citabria, but she also plays piano, raquetball, and hits the slopes with her skis.

CLASSIC 56

PILOT (L): TERESA MARTIN, Madison, WI
RATINGS: PA, SMEL, IRA, 250 hrs.
CO-PILOT (R): JOYCE DONNER, Oshkosh, WI
RATINGS: PA, SEL, 155 hrs.
AIRPLANE: Cessna R172K, 195 h.p.
SPONSORS: RHINELANDER AVIATION, Rhineland, WI;
BUTCH'S ANCHOR INN, Oshkosh, WI

TERRI's goal is to fly the moon shuttle. In the meantime, she's a full-time student at University of WI, majoring in meteorology, entered this race to meet people and see things.

JOYCE's husband is a practical man. He bought her a plane for her birthday, but only until the sanding and painting were done did she get her flying lessons. Last year she placed first in the Wis-Sky Run.





CLASSIC 57

PILOT (L): SANDRA PLANTE, Winter Park, FL
RATINGS: CA, SMEL, SES, FIA, FII, IRA, BGI, 725 hrs.
CO-PILOT (R): JUANITA BLUMBERG, Maitland, FL
RATINGS: PA, SMEL, IRA, 1160 hrs.
AIRPLANE: Piper PA 28R-201, 200 h.p.
SPONSOR: KENNETH PLANTE, Winter Park, FL

SANDRA, who raced in the last two Angel Derbies, is "wife, mother, and part time flight instructor"... An all-round gal, interested in all outdoor sports, music, art and photography.

JUANITA was co-pilot on the above mentioned Angel Derbies. She is listed in Who's Who of American Women, and an Aviation News writer "vitaly interested in the continued growth and prosperity of general aviation".

CLASSIC 58

PILOT (L): GINI RICHARDSON, Yakima, WA
RATINGS: ATP, SMEL, SES, FIA, FII, AIGI, C/RH, CG, FIG, FAA Examiner, 24,000 hrs.
CO-PILOT (R): JILL RICHARDSON, Yakima, WA
RATINGS: CA, SMEL, SES, FIA, IRA, Turbojet, AGI, 500 hrs.
AIRPLANE: Cessna 182P, 230 h.p.

How do you write a short "thing" on GINI Richardson? Winner of the Powder Puff Derby in 1971, she has flown more than 100 races, and collected that many trophies. She has been Charter Pilot, Airline Pilot, Ferry Pilot... taught daughter Jill to fly, and lest you think she's ALWAYS in the air, Gini just graduated from LAW SCHOOL!

JILL soloed on her 16th birthday, and is nearly as much in the air as her mother. She has her Flight Engineer Rating, and plans a career as an Airline Pilot. A Washington State Jumper Champion, she raises, trains, and shows horses of the hunting and jumping kind.



WELCOME TO SHERIDAN, WYOMING

Big Horn Airways, Inc.

Bob Eisele, Manager

307-672-3421

Services Include:

Phillips 66 Aviation Products

100 LL

Jet Fuel

Hangar Space

Tie Downs

Oxygen



Falcon Flight, Inc.

Gurden Barnett, Owner

Fred Mooney, Owner

307-672-7428

Services Include:

Standard Amoco Aviation Products

80 Octane

100 Octane

Jet Fuel

Hangar Space

Tie Downs

Oxygen



**FALCON
FLIGHT**

CLASSIC 59

PILOT: CAROLYN PILAAR, Greenville, SC
RATINGS: ATP, SMELS, IRA, FIA, FII, AIGI, CG, C/RH, 8,000 hrs.
AIRPLANE: Piper PA-39, 320 h.p.

We remember CAROLYN racing in a Decathlon, and here she is in a Twin Comanche. She is known for her love of flying, and placed first in the U.S. Precision Flight Team at Terra Haute in November last year. After this race, Carolyn will be competing for the U.S. Worldwide team. Good Luck!!



CLASSIC 60

PILOT (R): PATRICIA GLADNEY, Los Altos, CA
RATINGS: CA, SMEL, SES, FIA, FII, 15,000+ HRS.
CO-PILOT (L): PAT RUWELER, Woodside, CA
RATINGS: PA, SEL, 340 hrs.
AIRPLANE: Cessna 182, 230 h.p.
SPONSOR: HOWARD RUWELER, Woodside, CA

Pilot PAT flew 25 of the 30 Powder Puff Derbies, the Angel Derby, PAR, and Palms to Pines. A former WASP, she has been an FAA Examiner, and was the first recipient of the Amelia Earhart Scholarship Award. Talk about a pilot...

Second PAT in this team has been flying for three years, but has not raced before. She enjoys Scuba Diving, Snorkling, and flying her husband to and from his Duck Club in Northern California. She's looking forward to every mile of the ARC.

CLASSIC 61

PILOT (R): ANGELA BOREN, Lubbock, TX
RATINGS: PA, SEL, IRA, 870 hrs.
CO-PILOT (L): THERESA ANN WARE, Lubbock, TX
RATINGS: PA, SEL, 127 hrs.
AIRPLANE: Piper PA 28, 235 h.p.

This very active and efficient 99 is a Professor of Food and Nutrition at Texas Tech University. She joined the 99s the day her license was valid and was a charter member and first Chairman of the Lubbock Chapter. She and banker-husband Doug fly for any excuse they can find.

THERESA has been flying just over a year, and finds flying in Mexico interesting. She is taking time from selling and installing computers to join Angela in the ARC. "to improve my flying skills and have fun".



CLASSIC 62

PILOT (L): SAMMY McKAY, Grand Blanc, MI
RATINGS: CA, SEL, IRA, 2600 hrs.
CO-PILOT (R): JOYCE ULBRICH, Detroit, MI
RATINGS: CA, SMEL, FIA, IRA, 475 hrs.
AIRPLANE: Cessna 210J, 285 h.p.
SPONSOR: "DEAR OLE DAD", SUPERIOR PONTIAC-CADILLAC, Flint MI

SAMMY has raced many times, including Powder Puff since 1958 and is frequently in the top ten, landing 5th in last year's ARC. "I always wonder, when I get to the Start and see the entries, why an ole dame like me tries to win... Sporty, I guess..." Whatever the reason, we'd miss Sammy around the Start Line if Ole Dad ever backed out...

JOYCE is a racing green horn, but flying with a pro like Sammy will break her in right. She is a physical education teacher, coaching and officiating for volleyball.

Diary

June 12

13

14

15

16

17

18

19

20

21

Top Scores

1. _____
2. _____
3. _____
4. _____
5. _____
6. _____
7. _____
8. _____
9. _____
10. _____
11. _____
12. _____
13. _____
14. _____
15. _____
16. _____
17. _____
18. _____
19. _____
20. _____

Race Expenses

Food _____

Lodging _____

Fuel _____

Oil _____

Repairs _____

Tranquilizers
(Beer and Booze) _____

Odds and Ends _____



How what do we do?



Klamath doesn't have a tower?



E. W. L.



I taught that tower chief to fly



W. L. C.



East is least...



But it's on the west!



“As an architect, I know a good design means more than good looks. While others may buy the Skylane for its great style, I bought it for its outstanding performance. That’s what beautiful means to me.”



SKYLANE For many businessmen, the Skylane could be the most airplane they’ll ever need. It’s fast, it’s dependable, it’s economical to operate and it

requires only a minimum amount of maintenance to keep it flying.

Yet, it offers a useful load of 1,260 pounds; it climbs at 1,010 feet per minute; it cruises at 144 knots (166 miles per hour); and with new larger capacity fuel tanks, it has a maximum range of 1,095 nautical (1,260 statute) miles.

The Skylane’s cabin is the largest of all Cessna 4-place single-engine airplanes and is quiet, comfortable and attractively styled to make the journey pleasant.

This is why Skylane is the best-selling, high performance single-engine airplane ever built.

CESSNA '79

WE MEAN BUSINESS

Ask the businessman who owns one. The Skylane isn’t just an airplane — it’s a high flying business machine.

For more information on the Skylane, or to arrange for a demonstration, contact your nearest Cessna Dealer or complete this coupon and send it to: Skylane, Cessna Aircraft Company, Dept. ARP, Wichita, Kansas 67201 U.S.A.

Cessna

NAME _____

ADDRESS _____

CITY _____

STATE _____ ZIP _____

PHONE _____

COMPANY _____

POSITION _____



1979 Race Route

June 16- June 19, 1979 2564.62 Statute Miles



1978 Race Route

